

 **HECKEL**
PERFORMANCE WITH STYLE





P 002 **BRAND STORY**

P 004 **TECHNOLOGIES**

P 010 **STANDARDS**

P 012 **MACSOLE® X**

P 024 **RUN-R**

P 040 **SUXXEED OFFROAD**

P 050 **MACSOLE® SPORT 2.0**

P 058 **MACSOLE® ADVENTURE 2.0**

P 066 **SUXXEED**

P 072 **FOCUS 2.0**

P 078 **XXL PRO**

P 084 **MACSOLE® 1.0**

P 094 **MACSOLE® PLUS 2.0**

P 102 **MACSOLE® EXTREM 2.0**

P 106 **ACCESSORIES**

P 108 **MERCHANDISING**

P 109 **OVERVIEW**



PERFORMANCE WITH STYLE

OUR SLOGAN REFLECTS OUR GOAL.

Heckel, based in La Walck, France, has been a world leader in the manufacture of safety footwear since 1970. Our expertise in this field has meant Heckel has become regarded as an industry expert. In 2011 Heckel became part of the uvex group, a pioneer in personal protection equipment (PPE).

The Heckel name is synonymous with high performance. When worn, users are reassured that they are fully protected by their safety footwear and equipped for even the most extreme conditions.

We never compromise on the quality and control of our products as it is the best way of guaranteeing the performance of our products.

We are convinced that a wearer's safety stems from a combination of the most innovative materials, technologies and good design. Looking good whilst providing total protection is Heckel's goal.

OUR TECHNOLOGIES

YOU ARE THE EXPERTS THAT WE LISTEN TO WHEN DESIGNING NEW SAFETY FOOTWEAR. YOUR REQUIREMENTS ARE WHAT DRIVES OUR INNOVATION PROCESSES TO DELIVER FOOTWEAR THAT WILL PROTECT YOU ON A DAILY BASIS.

HECKEL FOOTWEAR OFFERS A NUMBER OF SAFETY AND PROTECTION SPECIFICATIONS. IN ORDER TO FACILITATE UNDERSTANDING OF THESE SPECIFICATIONS, WE USE VARIOUS PICTOGRAMS. BELOW IS THE LIST OF THOSE PICTOGRAMS AND THEIR MEANING.

100% metal free

The entire shoe is free of any metal parts



Insole with thermal insulation
Insulation against heat and cold



Non-metallic protective toe cap

Provides protection against falling objects up to 200 J and compression of up to 15,000 Newton in accordance with the EN 20345 standard | 100% antimagnetic | comfortable due to its ergonomic shape | extra wide | 20 % lighter than a conventional steel toe cap | conducts less heat and cold than a metal toe cap



Resistance to contact heat (HRD)
Resistance to temperatures of up to 300°C in accordance with the EN 20345 standard



Protective steel toe cap

Provides protection against falling objects up to 200 J and compression of up to 15,000 Newton in accordance with the EN 20345 standard



Non-metallic penetration-resistant midsole

Resistance to penetration up to 1,100 Newton in accordance with the EN 20345 standard | 100% composite | flexible | antimagnetic | protects 100% of the surface of the foot (as opposed to 85% on average for steel soles) | lighter than steel soles | conducts less heat and cold than a metal sole



Resistance to water penetration

WRU (water-resistant upper) or WR (water-resistant) in accordance with the EN 20345 standard



Stainless steel penetration-resistant midsole

Resistance to penetration up to 1,100 Newton in accordance with the EN 20345 standard



Flame-resistant stitching

OUR TECHNOLOGIES

WITH THE HELP OF OUR SPECIALIST TECHNICIANS, WE CREATE PRODUCTS THAT ARE EVER MORE INNOVATIVE. SOPHISTICATED CONTROL PROCEDURES ARE APPLIED TO ALL OUR MODELS THROUGHOUT THE MANUFACTURING PROCESS IN ORDER TO GUARANTEE ABSOLUTE QUALITY.



The rubber technology
MACSOLE®

Rubber is prized in many fields for its exceptional properties: grip, durability, elasticity, resistance to abrasion and resistance to extreme temperatures and harsh substances. Building on its many years of experience, Heckel has developed revolutionary new types of

rubber under the MACSOLE® brand. MACSOLE® soles, made from an exclusive mixture of nitrile rubbers developed by our R&D department, offer unparalleled performances in terms of adherence, safety and longevity in the most extreme conditions.



Durability

MACSOLE® soles are made of unique, exclusive compounds offering exceptional abrasion resistance and prolong the service life of our products.

Resistance to contact heat

Only rubber resists to contact heat up to 300°C and allows footwear to meet the HR0 standard.



Grip

Our exclusive MACSOLE® rubber formula offers unrivalled grip, far exceeding the requirements of EN 13287.

Shock absorption

The unique and exclusive rubber material used to make each MACSOLE® model provides very high shock absorption properties. The natural elasticity of rubber ensures long-lasting shock absorption. MACSOLE® footwear helps to lower the risk of accidents by reducing fatigue caused by prolonged walking or standing.

BOA®

THE BOA® FIT SYSTEM

Delivering fit solutions purpose-built for performance, the Boa® Fit System has revolutionised traditional lacing. Initially developed for the world of sport, the Boa® technology delivers fast, ultra-efficient, precision fit for maximum comfort and security.



MICRO-ADJUSTABLE DIAL

Click by click, get a precise and durable closure for an ultra-efficient fit.

LIGHTWEIGHT, SUPER-STRONG LACE

Inspired by technologies used in aviation to withstand the highest pressure the Boa® Fit System combines stainless steel and grained nylon.

LOW-FRICTION GUIDES FOR LACE

To ensure a smooth-closure.

HOW IT WORKS



Push in to engage



Turn to tighten



Pull up for quick release

THE BOA® BENEFITS

FAST

The Boa® Fit System allows you to get your gear on and off fast and easily, no matter the conditions.

CUSTOMIZED

Make instant micro-adjustments for a precise and custom fit, the Boa® Fit System improves performance and comfort - anytime, anywhere.

CONNECTED

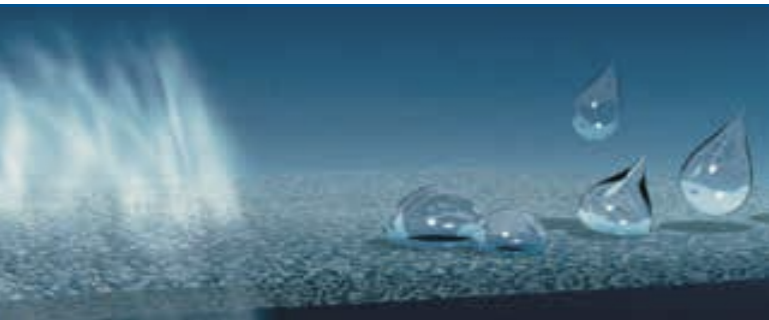
By offering you a micro-adjustable fit, Boa® allows you to be one with your equipment for an improved dexterity, responsiveness and control.

DURABLE

The Boa® Fit System dials and laces are guaranteed for the lifetime of the product on which they are integrated.



WATERPROOFNESS AND BREATHABILITY



THE GORE-TEX TECHNOLOGY

The GORE-TEX membrane has microscopic pores 20,000 times smaller than a drop of water but 700 times larger than one water vapour molecule. It thereby enables sweat to escape, while protecting you from rain and snow.

GORE-TEX Footwear keep your feet dry and comfortable.

PROVEN QUALITY UNDER UNCOMPROMISING TESTING CONDITIONS

GORE-TEX Footwear by far exceeds the requirements of the standard EN ISO 20345/347 with respect to waterproofness, breathability and durability.



Durable Waterproofness

GORE-TEX Footwear has to withstand up to 300,000 flex movements (80 hours) in ankle-high water - without allowing one single drop of water to penetrate inside the boot.

EN ISO standard 20344 requires only 4,800 flexes (80 minutes) and 3cm² water entry is allowed.



Breathability

The materials used in GORE-TEX Footwear achieve a breathability value up to six times higher than the values specified in EN ISO standard 20345/47.



Durability

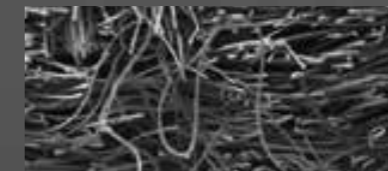
Inner lining and upper materials of GORE-TEX footwear have to withstand up to four times more abrasion movement than specified in by the EN ISO standard.

GORE-TEX INSULATED COMFORT FOOTWEAR

For outdoor working conditions, in great cold, works in mountains or cold-storage rooms, the new GORE-TEX footwear laminate development combines efficient thermal insulation with even 15% less weight with the same level of thermal protection.

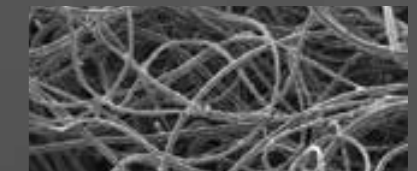
CONVENTIONAL INSULATION VERSUS NEW GORE-TEX INSULATION

Conventional insulation



more solid fibres **increase weight** | the flat 2D layered structure **prevents air from entering** | **loss of insulating capacity** when compressed | fibres bond together **limiting flexibility**

New GORE-TEX insulation



15% lighter | hollow and fewer fibres **reduce weight** | the 3D structure makes it possible to store more air for **increased insulation** | spiral effect ensures **flexibility and comfort**



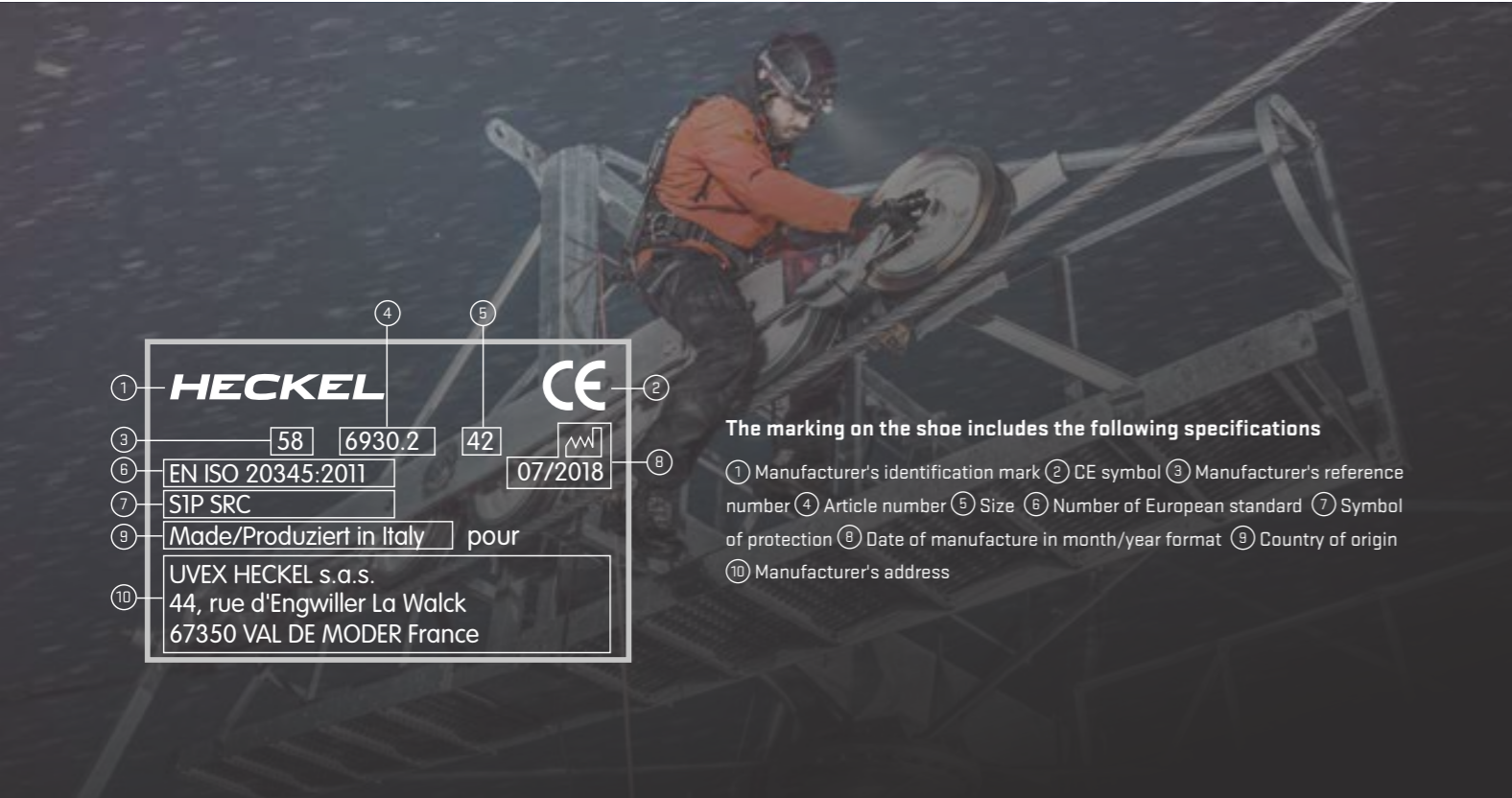
GORE-TEX MEMBRANE KEEPS THE INSULATION DRY

The durably waterproof and breathable GORE-TEX membrane ensures that the insulation is reliably protected against water penetration from the outside. At the same time, the sweat can easily escape to the outside in the form of water vapour.

The insulation stays dry and maintains its insulation efficiency. Your feet stay dry and comfortable.

Wet means cold, dry means warm !

STANDARDS



Any model certified after December 2007 must meet one of the three criteria below and be marked with the corresponding symbol

Label	Characteristics tested	Test conditions	Friction coefficient
SRA	slip resistance on ceramic tile floors with sodium lauryl sulfate solution (SLS)	forward slip of the heel forward slip on a flat surface	→ 0,28 → 0,32
SRB	slip resistance on steel floors with glycerol	forward slip of the heel forward slip on a flat surface	→ 0,13 → 0,18
SRC	slip resistance on ceramic tile floors with sodium lauryl sulfate solution and on steel floors with glycerol	SRA and SRB	

FOOTWEAR SYMBOLS FOR INDUSTRIAL USAGE

Basic requirements/additional requirements / categories e.g. for leather shoes	safety footwear EN ISO 20345	protective footwear EN ISO 20346	work footwear EN ISO 20347	The environments in which safety footwear are used will vary and are dependent on the types of hazard. Additional requirements may need to be considered, for example, insulation against heat or cold, or penetration-resistant midsole. This footwear will have to show the relevant identification. The inspection criteria for all basic and additional requirements are laid down in the EN ISO 20344 standard.
basic requirements for shoes and impact resistance of toe caps	SB 200 joules	PB 100 joules	OB No requirement	
additional requirements: closed heel antistatic energy absorption around heel fuel resistant	S1	P1	O1 (without fuel resistance)	
additional requirements: as above, plus water penetration water absorption	S2	P2	O2	
additional requirements: as above, plus penetration resistance* cleated outsole	S3	P3	O3	
Basic requirements/additional requirements/categories e.g. for shoes made from PVC or PU				
basic requirements for shoes and impact resistance of toe caps	SB 200 joules	PB 100 joules	OB No requirement	
additional requirements: antistatic energy absorption around heel fuel resistant	S4	P4	O4	
penetration resistance* cleated outsole	S5	P5	O5	

*Puncture-resistant (marked as P or S3) - Please note that the puncture resistance has been laboratory-tested in using a spike of 4.5 mm in diameter and a force of 1.100 Newton. A greater force or thinner spikes could increase the risk of penetration. When necessary, alternative preventive measures must be taken into consideration.

ADDITIONAL REQUIREMENTS FOR SPECIAL APPLICATIONS WITH CORRESPONDING SYMBOLS

May satisfy the standard though not required in this case
Meets the specified requirement

Symbol	Risks covered	EN ISO 20345 : 2011					EN ISO 20347			
		SB	S1	S2	S3	S5	OB	O1	O2	O3
-	basic									
P	penetration-resistant sole (stainless steel)									
A	antistatic footwear									
E	energy absorption around heel									
HI	heat insulation									
CI	cold insulation									
WRU	water resistance of upper									
HRO	heat resistance of outsole (+300°C/min)									
WR	whole shoe waterproof									
M	metatarsal protection									
CR	cut-resistant									
FO	sole resistant to hydrocarbons									



MACSOLE®

X

THE MACSOLE® X RANGE IS IDEAL FOR THOSE WORKING IN DEMANDING OR EVEN EXTREME CONDITIONS WITH EXPOSURE TO BAD WEATHER, RAIN, EXTREME COLD AND UNEVEN TERRAIN.

MACSOLE® products are designed to withstand the rigors of tough environments, offering several technical solutions: GORE-TEX membrane is waterproof and breathable keeping feet dry from external elements and a comfortable internal climate, GORE-TEX new generation thermal insulation technology gives maximum heat retention and MACOLE® X rubber sole delivers excellent levels of grip. The high quality raw materials and metal-free protection elements for lower weight greater flexibility.



01
PU comfort layer
excellent shock absorption | lightness

02
Injection moulded PU scuff cap
extends product life | suitable for those working in a crouching or kneeling position

03
Water-resistant full grain leather
specific for outdoor uses



PU/rubber sole

SRC | resistance to oils & hydrocarbons, chemicals | antistatic | optimal flexibility & shock absorption | resistance to contact heat up to 300°C (HRO standard)

French (EU) sizing system, width 11

- 01** rear grooves improve adhesion during first contact of heel to floor
- 02** PU comfort layer for excellent shock absorption
- 03** pronounced heel
- 04** GRIPSTEP profile for extra grip on ladders & stairs
- 05** self-cleaning profile increases slip resistance
- 06** all-terrain profile with deep cleats
- 07** excellent abrasion resistance
- 08** front grooves for better grip

Insole

anatomically shaped | antistatic



textile over layer: very good abrasion resistance | absorbant | fast drying

EVA perforated shock absorber and non-woven fibres: very high moisture absorption capacity | fast drying



Non-metallic penetration-resistant midsole

resistance to penetration up to 1,100 Newton in accordance with the EN 20345 standard | 100% composite | flexible | antimagnetic | protects 100% of the surface of the foot (as opposed to 85% on average for steel soles) | lighter than steel soles | conducts less heat and cold than a metal sole



Non-metallic protective toe cap

provides protection against falling objects up to 200 J and compression of up to 15,000 Newton in accordance with the EN 20345 standard | antimagnetic | comfortable due to its ergonomic shape | extra wide | 20% lighter than a conventional steel toe cap | conducts less heat and cold than a metal toe cap





-30°C



MX 100 GT S3 CI HI WR HRO SRC

PU/rubber **sole**, excellent levels of grip, oil, hydrocarbon and chemical-resistant, self-cleaning sole profile, excellent shock absorption, injection moulded PU scuff cap, resistant to contact heat up to 300°C | water-resistant full-grain leather and textile **upper**, padded tongue and collar, closure system with non-metallic hooks and zip, reflective piping and insert | GORE-TEX Insulated Comfort Membrane **lining** - new: 15% lighter and with the same level of insulation due to a new GORE-TEX insulation technology | metal-free **toe cap** | metal-free **penetration-resistant midsole** | anatomically shaped **hygienic insole** with level heel shock absorber | **weight 770 g** in size 42

outdoor work in extremely cold conditions, transportation networks, mountain work, cold stores, oil & gas, mining, 100% waterproof (WR)

SIZES **37 - 48** | EN ISO 20345: 2011
ART. NO. 63923





MX 200 GT LOW S3 CI HI WR HRO SRC

PU/rubber **sole**, excellent levels of grip, oil, hydrocarbon and chemical-resistant, self-cleaning sole profile, excellent shock absorption, injection moulded PU scuff cap, resistant to contact heat up to 300°C | water-resistant full-grain leather and textile **upper**, padded tongue and collar, closure system with non-metallic hooks and eyelets, reflective piping | membrane GORE-TEX Extended Comfort Footwear **lining** | metal-free **toe cap** | metal-free **penetration-resistant midsole** | anatomically shaped **hygienic insole** with heel shock absorber | **weight 680 g** in size 42

outdoor work in humid conditions, construction, transportation networks, energy, chemical, forestry. 100% waterproof (WR)

SIZES **37 - 48** | EN ISO 20345: 2011
ART. NO. 63963



100% metal free



MX 200 GT HIGH S3 CI HI WR HRO SRC

PU/rubber **sole**, excellent levels of grip, oil, hydrocarbon and chemical-resistant, self-cleaning sole profile, excellent shock absorption, injection moulded PU scuff cap, resistant to contact heat up to 300°C | water-resistant full-grain leather and textile **upper**, padded tongue and collar, closure system with non-metallic hooks and eyelets, reflective piping | membrane GORE-TEX Extended Comfort Footwear **lining** | metal-free **toe cap** | metal-free **penetration-resistant midsole** | anatomically shaped **hygienic insole** with heel shock absorber | **weight 690 g** in size 42

outdoor work in humid conditions, construction, transportation networks, energy, chemical, forestry. 100% waterproof (WR)

SIZES **37 - 48** | EN ISO 20345: 2011
ART. NO. 63943



100% metal free





CI



SRC



MX 400 GT S3 CI HI WR HRO SRC

PU/rubber **sole**, excellent levels of grip, oil, hydrocarbon and chemical-resistant, self-cleaning sole profile, excellent shock absorption, injection moulded PU scuff cap, resistant to contact heat up to 300°C | brown water-resistant full-grain leather **upper**, padded tongue and collar, closure system with metallic hooks and eyelets, reflective piping | GORE-TEX Extended Comfort Footwear membrane **lining** | metal-free **toe cap** | metal-free **penetration-resistant midsole** | anatomically shaped **hygienic insole** with heel shock absorber | **weight 715 g** in size 42



SIZES **37 - 48** | EN ISO 20345: 2011
ART. NO. 63953

MX 300 GT S3 CI HI WR HRO SRC

PU/rubber **sole**, excellent levels of grip, oil, hydrocarbon and chemical-resistant, self-cleaning sole profile, excellent shock absorption, injection moulded PU scuff cap, resistant to contact heat up to 300°C | water-resistant full-grain leather **upper**, padded tongue and collar, closure system with metallic hooks and eyelets, reflective piping | membrane GORE-TEX Extended Comfort Footwear **lining** | metal-free **toe cap** | metal-free **penetration-resistant midsole** | anatomically shaped **hygienic insole** with heel shock absorber | **weight 715 g** in size 42



SIZES **37 - 48** | EN ISO 20345: 2011
ART. NO. 63933



MX 500 S3 HI HRO SRC

PU/rubber **sole**, excellent levels of grip, oil, hydrocarbon and chemical-resistant, self-cleaning sole profile, excellent shock absorption. Injection moulded PU scuff cap, resistant to contact heat up to 300°C | water-resistant full-grain leather **upper**, padded tongue and collar, closure system with non-metallic eyelets and zip, reflective piping and insert | 3D mesh **lining** for excellent breathability, quick drying | metal-free **toe cap** | metal-free **penetration-resistant midsole** | anatomically shaped **hygienic insole** with heel shock absorber | **weight 760 g** in size 42

oil & gas, off-shore, construction, outdoor work in humid conditions, heavy industry, chemical

SIZES **37 - 48** | EN ISO 20345: 2011
ART. NO. 63973





RUN-R

THE RUN-R RANGE TAKES INSPIRATION FROM THE WORLD OF ROAD AND TRAIL RUNNING IN TERMS OF ITS DESIGN, TECHNOLOGIES AND THE PERFORMANCE IT OFFERS:

Low weight, ultra-flexible, excellent slip resistance (SRC).
microfibre uppers, 100% metal-free toe cap, premium hygienic insole, Boa® Fit System.

This range is designed for tradesmen; those working in warehousing and logistics and light industry.



01
TPU film
better abrasion resistance

02
Clima management / upper technologies
3D mesh lining: excellent breathability

03
The Boa® Fit System
effortless precision | ultra-efficient, customised and durable fit



Double density PU sole



SRC | resistance to oils & hydrocarbons, chemicals | antistatic | optimum flexibility & shock absorption

French (EU) sizing system, width 11

- 01** grooves at the back of the heel for a better grip when the heel first touches the ground
- 02** dual density PU for excellent shock absorption
- 03** GRIPSTEP profile for ladders and stairs
- 04** self-cleaning sole profile increases slip resistance
- 05** sharp-edged tread profile improves grip
- 06** large ground-bearing surface
- 07** deep grooves for better grip in the forefoot area

Insole

removable | anatomical | washable at 30°C



high quality microfibre top layer | excellent abrasion resistance | moisture absorption | quick drying | shock absorption in heel and forefoot areas | arch support



bottom layer of open cell foam: good moisture absorption and wicking properties | quick drying



Non-metallic penetration-resistant midsole

resistance to penetration up to **1,100 Newton** in accordance with the EN 20345 standard | **100% composite** | flexible | **antimagnetic** | **protects 100%** of the surface of the foot (as opposed to 85% on average for steel soles) | **lighter** than steel soles | conducts less heat and cold than a metal sole



Non-metallic protective toe cap

provides protection against falling objects up to **200 J** and compression of up to **15,000 Newton** in accordance with the EN 20345 standard | **antimagnetic** | **comfortable** due to its ergonomic shape | extra wide | **20% lighter** than a conventional steel toe cap | **conducts less** heat and cold than a metal toe cap



Boa® is a registered trademark of Boa Technology Inc.



RUN-R 500 S1P SRC

double density PU **sole**, grip, oil, hydrocarbon and chemical-resistant, self-cleaning sole profile, shock absorption | textile breathable **tongue** with stretch gusset for support, comfort and keeps dirt and debris out | lace **loop** to hold tongue in place | breathable **upper** mesh with TPU film in forefoot, heel and lacing areas for excellent abrasion resistance | 3D polyester mesh **lining** for excellent breathability, quick drying | metal-free **toe cap** | metal-free **penetration-resistant midsole** | anatomically shaped **hygienic insole** with front and heel shock absorption | **weight 520 g** in size 42

tradesmen, light industry, warehousing and logistics, manufacturing, dry environments

SIZES **35 - 48** | EN ISO 20345: 2011
ART. NO. 62673



100% metal free

RUN-R 510 S1P SRC

double density PU **sole**, grip, oil, hydrocarbon and chemical-resistant, self-cleaning sole profile, shock absorption | textile breathable **tongue** with stretch gusset for support, comfort and keeps dirt and debris out | lace **loop** to hold tongue in place | breathable **upper** mesh with TPU film in forefoot, heel and lacing areas for excellent abrasion resistance | 3D polyester mesh **lining** for excellent breathability, quick drying | metal-free **toe cap** | metal-free **penetration-resistant midsole** | anatomically shaped **hygienic insole** with front and heel shock absorption | **weight 520 g** in size 42

tradesmen, light industry, warehousing and logistics, manufacturing, dry environments

SIZES **35 - 48** | EN ISO 20345: 2011
ART. NO. 62683



100% metal free

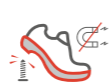


RUN-R 520 S1P SRC

double density PU **sole**, grip, oil, hydrocarbon and chemical-resistant, self-cleaning sole profile, shock absorption | textile **tongue** breathable with stretch gussets for support and comfort without any intrusion of materials | **loop** to adjust at best the position of the tongue | breathable **upper** mesh with TPU film in forefoot, heel and lacing areas for excellent abrasion resistance | 3D polyester mesh **lining** for excellent breathability, quick drying | metal-free **toe cap** | metal-free **penetration-resistant midsole** | anatomically shaped **hygienic insole** with front and heel shock absorption | **weight 520 g** in size 42

tradesmen, light industry, warehousing and logistics, manufacturing, dry environments

SIZES **35 - 48** | EN ISO 20345: 2011
ART. NO. 62693



100% metal free

RUN-R 530 S1P SRC

double density PU **sole**, grip, oil, hydrocarbon and chemical-resistant, self-cleaning sole profile, shock absorption | textile **tongue** breathable with stretch gussets for support and comfort without any intrusion of materials | **loop** to adjust at best the position of the tongue | breathable **upper** mesh with TPU film in forefoot, heel and lacing areas for excellent abrasion resistance | 3D polyester mesh **lining** for excellent breathability, quick drying | metal-free **toe cap** | metal-free **penetration-resistant midsole** | anatomically shaped **hygienic insole** with front and heel shock absorption | **weight 520 g** in size 42

tradesmen, light industry, warehousing and logistics, manufacturing, dry environments

SIZES **35 - 48** | EN ISO 20345: 2011
ART. NO. 62703



100% metal free



RUN-R 100 LOW + HIGH S1P SRC

double density PU **sole**, grip, oil, hydrocarbon and chemical-resistant, self-cleaning sole profile, shock absorption | mesh **upper** and TPU support structure for excellent abrasion resistance | 3D polyester mesh **lining** for excellent breathability, quick drying | metal-free **toe cap** | metal-free **penetration-resistant midsole** | anatomically shaped **hygienic insole** with front and heel shock absorption | **easy lock system: speed lace system** / standard laces are supplied in the box (LOW) | **weight 510 g (LOW) and 550 g (HIGH)** in size 42

tradesmen, light industry, warehousing and logistics, manufacturing, dry environments

SIZES **37 - 48** | EN ISO 20345: 2011
ART. NO. 62583 (LOW)
62573 (HIGH)



100% metal free

RUN-R 120 LOW BOA® S1P SRC

double density PU **sole**, grip, oil, hydrocarbon and chemical-resistant, self-cleaning sole profile, shock absorption | mesh **upper** and TPU support structure for excellent abrasion resistance | 3D polyester mesh **lining** for excellent breathability, quick drying | metal-free **toe cap** | metal-free **penetration-resistant midsole** | anatomically shaped **hygienic insole** with front and heel shock absorption | **Boa® Fit System** for quick, easy and customized fit | **weight 530 g** in size 42

tradesmen, light industry, warehousing and logistics, manufacturing, dry environments

SIZES **35 - 48** | EN ISO 20345: 2011
ART. NO. 62585



Boa® is a registered trademark of Boa Technology Inc.



RUN-R 110 LOW S1P SRC

double density PU sole, grip, oil, hydrocarbon and chemical-resistant, self-cleaning sole profile, shock absorption | mesh upper and TPU support structure for excellent abrasion resistance | 3D polyester mesh lining for excellent breathability, quick drying | metal-free toe cap | metal-free penetration-resistant midsole | anatomically shaped hygienic insole with front and heel shock absorption | easy lock system: speed lace system / standard laces are also supplied in the box | weight 510 g in size 42

tradesmen, light industry, warehousing and logistics, manufacturing, dry environments

SIZES 37 - 48 | EN ISO 20345: 2011
ART. NO. 62633



100% metal free

RUN-R 200 + 210 S1P SRC

double density PU sole, grip, oil, hydrocarbon and chemical-resistant, self-cleaning sole profile, shock absorption | mesh upper with TPU film for excellent abrasion resistance | 3D polyester mesh lining for excellent breathability, quick drying | metal-free toe cap | metal-free penetration-resistant midsole | anatomically shaped hygienic insole with front and heel shock absorption | weight 530 g in size 42

tradesmen, light industry, warehousing and logistics, manufacturing, dry environments

SIZES 37 - 48 | EN ISO 20345: 2011
ART. NO. 62593 (200)
62643 (210)



100% metal free

METAL
FREE

S3

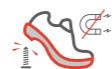


RUN-R 600 LOW S3 SRC

double density PU **sole**, grip, oil, hydrocarbon and chemical-resistant, self-cleaning sole profile, shock absorption | full-grain leather **tongue** with stretch gussets offering both support, comfort and keeps dirt and debris out | water-resistant brown and black full-grain leather **upper** | 3D polyester mesh **lining** | metal-free **toe cap** | metal-free **penetration-resistant midsole** | anatomically shaped **hygienic insole** with front and heel shock absorption | **weight 570 g** in size 42

tradesmen, light industry, warehousing and logistics, manufacturing, damp working conditions

SIZES **35 - 48** | EN ISO 20345: 2011
ART. NO. 67053



100%
metal
free



RUN-R 600 HIGH S3 SRC

double density PU **sole**, grip, oil, hydrocarbon and chemical-resistant, self-cleaning sole profile, shock absorption | full-grain leather **tongue** with gussets offering support and keeps dirt and debris out | water-resistant brown and black full-grain leather **upper** | 3D polyester mesh **lining** | metal-free **toe cap** | metal-free **penetration-resistant midsole** | anatomically shaped **hygienic insole** with front and heel shock absorption | **weight 620 g** in size 42

tradesmen, light industry, warehousing and logistics, manufacturing, damp working conditions

SIZES **35 - 48** | EN ISO 20345: 2011
ART. NO. 67043



100%
metal
free





RUN-R 300 LOW + HIGH S3 SRC

double density PU **sole**, grip, oil, hydrocarbon and chemical-resistant, self-cleaning sole profile, shock absorption | water-resistant embossed oiled nubuck **upper** | 3D polyester mesh **lining** for excellent breathability, quick drying | metal-free **toe cap** | metal-free **penetration-resistant midsole** | anatomically shaped **hygienic insole** with front and heel shock absorption | **weight 550 g (LOW) and 560 g (HIGH)** in size 42

tradesmen, industry, warehousing and logistics, manufacturing, local authorities, damp working conditions

SIZES **37 - 48** | EN ISO 20345: 2011
ART. NO. 62603 (LOW)
62663 (HIGH)



100%
metal
free



RUN-R 400 LOW + HIGH S3 SRC

double density PU **sole**, grip, oil, hydrocarbon and chemical-resistant, self-cleaning sole profile, shock absorption | water-resistant embossed full-grain leather **upper** | 3D polyester mesh **lining** for excellent breathability, quick drying | metal-free **toe cap** | metal-free **penetration-resistant midsole** | anatomically shaped **hygienic insole** with front and heel shock absorption | **weight 570 g (LOW) and 580 g (HIGH)** in size 42

tradesmen, industry, warehousing and logistics, manufacturing, local authorities, damp working conditions

SIZES **37 - 48** | EN ISO 20345: 2011
ART. NO. 62653 (LOW)
62613 (HIGH)



100%
metal
free





SUXXEED
OFFROAD

**THE SUXXEED OFFROAD RANGE
HAS BEEN DEVELOPED TO WITHSTAND
THE DEMANDS OF THOSE WORKING
IN RUGGED OUTDOOR ENVIRONMENTS
SUCH AS THE BUILDING TRADES.**

The outdoor design, all-terrain sole and injection moulded polyurethane scuff cap are designed specifically for the demands of those working in more challenging workplaces.



01
Closure system
non-metallic eyelets and hooks

02
Few lateral seams
limits pressure points when bending
for increased comfort | improves liquid
penetration resistance

03
Injected moulded PU scuff cap
extends product life | suitable for those working in
a crouching or kneeling position



PU20 sole

SRC | resistance to oils & hydrocarbons, chemicals |
antistatic | optimum flexibility & shock absorption

French (EU) sizing system, width 11

- 01** rear grooves improve adhesion during first contact of heel to floor
- 02** double density PU sole for excellent shock absorption and very low weight
- 03** pronounced heel
- 04** GRIPSTEP profile for extra grip on ladders & stairs
- 05** sharp tread profile improves grip
- 06** all-terrain profile with deep cleats
- 07** self-cleaning profile increases slip resistance
- 08** front grooves for better grip

Insole

anatomically shaped | antistatic



textile over layer: very good
abrasion resistance | absorbant |
fast drying

bottom layer of open cell foam:
very high moisture absorption
capacity | fast drying



Non-metallic penetration-resistant midsole

resistance to penetration up to **1,100 Newton** in accordance with the EN 20345 standard | **100% composite** | flexible | **antimagnetic** | **protects 100%** of the surface of the foot (as opposed to 85% on average for steel soles) | **lighter** than steel soles | conducts less heat and cold than a metal sole



Non-metallic protective toe cap

provides protection against falling objects up to **200 J** and compression of up to **15,000 Newton** in accordance with the EN 20345 standard | **antimagnetic** | **comfortable** due to its ergonomic shape | extra wide | **20% lighter** than a conventional steel toe cap | **conducts less** heat and cold than a metal toe cap





S3



METAL FREE



SUXXEED OFFROAD S3 HIGH + LOW S3 CI SRC

double density PU **sole**, excellent levels of grip, oil, hydrocarbon and chemical-resistant, self-cleaning sole profile, excellent shock absorption, injection moulded PU scuff cap | water-resistant brown oiled grain leather **upper**, microfibre insert, water-resistant tongue and collar, reflective elements, non-metallic eyelets and hooks | 3D mesh **lining** for excellent breathability, quick drying | metal-free **toe cap** | metal-free **penetration-resistant midsole** | anatomically shaped **hygienic insole** with bottom layer of open cell foam, very high moisture absorption capacity, fast drying | **weight 610 g (LOW) and 640 g (HIGH)**

metal-free model for building and construction, general industry, energy, logistics, maintenance, utilities, damp working conditions

SIZES **36 - 48** | EN ISO 20345: 2011
ART. NO. 62743 (LOW)
62733 (HIGH)



100% metal free



SUXXEED OFFROAD BLACK S3 HIGH S3 CI SRC

double density PU **sole**, excellent levels of grip, oil, hydrocarbon and chemical-resistant, self-cleaning sole profile, excellent shock absorption, injection moulded PU scuff cap | water-resistant black oiled grain leather **upper**, microfibre insert, water-resistant tongue and collar, reflective elements, non-metallic eyelets and hooks | 3D mesh **lining** for excellent breathability, quick drying | metal-free **toe cap** | metal-free **penetration-resistant midsole** | anatomically shaped **hygienic insole** with bottom layer of open cell foam, very high moisture absorption capacity, fast drying | **weight 640 g** in size 42

metal-free model for building and construction, general industry, energy, logistics, maintenance, utilities, damp working conditions

SIZES **36 - 48** | EN ISO 20345: 2011
ART. NO. 67203



100% metal free





SRC



S3



SUXXEED OFFROAD BLACK INOX S3 LOW S3 CI SRC

double density PU **sole**, excellent levels of grip, oil, hydrocarbon and chemical-resistant, self-cleaning sole profile, excellent shock absorption, injection moulded PU scuff cap | water-resistant black oiled grain leather **upper**, microfibre insert, water-resistant tongue and collar, reflective elements, non-metallic eyelets and hooks | 3D mesh **lining** for excellent breathability, quick drying | metal-free **toe cap** | stainless steel **penetration-resistant midsole** | anatomically shaped **hygienic insole** with bottom layer of open cell foam, very high moisture absorption capacity, fast drying | **weight 660 g** in size 42

model for building and construction, general industry, energy, logistics, maintenance, utilities, damp working conditions

SIZES **36 - 48** | EN ISO 20345: 2011
ART. NO. 67223



SUXXEED OFFROAD BLACK INOX S3 HIGH S3 CI SRC

double density PU **sole**, excellent levels of grip, oil, hydrocarbon and chemical-resistant, self-cleaning sole profile, excellent shock absorption, injection moulded PU scuff cap | water-resistant black oiled grain leather **upper**, microfibre insert, water-resistant tongue and collar, reflective elements, non-metallic eyelets and hooks | 3D mesh **lining** for excellent breathability, quick drying | metal-free **toe cap** | stainless steel **penetration-resistant midsole** | anatomically shaped **hygienic insole** with bottom layer of open cell foam, very high moisture absorption capacity, fast drying | **weight 690 g** in size 42

model for building and construction, general industry, energy, logistics, maintenance, utilities, damp working conditions

SIZES **36 - 48** | EN ISO 20345: 2011
ART. NO. 67213





SUXXEED OFFROAD S3 SNOW S3 CI SRC

double density PU **sole**, excellent levels of grip, oil, hydrocarbon and chemical-resistant, self-cleaning sole profile, excellent shock absorption, injection moulded PU scuff cap | water-resistant brown oiled grain leather **upper**, microfibre insert, reflective elements, very large handles | fleece **lining** for thermal insulation | metal-free **toe cap** | metal-free **penetration-resistant midsole** | anatomically shaped **hygienic insole** with bottom layer of open cell foam, very high moisture absorption capacity, fast drying | **weight 780 g** in size 42

metal-free winter boot for building and construction, general industry, energy, logistics, maintenance, utilities, damp working conditions

SIZES **36 - 48** | EN ISO 20345: 2011
ART. NO. 62753



100% metal free





MACSOLE®
SPORT 2.0

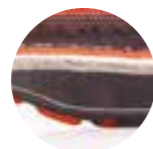
MACSOLE® SPORT 2.0 IS THE IDEAL RANGE FOR PEOPLE LOOKING FOR A LIGHTWEIGHT, ANTIMAGNETIC PRODUCT, DESIGNED LIKE A SPORTS SHOE.

Made for working in the fields of transport (couriers, drivers), logistics (forklift truck drivers, warehouses, messaging platforms) and light industry. The addition of reflective inserts help to increase the safety of night workers.



01
Sole extends up the heel
to facilitate driving

02
EVA foam
excellent shock absorption and very low weight



03
Scuff cap
extends product life | suitable for those **working in a crouching or kneeling position**



MACSOLE® EVA / rubber sole

SRA | resistance to oils & hydrocarbons, chemicals | resistance to contact heat up to 300°C (HRO standard) | antistatic

Sizing system Mondopoint R2, width 11

- 01** excellent abrasion and cut resistance
- 02** wide ground bearing-surface
- 03** self-cleaning sole profile increases slip resistance
- 04** sharp tread profile improves grip

CELL TECH
hygienic insole

removable | anatomically shaped



Non-metallic penetration-resistant midsole

resistance to penetration up to 1,100 Newton in accordance with the EN 20345 standard | **100% composite** | flexible | **antimagnetic** | **protects 100%** of the surface of the foot (as opposed to 85% on average for steel soles) | **lighter** than steel soles | conducts less heat and cold than a metal sole



Non-metallic protective toe cap

provides protection against falling objects up to 200 J and compression of up to 15,000 Newton in accordance with the EN 20345 standard | **antimagnetic** | **comfortable** due to its ergonomic shape | extra wide | **20% lighter** than a conventional steel toe cap | **conducts less** heat and cold than a metal toe cap





MACJUMP 2.0 S3 HRO SRA

EVA/MACSOLE® SPORT 2.0 rubber **sole** | liquid-resistant full-grain leather **upper**, solid PVC scuff cap, reflectors | mesh **lining** | metal-free **toe cap** | metal-free **penetration-resistant midsole** | CELL TECH **hygienic insole** | **weight 610 g** in size 42

wet environments, jobs in logistics, transport, light industry, services, local authorities, craft industries, second fit trades

SIZES **36 - 48** | EN ISO 20345: 2011
ART. NO. 63013



100%
metal
free



MACPULSE 2.0 S3 HRO SRA

EVA/MACSOLE® SPORT 2.0 rubber **sole** | liquid-resistant full-grain leather **upper**, solid PVC scuff cap, reflectors | mesh **lining** | metal-free **toe cap** | metal-free **penetration-resistant midsole** | CELL TECH **hygienic insole** | **weight 590 g** in size 42

wet environments, jobs in logistics, transport, light industry, services, local authorities, craft industries, second fit trades

SIZES **36 - 48** | EN ISO 20345: 2011
ART. NO. 62023



100%
metal
free





S1P



AIR



MACMOVE 2.0 + MACSPEED 2.0 S1P HRO SRA

EVA/MACSOLE® SPORT 2.0 rubber **sole** | suede and textile **upper**, solid PVC scuff cap, reflectors | mesh **lining** | metal-free **toe cap** | metal-free **penetration-resistant midsole** | CELL TECH **hygienic insole** | **weight 610 g** (MACMOVE) and **590 g** (MACSPEED) in size 42

dry environments, jobs in logistics, transport, light industry, services, local authorities, craft industries, second fit trades

SIZES **36-48** | EN ISO 20345: 2011
ART. NO. 63003 (MACMOVE 2.0)
62003 (MACSPEED 2.0)



100% metal free



MACAIR 2.0 S1P HRO SRA

EVA/MACSOLE® SPORT 2.0 rubber **sole** | breathable suede **upper** with large perforations, solid PVC scuff cap, reflectors, adjustable strap with fast opening and closing system | mesh **lining** | metal-free **toe cap** | metal-free **penetration-resistant midsole** | CELL TECH **hygienic insole** | **weight 570 g** in size 42

hot dry environments, jobs in logistics, transport, light industry, services, local authorities, craft industries, second fit trades

SIZES **36 - 48** | EN ISO 20345: 2011
ART. NO. 62033



100% metal free





MACSOLE®
ADVENTURE
2.0

THE ANTIMAGNETIC MACSOLE® ADVENTURE 2.0 RANGE IS DEDICATED TO DEMANDING WORK ENVIRONMENTS AND ANYONE LOOKING FOR AN AUTHENTIC OUTDOOR DESIGN.

Its deep tread, rubber-covered toe cap, lateral support together with its reinforced cast iron ankle support system make it the most versatile range bar none.

TECHNOLOGIES

MACSOLE® ADVENTURE 2.0

MACSOLE® X | RUN-R | SUXXEED OFFROAD | MACSOLE® SPORT 2.0 | **MACSOLE® ADVENTURE 2.0** | SUXXEED | FOCUS 2.0 | XXL PRO | MACSOLE® 1.0 | MACSOLE® PLUS 2.0 | MACSOLE® EXTREM 2.0



01 Reinforced at the back and sides
better supports the foot and heel | limits the risk of sprains

02 Rubber scuff cap
high abrasion resistance | extends product life | suitable for those working in a crouching or kneeling position



MACSOLE® rubber sole

SRC | resistance to oils & hydrocarbons, chemicals | resistance to contact heat up to 300°C (HRO standard) | antistatic

Sizing system Mondopoint R2, width 11

- 01** defined heel with sharp edges
- 02** sharp tread profile improves grip
- 03** all-terrain profile with deep treads
- 04** self-cleaning profile increases slip resistance
- 05** wide ground-bearing surface
- 06** excellent abrasion and cut resistance

CELL TECH hygienic insole

removable | anatomically shaped



textile top layer and large perforations for easy wicking of moisture

EVA cell structure



Non-metallic penetration-resistant midsole
resistance to penetration up to 1,100 Newton in accordance with the EN 20345 standard | 100% composite | flexible | antimagnetic | protects 100% of the surface of the foot (as opposed to 85% on average for steel soles) | lighter than steel soles | conducts less heat and cold than a metal sole



Non-metallic protective toe cap
provides protection against falling objects up to 200 J and compression of up to 15,000 Newton in accordance with the EN 20345 standard | antimagnetic | comfortable due to its ergonomic shape | extra wide | 20% lighter than a conventional steel toe cap | conducts less heat and cold than a metal toe cap





WR



SRC



MACEXPEDITION LOW 2.0 + 2.0 S3 CI HI WR HRO SRC

MACSOLE® ADVENTURE 2.0 rubber **sole** | textile **upper**, rubber scuff cap | reinforced heel and sides | GORE-TEX **lining** | metal-free **toe cap** | metal-free **penetration-resistant midsole** | anatomically shaped POLIYDU PU **hygienic insole** with shock absorption under the heel and ball of the foot | **weight 710 g** (LOW 2.0) and **720 g** (2.0) in size 42

humid outdoor environments, forestry

SIZES **36 - 48** | EN ISO 20345: 2011
ART. NO. 62123 (LOW 2.0)
63233 (2.0)



100% metal free



MACWILD LOW 2.0 + 2.0 S1P CI HI HRO SRC

MACSOLE® ADVENTURE 2.0 rubber **sole** | suede and textile **upper**, rubber scuff cap, reinforced heel and sides | mesh **lining** | metal-free **toe cap** | metal-free **penetration-resistant midsole** | CELL TECH **hygienic insole** | **weight 680 g** (LOW 2.0) and **690 g** (2.0) in size 42

model for working on uneven terrain, dry environments

SIZES **36 - 48** | EN ISO 20345: 2011
ART. NO. 62103 (LOW 2.0)
63213 (2.0)



100% metal free





MACCROSSROAD BROWN 2.0 S3 CI HI HRO SRC

MACSOLE® ADVENTURE 2.0 rubber **sole** | liquid-resistant full-grain leather **upper**, rubber scuff cap, reinforced heel and sides | mesh **lining** | metal-free **toe cap** | metal-free **penetration-resistant midsole** | CELL TECH **hygienic insole** | **weight 730 g** in size 42

multi-purpose model for walking on uneven terrain, humid environments

SIZES **36 - 48** | EN ISO 20345: 2011
ART. NO. 63893



100% metal free



MACCROSSROAD LOW 2.0 + 2.0 S3 CI HI HRO SRC

MACSOLE® ADVENTURE 2.0 rubber **sole** | liquid-resistant full-grain leather **upper**, rubber scuff cap, reinforced heel and sides | mesh **lining** | metal-free **toe cap** | metal-free **penetration-resistant midsole** | CELL TECH **hygienic insole** | **weight 720 g** (LOW 2.0) and **730 g** (2.0) in size 42

multi-purpose model for walking on uneven terrain, humid environments

SIZES **36 - 48** | EN ISO 20345: 2011
ART. NO. 62113 (LOW 2.0)
63223 (2.0)



100% metal free





SUXXEED

**THE SUXXEED RANGE IS CHARACTERISED
BY SUPERB SHOCK ABSORPTION
AND EXCEPTIONAL GRIP WHATEVER THE
WEATHER, WHATEVER THE SURFACE.**

The products in the SUXXEED range are designed for industry, trades, logistics, collective services, maintenance and industrial cleaning.



01
Soft comfort
flexible collar | thick comfortable foam | Climate Airmesh lining

02
Double density PU sole
excellent shock absorption and very low weight




Double density PU sole


SRC | resistance to oils & hydrocarbons, chemicals | antistatic | excellent shock absorption | very light

French (EU) sizing system, width 11

- 01** grooves at the back of the heel for a better grip when the heel first touches the ground
- 02** self-cleaning sole profile increases slip resistance
- 03** sharp tread profile improves grip
- 04** wide ground-bearing surface

 **Non-metallic penetration-resistant midsole**
resistance to penetration up to **1,100 Newton** in accordance with the EN 20345 standard | **100% composite** | flexible | **antimagnetic** | **protects 100%** of the surface of the foot (as opposed to 85% on average for steel soles) | **lighter** than steel soles | conducts less heat and cold than a metal sole



 **Non-metallic protective toe cap**
provides protection against falling objects up to **200 J** and compression of up to **15,000 Newton** in accordance with the EN 20345 standard | **antimagnetic** | **comfortable** due to its ergonomic shape | extra wide | **20% lighter** than a conventional steel toe cap | **conducts less** heat and cold than a metal toe cap





S1P SRC



S3



SUXXEED S1P LOW S1P SRC

double density PU sole | ultra-breathable suede upper, perforations for perfect ventilation | Climate Airmesh lining | metal-free toe cap | metal-free penetration-resistant midsole | removable hygienic insole with abrasion-resistant textile top layer | weight 585 g in size 42

tradesmen, warehousing and logistics, services, industry, hot environments, dry environments

SIZES 38 - 47 | EN ISO 20345: 2011
ART. NO. 62563



100% metal free

SUXXEED S3 LOW + S3 S3 SRC

double density PU sole | oiled hydro suede leather upper resistant to liquid penetration, collar and gusset in water-repellent fabric, fabric eyelets | Climate Airmesh lining | metal-free toe cap | metal-free penetration-resistant midsole | removable hygienic insole, top in abrasion-resistant fabric | weight 570 g (S3 LOW) and 615 g (S3) in size 42

tradesmen, heavy industry, warehousing and logistics, services, humid environments

SIZES 35 - 47 | EN ISO 20345: 2011
ART. NO. 62553 (S3 LOW)
63903 (S3)



100% metal free





FOCUS 2.0

THE FOCUS 2.0 RANGE IS EXTREMELY VERSATILE MEETING THE DEMANDS OF A RANGE OF INDUSTRY PROFESSIONALS INCLUDING THOSE WORKING IN LIGHT INDUSTRY TO CONSTRUCTION AND OFFERS EXCELLENT VALUE FOR MONEY.

This multipurpose product boasts lightweight features such as the dual density PU sole delivering superb shock absorption and metal-free toe cap and penetration-resistant midsole.



01 Reflective elements
improves wearer's visibility

02 Double density PU sole
excellent shock absorption and very low weight

03 Padded collar
for better comfort and protection on the malleoli and Achilles tendon areas



PU2D sole

SRC | resistance to oils & hydrocarbons, chemicals | **antistatic** | optimum flexibility & shock absorption

French (EU) sizing system, width 11

- 01** double density PU sole for excellent shock absorption and very low weight
- 02** rear grooves improve adhesion during first contact to heel to floor
- 03** wide ground-bearing surface
- 04** sharp tread profile improves grip
- 05** pronounced heel
- 06** self-cleaning profile increases slip resistance
- 07** front grooves for better grip

Insole

anatomically shaped | antistatic



textile top layer and perforations for easy wicking of moisture



EVA bottom layer and perforations with EVA heel shock absorber



Non-metallic penetration-resistant midsole

resistance to penetration up to **1,100 Newton** in accordance with the EN 20345 standard | **100% composite** | flexible | **antimagnetic** | **protects 100%** of the surface of the foot (as opposed to 85% on average for steel soles) | **lighter** than steel soles | conducts less heat and cold than a metal sole



Non-metallic protective toe cap

provides protection against falling objects up to **200 J** and compression of up to **15,000 Newton** in accordance with the EN 20345 standard | **antimagnetic** | **comfortable** due to its ergonomic shape | extra wide | **20% lighter** than a conventional steel toe cap | **conducts less** heat and cold than a metal toe cap





S1P



S3



FOCUS 2.0 SANDAL + PERFO S1P SRC

double density PU **sole**, grip, oil, hydrocarbon and chemical-resistant, self-cleaning profile, shock absorption | ultra-breathable oiled nubuck leather **upper**, large perforations for perfect ventilation, Velcro fastening (SANDAL) | ultra-breathable oiled nubuck perforated leather **upper**, reflective elements, non-metallic eyelets and hooks (PERFO) | 3D polyester mesh **lining** for excellent breathability, quick drying | metal-free **toe cap** | metal-free **penetration-resistant midsole** | anatomically shaped **hygienic insole**, textile top layer and perforations, EVA heel shock absorber | **weight 630 g** (SANDAL) and **610 g** (PERFO) in size 42

metal-free model suitable for hot and dry environments, industry, logistics, warehousing, general maintenance, tradespeople



100% metal free

SIZES **36 - 48** | EN ISO 20345: 2011
ART. NO. 67033 (SANDAL)
67023 (PERFO)

FOCUS 2.0 S3 LOW + HIGH S3 SRC

double density PU **sole**, grip, oil, hydrocarbon and chemical-resistant, self-cleaning sole profile, shock absorption | water-resistant and padded **tongue** with gussets to keep dirt and debris out | water-resistant oiled nubuck leather and textile **upper**, reflective elements, non-metallic eyelets and hooks, padded collar | 3D polyester mesh **lining** for excellent breathability, quick drying | metal-free **toe cap** | metal-free **penetration-resistant midsole** | anatomically shaped **hygienic insole**, textile top layer and perforations, EVA heel shock absorber | **weight 610 g** (LOW) and **660 g** (HIGH) in size 42

building and construction, general industry, energy, logistic, maintenance, damp working conditions



100% metal free

SIZES **36 - 48** | EN ISO 20345: 2011
ART. NO. 67013 (LOW)
67003 (HIGH)





XXL PRO

THE XXL PRO RANGE IS THE IDEAL SOLUTION FOR PEOPLE WORKING IN HEAVY CONSTRUCTION OR QUARRIES.

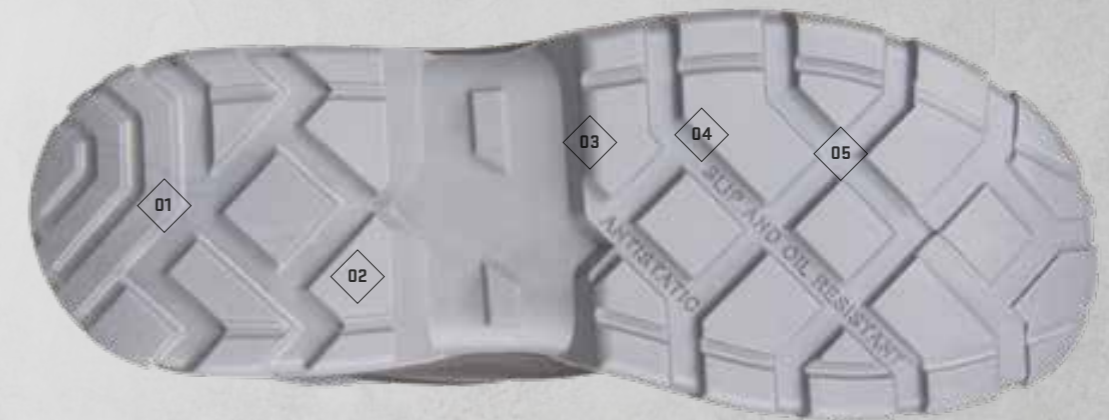
Its wraparound soles made of dual density PU combined with leathers that are very resistant to abrasion and liquids, provide 360° protection.



01 Soft comfort
collar made of flexible synthetic material | thick comfortable foam | 3D mesh lining

02 Wraparound double density PU sole
tough | protects against liquids and mud | stabilises and supports the ankle | exceptional shock absorption properties (over 40 J)

03 Injection moulded PU scuff cap
extends product life | suitable for those working in a crouching or kneeling position



Double density PU sole

SRC | resistance to oils & hydrocarbons, chemicals | antistatic

Sizing system Mondopoint R2, width 11

- 01** grooves at the back of the heel for a better grip when the heel first touches the ground
- 02** defined heel with sharp edges
- 03** self-cleaning sole profile increases slip resistance
- 04** sharp tread profile improves grip
- 05** deep treads



microfibre top layer | very good abrasion resistance and moisture absorption | quick drying

HYDROFLEX hygienic insole

removable | anatomically shaped | antistatic

bottom layer of open cell foam: good moisture absorption and wicking properties | quick drying | shock absorption under the ball of the feet



TETRA PRO S3 CI SRC

double density PU **sole** | full-grain pigmented liquid-resistant leather **upper**, waterproof leather gusset | 3D-Distance-Mesh **lining** | steel **toe cap** | stainless steel **penetration-resistant midsole** | HYDROFLEX **hygienic insole** | **weight 650 g** in size 42

building and construction, quarries

SIZES **38 - 48** | EN ISO 20345: 2011
ART. NO. 62783



ALPHA PRO S3 CI SRC

double density PU **sole** | full-grain pigmented liquid-resistant leather **upper**, waterproof leather gusset | 3D-Distance-Mesh **lining** | steel **toe cap** | stainless steel **penetration-resistant midsole** | HYDROFLEX **hygienic insole** | **weight 750 g** in size 42

building and public services, construction and civil engineering, quarries

SIZES **38 - 48** | EN ISO 20345: 2011
ART. NO. 63913

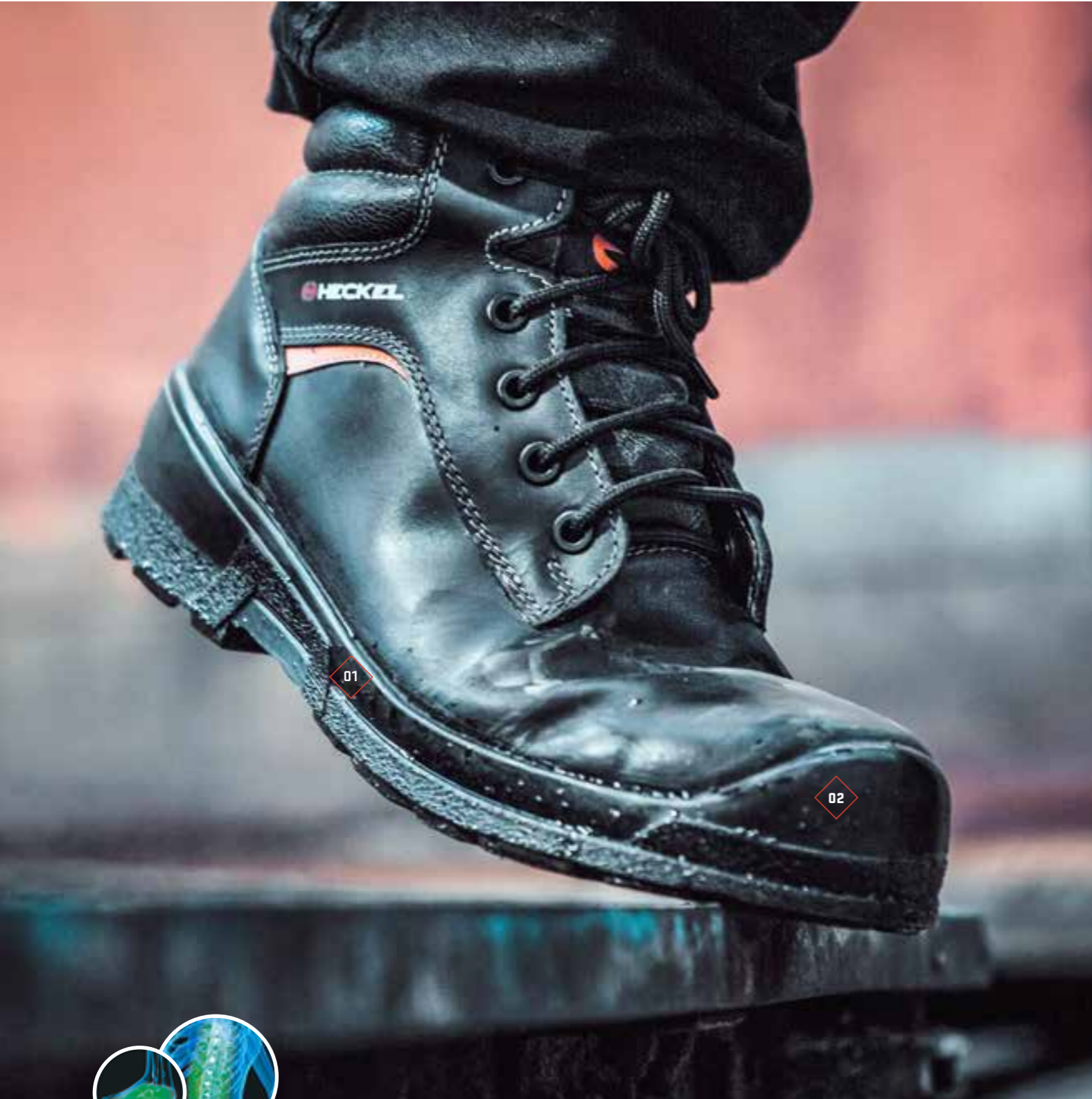




MACSOLE®
1.0

DESIGNED FOR THE CONSTRUCTION INDUSTRY, WORKING IN HUMID ENVIRONMENTS OR ON HOT GROUND, STEELMAKING OR ENGINEERING SHOPS, THIS RANGE IS EXCEPTIONALLY COMFORTABLE AND CAPABLE OF WITHSTANDING THE HARSHTEST CONDITIONS, DUE TO THE MACSOLE® 1.0 SOLE TECHNOLOGY.

The combination of PU (shock absorption, low weight) and rubber (durable, versatile, slip resistance) provides excellent weather resistance as well as meeting users' expectations on sturdiness and weight.



01 Modular sole system
excellent stability | shock absorption | contains no products harmful to the skin | washable | removable insole | optimum comfort | reduces the impact on the foot joints and the spine

02 Non-metallic protective toe cap
provides protection against falling objects up to 200 J and compression of up to 15,000 Newton in accordance with the EN 20345 standard | 100% antimagnetic | comfortable due to its ergonomic shape | extra wide | 20% lighter than a conventional steel toe cap | conducts less heat and cold than a metal toe cap



MACSOLE® rubber sole

resistance to oils & hydrocarbons, chemicals | resistance to contact heat up to 300°C (HRO standard) | antistatic | durability | stability

Sizing system Mondopoint R2, width 11

STANDARD SOLE

- 01** MICROGRIP profile for good slip resistance even in winter
- 02** defined heel with sharp edges
- 03** GRIPSTEP profile for ladders and stairs
- 04** sharp tread profile improves grip
- 05** self-cleaning sole profile increases slip resistance
- 06** slip-resistant to SRC standard
- 07** wide ground-bearing surface
- 08** rubber scuff cap



MACSOLE® 1.0 NTX SOLE

- 01** slightly grained walking sole | slip-resistant to SRA standard
- 02** smooth sole to avoid leaving tread marks on asphalt

MACSOLE® 1.0 XCB hygienic insole

removable | anatomically shaped | antistatic | washable at 30°C | good skin tolerability Oeko-Tex® certified material Standard 100



- 01** very good shock absorption to reduce the impact on the foot joints and spine
- 02** soft surface material | adapts to the shape of the foot
- 03** stability | anatomically shaped | arch support system
- 04** dynamic shock absorption | thin structure improves the dynamics on the underneath of the foot | reduces fatigue
- 05** high breathability | perforations improve ventilation



MACSOLE® 1.0 INH S3 CI HI HRO SRC

MACSOLE® 1.0 rubber **sole** | pigmented leather **upper**, reflectors, derby cut fits any foot, fewer seams, coagulated PU collar | mesh **lining**, high abrasion resistance, efficient moisture wicking, quick drying | metal-free **toe cap** | stainless steel **penetration-resistant midsole** | MACSOLE® 1.0 XCB **hygienic insole** | **weight 770 g** in size 42

very versatile model for construction and civil engineering, hot ground, humid environments

SIZES **36 - 48** | EN ISO 20345: 2011
ART. NO. 62903



MACSOLE® 1.0 FXL + FXH S3 CI HI HRO SRC

MACSOLE® 1.0 rubber **sole** | full-grain leather **upper**, reflectors, derby cut fits any foot, fewer seams, waterproof leather collar and gusset, plastic eyelets | mesh **lining**, high abrasion resistance, efficient moisture wicking, quick drying | metal-free **toe cap** | metal-free **penetration-resistant midsole** | MACSOLE® 1.0 XCB **hygienic insole** | **weight 680 g (FXL) and 730 g (FXH)** in size 42

very versatile non-magnetic model for construction and civil engineering, public services, hot ground, humid environments

SIZES **36 - 48** | EN ISO 20345: 2011
ART. NO. 62513 (FXL)
62923 (FXH)





MACSOLE® 1.0 NTX SBP WRU HI HRO SRA

MACSOLE® 1.0 smooth rubber **sole** | pigmented leather **upper**, reflectors, derby cut fits any foot, fewer seams, leather gusset | mesh **lining**, high abrasion resistance, efficient moisture wicking, quick drying | metal-free toe cap | stainless steel **penetration-resistant midsole** | MACSOLE® 1.0 ETC **hygienic insole** | **weight 780 g** in size 42

for asphalting

SIZES **38 - 48** | EN ISO 20345: 2011
ART. NO. 62993



MACSOLE® 1.0 WLD LOW + WLD 3 S3 CI HI-1 HRO WG SRC

MACSOLE® 1.0 rubber **sole** | pigmented leather **upper**, seams sewn with flame-resistant Kevlar®, pigmented leather anti-projection flap with a double Velcro fastening, fewer seams, waterproof grain leather gusset | black high abrasion resistant, non-woven fabric **lining** | metal-free **toe cap** | stainless steel **penetration-resistant midsole** | MACSOLE® 1.0 XCB **hygienic insole** | **weight 810 g** (WLD LOW) and **900 g** (WLD 3) in size 42

for welding, steelworks and workplaces where there is a risk of molten metal splash

SIZES **38 - 48** | EN ISO 20345: 2011
ART. NO. 62963 (WLD LOW)
62543 (WLD 3)





MACSOLE® 1.0 BFX 1 S3 CI HI HRO SRC

MACSOLE® 1.0 rubber **sole** | brown oiled full-grain leather pull-up boot **upper**, fewer seams | **lining** black high abrasion-resistant non-woven fabric | metal-free **toe cap** | metal-free **penetration-resistant midsole** | MACSOLE® 1.0 XCB **hygienic insole** | **weight 820 g** in size 42

non-magnetic, boot for outdoor work, building and public works, humid environments

SIZES **36 - 48** | EN ISO 20345: 2011
ART. NO. 62933



MACSOLE® 1.0 BFX 2 (WINTER) S3 CI HI HRO SRC

MACSOLE® 1.0 rubber **sole** | brown oiled full-grain leather pull-up boot **upper**, fewer seams | **lining** black high abrasion-resistant fleece | metal-free **toe cap** | metal-free **penetration-resistant midsole** | MACSOLE® 1.0 XCB **hygienic insole** | **weight 830 g** in size 42

non-magnetic, winter boot for outdoor work, building and civil engineering, damp working conditions

SIZES **36 - 48** | EN ISO 20345: 2011
ART. NO. 62973





MACSOLE®
PLUS 2.0

THE MACSOLE® PLUS 2.0 RANGE WITH MACSOLE® RUBBER SOLE TECHNOLOGY IS EXTREMELY DURABLE MAKING IT SUITABLE FOR A MULTITUDE OF ENVIRONMENTS.

The abrasion-resistant all-terrain sole profile with outstanding grip, even in damp working conditions, is resistant to contact heat up to 300°C (HRD). The new MACSOLE® PLUS 2.0 range appeals to wearers for its technical performance, comfort features and value for money.



01
EVA insert
in forefoot and heel for an excellent shock absorption

02
Rubber scuff cap
high abrasion resistance | extends product life | suitable for those working in a crouching or kneeling position

03
Padded collar
for better comfort and protection on the malleoli and Achilles tendon areas



**MACSOLE®
rubber sole**

SRC | resistance to oils & hydrocarbons, chemicals | resistance to contact heat up to 300°C (HRO standard) | **antistatic**

French (EU) sizing system, width 11

- 01** wide ground-bearing surface
- 02** pronounced heel
- 03** GRIPSTEP profile for extra grip on ladders & stairs
- 04** self-cleaning profile increases slip resistance
- 05** sharp tread profile improves grip
- 06** excellent abrasion resistance
- 07** front grooves for better grip

Insole

anatomically shaped | antistatic



textile over layer: very good abrasion resistance | absorbant | fast drying

bottom layer of open cell foam: very high moisture absorption capacity | fast drying



Non-metallic penetration-resistant midsole

resistance to penetration up to 1,100 Newton in accordance with the EN 20345 standard | **100% composite** | flexible | **antimagnetic** | **protects 100%** of the surface of the foot (as opposed to 85% on average for steel soles) | **lighter** than steel soles | conducts less heat and cold than a metal sole



Non-metallic protective toe cap

provides protection against falling objects up to 200 J and compression of up to 15,000 Newton in accordance with the EN 20345 standard | **antimagnetic** | **comfortable** due to its ergonomic shape | extra wide | **20% lighter** than a conventional steel toe cap | **conducts less** heat and cold than a metal toe cap





MACSTOPAC 300 S3 HIGH S3 HRO SRC

MACSOLE® PLUS 2.0 rubber **sole**, EVA insert in forefoot and heel for excellent shock absorption, excellent levels of grip, oil, hydrocarbon and chemical-resistant, resistant to contact heat up to 300°C, rubber scuff cap | water-resistant grain leather **upper**, fewer seams, padded collar | Distance-Mesh **lining** for excellent breathability, quick drying | metal-free **toe cap** | metal-free **penetration-resistant midsole** | anatomically shaped **hygienic insole** with bottom layer of open cell foam, very high moisture absorption capacity, fast drying | **weight 690 g** in size 42

versatile model for construction, general industry, heavy industry, hot ground, damp working conditions

SIZES **37 - 48** | EN ISO 20345: 2011
ART. NO. 67153



MACSTOPAC 200 S3 LOW + HIGH S3 HRO SRC

MACSOLE® PLUS 2.0 rubber **sole**, EVA insert in forefoot and heel for excellent shock absorption, excellent levels of grip, oil, hydrocarbon and chemical-resistant, resistant to contact heat up to 300°C, rubber scuff cap | water-resistant grain leather **upper**, fewer seams, padded collar | Distance-Mesh **lining** for excellent breathability, quick drying | metal-free **toe cap** | stainless steel **penetration-resistant midsole** | anatomically shaped **hygienic insole** with bottom layer of open cell foam, very high moisture absorption capacity, fast drying | **weight 660 g** [LOW] and **690 g** [HIGH] en pointure 42

versatile model for construction, general industry, heavy industry, hot ground, damp working conditions

SIZES **37 - 48** | EN ISO 20345: 2011
ART. NO. 67143 [LOW]
67123 [HIGH]





SRC



S3

MACSTOPAC 100 BROWN S3 HIGH S3 HRO SRC

MACSOLE® PLUS 2.0 rubber **sole**, EVA insert in forefoot and heel for excellent shock absorption, excellent levels of grip, oil, hydrocarbon and chemical-resistant, resistant to contact heat up to 300°C, rubber scuff cap | water-resistant brown grain leather **upper**, fewer seams, padded collar | Distance-Mesh **lining** for excellent breathability, quick drying | steel **toe cap** | stainless steel **penetration-resistant midsole** | anatomically shaped **hygienic insole** with bottom layer of open cell foam, very high moisture absorption capacity, fast drying | **weight 700 g** in size 42

versatile model for construction, general industry, heavy industry, hot ground, damp working conditions

SIZES **37 - 48** | EN ISO 20345: 2011
ART. NO. 67113

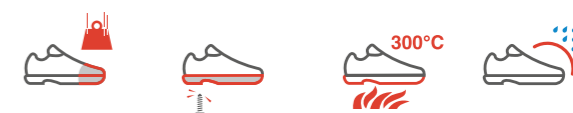


MACSTOPAC 100 BLACK S3 HIGH S3 HRO SRC

MACSOLE® PLUS 2.0 rubber **sole**, EVA insert in forefoot and heel for excellent shock absorption, excellent levels of grip, oil, hydrocarbon and chemical-resistant, resistant to contact heat up to 300°C, rubber scuff cap | water-resistant black grain leather **upper**, fewer seams, padded collar | Distance-Mesh **lining** for excellent breathability, quick drying | steel **toe cap** | stainless steel **penetration-resistant midsole** | anatomically shaped **hygienic insole** with bottom layer of open cell foam, very high moisture absorption capacity, fast drying | **weight 700 g** in size 42

versatile model for construction, general industry, heavy industry, hot ground, damp working industry

SIZES **37 - 48** | EN ISO 20345: 2011
ART. NO. 67103





MACSOLE®
EXTREM 2.0

**WHEREVER RISKS ARE HIGH,
ENVIRONMENTS HARSH OR CONDITIONS
EXTREME, MACSOLE® EXTREM 2.0
RUBBER SOLE TECHNOLOGY IS THE BEST
PERFORMING SOLUTION.**

The MACSOLE® rubber sole technology performs in high risk environments without compromising comfort. Exceptional grip, resistance to extreme temperatures, resistance to aggressive chemicals and shock absorption all come as standard.



MACSILVER 2.0 S3 CI HI HRO SRC

MACSOLE® EXTREM 2.0 rubber **sole** | full-grain leather **upper**, reflective elements, derby cut fits any foot, fewer seams for greater comfort, padded tongue and collar | 3D-Distance-Mesh **lining** | metal-free **toe cap** | metal-free **penetration-resistant midsole** | Thermoshield® Xtrem **hygienic insole** with thermal insulation, anatomically shaped footbed, moisture absorption system, shock absorber | **weight 840 g** in size 42

heavy industry, construction, engineering shops, hot conditions, humid environments

SIZES **36 - 48** | EN ISO 20345: 2011
ART. NO. 62803



MACSILVER INTEGRAL 2.0 S3 M CI HI HRO SRC

MACSOLE® EXTREM 2.0 rubber **sole** | full-grain leather **upper**, reflective elements, derby cut fits any foot, fewer seams for greater comfort, padded tongue and collar, totally painless 100 J metatarsal protection | 3D-Distance-Mesh **lining** | metal-free **toe cap** | metal-free **penetration-resistant midsole** | Thermoshield® Xtrem **hygienic insole** with thermal insulation, anatomically shaped footbed, moisture absorption system, shock absorber | **weight 880 g** in size 42

risk of objects falling on the metatarsals, work with high pressure cleaners, steelworks, foundries

SIZES **36 - 48** | EN ISO 20345: 2011
ART. NO. 62883



ACCESSORIES



RUN-R INSOLE

approved for **RUN-R** and **SUXXEED OFFROAD** ranges | **anatomically shaped** | **antistatic system** | **washable** at 30°C | **shock absorption** in heel and forefoot areas | **arch support** | high quality microfibre top layer, excellent **abrasion resistance**, **moisture absorption, quick drying** | bottom layer of open cell foam: **good moisture absorption and wicking properties, quick drying**

SIZES **37 - 48**
ART. NO. 62997



SUXXEED INSOLE

approved for the **SUXXEED** range | **anatomically shaped** | **antistatic system** | **washable** at 40°C | **shock absorption** | textile surface structure | bottom layer of EVA foam

SIZES **35 - 47**
ART. NO. 62996



MACSOLE® 1.0 XCB (STANDARD CONDITIONS) + ETC (THERMAL INSULATION)

XCB approved for the **MACSOLE® 1.0** range | **PU removable sole**, anatomically shaped, antistatic, microfibre upper, perforated | packaging: sold by size and individually wrapped | **weight 65 g** in size 42

SIZES **36 - 48**
ART. NO. 62999



ETC approved for **MACSOLE® 1.0 NTX** model | **aluminised removable sole**, anatomically shaped, antistatic | memory foam | activated carbon anti-odour treatment | **weight 50 g** in size 42

SIZES **38 - 48**
ART. NO. 96661



UVEX 3D HYDROFLEX® FOAM

approved for the **MACSOLE® ADVENTURE 2.0** range | **uvex insole new generation** | additional shock **absorbing elements** in the heel and under the front of the foot | **highly breathable** and moisture-absorbing materials | perforations to **improve ventilation** | **shock absorption** zones to support natural movement | **non-irritating**, comfortable surface structure | **antistatic system** | supports the foot arch

SIZES **35 - 50**
ART. NO. 95956



SOCKS

colour black | **composition** 77% cotton 21% polyamide 2% elastane | available in **2 sizes** 37/41 or 42/46 | **individual packaging** | suitable for retail

ART. NO. 1051118 (P37/41)
1051119 (P42/46)



SAMPLE BAG

colour black | with a **dual compartment** | **dimensions** 75×41×28 cm

ART. NO. 1051121

MERCHANDISING



SHELF DISPLAY

material expanded 5 mm PVC | **dimension** 300 × 120 × 250 mm |
fixing 4 adhesive transparent pads

ART. NO. 1051086



COUNTER DISPLAY

structure plexi | **height** 322 mm |
presentation of 1 shoe

ART. NO. 1051055



STOOL

colour black | **dimensions** 38 x 38 x 38 cm | **weight** 2 kg |
outside material polyester fabric 220 g

ART. NO. 1051106



PLASTIC DISPLAY MATERIAL

structure steel structure | **plastic display material** | **height** 185 cm | **presentation** on 2 sides | **total** 10 shoes | **manually build with building tools** included in delivery

ART. NO. 1051122

OVERVIEW

ART. NO.	DESIGNATION	SIZES	TYPE	EN ISO 20345	Industry Icons							Page
					Building and Public Works - Construction shell	Craft - Second fit trades	Energy and Environment	Logistics - Transport - Services - Trade	Industry	Heavy industry	Agriculture - Green spaces	
63923	MX 100 GT	37 → 48	Zip-up winter boot	S3 CI HI WR HRO SRC								16/17
63943	MX 200 GT HIGH	37 → 48	Lace-up boot	S3 CI HI WR HRO SRC								19
63963	MX 200 GT LOW	37 → 48	Shoe	S3 CI HI WR HRO SRC								18
63933	MX 300 GT	37 → 48	Lace-up boot	S3 CI HI WR HRO SRC								21
63953	MX 400 GT	37 → 48	Lace-up boot	S3 CI HI WR HRO SRC								20
63973	MX 500	37 → 48	Zip-up boot	S3 HI HRO SRC								22/23
62673	RUN-R 500	35 → 48	Shoe	S1P SRC								28
62683	RUN-R 510	35 → 48	Shoe	S1P SRC								29
62693	RUN-R 520	35 → 48	Shoe	S1P SRC								30
62703	RUN-R 530	35 → 48	Shoe	S1P SRC								31
62585	RUN-R 120 LOW BOA®	35 → 48	Shoe	S1P SRC								33
62633	RUN-R 110 LOW	37 → 48	Shoe	S1P SRC								34
62573	RUN-R 100 HIGH	37 → 48	Lace-up boot	S1P SRC								32
62583	RUN-R 100 LOW	37 → 48	Shoe	S1P SRC								32
62593	RUN-R 200	37 → 48	Shoe	S1P SRC								35
62643	RUN-R 210	37 → 48	Shoe	S1P SRC								35
67043	RUN-R 600 HIGH	35 → 48	Lace-up boot	S3 SRC								37
67053	RUN-R 600 LOW	35 → 48	Shoe	S3 SRC								36
62663	RUN-R 300 HIGH	37 → 48	Lace-up boot	S3 SRC								38
62603	RUN-R 300 LOW	37 → 48	Shoe	S3 SRC								38
62613	RUN-R 400 HIGH	37 → 48	Lace-up boot	S3 SRC								39
62653	RUN-R 400 LOW	37 → 48	Shoe	S3 SRC								39
67203	SUXXEED OFFROAD BLACK S3 HIGH	36 → 48	Lace-up boot	S3 CI SRC								45
62733	SUXXEED OFFROAD S3 HIGH	36 → 48	Lace-up boot	S3 CI SRC								44
62743	SUXXEED OFFROAD S3 LOW	36 → 48	Shoe	S3 CI SRC								44
67213	SUXXEED OFFROAD BLACK INOX S3 HIGH	36 → 48	Lace-up boot	S3 CI SRC								47
67223	SUXXEED OFFROAD BLACK INOX S3 LOW	36 → 48	Shoe	S3 CI SRC								46
62753	SUXXEED OFFROAD S3 SNOW	36 → 48	Winter boot	S3 CI SRC								48/49
62033	MACAIR 2.0	36 → 48	Sandal	S1P HRO SRA								57
62003	MACSPEED 2.0	36 → 48	Shoe	S1P HRO SRA								56
63003	MACMOVE 2.0	36 → 48	Lace-up boot	S1P HRO SRA								56
62023	MACPULSE 2.0	36 → 48	Shoe	S3 HRO SRA								55
63013	MACJUMP 2.0	36 → 48	Lace-up boot	S3 HRO SRA								54
63233	MACEXPEDITION 2.0	36 → 48	Lace-up boot	S3 CI HI WR HRO SRC								62
62123	MACEXPEDITION LOW 2.0	36 → 48	Shoe	S3 CI HI WR HRO SRC								62
63223	MACCROSSROAD 2.0	36 → 48	Lace-up boot	S3 CI HI HRO SRC								65
62113	MACCROSSROAD LOW 2.0	36 → 48	Shoe	S3 CI HI HRO SRC								65
63893	MACCROSSROAD BROWN 2.0	36 → 48	Lace-up boot	S3 CI HI HRO SRC								64
63213	MACWILD 2.0	36 → 48	Lace-up boot	S1P CI HI HRO SRC								63
62103	MACWILD LOW 2.0	36 → 48	Shoe	S1P CI HI HRO SRC								63
63903	SUXXEED S3	35 → 47	Lace-up boot	S3 SRC								71
62553	SUXXEED S3 LOW	35 → 47	Shoe	S3 SRC								71
62563	SUXXEED S1P LOW	38 → 47	Shoe	S1P SRC								70
67003	FOCUS 2.0 S3 HIGH	36 → 48	Lace-up boot	S3 SRC								77
67013	FOCUS 2.0 S3 LOW	36 → 48	Shoe	S3 SRC								77
67023	FOCUS 2.0 PERFO	36 → 48	Shoe	S1P SRC								76
67033	FOCUS 2.0 SANDAL	36 → 48	Sandal	S1P SRC								76
63913	ALPHA PRO	38 → 48	Lace-up boot	S3 CI SRC								83
62783	TETRA PRO	38 → 48	Shoe	S3 CI SRC								82
62543	MACSOLE® 1.0 WLD 3	38 → 48	Zip-up welder boot	S3 CI HI-1 HRO WG SRC [EN 20349:2010]								91
62963	MACSOLE® 1.0 WLD LOW	38 → 48	Lace-up welder boot	S3 CI HI-1 HRO WG SRC [EN 20349:2010]								91
62923	MACSOLE® 1.0 FXH	36 → 48	Lace-up boot	S3 CI HI HRO SRC								89
62513	MACSOLE® 1.0 FXL	36 → 48	Shoe	S3 CI HI HRO SRC								89
62903	MACSOLE® 1.0 INH	36 → 48	Lace-up boot	S3 CI HI HRO SRC								88
62933	MACSOLE® 1.0 BFX 1	36 → 48	Boot	S3 CI HI HRO SRC								92
62973	MACSOLE® 1.0 BFX 2	36 → 48	Winter boot	S3 CI HI HRO SRC								93
62993	MACSOLE® 1.0 NTX	38 → 48	Lace-up boot	SBP WRU HI HRO SRA								90
67103	MACSTOPAC 100 BLACK S3 HIGH	37 → 48	Lace-up boot	S3 HRO SRC								101
67113	MACSTOPAC 100 BROWN S3 HIGH	37 → 48	Lace-up boot	S3 HRO SRC								100
67123	MACSTOPAC 200 S3 HIGH	37 → 48	Lace-up boot	S3 HRO SRC								99
67143	MACSTOPAC 200 S3 LOW	37 → 48	Shoe	S3 HRO SRC								99
67153	MACSTOPAC 300 S3 HIGH	37 → 48	Lace-up boot	S3 HRO SRC								98
62803	MACSILVER 2.0	36 → 48	Lace-up boot	S3 CI HI HRO SRC								104
62883	MACSILVER INTEGRAL 2.0	36 → 48	Lace-up boot	S3 M CI HI HRO SRC								105

UVEX HECKEL s.a.s

44 rue d'Engwiller | La Walck | 67350 Val de Moder | France

Tel. +33 388 07 61 08 | **Fax** +33 388 72 51 06

E-Mail France contact.france@uvex-heckel.fr

E-Mail Export contact.export@uvex-heckel.fr

www.heckel.fr