



uvex

uvex prescription
safety eyewear
2026

protecting people

Working together for a safer future

Ordering and dispensing prescription safety eyewear is simple with uvex.



Our in-house experts collaborate with your organisation, the optician and the distribution partner to ensure every pair of glasses meets both safety standards and the unique vision requirements of each wearer. The outcome is comfortable, compliant eyewear that not only protects your workforce but also supports overall productivity.



Why partner with uvex?

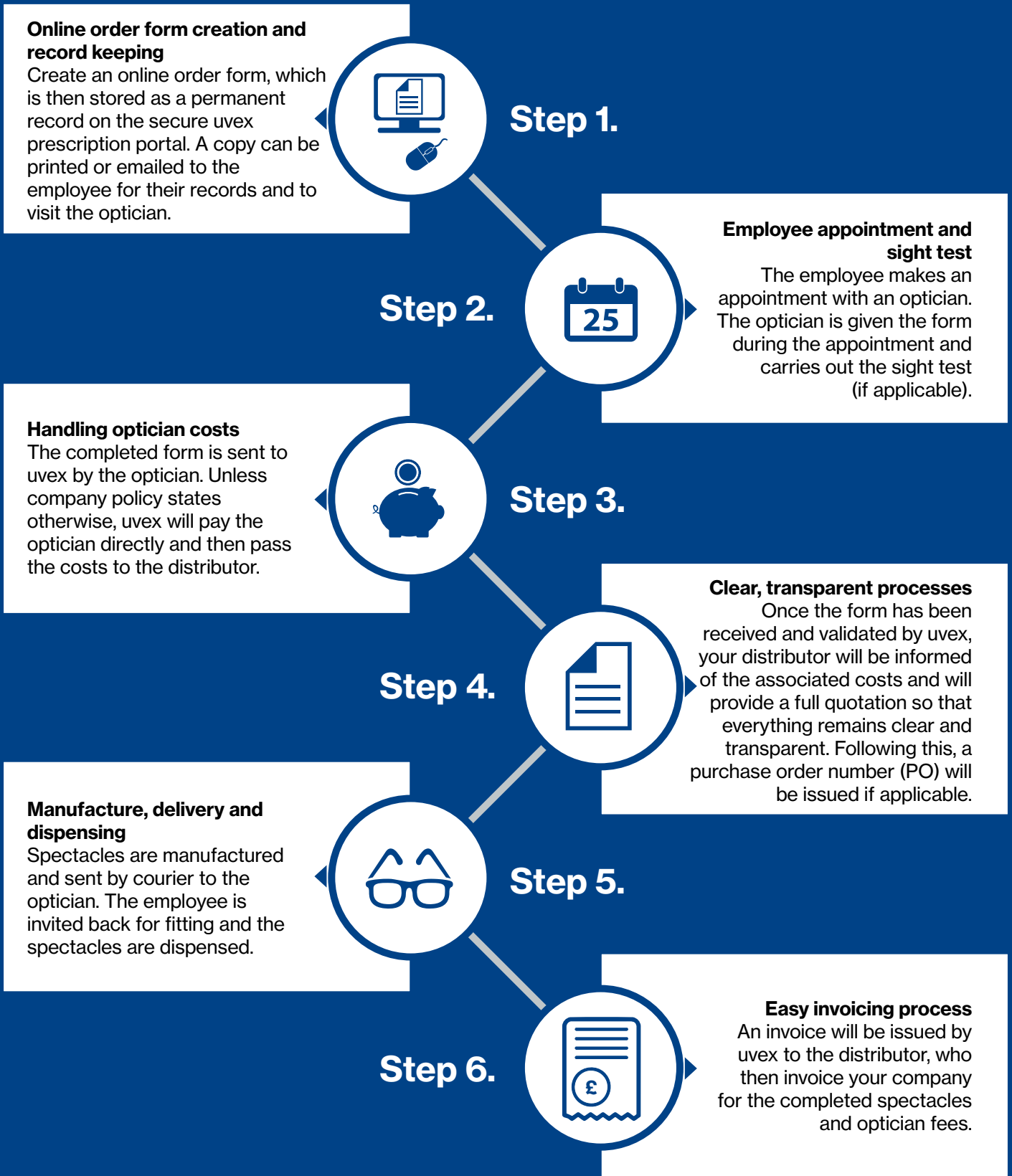
- ✓ 100 years of expertise in safety eyewear
- ✓ Suitable for businesses of any size
- ✓ Produced by uvex and trusted partners, ensuring consistent quality and faster lead times
- ✓ Streamlined process – simple, efficient, and hassle-free
- ✓ Lenses powered by Essilor, a world-leading lens technology provider
- ✓ Simplified administration – orders stored in a secure database for easy access and full traceability
- ✓ Smart online ordering – fast, paperless, and fully trackable
- ✓ No prepaid vouchers required – invoicing through your existing PPE supplier
- ✓ Faster turnaround, especially when working with an optician also active on the portal
- ✓ Rapid delivery – 86% of jobs delivered within 5 working days



Table of contents

■	uvex prescription online ordering: process overview	4
■	Safety prescription eyewear and VDU glasses	5
■	The importance of safety prescription eyewear	6
■	Why choosing the right lens matters for impact protection	7
■	Selecting the ideal lens for your work	8
■	Finding the best progressive lens	9
■	Lens coatings and their benefits	10
■	What's the difference between a tint and a photochromic lens?	12
■	Understanding eyewear standards and their markings	14
■	Information for wearers	18
■	Information for Authorising Officers	20
■	uvex RX bc metal frames	22
■	uvex RX bc plastic frames	25
■	uvex RX cd frames	27
■	uvex RX sp frames	32
■	Prescription safety inserts uvex RX cf	33
■	Self-contained Breathing Apparatus inserts	34
■	uvex i-3 add - safety spectacles with integrated dioptr	35
■	uvex VDU spectacles	36
■	Sustainability at uvex safety	39

uvex prescription online ordering: process overview



Protect vision at work

with prescription safety eyewear and VDU glasses

Our eyes are invaluable, yet in 2024, there were more than **57,000 emergency hospital visits** due to workplace-related eye injuries, based on NHS FOI data*. Whether in industrial settings or working long hours at a computer, our specialist eyewear solutions are designed to safeguard your vision and promote long-term eye health.



1 in 8

industrial workers
report frequent eye
injuries or strain*



82,000

cases involved
foreign objects
entering the eye**

Legal obligations for employers

Employers are required to protect employee eye health under The Health and Safety at Work Act 1974, section 2.1 "It shall be the duty of every employer to ensure, so far as is reasonably practicable, the health, safety and welfare at work of all his employees.". This includes providing appropriate personal protective equipment, such as prescription safety glasses when necessary, and offering sufficient information, instruction, and training on PPE use.

For employees using Visual Display Units (VDU's), employers must cover the cost of eye tests and provide glasses if they are needed exclusively for screen work. [Source: hse.gov.uk].

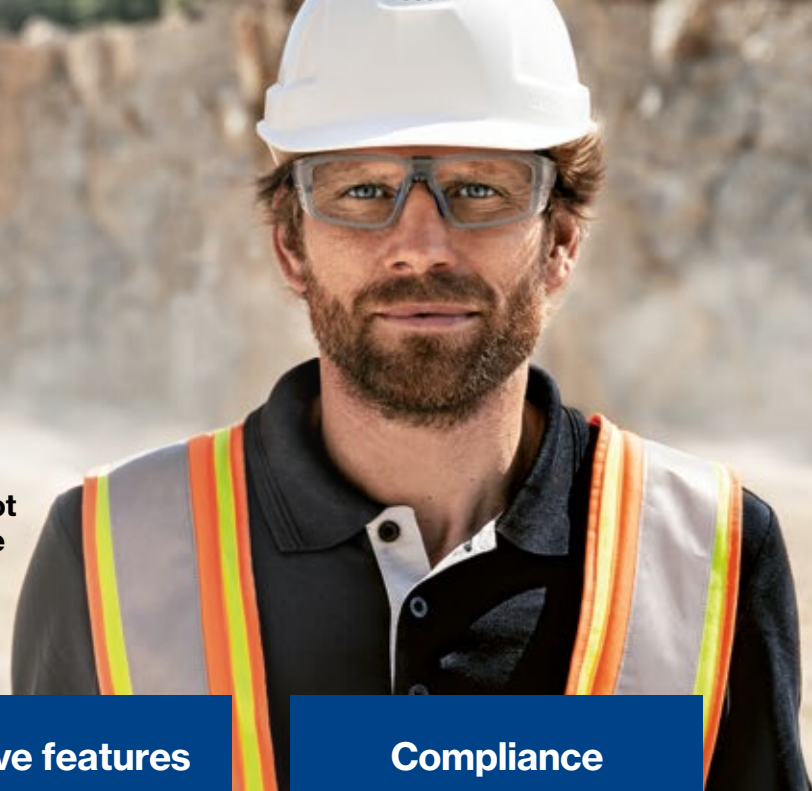


*Source: Revealed: The growing crisis of workplace-related eye injuries | Eye News

**UK workplace eye health neglected, new survey finds uvex provides both safety prescription glasses and Visual Display Unit (VDU) glasses.

Are you protected?

Standard high street prescription glasses are not suitable as safety glasses because they lack the necessary impact resistance and coverage. This shortfall is due to differences in both lens material and frame design:



Lens material



Most high street glasses use CR39 plastic lenses, offering good clarity but limited impact resistance. Safety eyewear typically uses polycarbonate lenses, which are more impact-resistant and shatterproof.

Protective features



Safety prescription glasses are built with side shields, wraparound frames, and additional coverage from multiple angles to protect against hazards like splashes, dust, flying debris, gas, vapour, and radiation.

Compliance



Safety eyewear must meet standards such as EN 166 or EN ISO 16321-1, certifying them for use in industrial and hazardous environments. **High street glasses are not tested to these standards.**

Safety prescription glasses

Built for protection. Tailored for you.

- ✓ **Impact-resistant** lenses to shield against flying debris and hazardous materials
- ✓ **Durable frames** for industrial settings
- ✓ **Compliant** with UK safety standards (EN 166 and EN ISO 12312-1)
- ✓ **Comfort-fit designs** for extended wear
- ✓ **Anti-reflective coatings** to reduce glare and eye strain
- ✓ **Prescription options** to suit individual vision needs.

“Eye injuries cost the UK economy an estimated **£25 billion** annually”

[source: eyenews.uk.com]

VDU glasses

Support for your eyes during screen time.

- ✓ **Lightweight frames** for comfort during long hours
- ✓ **Custom prescriptions** for optimal screen viewing
- ✓ **Anti-reflective coatings** to reduce glare and eye strain.

“65% of office workers suffer from digital eye strain symptoms**”

**UK nationwide survey commissioned by NuVision Biotherapies and conducted by Leadership Factor Research

Impact protection starts with choosing the appropriate lens material



Why CR39 is suitable for everyday eyewear and low risk settings

Outstanding optical clarity

CR39 delivers superior visual quality, making it a popular choice for high street eyewear and prescriptions that require precision.

Lightweight comfort

Its organic composition ensures a light, comfortable fit for all-day wear, ideal for office work or VDU users.

Cost-effective and versatile

CR39 offers excellent value without compromising on quality, making it a go-to material for non-industrial environments. If you require impact protection of a minimum of 45 m/s CR39 will not be a suitable solution.

! Some lenses may show an “S” marking under EN 166, indicating only a basic drop-ball test. This test is removed under the updated EN ISO 16321-1 standard.

Why choose polycarbonate lenses for safety prescription eyewear?

Exceptional impact protection

Polycarbonate is an advanced organic material with outstanding breaking strength, delivering superior impact resistance to keep eyes safe in demanding environments.

Lightweight and comfortable

Up to 25% thinner and lighter than traditional plastic or glass lenses, reducing weight for all-day comfort without compromising durability.

Enhanced durability

When paired with a scratch-resistant coating, polycarbonate lenses maintain clarity and longevity, even in tough working conditions.

Compliance and future-ready

Meets current EN 166 safety standards and aligns with the EN ISO 16321-1 update (November 2025), ensuring your eyewear remains compliant and future-proof.

Transition from EN 166 to EN ISO 16321-1

Safety eyewear markings are evolving. Impact strength is still assessed under EN 166, but the updated EN ISO 16321-1 standard is now in effect. This new standard introduces changes to impact speed thresholds, letter designations, and coverage requirements.

What does this mean for you?

- ✓ **EN 166-certified products remain valid until their certificate expires, up to a maximum of five years.**
- ✓ **Any products certified or recertified to EN 166 by 11 November 2025 can continue to be sold legally until 11 November 2030.**
- ✓ **Prescription safety glasses and goggles will still display their tested impact resistance markings.**

For more information about the new standard including impact tests and orbital protection zones visit www.uvex-safety.co.uk/en-iso-16321-1-2022

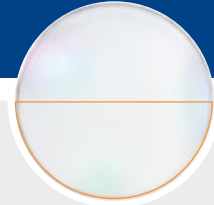
Find your perfect lens type

Choosing the right lens makes all the difference to comfort, clarity, productivity and wellbeing. uvex offers solutions for all needs, including single vision, bifocal, varifocal, and specialised VDU lenses.



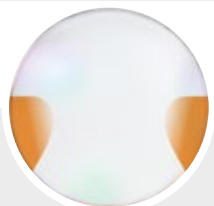
Single vision lenses

- ✓ Provide a consistent prescription across the lens. Suitable for distance or near vision.
- ✓ Are ideal for first-time prescription eyewear users.
- ✓ Offer clear and sharp focus.
- ✓ Are suitable for reading or general tasks.



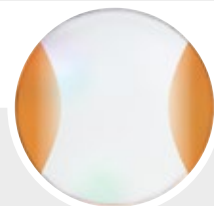
Bifocal lenses

- ✓ Combine two prescriptions in one lens – distance at the top, near vision at the bottom.
- ✓ Allow seamless switching between tasks requiring different focal lengths.
- ✓ This means there is no need to change glasses between activities.
- ✓ Are practical for industrial and office.



Varifocal (progressive) lenses

- ✓ Offer a smooth transition between distance, intermediate, and near vision zones without visible lines.
- ✓ Are suitable for those needing an all-in-one solution for various vision needs.
- ✓ Provide uninterrupted clarity at every distance, especially in dynamic work settings.



Occupational (VDU) lenses

- ✓ Designed for screen work, offering a wide intermediate zone for computer use and a comfortable near zone for reading.
- ✓ Reduce eye strain from extended screen use.
- ✓ Enhance posture and ergonomic comfort.
- ✓ Boost productivity for those working long hours at a VDU.

Which progressive lens is right for you?

Progressive lenses (also called varifocals) provide a seamless transition between near, intermediate, and distance vision – without any visible lines like bifocals.

GOOD

Quadro Progressive Lens ★

Affordable, precise and comfortable.

- ✓ Wide fields of vision for everyday tasks.
- ✓ Smooth reading transition through presbyopia stages (near, intermediate, and distance).
- ✓ Comfortable reading zone for quick adaptation.
- ✓ Digital surfacing technology for sharper vision and personalised fit.
- ✓ Custom fit based on eye curvature, frame shape, and prescription.
- ✓ Improved peripheral vision with reduced distortion.

Ideal for: Cost-conscious users who want advanced technology and reliable comfort.

BETTER

Varilux® Comfort Max ★★

Enhanced comfort and flexibility.

- ✓ Sharp vision at all distances (near, intermediate, and distance).
- ✓ Wider reading and peripheral zones for less distortion.
- ✓ Improved posture flexibility for all-day comfort.
- ✓ Extra visual sharpness and contrast for detail clarity.
- ✓ Easy adaptation for new varifocal wearers.

Ideal for: Users seeking superior comfort and wider vision zones for daily activities.

BEST

Varilux® Physio® Extensee™ ★★★

Premium personalisation for ultimate clarity.

- ✓ High visual quality in all light conditions.
- ✓ Extra visual sharpness and contrast - even in low light.
- ✓ Wide field of vision with seamless transitions through presbyopia stages (near, intermediate, and distance).
- ✓ Tailored to your eye anatomy, posture and visual behaviour making long tasks more comfortable.
- ✓ High quality of vision and comfort for near vision tasks.

Ideal for: Users who demand the highest level of clarity, comfort and customisation.

Feature	Good ★	Better ★★	Best ★★★
Wide fields of vision	✓	✓	✓
Comfortable reading zone	✓	✓	✓
Digital surfacing precision	✓	✓	✓
Wider reading and peripheral zones		✓	✓
Improved posture flexibility		✓	✓
Extra sharpness and contrast		✓	✓
Low-light visual performance			✓
Tailored to eye anatomy and posture			✓
Premium customisation			✓

Tip for managers:

Choose based on task demands, budget, and wearer comfort needs.

For high-precision work or extended near-vision tasks, Best is recommended.

Lens coatings and their benefits

uvex provides three advanced coatings to enhance your prescription eyewear:

- ✓ Hard scratch-resistant coating - comes as standard
- ✓ Optional extras that come with a charge:
 - Hard anti-reflective coating
 - Optifog: anti-fog coating

Hard scratch-resistant coating – built to last

All uvex prescription eyewear is equipped with a durable, scratch-resistant coating as a standard feature.

Daily use exposes lenses to dust, cleaning cloths, and hard surfaces, which can cause scratches. Even minor abrasions reduce clarity and increase eye strain.

The scratch-resistant coating provides a robust protective layer, helping to preserve lens transparency and maintain its appearance over time.

Benefits to the wearer:

- ✓ **Longer lens life:** reducing the frequency of replacements.
- ✓ **Consistent optical clarity:** minimising visual interference from scratches.
- ✓ **Better value:** protects your investment in high-quality eyewear.



Anti-reflective coating – clear vision, no distractions

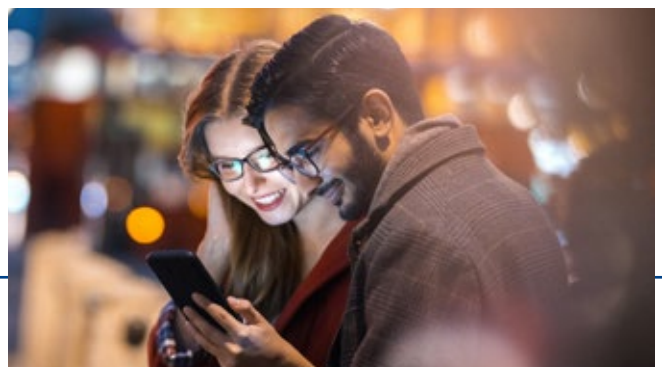
Over 80% of spectacle wearers experience reflections indoors and outdoors, reducing clarity and causing eye fatigue. To prevent this, multiple metal oxide layers are applied to both lens surfaces, minimising reflections and improving comfort.

Why upgrade to anti-reflective lenses?

This coating is especially beneficial for individuals working with visual display units (VDUs), as it enhances visual performance and alleviates eye.

Benefits to the wearer:

- ✓ **Better visual clarity:** sharper, more accurate vision.
- ✓ **Improved contrast:** colours and details appear more defined.
- ✓ **Better visual comfort:** less glare and distraction.
- ✓ **Reduced eye strain:** especially during long screen use or reading.
- ✓ **Reduced glare at night:** clearer vision in poorly lit environments and when driving.





OPTiFOG®

The long-lasting anti-fog solution

The Optifog system uses two advanced technologies that help keep your lenses fog-free, even in challenging conditions.

How does Optifog work?

Optifog lens treatment

- ✓ A unique anti-fog layer is applied to both the front and back of the lens.
- ✓ This treatment not only repels fog, it also offers protection against scratches and reflections for lasting visual comfort.

Optifog cloth

- ✓ The specially engineered cloth contains anti-fog molecules that activate the lens treatment.
- ✓ Wiping your lenses with this cloth distributes moisture evenly, forming an invisible, fog-resistant layer.
- ✓ The cloth also serves as a daily maintenance tool to keep your lenses in good condition.

Who can benefit?

- ✓ **At work:** Professionals moving between hot and cold environments or wearing masks and helmets, such as healthcare workers, cooks, delivery drivers, and construction workers.
- ✓ **During leisure:** Runners, cyclists, hikers, skiers, and anyone active outdoors.
- ✓ **In daily life:** Anyone wearing a mask or facing fog issues when cooking, drinking hot beverages, or moving between temperature changes.



Additional benefits:



- ✓ **Fog resistance:** fog-free, clear vision in demanding conditions.



- ✓ **Scratch resistant coating:** durable lenses to maintain clear vision.



- ✓ **UV protection:** shields from UVA and UVB rays to 385 nm.



- ✓ **Reduced glare:** fewer reflections for better clarity and aesthetics.



- ✓ **Dust repellence:** keeps lenses cleaner for longer.

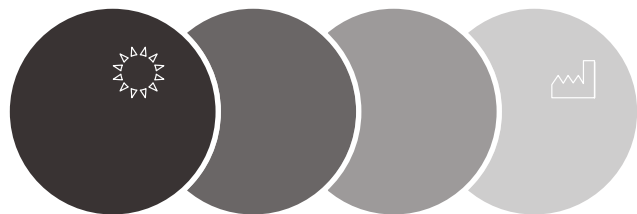


What's the difference between a tint and a photochromic lens?

Lens performance can vary under different lighting conditions. Understanding the differences helps you choose the right solution for your environment and tasks.

Tinted lenses

Tinted lenses feature a fixed colour and shade that provide reliable glare reduction in environments with intense light, such as bright sunlight or reflective surfaces.



Tint levels from dark to light: LTF 15%, LTF 25%, LTF 38%, LTF 82%*

- ✓ Maintain a consistent level of shading or colour, regardless of changing light conditions.
- ✓ Ideal for reducing glare and enhancing contrast in specific settings (commonly grey or brown tints).
- ✓ Do not adapt when moving between indoor and outdoor environments.
- ✓ Available in brown and grey, with tint levels offered by uvex.

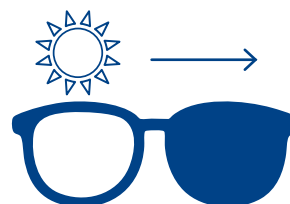
Photochromic lenses

Photochromic lenses automatically adjust to changing light levels. Often referred to as brand names ReactaLight or Transitions®, these lenses darken when exposed to UV light and return to a clear or lighter state indoors.

- ✓ React to UV light, darkening outdoors and clearing indoors
- ✓ Provide adaptive protection in varying light conditions
- ✓ Available from uvex with tinting between approximately 8% and 80%, in colour brown and polycarbonate lens material only

Why choose Transitions® lenses

- ✓ **Convenience:** one pair for indoor and outdoor use
- ✓ **Comfort:** reduces glare and eye strain
- ✓ **Protection:** blocks 100% UVA and UVB rays



*LTF - light transition factor a measurement indicating how much light passes through the tinted lens.

Transitions® Gen[®]S™



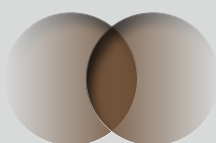
uvex offers Transitions® Generation S lenses for both safety and VDU frames, engineered to adapt quickly to changing light levels for maximum comfort and protection.

What are Transitions® lenses?

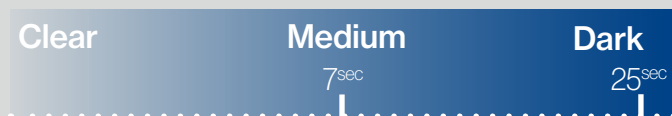
Transitions lenses automatically adjust their tint according to the light. Indoors, they remain clear; outdoors, they darken to protect against bright sunlight. This eliminates the need for separate sunglasses - one pair does both jobs.



How fast do they change?



From light to dark:



- ✓ Begins to darken in 2 seconds
- ✓ Medium tint in 7 seconds
- ✓ Fully dark (sun lens level) in 25 seconds

From dark to light



- ✓ Back to medium tint in 7 seconds
- ✓ Almost clear in under 45 seconds
- ✓ Fully clear in about 2 minutes



Effortless vision



Fully clear indoors



Blocks 100% UVA and UVB rays



Darkens in seconds



Fast activation and fadeback

New standard for safety eyewear EN ISO 16321

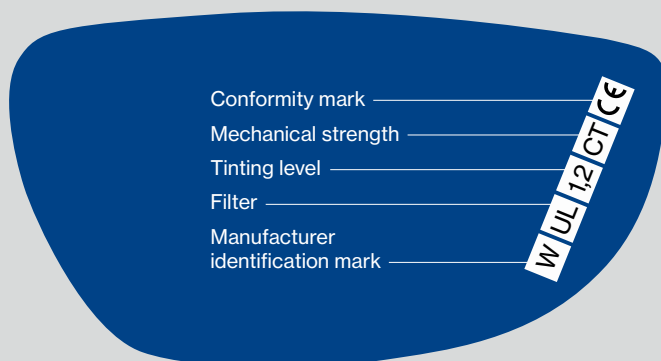
EN ISO 16321 – understanding the new standard and what it means for prescription safety spectacles

For more than 20 years, the EN 166 standard has defined all of the requirements and standards for safety eyewear within the European Union and the United Kingdom. EN 166 is now being replaced by EN ISO 16321. The new standard contains a range of international standards that will entail some significant changes to product requirements and test methods. **As a result, new certificates will be required for all prescription safety spectacles in accordance with EN ISO 16321. Existing EN 166 certificates will remain valid until their stated expiry date, after which replacement certificates must be issued under the EN ISO 16321 standard.**

The most important changes at a glance:

- ✓ New test heads and coverage areas have been defined, and certification of different head sizes (S, M, L) is now also permitted.
- ✓ EN ISO 16321 includes EN ISO 16321-1 (general requirements; optical clarity, frame integrity, UV, sunglare and IR filters), EN ISO 16321-2 (welding protection filters).
- ✓ The certification of all prescription safety spectacles (frames/lenses) will be updated. Revised impact speed categories and markings have also been introduced. These updated impact thresholds are detailed opposite.

Markings on lenses in accordance with EN ISO 16321



Mechanical strength	
None	Drop ball test in accordance with EN ISO 16321 (basic requirement)
C	Low-energy impact (45 m/s or 162 km/h)
D	Medium-energy impact (80 m/s or 288 km/h)
T*	Tested under extreme temperatures (-5°C/+55°C)

Filter	
U	UV protection filter
UL	UV protection filter with colour recognition
G	Sunglare filter (variomatic)

Tinting level Marking	Light transmittance	Tints
UL1.2	74.4–100%	Clear
G1–3		Self-tinting (variomatic)



If protection is needed against high-speed particles at extreme temperatures (-5°C to $+55^{\circ}\text{C}$), safety eyewear must carry the letter 'T' following the mechanical strength rating (e.g. CT or DT). This marking confirms that the product has been tested for such conditions. If the 'T' marking is absent, the eyewear is only suitable for high-speed particle protection at normal ambient temperatures.

Additionally, if the **lens and frame carry different mechanical strength ratings** (such as C or D), the **lower rating applies to the entire eyewear**. This ensures that the weakest component does not compromise overall protection.

Markings on frames in accordance with EN ISO 16321



16321 W 34 CT 1-M C E MM/JJJJ

- Production date
- Conformity mark
- Head size
- Mechanical strength
- Additional marking
- Manufacturer identification mark
- Standard

Additional markings*

3	Protection against liquids (drops and splashes)
4	Protection against large dust particles with a grain size of $> 5\text{ }\mu\text{m}$

Mechanical strength

None	Drop ball test in accordance with EN ISO 16321 (basic requirement)
C	Low-energy impact (45 m/s or 162 km/h)
D	Medium-energy impact (80 m/s or 288 km/h)
T*	Tested under extreme temperatures ($-5^{\circ}\text{C}/+55^{\circ}\text{C}$)

Head sizes

1-S	Small, European test head
1-M	Medium, European test head (standard)
1-L	Large, European test head
2-S	Small, Asian test head
2-M	Medium, Asian test head
2-L	Large, Asian test head

Where no head size is stated, the head form will be Medium.

Certifications and markings in accordance with EN 166

Individually manufactured uvex prescription safety spectacles are tested and certified by independent testing institutes at regular intervals according to the requirements of the current standard.

Frame and lenses are permanently marked and if the markings on the lens and frame are different, the lower mechanical strength applies to the entire eye protection device. According to the PPE regulation, uvex prescription safety spectacles must be marked with the factory symbol and production date.



Markings on lenses in accordance with EN 166

Markings on frames in accordance with EN 166

Conformity mark _____
Mechanical strength _____
Optical quality _____
Manufacturer identification mark _____
Tinting level _____
Filter _____

2C-12 W1 FT CE

W 166 34 FT CE MM/JJJJ

Production date
Conformity mark
Mechanical strength
Additional marking
EN standard
Manufacturer identification mark

Mechanical strength	
S	Increased strength - drop ball test
F	Low-energy impact (45 m/s or 162 km/h)
B	Medium-energy impact (120 m/s or 432 km/h)
T*	Tested under extreme temperatures (-5°C/+55°C)

Filter Marking	Light transmittance	Tint
1.2	74.4-100%	Clear
1.1 < 3.1		Self-tinting (variomatic)

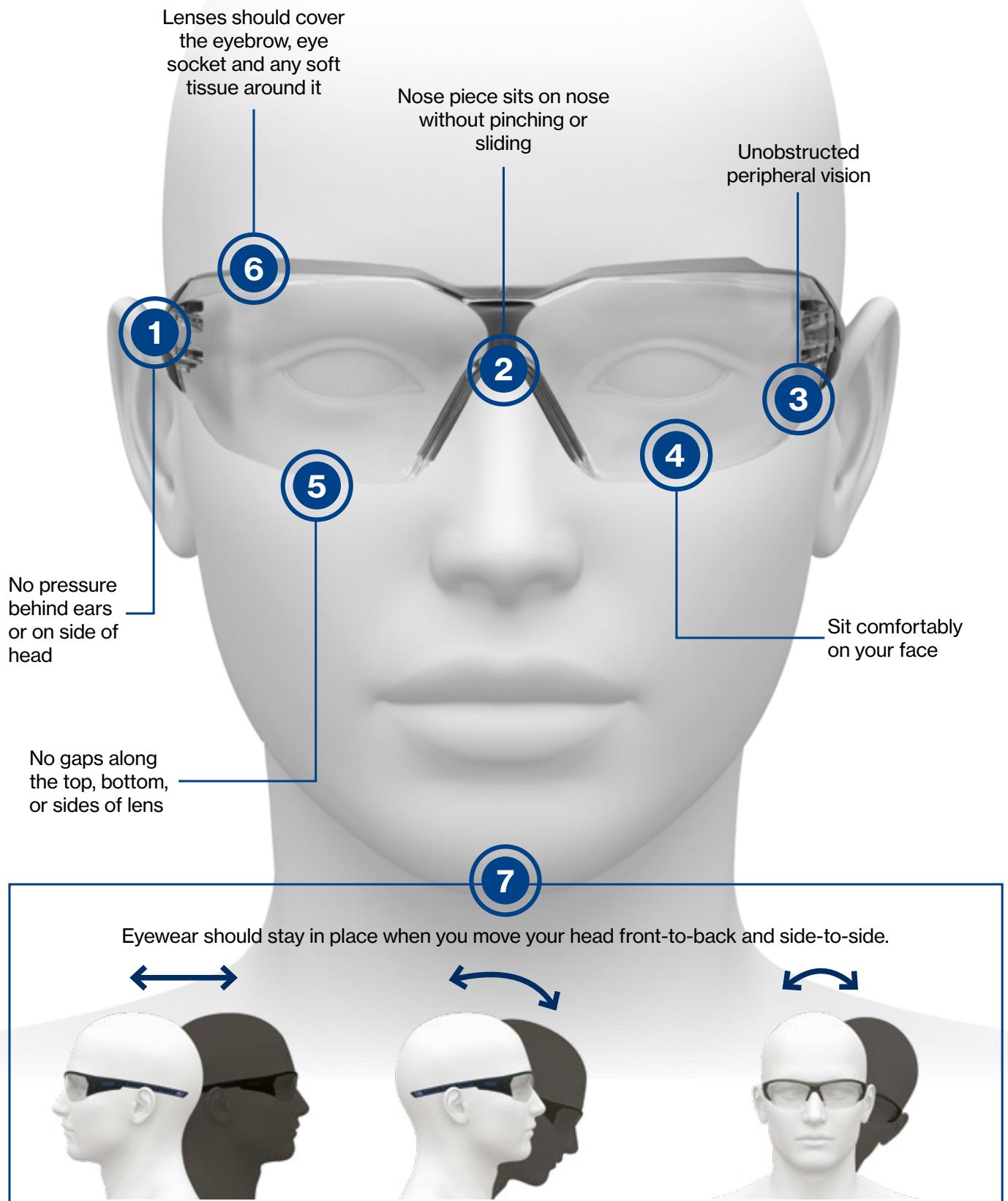
Filter	
2	UV protection filter (EN 170)
2C	UV protection filter with colour recognition (EN 170)
5	Sunglare filter for industrial use (EN 172)

Mechanical strength	
S	Increased strength - drop ball test
F	Low-energy impact (45 m/s or 162 km/h)
B	Medium-energy impact (120 m/s or 432 km/h)
T*	Tested under extreme temperatures (-5°C/+55°C)

Additional markings*	
None	General use
3	Protection against liquids (drops and splashes)
4	Protection against large dust particles with a grain size of > 5 µm

* optional

How safety eyewear should fit for maximum comfort and protection



Information for wearers

Together with your manager or health and safety representative, you have confirmed that either safety prescription eyewear or standard prescription eyewear is necessary for your wellbeing at work. If safety prescription eyewear is required, refer to page 6 for details on why everyday high-street glasses are unsuitable for industrial environments. Having safety prescription glasses for work ensures your own prescription glasses remain in good condition for private use while providing the necessary protection for your eyesight in the workplace.



The process

Step 1.

After consulting with your authorising officer, ensure you have a copy of the order form before visiting the optician.



Step 3.

At the optician's, you will either have an eye examination or provide a recent prescription.



Step 5.

The frames available for selection will be pre-chosen based on your company's hazards, risk assessment or budget.



Step 7.

Production typically takes up to 7 to 10 working days. When your glasses are ready, you will return for a dispensing appointment, during which the optician will:

- ✓ Check the glasses/lenses meet your specifications
- ✓ Adjust them for comfort and fit
- ✓ Provide care and maintenance instructions
- ✓ Answer any questions you may have

Step 2.

Confirm with your authorising officer which opticians are approved for you to visit. You should make an appointment with the optician before you visit.



Step 4.

Choose a frame that fits your facial features and size, ensuring minimal gaps for comfort, protection and appearance.



Step 6.

Once your frame is selected, the optician will coordinate with uvex to manufacture your glasses.



Frequently asked questions:

How do I get my spectacles?

Go to your authorising officer or line manager, who will generate an online order via the portal. Take this form to your approved optician, who will carry out an eye test if required, or you can provide a prescription from within the last two years. The optician will then place the order for your spectacles.

Which optician do I go to?

Your company may assign a specific optician, which will be listed on the form under "Optician Name". Please check with your authorising officer if you are unsure. If no designated optician is specified, you can use the uvex optician locator at www.uvex-safety.ie/en/buy/optician-locator/ to find an approved optician local to you.

How do I choose a frame?

Your company may have specified certain frame options. These will be listed on the form under "pre-approved frames".

What happens if the frame isn't at the opticians to try on?

If your nominated optician does not have the required frame in store, uvex can arrange for a sample frame to be delivered to them for fitting purposes.

What if I have recently had an eye test?

You can take this prescription to the optician along with the uvex form. The optician will complete the form with your details and order the new spectacles as normal. Please note that an eye test is valid for two years.

Do I have to pay for my eye test and claim it back from my company?

If your company covers the cost of your eye test, uvex can arrange payment to the optician on your behalf and then invoice your company. This ensures no payment is required at the optician.



Information for Authorising officers



Prescription ordering system

Your company has decided to use uvex for its prescription eyewear.

uvex has streamlined the ordering process for safety prescription eyewear through its dedicated online platform. The intuitive system displays pre-approved frame and lens options, supports straightforward order placement, and enables employees to arrange eye examinations with the chosen optician.

The digital platform is suitable for organisations of all sizes, including those operating across multiple locations. Each person responsible for managing prescription eyewear, including authorising officers, can maintain an individual account with secure password protection.

What are the benefits?

- ✓ Suitable for organisations of any size.
- ✓ The spectacles are produced by uvex, helping to reduce costs and speed up delivery.
- ✓ No prepaid vouchers required. Each frame is invoiced individually through your existing uvex distribution partner, removing the need to open a new account or manage voucher purchases.
- ✓ Lead times may be shorter, particularly when working with opticians who also use the portal.
- ✓ Reduced administration. Orders are stored in a secure, central database that you can access at any time for convenient tracking and traceability.
- ✓ uvex also offers personalised training to ensure authorising officers are comfortable with the portal.

Step 1.

The system is preconfigured with lens and frame selections agreed during the meeting with your uvex PPE Solutions Specialist.



Step 3.

Orders can be submitted quickly and efficiently through a streamlined process.



Step 5.

User reports can be generated to support tracking and monitoring, or to serve as documentation for H&S or ISO 9001 compliance.



How to order online

Step 2.

A secure login and password will be emailed to you, providing immediate access to place orders.



Step 4.

Order statuses are available at any time, allowing you to track progress with ease.



Process for employees

Once you create an order in the system, you have two options:

1. Print the form and give it to the employee to take to their optician.
2. Email the form to an off-site employee, who can print it and take it to their appointment.

The employee then visits the optician for a sight test and/or to choose a frame. If the optician does not have the required frames in stock, they can request a sample from uvex, which will be shipped to them. This typically takes a few days.

After collecting all necessary details, the optician enters the information into their version of the portal and submits it directly to uvex.

uvex then manufactures the spectacles and sends them back to the optician for dispensing. The optician will call the employee directly to arrange collection and final fitting.



Frequently asked questions:

How does my company's preferred optician access the portal?

The opticians' portal is a free optional service that any optician can register for quickly. We work closely with opticians to help them use the system, providing a more efficient and streamlined ordering process.

What is the benefit of a designated optician?

uvex will provide your designated optician with the appropriate frames, as agreed with your uvex PPE Solutions Specialist. This enables employees to try on frames for style and fit. Each frame must be measured on the individual's face to ensure ocular precision and accurate lens positioning.

How can my company set up a designated optician?

In many cases, the company Safety Officer or Occupational Health Nurse will arrange appointments with a local optician. If this is not in place, uvex provides an optician locator on its website to help you find approved opticians near you or your business. www.uvex-safety.ie/en/buy/optician-locator/

Prescription safety spectacles

uvex RX bc metal frames



Coming soon

uvex RX bc
5114



- ✓ Metal frame in a timeless design
- ✓ Transparent side shields
- ✓ Anatomically adjustable nose pads and ear-pieces ensure an exceptional fit

uvex code:	Frame colour:	Lens diameter	Bridge width	Frame markings
6109121	Anthracite	51 mm	20 mm	W U1,2 G0 CT 1-S/1-M CE

Coming soon

uvex RX bc
5113



- ✓ Classic, square metal frame
- ✓ Striking side arm design
- ✓ Transparent side shields
- ✓ Anatomically adjustable nose pads and ear-pieces ensure an exceptional fit

uvex code:	Frame colour:	Lens diameter	Bridge width	Frame markings
6109119	Dark blue	54 mm	19 mm	W U1,2 G0 CT 1-S/1-M CE
6109120	Anthracite	56 mm	19 mm	W U1,2 G0 CT 1-M/1-L CE

Coming
soon

uvex RX bc
5112



- ✓ Metal frame with double bridge
- ✓ Striking side arm design
- ✓ Transparent side shields
- ✓ Anatomically adjustable nose pads and ear-pieces ensure an exceptional fit

uvex code:	Frame colour:	Lens diameter	Bridge width	Frame markings
6109117	Dark green	53 mm	17 mm	W U1,2 G0 CT 1-S/1-M CE
6109118	Dark brown	55 mm	17 mm	W U1,2 G0 CT 1-M/1-L CE

uvex RX bc
5111



- ✓ Large metal frame in a retro design featuring a double bridge
- ✓ Transparent side shields
- ✓ Anatomically adjustable nose pads and ear-pieces ensure an exceptional fit

uvex code:	Frame colour:	Lens diameter	Bridge width	Frame markings
6109116	Silver	57 mm	19 mm	W 166 FT CE

uvex RX bc
5110



- ✓ Classic, square metal frame
- ✓ Transparent side shields
- ✓ Anatomically adjustable nose pads and ear-pieces ensure an exceptional fit

uvex code:	Frame colour:	Lens diameter	Bridge width	Frame markings
6109115	Grey, translucent	55 mm	17 mm	W 166 FT CE

uvex RX bc
5109



- ✓ Modern, rounded metal frame
- ✓ Transparent side shields
- ✓ Anatomically adjustable nose pads and ear-pieces ensure an exceptional fit
- ✓ Designed for smaller facial features

uvex code:	Frame colour:	Lens diameter	Bridge width	Frame markings
6109114	Gold	50 mm	19 mm	W 166 FT CE

uvex RX bc
5108



- ✓ Slim, expressive metal frame
- ✓ Transparent side shields
- ✓ Anatomically adjustable nose bridge and earpieces ensure an exceptional fit

uvex code:	Frame colour:	Lens diameter	Bridge width	Frame markings
6109113	Steel blue	56 mm	19 mm	W 166 FT CE

uvex RX bc
5102



- ✓ Fashionable, aviator-style metal frame
- ✓ Transparent side shields
- ✓ Anatomically adjustable nose bridge and earpieces ensure an exceptional fit

uvex code:	Frame colour:	Lens diameter	Bridge width	Frame markings
6109101	Gunmetal, matt	53 mm	20 mm	W 166 FT CE

Did you know

Prescription eyewear is often referred to as RX.

RX comes from the Latin word recipe, meaning “take” or “take thou”. Early physicians wrote recipe at the top of a prescription to instruct the apothecary to take certain ingredients and prepare the medicine.

Over time, the word was shortened to an R with a line through it, which evolved into the symbol we now write as RX.



Prescription safety spectacles

uvex RX bc plastic frames



Coming
soon

uvex RX bc

5527



- ✓ Plastic frame in a retro design
- ✓ Transparent frame with accent colour for an unrestricted field of vision
- ✓ Good fit thanks to anatomically shaped nose area
- ✓ Completely metal-free
- ✓ Visit uvex-safety.ie for CO₂ footprint calculation



uvex code:	Frame colour:	Lens diameter	Bridge width	Frame markings
6109262	Aubergine	53 mm	18 mm	W U1,2 G0 C 1-S/1-M CE
6109263	Graphite	53 mm	18 mm	W U1,2 G0 C 1-M/1-L CE
6109264	Grey	57 mm	18 mm	W U1,2 G0 C 1-S/1-M CE
6109265	Graphite	57 mm	18 mm	W U1,2 G0 C 1-M/1-L CE

Coming
soon

uvex RX bc
5523



- ✓ Round plastic frame with metal arms
- ✓ Transparent side shields
- ✓ Good fit with anatomically shaped nose bridge and easily adjustable earpieces

uvex code:	Frame colour:	Lens diameter	Bridge width	Frame markings
6109252	Grey, translucent	49 mm	20 mm	W U1,2 G0 CT 1-S/1-M CE
6109253	Green, grey	49 mm	20 mm	W U1,2 G0 CT 1-M/1-L CE

While
stocks last

uvex RX bc
5506



- ✓ Comfortable plastic frame
- ✓ Side shields and integrated brow guard frame design
- ✓ Good fit with anatomically shaped nose bridge

uvex code:	Frame colour:	Lens diameter	Bridge width	Frame markings
6109210	Light grey	56 mm	18 mm	W 166 F CE

uvex RX bc
5502



- ✓ Close-fitting plastic frames
- ✓ Side shields and integrated brow guard frame design
- ✓ Specially shaped frames provide protection against particles from below
- ✓ Good fit with anatomically shaped nose bridge
- ✓ Individually adjustable side arms with four different lengths and adjustable soft-form comfort ear pieces

uvex code:	Frame colour:	Lens diameter	Bridge width	Frame markings
6108215	Grey	56 mm	15 mm	W 166 F CE

Prescription safety spectacles

uvex RX cd frames



uvex RX cd
5521
planet



- ✓ Stylish plastic frame with reflective uvex logo
- ✓ Transparent lens frame for an unrestricted field of view
- ✓ Anatomically shaped nose bridge
- ✓ Sporty arms made from a combination of soft and hard components to ensure increased comfort and non-slip fit
- ✓ The hard components of the frame consist of 38% bio-based plastic
- ✓ Visit uvex-safety.ie for CO₂ footprint calculation



uvex code:	Frame colour:	Lens diameter	Bridge width	Frame markings
6109257	Anthracite, jade	54 mm	22 mm	W 166 F CE

uvex RX cd
5521



- ✓ Stylish plastic frame with reflective uvex logo
- ✓ Transparent lens frame for an unrestricted field of view
- ✓ Anatomically shaped nose bridge
- ✓ Sporty arms made from a combination of soft and hard components to ensure increased comfort and non-slip fit

uvex code:	Frame colour:	Lens diameter	Bridge width	Frame markings
6109249	Silver, anthracite	54 mm	22 mm	W 166 F CE

uvex RX cd

5525 and 5526



Coming soon

uvex RX cd
5525

uvex RX cd
5526



- ✓ Plastic frame in a sporty design
- ✓ Transparent lens carrier for an unrestricted field of vision
- ✓ Good fit thanks to anatomically shaped nose area
- ✓ Ear-pieces with hard and soft components ensure a non-slip fit
- ✓ Completely **metal-free**
- ✓ Visit uvex-safety.ie for CO₂ footprint calculation



- ✓ Plastic frame in a sporty design
- ✓ Translucent lens carrier for an unrestricted field of vision
- ✓ Good fit thanks to anatomically shaped nose area
- ✓ Soft, easily adjustable ear-pieces with **metal core**
- ✓ Visit uvex-safety.ie for CO₂ footprint calculation



uvex code:	Frame colour:	Lens diameter	Bridge width	Frame markings
6109258	Black, grey	53 mm	22 mm	W U1.2 G0 C 1-M CE
6109259	Black, dark blue	53 mm	22 mm	W U1.2 G0 C 1-M CE

uvex code:	Frame colour:	Lens diameter	Bridge width	Frame markings
6109260	Black, grey	54 mm	18 mm	W 166 F CE
6109261	Anthracite, red	54 mm	18 mm	W 166 F CE

uvex RX cd 5524



- ✓ Modern, close-fitting plastic frame
- ✓ Translucent frame colour for an unobstructed field of vision
- ✓ Frame design with integrated side shields and upper eye coverage
- ✓ Soft, adjustable nose bridge
- ✓ Easily adjustable soft-form comfort ear-pieces
- ✓ Visit uvex-safety.ie for CO₂ footprint calculation



uvex code:	Frame colour:	Lens diameter	Bridge width	Frame markings
6109254	Anthracite	53 mm	16 mm	W 166 F CE
6109255	Anthracite	57 mm	16 mm	W 166 F CE

uvex RX cd 5514



- ✓ Close-fitting plastic frame
- ✓ Transparent side shields and integrated brow guard frame design
- ✓ Soft, adjustable nose bridge
- ✓ Easily adjustable soft-form comfort ear pieces

uvex code:	Frame colour:	Lens diameter	Bridge width	Frame markings
6109225	Black, blue	53 mm	18 mm	W 166 F CE
6109226	Black, red	55 mm	18 mm	W 166 F CE

While
stocks last

uvex RX bc 5505



- ✓ Close-fitting plastic frames
- ✓ Integrated side shields and brow guard
- ✓ Good fit with anatomically shaped nose bridge
- ✓ Individually adjustable side arm length and angle for a customised fit and adjustable soft-form comfort ear pieces
- ✓ Foam seal for use when working with dust, chips or fluids
- ✓ Complies with EN 166 "Protection against liquid droplets and splashes" (category "3")

uvex code:	Frame colour:	Lens diameter	Bridge width	Frame markings
6109208	Transparent	55 mm	19 mm	W 166 F CE
6109209	Transparent	57 mm	19 mm	W 166 F CE

Perfect fit

Many frames can be anatomically adapted to different head shapes to ensure a perfect fit, e.g. for



high
cheek bones



flat
nose bridge



wide
temples

Our RX cd collections meet the standard requirements for the field of view and coverage for both the European test head and the Asian test head.





uvex RX cd

5528 and 5528 tight-fit

Coming Soon

- ✓ Plastic frame in a sporty design with stylish colour gradient
- ✓ Translucent side protection for an unrestricted field of vision
- ✓ Air vents at the top help maintain comfort in the eye area
- ✓ Soft, adjustable nose bridge
- ✓ Sporty side arms made from a combination of soft and hard components to ensure increased comfort and non-slip fit
- ✓ Soft, adjustable ear-pieces with metal core
- ✓ Tight-fit-kit consisting of seal and headband
- ✓ Headband can be fitted straight onto the side arms



Individually adjustable




Non-slip, pressure-free fit




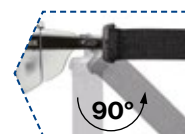
Large lens height



Unrestricted field of vision

 CO₂ footprint:
0.43 kg CO₂e 07/2025
(6109266, 6109267),

 Bio-based content (6109266, 6109267): Hard components of the frame consist of 31% bio-based plastic (biogenic origin: castor oil plant), certified in accordance with EN ISO 16321



Headband

Fitted quickly – for a firm, secure fit



Seal

Simply clip into the air vents of the frame



uvex RX cd 5528 with tight-fit-kit

6109266 + 6118018

Coming soon

uvex RX cd
5528



uvex RX cd 5528
tight-fit-kit

uvex code:	Frame colour:	Lens diameter	Bridge width	Frame markings	Compatible with ►	uvex code:	Kit colour:	Frame markings
6109266	Translucent, black	53 mm	18 mm	16321 W U2,5 G2 C 1-M CE		6118018	Black	16321 W U2,5 G2 C 1-M CE
6109267		56 mm	18 mm	16321 W U2,5 G2 1-M/1-L CE		6118019	Black	16321 W U2,5 G2 1-M/1-L CE



uvex RX cd

5522 and 5522 tight-fit-kit

- ✓ Modern plastic frame in a robust design
- ✓ Translucent frame colour for an unobstructed field of vision
- ✓ Air vents at the top and side
- ✓ Soft, adjustable nose bridge
- ✓ Sporty arms made from a combination of soft and hard components to ensure increased comfort and non-slip fit
- ✓ Soft, adjustable ear-pieces with metal core
- ✓ Tight-fit-kit consisting of seal and headband
- ✓ Seal provides protection against liquids (droplets) – marking 3, in accordance with EN 166
- ✓ Headband can be fitted straight onto the side arms



Side arm design
with hard and soft
components



Side arms
with metal cores
for an optimal fit

Soft, adjustable
nose bridge



Headband
Fitted quickly – for a
firm, secure fit



Seal

Simply clip into the upper and side air vents of the frame to close them and fix the seal



**uvex RX cd 5522 with
tight-fit-kit**

6109250 + 6118012

uvex RX cd
5522



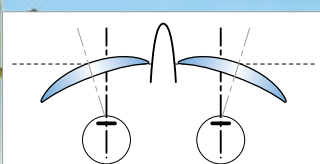
uvex RX cd 5522
tight-fit-kit

uvex code:	Frame colour:	Lens diameter	Bridge width	Frame markings	Compatible with ►	uvex code:	Kit colour:	Face seal markings
6109250	Translucent-grey, blue	58 mm	15 mm	W 166 F CE		6118012	Black, anthracite	W 166 3F CE

Prescription safety spectacles

uvex RX sp frames

Dynamic, wrap-around design with protective functions integrated in frame design



Spectacles with more strongly curved lenses:
The planes of the right and left lenses are tilted toward one another.



While
stocks last

uvex RX sp
5510



- ✓ Sporty, plastic "wraparound" design with curved lenses and anatomic sport glazing
- ✓ Side shield and integrated brow guard frame design
- ✓ Good fit with anatomically shaped soft nose bridge
- ✓ Sporty arms with a combination of soft and hard components ensure increased comfort and non-slip fit

uvex code:	Frame colour:	Lens diameter	Bridge width	Frame markings
6109216	Black, light grey	62 mm	17 mm	W 166 F CE

While
stocks last

uvex RX sp
5510



- ✓ Sporty, plastic "wraparound" design with curved lenses and anatomic sport glazing
- ✓ Side shield and integrated brow guard frame design
- ✓ Good fit with anatomically shaped soft nose bridge
- ✓ Sporty arms with a combination of soft and hard components ensure increased comfort and non-slip fit

uvex code:	Frame colour:	Lens diameter	Bridge width	Frame markings
6109217	Black, orange	62 mm	22 mm	W 166 F CE

Prescription safety inserts

uvex RX cf



uvex RX cf

5500

(uvex skyguard NT)



- ✓ Spectacles with all-round protection
- ✓ Fixed RX insert for your individual prescription
- ✓ Meets the requirements for additional markings 3 (liquids, droplets) and 4 (coarse dust)
- ✓ The side arms can be adjusted to a variety of different lengths, allowing the glasses to be adapted to suit all facial shapes
- ✓ Flexible soft components adapt to the wearer's face contours

uvex code:	Frame colour:	Lens diameter	Bridge width	Frame markings
6108200	Blue, grey	48 mm	20 mm	W 166 34 F CE

uvex RX cf

5501

(uvex carbonvision)



- ✓ Small goggles with fixed RX insert to suit your individual prescription
- ✓ Meets the requirements for additional markings 3 (liquids, droplets) and 4 (coarse dust)
- ✓ Highly compatible with other PPE
- ✓ Low-volume frame design
- ✓ Indirect ventilation

uvex code:	Frame colour:	Lens diameter	Bridge width	Frame markings
6108201	Black, grey	48 mm	20 mm	W 166 34 B CE

uvex prescription inserts for use with

Self-contained Breathing Apparatus

Prescription range for uvex BA (Self-contained Breathing Apparatus) inserts are only available with CR39.

uvex

9000



- ✓ For use with Sabre and Kemira respirator mask
- ✓ With short side arms this frame clips into slots moulded into the respirator

uvex code:	Frame colour:	Lens diameter	Bridge width	Lens Material
9000	Silver	53 mm	18 mm	CR39

uvex

9100



- ✓ Suitable for all respirators
- ✓ Thin metal side arms to fit close to the head to ensure little or no leakage when wearing a full face respirator

uvex code:	Frame colour:	Lens diameter	Bridge width	Lens Material
9100	Silver	44 mm	22 mm	CR39

uvex

9250



- ✓ For use with Kemira, Interspiro respirator mask
- ✓ Designed to fit inside a full face respirator which can be easily adjusted

uvex code:	Frame colour:	Lens diameter	Bridge width	Lens Material
9250	Silver	50 mm	20 mm	CR39

uvex

9255

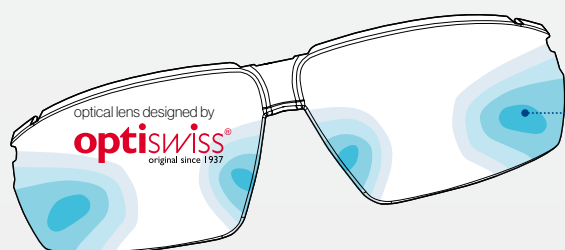


- ✓ For use with Draeger Panorama respirator mask
- ✓ Fits in to mask with vertical adjustment
- ✓ Insert for Draeger Futura also available

uvex code:	Frame colour:	Lens diameter	Bridge width	Lens Material
9255	Silver	59 mm	18 mm	CR39

Safety spectacles with integrated dioptre correction

uvex i-3 add



Progression zones

The patented lens technology integrates two progression zones for near vision on the inside of the duospherical lens. The correction strength at the bottom of the lenses is +1.0 or +2.0, depending on the model.



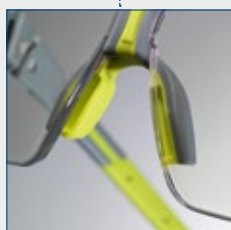
Variable side arm inclination

The 5-position side arm inclination allows individual adjustment and optimum coverage of the eyes.



Addition

Two models are available for individualised correction of near vision. (+1.0 dpt. and +2.0 dpt.)



Flexible nose loops

The extremely soft adjustable Softflex nose loops ensure a secure fit and can be individually adapted to sit comfortably on the nose.

uvex supravision excellence

The coating guarantees extreme scratch resistance on the outside and permanent anti-fogging properties on the inside.

Including soft spectacles case with microfibre cloth.



MADE IN GERMANY

uvex
i-3 add

A ready-to-wear safety spectacle with integrated optical correction (+1.0 or +2.0 dioptre) – no optician visit required. Featuring patented lens technology for seamless vision enhancement and uvex coatings for lasting clarity and durability.

- ✓ Safety spectacles with patented lens technology - integrated optical correction strength of +1.0 or +2.0 dioptre
- ✓ Completely invisible dioptre correction starts in the middle of the lens and increases gradually towards the lower edge
- ✓ uvex permanent lens coating technology: anti-fog coating on the inside of the lens, scratch-resistant on the outside - increased durability and safety
- ✓ Variable side arm inclination allows wearer to achieve a secure, comfortable fit for optimum protection
- ✓ Extremely soft nose bridge pads ensure non-slip, comfortable fit
- ✓ Metal free for reduced weight and robustness
- ✓ 100% UVA and UVB up to 400nm

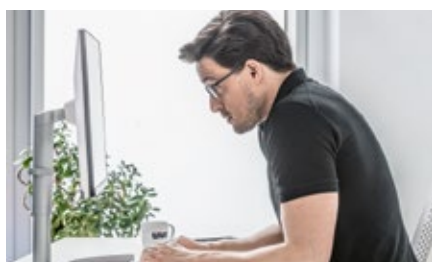
uvex code:	Strength	Lens	Frame colour:	Frame markings	Lens coating
6108210	1.0 dpt.	PC clear, UV 400, 2C-1.2 W 1 FTKN CE	Anthracite, lime	W 166 FT CE	uvex supravision excellence
6108211	2.0 dpt.	PC clear, UV 400, 2C-1.2 W 1 FTKN CE	Anthracite, lime	W 166 FT CE	uvex supravision excellence

uvex VDU spectacles

Designed for screen work

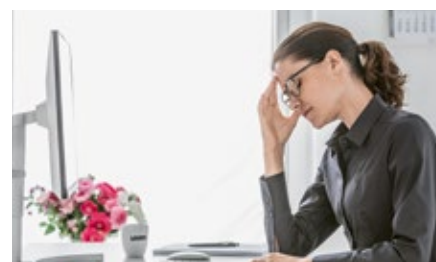


uvex VDU spectacles are specially developed for comfortable, clear vision at **computer workstations**. Unlike standard reading glasses, which are optimised for a short viewing distance (around 30 cm), VDU / occupational lenses are designed for the typical screen distances of 50 – 80 cm. This allows natural focus without straining the eyes or adopting awkward postures.



Without the correct lens type, wearers often adjust their posture, tilting their heads or leaning forward, to see clearly. This can lead to neck and shoulder strain and headaches.

For those who use reading glasses or varifocals and spend most of the day at a computer, VDU spectacles are the ideal choice when safety eyewear isn't required.



uvex offers a wide range of focus types and frame designs to suit individual needs.

Every pair meets the uvex quality standard, delivering precision optics, advanced processing technology, and materials free from harmful substances – all rigorously tested for your safety.

uvex recommends applying an anti-reflective coating to further enhance optical clarity and comfort.

Protect your vision.
Boost your focus.

uvex VDU spectacles

Plastic frames



6110074



6110078



6110075



6110081



6110077



6110082

	uvex RX 3517	uvex RX 3518	uvex RX 3520	uvex RX 3521	uvex RX 3524	uvex RX 3525
uvex code	6110074	6110075	6110077	6110078	6110081	6110082
Ref. no.	3517 5400 55/20	3518 1525 49/21	3520 5500 52/18	3521 4364 54/15	3524 1510 56/16	3525 1029 59/17
Lens diameter	55 mm	49 mm	52 mm	54 mm	56 mm	59 mm
Bridge width	20 mm	21 mm	18 mm	15 mm	16 mm	17 mm
Colour	Havanna	Grey, translucent	Brown	Violet, rosé	Translucent-grey	Black, transparent
Hinge			Spring hinge	Spring hinge	Spring hinge	Spring hinge

uvex VDU spectacles

Metal frames



6110050



6110056



6110067

uvex VDU spectacles

Titanium frames



6110071



6110070



6110072

	uvex RX 3112	uvex RX 3118	uvex RX 3122	uvex RX ti 3902	uvex RX ti 3903	uvex RX ti 3904
uvex code	6110050	6110056	6110067	6110070	6110071	6110072
Ref. no.	3112 1233 54/17	3118 7190 55/17	3122 7014 59/18	3902 1830 55/18	3903 3035 49/21	3904 1900 53/17
Lens diameter	54 mm	55 mm	59 mm	55 mm	49 mm	53 mm
Bridge width	17 mm	17 mm	18 mm	18 mm	21 mm	17 mm
Colour	Black, blue	Petrol, vintage	Dark green, gun	Silver, dark blue	Dark blue	Silver, matt
Hinge	Spring hinge	Spring hinge	Spring hinge	Spring hinge		

Sustainability at uvex safety protecting planet

Sustainable protection for people and the planet

Our custom protective products are used for much longer than standard products – this saves resources and reduces CO₂ emissions.

Prescription safety spectacles and prescription VDU spectacles are supplied in reusable cases.



Material

Products featuring this symbol contain bio-based materials, materials that can be composted at home or recycled materials. Recycled materials covers both post-consumer recycling materials (PCR) and post-industrial recycling materials (PIR).



Carbon footprint

We calculate the product-specific greenhouse gas emissions using the methods set out in the ISO 14067 standard.

Calculation method: IPCC 2021 GWP100 (based on ISO 14067); SimaPro with ecoinvent database; Scope: Cradle-to-Customer; The CO₂ values provided were valid at the time of calculation and may be subject to change due to database or methodology updates.



reusable cases
that last even longer
than the products
themselves

**no
single-use packaging**
used in shipping

approx. 2.3 t less
plastic in 3 years due
to the avoidance of
demo lenses

approx. 1.5 years
of use for
prescription safety
spectacles

**sustainable
packaging**
made from recycled
cardboard boxes

30% of our
plastic frames for
prescription safety
spectacles are
**made from sustainable,
bio-based plastic**

our goal:
almost all the hard compo-
nents of our plastic frames
for prescription safety
spectacles are made from
bio-based materials





To get your company set up on the uvex prescription portal, speak to your uvex solutions specialist.
To find their details visit: uvex-safety.ie/contact

UVEX SAFETY (UK) LTD
uvex House
Farnham Trading Estate Farnham
Surrey
England
GU9 9NW

Tel: 01252 731200 - Option 1
Email: prescription@uvex-safety.ie
Website: uvex-safety.ie