

uvex



Safety Footwear

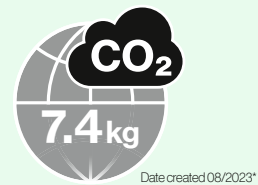
protecting people

Product system planet series › Safety Footwear

uvex has developed the **protecting planet** icon, to help raise awareness of its commitment to achieving increased sustainability. Based on the brand claim, **protecting people**, our sustainable approach integrates three core interlinked pillars – **ecology, economy** and **social responsibility**, that are incorporated throughout the business to improve our sustainability performance.

This explains the comprehensive audit, measurement and evaluation management process uvex undertakes along the entire value chain to ensure its products are as sustainable as possible.

uvex 1 X-craft planet



MADE IN ITALY

protecting planet
by using bio-based material //
by using recycled material //
by maximum reduction of pollutants

Upper

› 100 percent recycled polyester made from PET bottles

Textile penetration resistance

› 100 percent recycled fibres

Distance mesh lining

› 52 percent recycled polyester and 18 percent bamboo fibres

Comfortable climatic insole

› 73 percent recycled PU foam and 85 percent recycled polyester

Health

› produced in accordance with the provisions of the REACH regulation and beyond, according to the specifications of the uvex banned hazardous substances list

Upper
100%
 Recycled polyester

Midsole
15%
 Recycled
 PU surplus



68081

Lining
18%
 Bamboo



protecting planet

by using environmentally-friendly packaging

Shoe boxes

- › 90 percent recycled cardboard
- › 100 percent recycled tissue paper

Instructions for use

- › 100 percent recycled paper



protecting planet

by reducing waste //
 by reducing CO₂ emissions

Certifications

- › Environmental Management ISO 14001 (since 2017)

Production

- › exclusively with green electricity and green gas
- › Use of a photovoltaic system
- › Continuous optimisation of the cleaning and injection process

Waste prevention

- › Continuous process and tool optimisation to reduce PU waste
- › uvex i-PUREnrj planet midsole made of 15 percent granulated and recycled PU surplus that cannot be prevented



The uvex brand is our responsibility

We have been producing and selling high-quality products for the protection of people in sport, leisure and work for **over 90 years**. And if you want to protect people, **you have to take responsibility**.

It is precisely from this mission that our obligation derives to act in a **sustainable, social and socially-responsible** manner.

uvex safety footwear

The safety footwear product group has embodied its motto, protecting planet, for over 10 years. Our uvex Cagi production facility in Italy is a certified environmental management system in accordance with ISO 14001 and has been exclusively making use of green electricity and green gas since 2019. A photovoltaic system on the roof provides environmentally friendly solar energy.

Since 2011, we have implemented numerous projects to reduce the amount of PU waste generated. Since the end of 2022, we have been able to granulate PU surpluses and reuse them in our midsoles. We now use the uvex i-PUREnrj planet midsole with 15% granulate in over 30 models. The goal is to continuously increase the proportion of recycled and bio-based materials in the product portfolio.

Materials and procurement

- › By 2024: at least one recycled component in 100% of our catalogue range
- › Goal by 2030: 10% of the weight of the item is made from sustainable materials
- › Collaboration with the Leather Working Group for certified leather
- › Main suppliers are ISO 14001-certified environmental management systems

Production

- › Reuse of PU surplus generated by uvex production processes as granules in uvex i-PUREnrj planet midsoles and uvex x-tended grip planet outsoles
- › Continuous optimisation of the injection and cleaning processes
- › Continuous measures to reduce CO₂ and waste

Packaging

- › Shoe box made of 90% recycled paper
- › Tissue paper and instructions for use made from 100% recycled paper

Product lifecycle

- › The use of high-quality and durable materials in combination with professional workmanship ensures the longevity of our products.
- › uvex overperformance defines standards that exceed test requirements
- › Initial projects with external partners to recycle safety shoes

Green electricity

100%

at the uvex Cagi site

Number of models with
uvex i-PUREnrj planet
midsole

33

with 15%
granulate



PU waste reduction at
uvex Cagi

-46%

since 2011

Proportion of models with at least
one sustainable component

100%

in 2024 catalogue



Safety footwear for the highest demands

uvex safety footwear competence center



Innovation:

One of the most state-of-the-art production facilities in Europe

Laser roughing cell provides excellent-quality rough contours for optimal sole adhesion.

uvex competence center for safety footwear in Ceva (CN), Italy

Development expertise, state-of-the-art robot-controlled production systems and optimised process structures to meet the highest ecological standards guarantee the first-class and sustainable quality of our safety shoes.

The production in Italy, which is one of the most modern production facilities for safety shoes in Europe, ensures efficient, resource-saving production and short distances from manufacturer to user.

Expertise

- production of direct-injected safety shoes with outsoles made of polyurethane, thermoplastic polyurethane and rubber
- innovative production technologies, e.g. for using rebound properties
- six DESMA direct-injection machines for producing uvex outsoles, with DESMA AMIR system (automated material handling with integrated robots)
- extensively equipped test laboratory for quality and production assurance and for product development



Specialisation:

Direct injection of uvex safety shoe soles

Made in uvex
Made in Italy

Sustainability

- uses 100% green energy and green gas
- uses environmentally friendly solar energy (photovoltaic system installed since 2011)
- PUR waste management for recycling and saving polyurethane waste
- uses water-based release agents (numerous approvals in the automotive and supplier industries)

Certifications

- ISO 9001-certified quality management system (since 2003)
- ISO 14001-certified environmental management system (since 2017, first certificate in the uvex safety group)
- ISO 45001-certified occupational health and safety management system (since 2020, replacement for OHSAS 18001 certification)

Expertise at uvex headquarters in Fürth, Germany

- product design and development
- biomechanics
- model building and prototyping
- quality and international manufacturing support
- supply chain management
- commercial processing
- process engineering
- training, product management and marketing

Responsibility:

Uses renewable energy and CO₂-neutral electricity and gas



Safety Footwear

Areas of application: light · medium · heavy



light areas of application

'Light' covers all areas of application where work is primarily carried out indoors and without significant demands on the physical properties of the outsole. Examples include assembly workplaces, as well as storage and logistics areas. We recommend products from the uvex 1 G2, uvex 1, uvex 1 x-tended support, uvex 1 sport, uvex 1 sport white and uvex 1 business product groups.

medium areas of application

'Medium' applications usually take place both indoors and outdoors, with the outsole needing to be significantly more robust. Typical users include manual labourers, public sector employers and people working the chemical industry. We recommend products from the uvex 2, uvex 2 MACSOLE®, uvex 2 construction, uvex 2 xenova and uvex 2 trend product groups.

heavy areas of application

'Heavy' applications involve external influences that place extensive demands on the shoe, its durability and stability. They are usually found in heavy mechanical engineering and in the construction industry, especially in building and civil engineering. We recommend products from the uvex 3, uvex 3 MACSOLE® and uvex 3 asphaltpro product groups.

Safety Footwear

uvex multiple fit system

uvex multiple fit system

As part of the safety footwear multiple fit system, a footwear style is offered in the same size but in a range of different fits. The different fits are based on the measurement of the widest part of the foot. While the foot is under load, a measurement is taken of either the circumference of the foot at the base joint of the big toe and the base joint of the little toe, or alternatively the width of the foot at this point (see opposite).

The classification of sizes and the corresponding values are detailed in the table below (all measurements in mm):

uvex shoe size	Foot length	UK size	Width 10	Width 11 (standard)	Width 12	Width 14
35	210-217	3	216.5	222.5	228.5	240.5
36	218-225	3.5	221	227	233	245
37	226-232	4	225.5	231.5	237.5	249.5
38	233-240	5	230	236	242	254
39	241-247	6	234.5	240.5	246.5	258.5
40	248-255	6.5	239	245	251	263
41	256-262	7	243.5	249.5	255.5	267.5
42	263-270	8	248	254	260	272
43	271-277	9	252.5	258.5	264.5	276.5
44	278-285	10	257	263	269	281
45	286-292	10.5	261.5	267.5	273.5	285.5
46	293-300	11	266	272	278	290
47	301-307	12	270.5	276.5	282.5	294.5
48	308-315	13	275	281	287	299
49	316-322	14	279.5	285.5	291.5	303.5
50	323-330	14.5	284	290	296	308
51	331-337	15	288.5	294.5	300.5	312.5
52	338-345	16	293	299	305	317

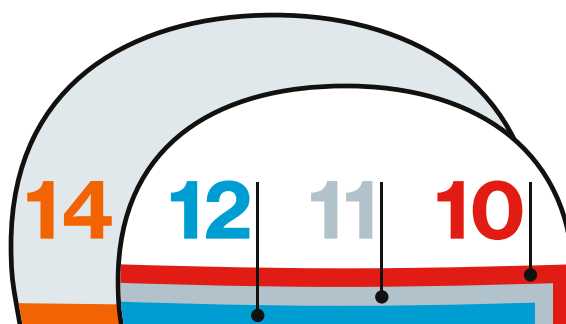
All measurements in mm.

Anatomical circumference of the foot

Base joint of the big toe



The required width can be determined from the table according to the wearer's foot length.



uvex fit advisor app

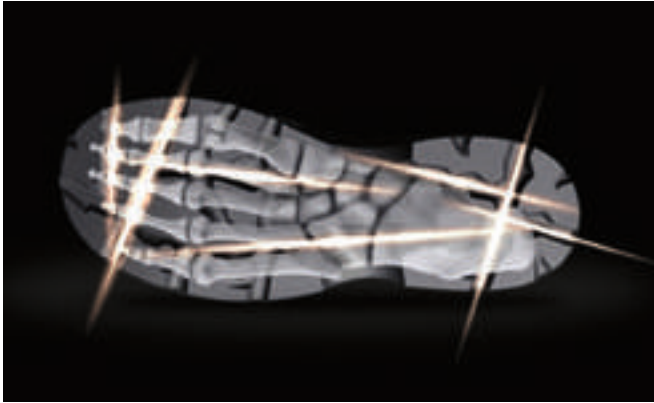
- User-friendly operation
- Automatic foot recognition
- Size and width recommendation
- Shoe recommendation based on the area of application
- Filter options in the footwear advisor



Find out how it works



Safety Footwear Technologies



bionom X

Unique design approach of safety shoes based on biomechanics. The visible, shared properties optimise the interaction between the foot, the upper part of the shoe, the sole and the ground, ensuring exceptional performance and comfort for many applications.

clima zone

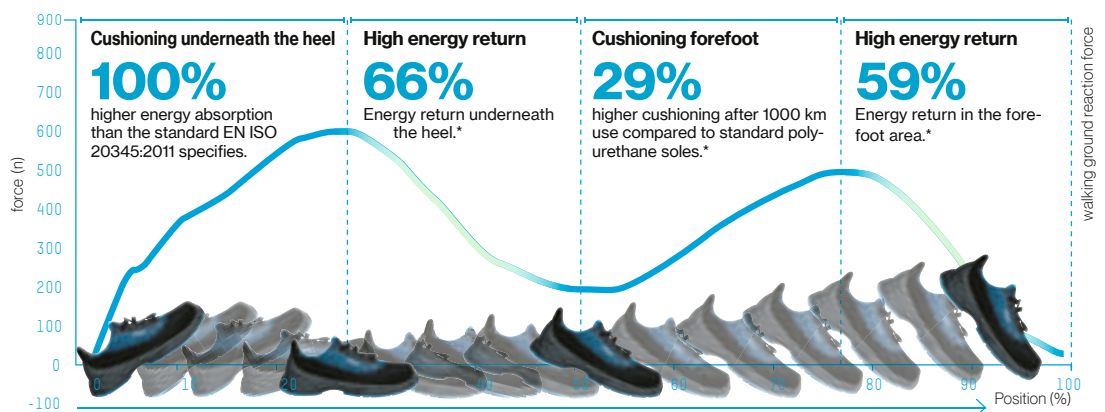
Innovative climate control system that optimises breathability and climate management. The selection of materials, reduced number of layers and intelligent processing technologies all help to draw moisture away from the foot and ensure exceptional wearer comfort.



Patented rubber compound especially for the uvex and Heckel brands. Featuring exceptional slip resistance, durability, abrasion resistance, grip, heat and cold resistance, chemical resistance and high elasticity, the rubber outsole is ideal for medium and heavy-duty applications.

MACSOLE® technology with added recycled rubber in the form of devulcanised powder and granulate forms the basis of MACSOLE® planet. Using recycled material in this way saves resources and reduces waste while maintaining the same level of performance.

i-PUREnrj



Midsole with shock absorption and energy-return features, made of foamed polyurethane. This helps the wearer keep fit for longer and reduces premature fatigue and the risk of injury.

Safety Footwear Technologies



Water vapour permeability

40x

better than the minimum requirement of EN ISO 20345

Water vapour coefficient

17x

better than the minimum requirement of EN ISO 20345

Water penetration

100%

better than the minimum requirement of EN ISO 20345

Water absorption

10x

better than the minimum requirement of EN ISO 20345

uvex i-PURE nrj planet

uvex i-PUREnrj technology plus up to 20% recycled polyurethane residues from our in-house production processes. Using recycled material in this way saves resources and reduces waste while maintaining the same level of performance.

uvex x-dry knit

The unique, breathable and water-resistant knitted upper prevents sweating due to overheating and prevents water entering the shoe from the outside.

Abrasion with uvex x-tended grip

66%

less abrasion than standard

With double load

33%

less abrasion than standard



uvex x-tended grip planet

The TPU outsole with up to 10% recycled PU granulate provides abrasion resistance and slip resistance on smooth and wet floors.

#Weave
SEE THE LIGHTER SIDE

Weave's patented structure in the grooves of the sole reduces the weight by up to 20%.



Safety Footwear

Pictogram overview

ankle pro

uvex anklepro

Absorbent foam in the ankle area provides excellent protection against impacts.



flex zone

uvex flexzone

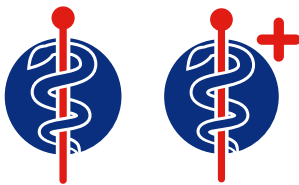
Integrated flex groove in the midsole design increases sole flexibility when bending the forefoot and improves comfort during tasks that require kneeling.



lace lock

uvex lacelock

Locking lace hooks ensure increased stability in the midfoot area.



uvex medicare

Certified for orthopaedic adjustments in accordance with EN ISO 20345:2022, German DGUV regulation 112-191 and/or Austrian ÖNORM Z 1259.

uvex medicare = certified for orthopaedic insoles

uvex medicare + = certified for orthopaedic insoles and shoe adjustments



Silicone-free

Free of silicones, plasticisers and other paint wetting impairment substances in accordance with automotive industry tests.



water stop

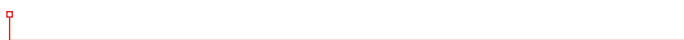
uvex waterstop

Leather that protects against water penetration for four times longer than is required by the safety shoe standard.



Snowflake

Shoes with cold-insulating lining material that keeps the foot warm for longer.



work zone

uvex workzone

Forefoot protection provided by a dynamic scuffcap in addition to high-performance PUtek upper for demanding tasks.





**DIALED IN.
PRECISION FIT.**

The BOA® Fit System.

Delivering fit solutions purpose-built for performance, the BOA® Fit System is featured in products across industries (in medical, sports and workwear) and consists of three integral parts: a micro-adjustable dial, a super-strong lightweight lace and low friction lace guides.

The BOA® benefits.

Fit to perform.

Dial in your precise fit quickly and effortlessly. Even micro adjustments can be made quickly and easily on the fly, so you can always get the job done.

Confidence in all conditions.

The BOA® Fit System is extremely robust and has been tested under the toughest conditions. It will work as hard as you do so you can stay focused and confident in any environment - without ever having to remove your gloves.




Stay secure and focused.

BOA®'s precision engineered laces stay contained in the dial cartridge, out our your way and out of machinery.

Fit for life with BOA®.

The BOA® Fit System dials and laces are guaranteed for the lifetime of the product on which they are integrated.

How it works.

-  push in to engage
-  turn to tighten
-  pull up for quick release

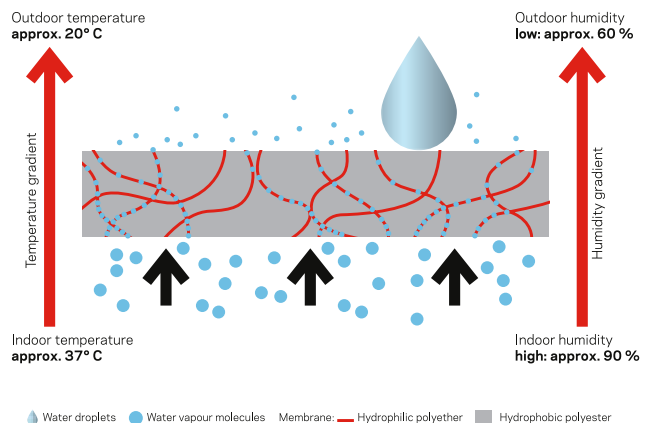


sympatex®

Excellent comfort whatever the weather: waterproof, breathable, windproof

There is nothing more unpleasant than wet and cold clothing and shoes. Sympatex has therefore developed a special membrane which absorbs the water vapour and removes it to the outside. This keeps the foot warm and dry even in extreme situations.

And the best thing about it is that the higher the physical activity, the more efficient the sympatex membrane works. Shoes with a sympatex membrane also provide effective protection from low temperatures and rain.



-  100% WATERPROOF
-  100% WINDPROOF
-  OPTIMALLY BREATHABLE
-  DURABLE
-  RECYCLABLE & RECYCLED
-  PFC-FREE
-  PTFE-FREE
-  CO2 NEUTRAL



www.sympatex.com

Personal insoles are not permitted in safety shoes.



Orthopaedic solutions for uvex safety shoes

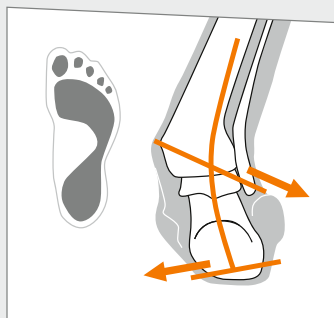
Our feet are extremely important for our daily life – after all they help us to stand and move from A to B. It is therefore particularly important to protect our feet in working life – whether that's because we're running, kneeling, working on a machine or in order to prevent an occupational accident. Safety shoes are tested and certified at regular intervals by independent test institutes for protective features, such as ESD, cap testing etc. and for effectiveness, in accordance with the requirements of DIN EN ISO 20345.

In order to ensure that all safety-related protective features are still guaranteed in the event of an orthopaedic change to the safety shoe, orthopaedic insoles must only be used in combination with tested, orthopaedic materials.

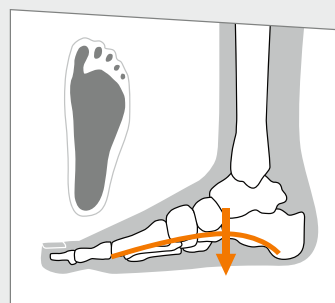
This means that personal orthopaedic insoles are not allowed in safety shoes. All uvex medicare products have therefore been tested and certified in combination with uvex safety shoes.



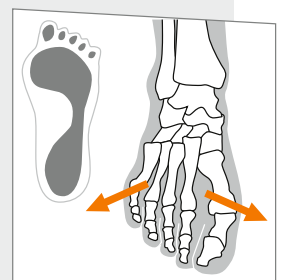
uvex medicare



Skewfoot



Flatfoot



Splayfoot

MADE FOR YOUR FEET

MADE IN UVEX



How do I get an orthopaedic adjustment for uvex safety shoes?

uvex requires the footprint of your feet. This can be taken by our field service on site or you can use our uvex medicare footprint set – a convenient, simple and flexible way to self-record the footprint. All order details can be found on the order form in the folder.



Instructions



1 Separate the white sheet from the clear protective film and place the film over the blueprint, making sure that there are no wrinkles.

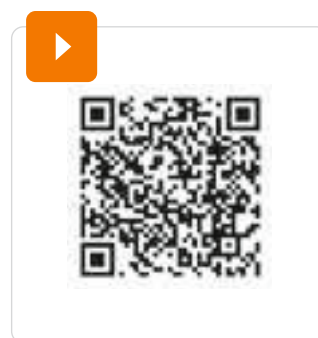


2 Place this on a flat surface and place your foot in the middle of it, putting your full body weight onto it. Draw around the foot with a pen.



3 Peel off the transparent film and remove the blueprint. Now place the film with your footprint on the chequered backing sheet and smooth it out, ensuring that there are no creases.

Repeat the process for your other foot.



Watch our How-to video for a clear explanation of the individual steps.

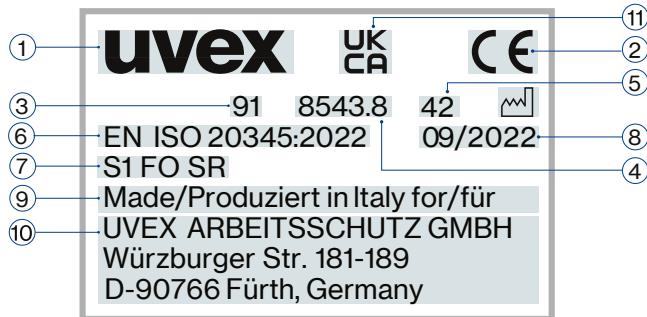
Simply scan the QR code.



Safety Footwear

Standards · Labels

Labelling



The labelling on the shoe contains the following information

- ① Manufacturer
- ② CE symbol
- ③ Manufacturer's type designation
- ④ Article number
- ⑤ Size
- ⑥ Number of European standard
- ⑦ Symbol for protection
- ⑧ Date of manufacture
- ⑨ Country of Manufacture
- ⑩ Postal address of the manufacturer
- ⑪ UKCA symbol

Basic and additional requirements for safety shoes (in accordance with EN ISO 20345:2022, marking S) and occupational shoes (in accordance with EN ISO 20347:2022, marking O)

Symbol	Requirement	Category													
		SB	S1	S2	S3	S3L	S3S	S5	S6	S7	S7L	S7S	O1	O2	
-	Basic requirements	X	X	X	X	X	X	X	X	X	X	X	X	X	
-	Toe cap, tested via 200 joule drop test and 15 kilonewton pressure test	X	X	X	X	X	X	X	X	X	X	X	-	-	
-	Footwear made of leather or other materials, not including solid rubber or total polymers	O	X	X	X	X	X	-	X	X	X	X	X	X	
-	Footwear made of solid rubber or total polymers	O	-	-	-	-	-	X	-	-	-	-	-		
-	Slip resistance on ceramic tile floors with SLS	X	X	X	X	X	X	X	X	X	X	X	X	X	
-	Closed seat region	O	X	X	X	X	X	X	X	X	X	X	X	X	
A	Antistatic footwear	O	X	X	X	X	X	X	X	X	X	X	X	X	
E	Energy absorption of seat region	O	X	X	X	X	X	X	X	X	X	X	X	X	
WPA	Water penetration and absorption of upper material	O	-	X	X	X	X	-	X	X	X	X	-	X	
WR	Whole shoe waterproof	O	O	O	O	O	O	-	X	X	X	X	O	O	
P	Perforation resistance, metallic insert	O	O	O	X	-	-	X	O	X	-	-	O	O	
PL	Perforation resistance, non-metallic insert, tested with a 4.5 mm test nail	O	O	O	-	X	-	-	O	-	X	-	O	O	
PS	Perforation resistance, non-metallic insert, tested with a 3.0 mm test nail	O	O	O	-	-	X	-	O	-	-	X	O	O	
-	Treaded sole	O	O	O	X	X	X	X	O	X	X	X	O	O	

Additional requirements for special applications

Symbol	Requirement
FO	Fuel resistance and oil resistance
SR	Slip resistance on ceramic tile floors with glycerol
HI	Heat insulation of the sole complex
CI	Cold insulation of the sole complex
HRO	Heat resistance of the outsole
M	Metatarsal protection
AN	Ankle protection
CR	Cut resistance of the upper part of the shoe
SC	Abrasion resistance of optional overcaps
LG	Outsoles provide hold on ladders

X = Requirement must be fulfilled O = Requirement may be fulfilled, but is not mandatory - = Requirement cannot be fulfilled

To ensure optimal clarity, we have included the labelling in accordance with both the old and the new standard in this catalogue. The new labelling on the products will be introduced gradually. The label on your product will help you to identify the version of the standard to which the product is certified.

Safety Footwear

Standards · Labels · ESD

Perforation resistance

The perforation resistance of the footwear has been measured in a laboratory using standardised nails and forces. Nails with a smaller diameter and higher static or dynamic loads increase the risk of perforation. Under these conditions, additional protective measures should be considered. Three generic types of perforation-resistant insoles are currently available for PPE footwear. These include types made of metal materials and of non-metallic materials, which must be chosen by means of an activity-based risk assessment. All types offer protection against perforation risks, but each has different additional advantages or disadvantages, including the following:

Metal (P e.g. S1 P, S3):

Is less affected by the shape of the sharp object/hazard (i.e. diameter, geometry, sharpness) due to the processes used in shoe manufacturing, however, it may not be possible to cover the entire bottom of the foot.

Non-metal (PS or PL or category e.g. S1 PS, S3L):

May be lighter and more flexible and may cover a larger area, but perforation resistance may vary more depending on the shape of the sharp object/hazard (i.e. diameter, geometry, sharpness). In terms of the protection obtained, two types are available. Type PS may offer better protection against objects with a smaller diameter than type PL.

Electrostatic

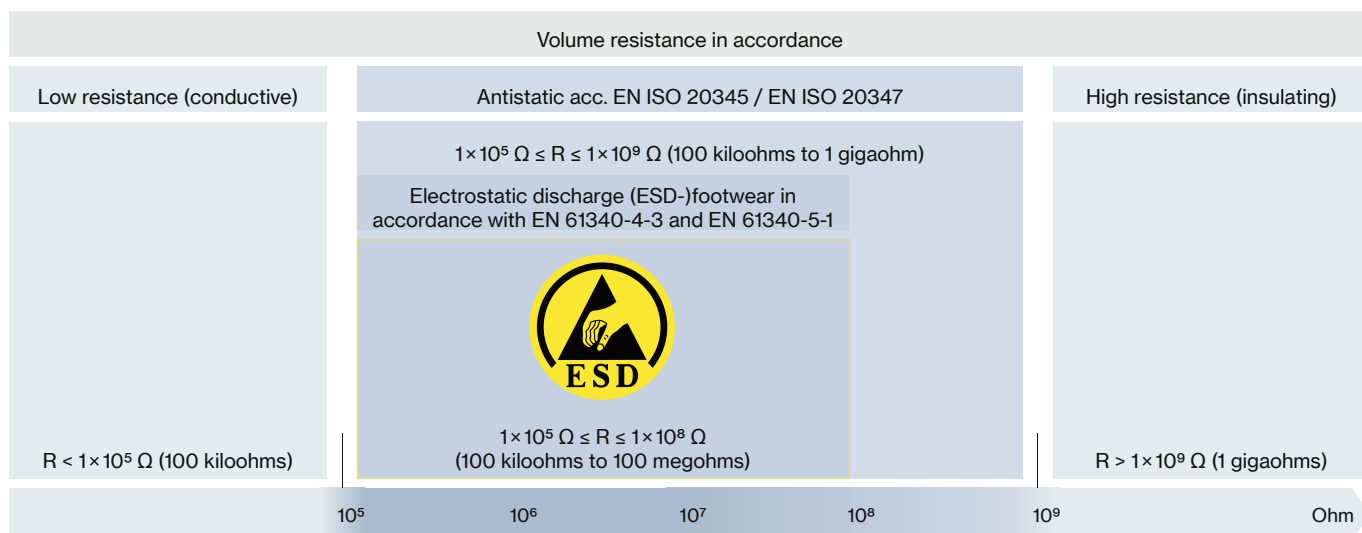
Controlling unwelcome electrostatic charge is becoming an increasingly important role in industry, as more and more employees come into contact with processes, materials or objects which are sensitive to electrostatic charge. It is often necessary to use safety footwear as part of a system to conduct electrostatic charge in such workplaces.

Independent of various measuring methods, volume resistance between 100 kilohms (1.0×10^5 ohms) and 100 megohms (1×10^8 ohms) is required to fulfil the various relevant standards (e.g. EN ISO 20345, EN 61340).

All ESD-certified products in this catalogue feature the ESD symbol.



These products are also suitable in accordance with the specification for conductive footwear in the German Technical Rules for Hazardous Substances (TRGS) 727 "Avoiding risks of ignition resulting from electrostatic charges."



R = electrical resistance





Safety Footwear

light areas of application

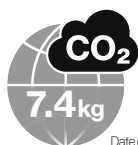
uvex

Safety Footwear

uvex 1 x-craft planet



68081
68082
68083



Date created: 08/2023*

clima zone i-PUREnrj x-tendedgrip



uvex 1 x-craft planet · Shoe S1 PL

The sustainable cherry on the cake. The uvex 1 x-craft planet offers the next level of sustainability. It is the perfect combination of the innovations of the uvex 1 x-craft product family and the sustainable materials for which the uvex 1 G2 planet is known: Midsole and outsole with up to 15% recycled granulate from residues, upper made of recycled and bio-based materials such as PET bottles and bamboo. In total, it consists of 30% recycled materials in accordance with DIN EN ISO 14021:2016.

Features:

- uvex i-PUREnrj planet midsole with shock-absorption and energy-return features, made with 15% recycled granulate from residues generated by uvex production processes
- abrasion-resistant uvex x-tended grip planet TPU outsole made with 10% recycled granulate from residues generated by uvex production processes
- foamed polyurethane scuffcap
- foamed polyurethane heel basket
- 100% metal-free protective toe cap

- flexible textile penetration resistance
- lightweight and breathable uvex x-dry knit planet textile upper
- breathable distance mesh lining made from 18% bamboo and 52% recycled polyamide
- elastic laces
- ESD certified
- sizes 35 to 40 produced using a womens' last
- metal-free
- suitable for people allergic to chrome
- removable antistatic comfortable insole (Art. no.: 95797-0)

Sustainability:

- outsole, midsole, insole, penetration resistance, upper, laces and lining made wholly or partly from recycled materials
- free from harmful substances in accordance with the uvex restricted substances list



uvex 1 x-craft planet	Shoe
Art. no. Width 10	68081
Art. no. Width 11	68082
Art. no. Width 12	68083
Art. no. Width 14	-
Standard EN ISO 20345:2011	-
Standard EN ISO 20345:2022	S1 PL FO SC SR
Upper	textile
Lining	distance mesh lining
Fastening	elastic laces
Sizes	35 to 52
Order unit	PR

You can find more information on uvex medicare on pages 430 to 437

uvex

uvex 1 x-craft pro

the next level



Reliable comfort thanks to a flex-zone within the i-PUREnrj planet midsole and bionom x sole design



workzone with direct injected scuffcap and PUtek upper for extreme durability



Breathability thanks to perforated tongue and lightweight ripstop upper



Sporty look with pull tab and high-quality 3D details on the upper



You can find more information at www.uvex-safety.com/en/x-craft/

Safety Footwear

uvex 1 x-craft pro



68001
68002
68003
68004

68011
68012
68013
68014

clima zone i-PUREnrj x-tendedgrip



uvex 1 x-craft pro · Shoe S1 PL · Lace-up boot S1 PL

Designed for makers. Full support and flexibility are guaranteed by the sole with uvex bionom x and integrated flexzone in the forefoot area. Thanks to the dynamic scuffcap, technological upper materials and perforated tongue design, the range offers added abrasion resistance, protection and breathability. Whether sustainability, comfort, sportiness or innovation, the uvex 1 x-craft is simply the next level safety shoe.

Features:

- uvex i-PUREnrj planet midsole with shock-absorption and energy-return features, made with 15% recycled granulate from residues generated by uvex production processes
- abrasion-resistant uvex x-tended grip planet TPU outsole made with 10% recycled granulate from residues generated by uvex production processes
- foamed polyurethane scuffcap
- foamed polyurethane heel basket

- 100% metal-free protective toe cap
- flexible textile penetration resistance
- breathable, lightweight and tear-resistant ripstop upper
- durable, robust and flexible PUtek upper in the forefoot area
- breathable distance mesh lining
- ESD certified
- sizes 35 to 40 produced using a womens' last
- metal-free
- suitable for people allergic to chrome
- removable antistatic comfortable insole (Art. no.: 95797-0)

Sustainability:

- midsole, outsole, penetration resistance and removable insole made wholly or partly from recycled materials
- free from harmful substances in accordance with the uvex restricted substances list



uvex 1 x-craft pro	Shoe	Lace-up boot
Art. no. Width 10	68001	68011
Art. no. Width 11	68002	68012
Art. no. Width 12	68003	68013
Art. no. Width 14	68004	68014
Standard EN ISO 20345:2011	-	-
Standard EN ISO 20345:2022	S1 PL FO SC SR	S1 PL FO SC SR
Upper	textile/ripstop	textile/ripstop
Lining	distance mesh lining	distance mesh lining
Fastening	elastic laces	shoe laces
Sizes	35 to 52	35 to 52
Order unit	PR	PR

Safety Footwear

uvex 1 x-craft



68021
68022
68023
68024



68031
68032
68033
68034



68041
68042
68043
68044



clima zone i-PUREnrj



uvex 1 x-craft · Perforated shoe S1 PL · Shoe S3L · Lace-up boot S3L

Features:

- uvex i-PUREnrj planet midsole with shock-absorption and energy-return features, made with 15% recycled granulate from residues generated by uvex production processes
- PU outsole
- foamed polyurethane scuffcap
- foamed polyurethane heel basket
- 100% metal-free protective toe cap
- flexible textile penetration resistance
- lightweight and breathable microvelour upper
- breathable distance mesh lining

- ESD certified
- sizes 35 to 40 produced using a womens' last
- metal-free
- suitable for people allergic to chrome
- removable antistatic comfortable insole (Art. no.: 95797-0)

Sustainability:

- midsole, penetration resistance and removable insole made wholly or partly from recycled materials
- free from harmful substances in accordance with the uvex restricted substances list

uvex 1 x-craft	Perforated Shoe	Shoe	Lace-up boot
Art. no. Width 10	68021	68031	68041
Art. no. Width 11	68022	68032	68042
Art. no. Width 12	68023	68033	68043
Art. no. Width 14	68024	68034	68044
Standard EN ISO 20345:2011	-	-	-
Standard EN ISO 20345:2022	S1 PL FO SC SR	S3L FO SC SR	S3L FO SC SR
Upper	microvelour	microvelour	microvelour
Lining	distance mesh lining	distance mesh lining	distance mesh lining
Fastening	elastic laces	elastic laces	shoe laces
Sizes	35 to 52	35 to 52	35 to 52
Order unit	PR	PR	PR

You can find more information on uvex medicare on pages 430 to 437

Safety Footwear

uvex 1 x-craft



68137
68138
68139
68130



68147
68148
68149
68140



68157
68158
68159
68150

clima zone i-PUREnrj



uvex 1 x-craft · Perforated shoe S1 · Shoe S2 · Lace-up boot S2

Features:

- uvex i-PUREnrj planet midsole with shock-absorption and energy-return features, made with 15% recycled granulate from residues generated by uvex production processes
- PU outsole
- foamed polyurethane scuffcap
- foamed polyurethane heel basket
- 100% metal-free protective toe cap
- lightweight and breathable microvelour upper
- breathable distance mesh lining
- ESD certified

- sizes 35 to 40 produced using a womens' last
- metal-free
- suitable for people allergic to chrome
- removable antistatic comfortable insole (Art. no.: 95797-0)

Sustainability:

- midsole, insole and removable insole made wholly or partly from recycled materials
- free from harmful substances in accordance with the uvex restricted substances list



uvex 1 x-craft	Perforated Shoe	Shoe	Lace-up boot
Art. no. Width 10	68137	68147	68157
Art. no. Width 11	68138	68148	68158
Art. no. Width 12	68139	68149	68159
Art. no. Width 14	68130	68140	68150
Standard EN ISO 20347:2011	-	-	-
Standard EN ISO 20347:2022	S1 FO SC SR	S2 FO SC SR	S2 FO SC SR
Upper	microvelour	microvelour	microvelour
Lining	distance mesh lining	distance mesh lining	distance mesh lining
Fastening	elastic laces	elastic laces	shoe laces
Sizes	35 to 52	35 to 52	35 to 52
Order unit	PR	PR	PR

uvex 1 G2 planet

100% Performance.
30% recycled.*



100% recycled shoelaces

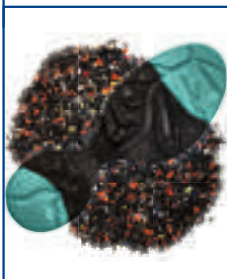
Penetration resistance made from 100% recycled fibres

40% recycled material in the TPU scuffcap

uvex x-tended grip planet

10%

of TPU outsole is made of recycled PU waste



Comfortable climatic insole

100%

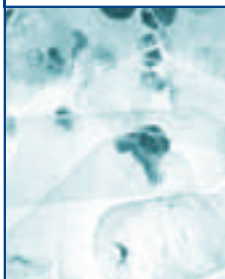
recycled polyester and PU foam



uvex x-dry knit planet

100%

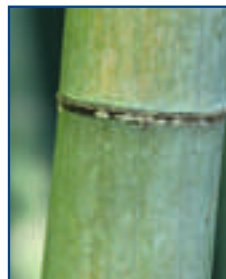
recycled PET bottles in the upper



Distance mesh lining

18%

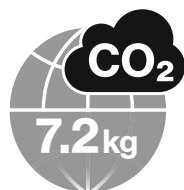
of the lining is made of bamboo, 52% made of recycled polyester



uvex i-PUREnrj planet

20%

of the midsole made of granulate from recycled PU residues



Date created 01/2023



You can find more information at www.uvex-safety.com/uvex-1-g2-planet/



*calculated in accordance with DIN EN ISO 14021:2016

Safety Footwear

uvex 1 G2



68242



clima zone i-PUREnrj x-dryknit x-tendedgrip



uvex 1 G2 planet · Shoe S1 PL

Recycled down to the last crumb: From the upper to the sole, the new uvex 1 G2 planet offers both sustainability and performance in one. The injected polyurethane midsole contains up to 20% granulate made using PU waste from our production processes. In accordance with DIN EN ISO 14021:2016, it consists of 30% recycled materials in terms of weight, without compromising its protective properties or comfort compared to the well-known uvex 1 G2 models. Many of the shoes components, such as the outer shoe material and insole, are made from 100% recycled materials.

Features:

- uvex i-PUREnrj planet midsole with shock-absorption and energy-return features, made with 20% recycled granulate from residues generated by uvex production processes
- abrasion-resistant uvex x-tended grip planet TPU outsole made with 10% recycled granulate from residues generated by uvex production processes
- foamed polyurethane heel basket

- 100% metal-free protective toe cap
- flexible textile penetration resistance
- lightweight and breathable uvex x-dry knit planet textile upper
- TPU scuffcap made from 40% recycled material
- breathable distance mesh lining made from 18% bamboo and 52% recycled polyamide
- ESD certified
- dust tongue
- sizes 35 to 40 produced using a womens' last
- suitable for people allergic to chrome
- removable antistatic comfortable insole (Art. no.: 94907-0)

Sustainability:

- outsole, midsole, insole, penetration resistance, upper, laces, scuffcap and lining made wholly or partly from recycled materials
- free from harmful substances in accordance with the uvex restricted substances list

uvex 1 G2 planet	Shoe
Art. no. Width 11	68242
Standard EN ISO 20345:2011	S1 P SRC
Standard EN ISO 20345:2022	S1 PL FO SR
Upper	textile
Lining	distance mesh lining
Fastening	elastic laces
Sizes	35 to 52
Order unit	PR

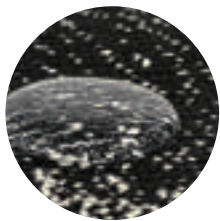
uvex 1 G2

Science. Not Fiction.

uvex i-PUREnrj Technology

Cushioning. Stability. Energy Return.

The future is full of energy with the pioneering uvex 1 G2. uvex's innovative new polyurethane sole technology – uvex PUREnrj – returns the landing energy over the entire sole unit back to the wearer. It redefines shock absorption and stability, with noticeably greater comfort and significantly lower fatigue in the feet for a working day that is brimming with energy – from beginning to end.



Water-repellent and breathable knitted upper material.

**Less fatigue.
More comfort.
More performance**

21%

less perceived fatigue compared to standard polyurethane soles

68341
68342
68343
68344

uvex 1 G2	Shoe
Art. no. Width 10	68341
Art. no. Width 11	68342
Art. no. Width 12	68343
Art. no. Width 14	68344
Standard EN ISO 20345:2011	S1 P SRC
Standard EN ISO 20345:2022	S1 PL FO SR
Upper	textile
Lining	distance mesh lining
Fastening	elastic laces
Sizes	35 to 52
Order unit	PR

Abrasion and Slip resistance optimised



TPU-polyurethane outsole

Safety Footwear

uvex 1 G2



68361
68362
68363
68364



68371
68372
68373
68374



68381
68382
68383
68384



68401
68402
68403



68391
68392
68393
68394

clima zone i-PUREnrj x-tendedgrip



uvex 1 G2 · Sandal S1 PL · Perforated shoe S1 PL · Shoe S3L · Lace-up boot S3L

Features:

- uvex i-PUREnrj planet midsole with shock-absorption and energy-return features, made with 15% recycled granulate from residues generated by uvex production processes
- abrasion-resistant uvex x-tended grip planet TPU outsole made with 10% recycled granulate from residues generated by uvex production processes
- foamed polyurethane heel basket
- 100% metal-free protective toe cap
- flexible textile penetration resistance
- lightweight and breathable microvelour upper
- TPU scuffcap
- breathable distance mesh lining

- ESD certified
- dust tongue
- sizes 35 to 40 produced using a womens' last
- metal-free (Art. no.: 6836, 6839 only)
- suitable for people allergic to chrome
- removable antistatic comfortable insole (Art. no.: 94907-0)

Sustainability:

- midsole, outsole and insole made wholly or partly from recycled materials
- free from harmful substances in accordance with the uvex restricted substances list



uvex 1 G2	Sandal	Perforated shoe	Shoe	Shoe	Lace-up boot
Art. no. Width 10	68361	68371	68381	68401	68391
Art. no. Width 11	68362	68372	68382	68402	68392
Art. no. Width 12	68363	68373	68383	68403	68393
Art. no. Width 14	68364	68374	68384	-	68394
Standard EN ISO 20345:2011	S1 P SRC	S1 P SRC	S3 SRC	S3 SRC	S3 SRC
Standard EN ISO 20345:2022	S1 PL FO SC SR	S1 PL FO SC SR	S3L FO SC SR	S3L FO SC SR	S3L FO SC SR
Upper	microvelour	microvelour	microvelour	microvelour	microvelour
Lining	distance mesh lining	distance mesh lining	distance mesh lining	distance mesh lining	distance mesh lining
Fastening	hook-and-loop fastening	elastic laces	elastic laces	BOA® Fit System	shoe laces
Sizes	35 to 52	35 to 52	35 to 52	35 to 52	35 to 52
Order unit	PR	PR	PR	PR	PR

You can find more information on uvex medicare on pages 430 to 437

Safety Footwear

uvex 1 G2



68427
68428
68429
68420



68437
68438
68439
68430



68447
68448
68449
68440



68457
68458
68459
68450

clima zone i-PUREnrj x-tendedgrip



uvex 1 G2 · Sandal S1 · Perforated shoe S1 · Shoe S2 · Lace-up boot S2

Features:

- uvex i-PUREnrj planet midsole with shock-absorption and energy-return features, made with 15% recycled granulate from residues generated by uvex production processes
- abrasion-resistant uvex x-tended grip planet TPU outsole made with 10% recycled granulate from residues generated by uvex production processes
- foamed polyurethane heel basket
- 100% metal-free protective toe cap
- lightweight and breathable microvelour upper
- TPU scuffcap
- breathable distance mesh lining

- ESD certified
- dust tongue
- sizes 35 to 40 produced using a womens' last
- metal-free (Art. no.: 6842, 6845 only)
- suitable for people allergic to chrome
- removable antistatic comfortable insole (Art. no.: 94907-0)

Sustainability:

- midsole, outsole, insole and removable insole made wholly or partly from recycled materials
- free from harmful substances in accordance with the uvex restricted substances list

uvex 1 G2	Sandal	Perforated shoe	Shoe	Lace-up boot
Art. no. Width 10	68427	68437	68447	68457
Art. no. Width 11	68428	68438	68448	68458
Art. no. Width 12	68429	68439	68449	68459
Art. no. Width 14	68420	68430	68440	68450
Standard EN ISO 20345:2011	S1 SRC	S1 SRC	S2 SRC	S2 SRC
Standard EN ISO 20345:2022	S1 FO SR	S1 FO SR	S2 FO SR	S2 FO SR
Upper	microvelour	microvelour	microvelour	microvelour
Lining	distance mesh lining	distance mesh lining	distance mesh lining	distance mesh lining
Fastening	hook-and-loop fastening	elastic laces	elastic laces	shoe laces
Sizes	35 to 52	35 to 52	35 to 52	35 to 52
Order unit	PR	PR	PR	PR

Safety Footwear

uvex 1 G2



68487
68488
68489
68480

68467
68468
68469
68460

68527
68528
68529

68537
68538
68539

clima zone i-PUREnrj x-dryknit



uvex 1 G2 · Sandal S1 · Perforated shoe S1 · Shoe S1 · Lace-up boot S1

Features:

- uvex i-PUREnrj planet midsole with shock-absorption and energy-return features, made with 15% recycled granulate from residues generated by uvex production processes
- PU outsole
- foamed polyurethane heel basket
- 100% metal-free protective toe cap
- lightweight and breathable microvelour upper (6846, 6848)
- lightweight and breathable uvex x-dry knit textile upper (6852, 6853)
- TPU scuffcap (6852, 6853)
- breathable distance mesh lining
- ESD certified

- dust tongue
- sizes 35 to 40 produced using a womens' last
- metal-free (Art. no.: 6848, 6853 only)
- suitable for people allergic to chrome
- removable antistatic comfortable insole (Art. no.: 94907-0)

Sustainability:

- midsole, insole and removable insole made wholly or partly from recycled materials
- free from harmful substances in accordance with the uvex restricted substances list



uvex 1 G2	Sandal	Perforated shoe	Shoe	Lace-up boot
Art. no. Width 10	68487	68467	68527	68537
Art. no. Width 11	68488	68468	68528	68538
Art. no. Width 12	68489	68469	68529	68539
Art. no. Width 14	68480	68460	-	-
Standard EN ISO 20345:2011	S1 SRC	S1 SRC	S1 SRC	S1 SRC
Standard EN ISO 20345:2022	S1 FO SR	S1 FO SR	S1 FO SR	S1 FO SR
Upper	microvelour	microvelour	textile	textile
Lining	distance mesh lining	distance mesh lining	distance mesh lining	distance mesh lining
Fastening	hook-and-loop fastening	elastic laces	elastic laces	shoe laces
Sizes	35 to 52	35 to 52	35 to 52	35 to 52
Order unit	PR	PR	PR	PR

Safety Footwear

uvex 1 G2



clima zone i-PUREnrj   

uvex 1 G2 · Sandal S1 · Perforated shoe S1 · Perforated lace-up boot S1 · Perforated boot S1

Features:

- uvex i-PUREnrj planet midsole with shock-absorption and energy-return features, made with 15% recycled granulate from residues generated by uvex production processes
- PU outsole
- foamed polyurethane heel basket
- 100% metal-free protective toe cap
- lightweight and breathable microvelour upper
- breathable distance mesh lining
- ESD certified
- dust tongue

- sizes 35 to 40 produced using a womens' last
- metal-free (Art. no.: 6828, 6831, 6832 only)
- suitable for people allergic to chrome
- removable antistatic comfortable insole (Art. no.: 94907-0)

Sustainability:

- midsole, insole and removable insole made wholly or partly from recycled materials
- free from harmful substances in accordance with the uvex restricted substances list

uvex 1 G2	Sandal	Perforated shoe	Perforated shoe	Perforated lace-up boot	Perforated boot
Art. no. Width 10	68287	68297	68267	68317	-
Art. no. Width 11	68288	68298	68268	68318	-
Art. no. Width 12	68289	68299	-	68319	68329
Art. no. Width 14	68280	68290	-	68310	-
Standard EN ISO 20345:2011	S1 SRC	S1 SRC	S1 SRC	S1 SRC	S1 SRC
Standard EN ISO 20345:2022	S1 FO SR	S1 FO SR	S1 FO SR	S1 FO SR	S1 FO SR
Upper	microvelour	microvelour	microvelour	microvelour	microvelour
Lining	distance mesh lining	distance mesh lining	distance mesh lining	distance mesh lining	distance mesh lining
Fastening	hook-and-loop fastening	elastic laces	elastic laces	shoe laces	hook-and-loop fastening
Sizes	35 to 52	35 to 52	35 to 43	35 to 52	35 to 52
Order unit	PR	PR	PR	PR	PR

Safety Footwear

uvex 1 G2



68497
68498
68499
68490



68507
68508
68509
68500



68307
68308
68309
68300



68337
68338
68339
68330

clima zone i-PUREnrj



uvex 1 G2 · Shoe S2 · Lace-up boot S2

Features:

- uvex i-PUREnrj planet midsole with shock-absorption and energy-return features, made with 15% recycled granulate from residues generated by uvex production processes
- PU outsole
- foamed polyurethane heel basket
- 100% metal-free protective toe cap
- lightweight and breathable microvelour upper
- breathable distance mesh lining
- ESD certified
- dust tongue

- sizes 35 to 40 produced using a womens' last
- metal-free (Art. no.: 6833, 6850 only)
- suitable for people allergic to chrome
- removable antistatic comfortable insole (Art. no.: 94907-0)

Sustainability:

- midsole, insole and removable insole made wholly or partly from recycled materials
- free from harmful substances in accordance with the uvex restricted substances list



uvex 1 G2	Shoe	Lace-up boot	Shoe	Lace-up boot
Art. no. Width 10	68307	68337	68497	68507
Art. no. Width 11	68308	68338	68498	68508
Art. no. Width 12	68309	68339	68499	68509
Art. no. Width 14	68300	68330	68490	68500
Standard EN ISO 20345:2011	S2 SRC	S2 SRC	S2 SRC	S2 SRC
Standard EN ISO 20345:2022	S2 FO SR	S2 FO SR	S2 FO SR	S2 FO SR
Upper	microvelour	microvelour	microvelour	microvelour
Lining	distance mesh lining	distance mesh lining	distance mesh lining	distance mesh lining
Fastening	elastic laces	shoe laces	elastic laces	shoe laces
Sizes	35 to 52	35 to 52	35 to 52	35 to 52
Order unit	PR	PR	PR	PR

uvex

uvex 1 sport – Winners at work



Designed for Individuals

Website



Sporty.
Premium wearer comfort and a sporty look.



Breathable.
Climate-optimised upper materials.



Lightweight. Ergonomic.
Slip-resistant dual-density polyurethane sole

Safety Footwear

uvex 1 sport



S1P | 65941 | **S1** | 65947
 65942 | 65948
 65943 | 65949
 65944 | 65940



65987
 65988
 65989
 65980



65961
 65962
 65963
 65964



uvex 1 sport · Shoe S1 · Shoe S1 P/S1 PL · Shoe S3L

Sporty design meets sophisticated functionality: The uvex 1 sport is a youthful and stylish shoe that also offers first-class wearer comfort. Thanks to its low weight, climate-optimised high-tech materials and ergonomic outsole, the uvex 1 sport is the ideal footwear for the working day and beyond.

Features:

- shock-absorbing PU midsole
- PU outsole
- 100% metal-free protective toe cap
- flexible textile penetration resistance (65941-4, 65961-4)
- lightweight and breathable microvelour upper (6596)
- lightweight and breathable textile upper (6598, 6594)

- TPU scuffcap
- breathable distance mesh lining
- ESD certified
- sizes 35 to 40 produced using a womens' last
- metal-free
- suitable for people allergic to chrome
- removable antistatic comfortable insole (Art. no.: 95797-0)

Sustainability:

- insole and heel cap made wholly or partly from recycled materials
- free from harmful substances in accordance with the uvex restricted substances list



uvex 1 sport	Shoe	Shoe	Shoe	Shoe
Art. no. Width 10	65941	65947	65987	65961
Art. no. Width 11	65942	65948	65988	65962
Art. no. Width 12	65943	65949	65989	65963
Art. no. Width 14	65944	65940	65980	65964
Standard EN ISO 20345:2011	S1 P SRC	S1 SRC	S1 SRC	S3 SRC
Standard EN ISO 20345:2022	S1 PL FO SC SR	S1 FO SC SR	S1 FO SC SR	S3L FO SC SR
Upper	textile	textile	textile	microvelour
Lining	distance mesh lining	distance mesh lining	distance mesh lining	distance mesh lining
Fastening	shoe laces	shoe laces	shoe laces	shoe laces
Sizes	35 to 52	35 to 52	35 to 52	35 to 52
Order unit	PR	PR	PR	PR

Safety Footwear

uvex 1 sport



65901
65902
65903
65904



65921
65922
65923
65924



uvex 1 sport · Shoe S1 PL/S3L

Features:

- shock-absorbing PU midsole
- PU outsole
- 100% metal-free protective toe cap
- flexible textile penetration resistance
- lightweight and breathable microvelour upper (6592)
- lightweight and breathable textile upper (6590)
- TPU scuffcap
- breathable distance mesh lining
- ESD certified

- sizes 35 to 40 produced using a womens' last
- metal-free
- suitable for people allergic to chrome
- removable antistatic comfortable insole (Art. no.: 95797-0)

Sustainability:

- insole and heel cap made wholly or partly from recycled materials
- free from harmful substances in accordance with the uvex restricted substances list

uvex 1 sport	Shoe	Shoe
Art. no. Width 10	65901	65921
Art. no. Width 11	65902	65922
Art. no. Width 12	65903	65923
Art. no. Width 14	65904	65924
Standard EN ISO 20345:2011	S1 P SRC	S3 SRC
Standard EN ISO 20345:2022	S1 PL FO SC SR	S3L FO SC SR
Upper	textile	microvelour
Lining	distance mesh lining	distance mesh lining
Fastening	shoe laces	shoe laces
Sizes	35 to 52	35 to 52
Order unit	PR	PR

Safety Footwear
uvex 1 sport white



65837
65838
65839

65807
65808
65809

65817
65818
65819

65821
65822
65823



uvex 1 sport white · Shoe S1/S2/S3L

The uvex 1 sport white safety shoe line combines a sporty design, optimal comfort and sophisticated functionality for working in areas where hygiene is important or foodstuffs are handled. The almost seamless upper finish prevents unwanted contaminants from getting inside the shoe when working in sensitive hygienic areas. The work shoes and removable comfortable climatic insoles can be washed at 30°C. uvex 1 sport white – pure sporty comfort for areas where hygiene is important, clean room applications, the food industry, the pharmaceutical industry, industrial kitchens and hospitality.

Features:

- shock-absorbing PU midsole
- PU outsole
- 100% metal-free protective toe cap

- flexible textile penetration resistance (6582)
- hydrophobic microfibre upper
- breathable distance mesh lining
- ESD certified
- dust tongue (6582)
- sizes 35 to 40 produced using a womens' last
- metal-free
- suitable for people allergic to chrome
- removable antistatic comfortable insole (Art. no.: 95797-0)

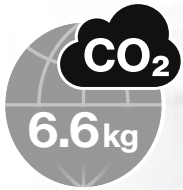
Sustainability:

- insole and heel cap made wholly or partly from recycled materials
- free from harmful substances in accordance with the uvex restricted substances list

uvex 1 sport white	Shoe	Shoe	Shoe	Shoe
Art. no. Width 10	65837	65807	65817	65821
Art. no. Width 11	65838	65808	65818	65822
Art. no. Width 12	65839	65809	65819	65823
Art. no. Width 14	-	-	-	-
Standard EN ISO 20345:2011	S1 SRC	S2 SRC	S2 SRC	S3 SRC
Standard EN ISO 20345:2022	S1 FO SR	S2 FO SR	S2 FO SR	S3L FO SR
Upper	microfibre	microfibre	microfibre	microfibre
Lining	distance mesh lining	distance mesh lining	distance mesh lining	distance mesh lining
Fastening	plastic closure/hook-and-loop	hook-and-loop fastening	-	shoe laces
Sizes	35 to 52	35 to 52	35 to 52	35 to 52
Order unit	PR	PR	PR	PR

uvex

uvex 1 sport white NC



Date created 01/2023

nrj. style. everyday.



Sporty look



Breathable and liquid-resistant upper



Ergonomic PU outsole with uvex i-PUREnrj midsole



Elastic laces



You can find more information at :
www.uvex-safety.com/uvex1sportwhitenc



Occupational shoes

uvex 1 sport white NC



65707
65708
65709



65717
65718
65719



65727
65728
65729

clima zone i-PUREnrj



uvex 1 sport white NC · Shoe O1/O2

Thanks to its lightweight design, high-tech materials and ergonomically designed outsole, the uvex 1 sport white NC is the ideal companion for the working day and beyond. The hydrophobic upper ensures optimised climate control and reliably protects the wearer against liquids and other contaminants.

Features:

- uvex i-PUREnrj midsole with shock-absorption and energy-return features
- PU outsole
- hydrophobic microfibre upper (6571, 6572)
- lightweight and breathable textile upper (6570)
- TPU scuffcap (6570)
- breathable distance mesh lining

- ESD certified
- dust tongue (6572)
- sizes 35 to 40 produced using a womens' last
- metal-free (Art. no.: 6571 only)
- suitable for people allergic to chrome
- removable antistatic comfortable insole (Art. no.: 95177-9)

Sustainability:

- insole, removable insole and heel cap made wholly or partly from recycled materials
- free from harmful substances in accordance with the uvex restricted substances list

uvex 1 sport white NC	Shoe	Shoe	Shoe
Art. no. Width 10	65707	65717	65727
Art. no. Width 11	65708	65718	65728
Art. no. Width 12	65709	65719	65729
Standard EN ISO 20347:2012	O1 FO SRC	O2 FO SRC	O2 FO SRC
Standard EN ISO 20347:2022	O1 FO SC SR	O2 FO SR	O2 FO SR
Upper	textile	microfibre	microfibre
Lining	distance mesh lining	distance mesh lining	distance mesh lining
Fastening	elastic laces	-	elastic laces
Sizes	35 to 52	35 to 52	35 to 52
Order unit	PR	PR	PR

Occupational shoes

uvex 1 sport NC



65937
65938
65939



uvex 1 sport NC - Shoe O1

Features:

- shock-absorbing PU midsole
- PU outsole
- lightweight and breathable textile upper
- TPU scuffcap
- breathable distance mesh lining
- ESD certified
- sizes 35 to 40 produced using a womens' last
- metal-free

- suitable for people allergic to chrome
- removable antistatic comfortable insole (Art. no.: 95177-9)

Sustainability:

- insole, removable insole and heel cap made wholly or partly from recycled materials
- free from harmful substances in accordance with the uvex restricted substances list

uvex 1 sport NC	Shoe
Art. no. Width 10	65937
Art. no. Width 11	65938
Art. no. Width 12	65939
Standard EN ISO 20347:2012	O1 FO SRC
Standard EN ISO 20347:2022	O1 FO SC SR
Upper	textile
Lining	distance mesh lining
Fastening	shoe laces
Sizes	35 to 52
Order unit	PR

uvex 1 business – the best of both worlds



Highstreet Fashion meets Safety



You can find more information at www.uvex-safety.com/uvex1business



Breathable materials



Extra heel padding for a comfortable fit



Ergonomically designed PU outsole

Safety Footwear
uvex 1 business



84281
84282
84283

84697
84698
84699

84271
84272
84273



uvex 1 business · Shoe S2/S3L · Lace-up boot S3L

Do you need to head straight from the meeting room to the production line? uvex's new line of safety shoes brings together three classic looks from the fashion world – Derby shoes, desert boots and Chelsea boots. uvex 1 business safety shoes can go wherever you go, managing to be stylish and safe at the same time! Their attractive appearance blends seamlessly with smart business and casual attire, while their steel cap provides maximum protection with plenty of toe room. Their first-class wearer comfort never fails to impress, from morning to night.

Features:

- PU outsole
- steel protective toe cap

- flexible textile penetration resistance
- lightweight and breathable microvelour upper (8427, 8428)
- breathable textile lining
- ESD certified
- suitable for people allergic to chrome
- removable antistatic comfortable insole (Art. no.: 95157-9)

Sustainability:

- insole and heel cap made wholly or partly from recycled materials
- free from harmful substances in accordance with the uvex restricted substances list

uvex 1 business	Shoe	Shoe	Lace-up boot
Art. no. Width 10	84697	84281	84271
Art. no. Width 11	84698	84282	84272
Art. no. Width 12	84699	84283	84273
Standard EN ISO 20345:2011	S2 SRC	S3 SRC	S3 SRC
Standard EN ISO 20345:2022	S2 FO SR	S3L FO SR	S3L FO SR
Upper	microvelour	microvelour	microvelour
Lining	textile	textile	textile
Fastening	shoe laces	shoe laces	shoe laces
Sizes	39 to 52	39 to 52	39 to 52
Order unit	PR	PR	PR

Safety Footwear

uvex 1 business



84481
84482
84483



84301
84302
84303



84491
84492
84493



uvex 1 business - Shoe S3L

Features:

- PU outsole
- steel protective toe cap
- flexible textile penetration resistance
- lightweight and breathable microvelour upper (8430)
- hydrophobic leather upper (8448, 8449)
- breathable textile lining
- ESD certified

- suitable for people allergic to chrome (8430)
- removable antistatic comfortable insole (Art. no.: 95157-9)

Sustainability:

- insole and heel cap made wholly or partly from recycled materials
- free from harmful substances in accordance with the uvex restricted substances list



uvex 1 business	Shoe	Shoe	Shoe
Art. no. Width 10	84301	84481	84491
Art. no. Width 11	84302	84482	84492
Art. no. Width 12	84303	84483	84493
Standard EN ISO 20345:2011	S3 SRC	S3 SRC	S3 SRC
Standard EN ISO 20345:2022	S3L FO SR	S3L FO SR	S3L FO SR
Upper	microvelour	water-repellent leather	water-repellent leather
Lining	textile	textile	textile
Fastening	shoe laces	shoe laces	shoe laces
Sizes	39 to 52	39 to 52	39 to 52
Order unit	PR	PR	PR

uvex

uvex 1

redefining performance



100% more shock absorption.
Comfort in 3 dimensions.



Outstanding stability.
Reliable support and safety.



uvex monoskin shaft design.
Pressure-free, comfortable fit.



uvex climazone standard.
Temperature and climate control.

Outstanding flexibility. Optimum wearer comfort.

The ergonomic design of the outsole supports the natural movement and flexibility of the feet

High abrasion-resistant TPU sections

Jointed insert for securely climbing ladders.

High flexibility and optimum torsion

Ergonomic sole design

Slip-resistant profile



Safety Footwear

uvex 1



85427
85428
85429
85420



85437
85438
85439
85430



85467
85468
85469



65657
65658
65659



85477
85478
85479



uvex 1 • Sandal S1 • Perforated shoe S1 • Perforated lace-up boot S1

The uvex 1 safety shoe provides robust protection for light applications. Its ergonomic design and seam-free construction prevent pressure points and provide optimal foot protection. The dual-density polyurethane sole offers both shock absorption and comfort. The timeless design is characterised by clean lines and a simplified look.

Features:

- shock-absorbing PU midsole
- PU outsole
- foamed polyurethane heel basket
- 100% metal-free protective toe cap
- lightweight and breathable microvelour upper

- breathable distance mesh lining
- ESD certified
- sizes 35 to 40 produced using a womens' last
- metal-free (Art. no.: 8542, 8547 only)
- suitable for people allergic to chrome
- removable antistatic comfortable insole (Art. no.: 95347-0)

Sustainability:

- insole and removable insole made wholly or partly from recycled materials
- free from harmful substances in accordance with the uvex restricted substances list



uvex 1	Sandal	Perforated shoe	Perforated shoe	Perforated shoe	Perforated lace-up boot
Art. no. Width 10	85427	85437	85467	65657	85477
Art. no. Width 11	85428	85438	85468	65658	85478
Art. no. Width 12	85429	85439	85469	65659	85479
Art. no. Width 14	85420	85430	-	-	-
Standard EN ISO 20345:2011	S1 SRC	S1 SRC	S1 SRC	S1 SRC	S1 SRC
Standard EN ISO 20345:2022	S1 FO SR	S1 FO SR	S1 FO SR	S1 FO SR	S1 FO SR
Upper	microvelour	microvelour	microvelour	microvelour	microvelour
Lining	distance mesh lining	distance mesh lining	distance mesh lining	distance mesh lining	distance mesh lining
Fastening	hook-and-loop fastening	elastic laces	elastic laces	BOA® Fit System	shoe laces
Sizes	35 to 52	35 to 52	35 to 52	35 to 52	35 to 52
Order unit	PR	PR	PR	PR	PR

You can find more information on uvex medicare on pages 430 to 437

Safety Footwear

uvex 1



85447
85448
85449
85440



65667
65668
65669




85457
85458
85459
85450



uvex 1 • Shoe S2 • Lace-up boot S2

Features:

- shock-absorbing PU midsole
- PU outsole
- foamed polyurethane heel basket
- 100% metal-free protective toe cap
- lightweight and breathable microvelour upper
- breathable distance mesh lining
- ESD certified
- sizes 35 to 40 produced using a womens' last

- metal-free (Art. no.: 8545 only)
- suitable for people allergic to chrome
- removable antistatic comfortable insole (Art. no.: 95347-0)

Sustainability:

- insole and removable insole made wholly or partly from recycled materials
- free from harmful substances in accordance with the uvex restricted substances list

uvex 1	Shoe	Shoe	Lace-up boot
Art. no. Width 10	85447	65667	85457
Art. no. Width 11	85448	65668	85458
Art. no. Width 12	85449	65669	85459
Art. no. Width 14	85440	-	85450
Standard EN ISO 20345:2011	S2 SRC	S2 SRC	S2 SRC
Standard EN ISO 20345:2022	S2 FO SR	S2 FO SR	S2 FO SR
Upper	microvelour	microvelour	microvelour
Lining	distance mesh lining	distance mesh lining	distance mesh lining
Fastening	elastic laces	BOA® Fit System	shoe laces
Sizes	35 to 52	35 to 52	35 to 52
Order unit	PR	PR	PR

You can find more information on uvex medicare on pages 430 to 437

Safety Footwear

uvex 1 ladies



85607
85608



85617
85618



85627
85628



uvex 1 ladies - Sandal S1 - Perforated shoe S1 - Shoe S2

Features:

- shock-absorbing PU midsole
- PU outsole
- foamed polyurethane heel basket
- 100% metal-free protective toe cap
- lightweight and breathable microvelour upper
- breathable distance mesh lining
- ESD certified
- sizes 35 to 40 produced using a womens' last

- metal-free (Art. no.: 8560 only)
- suitable for people allergic to chrome
- removable antistatic comfortable insole (Art. no.: 95347-0)

Sustainability:

- insole and removable insole made wholly or partly from recycled materials
- free from harmful substances in accordance with the uvex restricted substances list



uvex 1	Sandal	Perforated shoe	Shoe
Art. no. Width 10	85607	85617	85627
Art. no. Width 11	85608	85618	85628
Standard EN ISO 20345:2011	S1 SRC	S1 SRC	S2 SRC
Standard EN ISO 20345:2022	S1 FO SR	S1 FO SR	S2 FO SR
Upper	microvelour	microvelour	microvelour
Lining	distance mesh lining	distance mesh lining	distance mesh lining
Fastening	hook-and-loop fastening	elastic laces	elastic laces
Sizes	35 to 52	35 to 52	35 to 52
Order unit	PR	PR	PR

Safety Footwear

uvex 1 x-tended support



85361
85362
85363

85127
85128
85129

85117
85118
85119

85141
85142
85143

85191
85192
85193

65681
65682
65683



clima zone



uvex 1 x-tended support · Sandal S1 PL · Perforated Shoe S1 PL/S1

Features:

- shock-absorbing PU midsole
- PU outsole
- foamed polyurethane scuffcap (8514, 8519, 8536, 6568)
- foamed polyurethane heel basket
- 100% metal-free protective toe cap
- flexible textile penetration resistance (8514, 8519, 8536, 6568)
- lightweight and breathable microvelour upper
- breathable distance mesh lining
- ESD certified

- dust tongue (not 8536)
- sizes 35 to 40 produced using a womens' last
- metal-free (Art. no.: 8536 only)
- suitable for people allergic to chrome
- removable antistatic comfortable insole (Art. no.: 95347-0)

Sustainability:

- insole made wholly or partly from recycled materials
- free from harmful substances in accordance with the uvex restricted substances list

uvex 1 x-tended support	Sandal	Perforated shoe	Perforated shoe	Perforated shoe	Perforated shoe	Perforated shoe
Art. no. Width 10	85361	85127	85117	85141	85191	65681
Art. no. Width 11	85362	85128	85118	85142	85192	65682
Art. no. Width 12	85363	85129	85119	85143	85193	65683
Norm EN ISO 20345:2011	S1 P SRC	S1 SRC	S1 SRC	S1 P SRC	S1 P SRC	S1 P SRC
Norm EN ISO 20345:2022	S1 PL FO SC SR	S1 FO SR	S1 FO SR	S1 PL FO SC SR	S1 PL FO SC SR	S1 PL FO SC SR
Upper	microvelour	microvelour	microvelour	microvelour	microvelour	microvelour
Lining	distance mesh lining	distance mesh lining	distance mesh lining	distance mesh lining	distance mesh lining	distance mesh lining
Fastening	hook-and-loop fastening	elastic laces	elastic laces	elastic laces	elastic laces	BOA® Fit System
Sizes	35 to 52	35 to 52	35 to 52	35 to 52	35 to 52	35 to 52
Bestelleinheit	PR	PR	PR	PR	PR	PR

You can find more information on uvex medicare on pages 430 to 437

Safety Footwear

uvex 1 x-tended support



85161
85162
85163



65671
65672
65673



85171
85172
85173



uvex 1 x-tended support · Shoe S3L · Lace-up boot S3L

Features:

- shock-absorbing PU midsole
- PU outsole
- foamed polyurethane scuffcap
- foamed polyurethane heel basket
- 100% metal-free protective toe cap
- flexible textile penetration resistance
- lightweight and breathable microvelour upper
- breathable distance mesh lining
- ESD certified

- dust tongue
- sizes 35 to 40 produced using a womens' last
- metal-free (Art. no.: 8517 only)
- suitable for people allergic to chrome
- removable antistatic comfortable insole (Art. no.: 95347-0)

Sustainability:

- insole made wholly or partly from recycled materials
- free from harmful substances in accordance with the uvex restricted substances list



uvex 1 x-tended support	Shoe	Shoe	Lace-up boot
Art. no. Width 10	85161	65671	85171
Art. no. Width 11	85162	65672	85172
Art. no. Width 12	85163	65673	85173
Standard EN ISO 20345:2011	S3 SRC	S3 SRC	S3 SRC
Standard EN ISO 20345:2022	S3L FO SC SR	S3L FO SC SR	S3L FO SC SR
Upper	microvelour	microvelour	microvelour
Lining	distance mesh lining	distance mesh lining	distance mesh lining
Fastening	elastic laces	BOA® Fit System	shoe laces
Sizes	35 to 52	35 to 52	35 to 52
Order unit	PR	PR	PR

You can find more information on uvex medicare on pages 430 to 437



ECO Hybrid
Diesel-Elektrisch

Bei Bedienung
von Stoßschalter
auf E26

Safety Footwear

medium areas of application



Pushing the Limits!

Website



Superior performance across all disciplines

The innovative uvex 2 safety shoe series does not shy away from any challenge among medium applications: robust upper materials and a deep sole profile ensure maximum performance in your everyday work. The lightweight design, flexible sole and breathability ensure comfort all day long.



Full sole flexibility



Quick-release laces can be adjusted to fit any foot



Directly moulded PU scuffcap reliably protects the upper



High stability thanks to integrated heel basket



Safety Footwear

uvex 2



65021
65022
65023
65024



65031
65032
65033
65034



uvex 2 · Shoe S3L · Lace-up boot S3L

Features:

- shock-absorbing PU midsole
- PU outsole
- foamed polyurethane scuffcap
- foamed polyurethane heel basket
- 100% metal-free protective toe cap
- flexible textile penetration resistance
- hydrophobic leather upper
- breathable distance mesh lining
- reflective elements

- ESD certified
- dust tongue
- sizes 35 to 40 produced using a womens' last
- metal-free (Art. no.: 6503 only)
- removable antistatic comfortable insole (Art. no.: 95347-0)

Sustainability:

- insole made wholly or partly from recycled materials
- free from harmful substances in accordance with the uvex restricted substances list

uvex 2	Shoe	Lace-up boot
Art. no. Width 10	65021	65031
Art. no. Width 11	65022	65032
Art. no. Width 12	65023	65033
Art. no. Width 14	65024	65034
Standard EN ISO 20345:2011	S3 SRC	S3 SRC
Standard EN ISO 20345:2022	S3L FO SC SR	S3L FO SC SR
Upper	water-repellent, full-grain smooth leather	water-repellent, full-grain smooth leather
Lining	distance mesh lining	distance mesh lining
Fastening	elastic laces	shoe laces
Sizes	35 to 52	35 to 52
Order unit	PR	PR

You can find more information on uvex medicare on pages 430 to 437

Safety Footwear

uvex 2



65001
65002
65003
65004

65011
65012
65013
65014

65081
65082
65083
65084

65091
65092
65093
65094



uvex 2 • Sandal S1 PL • Perforated shoe S1 PL • Shoe S3L • Lace-up boot S3L

Features:

- shock-absorbing PU midsole
- PU outsole
- foamed polyurethane scuffcap
- foamed polyurethane heel basket
- 100% metal-free protective toe cap
- flexible textile penetration resistance
- lightweight and breathable microvelour upper
- breathable distance mesh lining
- reflective elements
- ESD certified

- dust tongue
- sizes 35 to 40 produced using a womens' last
- metal-free (Art. no.: 6500, 6509 only)
- suitable for people allergic to chrome
- removable antistatic comfortable insole (Art. no.: 95347-0)

Sustainability:

- insole made wholly or partly from recycled materials
- free from harmful substances in accordance with the uvex restricted substances list



uvex 2	Sandal	Perforated Shoe	Shoe	Lace-up boot
Art. no. Width 10	65001	65011	65081	65091
Art. no. Width 11	65002	65012	65082	65092
Art. no. Width 12	65003	65013	65083	65093
Art. no. Width 14	65004	65014	65084	65094
Standard EN ISO 20345:2011	S1 P SRC	S1 P SRC	S3 SRC	S3 SRC
Standard EN ISO 20345:2022	S1 PL FO SC SR	S1 PL FO SC SR	S3L FO SC SR	S3L FO SC SR
Upper	microvelour	microvelour	microvelour	microvelour
Lining	distance mesh lining	distance mesh lining	distance mesh lining	distance mesh lining
Fastening	hook-and-loop fastening	elastic laces	elastic laces	shoe laces
Sizes	35 to 52	35 to 52	35 to 52	35 to 52
Order unit	PR	PR	PR	PR

Safety Footwear

uvex 2 MACSOLE®



65221
65222
65223
65224



65311
65312
65313 BOA



65231
65232
65233
65234



65321
65322
65323 BOA



65363 BOA



65303

clima zone



uvex 2 MACSOLE® · Shoe S3L · Lace-up boot S3L

All the advantages of the uvex 2 safety shoe range combined with a MACSOLE® rubber outsole: The uvex 2 MACSOLE® is characterised by outstanding resistance to heat, chemicals and cuts. In addition, the MACSOLE® rubber sole technology features an unparalleled level of slip resistance, even in cold conditions.

Features:

- shock-absorbing PU midsole
- heat-, chemical- and cut-resistant uvex MACSOLE® rubber outsole
- foamed polyurethane scuffcap
- foamed polyurethane heel basket
- 100% metal-free protective toe cap
- flexible textile penetration resistance
- hydrophobic leather upper

- breathable distance mesh lining (6522, 6523, 6531, 6532)
- warm winter lining (6530, 6536)
- reflective elements (6522, 6523, 6530)
- ESD certified
- dust tongue
- sizes 35 to 40 produced using a womens' last
- metal-free (Art. no.: 6523, 6530 only)
- removable antistatic comfortable insole (Art. no.: 95347-0)

Sustainability:

- insole made wholly or partly from recycled materials
- free from harmful substances in accordance with the uvex restricted substances list

uvex 2 MACSOLE®	Shoe	Shoe	Lace-up boot	Lace-up boot	Winter lace-up boot	Winter lace-up boot
Art. no. Width 10	65221	65311	65231	65321	-	-
Art. no. Width 11	65222	65312	65232	65322	-	-
Art. no. Width 12	65223	65313	65233	65323	65363	65303
Art. no. Width 14	65224	-	65234	-	-	-
Standard EN ISO 20345:2011	S3 HI HRO SRC	S3 HI HRO SRC	S3 HI HRO SRC	S3 HI HRO SRC	S3 CI HI HRO SRC	S3 CI HI HRO SRC
Standard EN ISO 20345:2022	S3L FO HI HRO SC SR	S3L FO HI HRO SC SR	S3L FO HI HRO SC SR	S3L FO HI HRO SC SR	S3L FO CI HI HRO SC SR	S3L FO CI HI HRO SC SR
Upper	water-repellent, full-grain smooth leather	water-repellent, full-grain smooth leather	water-repellent, full-grain smooth leather	water-repellent, full-grain smooth leather	water-repellent, full-grain smooth leather	water-repellent, full-grain smooth leather
Lining	distance mesh lining	distance mesh lining	distance mesh lining	distance mesh lining	distance mesh lining	distance mesh lining
Fastening	elastic laces	BOA® Fit System	shoe laces	BOA® Fit System	BOA® Fit System	shoe laces
Sizes	35 to 52	35 to 52	35 to 52	35 to 52	35 to 52	35 to 52
Order unit	PR	PR	PR	PR	PR	PR

You can find more information on uvex medicare on pages 430 to 437

Safety Footwear
uvex 2 MACSOLE®



65241
65242
65243

65251
65252
65253

65281
65282
65283
65284

65291
65292
65293
65294

sympatex®

sympatex®

clima zone



uvex 2 MACSOLE® · Shoe S7L/S3L · Lace-up boot S7L/S3L

Features:

- shock-absorbing PU midsole
- heat-, chemical- and cut-resistant uvex MACSOLE® rubber outsole
- foamed polyurethane scuffcap
- foamed polyurethane heel basket
- 100% metal-free protective toe cap
- flexible textile penetration resistance
- lightweight and breathable microvelour upper
- breathable distance mesh lining (6528, 6529)
- waterproof sympatex® lining (6524, 6525)
- reflective elements
- ESD certified

• dust tongue

- sizes 35 to 40 produced using a womens' last
- metal-free (Art. no.: 6528, 6529 only)
- suitable for people allergic to chrome
- removable antistatic comfortable insole (Art. no.: 95347-0)

Sustainability:

- insole made wholly or partly from recycled materials
- free from harmful substances in accordance with the uvex restricted substances list



uvex 2 STX MACSOLE®	Shoe	Lace-up boot	Shoe	Lace-up boot
Art.-Nr. Weite 10	65241	65251	65281	65291
Art.-Nr. Weite 11	65242	65252	65282	65292
Art.-Nr. Weite 12	65243	65253	65283	65293
Art.-Nr. Weite 14	-	-	65284	65294
Norm EN ISO 20345:2011	S3 WR HI HRO SRC	S3 WR HI HRO SRC	S3 HI HRO SRC	S3 HI HRO SRC
Norm EN ISO 20345:2022	S7L FO HI HRO SC SR	S7L FO HI HRO SC SR	S3L FO HI HRO SC SR	S3L FO HI HRO SC SR
Upper	microvelour	microvelour	microvelour	microvelour
Lining	sympatex® laminate	sympatex® laminate	distance mesh lining	distance mesh lining
Fastening	elastic laces	shoe laces	elastic laces	shoe laces
Sizes	35 to 52	35 to 52	35 to 52	35 to 52
Order unit	PR	PR	PR	PR

You can find more information on uvex medicare on pages 430 to 437

uvex

uvex 2 construction



The essential allrounder



► uvex recommends footwear with steel midsoles for demanding applications such as construction and construction-related industries.



uvex waterstop technology
Reliable protection against water penetration for four times longer



Stability and ankle protection
Anatomically shaped heel basket
Protection against twisted ankles on uneven surfaces



Increased visibility
Reflective side strips
Increased visibility in many work environments



Safe slip resistance
Deep sole tread
Reliable slip resistance and grip

Safety Footwear

uvex 2 construction



uvex 2 construction · Lace-up boot S3

The new uvex 2 construction was developed to meet the specific challenges of the construction industry. The construction and engineering industries really put workers and their footwear to the test. In addition to high mechanical stress, extreme weather conditions are often a factor too. Thanks to their intelligent design and innovative technologies, the uvex 2 construction models offer reliable protection, stability and exceptional comfort.

Features:

- shock-absorbing PU midsole
- PU outsole
- foamed polyurethane scuffcap
- foamed polyurethane heel basket
- 100% metal-free protective toe cap

- steel penetration resistance
- water-resistant uvex waterstop leather upper
- breathable distance mesh lining
- reflective elements
- dust tongue
- sizes 35 to 40 produced using a womens' last
- removable antistatic comfortable insole (Art. no.: 95347-0)

Sustainability:

- insole and removable insole made wholly or partly from recycled materials
- free from harmful substances in accordance with the uvex restricted substances list



uvex 2 construction	Lace-up boot	Lace-up boot	Lace-up boot
Art. no. Width 10	65101	65121	65131
Art. no. Width 11	65102	65122	65132
Art. no. Width 12	65103	65123	65133
Standard EN ISO 20345:2011	S3 SRC	S3 SRC	S3 SRC
Standard EN ISO 20345:2022	S3 FO SC SR	S3 FO SC SR	S3 FO SC SR
Upper	water repellent leather	water repellent leather	water repellent leather
Lining	textile	textile	textile
Fastening	shoe laces	shoe laces	shoe laces
Sizes	35 to 52	35 to 52	35 to 52
Order unit	PR	PR	PR

uvex

uvex 2 xenova®

uvex 2 xenova® Trend-setting all-rounder



You can find more information at www.uvex-safety.com/uvex2xenova



Metal-free protective toe cap and optional metal-free penetration resistance



Breathable upper



Lightweight and robust dual-density polyurethane sole

Safety Footwear

uvex 2 xenova®



S1 P | 95531 | **S1** | 95537
 95532 | 95538
 95533 | 95539

95547
 95548
 95549

95581
 95582
 95583



95577
 95578
 95579

clima zone



uvex 2 xenova® · Sandal S1 PL/S1 · Perforated shoe S1/S1 PL · Shoe S2

Improved comfort, guaranteed protection and an attractive design: All of this is offered by the new and completely metal-free uvex 2 xenova® safety shoes. An improved fit, lighter weight and optimum shock absorption, breathability and padding significantly increase wearer comfort. The combination of protection, style and comfort makes the new uvex 2 xenova® a popular all-rounder for indoor and outdoor work, for example in mechanical and plant engineering, metalworking or handicraft work.

Features:

- shock-absorbing PU midsole
- PU outsole
- 100% metal-free protective toe cap
- flexible textile penetration resistance (95531-3, 9558)
- lightweight and breathable microvelour upper

- breathable distance mesh lining
- reflective elements
- ESD certified
- dust tongue (9554, 9557, 9558)
- sizes 38 to 40 produced using a womens' last
- metal-free (Art. no.: 9553, 9554, 9557 only)
- suitable for people allergic to chrome
- removable antistatic comfortable insole (Art. no.: 95347-0)

Sustainability:

- insole and heel cap made wholly or partly from recycled materials
- free from harmful substances in accordance with the uvex restricted substances list



uvex 2 xenova®	Sandal	Sandal	Perforated shoe	Perforated shoe	Shoe
Art. no. Width 10	95531	95537	95547	95581	95577
Art. no. Width 11	95532	95538	95548	95582	95578
Art. no. Width 12	95533	95539	95549	95583	95579
Standard EN ISO 20345:2011	S1 P SRC	S1 SRC	S1 SRC	S1 P SRC	S2 SRC
Standard EN ISO 20345:2022	S1 PL FO SR	S1 FO SR	S1 FO SR	S1 PL FO SR	S2 FO SR
Upper	microvelour	microvelour	microvelour	microvelour	microvelour
Lining	distance mesh lining	distance mesh lining	distance mesh lining	distance mesh lining	distance mesh lining
Fastening	hook-and-loop fastening	hook-and-loop fastening	shoe laces	BOA® Fit System	shoe laces
Sizes	38 to 52	38 to 52	38 to 52	38 to 52	38 to 52
Order unit	PR	PR	PR	PR	PR

Safety Footwear

uvex 2 xenova®



95557
95558
95559



95551
95552
95553



95561
95562
95563



95691
95692
95693 **BOA**



uvex 2 xenova® · Shoe S2/S3L · Lace-up boot S3L

Features:

- shock-absorbing PU midsole
- PU outsole
- 100% metal-free protective toe cap
- flexible textile penetration resistance
- hydrophobic leather upper
- scuffcap with PU coating (95551-3, 9556, 9569)
- breathable distance mesh lining
- reflective elements
- ESD certified

dust tongue

- sizes 38 to 40 produced using a womens' last
- metal-free (Art. no.: 9555, 9556 only)
- removable antistatic comfortable insole (Art. no.: 95347-0)

Sustainability:

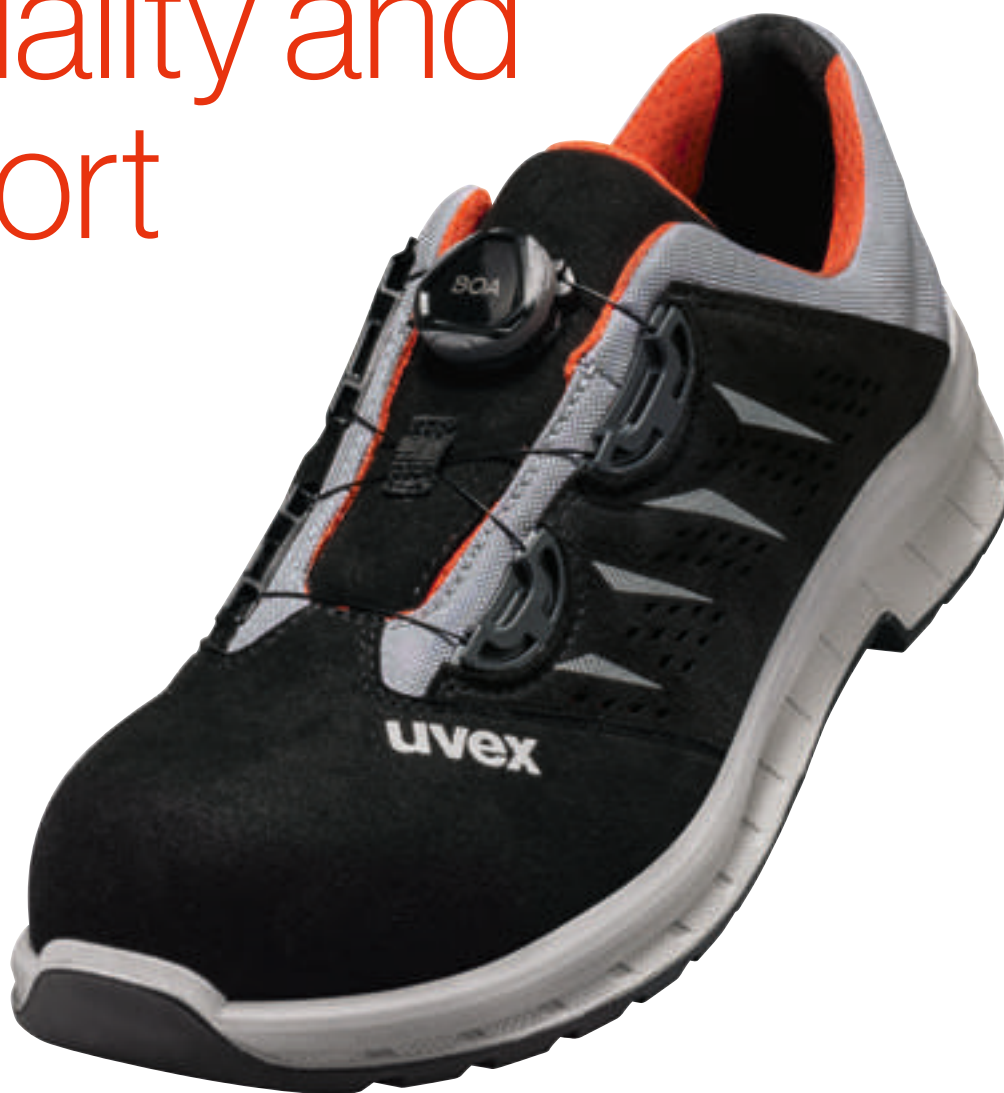
- insole and heel cap made wholly or partly from recycled materials
- free from harmful substances in accordance with the uvex restricted substances list

uvex 2 xenova®	Shoe	Shoe	Lace-up boot	Lace-up boot
Art. no. Width 10	95557	95551	95561	95691
Art. no. Width 11	95558	95552	95562	95692
Art. no. Width 12	95559	95553	95563	95693
Standard EN ISO 20345:2011	S2 SRC	S3 SRC	S3 SRC	S3 SRC
Standard EN ISO 20345:2022	S2 FO SR	S3L FO SC SR	S3L FO SC SR	S3L FO SC SR
Upper	water-repellent, full-grain leather	water-repellent, full-grain leather	water-repellent, full-grain leather	water-repellent, full-grain leather
Lining	distance mesh lining	distance mesh lining	distance mesh lining	distance mesh lining
Fastening	shoe laces	shoe laces	shoe laces	BOA® Fit System
Sizes	38 to 52	38 to 52	38 to 52	38 to 52
Order unit	PR	PR	PR	PR

You can find more information on uvex medicare on pages 430 to 437

Safety and comfort redefined – uvex 2 trend

Affordable Quality and Comfort



You can find more information at www.uvex-safety.com/uvex2trend



Lightweight and robust dual-density polyurethane sole



Breathable upper



Steel protective toe cap and optional steel penetration resistance*



Reliable ankle protection thanks to integrated heel cap

* on selected models

Safety Footwear
uvex 2 trend



S1 P | 69361
69362
69363

S1 | 69367
69368
69369

69061
69062
69063

69381
69382
69383



69081
69082
69083



clima zone



uvex 2 trend · Sandal S1 P/S1 · Perforated shoe S1 P

Whether in the assembly hall or on the production line, indoors or outdoors: uvex 2 trend safety shoes are equipped with numerous proven technologies in a modern entry-level product line for medium applications. The product family relies on steel protective elements. In addition, the uvex anti-twist heel cap provides greater protection against twisted ankles, while the polyurethane outsole ensures wearer comfort. The result: maximum comfort and reliable safety for your everyday work.

Features:

- shock-absorbing PU midsole
- PU outsole
- steel protective toe cap
- steel penetration resistance (6906, 69361-3, 6908, 6938)

- lightweight and breathable microvelour upper
- breathable distance mesh lining
- reflective elements
- ESD certified
- dust tongue (6908, 6938)
- sizes 36 to 40 produced using a womens' last
- suitable for people allergic to chrome
- removable antistatic comfortable insole (Art. no.: 95187-9)

Sustainability:

- insole and heel cap made wholly or partly from recycled materials
- free from harmful substances in accordance with the uvex restricted substances list

uvex 2 trend	Sandal	Sandal	Sandal	Perforated shoe	Perforated shoe
Art. no. Width 10	69361	69367	69061	69381	69081
Art. no. Width 11	69362	69368	69062	69382	69082
Art. no. Width 12	69363	69369	69063	69383	69083
Standard EN ISO 20345:2011	S1 P SRC	S1 SRC	S1 P SRC	S1 P SRC	S1 P SRC
Standard EN ISO 20345:2022	S1 P FO SR	S1 FO SR	S1 P FO SR	S1 P FO SR	S1 P FO SR
Upper	microvelour	microvelour	microvelour	microvelour	microvelour
Lining	distance mesh lining	distance mesh lining	distance mesh lining	distance mesh lining	distance mesh lining
Fastening	hook-and-loop fastening	hook-and-loop fastening	hook-and-loop fastening	BOA® Fit System	BOA® Fit System
Sizes	36 to 52	36 to 52	38 to 52	36 to 52	38 to 52
Order unit	PR	PR	PR	PR	PR

You can find more information on uvex medicare on pages 430 to 437

Safety Footwear

uvex 2 trend



S1 P | 69371
69372
69373

S1 | 69377
69378
69379

69477
69478
69479

69397
69398
69399

69497
69498
69499



uvex 2 trend · Perforated shoe S1 P/S1 · Shoe S2

Features:

- shock-absorbing PU midsole
- PU outsole
- steel protective toe cap
- steel penetration resistance (69371-3)
- lightweight and breathable microvelour upper
- breathable distance mesh lining
- reflective elements
- ESD certified

- dust tongue
- sizes 36 to 40 produced using a womens' last
- suitable for people allergic to chrome
- removable antistatic comfortable insole (Art. no.: 95187-9)

Sustainability:

- insole and heel cap made wholly or partly from recycled materials
- free from harmful substances in accordance with the uvex restricted substances list



uvex 2 trend	Perforated shoe	Perforated shoe	Perforated shoe	Shoe	Shoe
Art. no. Width 10	69371	69377	69477	69397	69497
Art. no. Width 11	69372	69378	69478	69398	69498
Art. no. Width 12	69373	69379	69479	69399	69499
Standard EN ISO 20345:2011	S1 P SRC	S1 SRC	S1 SRC	S2 SRC	S2 SRC
Standard EN ISO 20345:2022	S1 P FO SR	S1 FO SR	S1 FO SR	S2 FO SR	S2 FO SR
Upper	microvelour	microvelour	microvelour	microvelour	microvelour
Lining	distance mesh lining	distance mesh lining	distance mesh lining	distance mesh lining	distance mesh lining
Fastening	shoe laces	shoe laces	shoe laces	shoe laces	shoe laces
Sizes	36 to 52	36 to 52	38 to 52	36 to 52	38 to 52
Order unit	PR	PR	PR	PR	PR

Safety Footwear

uvex 2 trend



69347
69348
69349

69341
69342
69343

69357
69358
69359

69351
69352
69353



uvex 2 trend · Shoe S2/S3 · Lace-up boot S2/S3

Features:

- shock-absorbing PU midsole
- PU outsole
- foamed polyurethane scuffcap
- steel protective toe cap
- steel penetration resistance (69341-3, 69351-3)
- hydrophobic leather upper
- breathable distance mesh lining
- reflective elements

- ESD certified
- dust tongue
- sizes 36 to 40 produced using a womens' last
- removable antistatic comfortable insole (Art. no.: 95187-9)

Sustainability:

- insole and heel cap made wholly or partly from recycled materials
- free from harmful substances in accordance with the uvex restricted substances list

uvex 2 trend	Shoe	Shoe	Lace-up boot	Lace-up boot
Art. no. Width 10	69347	69341	69357	69351
Art. no. Width 11	69348	69342	69358	69352
Art. no. Width 12	69349	69343	69359	69353
Standard EN ISO 20345:2011	S2 SRC	S3 SRC	S2 SRC	S3 SRC
Standard EN ISO 20345:2022	S2 FO SR	S3 FO SR	S2 FO SR	S3 FO SR
Upper	full-grain soft leather	full-grain soft leather	full-grain soft leather	full-grain soft leather
Lining	distance mesh lining	distance mesh lining	distance mesh lining	distance mesh lining
Fastening	shoe laces	shoe laces	shoe laces	shoe laces
Sizes	36 to 52	36 to 52	36 to 52	36 to 52
Order unit	PR	PR	PR	PR

You can find more information on uvex medicare on pages 430 to 437



Safety Footwear

heavy areas of application

uvex

uvex 3 – safety and comfort made easy.

**Hard work.
Easy going.**



reddot winner 2022



uvex anklepro
Protection against impacts in the ankle area



uvex lancelock
Optimised lacing for increased stability with locking lace hooks



uvex waterstop Technologie
Reliable protection against water penetration for four times longer

Safety Footwear

uvex 3



68711
68712
68713



68741
68742
68743



reddot winner 2022



bionom x clima zone i-PUREnrj



uvex 3 · Shoe S3L · Lace-up boot S3L

The uvex 3 is the ideal companion for heavy-duty applications. It combines the necessary robustness with a sporty and dynamic design. The uvex bionom x design ensures that upper and outsole offer optimum wearer comfort. Additional features also provide outstanding protection.

Features:

- uvex i-PUREnrj midsole with shock-absorption and energy-return features
- PU outsole
- foamed polyurethane scuffcap
- foamed polyurethane heel basket
- 100% metal-free protective toe cap
- flexible textile penetration resistance
- water-resistant uvex waterstop leather upper

- breathable textile lining
- uvex anklepro ankle protection (6874)
- uvex lacelock fastening hook (6874)
- reflective elements
- ESD certified
- dust tongue
- sizes 36 to 40 produced using a womens' last
- removable antistatic comfortable insole (Art. no.: 86937-9)

Sustainability:

- insole made wholly or partly from recycled materials
- free from harmful substances in accordance with the uvex restricted substances list

uvex 3	Shoe	Lace-up boot
Art. no. Width 10	68711	68741
Art. no. Width 11	68712	68742
Art. no. Width 12	68713	68743
Standard EN ISO 20345:2011	-	S3 CI SRC
Standard EN ISO 20345:2022	S3L FO CI SC SR	S3L FO CI SC SR
Upper	water repellent leather	water repellent leather
Lining	textile	textile
Fastening	shoe laces	shoe laces
Sizes	36 to 52	36 to 52
Order unit	PR	PR

Safety Footwear

uvex 3



68721
68722
68723

68731
68732
68733

68751
68752
68753



reddot winner 2022

bionom x clima zone i-PUREnrj



uvex 3 · Lace-up boot S3 · High lace-up boot S3

Features:

- uvex i-PUREnrj midsole with shock-absorption and energy-return features
- PU outsole
- foamed polyurethane scuffcap
- foamed polyurethane heel basket
- 100% metal-free protective toe cap
- steel penetration resistance
- water-resistant uvex waterstop leather upper
- breathable textile lining
- uvex anklepro ankle protection
- uvex lacelock fastening hook
- reflective elements
- ESD certified

- dust tongue
- sizes 36 to 40 produced using a womens' last
- removable antistatic comfortable insole (Art. no.: 86937-9)

Sustainability:

- insole and removable insole made wholly or partly from recycled materials
- free from harmful substances in accordance with the uvex restricted substances list

► **uvex recommends footwear with steel midsoles for demanding applications such as construction and construction-related industries.**

uvex 3	Lace-up boot	Lace-up boot	High lace-up boot
Art. no. Width 10	68721	68731	68751
Art. no. Width 11	68722	68732	68752
Art. no. Width 12	68723	68733	68753
Standard EN ISO 20345:2011	S3 CI SRC	S3 CI SRC	-
Standard EN ISO 20345:2022	S3 FO CI SC SR	S3 FO CI SC SR	S3 FO CI SC SR
Upper	water repellent leather	water repellent leather	water repellent leather
Lining	textile	textile	textile
Fastening	shoe laces	shoe laces	shoe laces
Sizes	36 to 52	36 to 52	36 to 52
Order unit	PR	PR	PR

Safety Footwear

uvex 3



68771
68772
68773



68781
68782
68783

bionom x clima zone i-PUREnrj



uvex 3 · High lace-up boot S3L CI · High zip-up boot S3L CI

Features:

- uvex i-PUREnrj midsole with shock-absorption and energy-return features
- PU outsole
- foamed polyurethane scuffcap
- foamed polyurethane heel basket
- 100% metal-free protective toe cap
- flexible textile penetration resistance
- water-resistant uvex waterstop leather upper
- warm winter lining
- uvex anklepro ankle protection (6877)

- uvex lacelock fastening hook (6877)

- reflective elements
- ESD certified
- dust tongue (6877)
- sizes 36 to 40 produced using a womens' last
- removable antistatic comfortable insole (Art. no.: 86937-9)

Sustainability:

- removable insole made wholly or partly from recycled materials
- free from harmful substances in accordance with the uvex restricted substances list



uvex 3	High lace-up boot	High zip-up boot
Art. no. Width 10	68771	68781
Art. no. Width 11	68772	68782
Art. no. Width 12	68773	68783
Standard EN ISO 20345:2011	-	-
Standard EN ISO 20345:2022	S3L FO CI SC SR	S3L FO CI SC SR
Upper	water repellent leather	water repellent leather
Lining	warm lining	warm lining
Fastening	shoe laces	zip
Sizes	36 to 52	36 to 52
Order unit	PR	PR

uvex

uvex 3 Macsole®

Sustainable rubber technology



planet up to
30%
recycled rubber



#Weave
SEE THE LIGHTER SIDE

10%
less weight



Contact heat resistant short-term up to 300° Celsius and heat-insulating



Flexible, even at low temperatures



Extremely slip-resistant, cut-resistant and largely chemical-resistant

Safety Footwear

uvex 3 MACSOLE®



68601
68602
68603

68611
68612
68613

68621
68622
68623 **sympatex®**

68631
68632
68633 **sympatex®**

bionom x clima zone i-PUREnrj



uvex 3 MACSOLE® - Shoe S3/S7 · Lace-up boot S3/S7

The uvex 3, but even more robust. The MACSOLE® rubber outsole provides even stronger support for heavy-duty applications, making it particularly resistant to heat, chemicals and cuts. In addition, the MACSOLE® rubber sole technology features an unparalleled level of slip resistance, even in cold conditions.

Features:

- uvex i-PUREnrj midsole with shock-absorption and energy-return features
- heat-, chemical- and cut-resistant uvex MACSOLE® rubber outsole
- foamed polyurethane scuffcap
- foamed polyurethane heel basket
- 100% metal-free protective toe cap
- steel penetration resistance
- hydrophobic leather upper (6862, 6863)
- water-resistant uvex waterstop leather upper (6860, 6861)

- waterproof Sympatex lining (6862, 6863)
- breathable textile lining (6860, 6861)
- uvex anklepro ankle protection (6861, 6863)
- uvex lacelock fastening hook (6861, 6863)
- reflective elements
- ESD certified
- dust tongue
- sizes 36 to 40 produced using a womens' last
- removable antistatic comfortable insole (Art. no.: 86937-9)

Sustainability:

- insole and removable insole made wholly or partly from recycled materials
- free from harmful substances in accordance with the uvex restricted substances list



uvex 3 MACSOLE®	Shoe	Lace-up boot	Shoe	Lace-up boot
Art. no. Width 10	68601	68611	68621	68631
Art. no. Width 11	68602	68612	68622	68632
Art. no. Width 12	68603	68613	68623	68633
Standard EN ISO 20345:2011	-	-	-	-
Standard EN ISO 20345:2022	S3 FO CI HI HRO SC SR	S3 FO CI HI HRO SC SR	S7 FO CI HI HRO SC SR	S7 FO CI HI HRO SC SR
Upper	water repellent leather	water repellent leather	water repellent leather	water repellent leather
Lining	textile	textile	sympatex® laminate	sympatex® laminate
Fastening	shoe laces	shoe laces	shoe laces	shoe laces
Sizes	36 to 52	36 to 52	36 to 52	36 to 52
Order unit	PR	PR	PR	PR

You can find more information on uvex medicare on pages 430 to 437

uvex 3 asphaltpro

Reliable protection for extremely challenging applications



Reflective side strips
for increased visibility



Outsole with flat tread
to avoid tread marks



Heat-insulating insole
thanks to film in the forefoot area



Anatomically shaped heel basket
for stability and ankle protection



Heat resistance +300 °C (HRO)

Heat resistance testet at +300 °C (HRO)
Heat insulation testet at +150 °C (HI)
and at +250 °C (HI-3 according to standard
DIN EN ISO 20349-1 passed, not certifiable)



Upper with uvex waterstop technology and reflective elements

Heat-insulating insole

Heat-insulating fleece on the insole

Penetration-resistant insert (steel)

Heat-insulating fleece

Midsole core for optimal shock absorption (PU wedge)

Heat-resistant MACSOLE® rubber outsole

Safety Footwear

uvex 3 asphaltpro



65591
65592
65593

clima zone



uvex 3 asphaltpro · Lace-up boot S3 HI HRO

Designed for the extreme challenges of asphalt work with really high temperatures. The highlight is the sole made from special heat-insulating and heat-resistant materials. The high-quality leather upper with uvex waterstop technology and steel sole for perforation protection provide reliable protection against external influences. Its ergonomic fit, lightweight design and optimum climate characteristics make it the perfect partner for road construction work.

Features:

- shock-absorbing PU midsole
- heat-, chemical- and cut-resistant uvex MACSOLE® rubber outsole
- foamed polyurethane heel basket

- 100% metal-free protective toe cap
- steel penetration resistance
- water-resistant uvex waterstop leather upper
- breathable textile lining
- reflective elements
- dust tongue
- removable antistatic comfortable insole (Art. no.: 94597-9)

Sustainability:

- removable insole made wholly or partly from recycled materials
- free from harmful substances in accordance with the uvex restricted substances list



uvex 3 asphaltpro	Lace-up boot
Art. no. Width 10	65591
Art. no. Width 11	65592
Art. no. Width 12	65593
Standard EN ISO 20345:2011	S3 HI HRO SRA
Standard EN ISO 20345:2022	S3 FO HI HRO
Upper	water repellent leather
Lining	textile
Fastening	shoe laces
Sizes	38 to 50
Order unit	PR

You can find more information on uvex medicare on pages 430 to 437

Heckel safety shoes

Performance with style



A brand of the uvex group

Heckel, headquartered in France, has been a specialist in safety footwear since 1970 and is among the pioneers of the industry. Heckel has been part of the uvex group since 2001 and its products are distributed in over 30 countries.

Performance with style

Heckel stands for performance. When wearing Heckel safety shoes, users know they are fully protected and ready for the most extreme conditions. By not compromising on the quality and testing of our products, we guarantee the performance of our safety shoes and the protection of the professionals who wear them. Heckel safety shoes protect against mechanical and chemical risks as well as heat, cold and moisture, while emphasising style.

MACSOLE® technology

Being a true specialist in rubber soles, Heckel has been developing its own technology for more than 20 years: MACSOLE®. Made from an exclusive mixture of nitrile rubbers, MACSOLE® soles offer unrivalled performance in slip resistance, durability and comfort.

MACSOLE® ADVENTURE 3.0

OFF THE
BEATEN TRACK



Resistant and durable
MACSOLE® ADVENTURE 3.0 rubber soles guarantee unrivalled performance in slip resistance and durability and are also resistant to contact heat.



Designed for outdoor use
With a scuffcap made from highly abrasion-resistant rubber and the Agile Ankle Guard support system, these safety shoes are suitable for outdoor work and difficult surfaces.



Comfortable & wear-resistant
The natural elastic properties of rubber combined with innovative MACABSORB technology ensure shock absorption that is 85% higher than the standard for durable wearer comfort.



Safety Footwear



SR

67323



HRO

67313

MACCROSSROAD 3.0 LOW + HIGH S3L FO CI HI HRO SC SR

MACSOLE® ADVENTURE 3.0 rubber **sole** with EVA MACABSORB inserts at the heel and forefoot | liquid-resistant oiled full-grain leather **upper** with Agile Ankle Guard reinforced heel and sides | polyester 3D mesh **lining** | non-metallic **toe cap** | non-metallic **penetration-resistant sole** | **hygienic insole** made from 85% recycled PU foam with shock absorption at the front and heel

Areas of application: heavy application

Removable insole made wholly or partly from recycled materials
Free from harmful substances according to our restricted substances list



	MACCROSSROAD 3.0 LOW	MACCROSSROAD 3.0 HIGH
Art. no. Width 10	67322	67312
Art. no. Width 11	67323	67313
Art. no. Width 12	67324	67314
Standard EN ISO 20345:2011	S3 CI HI HRO SRC	S3 CI HI HRO SRC
Standard EN ISO 20345:2022	S3L FO CI HI HRO SC SR	S3L FO CI HI HRO SC SR
Colours	black, lime	black, lime
Sizes	36 to 48	35 to 51
Weight	650 g	700 g
Order unit	PR	PR

Safety Footwear



67353



67363



67373



MACCROSSROAD 3.0 HIGH META S3L FO CI HI HRO M SC SR + **HIGH BOA** S3L FO CI HI HRO SC SR + **LOW BOA** S3L FO CI HI HRO SC SR



MACSOLE® ADVENTURE 3.0 rubber **sole** with EVA MACABSORB inserts at the heel and forefoot | liquid-resistant oiled full-grain leather **upper** with Agile Ankle Guard reinforced heel and sides | BOA® Fit System easy, quick fastening solution with personalised adjustment (BOA) | D30 100 J energy absorption highly flexible (META) **metatarsal protection** | polyester 3D mesh **lining** | non-metallic **toe cap** | non-metallic **penetration-resistant sole** | **hygienic insole** made from 85% recycled PU foam with shock absorption at the front and heel

Areas of application: heavy application

Removable insole made wholly or partly from recycled materials
Free from harmful substances according to our restricted substances list

	MACCROSSROAD 3.0 HIGH META	MACCROSSROAD 3.0 HIGH BOA	MACCROSSROAD 3.0 LOW BOA
Art. no. Width 10	67352	67362	67372
Art. no. Width 11	67353	67363	67373
Art. no. Width 12	67354	67364	67374
Standard EN ISO 20345:2011	S3 M CI HI HRO SRC	S3 CI HI HRO SRC	S3 CI HI HRO SRC
Standard EN ISO 20345:2022	S3L FO CI HI HRO M SC SR	S3L FO CI HI HRO SC SR	S3L FO CI HI HRO SC SR
Colours	black, lime	black, blue	black, blue
Sizes	36 to 48	36 to 48	36 to 48
Weight	740 g	700 g	670 g
Order unit	PR	PR	PR

Safety Footwear

METAL FREE



67733



67723



FOCUS 2.0 SANDAL + PERFO S1 PL FO SR

double density PU **sole**, excellent levels of grip, shock absorption | ultra-breathable oiled nubuck leather **upper**, large perforations for perfect ventilation, Velcro fastening (SANDAL) | ultra-breathable oiled nubuck perforated leather **upper**, reflective elements, non-metallic eyelets and hooks (PERFO) | 3D polyester mesh **lining** for excellent breathability, quick drying | metal-free **toe cap** | metal-free **penetration-resistant midsole** | anatomically shaped **hygienic insole**, textile top layer and perforations, EVA heel shock absorber

Areas of application: medium applications

Removable insole made wholly or partly from recycled materials.
Free from harmful substances according to our restricted substances list

	FOCUS 2.0 SANDAL	FOCUS 2.0 PERFO
Art. no. Width 11	67733	67723
Standard EN ISO 20345:2011	S1P SRC	S1P SRC
Standard EN ISO 20345:2022	S1 PL FO SR	S1 PL FO SR
Colours	black	black
Sizes	36 to 47	36 to 47
Weight	565 g	575 g
Order unit	PR	PR

Safety Footwear

S3L



67713

FOCUS 2.0 S3 LOW + HIGH S3L FO SR

double density PU **sole**, excellent levels of grip, shock absorption | water-resistant and padded **tongue** with gussets to keep dirt and debris out | water-resistant oiled nubuck leather and textile **upper**, reflective elements, non-metallic eyelets and hooks, padded collar | 3D polyester mesh **lining** for excellent breathability, quick drying | metal-free **toe cap** | metal-free **penetration-resistant midsole** | anatomically shaped **hygienic insole**, textile top layer and perforations, EVA heel shock absorber

Areas of application: medium applications

Removable insole made wholly or partly from recycled materials. Free from harmful substances according to our restricted substances list



67703

	FOCUS 2.0 LOW	FOCUS 2.0 HIGH
Art. no. Width 11	67713	67703
Standard EN ISO 20345:2011	S3 SRC	S3 SRC
Standard EN ISO 20345:2022	S3L FO SR	S3L FO SR
Colours	black	black
Sizes	36 to 47	36 to 47
Weight	570 g	615 g
Order unit	PR	PR

MACSOLE® 1.0 WLD LOW S3 CI HI-1 HRD WG SRC



MACSOLE® 1.0 smooth rubber **sole** | liquid-resistant pigmented full-grain leather **upper** | fire-resistant Kevlar® thread seams, pigmented full-grain leather protective flap, double Velcro® fastening | mesh **lining** | non-metallic **toe cap** | stainless steel **penetration-resistant sole** | **insole** PU insole

Areas of application: welding, steelworking, protection against metal projection

Free from harmful substances according to our restricted substances list



62963

WLD

	MACSOLE® 1.0 WLD LOW
Art. no.	62963
Standard EN ISO 20349-2:2021	S3 CI HI-1 HRD WG SRC
Colours	black
Sizes	38 to 48
Weight	810 g
Order unit	PR



Safety Footwear Accessories · Inlay soles



94908



95798



95178



95158



95188



95348



86938



94598

clima zone

Replacement insoles

- improved full-surface shock absorption
- ultra-breathable, moisture-absorbing and quick-drying materials
- shock absorption zones support natural movement of the foot
- non-irritating, comfortable surface structure
- antistatic properties
- arch support
- washable, hand wash at 30°C

Accessories - Inlay soles	Insole uvex 1 G2, uvex 1 G2 planet	Insole uvex 1 x-craft, uvex 1 sport, uvex 1 sport white	Insole uvex 1 sport NC, uvex 1 sport white NC	Insole uvex 1 business	Insole uvex 2 trend	Insole uvex 1, uvex 2, uvex 2 construction, uvex 2 xenova®	Insole uvex 3, uvex 3 MACSOLE®	Insole uvex 3 asphaltpro
Art. no. Width 10	94907	95797	95177	95157	95187	95347	86937	94597
Art. no. Width 11	94908	95798	95178	95158	95188	95348	86938	94598
Art. no. Width 12	94909	95799	95179	95159	95189	95349	86939	94599
Art. no. Width 14	94900	95790	-	-	-	95340	-	-
Version	for uvex 1 G2, uvex 1 G2 planet	for uvex 1 x-craft, uvex 1 sport, uvex 1 sport white	for uvex 1 sport NC, uvex 1 sport white NC	for uvex 1 business	for uvex 2 trend	for uvex 1, uvex 2, uvex 2 construction, uvex 2 xenova®	for uvex 3, uvex 3 MACSOLE®	for uvex 3 asphaltpro
Sizes	35 to 52	35 to 52	35 to 52	39 to 52	36 to 52	35 to 52	36 to 52	38 to 50
Order unit	PR	PR	PR	PR	PR	PR	PR	PR

Safety Footwear

Accessories · Inlay soles



LOW

Art. no. 95281
Art. no. 95284
Art. no. 95287
Sizes 35 to 52



MEDIUM

Art. no. 95282
Art. no. 95285
Art. no. 95288
Sizes 35 to 52



HIGH

Art. no. 95283
Art. no. 95286
Art. no. 95289
Sizes 35 to 52



clima zone

uvex tune-up comfortable insole

Antistatic insole concept for use in safety footwear. Designed to increase wearer comfort and enhance ergonomics by providing optimum support for the arches of the feet, helping to reduce foot fatigue.

- three different arch support versions: high, medium, low
- very good cushioning for comfort underfoot
- reduces symptoms of fatigue
- prevents pressure points
- non-irritating, comfortable surface structure
- breathable and absorbs moisture
- anti-bacterial
- antistatic
- suitable for ESD footwear
- hand-washable at 30°C
- certified for use in the following uvex safety shoes



Accessories - Inlay soles	uvex tune-up comfortable insole	uvex tune-up comfortable insole	uvex tune-up comfortable insole
Art. no. arch support low	95281	95284	95287
Art. no. arch support medium	95282	95285	95288
Art. no. arch support high	95283	95286	95289
Version certified in accordance with EN ISO 20345 for the safety shoe types	uvex 1, uvex 2, uvex 2 MACSOLE® uvex 2 xenova®	uvex 1 x-craft, uvex 1 sport	uvex 1 G2
Sizes	35 to 52	35 to 52	35 to 52
Order unit	PR	PR	PR

Safety Footwear

uvex care system



uvex nano shoe add on

footwear waterproofing for protection against moisture penetration and stains

The principle

Water-based uvex nano shoe “add on” waterproofing forms a colourless, invisible film on leather and textile surfaces which protects footwear from moisture penetration and water or oil stains. Although the technological expertise owes its origins to chemical nanotechnology, the product contains no actual nano particles. uvex nano shoe ‘add on’ makes footwear surfaces smooth so, that liquids simply run off. It does not alter the look or breathability of the impregnated material, irrespective of whether this is suede,

leather or textile. Contains no aggressive ingredients which might attack footwear surfaces.

How it works

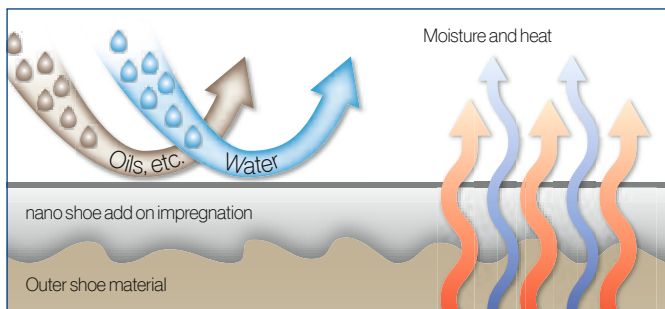
- Protects from moisture penetration:
The speed at which moisture penetrates leather or textile surfaces which have been treated is significantly reduced. Water and oil simply run off.
- Maintains breathability:
uvex nano shoe ‘add on’ waterproofing does not affect the breathability of footwear surface materials.
- Improves cleaning
Footwear surfaces impregnated with uvex nano shoe ‘add on’ can be more easily cleaned, since water and oil stains cannot penetrate deep into the fabric.
- Long-lasting stain prevention:
Regular applications will significantly reduce repeated staining from water or oil-based liquids.

- No change to the look or feel of the surface:
The look or feel of footwear is not altered by the neutral uvex nano shoe ‘add on’ waterproofing. uvex nano shoe ‘add on’ is free from formaldehyde and phenol and contains no nano particles.

Application

- clean leather and textile surfaces thoroughly beforehand
- shake solution before use, then spray onto material to form a thin film over the surface (avoid drips forming)
- if necessary, wipe over excess liquid with a cloth to spread evenly
- leave to dry at room temperature for at least 12 hours
- repeat treatment as above when needed to maintain the effect

The nano shoe add on working principle



uvex nano shoe add on	
Art. no.	9698100
Content	100 ml
Order unit	PC



uvex nano shoe add in:

footwear disinfectant against foot odour and athlete's foot

The principle

uvex nano shoe ‘add in’ uses specially developed technology which releases controlled doses of active ingredients with long-lasting effect. The uvex nano shoe ‘add in’ disinfectant contains antimicrobial and antifungal active ingredients which eliminate bacteria and fungus over the longer term. Although this expertise owes its origins to chemical nanotechnology, the uvex nano shoe

‘add in’ does not contain any actual nano particles: The formula contains only active ingredients which are approved for use for a number of years and can be found in cosmetics (formaldehyde-free, phenol-free).

How it works

- Odour prevention:
Regular application of uvex nano shoe ‘add in’ in new shoes will prevent any build-up of odour from the outset. Unlike deodorants, which simply cover sweaty smells, this product deals with the underlying causes: bacteria.
- Ongoing deodorization:
Application of uvex nano shoe ‘add in’ will return footwear that has already been well worn to odour-neutral conditions.

- Kills fungi:
Filamentous or yeast fungi are among the most common causes of skin diseases (such as athlete's foot) affecting the feet. uvex nano shoe ‘add in’ kills existing fungi and prevents reoccurrence.

Use

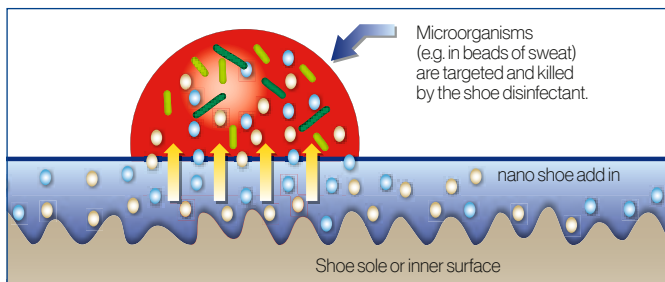
- uvex nano shoe add in is optimised for use in the interior of the shoe. Shake before use. Hold the spray head inside the shoe and spray on approximately five to ten pumps of the uvex nano shoe add in. Only wear shoes that have dried fully. (Allow shoes to dry for at least 15 minutes).

Application

- 1–2 times a week.

The nano shoe add in working principle

Controlled release of germicidal agents to protect against foot odour and athletes foot



uvex nano shoe add in	
Art. no.	9698300
Content	125 ml
Order unit	PC

Safety Footwear

Polymer boot · Accessories



94756



94766



98754

NORA safety boots S5 SRC

General features:

- long PVC safety boot

Protection features:

- free of plasticisers included on the SVHC Candidate List of the REACH Regulation
- resistant to oil, grease, fuel, alkalis, acids and disinfectants
- with steel toecap and midsole
- toe and heel reinforcements plus ankle protection
- antistatic

Comfort features:

- anatomically shaped lasts, prevent foot fatigue
- leg height 33 cm (for size 42 boot)
- long shaft, can be shortened
- anatomically shaped insole
- pull-off aid

uvex tricot liner socks

General features:

- kind to the skin
- extremely high level of moisture absorption
- washable at up to 30 °C
- elastic



NORA safety boots S5 SRC		
Art. no.	94756	94766
Standard EN ISO 20345:2011	S5 SRC	S5 SRC
Standard EN ISO 20345:2022	S5 FO	S5 FO
Upper	PVC	PVC
Sizes	37 to 48	36 to 47
Order unit	PR	PR

uvex tricot liner socks	
Art. no.	98754
Sizes	39/40 to 47/48
Material	70% polyester, 30% wool
Order unit	PR

Safety Footwear

Overview

Art. no.	Collection	Replacement insole	Page	Art. no.	Collection	Replacement insole	Page	Art. no.	Collection	Replacement insole	Page
65001	uvex 2	95347	327	65718	uvex 1 sport white NC	95178	313	68280	uvex 1 G2	94900	306
65002	uvex 2	95348	327	65719	uvex 1 sport white NC	95179	313	68287	uvex 1 G2	94907	306
65003	uvex 2	95349	327	65727	uvex 1 sport white NC	95177	313	68288	uvex 1 G2	94908	306
65004	uvex 2	95340	327	65728	uvex 1 sport white NC	95178	313	68289	uvex 1 G2	94909	306
65011	uvex 2	95347	327	65729	uvex 1 sport white NC	95179	313	68290	uvex 1 G2	94900	306
65012	uvex 2	95348	327	65807	uvex 1 sport white	95797	311	68297	uvex 1 G2	94907	306
65013	uvex 2	95349	327	65808	uvex 1 sport white	95798	311	68298	uvex 1 G2	94908	306
65014	uvex 2	95340	327	65809	uvex 1 sport white	95799	311	68299	uvex 1 G2	94909	306
65021	uvex 2	95347	326	65817	uvex 1 sport white	95797	311	68300	uvex 1 G2	94900	307
65022	uvex 2	95348	326	65818	uvex 1 sport white	95798	311	68307	uvex 1 G2	94907	307
65023	uvex 2	95349	326	65819	uvex 1 sport white	95799	311	68308	uvex 1 G2	94908	307
65024	uvex 2	95350	326	65821	uvex 1 sport white	95797	311	68309	uvex 1 G2	94909	307
65031	uvex 2	95347	326	65822	uvex 1 sport white	95798	311	68310	uvex 1 G2	94900	306
65032	uvex 2	95348	326	65823	uvex 1 sport white	95799	311	68317	uvex 1 G2	94907	306
65033	uvex 2	95349	326	65837	uvex 1 sport white	95797	311	68318	uvex 1 G2	94908	306
65034	uvex 2	95350	326	65838	uvex 1 sport white	95798	311	68319	uvex 1 G2	94909	306
65081	uvex 2	95347	327	65839	uvex 1 sport white	95799	311	68329	uvex 1 G2	94909	306
65082	uvex 2	95348	327	65901	uvex 1 sport	95797	310	68330	uvex 1 G2	94900	307
65083	uvex 2	95349	327	65902	uvex 1 sport	95798	310	68337	uvex 1 G2	94907	307
65084	uvex 2	95340	327	65903	uvex 1 sport	95799	310	68338	uvex 1 G2	94908	307
65091	uvex 2	95347	327	65904	uvex 1 sport	95790	310	68339	uvex 1 G2	94909	307
65092	uvex 2	95348	327	65921	uvex 1 sport	95797	310	68341	uvex 1 G2	94907	302
65093	uvex 2	95349	327	65922	uvex 1 sport	95798	310	68342	uvex 1 G2	94908	302
65094	uvex 2	95340	327	65923	uvex 1 sport	95799	310	68343	uvex 1 G2	94909	302
65101	uvex 2 construction	95347	331	65924	uvex 1 sport	95790	310	68344	uvex 1 G2	94900	302
65102	uvex 2 construction	95348	331	65937	uvex 1 sport NC	95177	314	68361	uvex 1 G2	94907	303
65103	uvex 2 construction	95349	331	65938	uvex 1 sport NC	95178	314	68362	uvex 1 G2	94908	303
65121	uvex 2 construction	95347	331	65939	uvex 1 sport NC	95179	314	68363	uvex 1 G2	94909	303
65122	uvex 2 construction	95348	331	65940	uvex 1 sport	95790	309	68364	uvex 1 G2	94900	303
65123	uvex 2 construction	95349	331	65941	uvex 1 sport	95797	309	68371	uvex 1 G2	94907	303
65131	uvex 2 construction	95347	331	65942	uvex 1 sport	95798	309	68372	uvex 1 G2	94908	303
65132	uvex 2 construction	95348	331	65943	uvex 1 sport	95799	309	68373	uvex 1 G2	94909	303
65133	uvex 2 construction	95349	331	65944	uvex 1 sport	95790	309	68374	uvex 1 G2	94900	303
65221	uvex 2 MACSOLE®	95347	328	65947	uvex 1 sport	95797	309	68381	uvex 1 G2	94907	303
65222	uvex 2 MACSOLE®	95348	328	65948	uvex 1 sport	95798	309	68382	uvex 1 G2	94908	303
65223	uvex 2 MACSOLE®	95349	328	65949	uvex 1 sport	95799	309	68383	uvex 1 G2	94909	303
65224	uvex 2 MACSOLE®	95340	328	65961	uvex 1 sport	95797	309	68384	uvex 1 G2	94900	303
65231	uvex 2 MACSOLE®	95347	328	65962	uvex 1 sport	95798	309	68391	uvex 1 G2	94907	303
65232	uvex 2 MACSOLE®	95348	328	65963	uvex 1 sport	95799	309	68392	uvex 1 G2	94908	303
65233	uvex 2 MACSOLE®	95349	328	65964	uvex 1 sport	95790	309	68393	uvex 1 G2	94909	303
65234	uvex 2 MACSOLE®	95340	328	65980	uvex 1 sport	95790	309	68394	uvex 1 G2	94900	303
65241	uvex 2 STX MACSOLE®	95347	329	65987	uvex 1 sport	95797	309	68401	uvex 1 G2	94907	303
65242	uvex 2 STX MACSOLE®	95348	329	65988	uvex 1 sport	95798	309	68402	uvex 1 G2	94908	303
65243	uvex 2 STX MACSOLE®	95349	329	65989	uvex 1 sport	95799	309	68403	uvex 1 G2	94909	303
65251	uvex 2 STX MACSOLE®	95347	329	68001	uvex 1 x-craft	95797	297	68420	uvex 1 G2	94900	304
65252	uvex 2 STX MACSOLE®	95348	329	68002	uvex 1 x-craft	95798	297	68427	uvex 1 G2	94907	304
65253	uvex 2 STX MACSOLE®	95349	329	68003	uvex 1 x-craft	95799	297	68428	uvex 1 G2	94908	304
65281	uvex 2 MACSOLE®	95347	329	68004	uvex 1 x-craft	95790	297	68429	uvex 1 G2	94909	304
65282	uvex 2 MACSOLE®	95348	329	68011	uvex 1 x-craft	95791	297	68430	uvex 1 G2	94900	304
65283	uvex 2 MACSOLE®	95349	329	68012	uvex 1 x-craft	95792	297	68437	uvex 1 G2	94907	304
65284	uvex 2 MACSOLE®	95340	329	68013	uvex 1 x-craft	95793	297	68438	uvex 1 G2	94908	304
65291	uvex 2 MACSOLE®	95347	329	68014	uvex 1 x-craft	95794	297	68439	uvex 1 G2	94909	304
65292	uvex 2 MACSOLE®	95348	329	68021	uvex 1 x-craft	95797	298	68440	uvex 1 G2	94900	304
65293	uvex 2 MACSOLE®	95349	329	68022	uvex 1 x-craft	95798	298	68447	uvex 1 G2	94907	304
65294	uvex 2 MACSOLE®	95340	329	68023	uvex 1 x-craft	95799	298	68448	uvex 1 G2	94908	304
65303	uvex 2 MACSOLE®	95349	328	68024	uvex 1 x-craft	95790	298	68449	uvex 1 G2	94909	304
65311	uvex 2 MACSOLE®	95347	328	68031	uvex 1 x-craft	95791	298	68450	uvex 1 G2	94900	304
65312	uvex 2 MACSOLE®	95348	328	68032	uvex 1 x-craft	95792	298	68457	uvex 1 G2	94907	304
65313	uvex 2 MACSOLE®	95349	328	68033	uvex 1 x-craft	95793	298	68458	uvex 1 G2	94908	304
65321	uvex 2 MACSOLE®	95347	328	68034	uvex 1 x-craft	95794	298	68459	uvex 1 G2	94909	304
65322	uvex 2 MACSOLE®	95348	328	68041	uvex 1 x-craft	95791	298	68460	uvex 1 G2	94900	305
65323	uvex 2 MACSOLE®	95349	328	68042	uvex 1 x-craft	95792	298	68467	uvex 1 G2	94907	305
65363	uvex 2 MACSOLE®	95349	328	68043	uvex 1 x-craft	95793	298	68468	uvex 1 G2	94908	305
65591	uvex 3 asphaltPro	94597	347	68044	uvex 1 x-craft	95794	298	68469	uvex 1 G2	94909	305
65592	uvex 3 asphaltPro	94598	347	68081	uvex 1 x-craft planet	95797	295	68480	uvex 1 G2	94900	305
65593	uvex 3 asphaltPro	94599	347	68082	uvex 1 x-craft planet	95798	295	68487	uvex 1 G2	94907	305
65657	uvex 1	95347	319	68083	uvex 1 x-craft planet	95799	295	68488	uvex 1 G2	94908	305
65658	uvex 1	95348	319	68130	uvex 1 x-craft	95790	299	68489	uvex 1 G2	94909	305
65659	uvex 1	95349	319	68137	uvex 1 x-craft	95797	299	68490	uvex 1 G2	94900	307
65667	uvex 1	95347	320	68138	uvex 1 x-craft	95798	299	68497	uvex 1 G2	94907	307
65668	uvex 1	95348	320	68139	uvex 1 x-craft	95799	299	68498	uvex 1 G2	94908	307
65669	uvex 1	95349	320	68140	uvex 1 x-craft	95790	299	68499	uvex 1 G2	94909	307
65671	uvex 1 x-tended support	95347	323	68147	uvex 1 x-craft	95797	299	68500	uvex 1 G2	94900	307
65672	uvex 1 x-tended support	95348	323	68148	uvex 1 x-craft	95798	299	68507	uvex 1 G2	94907	307
65673	uvex 1 x-tended support	95349	323	68149	uvex 1 x-craft	95799	299	68508	uvex 1 G2	94908	307
65681	uvex 1 x-tended support	95347	322	68150	uvex 1 x-craft	95790	299	68509	uvex 1 G2	94909	307
65682	uvex 1 x-tended support	95348	322	68157	uvex 1 x-craft	95797	299	68527	uvex 1 G2	94907	305
65683	uvex 1 x-tended support	95349	322	68158	uvex 1 x-craft	95798	299	68528	uvex 1 G2	94908	305
65707	uvex 1 sport white NC	95177	313	68159	uvex 1 x-craft	95799	299	68529	uvex 1 G2	94909	305
65708	uvex 1 sport white NC	95178	313	68242	uvex 1 G2 planet	94908	301	68537	uvex 1 G2	94907	305
65709	uvex 1 sport white NC	95179	313	68267	uvex 1 G2	94907	306	68538	uvex 1 G2	94908	305
65717	uvex 1 sport white NC	95177	313	68268	uvex 1 G2	94908	306	68539	uvex 1 G2	94909	305

Art. no.	Collection	Replacement insole	Page
68601	uvex 3 MACSOLE®	86937	345
68602	uvex 3 MACSOLE®	86938	345
68603	uvex 3 MACSOLE®	86939	345
68611	uvex 3 MACSOLE®	86937	345
68612	uvex 3 MACSOLE®	86938	345
68613	uvex 3 MACSOLE®	86939	345
68621	uvex 3 MACSOLE®	86937	345
68622	uvex 3 MACSOLE®	86938	345
68623	uvex 3 MACSOLE®	86939	345
68631	uvex 3 MACSOLE®	86937	345
68632	uvex 3 MACSOLE®	86938	345
68633	uvex 3 MACSOLE®	86939	345
68711	uvex 3	94907	341
68712	uvex 3	94908	341
68713	uvex 3	94909	341
68721	uvex 3	94907	342
68722	uvex 3	94908	342
68723	uvex 3	94909	342
68731	uvex 3	94907	342
68732	uvex 3	94908	342
68733	uvex 3	94909	342
68741	uvex 3	94907	341
68742	uvex 3	94908	341
68743	uvex 3	94909	341
68751	uvex 3	94907	342
68752	uvex 3	94908	342
68753	uvex 3	94909	342
68771	uvex 3	94907	343
68772	uvex 3	94908	343
68773	uvex 3	94909	343
68781	uvex 3	94907	343
68782	uvex 3	94908	343
68783	uvex 3	94909	343
69061	uvex 2 trend	95187	336
69062	uvex 2 trend	95188	336
69063	uvex 2 trend	95189	336
69081	uvex 2 trend	95187	336
69082	uvex 2 trend	95188	336
69083	uvex 2 trend	95189	336
69341	uvex 2 trend	95187	338
69342	uvex 2 trend	95188	338
69343	uvex 2 trend	95189	338
69347	uvex 2 trend	95187	338
69348	uvex 2 trend	95188	338
69349	uvex 2 trend	95189	338
69351	uvex 2 trend	95187	338
69352	uvex 2 trend	95188	338
69353	uvex 2 trend	95189	338
69357	uvex 2 trend	95187	338
69358	uvex 2 trend	95188	338
69359	uvex 2 trend	95189	338
69361	uvex 2 trend	95187	336
69362	uvex 2 trend	95188	336
69363	uvex 2 trend	95189	336
69367	uvex 2 trend	95187	336
69368	uvex 2 trend	95188	336
69369	uvex 2 trend	95189	336
69371	uvex 2 trend	95187	337
69372	uvex 2 trend	95188	337
69373	uvex 2 trend	95189	337
69377	uvex 2 trend	95187	337
69378	uvex 2 trend	95188	337
69379	uvex 2 trend	95189	337
69381	uvex 2 trend	95187	336
69382	uvex 2 trend	95188	336
69383	uvex 2 trend	95189	336
69397	uvex 2 trend	95187	337
69398	uvex 2 trend	95188	337
69399	uvex 2 trend	95189	337
69477	uvex 2 trend	95187	337
69478	uvex 2 trend	95188	337
69479	uvex 2 trend	95189	337
69497	uvex 2 trend	95187	337
69498	uvex 2 trend	95188	337
69499	uvex 2 trend	95189	337
84271	uvex 1 business	95157	316
84272	uvex 1 business	95158	316
84273	uvex 1 business	95159	316
84281	uvex 1 business	95157	316
84282	uvex 1 business	95158	316
84283	uvex 1 business	95159	316
84301	uvex 1 business	95157	317

Art. no.	Collection	Replacement insole	Page
84302	uvex 1 business	95158	317
84303	uvex 1 business	95159	317
84481	uvex 1 business	95157	317
84482	uvex 1 business	95158	317
84483	uvex 1 business	95159	317
84491	uvex 1 business	95157	317
84492	uvex 1 business	95158	317
84493	uvex 1 business	95159	317
84697	uvex 1 business	95157	316
84698	uvex 1 business	95158	316
84699	uvex 1 business	95159	316
85117	uvex 1 x-tended support	95347	322
85118	uvex 1 x-tended support	95348	322
85119	uvex 1 x-tended support	95349	322
85127	uvex 1 x-tended support	95347	322
85128	uvex 1 x-tended support	95348	322
85129	uvex 1 x-tended support	95349	322
85141	uvex 1 x-tended support	95347	322
85142	uvex 1 x-tended support	95348	322
85143	uvex 1 x-tended support	95349	322
85161	uvex 1 x-tended support	95347	323
85162	uvex 1 x-tended support	95348	323
85163	uvex 1 x-tended support	95349	323
85171	uvex 1 x-tended support	95347	323
85172	uvex 1 x-tended support	95348	323
85173	uvex 1 x-tended support	95349	323
85191	uvex 1 x-tended support	95347	322
85192	uvex 1 x-tended support	95348	322
85193	uvex 1 x-tended support	95349	322
85361	uvex 1 x-tended support	95347	322
85362	uvex 1 x-tended support	95348	322
85363	uvex 1 x-tended support	95349	322
85420	uvex 1	95340	319
85421	uvex 1	95347	319
85428	uvex 1	95348	319
85429	uvex 1	95349	319
85430	uvex 1	95340	319
85437	uvex 1	95347	319
85438	uvex 1	95348	319
85439	uvex 1	95349	319
85440	uvex 1	95340	320
85447	uvex 1	95347	320
85448	uvex 1	95348	320
85449	uvex 1	95349	320
85450	uvex 1	95340	320
85457	uvex 1	95347	320
85458	uvex 1	95348	320
85459	uvex 1	95349	320
85467	uvex 1	95347	319
85468	uvex 1	95348	319
85469	uvex 1	95349	319
85477	uvex 1	95347	319
85478	uvex 1	95348	319
85479	uvex 1	95349	319
85607	uvex 1 ladies	95347	321
85608	uvex 1 ladies	95348	321
85617	uvex 1 ladies	95347	321
85618	uvex 1 ladies	95348	321
85627	uvex 1 ladies	95347	321
85628	uvex 1 ladies	95348	321
86937	Inlay soles	-	354
86938	Inlay soles	-	354
86939	Inlay soles	-	354
94597	Inlay soles	-	354
94598	Inlay soles	-	354
94599	Inlay soles	-	354
94756	NORA safety boots	-	357
94766	NORA safety boots	-	357
94900	Inlay soles	-	354
94907	Inlay soles	-	354
94908	Inlay soles	-	354
94909	Inlay soles	-	354
95157	Inlay soles	-	354
95158	Inlay soles	-	354
95159	Inlay soles	-	354
95177	Inlay soles	-	354
95178	Inlay soles	-	354
95179	Inlay soles	-	354
95187	Inlay soles	-	354
95188	Inlay soles	-	354
95189	Inlay soles	-	354
95281	Inlay soles	-	355

Art. no.	Collection	Replacement insole	Page
95282	Inlay soles	-	355
95283	Inlay soles	-	355
95284	Inlay soles	-	355
95285	Inlay soles	-	355
95286	Inlay soles	-	355
95287	Inlay soles	-	355
95288	Inlay soles	-	355
95289	Inlay soles	-	355
95340	Inlay soles	-	354
95347	Inlay soles	-	354
95348	Inlay soles	-	354
95349	Inlay soles	-	354
95531	uvex 2 xenova®	95347	333
95532	uvex 2 xenova®	95348	333
95533	uvex 2 xenova®	95349	333
95537	uvex 2 xenova®	95347	333
95538	uvex 2 xenova®	95348	333
95539	uvex 2 xenova®	95349	333
95547	uvex 2 xenova®	95347	333
95548	uvex 2 xenova®	95348	333
95549	uvex 2 xenova®	95349	333
95551	uvex 2 xenova®	95347	334
95552	uvex 2 xenova®	95348	334
95553	uvex 2 xenova®	95349	334
95557	uvex 2 xenova®	95347	334
95558	uvex 2 xenova®	95348	334
95559	uvex 2 xenova®	95349	334
95561	uvex 2 xenova®	95347	334
95562	uvex 2 xenova®	95348	334
95563	uvex 2 xenova®	95349	334
95577	uvex 2 xenova®	95347	333
95578	uvex 2 xenova®	95348	333
95579	uvex 2 xenova®	95349	333
95581	uvex 2 xenova®	95347	333
95582	uvex 2 xenova®	95348	333
95583	uvex 2 xenova®	95349	333
95691	uvex 2 xenova®	95347	334
95692	uvex 2 xenova®	95348	334
95693	uvex 2 xenova®	95349	334
95790	Inlay soles	-	354
95797	Inlay soles	-	354
95798	Inlay soles	-	354
95799	Inlay soles	-	354
9698100	uvex nano shoe add on	-	356
9698300	uvex nano shoe add in	-	356
98754	uvex tricoot liner socks	-	357



Art. no.	Collection	Page
62963	MACSOLE 1.0 WLD LOW	353
67312	MACCROSSROAD 3.0 HIGH	350
67313	MACCROSSROAD 3.0 HIGH	350
67314	MACCROSSROAD 3.0 HIGH	350
67322	MACCROSSROAD 3.0 LOW	350
67323	MACCROSSROAD 3.0 LOW	350
67324	MACCROSSROAD 3.0 LOW	350
67352	MACCROSSROAD 3.0 HIGH META	351
67353	MACCROSSROAD 3.0 HIGH META	351
67354	MACCROSSROAD 3.0 HIGH META	351
67362	MACCROSSROAD 3.0 HIGH BOA	351
67363	MACCROSSROAD 3.0 HIGH BOA	351
67364	MACCROSSROAD 3.0 HIGH BOA	351
67372	MACCROSSROAD 3.0 LOW BOA	351
67373	MACCROSSROAD 3.0 LOW BOA	351
67374	MACCROSSROAD 3.0 LOW BOA	351
67703	FOCUS 2.0 HIGH	353
67713	FOCUS 2.0 LOW	353
67723	FOCUS 2.0 PERFO	352
67733	FOCUS 2.0 SANDAL	352





You can find more information at uvex-academy.com

Industrial protective footwear

This practical seminar will help you to analyse the dangers that employees face, determine what equipment is required to keep them safe and select the most appropriate protective footwear



- basic information on the areas of application of PPE footwear
- information on standards, the differences between primary and secondary requirements and their applications
- description of the labels found on protective footwear and the meaning of the various codes
- identification and assessment of dangers, developing a risk analysis strategy and understanding which safety equipment is necessary
- information on materials, production processes and areas of application including:
 - Upper materials and lining
 - Soles
 - Protective toecaps
 - Penetration-resistant inlay
- choosing the correct protective footwear for each application

Target group

Those responsible for the work-related health and safety of employees, e.g. health and safety officers, specialist purchasers and representatives of employee groups.

For more information or to book a place, please visit uvex-academy.de, call +49 911 9736-1710 or email academy@uvex.de

