

uvex

uvex 2 construction

The essential allrounder.
Safe. Innovative. Robust.



protecting people



uvex

Safe. Innovative. Robust.

The new uvex 2 construction was developed to meet the specific challenges of the construction industry. The construction and engineering industries really put workers and their footwear to the test. In addition to high mechanical stress, extreme weather conditions are often a factor too.

Thanks to their intelligent design and innovative technologies, the uvex 2 construction models offer reliable protection, stability and exceptional comfort.



You can find more information at
www.uvex-safety.com/uvex2construction



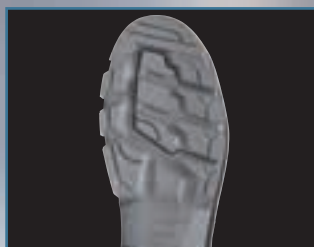
Stability and ankle protection

The anatomically shaped heel basket provides stability and protection against twisted ankles, especially on uneven surfaces.



Increased visibility

Reflective side strips provide optimal visibility and safety, especially in poorly lit working environments.



Safe slip resistance

The rough, self-cleaning tread ensures perfect grip without slipping, even on ladders or smooth surfaces.



uvex waterstop technology

uvex waterstop technology reliably protects against water penetration for four times longer than required by the standard.



65101
65102
65103



65121
65122
65123



65131
65132
65133

uvex 2 construction	Lace-up boot	Lace-up boot	Lace-up boot
Art. no. Width 10	65101	65121	65131
Art. no. Width 11	65102	65122	65132
Art. no. Width 12	65103	65123	65133
Standard	EN ISO 20345:2011 S3 SRC	EN ISO 20345:2011 S3 SRC	EN ISO 20345:2011 S3 SRC
Upper	water repellent leather	water repellent leather	water repellent leather
Lining	textile	textile	textile
Toe cap	metal-free	metal-free	metal-free
Penetration-resistant midsole	steel	steel	steel
Sizes	35 to 52	35 to 52	35 to 52
Order unit	PR	PR	PR

clima zone



► uvex recommends footwear with steel midsoles for demanding applications such as construction and construction-related industries.



uvex



The essential allrounder. Safe. Innovative. Robust.

UVEX ARBEITSSCHUTZ GMBH
Wuerzburger Straße 181-189
90766 Fuerth
GERMANY

T: +49 911 9736-0
F: +49 911 9736-1760
E: safety@uvex.de
I: uvex-safety.com



PEFC certified
This product is from
sustainably managed forests
and controlled sources.

www.pefc.org

protecting people

uvex-safety.com

