

The uvex logo is located in the top left corner. It consists of the word "uvex" in a bold, black, sans-serif font. Above the letter "u" is a small orange square, and above the letter "x" is a small blue square.

uvex

Safety Footwear

protecting people



protecting planet

To help raise awareness of its commitment to achieving increased sustainability, uvex has developed the **protecting planet** icon.

For uvex, **protecting planet** is more than a label. Based on the brand claim, **protecting people**, our sustainable approach integrates 3 core interlinked pillars – **ecology**, **economy** and **social responsibility**, that are incorporated throughout the business to improve our sustainability performance.

This explains the comprehensive audit, measurement and evaluation management process uvex undertakes along the entire value chain to ensure its products are as sustainable as possible.



uvex 1 G2 planet

The **uvex 1 G2 planet** is an example of the **planet series** product system.



protecting planet

by using bio-based material //
by using recycled material //
by using no harmful substances

The upper part of the safety shoe is made from 100 percent recycled polyester made from PET bottles. The penetration resistant midsole is also made from 100 percent recycled materials. 40 percent recycled TPU is used for the TPR scuff-cap. The shoe's distance mesh lining is made from 52 percent recycled polyester and 18 percent bamboo fibres. The replaceable comfortable climatic insole is also made of 100 percent recycled PU foam and polyester. The entire safety shoe is manufactured without using any harmful substances as listed in the banned hazardous substances list created by uvex and goes beyond that of REACH.



protecting planet

by using environmentally-
friendly packaging

All uvex shoe boxes are made from 90 percent recycled cardboard. 100 percent recycled tissue paper is used and the instructions for use are also 100 percent recycled paper.



protecting planet

by reducing waste //
by reducing CO₂ emissions

The uvex plant in Ceva, Italy, was already completely converted to green electricity and green gas a few years ago and has been certified according to the environmental management system ISO 14001 since 2017. In addition, the plant uses renewable energy with a photovoltaic system. uvex places a special focus on waste prevention. For example, some years ago, the shape of the soles were redesigned and as a result significantly reduced the amount of waste. The cleaning and injection process is also continuously optimised. For some time now, all PU waste is collected and processed into granules ready for reuse. For example, it is used to create our shock absorbing insoles. Up to 10 percent recycled PU waste from uvex's production is used for the TPU outsole of the uvex 1 G2 planet.



Safety footwear for the highest demands

uvex safety footwear competence center



Innovation:

One of the most state-of-the-art production facilities in Europe

Laser roughing cell provides excellent-quality rough contours for optimal sole adhesion.



uvex competence center for safety footwear in Ceva (CN), Italy

Development expertise, state-of-the-art robot-controlled production systems and optimised process structures to meet the highest ecological standards guarantee the first-class and sustainable quality of our safety shoes.

The production in Italy, which is one of the most modern production facilities for safety shoes in Europe, ensures efficient, resource-saving production and short distances from manufacturer to user.



Expertise

- production of direct-injected safety shoes with outsoles made of polyurethane, thermoplastic polyurethane and rubber
- innovative production technologies, e.g. for using rebound properties
- four DESMA direct-injection machines for producing uvex outsoles, three of them with DESMA AMIR system (automated material handling with integrated robots)
- extensively equipped test laboratory for quality and production assurance and for product development



Specialisation:

Direct injection of uvex safety shoe soles

Made in uvex
Made in Italy

Sustainability

- uses 100% green energy and green gas
- uses environmentally friendly solar energy (photovoltaic system installed since 2011)
- PUR waste management for recycling and saving polyurethane waste
- uses water-based release agents (numerous approvals in the automotive and supplier industries)

Responsibility:

Uses renewable energy and CO₂-neutral electricity and gas

Certifications

- ISO 9001-certified quality management system (since 2003)
- ISO 14001-certified environmental management system (since 2017, first certificate in the uvex safety group)
- ISO 45001-certified occupational health and safety management system (since 2020, replacement for OHSAS 18001 certification)

Expertise at uvex headquarters in Fürth, Germany

- product design and development
- biomechanics
- model building and prototyping
- quality and international manufacturing support
- supply chain management
- commercial processing
- process engineering
- training, product management and marketing



Safety Footwear

Areas of application: light · medium · heavy



light

areas of application

'Light' covers all areas of application where work is primarily carried out indoors and there are no significant demands on the physical properties of the outsole. Examples include assembly workplaces, as well as storage and logistics areas.



medium

areas of application

'Medium' applications usually take place both indoors and outdoors, with the outsole needing to be significantly more robust. Typical users include manual labourers, public sector employers and people working the chemical industry.



heavy

areas of application

'Heavy' applications involve external influences that place extensive demands on the shoe, its durability and stability. They are usually found in heavy mechanical engineering and in the construction industry, especially in building and civil engineering.

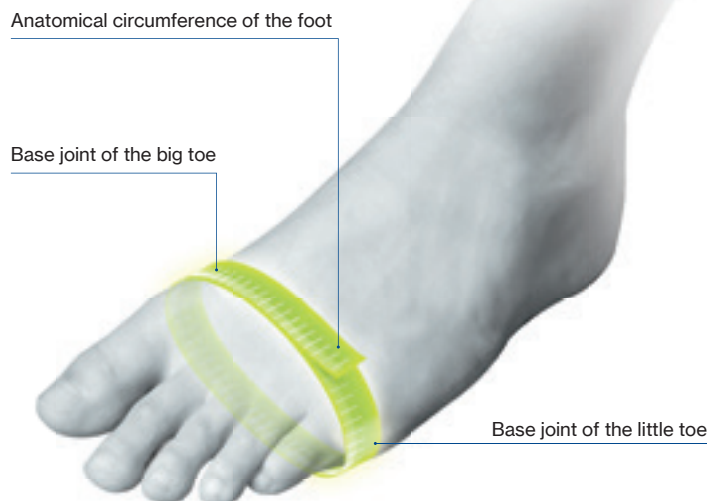
Safety Footwear

uvex multiple fit system

uvex multiple fit system

As part of the safety footwear multiple fit system, a footwear style is offered in the same size but in a range of different fits. The different fits are based on the measurement of the widest part of the foot. While the foot is under load, a measurement is taken of either the circumference of the foot at the base joint of the big toe and the base joint of the little toe, or alternatively the width of the foot at this point (see opposite).

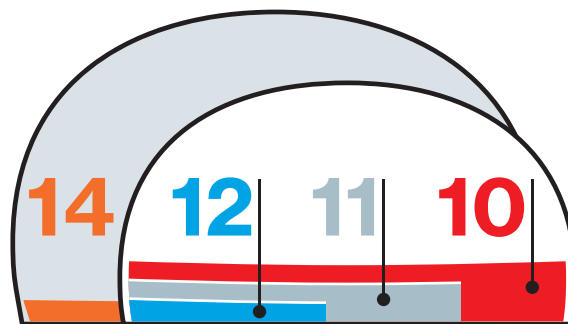
The classification of sizes and the corresponding values are detailed in the table below (all measurements in mm):



uvex shoe size	Foot length	UK size	Width 10	Width 11 (standard)	Width 12	Width 14
			Circum.	Circum.	Circum.	Circum.
35	217	3	216.5	222.5	228.5	240.5
36	225	3.5	221	227	233	245
37	232	4	225.5	231.5	237.5	249.5
38	240	5	230	236	242	254
39	247	6	234.5	240.5	246.5	258.5
40	255	6.5	239	245	251	263
41	262	7	243.5	249.5	255.5	267.5
42	270	8	248	254	260	272
43	277	9	252.5	258.5	264.5	276.5
44	285	10	257	263	269	281
45	292	10.5	261.5	267.5	273.5	285.5
46	300	11	266	272	278	290
47	307	12	270.5	276.5	282.5	294.5
48	315	13	275	281	287	299
49	322	14	279.5	285.5	291.5	303.5
50	330	14.5	284	290	296	308
51	337	15	288.5	294.5	300.5	312.5
52	345	16	293	299	305	317

All measurements in mm.

The required width can be determined from the table according to the wearer's foot length.



uvex size advisor app

When choosing safety shoes, it is especially important to choose the right size in order to benefit fully from their protective function. In addition, only a perfect fit ensures lasting wearer comfort. However, size specifications may vary depending on the manufacturer. With the uvex size advisor app you can determine the right uvex shoe size and width to ensure the perfect fit and most comfortable shoe for your working day.



Safety Footwear

Pictogram overview

clima zone

uvex climazone

uvex climazone is an innovative head-to-toe climate control system. uvex has combined its expertise in research and product development with the use of intelligent materials and processing technologies to develop a unique range of climate-optimising safety products, such as safety footwear.

bionom x

uvex bionom x

uvex has created a unique approach to the design of safety shoes that is based on biomechanics. This is reflected in visible common lines that optimise the foot-upper-sole-ground interaction and provide extraordinary performance and comfort across all applications.



ESD

ESD indicates the controlled discharge of electrostatic energy that can cause damage to electronic components in the event of uncontrolled discharge or trigger explosions. Safety footwear marked with the ESD symbol meets the ESD specification with a volume resistance of less than 35 megaohms. For a detailed explanation, see page 247.



Silicone-free

Certain materials such as silicones, plasticisers and similar substances can impair the lacquer wetting of surfaces. The sole materials of footwear with this symbol has been tested accordingly by the automotive industry and approved.



uvex medicare

uvex medicare designates safety footwear that has been certified for orthopaedic adjustment and orthopaedic shoes in accordance with German Institute for Occupational Health and Safety (DGUV) regulation 112-191 and/or Austrian ÖNORM Z 1259.



uvex construction

Especially suited to applications in the construction industry



uvex women's and men's last

To ensure a proper fit for both men and women the last should vary according to the intended gender. Safety footwear marked with these symbols have been produced in sizes 35-40 using a last which mimics the contours of the female foot.



The BOA® Fit System.

Delivering fit solutions purpose-built for performance, the BOA® Fit System is featured in products across industries (in medical, sports and workwear) and consists of three integral parts: a micro-adjustable dial, a super-strong lightweight lace and low friction lace guides.

The BOA® benefits.

Fit to perform.

Dial in your precise fit quickly and effortlessly. Even micro adjustments can be made quickly and easily on the fly, so you can always get the job done.

Confidence in all conditions.

The BOA® Fit System is extremely robust and has been tested under the toughest conditions. It will work as hard as you do so you can stay focused and confident in any environment - without ever having to remove your gloves.

Stay secure and focused.

BOA®'s precision engineered laces stay contained in the dial cartridge, out of your way and out of machinery.

Fit for life with BOA®.

The BOA® Fit System dials and laces are guaranteed for the lifetime of the product on which they are integrated.

How it works.



push in to engage



turn to tighten



pull up for quick release

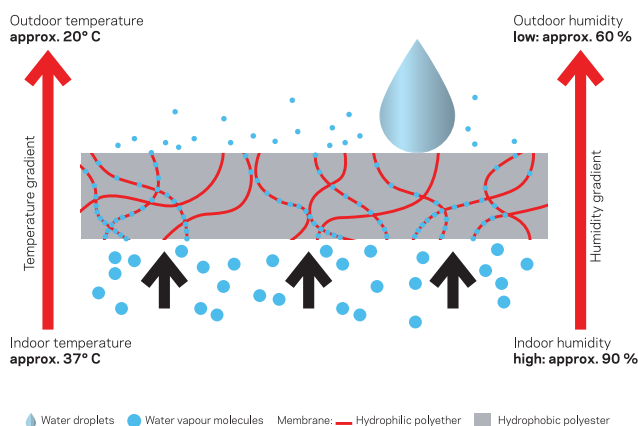


sympatex®

Excellent comfort whatever the weather: waterproof, breathable, windproof

There is nothing more unpleasant than wet and cold clothing and shoes. Sympatex has therefore developed a special membrane which absorbs the water vapour and removes it to the outside. This keeps the foot warm and dry even in extreme situations.

And the best thing about it is that the higher the physical activity, the more efficient the sympatex membrane works. Shoes with a sympatex membrane also provide effective protection from low temperatures and rain.



- | | |
|----------------------|-----------------------|
| 100% WATERPROOF | RECYCLABLE & RECYCLED |
| 100% WINDPROOF | PFC-FREE |
| OPTIMALLY BREATHABLE | PTFE-FREE |
| DURABLE | CO2 NEUTRAL |



www.sympatex.com

Safety Footwear

Standards · Labels

Labelling

Manufacturer's identification mark	uvex	CE symbol
Manufacturer's type designation	91 8543.8 42	Size
Number of European standard	EN ISO 20345:2011	Date of manufacture
Symbol for protection	S1 SRC	Article number
	Made/Produziert in Italy for/für UVEX ARBEITSSCHUTZ GMBH Würzburger Str. 181–189 D-90766 Fürth, Germany	Postal address of the manufacturer

Basic requirements/additional requirements/categories e.g. for leather shoes	Safety footwear EN ISO 20345	Occupational footwear EN ISO 20347
Basic requirements for shoes and impact resistance of toecaps	SB 200 Joule	OB No requirement
Additional requirements: Closed seat region, Antistatic properties, Energy absorption of seat region, Fuel resistance	S1	O1 (without resistance to fuels)
Additional requirements: as above, plus water penetration and absorption	S2	O2
Additional requirements: as above, plus Penetration resistance*, Cleated outsole	S3	O3
Basic requirements/additional requirements/categories e.g. for shoes made from PVC or PU		
Basic requirements for shoes and impact resistance of toecaps	SB 200 Joule	OB No requirement
Additional requirements: Antistatic properties, Energy absorption of seat region, Fuel resistance, Penetration resistance*, Cleated outsole	S5	O5
The choice of a particular shoe depends on the type of occupational risk. As with all footwear, additional requirements may exist (e.g. in terms of heat and cold insulation, penetration resistance or electrical resistance via ESD). These shoes are then marked accordingly. The testing principles for all basic and additional requirements are specified in EN ISO 20344.		

One of the three following requirements must be met and labelled in the shoe.

Label	Characteristics tested	Test conditions	Friction coefficient
SRA	Slip resistance on ceramic tile floors with sodium lauryl sulfate solution (SLS)	Forward slip of the heel Forward slip on a flat surface	No less than 0.28 No less than 0.32
SRB	Slip resistance on steel floors with glycerol	Forward slip of the heel Forward slip on a flat surface	No less than 0.13 No less than 0.18
SRC	Slip resistance on ceramic tile floors with sodium lauryl sulfate solution and on steel floors with glycerol	Includes all test conditions cited under a. and b.	

Additional requirements for special applications with corresponding symbols

SYMBOL	RISK COVERED	EN ISO 20345					EN ISO 20347			
		SB	S1	S2	S3	S5	OB	O1	O2	O3
–	Basic									
P	Penetration resistance*									
A	Antistatic footwear									
E	Energy absorption around heel									
HI	Heat insulation									
CI	Cold insulation									
WRU	Water resistance of upper									
HRO	Heat resistance of outsole (+300 °C/min)									
WR	Whole shoe waterproof									
M	Metatarsal protection									
FO	Resistance to oil and petrol									

Meets the specified requirement

Requirement can be met but is not stipulated

A revision of the EN ISO 20344 et seq. series of standards will be published at the turn of the year 2021/22. If you have any questions about any of the upcoming changes or additions, please contact your sales representative.

Safety Footwear

Standards · Labels · ESD

* Penetration resistance

Warning – Please note that the penetration resistance of this footwear has been measured in the laboratory using a truncated nail of diameter 4.5 mm and a force of 1100 N. Higher forces or nails of smaller diameter will increase the risk of penetration occurring. In such circumstances alternative preventative measures should be considered.

Two generic types of penetration resistant insert are currently available in PPE footwear. These are metal types and those from non-metal materials. Both types meet the minimum requirements for penetration resistance of the standard marked on this footwear but each has different additional advantages or disadvantages including the following:

Metal: Is less affected by the shape of the sharp object/hazard (i.e. diameter, geometry, sharpness) but due to shoemaking limitations does not cover the entire lower area of the shoe.

Non-metal: May be lighter, more flexible and provide greater coverage area when compared with metal but the penetration resistance may vary more depending on the shape of the sharp object/hazard (i.e. diameter, geometry, sharpness).

For more information about the type of penetration resistant insert provided in your footwear please contact the manufacturer or supplier detailed on these instructions.

Electrostatic

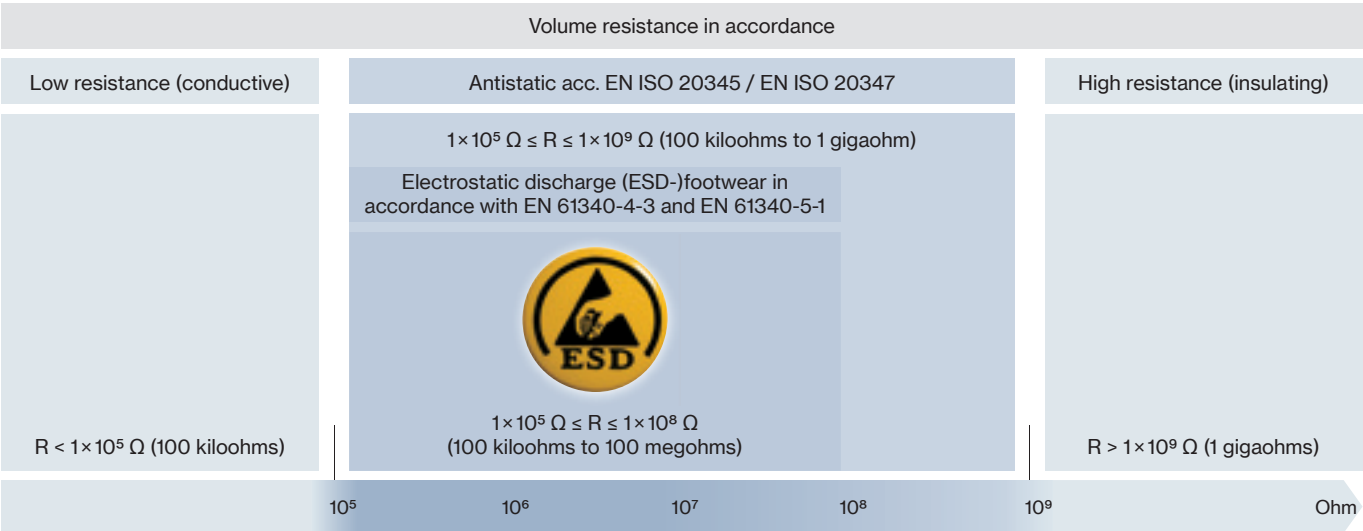
Controlling unwelcome electrostatic charge is becoming an increasingly important role in industry, as more and more employees come into contact with processes, materials or objects which are sensitive to electrostatic charge. It is often necessary to use safety footwear as part of a system to conduct electrostatic charge in such workplaces.

Independent of various measuring methods, volume resistance between 100 kilohms (1.0×10^5 ohms) and 100 megaohms (1×10^8 ohms) is required to fulfil the various relevant standards (e.g. EN ISO 20345, EN 61340).

All ESD-certified products in this catalogue feature the ESD symbol.



These products are also suitable in accordance with the specification for conductive footwear in the German Technical Rules for Hazardous Substances (TRGS) 727 “Avoiding risks of ignition resulting from electrostatic charges.”



R = electrical resistance



uvex 1 G2 – Science. Not Fiction.

uvex x-dry knit Technology

100% performance. 100% wearer comfort. 100% dry feet.

The unique uvex x-dry knit technology offers unparalleled levels of comfort and keeps feet dry:

365 days a year, 7 days a week, 24 hours a day. This is made possible by the intelligent combination of outstanding breathability and the water-repelling characteristics of the innovative uvex x-dry knit upper collar. Hot, sweaty feet are a thing of the past. Independent tests at PFI Pirmasens have proven the unique performance of the uvex x-dry knit technology.

uvex x-tended grip Technology

100% performance. Greater safety and stability. Longer life.

The uvex x-tended grip technology, based on the latest-generation TPU outsole, guarantees even greater performance in terms of abrasion resistance of the outsole and slip resistance on smooth or wet surfaces. The result? Greater safety and stability for the wearer when walking. Less wear and consequently lower costs thanks to a longer service life.

Water vapour permeability

40x

better than the minimum requirement of EN ISO 20345

Water vapour coefficient

17x

better than the minimum requirement of EN ISO 20345

Abrasion with uvex x-tended grip

66%

less abrasion than standard

With double load

33%

less abrasion than standard

Water penetration

100%

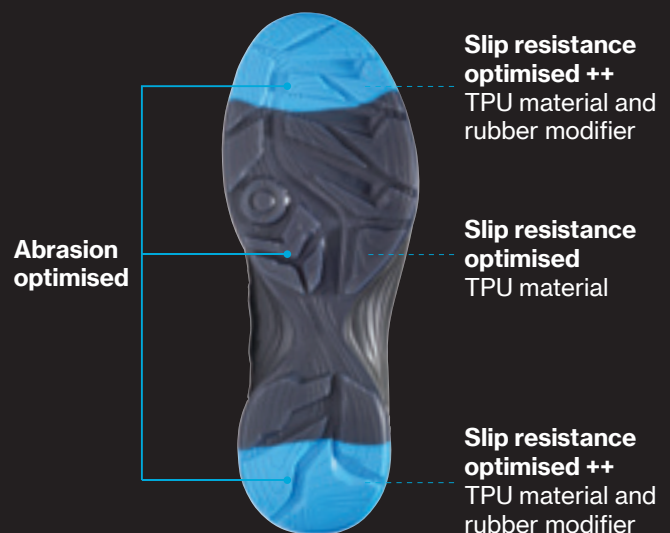
better than the minimum requirement of EN ISO 20345

Water absorption

10x

better than the minimum requirement of EN ISO 20345

Optimised slip resistance for increased safety



Science. Not Fiction.

uvex i-PUREnrj Technology

Cushioning. Stability. Energy Return.

More stability. Reduced risk of injuries.
More safety.

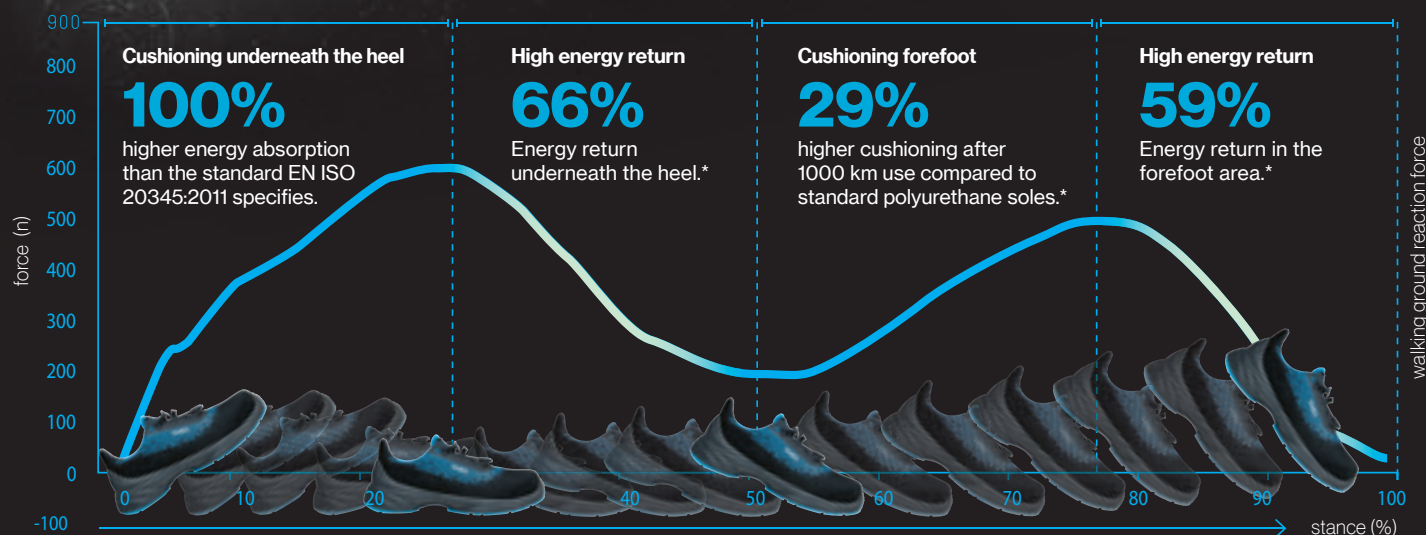
Excellent stability and secure fit in the shoe due to foamed heel basket and adapted density of the uvex i-PUREnrj technology. Reduces risk of injury from twisting through bending over.

Less fatigue. More comfort.
More performance.

21%

less perceived fatigue compared to standard polyurethane soles.

You can find more information at
www.uvex-safety.com/uvex1G2



uvex

uvex 1 G2 planet

100% Performance.
25% recycled.*



You can find more
information at
[www.uvex-safety.de/
uvex1G2planet](http://www.uvex-safety.de/uvex1G2planet)



From the upper to the sole, the new uvex 1 G2 planet offers both sustainability and performance in one. In accordance with DIN EN ISO 14021:2016, it consists of 25% recycled materials in terms of weight, without compromising its protective properties and comfort compared to the well-known uvex 1 G2 models.

Many shoe components, such as the upper and insole, are made from 100% recycled materials. In addition, we already use some of our own PU waste for the production of the outsole: up to 10% is used in the uvex x-tended grip planet.



40%
recycled material
in the TPR scuffcap

100%
recycled
shoelaces

Penetration resistance
made from
100%
recycled fibres

uvex x-tended grip planet

10%

of TPU outsole is made of recycled
PU waste



Comfortable climatic insole

100%

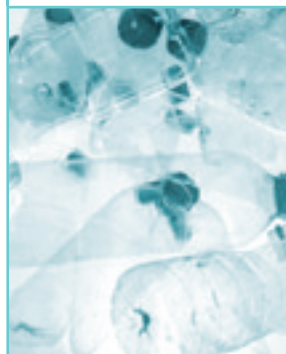
recycled polyester and PU foam



uvex x-dry knit planet

100%

recycled PET bottles in
the upper



Distance mesh lining

18%

of the lining is made of bamboo,
52% made of recycled polyester



uvex i-PUREnrj technology

Shock-absorbing. Stabilising.
Energy-returning.

- outstanding shock absorption
and energy return
- foamed heel basket provides
excellent stability and reduces
the risk of injury



Safety Footwear

uvex 1 G2 planet



68232



68242

clima zone



uvex 1 G2 planet · Shoe S1 P SRC

General features:

- extremely lightweight S1 P safety shoes made from recycled and sustainable materials
- made from synthetic materials, so suitable for people allergic to chrome
- all sole materials are free of silicone, plasticisers and other substances that interfere with wetting agents
- elastic laces for quick release and individual adjustment, normal laces also provided

Protection features:

- new, innovative uvex i-PUREnrj sole technology provides outstanding shock-absorption properties at the forefoot and heel, excellent rebound energy over the entire midsole and high levels of stability thanks to the foam heel basket
- uvex x-tended grip planet TPU outsole with up to 10% recycled PU waste from our production processes incorporates the latest biomechanical research, is highly durable and therefore offers excellent slip resistance. The tread is particularly suited to industrial floors
- meets the ESD specification with volume resistance under 35 megaohms
- the new wider, 100% metal-free uvex xenova® safety toe cap for more toe room and an optimum fit – compact design, anatomical shape, good lateral stability and no thermal conductivity
- penetration-resistant, non-metallic midsole made from 100% recycled material in accordance with the latest safety standards, does not restrict the flexibility of the shoe

- TPU scuffcap made from 40% recycled material protects the upper material

Comfort features:

- Breathable lining made from 18% bamboo and 52% recycled polyester for optimised climate management
- uvex x-dry knit planet textile material made from 100% recycled PET bottles
- exceptional wearer comfort thanks to new wider last
- virtually seam-free construction made from textile material to eliminate pressure points
- removable antistatic comfortable insole with a surface made from 100% recycled PET bottles and foam consisting of recycled PU production waste and recycled PU; with moisture transport system, additional shock absorption around the heel and forefoot as well as excellent support for the arch of the foot
- soft padding on dust tongue and collar
- sizes 35 to 40 have been produced using a women's last

Sustainability:

- largely made from recycled materials in order to conserve resources
- free from harmful substances according to our restricted substances list

Areas of application:

- light applications

uvex 1 G2 planet	Shoe	Shoe
Art. no. Width 11	68232	68242
Standard	EN ISO 20345:2011	EN ISO 20345:2011
	S1 P SRC	S1 P SRC
Upper	textile	textile
Lining	distance mesh lining	distance mesh lining
Sizes	35 to 52	35 to 52
Order unit	PR	PR

Safety Footwear

uvex 1 G2



clima zone



uvex 1 G2 · Sandal S1 SRC · Perforated shoe S1 SRC · Shoe S2 SRC · Lace-up boot S2 SRC

General features:

- ultra-lightweight S1 safety sandal, perforated safety shoe, S2 safety shoe/boot
- made from synthetic materials, so suitable for people allergic to chrome
- all sole materials are free of silicone, plasticisers and other paint wetting impairment substances
- individually adjustable elastic laces for quick release, normal laces also provided (shoes), individually adjustable double hook-and-loop fastening for the wearer's needs (sandal)

Protection features:

- new, innovative uvex i-PUREnrj sole technology with the highest level of shock-absorbing properties at the forefoot and at the heel, excellent rebound over the entire midsole and optimal stability thanks to the foam heel basket
- ergonomically designed TPU outsole uvex x-tended grip incorporates the latest biomechanical research, is highly durable and therefore offers excellent slip resistance. The tread is particularly suited to industrial floor surfaces
- meets the ESD specification with volume resistance under 35 megaohms
- new wider metal-free uvex xenova® protective toe cap for more toe room and optimum fit — compact design, anatomical shape, good lateral stability and no thermal conductivity

Comfort features:

- outstanding wearer comfort thanks to a newly developed last and climate-optimised, breathable materials
- virtually seam-free construction made from high-tech microvelour material to eliminate pressure points, perforated (S1 models) or hydrophobic (S2 models)
- removable antistatic comfortable insole with a moisture transport system, additional shock absorption around the heel and forefoot and excellent support for the arch
- soft padding on dust tongue (shoe, boot) and collar
- sizes 35 to 40 have been produced using a women's last

Sustainability:

- partly made from recycled materials in order to conserve resources
- free from harmful substances according to our restricted substances list

Areas of application:

- light applications



uvex 1 G2	Sandal	Perforated shoe	Shoe	Lace-up boot
Art. no. Width 10	68427	68437	68447	68457
Art. no. Width 11	68428	68438	68448	68458
Art. no. Width 12	68429	68439	68449	68459
Art. no. Width 14	68420	68430	68440	68450
Standard	EN ISO 20345:2011 S1 SRC	EN ISO 20345:2011 S1 SRC	EN ISO 20345:2011 S2 SRC	EN ISO 20345:2011 S2 SRC
Upper	microvelour	microvelour	microvelour	microvelour
Lining	distance mesh lining	distance mesh lining	distance mesh lining	distance mesh lining
Sizes	35 to 52	35 to 52	35 to 52	35 to 52
Order unit	PR	PR	PR	PR

Safety Footwear

uvex 1 G2



68341
68342
68343
68344



68361
68362
68363
68364



68371
68372
68373
68374

clima zone



uvex 1 G2 · Sandal S1 P SRC · Perforated shoe S1 P SRC · Shoe S1 P SRC

General features:

- ultra-lightweight S1 P safety sandal, perforated safety shoe
- made from synthetic materials, so suitable for people allergic to chrome
- all sole materials are free of silicone, plasticisers and other paint wetting impairment substances
- individually adjustable elastic laces for quick release, normal laces also provided (shoes), individually adjustable double hook-and-loop fastening for the wearer's needs (sandal)

Protection features:

- new, innovative uvex i-PUREnrj sole technology with the highest level of shock-absorbing properties at the forefoot and at the heel, excellent rebound over the entire midsole and optimal stability thanks to the foam heel basket
- ergonomically designed TPU outsole uvex x-tended grip incorporates the latest biomechanical research, is highly durable and therefore offers excellent slip resistance. The tread is particularly suited to industrial floor surfaces
- meets the ESD specification with volume resistance under 35 megaohms
- new wider metal-free uvex xenova® protective toe cap for more toe room and optimum fit – compact design, anatomical shape, good lateral stability and no thermal conductivity
- penetration-resistant, non-metallic midsole in accordance with current safety standards, does not restrict flexibility of the shoe

Comfort features:

- outstanding wearer comfort thanks to a newly developed last and climate-optimised, breathable materials
- virtually seam-free construction made from extremely breathable and hydrophobic uvex x-dry knit textile material (model 6834) or perforated high-tech microvelour material (models 6836 and 6837) to eliminate pressure point
- removable antistatic comfortable insole with a moisture transport system, additional shock absorption around the heel and forefoot and excellent support for the arch
- soft padding on collar and tongue
- sizes 35 to 40 have been produced using a women's last

Sustainability:

- partly made from recycled materials in order to conserve resources
- free from harmful substances according to our restricted substances list

Areas of application:

- light applications

uvex 1 G2	Shoe	Sandal	Perforated shoe
Art. no. Width 10	68341	68361	68371
Art. no. Width 11	68342	68362	68372
Art. no. Width 12	68343	68363	68373
Art. no. Width 14	68344	68364	68374
Standard	EN ISO 20345:2011 S1 P SRC	EN ISO 20345:2011 S1 P SRC	EN ISO 20345:2011 S1 P SRC
Upper	textile	microvelour	microvelour
Lining	distance mesh lining	distance mesh lining	distance mesh lining
Sizes	35 to 52	35 to 52	35 to 52
Order unit	PR	PR	PR

Safety Footwear

uvex 1 G2



68381
68382
68383
68384



68401
68402
68403

BOA



68391
68392
68393
68394

clima zone



uvex 1 G2 · Shoe S3 SRC · Lace-up boot S3 SRC

General features:

- ultra-lightweight S3 safety shoe, safety shoe/boot
- made from synthetic materials, so suitable for people allergic to chrome
- all sole materials are free of silicone, plasticisers and other paint wetting impairment substances
- individually adjustable elastic laces for quick release, normal laces also provided (68381 to 68384)
- BOA® Fit System (consisting of a micro-adjustable dial, super-strong lightweight laces and low friction lace guides) for a fast, effortless, precision fit (68401 to 68403)

Protection features:

- new, innovative uvex i-PUREnrj sole technology with the highest level of shock-absorbing properties at the forefoot and at the heel, excellent rebound over the entire midsole and optimal stability thanks to the foam heel basket
- ergonomically designed TPU outsole uvex x-tended grip incorporates the latest biomechanical research, is highly durable and therefore offers excellent slip resistance. The tread is particularly suited to industrial floor surfaces
- meets the ESD specification with volume resistance under 35 megaohms
- new wider metal-free uvex xenova® protective toe cap for more toe room and optimum fit – compact design, anatomical shape, good lateral stability and no thermal conductivity

- penetration-resistant, non-metallic midsole in accordance with current safety standards, does not restrict flexibility of the shoe

Comfort features:

- outstanding wearer comfort thanks to a newly developed last and climate-optimised, breathable materials
- virtually seam-free construction made from high-tech microvelour material to eliminate pressure points, hydrophobic
- removable antistatic comfortable insole with a moisture transport system, additional shock absorption around the heel and forefoot and excellent support for the arch
- soft padding on dust tongue and collar
- sizes 35 to 40 have been produced using a women's last

Sustainability:

- partly made from recycled materials in order to conserve resources
- free from harmful substances according to our restricted substances list

Areas of application:

- light applications

uvex 1 G2	Shoe	Shoe	Lace-up boot
Art. no. Width 10	68381	68401	68391
Art. no. Width 11	68382	68402	68392
Art. no. Width 12	68383	68403	68393
Art. no. Width 14	68384	-	68394
Standard	EN ISO 20345:2011 S3 SRC	EN ISO 20345:2011 S3 SRC	EN ISO 20345:2011 S3 SRC
Upper	microvelour	microvelour	microvelour
Lining	distance mesh lining	distance mesh lining	distance mesh lining
Sizes	35 to 52	35 to 52	35 to 52
Order unit	PR	PR	PR

You can find more information on uvex medicare on pages 385 to 393

Safety Footwear

uvex 1 G2



clima zone



uvex 1 G2 · sandal S1 SRC · Perforated shoe S1 SRC · Perforated lace-up boot S1 SRC · Perforated boot S1 SRC

General features:

- extremely lightweight S1 safety shoe
- made from synthetic materials, so suitable for people allergic to chrome
- all sole materials are free of silicone, plasticisers and other substances that interfere with wetting agents
- elastic laces for quick release and individual adjustment, normal laces also provided (shoe), individually adjustable double hook-and-loop fastening, for the wearer's needs (sandal and hook-and-loop fastening boot)

Protection features:

- new, innovative uvex i-PUREnrj sole technology provides outstanding shock-absorption properties at the forefoot and heel, excellent rebound energy over the entire midsole and high levels of stability thanks to the foam heel basket
- meets the ESD specification with volume resistance under 35 megaohms
- new wider, 100% metal-free uvex xenova® safety toe cap for more toe room and an optimum fit – compact design, anatomical shape, good lateral stability and no thermal conductivity

Comfort features:

- outstanding wearer comfort thanks to a new wider last and climate-optimised, breathable materials
- virtually seam-free construction made of perforated high-tech microvelour to eliminate pressure points
- removable antistatic comfortable insole with a moisture transport system, additional shock absorption around the heel and forefoot and excellent support for the arch of the foot
- soft padding on dust tongue (shoe, boot) and collar
- sizes 35 to 40 have been produced using a women's last

Sustainability:

- partly made from recycled materials in order to conserve resources
- free from harmful substances according to our restricted substances list

Areas of application:

- light applications

uvex 1 G2	Perforated shoe	sandal	Perforated shoe	Perforated lace-up boot	Perforated boot
Art. no. Width 10	68267	68287	68297	68317	-
Art. no. Width 11	68268	68288	68298	68318	-
Art. no. Width 12	-	68289	68299	68319	68329
Art. no. Width 14	-	68280	68290	68310	-
Standard	EN ISO 20345:2011	EN ISO 20345:2011	EN ISO 20345:2011	EN ISO 20345:2011	EN ISO 20345:2011
	S1 SRC	S1 SRC	S1 SRC	S1 SRC	S1 SRC
Upper	microvelour	microvelour	microvelour	microvelour	microvelour
Lining	distance mesh lining	distance mesh lining	distance mesh lining	distance mesh lining	distance mesh lining
Sizes	35 bis 43	35 to 52	35 to 52	35 to 52	35 to 52
Order unit	PR	PR	PR	PR	PR

Safety Footwear

uvex 1 G2



68307
68308
68309
68300



68337
68338
68339
68330

clima zone



uvex 1 G2 · Shoe S2 SRC · Lace-up boot S2 SRC

General features:

- extremely lightweight S2 safety shoe
- made from synthetic materials, so suitable for people allergic to chrome
- all sole materials are free of silicone, plasticisers and other substances that interfere with wetting agents
- elastic laces for quick release and individual adjustment, standard laces included (shoe)

Protection features:

- new, innovative uvex i-PUREnrj sole technology provides outstanding shock-absorption properties at the forefoot and heel, excellent rebound energy over the entire midsole and high levels of stability thanks to the foam heel basket
- meets the ESD specification with volume resistance under 35 megaohms
- new wider, 100% metal-free uvex xenova® safety toe cap for more toe room and an optimum fit – compact design, anatomical shape, good lateral stability and no thermal conductivity

Comfort features:

- outstanding wearer comfort thanks to a new wider last and climate-optimised, breathable materials
- virtually seam-free construction made of high-tech microvelour to eliminate pressure points
- removable antistatic comfortable insole with a moisture transport system, additional shock absorption around the heel and forefoot and excellent support for the arch of the foot
- soft padding on dust tongue and collar
- sizes 35 to 40 have been produced using a women's last

Sustainability:

- partly made from recycled materials in order to conserve resources
- free from harmful substances according to our restricted substances list

Areas of application:

- light applications



uvex 1 G2	Shoe	Lace-up boot
Art. no. Width 10	68307	68337
Art. no. Width 11	68308	68338
Art. no. Width 12	68309	68339
Art. no. Width 14	68300	68330
Standard	EN ISO 20345:2011 S2 SRC	EN ISO 20345:2011 S2 SRC
Upper	microvelour	microvelour
Lining	distance mesh lining	distance mesh lining
Sizes	35 to 52	35 to 52
Order unit	PR	PR

Safety Footwear

uvex 1 G2



uvex 1 G2 · Sandal S1 SRC · Perforated shoe S1 SRC · Perforated lace-up boot S1 SRC

General features:

- ultra-lightweight S1 safety sandal, perforated shoe and safety boot
- made from synthetic materials, so suitable for people allergic to chrome
- all sole materials are free of silicone, plasticisers and other paint wetting impairment substances
- individually adjustable elastic laces for quick release, normal laces also provided (shoe), individually adjustable double hook-and-loop fastening, for the wearer's needs (sandal)

Protection features:

- new, innovative uvex i-PUREnrj sole technology with the highest level of shock-absorbing properties at the forefoot and at the heel, excellent rebound over the entire midsole and optimal stability thanks to the foam heel basket
- meets the ESD specification with volume resistance under 35 megaohms
- new wider 100% metal-free uvex xenova® safety toe cap for more toe room and optimum fit – compact design, anatomical shape, good lateral stability and no thermal conductivity

Comfort features:

- outstanding wearer comfort thanks to a newly developed last and climate-optimised, breathable materials
- virtually seam-free upper in high-tech microvelour to eliminate pressure points, perforated
- removable antistatic comfortable insole with a moisture transport system, additional shock absorption around the heel and forefoot and excellent support for the arch
- soft padding on dust tongue (shoe, boot) and collar
- sizes 35 to 40 have been produced using a women's last

Sustainability:

- partly made from recycled materials in order to conserve resources
- free from harmful substances according to our restricted substances list

Areas of application:

- light applications

uvex 1 G2	Sandal	Perforated shoe	Perforated lace-up boot
Art. no. Width 10	68487	68467	68477
Art. no. Width 11	68488	68468	68478
Art. no. Width 12	68489	68469	68479
Art. no. Width 14	68480	68460	68470
Standard	EN ISO 20345:2011 S1 SRC	EN ISO 20345:2011 S1 SRC	EN ISO 20345:2011 S1 SRC
Upper	microvelour	microvelour	microvelour
Lining	distance mesh lining	distance mesh lining	distance mesh lining
Sizes	35 to 52	35 to 52	35 to 52
Order unit	PR	PR	PR

Safety Footwear

uvex 1 G2



68497
68498
68499
68490



68507
68508
68509
68500

clima zone



uvex 1 G2 · Shoe S2 SRC · Lace-up boot S2 SRC

General features:

- ultra-lightweight S2 safety shoe and safety boot
- made from synthetic materials, so suitable for people allergic to chrome
- all sole materials are free of silicone, plasticisers and other paint wetting impairment substances
- elastic laces for quick, individual adjustment, normal laces also provided (shoe)

Protection features:

- new, innovative uvex i-PUREnrj sole technology with the highest level of shock-absorbing properties at the forefoot and at the heel, excellent rebound over the entire midsole and optimal stability thanks to the foam heel basket
- meets the ESD specification with volume resistance under 35 megaohms
- new wider 100% metal-free uvex xenova® safety toe cap for more toe room and optimum fit – compact design, anatomical shape, good lateral stability and no thermal conductivity

Comfort features:

- outstanding wearer comfort thanks to a newly developed last and climate-optimised, breathable materials
- virtually seam-free upper in high-tech microvelour to eliminate pressure points, hydrophobic
- removable antistatic comfortable insole with a moisture transport system, additional shock absorption around the heel and forefoot and excellent support for the arch
- soft padding on dust tongue and collar
- sizes 35 to 40 have been produced using a women's last

Sustainability:

- partly made from recycled materials in order to conserve resources
- free from harmful substances according to our restricted substances list

Areas of application:

- light applications



uvex 1 G2	Shoe	Lace-up boot
Art. no. Width 10	68497	68507
Art. no. Width 11	68498	68508
Art. no. Width 12	68499	68509
Art. no. Width 14	68490	68500
Standard	EN ISO 20345:2011 S2 SRC	EN ISO 20345:2011 S2 SRC
Upper	microvelour	microvelour
Lining	distance mesh lining	distance mesh lining
Sizes	35 to 52	35 to 52
Order unit	PR	PR

uvex



Video



Winners at work – uvex 1 sport



Designed for Individuals



Sporty look.

Sporty design meets sophisticated functionality: The uvex 1 sport is both youthful and stylish combined with first-class wearer comfort, thanks to its lightweight design, climate optimised high-tech materials and ergonomically shaped outsole.

uvex 1 sport – the ideal companion for daily working life and more.

High breathability.

The breathable mesh upper ensures optimised climate control. The sporty look of the uvex 1 sport is contributing to the increased acceptance of wearing safety footwear.

Website



Lightweight and ergonomic design.

uvex 1 sport sole

- ergonomically designed outsole comprising dual-density polyurethane for light applications
- extremely comfortable underfoot
- suitable for general use on almost all surfaces
- excellent anti-slip properties (SRC)
- abrasion-resistant
- meets the ESD specification with volume resistance < 35 megaohms
- free of paint wetting impairment substances

Now also available as occupational shoes on page 265.

Safety Footwear

uvex 1 sport



65971
65972
65973
65974

65987
65988
65989
65980

65991
65992
65993
65994



reddot design award
winner 2018



clima zone



uvex 1 sport · Shoe S1 SRC/S1 P SRC

General features:

- modern, ultra lightweight and flexible S1 and S1 P safety shoe
- suitable for people allergic to chrome as it's made from synthetic materials
- all sole materials are free of silicones, plasticisers and other paint wetting impairment substances

Protection features:

- meets the ESD specification with volume resistance under 35 megaohms
- 100% metal-free uvex xenova® toe cap – compact design, anatomical shape, good lateral stability, no thermal conductivity
- ergonomically designed outsole made from dual density polyurethane with excellent slip resistance
- penetration-resistant, non-metallic midsole in accordance with the current safety standards, does not restrict flexibility of the shoe (S1 P shoes only)

Comfort features:

- outstanding wearer comfort thanks to a newly developed last and climate-optimised, breathable materials
- virtually seam-free construction made from high-tech materials to eliminate pressure points
- removable antistatic comfortable insole, with a moisture transport system and additional shock absorption around the heel and forefoot
- soft padding on collar and tongue
- sizes 35 to 40 have been produced using a women's last

Sustainability:

- partly made from recycled materials in order to conserve resources
- free from harmful substances according to our restricted substances list

Areas of application:

- light applications

uvex 1 sport	Shoe	Shoe	Shoe
Art. no. Width 10	65971	65987	65991
Art. no. Width 11	65972	65988	65992
Art. no. Width 12	65973	65989	65993
Art. no. Width 14	65974	65980	65994
Standard	EN ISO 20345:2011 S1 P SRC	EN ISO 20345:2011 S1 SRC	EN ISO 20345:2011 S1 P SRC
Upper	textile	textile	textile
Lining	distance mesh lining	distance mesh lining	distance mesh lining
Sizes	35 to 43	35 to 52	35 to 52
Order unit	PR	PR	PR

Safety Footwear

uvex 1 sport



S1P 65941
65942
65943
65944

S1 65947
65948
65949
65940

65961
65962
65963
65964

65901
65902
65903
65904

65921
65922
65923
65924



clima zone



uvex 1 sport · Shoe S3 SRC/S1 P SRC/S1 SRC

General features:

- modern, ultra lightweight and flexible S1-, S1 P and S3 safety shoes
- suitable for people allergic to chrome as it's made from synthetic materials
- all sole materials are free of silicones, plasticisers and other paint wetting impairment substances

Protection features:

- meets the ESD specification with volume resistance less than 35 megaohms
- 100% metal-free uvex xenova® toe cap – compact design, anatomical shape, good lateral stability, no thermal conductivity
- ergonomically designed outsole comprising dual-density polyurethane with excellent slip resistance
- penetration-resistant, non-metallic midsole in accordance with the current safety standards, does not restrict flexibility of the shoe (S1P- and S3 Shoe)

Comfort features:

- outstanding wearer comfort thanks to a newly developed last and climate-optimised, breathable materials
- virtually seam-free construction made from high-tech materials to eliminate pressure points
- removable antistatic comfortable insole, with a moisture transport system and additional shock absorption around the heel and forefoot
- soft padding on collar and tongue
- sizes 35 to 40 have been produced using a women's last

Sustainability:

- partly made from recycled materials in order to conserve resources
- free from harmful substances according to our restricted substances list

Areas of application:

- light applications

uvex 1 sport	Shoe	Shoe	Shoe	Shoe	Shoe
Art. no. Width 10	65941	65947	65901	65961	65921
Art. no. Width 11	65942	65948	65902	65962	65922
Art. no. Width 12	65943	65949	65903	65963	65923
Art. no. Width 14	65944	65940	65904	65964	65924
Standard	EN ISO 20345:2011	EN ISO 20345:2011	EN ISO 20345:2011	EN ISO 20345:2011	EN ISO 20345:2011
	S1 P SRC	S1 SRC	S1 P SRC	S3 SRC	S3 SRC
Upper	textile	textile	textile	microvelour	microvelour
Lining	distance mesh lining	distance mesh lining	distance mesh lining	distance mesh lining	distance mesh lining
Sizes	35 to 52	35 to 52	35 to 52	35 to 52	35 to 52
Order unit	PR	PR	PR	PR	PR

Safety Footwear

uvex 1 sport white



65807
65808
65809



65817
65818
65819



65821
65822
65823

clima zone



uvex 1 sport white · Shoe S2 SRC/S3 SRC

General features:

- modern, metal-free, ultra-lightweight and flexible S2 or S3 safety shoe
- upper made from hydrophobic microfibre material that is easy to clean
- minimal number of seams to reduce contamination
- made from synthetic materials, so suitable for people allergic to chrome
- washable at up to 30°C
- all sole materials are free of silicones, plasticisers and other paint wetting impairment substances

Protection features:

- meets the ESD specification with volume resistance under 35 megaohms
- 100% metal-free uvex xenova® protective toe cap – compact design, anatomical shape, good lateral stability and no thermal conductivity
- ergonomically designed outsole comprising dual density polyurethane with outstanding shock absorption and excellent slip resistance
- penetration-resistant, non-metallic midsole in accordance with current safety standards, does not restrict flexibility of the shoe (S3 shoe)

Comfort features:

- outstanding wearer comfort thanks to a newly developed last and climate-optimised, breathable materials
- virtually seam-free construction to eliminate pressure points
- removable antistatic comfortable insole, with a moisture transport system and additional shock absorption around the heel and forefoot
- padded dust tongue (S3 shoe) and collar
- sizes 35 to 40 have been produced using a women's last

Sustainability:

- partly made from recycled materials in order to conserve resources
- free from harmful substances according to our restricted substances list

Areas of application:

- light applications

uvex 1 sport white	Shoe	Shoe	Shoe
Art. no. Width 10	65807	65817	65821
Art. no. Width 11	65808	65818	65822
Art. no. Width 12	65809	65819	65823
Standard	EN ISO 20345:2011	EN ISO 20345:2011	EN ISO 20345:2011
	S2 SRC	S2 SRC	S3 SRC
Upper	microfibre	microfibre	microfibre
Lining	distance mesh lining	distance mesh lining	distance mesh lining
Sizes	35 to 52	35 to 52	35 to 52
Order unit	PR	PR	PR

Occupational shoes

uvex 1 sport NC



65937
65938
65939



65957
65958
65959

clima zone



uvex 1 sport NC · Shoe O1 FO SRC

General features:

- modern, ultra-lightweight and flexible O1 occupational shoes without toe cap
- suitable for people allergic to chrome as it's made from synthetic materials
- all sole materials are free of silicones, plasticisers and other paint wetting impairment substances

Protection features:

- meets the ESD specification with volume resistance less than 35 megaohms
- ergonomically designed outsole comprising dual-density polyurethane with excellent slip resistance

Comfort features:

- outstanding wearer comfort thanks to a newly developed last and climate-optimised, breathable materials
- virtually seam-free construction made from high-tech materials to eliminate pressure points
- removable antistatic comfortable insole, with a moisture transport system and additional shock absorption around the heel and forefoot
- soft padding on collar and tongue
- sizes 35 to 40 have been produced using a women's last

Sustainability:

- partly made from recycled materials in order to conserve resources
- free from harmful substances according to our restricted substances list

Areas of application:

- light applications



uvex 1 sport NC	Shoe	Shoe
Art. no. Width 10	65937	65957
Art. no. Width 11	65938	65958
Art. no. Width 12	65939	65959
Standard	EN ISO 20347:2012	EN ISO 20347:2012
	O1 FO SRC	O1 FO SRC
Upper	textile	textile
Lining	distance mesh lining	distance mesh lining
Sizes	35 to 52	35 to 52
Order unit	PR	PR

Next Level Equipment



Outstanding flexibility. Optimum wearer comfort.

The ergonomic design of the outsole supports the natural movement and flexibility of the feet.

High abrasion-resistant TPU sections ensure secure stepping and rolling of the foot, which helps prevent accidents.

Ideal shape around the joints for optimal torsion and good flexibility.

Self-cleaning tread optimised for slip resistance (SRC marking).



Jointed insert for securely climbing ladders.

Pivot point reduces pressure on joints when twisting and turning.



100% more shock absorption. Comfort in 3 dimensions.

The uvex 1 multilayer shock absorption system comprising a double-layered uvex 1 PU outsole and comfort insole with optimum shock absorption in the heel and the front of the foot helps protect the musculoskeletal system. The energy absorption in the heel is twice that required by EN ISO 20345. Pure walking comfort.



Outstanding stability. Reliable support and safety.

Consistent stability is essential for secure, sure-footedness and accident-free working. The visible external heel basket which is integrated into the sole ensures stability and offers additional side impact protection. The 'x-tended' support model offers additional sideways support and enhanced protection against ankle twisting and impact. Both sole versions securely enclose the foot, without limiting flexibility.



uvex monoskin shaft design. Pressure-free, comfortable fit.

The completely metal-free uvex monoskin upper shaft made from high-tech microfibre ensures outstanding wearer comfort without pressure points and the virtually seamless construction offers extended product life.



uvex climazone standard. Temperature and climate control.

Large perforations, ultra breathable high-tech-micro velour upper and distance mesh lining material together with a comfortable insole with moisture control system prevents the build-up of heat and reduces sweat.

Safety Footwear

uvex 1


85427
85428
85429
85420

85437
85438
85439
85430

65657
65658
65659

BOA


Focus Open 2013
Silver

reddot design award
winner 2013

DESIGNPREIS
DER
BUNDESREPUBLIK
DEUTSCHLAND
2014
NOMINIERT

clima zone



uvex 1 • Sandal S1 SRC • Perforated shoe S1 SRC

General features:

- ultra low weight, versatile S1 safety sandal and perforated safety shoe
- made from synthetic materials, so suitable for people allergic to chrome
- all sole materials are free of silicones, plasticisers and other paint wetting impairment substances
- two adjustable hook-and-loop straps (sandal) or elastic laces for quick, individual adjustment; normal laces also provided (shoe)
- BOA® Fit System (consisting of a micro-adjustable dial, super-strong lightweight laces and low friction lace guides) for a fast, effortless, precision fit (shoe 6565)

Protection features:

- meets the ESD specification with volume resistance under 35 megaohms
- 100% metal-free uvex xenova® toe cap – compact design, anatomical shape, good lateral stability, no thermal conductivity
- ergonomically designed outsole made from dual density polyurethane with excellent slip resistance

Comfort features:

- outstanding wearer comfort results from a newly developed last and climate-optimised, breathable materials
- virtually seam-free construction made from high-tech microvelour material to eliminate pressure points
- removable antistatic comfortable insole, with a moisture transport system and additional shock absorption around the heel and forefoot
- soft padding on collar and tongue
- sizes 35 to 40 have been produced using a women's last

Sustainability:

- partly made from recycled materials in order to conserve resources
- free from harmful substances according to our restricted substances list

Areas of application:

- light applications



uvex 1	Sandal	Perforated shoe	Perforated shoe
Art. no. Width 10	85427	85437	65657
Art. no. Width 11	85428	85438	65658
Art. no. Width 12	85429	85439	65659
Art. no. Width 14	85420	85430	-
Standard	EN ISO 20345:2011	EN ISO 20345:2011	EN ISO 20345:2011
	S1 SRC	S1 SRC	S1 SRC
Upper	microvelour	microvelour	microvelour
Lining	distance mesh lining	distance mesh lining	distance mesh lining
Sizes	35 to 52	35 to 52	35 to 52
Order unit	PR	PR	PR

You can find more information on uvex medicare on pages 385 to 393

Safety Footwear

uvex 1



85447
85448
85449
85440



65667
65668
65669

BOA



85457
85458
85459
85450

clima zone



uvex 1 • Shoe S2 SRC • Lace-up boot S2 SRC

General features:

- ultra low weight, versatile S2 safety shoe/boot
- made from synthetic materials, so suitable for people allergic to chrome
- all sole materials are free of silicones, plasticisers and other paint wetting impairment substances
- elastic laces for quick, individual adjustment, normal laces also provided (shoe 8544)
- BOA® Fit System (consisting of a micro-adjustable dial, super-strong lightweight laces and low friction lace guides) for a fast, effortless, precision fit (shoe 6566)

Protection features:

- meets the ESD specification with volume resistance under 35 megaohms
- 100% metal-free uvex xenova® toe cap – compact design, anatomical shape, good lateral stability, no thermal conductivity
- ergonomically designed outsole made from dual density polyurethane with excellent slip resistance

Comfort features:

- outstanding wearer comfort results from a newly developed last and climate-optimised, breathable materials
- virtually seam-free construction made from high-tech microvelour material to eliminate pressure points
- removable antistatic comfortable insole, with a moisture transport system and additional shock absorption around the heel and forefoot
- soft padding on collar and dust tongue
- sizes 35 to 40 have been produced using a women's last

Sustainability:

- partly made from recycled materials in order to conserve resources
- free from harmful substances according to our restricted substances list

Areas of application:

- light applications

uvex 1	Shoe	Shoe	Lace-up boot
Art. no. Width 10	85447	65667	85457
Art. no. Width 11	85448	65668	85458
Art. no. Width 12	85449	65669	85459
Art. no. Width 14	85440	-	85450
Standard	EN ISO 20345:2011 S2 SRC	EN ISO 20345:2011 S2 SRC	EN ISO 20345:2011 S2 SRC
Upper	microvelour	microvelour	microvelour
Lining	distance mesh lining	distance mesh lining	distance mesh lining
Sizes	35 to 52	35 to 52	35 to 52
Order unit	PR	PR	PR

Safety Footwear

uvex 1 ladies



clima zone



uvex 1 ladies · Sandal S1 SRC · Perforated shoe S1 SRC · Shoe S2 SRC · Perforated lace-up boot S1 SRC

General features:

- ultra low weight, versatile safety shoes
- made from synthetic materials, so suitable for people allergic to chrome
- all sole materials are free of silicones, plasticisers and other paint wetting impairment substances
- two adjustable hook-and-loop straps (sandal)
- elastic laces for quick, individual adjustment, normal laces also provided (shoes)

Protection features:

- meets the ESD specification with volume resistance under 35 megaohms
- 100% metal-free uvex xenova® toe cap – compact design, anatomical shape, good lateral stability, no thermal conductivity
- ergonomically designed outsole made from dual density polyurethane with excellent slip resistance

Comfort features:

- outstanding wearer comfort results from a newly developed last and climate-optimised, breathable materials with perforation (sandals)
- virtually seam-free construction made from high-tech microvelour material to eliminate pressure points
- removable antistatic comfortable insole, with a moisture transport system and additional shock absorption around the heel and forefoot
- soft padding on collar and tongue, S2 safety shoe with dust tongue

Sustainability:

- partly made from recycled materials in order to conserve resources
- free from harmful substances according to our restricted substances list

Areas of application:

- light applications



uvex 1	Sandal	Perforated shoe	Shoe	Perforated lace-up boot
Art. no. Width 10	85607	85617	85627	85647
Art. no. Width 11	85608	85618	85628	85648
Standard	EN ISO 20345:2011	EN ISO 20345:2011	EN ISO 20345:2011	EN ISO 20345:2011
	S1 SRC	S1 SRC	S2 SRC	S1 SRC
Upper	microvelour	microvelour	microvelour	microvelour
Lining	distance mesh lining	distance mesh lining	distance mesh lining	distance mesh lining
Sizes	35 to 52	35 to 52	35 to 52	35 to 43
Order unit	PR	PR	PR	PR

Safety Footwear
uvex 1



85467
85468
85469



85477
85478
85479

clima zone



uvex 1 · Perforated shoe S1 SRC · Perforated lace-up boot S1 SRC

General features:

- ultra low weight and versatile perforated S1 safety shoe or boot
- made from synthetic materials, so suitable for people allergic to chrome
- all sole materials are free of silicones, plasticisers and other paint wetting impairment substances
- elastic laces for quick, individual adjustment, normal laces also provided (shoe)

Protection features:

- meets the ESD specification with volume resistance under 35 megaohms
- 100% metal-free uvex xenova® toe cap – compact design, anatomical shape, good lateral stability, no thermal conductivity
- ergonomically designed outsole made from dual density polyurethane with excellent slip resistance

Comfort features:

- outstanding wearer comfort results from a newly developed last and climate-optimised, breathable materials with perforation
- virtually seam-free construction made from high-tech microvelour material to eliminate pressure points
- removable antistatic comfortable insole, with a moisture transport system and additional shock absorption around the heel and forefoot
- soft padding on collar and tongue
- sizes 35 to 40 have been produced using a women's last

Sustainability:

- partly made from recycled materials in order to conserve resources
- free from harmful substances according to our restricted substances list

Areas of application:

- light applications

uvex 1	Perforated shoe	Perforated lace-up boot
Art. no. Width 10	85467	85477
Art. no. Width 11	85468	85478
Art. no. Width 12	85469	85479
Standard	EN ISO 20345:2011 S1 SRC	EN ISO 20345:2011 S1 SRC
Upper	microvelour	microvelour
Lining	distance mesh lining	distance mesh lining
Sizes	35 to 52	35 to 52
Order unit	PR	PR

Safety Footwear

uvex 1 x-tended support



85127
85128
85129



85117
85118
85119



Focus Open 2013
Silver



reddot design award
winner 2013



German
Design Award
WINNER 2015

clima zone



uvex 1 x-tended support · Perforated Shoe S1 SRC

General features:

- ultra low weight and versatile perforated S1 safety shoe
- made from synthetic materials, so suitable for people allergic to chrome
- all sole materials are free of silicones, plasticisers and other paint wetting impairment substances
- elastic laces for quick, individual adjustment, normal laces also provided

Protection features:

- meets the ESD specification with volume resistance under 35 megaohms
- 100% metal-free uvex xenova® toe cap – compact design, anatomical shape, good lateral stability, no thermal conductivity
- ergonomically designed outsole made from dual density polyurethane with excellent slip resistance
- 'x-tended' support: medial and lateral heel support for the foot with specially designed side frame – provides additional protection from ankle twisting, stabilises and guides the foot while providing impact protection

Comfort features:

- outstanding wearer comfort results from a newly developed last and climate-optimised, breathable materials with perforation
- virtually seam-free construction made from high-tech microvelour material to eliminate pressure points
- removable antistatic comfortable insole, with a moisture transport system and additional shock absorption around the heel and forefoot
- soft padding on collar and tongue
- sizes 35 to 40 have been produced using a women's last

Sustainability:

- partly made from recycled materials in order to conserve resources
- free from harmful substances according to our restricted substances list

Areas of application:

- light applications



uvex 1 x-tended support	Perforated shoe	Perforated shoe
Art. no. Width 10	85127	85117
Art. no. Width 11	85128	85118
Art. no. Width 12	85129	85119
Standard	EN ISO 20345:2011 S1 SRC	EN ISO 20345:2011 S1 SRC
Upper	microvelour	microvelour
Lining	distance mesh lining	distance mesh lining
Sizes	35 to 52	35 to 52
Order unit	PR	PR

Safety Footwear

uvex 1 x-tended support


85361
85362
85363

85141
85142
85143

65681
65682
65683

BOA

85191
85192
85193

clima zone



uvex 1 x-tended support · Sandal S1 P SRC · Perforated Shoe S1 P SRC

General features:

- ultra lightweight and versatile perforated S1 P safety shoe or sandal
- made from synthetic materials, so suitable for people allergic to chrome
- all sole materials are free of silicones, plasticisers and other paint wetting impairment substances
- foamed polyurethane scuffcap helps increase product life of upper
- elastic laces for quick, individual adjustment, normal laces also provided (shoe 8514 and 8519)
- two adjustable hook-and-loop straps (sandal)
- BOA® Fit System (consisting of a micro-adjustable dial, super-strong lightweight laces and low friction lace guides) for a fast, effortless, precision fit (shoe 6568)

Protection features:

- meets the ESD specification with volume resistance under 35 megaohms
- 100% metal-free uvex xenova® toe cap – compact design, anatomical shape, good lateral stability, no thermal conductivity
- ergonomically designed outsole made from dual density polyurethane with excellent slip resistance

- ‘x-tended’ support: medial and lateral heel support for the foot with specially designed side frame – provides additional protection from ankle twisting, stabilises and guides the foot while providing impact protection (only shoes)
- penetration-resistant, non-metallic midsole in accordance with the current safety standards, does not restrict flexibility of the shoe

Comfort features:

- outstanding wearer comfort results from a newly developed last and climate-optimised, breathable materials with perforation
- virtually seam-free construction made from high-tech microvelour material to eliminate pressure points
- removable antistatic comfortable insole, with a moisture transport system and additional shock absorption around the heel and forefoot
- soft padding on collar and tongue
- sizes 35 to 40 have been produced using a women’s last

Sustainability:

- free from harmful substances according to our restricted substances list

Areas of application:

- light applications

uvex 1 x-tended support	Sandal	Perforated shoe	Perforated shoe	Perforated shoe
Art. no. Width 10	85361	85141	65681	85191
Art. no. Width 11	85362	85142	65682	85192
Art. no. Width 12	85363	85143	65683	85193
Standard	EN ISO 20345:2011 S1 P SRC	EN ISO 20345:2011 S1 P SRC	EN ISO 20345:2011 S1 P SRC	EN ISO 20345:2011 S1 P SRC
Upper	microvelour	microvelour	microvelour	microvelour
Lining	distance mesh lining	distance mesh lining	distance mesh lining	distance mesh lining
Sizes	35 to 52	35 to 52	35 to 52	35 to 52
Order unit	PR	PR	PR	PR

Safety Footwear

uvex 1 x-tended support



85161
85162
85163

65671
65672
65673

BOA

85171
85172
85173

clima zone



uvex 1 x-tended support · Shoe S3 SRC · Lace-up boot S3 SRC

General features:

- ultra low weight, versatile S3 safety shoe/boot
- made from synthetic materials, so suitable for people allergic to chrome
- all sole materials are free of silicones, plasticisers and other paint wetting impairment substances
- foamed polyurethane scuffcap helps increase product life of upper
- elastic laces for quick, individual adjustment, normal laces also provided (shoe 8516)
- BOA® Fit System (consisting of a micro-adjustable dial, super-strong lightweight laces and low friction lace guides) for a fast, effortless, precision fit (shoe 6567)

Protection features:

- meets the ESD specification with volume resistance under 35 megaohms
- 100% metal-free uvex xenova® toe cap – compact design, anatomical shape, good lateral stability, no thermal conductivity
- ergonomically designed outsole made from dual density polyurethane with excellent slip resistance

- 'x-tended' support: medial and lateral heel support for the foot with specially designed side frame – provides additional protection from ankle twisting, stabilises and guides the foot while providing impact protection (shoe and boot)
- penetration-resistant, non-metallic midsole in accordance with the current safety standards, does not restrict flexibility of the shoe

Comfort features:

- outstanding wearer comfort thanks to a newly developed last and climate-optimised, breathable materials
- virtually seam-free construction made from high-tech microvelour material to eliminate pressure points
- removable antistatic comfortable insole, with a moisture transport system and additional shock absorption around the heel and forefoot
- soft padding on collar and dust tongue
- sizes 35 to 40 have been produced using a women's last

Sustainability:

- free from harmful substances according to our restricted substances list

Areas of application:

- light applications

uvex 1 x-tended support	Shoe	Shoe	Lace-up boot
Art. no. Width 10	85161	65671	85171
Art. no. Width 11	85162	65672	85172
Art. no. Width 12	85163	65673	85173
Standard	EN ISO 20345:2011 S3 SRC	EN ISO 20345:2011 S3 SRC	EN ISO 20345:2011 S3 SRC
Upper	microvelour	microvelour	microvelour
Lining	distance mesh lining	distance mesh lining	distance mesh lining
Sizes	35 to 52	35 to 52	35 to 52
Order unit	PR	PR	PR

You can find more information on uvex medicare on pages 385 to 393

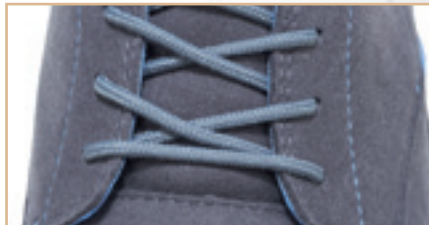
uvex 1 business – the best of both worlds

Perfect for the office as well as the workshop.

Do you need to head straight from the meeting room to the production line? uvex's new line of safety shoes brings together three classic looks from the fashion world – Derby shoes, desert boots and Chelsea boots. uvex 1 business safety shoes can go wherever you go, managing to be stylish and safe at the same time! Their attractive appearance blends seamlessly with smart business and casual attire, while their steel cap provides maximum protection with plenty of toe room. Their first-class wearer comfort never fails to impress, from morning to night.

High wearer acceptance

This ultra-lightweight range of safety footwear in a modern business look is available in S2 and S3 versions, in stylish black, blue or grey.



Proven safety

The extra-wide steel cap, metal-free, penetration-resistant midsole and non-slip outsole, which exceeds the requirements of the standard for shock absorption by almost 100%, provide optimum protection.



Breathable materials

The highly breathable, chrome-free materials and antistatic comfortable insole ensure a pleasant foot climate, even during prolonged periods of use.



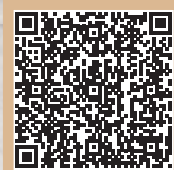
Comfortable fit

The innovative microvelour material with soft padding and insole with additional shock absorption around the heel and forefoot guarantee a pressure-free fit.



Orthopaedic solutions in accordance with German DGUV 112-191* and Austrian ONORM Z1259

clima zone



You can find more information at www.uvex-safety.com/uvex1business

* formerly BGR 191

Highstreet Fashion meets Safety



Safety Footwear

uvex 1 business



uvex 1 business · Shoe S2 SRC/S3 SRC · Lace-up boot S3 SRC · Slip-on boot S3 SRC

General features:

- modern, ultra-lightweight and flexible S2 and S3 safety shoes and boot: safe, stylish and super comfortable in a modern business look
- made from synthetic materials, so suitable for people allergic to chrome
- all sole materials are free of silicones, plasticisers and other paint wetting impairment substances

Protection features:

- meets the ESD specification with volume resistance under 35 megaohms
- robust, extra-wide steel toe cap for maximum wearer comfort
- ergonomically designed outsole made from polyurethane with excellent slip resistance
- penetration-resistant, non-metallic midsole in accordance with the current safety standards, does not restrict flexibility of the shoe (S3 models)

Comfort features:

- outstanding wearer comfort results from a newly developed last and climate-optimised, breathable materials
- made from high-tech microvelour for a soft, comfortable fit with no pressure points – with soft padding on the collar and a padded tongue
- removable antistatic comfortable insole, with a moisture transport system and additional shock absorption around the heel and forefoot

Sustainability:

- partly made from recycled materials in order to conserve resources
- free from harmful substances according to our restricted substances list

Areas of application:

- light applications

uvex 1 business	Shoe	Shoe	Lace-up boot	Slip-on boot
Art. no. Width 10	84697	84281	84271	84261
Art. no. Width 11	84698	84282	84272	84262
Art. no. Width 12	84699	84283	84273	84263
Standard	EN ISO 20345:2011	EN ISO 20345:2011	EN ISO 20345:2011	EN ISO 20345:2011
	S2 SRC	S3 SRC	S3 SRC	S3 SRC
Upper	microvelour	microvelour	microvelour	microvelour
Lining	textile	textile	textile	textile
Sizes	39 to 52	39 to 52	39 to 52	39 to 52
Order unit	PR	PR	PR	PR

Safety Footwear

uvex 1 business



84301
84302
84303



84481
84482
84483



84491
84492
84493

clima zone



uvex 1 business • Shoe S3 SRC

General features:

- modern, extremely lightweight and flexible S3 safety shoes: safe, stylish and super comfortable in a modern business look
- made from synthetic materials, so suitable for people allergic to chrome (model 8430)
- all sole materials are free of silicone, plasticisers and other substances that interfere with wetting agents

Protection features:

- meets the ESD specification with volume resistance under 35 megaohms
- robust, extra-wide steel toe cap for maximum wearer comfort
- ergonomically designed polyurethane outsole with excellent slip resistance
- penetration-resistant, non-metallic midsole that meets the requirements of the current safety standards, does not restrict the flexibility of the shoe

Comfort features:

- outstanding wearer comfort thanks to a newly developed last and climate-optimised, breathable materials
- made from high-tech microvelour (model 8430) or soft, hydrophobic, full-grain leather (models 8448, 8449) for a soft, comfortable fit with no pressure points – with soft padding on the collar and a padded tongue
- removable anti-static comfortable insole with a moisture transport system and additional shock absorption around the heel and forefoot

Sustainability:

- partly made from recycled materials in order to conserve resources
- free from harmful substances according to our restricted substances list

Areas of application:

- light applications

uvex 1 business	Shoe	Shoe	Shoe
Art. no. Width 10	84301	84481	84491
Art. no. Width 11	84302	84482	84492
Art. no. Width 12	84303	84483	84493
Standard	EN ISO 20345:2011	EN ISO 20345:2011	EN ISO 20345:2011
	S3 SRC	S3 SRC	S3 SRC
Upper	microvelour	water-repellent leather	water-repellent leather
Lining	textile	textile	textile
Sizes	39 to 52	39 to 52	39 to 52
Order unit	PR	PR	PR

Safety Footwear
uvex motion style



uvex motion style · Perforated Shoe S1 SRC · Shoe S2 SRC · Lace-up boot S2 SRC

General features:

- low weight, perforated S1 and S2 safety shoe and lace-up boot with a sporty design
- made from synthetic materials, so suitable for people allergic to chrome
- all sole materials are free of silicones, plasticisers and other paint wetting impairment substances
- elastic laces for quick, individual adjustment (shoe)

Protection features:

- meets the ESD specification with volume resistance under 35 megaohms
- self-cleaning, lightweight PU outsole with optimal abrasion resistance and shock absorption and excellent slip resistance
- reliable protection for wearers: steel toe cap and stabilising uvex anti-twist heel cap to prevent ankle twisting

Comfort features:

- ideal foot climate constantly maintained due to uvex climazone: highly breathable lining and upper with perforation together with comfortable climatic insole with moisture transport system
- high-tech microvelour material
- comfortable, soft and largely seamless design with no pressure points – with soft padding on collar and tongue
- antistatic uvex 3D hydroflex® foam insole for optimal shock absorption around heel and forefoot

Sustainability:

- free from harmful substances according to our restricted substances list

Areas of application:

- light applications

uvex motion style	Perforated shoe	Perforated shoe	Shoe	Lace-up boot
Art. no. Width 11	69898	69988	69788	69798
Standard	EN ISO 20345:2011	EN ISO 20345:2011	EN ISO 20345:2011	EN ISO 20345:2011
	S1 SRC	S1 SRC	S2 SRC	S2 SRC
Upper	microvelour	microvelour	microvelour	microvelour
Lining	textile	textile	textile	textile
Sizes	36 to 50	36 to 50	36 to 50	36 to 50
Order unit	PR	PR	PR	PR

Safety Footwear

uvex motion 3XL



64963

clima zone



uvex motion 3XL · Shoe S3 SRC

General features:

- extremely wide innovative shoe
- made from synthetic materials, so suitable for people allergic to chrome
- variable PU outsole individually adjustable to a range of protective modifications
- ample room for individually adapted insole for diabetic wearers

Protection features:

- meets the ESD specification with volume resistance under 35 megaohms
- 100% metal-free uvex xenova® toe cap means the entire shoe is neither thermally conductive nor magnetic
- penetration-resistant, non-metallic midsole in accordance with the current safety standards, does not restrict flexibility of the shoe
- extended uvex anti-twist heel cap significantly increases stability and offers improved protection from ankle twisting

Comfort features:

- virtually seam-free construction from high-tech microvelour material to eliminate pressure points
- soft padding on collar and padded dust tongue
- elastic laces for quick, individual adjustment
- individually changeable antistatic EVA insole

Sustainability:

- free from harmful substances according to our restricted substances list



uvex motion 3XL	Shoe
Art. no. Width >15	64963
Standard	EN ISO 20345:2011
	S3 SRC
Upper	microvelour
Lining	distance mesh lining
Sizes	35 to 50
Order unit	PR

► Further information on this product can be found on pages 383 to 391

Winners at Work – uvex 2

Pushing the Limits!



Superior performance across all disciplines

The innovative uvex 2 safety footwear range in protection classes S3 and S1 P is up for the challenge: delivering optimum shock absorption, ergonomic fit, low weight and excellent climate characteristics, ensuring maximum performance and redefining the limits for safety footwear.

Energy-Saving and Lightweight.

Helps prevent fatigue.

Shock Absorption System for Professionals.

Relieve strain with every step.

Reliable stability.

With maximum freedom of movement.

Pressure-free, comfortable fit.

Thanks to uvex monoskin shaft design.

Anatomically designed for optimum comfort and fit.

Comfortable underfoot with climate control.

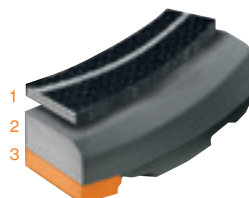
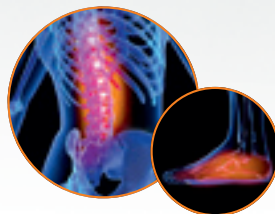
Highly breathable thanks to uvex climazone.

100% better than the standard

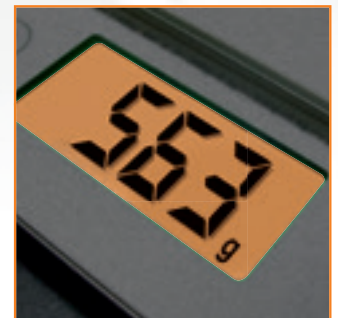
With up to 40 joules of energy absorption in the heel area, the uvex 2 reduces strain on the body.

In spite of the penetration-resistant midsole the energy absorption in the heel is approximately twice that required by EN ISO 20345.

The uvex 2 multilayer shock absorption system and antistatic comfort insole with additional shock absorption elements at the heel and forefoot, help protect the musculoskeletal system on hard or rough terrain.



- 1 Comfort insole
- 2 PU midsole
- 3 PU or rubber outsole



Ultra lightweight

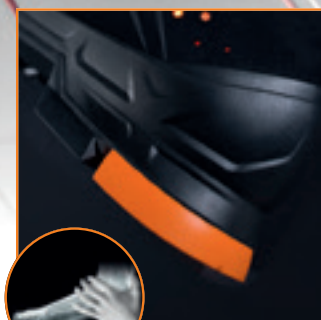
The uvex 2 range is one of the lightest S3 and S1 P safety footwear ranges for robust applications in its field.¹



Website



Video



Highly flexible

Enjoy unlimited freedom of movement, especially when kneeling, thanks to the flexible penetration resistant, metal-free midsole. The uvex no tie quick-lace system allows laces to be adjusted easily and adapt throughout the day keeping feet comfortable².

Excellent stability

The directly moulded PU scuffcap reliably protects the upper and prevents wear and tear when kneeling. The externally visible heel basket system integrated into the sole ensures sure-footedness and additional ankle protection without impairing comfort.

uvex

uvex 2 – MACSOLE technology



The rubber technology MACSOLE®



MACSOLE® rubber technology has been used successfully for over 20 years to meet the special requirements for extremely innovative, comfortable safety shoes with very high quality standards. The patented rubber compound from the uvex safety group is used for both uvex and Heckel shoes to ensure optimum protection.

Rubber is known for its excellent properties in various fields of areas of applications: slip resistance, durability, abrasion resistance, grip, heat and cold resistance, chemical resistance and high elasticity characterize rubber.

Based on these properties uvex develops new rubber sole technologies under the MACSOLE® brand. The MACSOLE®-outsole is made from a special and exclusive one hundred percent rubber compound, the result of constant research by our R&D laboratories.



Durability

MACSOLE® outsoles are made of a unique and exclusive rubber compound offering exceptional abrasion resistance and prolong the service life of our products.



Grip

Due to its formulation, our exclusive MACSOLE® rubber offers an unparalleled level of slip resistance, which goes far beyond the requirements of the safety shoe standard.



Resistance to contact heat

Only rubber resists to contact heat up to 300°C and meets the additional requirement HRO of the safety shoe standard.

Shock absorption

The unique and exclusive rubber compound used for all MACSOLE® models, together with the soft PU midsole, ensures excellent shock absorption and natural elasticity. The natural elasticity of rubber ensures long-lasting shock absorption. MACSOLE® footwear helps to lower the risk of accidents by reducing fatigue caused by prolonged walking or standing.

Safety Footwear

uvex 2 STX MACSOLE®



65241
65242
65243



65251
65252
65253

MAC
sole
sympatex®
clima zone



uvex 2 STX MACSOLE® · Shoe S3 WR HI HRO SRC · Lace-up boot S3 WR HI HRO SRC

General features:

- lightweight and flexible, waterproof safety shoe/boot in S3 WR
- made from synthetic materials, so suitable for people allergic to chrome
- foamed polyurethane scuffcap helps increase product life of upper
- elastic laces for quick, individual adjustment, normal laces also provided (65241 to 65243)

Protection features:

- waterproof and breathable thanks to sympatex® lining (WR marking)
- meets the ESD specification with volume resistance under 35 megaohms
- 100% metal-free uvex xenova® protective toe cap – compact design, anatomical shape, good lateral stability and no thermal conductivity
- ultra-lightweight, double-layer sole made from optimal shock-absorbing polyurethane midsole and uvex MACSOLE®-technology rubber outsole with excellent anti-slip properties
- HI marking for heat-insulating substructure (tested in accordance with standard at +150°C)
- HRO marking for heat-resistant substructure for brief exposure up to +300°C
- secure grip when climbing on ladders due to the stabilising arch support
- penetration-resistant, non-metallic midsole in accordance with current safety standards, does not restrict flexibility of the shoe

Comfort features:

- breathable yet waterproof thanks to sympatex® lining
- outstanding wearer comfort thanks to a newly developed last and climate-optimised, breathable materials
- virtually seam-free construction made from high-tech microvelour material to eliminate pressure points
- removable anti-static comfortable insole, with a moisture transport system and additional shock absorption around the heel and forefoot
- soft padding on dust tongue and collar
- increased low-temperature flexibility of uvex MACSOLE® rubber sole
- sizes 35 to 40 have been produced using a women's last

Sustainability:

- free from harmful substances according to our restricted substances list

Areas of application:

- medium applications



uvex 2 STX MACSOLE®	Shoe	Lace-up boot
Art. no. Width 10	65241	65251
Art. no. Width 11	65242	65252
Art. no. Width 12	65243	65253
Art. no. Width 14	-	-
Standard	EN ISO 20345:2011 S3 WR HI HRO SRC	EN ISO 20345:2011 S3 WR HI HRO SRC
Upper	microvelour	microvelour
Lining	sympatex® laminate	sympatex® laminate
Sizes	35 to 52	35 to 52
Order unit	PR	PR

Safety Footwear

uvex 2 MACSOLE®



uvex 2 MACSOLE® · Shoe S3 HI HRO SRC · Lace-up boot S3 HI HRO SRC

General features:

- lightweight and flexible S3 safety shoe/boot
- foamed polyurethane scuffcap helps increase product life of upper
- elastic laces for quick, individual adjustment, normal laces also provided (shoe 6522)
- BOA® Fit System (consisting of a micro-adjustable dial, super-strong lightweight laces and low friction lace guides) for a fast, effortless, precision fit (shoe 6531)

Protection features:

- meets the ESD specification with a volume resistance of less than 35 megaohms
- 100% metal-free uvex xenova® toe cap – compact design, anatomical shape, good lateral stability, no thermal conductivity
- ultra lightweight, double-layer sole made from optimal shock-absorbing midsole and uvex MACSOLE®-technology rubber outsole with excellent anti-slip properties
- insulating shoe design (CI certification in accordance with EN ISO 20345, winter boot only)
- HI label for heat-insulating substructure (tested in accordance with standard at +150 °C)
- HRO label for heat-resistant substructure for brief exposure up to +300 °C

- secure grip when climbing on ladders due to the stabilising arch support
- penetration-resistant, non-metallic midsole in accordance with the current safety standards, does not restrict flexibility of the shoe or create thermal bridges

Comfort features:

- outstanding wearer comfort results from a newly developed last and climate-optimised, breathable materials
- virtually seam-free construction made from particularly soft cowhide leather to eliminate pressure points
- removable antistatic comfortable insole, with a moisture transport system and additional shock absorption around the heel and forefoot
- soft padding on collar and dust tongue
- increased low-temperature flexibility of the uvex MACSOLE® rubber sole
- sizes 35 to 40 have been produced using a women's last

Sustainability:

- free from harmful substances according to our restricted substances list

Areas of application:

- medium applications

uvex 2 MACSOLE®	Shoe	Shoe	Lace-up boot	Winter lace-up boot
Art. no. Width 10	65221	65311	65231	-
Art. no. Width 11	65222	65312	65232	-
Art. no. Width 12	65223	65313	65233	65303
Art. no. Width 14 Standard	65224	-	65234	-
	EN ISO 20345:2011	EN ISO 20345:2011	EN ISO 20345:2011	EN ISO 20345:2011
	S3 HI HRO SRC	S3 HI HRO SRC	S3 HI HRO SRC	S3 CI HI HRO SRC
Upper	water-repellent, full-grain smooth leather	water-repellent, full-grain smooth leather	water-repellent, full-grain smooth leather	water-repellent, full-grain smooth leather
Lining	distance mesh lining	distance mesh lining	distance mesh lining	distance mesh lining
Sizes	35 to 52	35 to 52	35 to 52	35 to 52
Order unit	PR	PR	PR	PR

Safety Footwear

uvex 2 MACSOLE®



65201
65202
65203
65204

65211
65212
65213
65214

65281
65282
65283
65284

65291
65292
65293
65294



clima zone



uvex 2 MACSOLE® · Sandal S1 P HRO SRC · Perforated shoe S1 P HRO SRC · Shoe S3 HI HRO SRC · Lace-up boot S3 HI HRO SRC

General features:

- lightweight and flexible safety shoes
- suitable for people allergic to chrome as made from synthetic materials
- foamed polyurethane scuffcap helps increase product life of upper
- two adjustable hook-and-loop straps (sandal) or elastic laces for quick, individual adjustment; normal laces also provided (shoes)

Protection features:

- meets the ESD specification with volume resistance less than 35 megaohms
- 100% metal-free uvex xenova® toe cap – compact design, anatomical shape, good lateral stability, no thermal conductivity
- ultra lightweight, double-layer sole made from optimal shock-absorbing polyurethane midsole and uvex MACSOLE®-technology rubber outsole with excellent anti-slip properties
- HI label for heat-insulating substructure (tested in accordance with standard at +150 °C, S3 models)
- HRO label for heat-resistant substructure for brief exposure up to +300 °C
- secure grip when climbing on ladders due to the stabilising arch support

- penetration-resistant, non-metallic midsole in accordance with the current safety standards, does not restrict flexibility of the shoe

Comfort features:

- outstanding wearer comfort results from a newly developed last and climate-optimised, breathable materials
- virtually seam-free construction made from high-tech microvelour material to eliminate pressure points
- removable antistatic comfortable insole, with a moisture transport system and additional shock absorption around the heel and forefoot
- soft padding on collar and dust tongue (S3 models)
- increased low-temperature flexibility of uvex MACSOLE® rubber sole
- sizes 35 to 40 have been produced using a women's last

Sustainability:

- free from harmful substances according to our restricted substances list

Areas of application:

- medium applications



uvex 2 MACSOLE®	Sandal	Perforated Shoe	Shoe	Lace-up boot
Art. no. Width 10	65201	65211	65281	65291
Art. no. Width 11	65202	65212	65282	65292
Art. no. Width 12	65203	65213	65283	65293
Art. no. Width 14	65204	65214	65284	65294
Standard	EN ISO 20345:2011 S1 P HRO SRC	EN ISO 20345:2011 S1 P HRO SRC	EN ISO 20345:2011 S3 HI HRO SRC	EN ISO 20345:2011 S3 HI HRO SRC
Upper	microvelour	microvelour	microvelour	microvelour
Lining	distance mesh lining	distance mesh lining	distance mesh lining	distance mesh lining
Sizes	35 to 52	35 to 52	35 to 52	35 to 52
Order unit	PR	PR	PR	PR

Safety Footwear

uvex 2



65021
65022
65023
65024

65031
65032
65033
65034



clima zone



uvex 2 · Shoe S3 SRC · Lace-up boot S3 SRC

General features:

- low weight and flexible S3 safety shoe/boot
- all sole materials are free of silicones, plasticisers and other paint wetting impairment substances
- foamed polyurethane scuffcap helps protect upper and increase product life
- elastic laces for quick, individual adjustment, normal laces also provided (shoe)

Protection features:

- meets the ESD specification with volume resistance under 35 megaohms
- 100% metal-free uvex xenova® toe cap – compact design, anatomical shape, good lateral stability, no thermal conductivity
- ergonomically designed outsole made from dual density polyurethane with a rough, self-cleaning tread and excellent slip resistance
- secure grip when climbing on ladders due to the stabilising arch support

- penetration-resistant, non-metallic midsole in accordance with the current safety standards, does not restrict flexibility of the shoe

Comfort features:

- outstanding wearer comfort results from a newly developed last and climate-optimised, breathable materials
- virtually seam-free construction made from particularly soft cowhide leather to eliminate pressure points
- removable antistatic comfortable insole, with a moisture transport system and additional shock absorption around the heel and forefoot
- soft padding on collar and dust tongue
- sizes 35 to 40 have been produced using a women's last

Sustainability:

- free from harmful substances according to our restricted substances list

Areas of application:

- medium applications

uvex 2	Shoe	Lace-up boot
Art. no. Width 10	65021	65031
Art. no. Width 11	65022	65032
Art. no. Width 12	65023	65033
Art. no. Width 14	65024	65034
Standard	EN ISO 20345:2011 S3 SRC	EN ISO 20345:2011 S3 SRC
Upper	water-repellent, full-grain smooth leather	water-repellent, full-grain smooth leather
Lining	distance mesh lining	distance mesh lining
Sizes	35 to 52	35 to 52
Order unit	PR	PR

Safety Footwear

uvex 2



clima zone



uvex 2 • Sandal S1 P SRC • Perforated shoe S1 P SRC • Shoe S3 SRC • Lace-up boot S3 SRC

General features:

- lightweight and flexible safety shoes
- suitable for people allergic to chrome as made from synthetic materials
- foamed polyurethane scuffcap helps increase product life of upper
- two adjustable hook-and-loop straps (sandal) or elastic laces for quick, individual adjustment; normal laces also provided (shoes)

Protection features:

- meets the ESD specification with a volume resistance of less than 35 megaohms
- 100% metal-free uvex xenova® toe cap – compact design, anatomical shape, good lateral stability, no thermal conductivity
- ergonomically designed outsole made from dual-density polyurethane with a rough, self-cleaning tread and excellent slip resistance
- secure grip when climbing on ladders due to the stabilising arch support
- penetration-resistant, non-metallic midsole in accordance with the latest safety standards, does not restrict the flexibility of the shoe

Comfort features:

- outstanding wearer comfort results from a newly developed last and climate-optimised, breathable materials
- virtually seam-free construction made from high-tech microvelour material to eliminate pressure points
- removable antistatic comfortable insole, with a moisture transport system and additional shock absorption around the heel and forefoot
- soft padding on collar and dust tongue (S3 models)
- sizes 35 to 40 have been produced using a women's last

Sustainability:

- free from harmful substances according to our restricted substances list

Areas of application:

- medium applications



uvex 2	Sandal	Perforated Shoe	Shoe	Lace-up boot
Art. no. Width 10	65001	65011	65081	65091
Art. no. Width 11	65002	65012	65082	65092
Art. no. Width 12	65003	65013	65083	65093
Art. no. Width 14	65004	65014	65084	65094
Standard	EN ISO 20345:2011 S1 P SRC	EN ISO 20345:2011 S1 P SRC	EN ISO 20345:2011 S3 SRC	EN ISO 20345:2011 S3 SRC
Upper	microvelour	microvelour	microvelour	microvelour
Lining	distance mesh lining	distance mesh lining	distance mesh lining	distance mesh lining
Sizes	35 to 52	35 to 52	35 to 52	35 to 52
Order unit	PR	PR	PR	PR

uvex

Safety Footwear
uvex 2 construction

The essential allrounder

Safe. Innovative. Robust.

The new uvex 2 construction was developed to meet the specific challenges of the construction industry. The construction and engineering industries really put workers and their footwear to the test. In addition to high mechanical stress, extreme weather conditions are often a factor too.

Thanks to their intelligent design and innovative technologies, the uvex 2 construction models offer reliable protection, stability and exceptional comfort.



clima zone



uvex waterstop technology
uvex waterstop technology reliably protects against water penetration for four times longer than required by the standard.



Stability and ankle protection
The anatomically shaped heel basket provides stability and protection against twisted ankles, especially on uneven surfaces.



Increased visibility
Reflective side strips provide optimal visibility and safety, especially in poorly lit working environments.



Safe slip resistance
The rough, self-cleaning tread ensures perfect grip without slipping, even on ladders or smooth surfaces.

Safety Footwear

uvex 2 construction



uvex 2 construction · Lace-up boot S3 SRC

General features:

- robust, lightweight and modern S3 lace-up safety boot with wide fit
- all sole materials are free of silicone, plasticisers and other substances that interfere with wetting agents
- foamed polyurethane scuffcap helps increase the product life of the upper material covering the toe cap
- dirt-resistant, smooth-running and heat-resistant lacing system

Protection features:

- water-repellent leather with uvex waterstop technology for reliable protection against splashing water during rain and cleaning work
- trusted protection for the wearer and material: penetration-resistant steel midsole
- anatomical shape, moulded polyurethane heel basket for stability and protection against ankle twisting
- 100% metal-free uvex xenova® safety toe cap for more toe room and an optimum fit – compact design, anatomical shape, good lateral stability and no thermal conductivity
- ergonomically designed outsole made from dual-density polyurethane with a rough, self-cleaning tread and excellent slip resistance
- secure grip when climbing on ladders due to the stabilising arch support
- reflective side strips for optimum visibility

Comfort features:

- outstanding wearer comfort thanks to a newly developed last and climate-optimised, breathable materials
- virtually seam-free construction made from water-repellent leather to eliminate pressure points
- removable anti-static comfortable insole with a moisture transport system and additional shock absorption around the heel and forefoot
- soft padding on dust tongue and collar
- sizes 35 to 40 have been produced using a women's last

Sustainability:

- partly made from recycled materials in order to conserve resources
- free from harmful substances according to our restricted substances list

Areas of application:

- medium applications

► **uvex recommends footwear with steel midsoles for demanding applications such as construction and construction-related industries.**

uvex 2 construction	Lace-up boot	Lace-up boot	Lace-up boot
Art. no. Width 10	65101	65121	65131
Art. no. Width 11	65102	65122	65132
Art. no. Width 12	65103	65123	65133
Standard	EN ISO 20345:2011	EN ISO 20345:2011	EN ISO 20345:2011
	S3 SRC	S3 SRC	S3 SRC
Upper	water repellent leather	water repellent leather	water repellent leather
Lining	textile	textile	textile
Sizes	35 to 52	35 to 52	35 to 52
Order unit	PR	PR	PR

Trend-setting all-rounder



Indoor and outdoor use

uvex 2 xenova® safety shoe series – exceptional, robust and comfortable shoes, whatever you're doing. Whether indoors or outdoors, the uvex 2 xenova® are the right choice for applications such as mechanical and plant engineering, metal processing, energy (generation, supply &

grid operation), municipal operations, motorway maintenance, railways, transport & logistics, airports, trades, ancillary construction work, horticulture and landscaping. uvex 2 xenova® – the trend-setting allrounders for a wide range of applications.

Metal-free safety

The uvex xenova® system offers high levels of safety thanks to its metal-free toe cap and optional metal-free, penetration-resistant

flexible midsole that keeps out the cold, and is lightweight and flexible for lasting wearer comfort.



Comfortable, lightweight shoes

The uvex 2 xenova® safety shoes do not compromise when it comes to comfort: shock-absorbing, extremely breathable, lightweight and a perfect fit thanks to

the unique combination of uvex technologies.



You can find more information at www.uvex-safety.com/uvex2xenova



uvex climazone standard The ultra-breathable high-tech microvelour upper material, distance mesh lining and comfortable insole with moisture transport system prevent the build-up of heat and reduce uncomfortable sweating.



Excellent fit due to newly developed last and uvex multiple fit system – available in 3 widths.

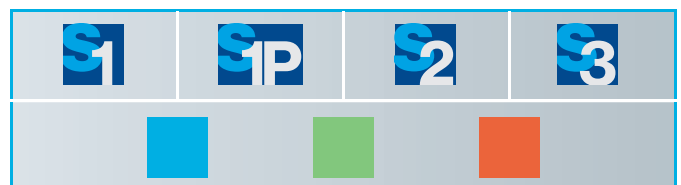


Lightweight and robust uvex dual density polyurethane sole with excellent slip resistance (SRC) and multi-layer shock absorption.

Impressively diverse

Made from high-quality black micro velour or smooth leather, the uvex 2 xenova® series offers an impressively wide variety of styles in accent colours blue, green and red in protection classes S1, S1 P, S2 and S3.

An overview of all uvex 2 xenova® models can be found on page 292.





uvex 2 xenova®

Model overview

uvex 2 xenova® with microvelour upper			
S1 Sandal	 95537 95538 95539	 95597 95598 95599	 95047 95048 95049
S1 P Sandal	 95531 95532 95533	 95591 95592 95593	 95041 95042 95043
S1 Perforated shoe	 95547 95548 95549	 95607 95608 95609	 95057 95058 95059
S1 P Perforated shoe with BOA® Fit System	 95581 95582 95583		
S2 Shoe	 95577 95578 95579	 95687 95688 95689	 95087 95088 95089
uvex 2 xenova® with leather upper			
S2 Shoe	 95557 95558 95559	 95647 95648 95649	 95067 95068 95069
S2 Lace-up boot	 95567 95568 95569	 95667 95668 95669	 95077 95078 95079
S3 Shoe	 95551 95552 95553	 95641 95642 95643	 95061 95062 95063
S3 Lace-up boot	 95561 95562 95563	 95661 95662 95663	 95071 95072 95073
S3 Boot with BOA® Fit System	 95691 95692 95693		

Safety Footwear

uvex 2 xenova®



S1 P | 95531
95532
95533

S1 | 95537
95538
95539



S1 P | 95591
95592
95593

S1 | 95597
95598
95599



S1 P | 95041
95042
95043

S1 | 95047
95048
95049

clima zone



uvex 2 xenova® · Sandal S1 SRC/S1 P SRC

General features:

- lightweight and modern S1 and S1 P safety sandals
- made from synthetic materials, so suitable for people allergic to chrome
- all sole materials are free of silicones, plasticisers and other paint wetting impairment substances
- double, individually adjustable hook and loop straps

Protection features:

- meets the ESD specification with volume resistance under 35 megaohms
- 100% metal-free uvex xenova® safety toe cap — compact design, anatomical shape, good lateral stability, no thermal conductivity
- penetration-resistant, non-metallic midsole in accordance with the current safety standards, does not restrict flexibility of the shoe (S1 P models)
- ergonomically designed outsole made from dual density polyurethane with excellent slip resistance
- reflective elements for better visibility

Comfort features:

- lightweight with excellent shock-absorbing properties
- outstanding wearer comfort thanks to a newly developed last and climate-optimised, breathable materials
- removable antistatic comfortable insole, with a moisture transport system and additional shock absorption around the heel and forefoot
- soft padding on tongue and collar

Sustainability:

- partly made from recycled materials in order to conserve resources
- free from harmful substances according to our restricted substances list

Areas of application:

- medium applications



uvex 2 xenova®	Sandal	Sandal	Sandal	Sandal	Sandal	Sandal
Art. no. Width 10	95531	95537	95591	95597	95041	95047
Art. no. Width 11	95532	95538	95592	95598	95042	95048
Art. no. Width 12	95533	95539	95593	95599	95043	95049
Standard	EN ISO 20345:2011	EN ISO 20345:2011	EN ISO 20345:2011	EN ISO 20345:2011	EN ISO 20345:2011	EN ISO 20345:2011
	S1 P SRC	S1 SRC	S1 P SRC	S1 SRC	S1 P SRC	S1 SRC
Upper	microvelour	microvelour	microvelour	microvelour	microvelour	microvelour
Lining	distance mesh lining	distance mesh lining	distance mesh lining	distance mesh lining	distance mesh lining	distance mesh lining
Sizes	38 to 52	38 to 52	38 to 52	38 to 52	38 to 52	38 to 52
Order unit	PR	PR	PR	PR	PR	PR

Safety Footwear

uvex 2 xenova®



95547
95548
95549

95581
95582
95583

BOA



95607
95608
95609

95057
95058
95059

clima zone



uvex 2 xenova® · Perforated shoe S1 SRC/S1 P SRC

General features:

- lightweight, modern, perforated S1 and S1 P safety shoe
- made from synthetic materials, so suitable for people allergic to chrome
- all sole materials are free of silicones, plasticisers and other paint wetting impairment substances
- BOA® Fit System (consisting of a micro-adjustable dial, super-strong lightweight laces and low friction lace guides) for a fast, effortless, precision fit (shoe 9558)

Protection features:

- meets the ESD specification with volume resistance under 35 megaohms
- 100% metal-free uvex xenova® safety toe cap – compact design, anatomical shape, good lateral stability, no thermal conductivity
- penetration-resistant, non-metallic midsole in accordance with the current safety standards, does not restrict flexibility of the shoe (shoe 9558)
- ergonomically designed outsole made from dual density polyurethane with excellent slip resistance
- reflective elements for better visibility

Comfort features:

- lightweight with excellent shock-absorbing properties
- outstanding wearer comfort thanks to a newly developed last and climate-optimised, breathable materials, plus perforated upper
- removable antistatic comfortable insole, with a moisture transport system and additional shock absorption around the heel and forefoot
- soft padding on tongue and collar

Sustainability:

- partly made from recycled materials in order to conserve resources
- free from harmful substances according to our restricted substances list

Areas of application:

- medium applications

uvex 2 xenova®	Perforated shoe	Perforated shoe	Perforated shoe	Perforated shoe
Art. no. Width 10	95547	95581	95607	95057
Art. no. Width 11	95548	95582	95608	95058
Art. no. Width 12	95549	95583	95609	95059
Standard	EN ISO 20345:2011	EN ISO 20345:2011	EN ISO 20345:2011	EN ISO 20345:2011
	S1 SRC	S1 P SRC	S1 SRC	S1 SRC
Upper	microvelour	microvelour	microvelour	microvelour
Lining	distance mesh lining	distance mesh lining	distance mesh lining	distance mesh lining
Sizes	38 to 52	38 to 52	38 to 52	38 to 52
Order unit	PR	PR	PR	PR

Safety Footwear

uvex 2 xenova®



95577
95578
95579



95687
95688
95689



95087
95088
95089

clima zone



uvex 2 xenova® · Shoe S2 SRC

General features:

- lightweight, modern S2 safety shoe
- made from synthetic materials, so suitable for people allergic to chrome
- all sole materials are free of silicones, plasticisers and other paint wetting impairment substances

Protection features:

- meets the ESD specification with volume resistance under 35 megaohms
- 100% metal-free uvex xenova® safety toe cap – compact design, anatomical shape, good lateral stability, no thermal conductivity
- ergonomically designed outsole made from dual density polyurethane with excellent slip resistance
- reflective elements for better visibility

Comfort features:

- lightweight with excellent shock-absorbing properties
- outstanding wearer comfort thanks to a newly developed last and climate-optimised, breathable materials
- removable antistatic comfortable insole, with a moisture transport system and additional shock absorption around the heel and forefoot
- soft padding on dust tongue and collar

Sustainability:

- free from harmful substances according to our restricted substances list

Areas of application:

- medium applications



uvex 2 xenova®	Shoe	Shoe	Shoe
Art. no. Width 10	95577	95687	95087
Art. no. Width 11	95578	95688	95088
Art. no. Width 12	95579	95689	95089
Standard	EN ISO 20345:2011	EN ISO 20345:2011	EN ISO 20345:2011
	S2 SRC	S2 SRC	S2 SRC
Upper	microvelour	microvelour	microvelour
Lining	distance mesh lining	distance mesh lining	distance mesh lining
Sizes	38 to 52	38 to 52	38 to 52
Order unit	PR	PR	PR

Safety Footwear

uvex 2 xenova®



All S3 versions with
PU-coated leather
scuffcap



S3 | 95551
95552
95553

S2 | 95557
95558
95559



S3 | 95641
95642
95643

S2 | 95647
95648
95649



S3 | 95061
95062
95063

S2 | 95067
95068
95069

clima zone



uvex 2 xenova® · Shoe S2 SRC/S3 SRC

General features:

- extremely lightweight, versatile S2 and S3 safety shoe
- upper over the toe cap lasts longer thanks to the PU-coated leather scuffcap (S3 models)
- all sole materials are free of silicones, plasticisers and other paint wetting impairment substances
- heat-resistant loop lacing system

Protection features:

- meets the ESD specification with volume resistance under 35 megaohms
- 100% metal-free uvex xenova® safety toe cap – compact design, anatomical shape, good lateral stability, no thermal conductivity
- penetration-resistant, non-metallic midsole in accordance with the current safety standards, does not restrict flexibility of the shoe (S3 models)
- ergonomically designed outsole made from dual density polyurethane with excellent slip resistance
- reflective elements for better visibility

Comfort features:

- lightweight with excellent shock-absorbing properties
- outstanding wearer comfort thanks to a newly developed last and climate-optimised, breathable materials
- removable antistatic comfortable insole, with a moisture transport system and additional shock absorption around the heel and forefoot
- soft padding on dust tongue and collar

Sustainability:

- partly made from recycled materials in order to conserve resources
- free from harmful substances according to our restricted substances list

Areas of application:

- medium applications

uvex 2 xenova®	Shoe	Shoe	Shoe	Shoe	Shoe	Shoe
Art. no. Width 10	95551	95557	95641	95647	95061	95067
Art. no. Width 11	95552	95558	95642	95648	95062	95068
Art. no. Width 12	95553	95559	95643	95649	95063	95069
Standard	EN ISO 20345:2011	EN ISO 20345:2011	EN ISO 20345:2011	EN ISO 20345:2011	EN ISO 20345:2011	EN ISO 20345:2011
Upper	S3 SRC	S2 SRC	S3 SRC	S2 SRC	S3 SRC	S2 SRC
	water-repellent, full-grain leather	water-repellent, full-grain leather	water-repellent, full-grain leather	water-repellent, full-grain leather	water-repellent, full-grain leather	water-repellent, full-grain leather
Lining	distance mesh lining	distance mesh lining	distance mesh lining	distance mesh lining	distance mesh lining	distance mesh lining
Sizes	38 to 52	38 to 52	38 to 52	38 to 52	38 to 52	38 to 52
Order unit	PR	PR	PR	PR	PR	PR

Safety Footwear

uvex 2 xenova®



uvex 2 xenova® · Boot S3 SRC · Lace-up boot S2 SRC/S3 SRC

General features:

- extremely lightweight, versatile S2 and S3 lace-up safety boot
- upper over the toe cap lasts longer thanks to the PU-coated leather scuffcap (S3 models)
- all sole materials are free of silicones, plasticisers and other paint wetting impairment substances
- heat-resistant loop lacing system and two pairs of lacing hooks
- BOA® Fit System (consisting of a micro-adjustable dial, super-strong lightweight laces and low friction lace guides) for a fast, effortless, precision fit (boot 9569)

Protection features:

- meets the ESD specification with volume resistance under 35 megaohms
- 100% metal-free uvex xenova® safety toe cap – compact design, anatomical shape, good lateral stability, no thermal conductivity
- penetration-resistant, non-metallic midsole in accordance with the current safety standards, does not restrict flexibility of the shoe (S3 models)

- ergonomically designed outsole made from dual density polyurethane with excellent slip resistance
- reflective elements for better visibility

Comfort features:

- lightweight with excellent shock-absorbing properties
- outstanding wearer comfort thanks to a newly developed last and climate-optimised, breathable materials
- removable antistatic comfortable insole, with a moisture transport system and additional shock absorption around the heel and forefoot
- soft padding on dust tongue and collar

Sustainability:

- partly made from recycled materials in order to conserve resources
- free from harmful substances according to our restricted substances list

Areas of application:

- medium applications

uvex 2 xenova®	Boot	Lace-up boot	Lace-up boot	Lace-up boot	Lace-up boot	Lace-up boot	Lace-up boot
Art. no. Width 10	95691	95561	95567	95661	95667	95071	95077
Art. no. Width 11	95692	95562	95568	95662	95668	95072	95078
Art. no. Width 12	95693	95563	95569	95663	95669	95073	95079
Standard	EN ISO 20345:2011	EN ISO 20345:2011	EN ISO 20345:2011	EN ISO 20345:2011	EN ISO 20345:2011	EN ISO 20345:2011	EN ISO 20345:2011
	S3 SRC	S3 SRC	S2 SRC	S3 SRC	S2 SRC	S3 SRC	S2 SRC
Upper	water-repellent, full-grain leather	water-repellent, full-grain leather	water-repellent, full-grain leather	water-repellent, full-grain leather	water-repellent, full-grain leather	water-repellent, full-grain leather	water-repellent, full-grain leather
Lining	distance mesh lining	distance mesh lining	distance mesh lining	distance mesh lining	distance mesh lining	distance mesh lining	distance mesh lining
Sizes	38 to 52	38 to 52	38 to 52	38 to 52	38 to 52	38 to 52	38 to 52
Order unit	PR	PR	PR	PR	PR	PR	PR

You can find more information on uvex medicare on pages 385 to 393

uvex

uvex 2 trend – safety and comfort redefined

Add a splash of colour to your day.

Whether in the assembly hall or on the production line, indoors or outdoors:

uvex 2 trend safety footwear range is suitable for medium applications (S1-S3) and incorporates numerous proven technologies at an affordable price. The uvex anti-twist heel cap for increased stability to prevent ankle twisting and the high-quality outsole materials combined with a sporty look and bold colours make this footwear appealing to wear. The result: maximum comfort and reliable safety.



Affordable Quality and Comfort

Sporty design

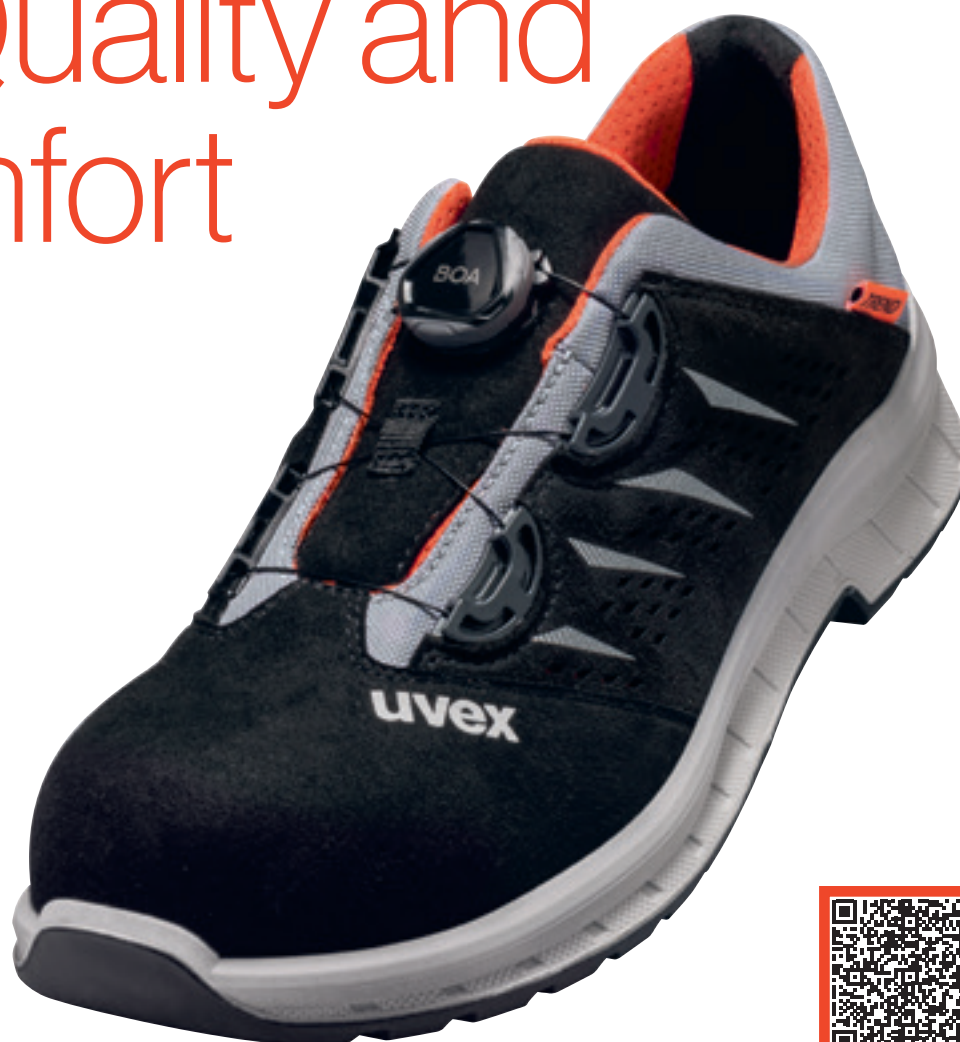
Contemporary colours and a long, flexible lacing area give the uvex 2 trend range a sporty look and a high degree of wearer acceptance.

Greater visibility

Reflective elements provide greater visibility – and therefore safety – even in poor light conditions.

Pleasant foot climate

The breathable, chrome-free microvelour material ensures a pleasant foot climate at all times, even during prolonged periods of use.



clima zone



Orthopaedic solutions in accordance with German DGUV 112-191* and Austrian ONORM Z1259



You can find more information at www.uvex-safety.com/uvex2trend



First-class wearer comfort

The midsole follows the lines of the arch, making the safety shoes especially comfortable to wear.



Safe slip resistance

The ergonomic design of the outsole supports the natural rolling motion of the foot. The new outsole profiles offer the best grip on almost any surface.



Sturdy scuffcap **

The directly moulded PU scuffcap on the S3 version reliably protects the upper against wear, especially during tasks that require kneeling.



Reliable protection against twisting

The innovative uvex anti-twist heel cap gives the foot extra support to avoid painful twisting.

* formerly BGR 191 ** on selected models

Safety Footwear

uvex 2 trend



S1 P | 69361
69362
69363

S1 | 69367
69368
69369



69061
69062
69063



69461
69462
69463

clima zone



uvex 2 trend · Sandal S1 SRC/S1 P SRC

General features:

- sporty S1 and S1 P safety sandal with a wide fit
- breathable microvelour is made from synthetic materials, so suitable for people allergic to chrome
- all sole materials are free of silicones, plasticisers and other paint wetting impairment substances
- double, individually adjustable counter-traction hook and loop straps

Protection features:

- meets the ESD specification with volume resistance under 35 megaohms
- reliable protection for the wearer and material: penetration-resistant steel midsole (S1 P models), steel toe cap and stabilising uvex anti-twist heel cap to prevent ankle twisting
- ergonomically designed outsole made from dual density polyurethane with excellent slip resistance
- reflective elements for better visibility

Comfort features:

- ideal foot climate constantly maintained due to uvex climazone: highly breathable lining and upper with perforation and comfortable climatic insole with moisture transport system
- soft, comfortable fit with no pressure points – with soft padding on the collar and a padded tongue
- removable antistatic comfortable insole, with a moisture transport system and additional shock absorption around the heel and forefoot

Sustainability:

- partly made from recycled materials in order to conserve resources
- free from harmful substances according to our restricted substances list

Areas of application:

- medium applications

uvex 2 trend	Sandal	Sandal	Sandal	Sandal
Art. no. Width 10	69361	69367	69061	69461
Art. no. Width 11	69362	69368	69062	69462
Art. no. Width 12	69363	69369	69063	69463
Standard	EN ISO 20345:2011	EN ISO 20345:2011	EN ISO 20345:2011	EN ISO 20345:2011
	S1 P SRC	S1 SRC	S1 P SRC	S1 P SRC
Upper	microvelour	microvelour	microvelour	microvelour
Lining	distance mesh lining	distance mesh lining	distance mesh lining	distance mesh lining
Sizes	36 to 52	36 to 52	38 to 52	38 to 52
Order unit	PR	PR	PR	PR

Safety Footwear

uvex 2 trend


69381
69382
69383

BOA


69081
69082
69083

BOA



S1 P

69371
69372
69373

S1

69377
69378
69379

69077
69078
69079

69477
69478
69479


clima zone



uvex 2 trend · Perforated shoe S1 SRC/S1 P SRC

General features:

- sporty S1 and S1 P safety shoe with a wide fit
- breathable microvelour is made from synthetic materials, so suitable for people allergic to chrome
- all sole materials are free of silicones, plasticisers and other paint wetting impairment substances
- BOA® Fit System (consisting of a micro-adjustable dial, super-strong lightweight laces and low friction lace guides) for a fast, effortless, precision fit (6938 and 6908)

Protection features:

- meets the ESD specification with volume resistance under 35 megaohms
- reliable protection for the wearer and material: penetration-resistant steel midsole (S1 P models), steel toe cap and stabilising uvex anti-twist heel cap to prevent ankle twisting
- ergonomically designed outsole made from dual density polyurethane with excellent slip resistance
- reflective elements for better visibility

Comfort features:

- ideal foot climate constantly maintained due to uvex climazone: highly breathable lining and upper with perforation and comfortable climatic insole with moisture transport system
- soft, comfortable fit with no pressure points – with soft padding on the collar and a padded tongue
- removable antistatic comfortable insole, with a moisture transport system and additional shock absorption around the heel and forefoot

Sustainability:

- partly made from recycled materials in order to conserve resources
- free from harmful substances according to our restricted substances list

Areas of application:

- medium applications



uvex 2 trend	Perforated shoe	Perforated shoe	Perforated shoe	Perforated shoe	Perforated shoe	Perforated shoe
Art. no. Width 10	69371	69377	69381	69077	69081	69477
Art. no. Width 11	69372	69378	69382	69078	69082	69478
Art. no. Width 12	69373	69379	69383	69079	69083	69479
Standard	EN ISO 20345:2011	EN ISO 20345:2011	EN ISO 20345:2011	EN ISO 20345:2011	EN ISO 20345:2011	EN ISO 20345:2011
	S1 P SRC	S1 SRC	S1 P SRC	S1 SRC	S1 P SRC	S1 SRC
Upper	microvelour	microvelour	microvelour	microvelour	microvelour	microvelour
Lining	distance mesh lining	distance mesh lining	distance mesh lining	distance mesh lining	distance mesh lining	distance mesh lining
Sizes	36 to 52	36 to 52	36 to 52	38 to 52	38 to 52	38 to 52
Order unit	PR	PR	PR	PR	PR	PR

Safety Footwear
uvex 2 trend



69397
69398
69399



69097
69098
69099



69497
69498
69499

clima zone



uvex 2 trend · Shoe S2 SRC

General features:

- sporty S2 safety shoe with a wide fit
- breathable microvelour is made from synthetic materials, so suitable for people allergic to chrome
- all sole materials are free of silicones, plasticisers and other paint wetting impairment substances

Protection features:

- meets the ESD specification with volume resistance under 35 megaohms
- reliable protection for the wearer and material: steel toe cap and stabilising uvex anti-twist heel cap to prevent ankle twisting
- ergonomically designed outsole made from dual density polyurethane with excellent slip resistance
- reflective elements for better visibility

Comfort features:

- ideal foot climate constantly maintained due to uvex climazone: highly breathable lining and upper, and comfortable climatic insole with moisture transport system
- soft, comfortable fit with no pressure points – with soft padding on the collar and a padded tongue
- removable antistatic comfortable insole, with a moisture transport system and additional shock absorption around the heel and forefoot

Sustainability:

- partly made from recycled materials in order to conserve resources
- free from harmful substances according to our restricted substances list

Areas of application:

- medium applications

uvex 2 trend	Shoe	Shoe	Shoe
Art. no. Width 10	69397	69097	69497
Art. no. Width 11	69398	69098	69498
Art. no. Width 12	69399	69099	69499
Standard	EN ISO 20345:2011 S2 SRC	EN ISO 20345:2011 S2 SRC	EN ISO 20345:2011 S2 SRC
Upper	microvelour	microvelour	microvelour
Lining	distance mesh lining	distance mesh lining	distance mesh lining
Sizes	36 to 52	38 to 52	38 to 52
Order unit	PR	PR	PR

Safety Footwear

uvex 2 trend



clima zone



uvex 2 trend · Shoe S2/S3 SRC · Lace-up boot S2/S3 SRC

General features:

- sporty S2 and S3 safety shoe/boot with a wide fit
- all sole materials are free of silicones, plasticisers and other paint wetting impairment substances
- dirt-resistant, smooth-running and heat-resistant lacing system
- upper over the toe cap is protected by the foamed scuffcap (S3 models)

Protection features:

- meets the ESD specification with volume resistance under 35 megaohms
- reliable protection for the wearer and material: penetration-resistant heel midsole (S3 models), steel toe cap and stabilising uvex anti-twist heel cap to prevent ankle twisting
- ergonomically designed outsole made from dual density polyurethane with excellent slip resistance
- reflective elements for better visibility

Comfort features:

- ideal foot climate constantly maintained due to uvex climazone: highly breathable lining and upper, and comfortable climatic insole with moisture transport system
- soft, comfortable fit with no pressure points – with soft padding on the collar and a padded tongue
- removable antistatic comfortable insole, with a moisture transport system and additional shock absorption around the heel and forefoot

Sustainability:

- partly made from recycled materials in order to conserve resources
- free from harmful substances according to our restricted substances list

Areas of application:

- medium applications

uvex 2 trend	Shoe	Shoe	Lace-up boot	Lace-up boot
Art. no. Width 10	69341	69347	69351	69357
Art. no. Width 11	69342	69348	69352	69358
Art. no. Width 12	69343	69349	69353	69359
Standard	EN ISO 20345:2011 S3 SRC	EN ISO 20345:2011 S2 SRC	EN ISO 20345:2011 S3 SRC	EN ISO 20345:2011 S2 SRC
Upper	Full-grain soft leather	Full-grain soft leather	Full-grain soft leather	Full-grain soft leather
Lining	distance mesh lining	distance mesh lining	distance mesh lining	distance mesh lining
Sizes	36 to 52	36 to 52	36 to 52	36 to 52
Order unit	PR	PR	PR	PR

uvex

uvex 3 – safety and comfort made easy.

The uvex 3 has been specially developed for the extreme demands faced in heavy applications. It combines necessary robustness with a sporty and dynamic design. Equipped with the latest uvex technologies, the uvex 3 reliably protects the wearer while providing high levels of comfort.

**Hard work.
Easy going.**



Sustainability – recycled insole

The uvex 3 is sustainably produced and is free from harmful substances according to our restricted substances list. What's more, the insole is made of 100% recycled fibres and foam.



Extraordinary sensitivity

A high degree of sensitivity and the flexibility of the sole are especially important when operating machines controlled by foot.



uvex waterstop technology

uvex waterstop technology reliably protects against water penetration for four times longer than required by the standard.



uvex i-PUREnrj technology

uvex's innovative new polyurethane sole technology – uvex i-PUREnrj – returns the landing energy over the entire sole unit back to the wearer, redefining shock absorption and stability. The sole of the uvex 3 features a special anti-fatigue effect thanks to 68% energy return in the forefoot area, 65% energy return underneath the heel and the high shock absorption level of 44 joules.

bionom x
clima zone



Orthopaedic solutions in accordance with German DGUV 112-191* and Austrian ONORM Z1259

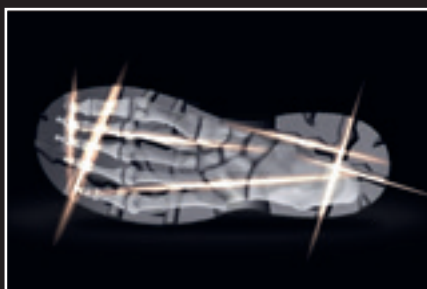


uvex anklepro

Provides excellent protection against painful impacts in the ankle area.

uvex lace lock

Optimised lacing for increased stability with locking lace hooks.



uvex bionom x

The uvex bionom x principle is an approach to creating new products that combines the essential biomechanical functions of the body with the functions of the footwear, thus creating a harmonious unit consisting of body, footwear and environment. Only when our body achieves its maximum performance level can it protect us from injury in the best possible way. uvex bionom x was developed in collaboration with our biomechanics expert Dr Caleb Wegener from the uvex safety group in Australia.



Safety Footwear

uvex 3



68741
68742
68743

**bionom x
clima zone**



uvex 3 · Lace-up boot S3 CI SRC

General features:

- robust, modern and lightweight lace-up safety boot with extra-wide fit
- all sole materials are free of silicone, plasticisers and other substances that interfere with wetting agents
- foamed polyurethane scuffcap helps increase the product life of the outer shoe material covering the toe cap
- smooth-running and dirt-resistant lacing system

Protection features:

- new, innovative uvex i-PUREnrj sole technology provides outstanding shock-absorption properties at the forefoot and heel, excellent rebound energy over the entire midsole and high levels of stability thanks to the foam heel basket
- innovative uvex bionom x design creates a biomechanical symbiosis between the foot, the upper, the sole and the floor
- water-repellent leather with uvex waterstop technology for reliable protection against splashing water during rain and cleaning work
- uvex anklepro extremely shock-absorbent ankle foam provides protection against painful impacts
- uvex lacelock fastening hook for a secure hold and more stability when lacing up the shoe
- meets the ESD specification with volume resistance under 35 megaohms
- penetration-resistant, non-metallic midsole in accordance with the current safety standards, does not restrict the flexibility of the shoe
- anatomical shaped, foamed polyurethane heel basket for stability and protection against ankle twisting
- 100% metal-free uvex xenova® safety toe cap for more toe room and an optimum fit – compact design, anatomical shape, good lateral stability and no thermal conductivity

- ergonomically designed outsole made from dual-density polyurethane with a rough, self-cleaning tread and excellent slip resistance
- secure grip when climbing on ladders due to the stabilising arch support
- reflective elements for optimum visibility

Comfort features:

- outstanding wearer comfort thanks to a newly developed last and climate-optimised, breathable materials
- virtually seam-free construction made from water-repellent leather to eliminate pressure points
- removable anti-static comfortable insole with a moisture transport system and additional shock absorption around the heel and forefoot
- soft padding on the leather dust tongue and collar made from abrasion-resistant textile

Sustainability:

- partly made from recycled materials in order to conserve resources
- free from harmful substances according to our restricted substances list

Areas of application:

- heavy applications

► **uvex recommends footwear with steel midsoles for demanding applications such as construction and construction-related industries.**

uvex 3	Lace-up boot
Art. no. Width 10	68741
Art. no. Width 11	68742
Art. no. Width 12	68743
Standard	EN ISO 20345:2011
	S3 CI SRC
Upper	water repellent leather
Lining	textile
Sizes	38 to 52
Order unit	PR

Safety Footwear

uvex 3



68721
68722
68723



68731
68732
68733

**bionom x
clima zone**



uvex 3 · Lace-up boot S3 CI SRC

General features:

- robust, modern and lightweight lace-up safety boot with extra-wide fit
- all sole materials are free of silicone, plasticisers and other substances that interfere with wetting agents
- foamed polyurethane scuffcap helps increase the product life of the outer shoe material covering the toe cap
- smooth-running and dirt-resistant lacing system

Protection features:

- new, innovative uvex i-PUREnrj sole technology provides outstanding shock-absorption properties at the forefoot and heel, excellent rebound energy over the entire midsole and high levels of stability thanks to the foam heel basket
- innovative uvex bionom x design creates a biomechanical symbiosis between the foot, the upper, the sole and the floor
- water-repellent leather with uvex waterstop technology for reliable protection against splashing water during rain and cleaning work
- uvex anklepro extremely shock-absorbent ankle foam provides protection against painful impacts
- uvex lacelock fastening hook for a secure hold and more stability when lacing up the shoe
- meets the ESD specification with volume resistance under 35 megaohms
- reliable protection for the wearer and material: penetration-resistant steel midsole
- anatomical shaped, foamed polyurethane heel basket for stability and protection against ankle twisting
- 100% metal-free uvex xenova® safety toe cap for more toe room and an optimum fit – compact design, anatomical shape, good lateral stability and no thermal conductivity

- ergonomically designed outsole made from dual-density polyurethane with a rough, self-cleaning tread and excellent slip resistance
- secure grip when climbing on ladders due to the stabilising arch support
- reflective elements for optimum visibility

Comfort features:

- outstanding wearer comfort thanks to a newly developed last and climate-optimised, breathable materials
- virtually seam-free construction made from water-repellent leather to eliminate pressure points
- removable anti-static comfortable insole with a moisture transport system and additional shock absorption around the heel and forefoot
- soft padding on the leather dust tongue and collar insert made from perforated leather

Sustainability:

- partly made from recycled materials in order to conserve resources
- free from harmful substances according to our restricted substances list

Areas of application:

- heavy applications

► **uvex recommends footwear with steel midsoles for demanding applications such as construction and construction-related industries.**



uvex 3	Lace-up boot	Lace-up boot
Art. no. Width 10	68721	68731
Art. no. Width 11	68722	68732
Art. no. Width 12	68723	68733
Standard	EN ISO 20345:2011 S3 CI SRC	EN ISO 20345:2011 S3 CI SRC
Upper	water repellent leather	water repellent leather
Lining	textile	textile
Sizes	38 to 52	38 to 52
Order unit	PR	PR

Safety Footwear
uvex quatro STX



sympatex®
clima zone

uvex quatro STX · Shoe S3 WR HI CI HRO SRC · Lace-up boot S3 WR HI CI HRO SRC

- General features:
- robust and modern waterproof safety shoe/boot in S3 WR with extra-wide fit
 - smooth-running, dirt-resistant lacing system
 - highly resistant, water-repellent leather upper with foam scuffcap that also helps protect the material
- Protection features:
- waterproof and breathable thanks to sympatex® lining (WR marking)
 - dual-component sole, comprising shockabsorbing PU midsole and resistant, anti-slip rubber outsole
 - outsole is highly resistant to chemicals and cut-resistant while also providing optimal protection against cold and heat
 - reliable protection for wearers: penetrationresistant steel midsole, steel toe cap and the stabilising heel cap to prevent ankle twisting
 - HI marking for heat-insulating substructure (tested in accordance with standard at +150°C)
 - CI label for cold-insulating footwear design
 - HRO marking for heat-resistant substructure for brief exposure up to +300°C

- Comfort features:
- ideal foot climate constantly maintained due to uvex climazone: breathable sympatex® membrane lining and comfortable climatic insole with moisture transport system
 - breathable yet waterproof thanks to sympatex® lining
 - soft, padded collar (boot), soft, padded collar (shoe) and padded dust tongue
 - removable antistatic insole for optimum foot support
- Sustainability:
- partly made from recycled materials in order to conserve resources
 - free from harmful substances according to our restricted substances list
- Areas of application:
- heavy-duty applications

► **uvex recommends footwear with steel midsoles for demanding applications such as construction and construction-related industries.**

uvex quatro STX	Shoe	Lace-up boot
Art. no. Width 11	84062	84072
Standard	EN ISO 20345:2011	EN ISO 20345:2011
	S3 WR HI CI HRO SRC	S3 WR HI CI HRO SRC
Upper	sturdy water repellent nappa leather	sturdy water repellent nappa leather
Lining	sympatex® laminate	sympatex® laminate
Sizes	38 to 48	38 to 48
Order unit	PR	PR

Safety Footwear

uvex quatro pro



uvex quatro pro · Shoe S3 SRC · Lace-up boot S3 SRC · Winter lace-up boot S3 CI SRC · Winter zip-up boot S3 CI SRC/S2 CI SRC

General features:

- sturdy, modern safety shoes with extra wide fit
- smooth-running, dirt-resistant lacing system (lace-up models)

Protection features:

- highly resistant, water-repellent upper leather with foam scuffcap helps protect the upper
- outdoor sole design provides a high level of stability with a heel brace, support in the arch area and a rough, non-slip, self-cleaning tread
- reliable protection for wearers: penetration-resistant steel midsole, steel toe cap and stabilising uvex anti-twist heel cap to prevent ankle twisting
- cold-insulating shoe design (CI label in accordance with EN ISO 20345) (winterboots)

Comfort features:

- ideal foot climate constantly maintained due to uvex climazone: breathable textile lining and comfortable climatic insole with a moisture transport system
- soft, padded collar and padded dust tongue
- easy to put on and take off with the zip fastener on the inside (84032, 84039)
- antistatic uvex 3D hydroflex® foam insole for optimal shock absorption around heel and forefoot

Sustainability:

- partly made from recycled materials in order to conserve resources
- free from harmful substances according to our restricted substances list

Areas of application:

- heavy application

► **uvex recommends footwear with steel midsoles for demanding applications such as construction and construction-related industries.**

uvex quatro STX	Shoe	Lace-up boot	Winter boot	Winter boot	Winter boot
Art. no. Width 11	84002	84012	84022	84032	84039
Standard	EN ISO 20345:2011	EN ISO 20345:2011	EN ISO 20345:2011	EN ISO 20345:2011	EN ISO 20345:2011
	S3 SRC	S3 SRC	S3 CI SRC	S3 CI SRC	S2 CI SRC
Upper	sturdy water repellent leather	sturdy water repellent leather	sturdy water repellent leather	sturdy water repellent leather	sturdy water repellent leather
Lining	textile	textile	textile	textile	textile
Sizes	38 to 50	38 to 50	38 to 50	38 to 50	38 to 50
Order unit	PR	PR	PR	PR	PR

Heckel safety shoes

Performance with style

A brand of the uvex group

Heckel, headquartered in France, has been a specialist in safety footwear since 1970 and is among the pioneers of the industry. Heckel has been part of the uvex group since 2001 and its products are distributed in over 30 countries.

Performance with style

Heckel stands for performance. When wearing Heckel safety shoes, users know they are fully protected and ready for the most extreme conditions. By not compromising on the quality and testing of our products, we guarantee the performance of our safety shoes and the protection of the professionals who wear them. Heckel safety shoes protect against mechanical and chemical risks as well as heat, cold and moisture, while emphasising style.

MACSOLE® technology

Being a true specialist in rubber soles, Heckel has been developing its own technology for more than 20 years: MACSOLE®. Made from an exclusive mixture of nitrile rubbers, MACSOLE® soles offer unrivalled performance in slip resistance, durability and comfort.

MACSOLE® ADVENTURE 3.0

OFF THE
BEATEN TRACK



Resistant and durable

MACSOLE® ADVENTURE 3.0 rubber soles guarantee unrivalled performance in slip resistance and durability and are also resistant to contact heat.



Designed for outdoor use

With a scuffcap made from highly abrasion-resistant rubber and the Agile Ankle Guard support system, these safety shoes are suitable for outdoor work and difficult surfaces.



Comfortable & wear-resistant

The natural elastic properties of rubber combined with innovative MACABSORB technology ensure shock absorption that is 85% higher than the standard for durable wearer comfort.



Safety Footwear



67323

SRC



67313

HRO

MACCROSSROAD 3.0 S3 LOW + HIGH S3 CI HI HRO SRC



MACSOLE® ADVENTURE 3.0 rubber **sole** with EVA MACABSORB inserts at the heel and forefoot | liquid-resistant oiled full-grain leather **upper** with Agile Ankle Guard reinforced heel and sides | polyester 3D mesh **lining** | non-metallic **toe cap** | non-metallic **penetration-resistant sole** | **hygienic insole** made from 85% recycled PU foam with shock absorption at the front and heel

Areas of application: heavy application

Partly made from recycled materials in order to conserve resources |
Free from harmful substances according to our restricted substances list

	MACCROSSROAD 3.0 S3 LOW	MACCROSSROAD 3.0 S3 HIGH
Art. no.	67323	67313
Standard	EN ISO 20345:2011 S3 CI HI HRO SRC	EN ISO 20345:2011 S3 CI HI HRO SRC
Colours	black, lime	black, lime
Sizes	36 to 48	36 to 48
Weight	650 g	700 g
Order unit	PR	PR

Safety Footwear



67353



67363



MACCROSSROAD 3.0 S3 HIGH META S3 M CI HI HRO SRC + HIGH BOA S3 CI HI HRO SRC

MACSOLE® ADVENTURE 3.0 rubber **sole** with EVA MACABSORB inserts at the heel and forefoot | liquid-resistant oiled full-grain leather **upper** with Agile Ankle Guard reinforced heel and sides | BOA® Fit System easy, quick fastening solution with personalised adjustment (BOA) | D3O 100 J energy absorption highly flexible (META) **metatarsal protection** | polyester 3D mesh **lining** | non-metallic **toe cap** | non-metallic **penetration-resistant sole** | **hygienic insole** made from 85% recycled PU foam with shock absorption at the front and heel

Areas of application: heavy application

Partly made from recycled materials in order to conserve resources | Free from harmful substances according to our restricted substances list

	MACCROSSROAD 3.0 S3 HIGH META	MACCROSSROAD 3.0 S3 HIGH BOA
Art. no.	67353	67363
Standard	EN ISO 20345:2011 S3 M CI HI HRO SRC	EN ISO 20345:2011 S3 CI HI HRO SRC
Colours	black, lime	black, blue
Sizes	36 - 48	36 - 48
Weight	740 g	700 g
Order unit	PR	PR

Safety Footwear



67533



67153

MACSTOPAC 300 S3 LOW + HIGH S3 HRO SRC

MACSOLE® PLUS 2.0 rubber **sole** | liquid-resistant oiled full-grain leather **upper** | distance mesh textile **lining** | non-metallic **toe cap** | non-metallic **penetration-resistant sole** | high moisture-absorbing **hygienic insole** made from 100% recycled PU foam

Areas of application: heavy application

Partly made from recycled materials in order to conserve resources |
Free from harmful substances according to our restricted substances list



	MACSTOPAC 300 S3 LOW	MACSTOPAC 300 S3 HIGH
Art. no.	67533	67153
Standard	EN ISO 20345:2011 S3 HRO SRC	EN ISO 20345:2011 S3 HRO SRC
Colours	black	black
Sizes	37 - 48	37 - 48
Weight	640 g	690 g
Order unit	PR	PR

Safety Footwear



62993

ASPHALT



62963

EN 20349



MACSOLE® 1.0 NTX SBP CI HI HRO SRC + **WLD LOW** S3 CI HI-1 HRO WG SRC



MACSOLE® 1.0 smooth rubber **sole** (NTX) MACSOLE® 1.0 **rubber** (WLD LOW) | liquid-resistant pigmented full-grain leather **upper** | fire-resistant Kevlar® thread seams, pigmented full-grain leather protective flap, double Velcro® fastening (WLD LOW) | mesh **lining** | non-metallic **toe cap** | stainless steel **penetration-resistant sole** | aluminised **hygienic insole** with thermal insulation (NTX) and PU insole (WLD LOW)

Areas of application: model for surfacing work (NTX), welding, steelworking, protection against metal projection (WLD LOW)

Free from harmful substances according to our restricted substances list

	MACSOLE® 1.0 NTX	MACSOLE® 1.0 WLD LOW
Art. no.	62993	62963
Standard	EN ISO 20345:2011 SBP WRU HI HRO SRA	EN ISO 20349-2:2017 S3 CI HI-1 HRO WG SRC
Colours	black	black
Sizes	38 - 48	38 - 48
Weight	780 g	810 g
Order unit	PR	PR



Safety Footwear

Accessories · Inlay soles



clima zone

Comfortable climatic insole uvex 1 G2 · uvex 3 · uvex 1 sport · uvex 1 sport white · uvex 1 sport NC · uvex 1 business · uvex 2 trend · uvex 1 · uvex 2 · uvex 2 construction · uvex 2 xenova®

- improved full-surface shock absorption
- ultra-breathable, moisture-absorbing and quick-drying materials
- shock absorption zones support natural movement of the foot
- non-irritating, comfortable surface structure
- antistatic properties
- arch support
- washable, hand wash at 30°C

Accessories - Inlay soles	Insole uvex 1 G2, uvex 3	Insole uvex 1 sport, uvex 1 sport white	Insole uvex 1 sport NC	Insole uvex 1 business	Insole uvex 2 trend	Insole uvex 1, uvex 2, uvex 2 construction, uvex 2 xenova®
Art. no. width 10	94907	95797	95177	95157	95187	95347
Art. no. width 11	94908	95798	95178	95158	95188	95348
Art. no. width 12	94909	95799	95179	95159	95189	95349
Art. no. width 14	94900	95790	-	-	-	95340
Version	for uvex 1 G2, uvex 3	for uvex 1 sport, uvex 1 sport white	for uvex 1 sport NC	for uvex 1 business	for uvex 2 trend	for uvex 1, uvex 2, uvex 2 construction, uvex 2 xenova®
Sizes	35 to 52	35 to 52	35 to 52	39 to 52	36 to 52	35 to 52
Order unit	PR	PR	PR	PR	PR	PR

Safety Footwear

Accessories · Inlay soles



LOW

Art. no. 95281
Art. no. 95284
Art. no. 95287
Sizes 35 to 52



MEDIUM

Art. no. 95282
Art. no. 95285
Art. no. 95288
Sizes 35 to 52



HIGH

Art. no. 95283
Art. no. 95286
Art. no. 95289
Sizes 35 to 52



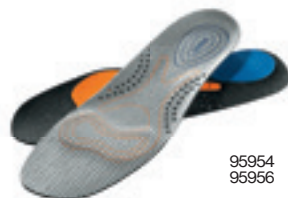
clima zone

Comfortable tune-up

Antistatic insole concept for use in safety footwear. Designed to increase wearer comfort and enhance ergonomics by providing optimum support for the arches of the feet, helping to reduce foot fatigue.

- three different arch support versions:
 - high, medium, low
- very good cushioning for comfort underfoot
- reduces symptoms of fatigue
- prevents pressure points
- non-irritating, comfortable surface structure
- breathable and absorbs moisture
- anti-bacterial
- antistatic
- suitable for ESD footwear
- hand-washable at 30°C
- certified for use in the following uvex safety shoes

Accessories - Inlay soles	uvex tune-up comfortable insole	uvex tune-up comfortable insole	uvex tune-up comfortable insole
Art. no. arch support low	95281	95284	95287
Art. no. arch support medium	95282	95285	95288
Art. no. arch support high	95283	95286	95289
Version certified in accordance with EN ISO 20345:2011 for the safety shoe types	uvex 1, uvex 2, uvex 2 xenova®	uvex 1 sport	uvex 1 G2
Sizes	35 to 52	35 to 52	35 to 52
Order unit	PR	PR	PR



95954
95956

clima zone

Comfortable climatic insole uvex 3D hydroflex® foam

- full shock absorption for the foot with additional shock-absorbing elements around the heel and under the forefoot to ensure comfort in exposed pressure zones
- ultra breathable and moisture-absorbent materials
- perforation for improved breathability
- shock absorption zones support natural foot movement
- non-irritating, comfortable surface structure
- antistatic properties
- arch support

Accessories - Inlay soles	Insole uvex quatro pro, uvex origin	Insole uvex motion style
Art. no. width 11	95954	95956
Version	for uvex quatro pro, uvex origin	for uvex motion style
Sizes	38 to 50	36 to 50
Order unit	PR	PR



Safety Footwear

uvex care system



uvex nano shoe add on

footwear waterproofing for protection against moisture penetration and stains

The principle

Water-based uvex nano shoe "add on" waterproofing forms a colourless, invisible film on leather and textile surfaces which protects footwear from moisture penetration and water or oil stains. Although the technological expertise owes its origins to chemical nanotechnology, the product contains no actual nano particles. uvex nano shoe 'add on' makes footwear surfaces smooth so, that liquids simply run off. It does not alter the look or breathability of the impregnated material, irrespective of whether this is suede,

leather or textile. Contains no aggressive ingredients which might attack footwear surfaces.

How it works

- Protects from moisture penetration:
The speed at which moisture penetrates leather or textile surfaces which have been treated is significantly reduced. Water and oil simply run off.
- Maintains breathability:
uvex nano shoe 'add on' waterproofing does not affect the breathability of footwear surface materials.
- Improves cleaning
Footwear surfaces impregnated with uvex nano shoe 'add on' can be more easily cleaned, since water and oil stains cannot penetrate deep into the fabric.
- Long-lasting stain prevention:
Regular applications will significantly reduce repeated staining from water or oil-based liquids.

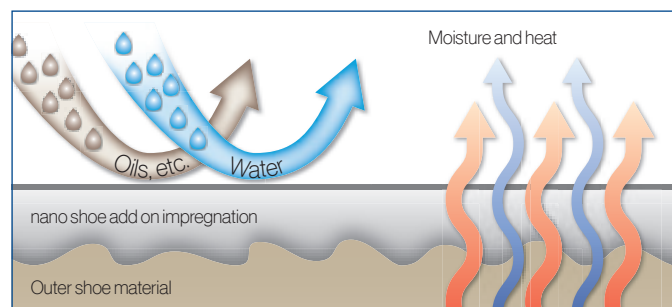
- No change to the look or feel of the surface:

The look or feel of footwear is not altered by the neutral uvex shoe 'add on' waterproofing. uvex nano shoe 'add on' is free from formaldehyde and phenol and contains no nano particles.

Application

- clean leather and textile surfaces thoroughly beforehand
- shake solution before use, then spray onto material to form a thin film over the surface (avoid drips forming)
- if necessary, wipe over excess liquid with a cloth to spread evenly
- leave to dry at room temperature for at least 12 hours
- repeat treatment as above when needed to maintain the effect

The nano shoe add on working principle



uvex nano shoe add on	
Art. no.	9698100
Content	100 ml
Order unit	PC



uvex nano shoe add in:

footwear disinfectant against foot odour and athlete's foot

The principle

uvex nano shoe 'add in' uses specially developed technology which releases controlled doses of active ingredients with long-lasting effect: The uvex nano shoe 'add in' disinfectant contains antimicrobial and antifungal active ingredients which eliminate bacteria and fungus over the longer term. Although this expertise owes its origins to chemical nanotechnology, the uvex nano shoe

'add in' does not contain any actual nano particles: The formula contains only active ingredients which are approved for use for a number of years and can be found in cosmetics (formaldehyde-free, phenol-free).

How it works

- Odour prevention:
Regular application of uvex nano shoe 'add in' in new shoes will prevent any build-up of odour from the outset. Unlike deodorants, which simply cover sweaty smells, this product deals with the underlying causes: bacteria.
- Ongoing deodorization:
Application of uvex nano shoe 'add in' will return footwear that has already been well worn to odour-neutral conditions.

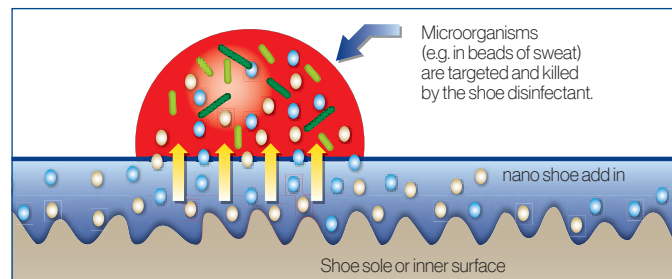
- Kills fungi:
Filamentous or yeast fungi are among the most common causes of skin diseases (such as athlete's foot) affecting the feet. uvex nano shoe 'add in' kills existing fungi and prevents reoccurrence.

Application

- for use on the inside surfaces of all footwear
- spray uvex nano shoe 'add in' (about 5-10 doses) into your footwear outside in the open air. After 15 minutes drying time, your shoes will be ready to wear
- recommended initial treatment of badly affected footwear: three applications per week
- regular use will prevent odours and fungus developing in the longer term

The nano shoe add in working principle

Controlled release of germicidal agents to protect against foot odour and athletes foot



uvex nano shoe add in	
Art. no.	9698300
Content	125 ml
Order unit	PC

Safety Footwear

Polymer boot · Accessories



94756



94766



98754

NORA safety boots S5 SRC

General features:

- long PVC safety boot

Protection features:

- free of plasticisers included on the SVHC Candidate List of the REACH Regulation
- resistant to oil, grease, fuel, alkalis, acids and disinfectants
- with steel toecap and midsole
- toe and heel reinforcements plus ankle protection
- antistatic

Comfort features:

- anatomically shaped lasts, prevent foot fatigue
- leg height 33 cm (for size 42 boot)
- long shaft, can be shortened
- anatomically shaped insole
- pull-off aid

uvex tricot liner socks

- kind to the skin
- extremely high level of moisture absorption
- washable at up to 30°C
- elastic



NORA safety boots S5 SRC		
Art. no.	94756	94766
Standard	EN ISO 20345:2011 S5 SRC	EN ISO 20345:2011 S5 SRC
Upper	PVC	PVC
Sizes	37 to 48	36 to 47
Order unit	PR	PR

uvex tricot liner socks	
Art. no.	98754
Sizes	39/40 to 47/48
Order unit	PR

Safety Footwear

Overview

Art. no.	Collection	Replacement insole	Page
64963	uvex motion 3XL	-	279
65001	uvex 2	95347	287
65002	uvex 2	95348	287
65003	uvex 2	95349	287
65004	uvex 2	95340	287
65011	uvex 2	95347	287
65012	uvex 2	95348	287
65013	uvex 2	95349	287
65014	uvex 2	95340	287
65021	uvex 2	95347	286
65022	uvex 2	95348	286
65023	uvex 2	95349	286
65024	uvex 2	95340	286
65031	uvex 2	95347	286
65032	uvex 2	95348	286
65033	uvex 2	95349	286
65034	uvex 2	95340	286
65081	uvex 2	95347	287
65082	uvex 2	95348	287
65083	uvex 2	95349	287
65084	uvex 2	95340	287
65091	uvex 2	95347	287
65092	uvex 2	95348	287
65093	uvex 2	95349	287
65094	uvex 2	95340	287
65101	uvex 2 construction	95347	289
65102	uvex 2 construction	95348	289
65103	uvex 2 construction	95349	289
65121	uvex 2 construction	95347	289
65122	uvex 2 construction	95348	289
65123	uvex 2 construction	95349	289
65131	uvex 2 construction	95347	289
65132	uvex 2 construction	95348	289
65133	uvex 2 construction	95349	289
65201	uvex 2 MACSOLE®	95347	285
65202	uvex 2 MACSOLE®	95348	285
65203	uvex 2 MACSOLE®	95349	285
65204	uvex 2 MACSOLE®	95340	285
65211	uvex 2 MACSOLE®	95347	285
65212	uvex 2 MACSOLE®	95348	285
65213	uvex 2 MACSOLE®	95349	285
65214	uvex 2 MACSOLE®	95340	285
65221	uvex 2 MACSOLE®	95347	284
65222	uvex 2 MACSOLE®	95348	284
65223	uvex 2 MACSOLE®	95349	284
65224	uvex 2 MACSOLE®	95340	284
65231	uvex 2 MACSOLE®	95347	284
65232	uvex 2 MACSOLE®	95348	284
65233	uvex 2 MACSOLE®	95349	284
65234	uvex 2 MACSOLE®	95340	284
65241	uvex 2 STX MACSOLE®	95347	283
65242	uvex 2 STX MACSOLE®	95348	283
65243	uvex 2 STX MACSOLE®	95349	283
65251	uvex 2 STX MACSOLE®	95347	283
65252	uvex 2 STX MACSOLE®	95348	283
65253	uvex 2 STX MACSOLE®	95349	283
65281	uvex 2 MACSOLE®	95347	285
65282	uvex 2 MACSOLE®	95348	285
65283	uvex 2 MACSOLE®	95349	285
65284	uvex 2 MACSOLE®	95340	285
65291	uvex 2 MACSOLE®	95347	285
65292	uvex 2 MACSOLE®	95348	285
65293	uvex 2 MACSOLE®	95349	285
65294	uvex 2 MACSOLE®	95340	285
65303	uvex 2 MACSOLE®	95349	284
65311	uvex 2 MACSOLE®	95347	284
65312	uvex 2 MACSOLE®	95348	284
65313	uvex 2 MACSOLE®	95349	284
65657	uvex 1	95347	267
65658	uvex 1	95348	267
65659	uvex 1	95349	267
65667	uvex 1	95347	268
65668	uvex 1	95348	268
65669	uvex 1	95349	268
65671	uvex 1 x-tended support	95347	273
65672	uvex 1 x-tended support	95348	273
65673	uvex 1 x-tended support	95349	273
65681	uvex 1 x-tended support	95347	272
65682	uvex 1 x-tended support	95348	272
65683	uvex 1 x-tended support	95349	272
65807	uvex 1 sport white	95797	264
65808	uvex 1 sport white	95798	264
65809	uvex 1 sport white	95799	264
65817	uvex 1 sport white	95797	264
65818	uvex 1 sport white	95798	264
65819	uvex 1 sport white	95799	264
65821	uvex 1 sport white	95797	264
65822	uvex 1 sport white	95798	264
65823	uvex 1 sport white	95799	264
65901	uvex 1 sport	95797	263
65902	uvex 1 sport	95798	263
65903	uvex 1 sport	95799	263

Art. no.	Collection	Replacement insole	Page
65904	uvex 1 sport	95790	263
65921	uvex 1 sport	95797	263
65922	uvex 1 sport	95798	263
65923	uvex 1 sport	95799	263
65924	uvex 1 sport	95790	263
65937	uvex 1 sport NC	95177	265
65938	uvex 1 sport NC	95178	265
65939	uvex 1 sport NC	95179	265
65940	uvex 1 sport	95790	263
65941	uvex 1 sport	95797	263
65942	uvex 1 sport	95798	263
65943	uvex 1 sport	95799	263
65944	uvex 1 sport	95790	263
65947	uvex 1 sport	95797	263
65948	uvex 1 sport	95798	263
65949	uvex 1 sport	95799	263
65957	uvex 1 sport NC	95177	265
65958	uvex 1 sport NC	95178	265
65959	uvex 1 sport NC	95179	265
65961	uvex 1 sport	95797	263
65962	uvex 1 sport	95798	263
65963	uvex 1 sport	95799	263
65964	uvex 1 sport	95790	263
65971	uvex 1 sport	95797	262
65972	uvex 1 sport	95798	262
65973	uvex 1 sport	95799	262
65974	uvex 1 sport	95790	262
65980	uvex 1 sport	95790	262
65987	uvex 1 sport	95797	262
65988	uvex 1 sport	95798	262
65989	uvex 1 sport	95799	262
65991	uvex 1 sport	95797	262
65992	uvex 1 sport	95798	262
65993	uvex 1 sport	95799	262
65994	uvex 1 sport	95790	262
68232	uvex 1 G2 planet	-	252
68242	uvex 1 G2 planet	-	252
68267	uvex 1 G2	94907	256
68268	uvex 1 G2	94908	256
68280	uvex 1 G2	94900	256
68287	uvex 1 G2	94907	256
68288	uvex 1 G2	94908	256
68289	uvex 1 G2	94909	256
68290	uvex 1 G2	94900	256
68297	uvex 1 G2	94907	256
68298	uvex 1 G2	94908	256
68299	uvex 1 G2	94909	256
68300	uvex 1 G2	94900	257
68307	uvex 1 G2	94907	257
68308	uvex 1 G2	94908	257
68309	uvex 1 G2	94909	257
68310	uvex 1 G2	94900	256
68317	uvex 1 G2	94907	256
68318	uvex 1 G2	94908	256
68319	uvex 1 G2	94909	256
68329	uvex 1 G2	94909	256
68330	uvex 1 G2	94900	257
68337	uvex 1 G2	94907	257
68338	uvex 1 G2	94908	257
68339	uvex 1 G2	94909	257
68341	uvex 1 G2	94907	254
68342	uvex 1 G2	94908	254
68343	uvex 1 G2	94909	254
68344	uvex 1 G2	94900	254
68361	uvex 1 G2	94907	254
68362	uvex 1 G2	94908	254
68363	uvex 1 G2	94909	254
68364	uvex 1 G2	94900	254
68371	uvex 1 G2	94907	254
68372	uvex 1 G2	94908	254
68373	uvex 1 G2	94909	254
68374	uvex 1 G2	94900	254
68381	uvex 1 G2	94907	255
68382	uvex 1 G2	94908	255
68383	uvex 1 G2	94909	255
68384	uvex 1 G2	94900	255
68391	uvex 1 G2	94907	255
68392	uvex 1 G2	94908	255
68393	uvex 1 G2	94909	255
68394	uvex 1 G2	94900	255
68401	uvex 1 G2	94907	255
68402	uvex 1 G2	94908	255
68403	uvex 1 G2	94909	255
68420	uvex 1 G2	94900	253
68427	uvex 1 G2	94907	253
68428	uvex 1 G2	94908	253
68429	uvex 1 G2	94909	253
68430	uvex 1 G2	94900	253
68437	uvex 1 G2	94907	253
68438	uvex 1 G2	94908	253
68439	uvex 1 G2	94909	253
68440	uvex 1 G2	94900	253

Art. no.	Collection	Replacement insole	Page
68447	uvex 1 G2	94907	253
68448	uvex 1 G2	94908	253
68449	uvex 1 G2	94909	253
68450	uvex 1 G2	94900	253
68457	uvex 1 G2	94907	253
68458	uvex 1 G2	94908	253
68459	uvex 1 G2	94909	253
68460	uvex 1 G2	94900	258
68467	uvex 1 G2	94907	258
68468	uvex 1 G2	94908	258
68469	uvex 1 G2	94909	258
68470	uvex 1 G2	94900	258
68477	uvex 1 G2	94907	258
68478	uvex 1 G2	94908	258
68479	uvex 1 G2	94909	258
68480	uvex 1 G2	94900	258
68487	uvex 1 G2	94907	258
68488	uvex 1 G2	94908	258
68489	uvex 1 G2	94909	258
68490	uvex 1 G2	94900	259
68497	uvex 1 G2	94907	259
68498	uvex 1 G2	94908	259
68499	uvex 1 G2	94909	259
68500	uvex 1 G2	94900	259
68507	uvex 1 G2	94907	259
68508	uvex 1 G2	94908	259
68509	uvex 1 G2	94909	259
68721	uvex 3	94907	307
68722	uvex 3	94908	307
68723	uvex 3	94909	307
68731	uvex 3	94907	307
68732	uvex 3	94908	307
68733	uvex 3	94909	307
68741	uvex 3	94907	306
68742	uvex 3	94908	306
68743	uvex 3	94909	306
69061	uvex 2 trend	95187	300
69062	uvex 2 trend	95188	300
69063	uvex 2 trend	95189	300
69077	uvex 2 trend	95187	301
69078	uvex 2 trend	95188	301
69079	uvex 2 trend	95189	301
69081	uvex 2 trend	95187	301
69082	uvex 2 trend	95188	301
69083	uvex 2 trend	95189	301
69097	uvex 2 trend	95187	302
69098	uvex 2 trend	95188	302
69099	uvex 2 trend	95189	302
69341	uvex 2 trend	95187	303
69342	uvex 2 trend	95188	303
69343	uvex 2 trend	95189	303
69347	uvex 2 trend	95187	303
69348	uvex 2 trend	95188	303
69349	uvex 2 trend	95189	303
69351	uvex 2 trend	95187	303
69352	uvex 2 trend	95188	303
69353	uvex 2 trend	95189	303
69357	uvex 2 trend	95187	303
69358	uvex 2 trend	95188	303
69359	uvex 2 trend	95189	303
69361	uvex 2 trend	95187	300
69362	uvex 2 trend	95188	300
69363	uvex 2 trend	95189	300
69367	uvex 2 trend	95187	300
69368	uvex 2 trend	95188	300
69369	uvex 2 trend	95189	300
69371	uvex 2 trend	95187	301
69372	uvex 2 trend	95188	301
69373	uvex 2 trend	95189	301
69377	uvex 2 trend	95187	301
69378	uvex 2 trend	95188	301
69379	uvex 2 trend	95189	301
69381	uvex 2 trend	95187	301
69382	uvex 2 trend	95188	301
69383	uvex 2 trend	95189	301
69397	uvex 2 trend	95187	302
69398	uvex 2 trend	95188	302
69399	uvex 2 trend	95189	302
69461	uvex 2 trend	95187	300
69462	uvex 2 trend	95188	300
69463	uvex 2 trend	95189	300
69477	uvex 2 trend	95187	301
69478	uvex 2 trend	95188	301
69479	uvex 2 trend	95189	301
69497	uvex 2 trend	95187	302
69498	uvex 2 trend	95188	302
69499	uvex 2 trend	95189	302
69788	uvex motion style	95956	278
69798	uvex motion style	95956	278
69898	uvex motion style	95956	278
69988	uvex motion style	95956	278
84002	uvex quatro pro	95954	309

You can find more information on uvex medicare on pages 385 to 393

Art. no.	Collection	Replacement insole	Page
84012	uvex quatro pro	95954	309
84022	uvex quatro pro	95954	309
84032	uvex quatro pro	95954	309
84039	uvex quatro pro	95954	309
84062	uvex quatro STX		308
84072	uvex quatro STX		308
84261	uvex 1 business	95157	276
84262	uvex 1 business	95158	276
84263	uvex 1 business	95159	276
84271	uvex 1 business	95157	276
84272	uvex 1 business	95158	276
84273	uvex 1 business	95159	276
84281	uvex 1 business	95157	276
84282	uvex 1 business	95158	276
84283	uvex 1 business	95159	276
84301	uvex 1 business	95157	277
84302	uvex 1 business	95158	277
84303	uvex 1 business	95159	277
84481	uvex 1 business	95157	277
84482	uvex 1 business	95158	277
84483	uvex 1 business	95159	277
84491	uvex 1 business	95157	277
84492	uvex 1 business	95158	277
84493	uvex 1 business	95159	277
84697	uvex 1 business	95157	276
84698	uvex 1 business	95158	276
84699	uvex 1 business	95159	276
85117	uvex 1 x-tended support	95347	271
85118	uvex 1 x-tended support	95348	271
85119	uvex 1 x-tended support	95349	271
85127	uvex 1 x-tended support	95347	271
85128	uvex 1 x-tended support	95348	271
85129	uvex 1 x-tended support	95349	271
85141	uvex 1 x-tended support	95347	272
85142	uvex 1 x-tended support	95348	272
85143	uvex 1 x-tended support	95349	272
85161	uvex 1 x-tended support	95347	273
85162	uvex 1 x-tended support	95348	273
85163	uvex 1 x-tended support	95349	273
85171	uvex 1 x-tended support	95347	273
85172	uvex 1 x-tended support	95348	273
85173	uvex 1 x-tended support	95349	273
85191	uvex 1 x-tended support	95347	272
85192	uvex 1 x-tended support	95348	272
85193	uvex 1 x-tended support	95349	272
85361	uvex 1 x-tended support	95347	272
85362	uvex 1 x-tended support	95348	272
85363	uvex 1 x-tended support	95349	272
85420	uvex 1	95340	267
85427	uvex 1	95347	267
85428	uvex 1	95348	267
85429	uvex 1	95349	267
85430	uvex 1	95340	267
85437	uvex 1	95347	267
85438	uvex 1	95348	267
85439	uvex 1	95349	267
85440	uvex 1	95340	268
85447	uvex 1	95347	268
85448	uvex 1	95348	268
85449	uvex 1	95349	268
85450	uvex 1	95340	268
85457	uvex 1	95347	268
85458	uvex 1	95348	268
85459	uvex 1	95349	268
85467	uvex 1	95347	270
85468	uvex 1	95348	270
85469	uvex 1	95349	270
85477	uvex 1	95347	270
85478	uvex 1	95348	270
85479	uvex 1	95349	270
85607	uvex 1 ladies	95347	269
85608	uvex 1 ladies	95348	269
85617	uvex 1 ladies	95347	269
85618	uvex 1 ladies	95348	269
85627	uvex 1 ladies	95347	269
85628	uvex 1 ladies	95348	269
85647	uvex 1 ladies	95347	269
85648	uvex 1 ladies	95348	269
94756	Accessories	-	319
94766	Accessories	-	319
94900	Inlay soles	-	316
94907	Inlay soles	-	316
94908	Inlay soles	-	316
94909	Inlay soles	-	316
95041	uvex 2 xenova®	95347	293
95042	uvex 2 xenova®	95348	293
95043	uvex 2 xenova®	95349	293
95047	uvex 2 xenova®	95347	293
95048	uvex 2 xenova®	95348	293
95049	uvex 2 xenova®	95349	293
95057	uvex 2 xenova®	95347	294
95058	uvex 2 xenova®	95348	294

Art. no.	Collection	Replacement insole	Page
95059	uvex 2 xenova®	95349	294
95061	uvex 2 xenova®	95347	296
95062	uvex 2 xenova®	95348	296
95063	uvex 2 xenova®	95349	296
95067	uvex 2 xenova®	95347	296
95068	uvex 2 xenova®	95348	296
95069	uvex 2 xenova®	95349	296
95071	uvex 2 xenova®	95347	297
95072	uvex 2 xenova®	95348	297
95073	uvex 2 xenova®	95349	297
95077	uvex 2 xenova®	95347	297
95078	uvex 2 xenova®	95348	297
95079	uvex 2 xenova®	95349	297
95087	uvex 2 xenova®	95347	295
95088	uvex 2 xenova®	95348	295
95089	uvex 2 xenova®	95349	295
95157	Inlay soles	-	316
95158	Inlay soles	-	316
95159	Inlay soles	-	316
95177	Inlay soles	-	316
95178	Inlay soles	-	316
95179	Inlay soles	-	316
95187	Inlay soles	-	316
95188	Inlay soles	-	316
95189	Inlay soles	-	316
95281	Inlay soles	-	317
95282	Inlay soles	-	317
95283	Inlay soles	-	317
95284	Inlay soles	-	317
95285	Inlay soles	-	317
95286	Inlay soles	-	317
95287	Inlay soles	-	317
95288	Inlay soles	-	317
95289	Inlay soles	-	317
95340	Inlay soles	-	316
95347	Inlay soles	-	316
95348	Inlay soles	-	316
95349	Inlay soles	-	316
95531	uvex 2 xenova®	95347	293
95532	uvex 2 xenova®	95348	293
95533	uvex 2 xenova®	95349	293
95537	uvex 2 xenova®	95347	293
95538	uvex 2 xenova®	95348	293
95539	uvex 2 xenova®	95349	293
95547	uvex 2 xenova®	95347	294
95548	uvex 2 xenova®	95348	294
95549	uvex 2 xenova®	95349	294
95551	uvex 2 xenova®	95347	296
95552	uvex 2 xenova®	95348	296
95553	uvex 2 xenova®	95349	296
95557	uvex 2 xenova®	95347	296
95558	uvex 2 xenova®	95348	296
95559	uvex 2 xenova®	95349	296
95561	uvex 2 xenova®	95347	297
95562	uvex 2 xenova®	95348	297
95563	uvex 2 xenova®	95349	297
95567	uvex 2 xenova®	95347	297
95568	uvex 2 xenova®	95348	297
95569	uvex 2 xenova®	95349	297
95577	uvex 2 xenova®	95347	295
95578	uvex 2 xenova®	95348	295
95579	uvex 2 xenova®	95349	295
95581	uvex 2 xenova®	95347	294
95582	uvex 2 xenova®	95348	294
95583	uvex 2 xenova®	95349	294
95591	uvex 2 xenova®	95347	293
95592	uvex 2 xenova®	95348	293
95593	uvex 2 xenova®	95349	293
95597	uvex 2 xenova®	95347	293
95598	uvex 2 xenova®	95348	293
95599	uvex 2 xenova®	95349	293
95607	uvex 2 xenova®	95347	294
95608	uvex 2 xenova®	95348	294
95609	uvex 2 xenova®	95349	294
95641	uvex 2 xenova®	95347	296
95642	uvex 2 xenova®	95348	296
95643	uvex 2 xenova®	95349	296
95647	uvex 2 xenova®	95347	296
95648	uvex 2 xenova®	95348	296
95649	uvex 2 xenova®	95349	296
95661	uvex 2 xenova®	95347	297
95662	uvex 2 xenova®	95348	297
95663	uvex 2 xenova®	95349	297
95667	uvex 2 xenova®	95347	297
95668	uvex 2 xenova®	95348	297
95669	uvex 2 xenova®	95349	297
95687	uvex 2 xenova®	95347	295
95688	uvex 2 xenova®	95348	295
95689	uvex 2 xenova®	95349	295
95691	uvex 2 xenova®	95347	297
95692	uvex 2 xenova®	95348	297
95693	uvex 2 xenova®	95349	297

Art. no.	Collection	Replacement insole	Page
95790	Inlay soles	-	316
95797	Inlay soles	-	316
95798	Inlay soles	-	316
95799	Inlay soles	-	316
95954	Inlay soles	-	317
95956	Inlay soles	-	317
9698100	uvex nano shoe add on	-	318
9698300	uvex nano shoe add in	-	318
98754	Accessories	-	319



Art.no.	Collection	Page
67323	MACCROSSROAD 3.0 LOW	312
67313	MACCROSSROAD 3.0 HIGH	312
67353	MACCROSSROAD 3.0 HIGH META	313
67363	MACCROSSROAD 3.0 HIGH	313
67533	MACSTOPAC 300 LOW	314
67153	MACSTOPAC 300 HIGH	314
62993	MACSOLE 1.0 NTX	315
62963	MACSOLE 1.0 WLD LOW	315





This practical seminar will help you to analyse the dangers that employees face, determine what equipment is required to keep them safe and select the most appropriate protective footwear

- basic information on the areas of application of PPE footwear
- information on standards, the differences between primary and secondary requirements and their applications
- description of the labels found on protective footwear and the meaning of the various codes
- identification and assessment of dangers, developing a risk analysis strategy and understanding which safety equipment is necessary
- information on materials, production processes and areas of application including:
 - Upper materials and lining
 - Soles
 - Protective toecaps
 - Penetration-resistant inlay
- choosing the correct protective footwear for each application

Target group

Those responsible for the work-related health and safety of employees, e.g. health and safety officers, specialist purchasers and representatives of employee groups.



For more information or to book a place, please visit uvex-academy.de, call +49 (0)911 9736 1710 or email academy@uvex.de