

uvex



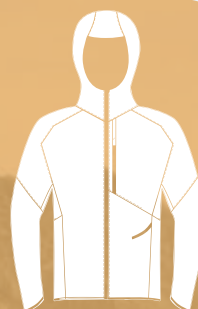
Workwear Protective clothing

protecting people

uvex workwear

Sustainability

For over 90 years, we have been producing and distributing high-quality products to protect people in sports, leisure and at work. Any company wanting to protect people must accept the responsibility that comes with it. It is exactly this mission that instils our commitment to work sustainably and with social responsibility.



Durable products

In contrast to the current trend for “fast fashion”, our goal is to develop long-lasting products while maximising resource efficiency, so it is of the utmost importance that we use high-quality materials and ingredients. To ensure we do so, we subject our workwear products to our uvex quality standards and regularly test them at our in-house textile test lab to check that they can withstand mechanical stress such as abrasion, cutting and washing. We also send our products to external washing laboratories to confirm that they can be washed in an industrial laundry facility – such products are labelled with “SL” (Suitable for Laundry) in the catalogue. We firmly believe that this effort helps to conserve resources and significantly extends the product life cycle.



OEKO-TEX®
CONFIDENCE IN TEXTILES
STANDARD 100
520-0516 HOHENSTEIN HTTI
Tested for harmful substances.
www.oeko-tex.com/standard100

Detailed information on the award criteria applied by the certification bodies OEKO-TEX®, proDERM and Top100 can be found at: uvex-safety.com/certificates



Protecting people

OEKO-TEX® STANDARD 100 – uvex hazardous substances list

To succeed in our mission of “protecting people”, we are fully committed to ensuring that our products contain no substances that are harmful to human health. OEKO-TEX® STANDARD 100 certification guarantees that our products have been tested for harmful substances. From the outer shoe material and accessories to even the smallest press stud or label, we ensure from the development stage that every single element of the product can be certified in accordance with OEKO-TEX® STANDARD 100 so that the entire product can also be certified.

In addition to OEKO-TEX®, our materials also meet the requirements of our uvex hazardous substances list, which exceeds legal regulations. We use this list to test our products for hazardous pollutants such as PFCs (perfluorinated compounds), pesticides, heavy metals or phenols, because both protecting people and reducing environmental pollution are core concerns for us.



Manufacturing expertise

In the textile industry, the current norm is to import everything: contrary to this, we continue to trust in products that are made in Europe. As a manufacturer, our responsibilities include design, development, material procurement and production. This is the only way that we at uvex can ensure that everything we produce consistently meets our high quality requirements. We are also a member of the Business Social Compliance Initiative (BSCI), meaning we have pledged to continuously improve living and working conditions on-site for those working on every stage of our supply chain – from production right through to the final product. By sourcing our products in Europe, we can also achieve shorter transport routes, lower CO₂ emissions and faster availability.



Sustainable materials

Tencel™

Another focus for us is the materials we choose to make our products from. We therefore use Tencel™, a natural fibre made from beech and eucalyptus wood, when we produce our T-shirts. The wood we use comes from sustainable forests that are cultivated in a way that preserves resources – i.e. no additional irrigation and no pesticides.

Recycled polyester

So that we can conserve valuable resources, we use recycled polyester made from empty plastic bottles. The bottles are melted in and spun into new threads, which are used for the production of our materials.

Using recycled polyester reduces our dependence on crude oil and reduces waste.

amfori 
Trade with purpose

* Member of amfori, the leading global business association for open and sustainable trade. We participate in amfori BSCI. For more information visit www.amfori.org*



Men's rain jacket

Art. no. 88354 ● saffron S to 4XL

material: 100% polyester, approx. 110 g/m²



Description: • light and functional • small pack size • waterproof zip and hood for rainy days in the city • "high-rise" arm design • breathability MVP 8,000 g/m²/24 h • water column 10,000 mm

Men's functional trousers

Art. no. 88350 ● black 42 to 64, 90 to 110

material: 92% polyamide, 8% elastane, approx. 178 g/m²



Description: • stylish and ultra-light • abrasion-resistant on the outside • soft brushed on the inside • chino shape with intelligent 3D pattern design • pockets with zip

Men's knitted pullover

Art. no. 88356 ● stone grey S to 4XL

material: 100% cotton, approx. 280 g/m²



Description: • with integrated breast pocket • soft and comfortable material • clean look



Beanie

Art. no. 8835800 ● saffron, ● dark blue one size

material: 60% cotton, 40% acrylic, approx. 135 g/m²



Description: • reversible hat in saffron and dark blue • soft and comfortable • for cold days in the city

Ladies' polo shirt

Art. no. 88362 ● black XS to 3XL
Art. no. 88363 ● berry

material: 70% cotton, 30% polyester pique, approx. 200 g/m²



Description: • material mix and casual fit • clean look and tailored fit • OEKO-TEX® Standard 100



Art.no. 88360, 88361, 88362, 88363



Ladies' functional trousers

Art. no. 88351 ● black 34 to 50

material: 92% polyamide, 8% elastane, approx. 178 g/m²



Description: • stylish and ultra-light urban trousers • abrasion-resistant on the outside • soft brushed on the inside • chino shape with intelligent 3D pattern design • pockets with zip

Ladies' sweater

Art. no. 88357 ● berry XS to 3XL

material: 73% cotton, 27% polyester, approx. 280 g/m²



Description: • fitted with clean look • "high-rise" arm design • sporty fit and scoop neck

Men's polo shirt

Art. no. 88360 ● black S to 4XL

Art. no. 88361 ○ white

material: 70% cotton, 30% polyester pique, approx. 200 g/m²



Description: • casual polo shirt in a comfortable material mix • clean loose fit • OEKO-TEX® Standard 100



Ladies' parka

Art. no. 88353 ● dark blue XS to 3XL

material: outer fabric: 100% nylon

Lining and padding: 100% polyester, approx. 170 g/m²



Description: • warming, wind-resistant and water-resistant • clean urban look • padding for optimal heat insulation • preformed tailored fit for maximum freedom of movement • pockets with zip • breathability MVP 10,000 g/m²/24 h • water column 10,000 mm

Men's parka

Art. no. 88352 ● dark blue S to 4XL

Art. no. 88323 ● olive

material: outer fabric: 100% nylon

Lining and padding: 100% polyester, approx. 170 g/m²



Description: • warming, wind-resistant and water-resistant • clean urban look • padding for optimal heat insulation • preformed cut for maximum freedom of movement • pockets with zip • breathability MVP 10,000 g/m²/24 h • water column 10,000 mm

Ladies' rain jacket

Art. no. 88355 ● saffron XS to 3XL

material: 100% polyester, approx. 110 g/m²



Description: • light and functional with small pack size • waterproof zip and hood for rainy days in the city • "high-rise" arm design • tailored • breathability MVP 8,000 g/m²/24 h • water column 10,000 mm



uvex

uvex suXXeed

Some call it fit,
functionality, style.
We call it success

The uvex suXXeed collection gets everything spot on: well thought-out functionality, sporty design, exciting colour contrasts, unusual material combinations and a cut that fits like a glove. The result looks equally good on men and women – and it can be worn in industrial and metal processing settings as well as for leisure. uvex suXXeed equipment keeps up with the demands of every application and every movement. The men's trousers are now available in either slim or regular fit. Our goal is to achieve an absolutely perfect fit, and it's an indispensable part of our recipe for success.

The best fit, no compromises – at work and at play.



Video



For more information, visit
uvex-safety.com

A man and a woman are shown in a locker room setting, wearing black seamless underwear. The man is sitting on a bench, and the woman is standing next to him. They are both smiling and looking at each other. The background shows lockers and a shelf with sports equipment like helmets and shoes.

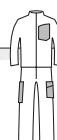
uvex

uvex suXXeed seamless underwear

Excellent breathability and comfort

Dryarn® provides the perfect support for both work and leisure activities. This high-performance fibre is quick-drying, breathable and helps regulate your temperature (cools you down in summer and keeps you warm in winter). It is blended with Merino wool to provide extra support.

For more information, visit
uvex-safety.com





uvex

uvex perfeXXion

First colourfully mixed,
then washed clean.

Horticulture and landscaping, wood processing or facilities management: all choose uvex perfeXXion.

And uvex perfeXXion leaves the choice open to all. For this robust collection not only offers X different colour versions, but also X different equipment details: Depending on requirements, the different tops and trousers can be freely combined and colourfully mixed. In any situation, the material is extremely hard-wearing. And – most importantly – all items are machine-washable.

**For more information, visit
uvex-safety.com**



uvex

uvex perfect

Create your own combination,
just make sure your whole team
is wearing the same outfit

The uvex perfect range is extensive. And because all items are designed to coordinate perfectly with each other, everything can be combined perfectly. As varied as the colours and materials might be, so too are possibilities of piecing the right equipment together.

Entire teams can dress appropriately for their respective activities and visually distinguish themselves from each other. For the certified protective clothing that makes up the uvex perfect collection is not only good for your safety – but also for team spirit.



For more information, visit
uvex-safety.com





uvex

uvex protection perfect multifunction

Protects, eases strain,
sits comfortably and is able to
withstand a lot: Protective clothing,
as varied as a working day

Heat, arc flashes, chemicals: If you work in industry, you're right in the middle of it all and are often exposed to a range of hazards. But whatever the day might bring: Our uvex protection perfect multi-function range offers optimal all-round protection and makes work easier thanks to maximum wearer comfort. Stretch inserts in the back and knee area help with ease of movement, while a high proportion of natural fibres and a robust weave allow the hard-wearing material to breathe.

**For more information, visit
uvex-safety.com**



uvex

uvex suXXeed multifunction

Protective clothing as varied
as its applications

In a company with a number of different areas of operation, it can often be difficult to choose the right kind of protective clothing. Our new uvex suXXeed multifunction collection provides protection against a wide range of workplace hazards. Whether it's protection against heat and flames, short circuit electric arcs or chemicals: the new uvex suXXeed multifunction range offers optimum protection and facilitates work with maximum wearer comfort.

For more information, visit
uvex-safety.com





uvex

uvex suXXeed ESD

Occupational safety and ergonomics in one

The new uvex suXXeed ESD combines safety and ergonomics in one thanks to a high-rise arm design and a perfect 3D fit. Our newly developed ESD seamless shirt has no irritating seams for supreme comfort. The entire collection contains conductive fibres and is approved in accordance with IEC 61340.

**For more information, visit
uvex-safety.com**

**uvex**

uvex cut

Protects when work gets sharp

The uvex cut collection protects against injuries that could be caused by blades, glass plates and sharp-edged workpieces. These hard-wearing tops and trousers are also extremely comfortable thanks to the innovative double-face principle and bamboo TwinFlex® inserts.

While abrasion-resistant polyamide and cut-resistant glass fibres on the outside provide maximum protection, the soft bamboo yarn on the inside ensures optimal climate control. And this remains the case even after several industrial cleaning processes.

For more information, visit
uvex-safety.com



uvex

uvex cut quatreflex

uvex cut quatreflex polo shirt

Art. no. 17266

● black,
● anthracite (sleeves)

S to 3XL

material: polo shirt 55% cotton, 45% polyester, ¾-length sleeves made from cut-protection material in accordance with EN 388: 2003, cut protection class 5, approx. 185 g/m²



Description: • slim fit • made from breathable functional fibres with cut-protection sleeves of the highest cut protection class • panel with three buttons • functional, highly elastic strip in the elbow area • integrated cuffs on sleeves without seams • protection and wearer comfort guaranteed even after repeated washing • cut protection made from Bamboo TwinFlex® material: extremely durable on the outside, pleasantly cool on the inside



uvex cut quatreflex polo shirt

Art. no. 17267

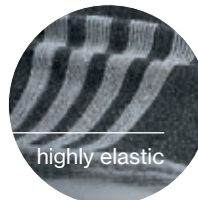
● black, ● anthracite (sleeves)

S to 3XL

material: polo shirt 54% modacrylic, 44% cotton, 2% antistatic fibres, ¾-length sleeves made from cut-protection material in accordance with EN 388: 2003, cut protection class 5, approx. 195 g/m²



Description: • slim fit • sleeves made from cut-resistant material of the highest cut protection class combined with heat-resistant body material made from breathable functional fibres • panel with three buttons • functional, highly elastic strip in the elbow area • integrated cuffs on sleeves without seams • protection and wearer comfort guaranteed even after repeated washing • cut protection made from Bamboo TwinFlex® material: extremely durable on the outside, pleasantly cool on the inside



highly elastic



Material mix

uvex cut quatreflex T-shirt

Art. no. 17268

● black, ● anthracite (sleeve)

S to 3XL

Art. no. 17269

● dark grey mix, ● anthracite (sleeve)

material: shirt: 50% cotton, 50% polyester, ¾-length sleeves made from cut-protection material in accordance with EN 388: 2003, cut protection class 5, approx. 160 g/m²



Description: • slim fit • made from single-jersey fabric with cut-protection sleeves of the highest cut protection class • functional, highly elastic strip in the elbow area • integrated cuffs on sleeves without seams • protection and wearer comfort guaranteed even after repeated washing • cut protection made from Bamboo TwinFlex® material: extremely durable on the outside, pleasantly cool on the inside



uvex cut quatreflex trousers

Art. no. 17270

● black, ● anthracite
(front of trouser legs)

42 to 64,
90 to 110

material: trousers: 65% polyester, 35% cotton, front of trouser legs made from cut-protection material in accordance with EN 388: 2003, cut protection class 5, approx. 245 g/m²



Description: • sporty cut • functional, highly elastic strip in the knee area • integrated inserts to allow crosswise stretch along the side seam • waistband elasticated at the back • two back pockets • protection and wearer comfort guaranteed even after repeated washing • cut protection made from Bamboo TwinFlex® material: extremely durable on the outside, pleasantly cool on the inside

Cut protection for hazardous working conditions

To meet the various and demanding hazards in metalworking or glass processing, our product range includes garments with heat-resistant shirt material.

With a weight per unit area of 195 g/m², the high modacrylic content of the heat-resistant shirt material offers limited protection against contact heat of up to 250°C, especially when handling hot metal. The cotton content ensures that the shirt remains comfortable to wear. Professional clothing with partial cut protection.

nanoflex

fits comfortably on the upper and lower arm – without restricting freedom of movement

quatroflex

super elastic, lengthwise and crosswise quatro structure protects the elbow joint and relieves strain

doubleflex

comfortable to wear, retains its shape and allows a long-sleeved top to be worn underneath the shirt.

Bamboo TwinFlex® technology.

Extremely robust. Extremely comfortable.

Outside

extremely durable

Whether against blades, sheets of glass or sharp-edged workpieces: uvex cut protects while being comfortable to wear. This is guaranteed by the patented Bamboo TWIN-FLEX® technology with innovative double-face principle. Cut-resistant glass fibres and abrasion-resistant polyamide on the outside of the fabric ensure maximum protection (cut protection class 5) – delivering reliable protection even under extreme conditions.

Inside

extremely comfortable

On the inside, soft bamboo yarn ensures a pleasantly cool feeling on the skin and optimal temperature regulation – so your employee is fully efficient, even under additional stresses such as high temperatures. The durable Dyneema® fibre provides reliable protection against the material tearing. Even after repeated washing, uvex cut offers protection and wearer comfort of the highest level.



uvex

uvex cut doubleflex



Panel of
three buttons



uvex cut doubleflex polo shirt

Art. no. 17262 ● light grey, ● anthracite (sleeves + collar) S to 3XL
Art. no. 17263 ● black, ● anthracite (sleeves)
Art. no. 17264 ● black, ● anthracite (sleeves)

material art. no. 17262 and 17263:

polo shirt: 55% cotton, 45% polyester, ¾-length sleeves made from cut-protection material in accordance with EN 388: 2003, cut protection class 5, approx. 195 g/m²

material art. no. 17264:

54% modacrylic, 44% cotton, 2% antistatic fibres, approx. 195 g/m²

40°C | 40°C | 40°C | 40°C | 40°C | 40°C (for art. no. 17262 and 17263 only)

Description: • slim fit • made from breathable functional fibres with cut-protection sleeves of the highest cut protection class • panel with three buttons • integrated cuffs on sleeves without seams • protection and wearer comfort guaranteed even after repeated washing • cut protection made from Bamboo TwinFlex® material: extremely durable on the outside, pleasantly cool on the inside



uvex cut doubleflex T-shirt

Art. no. 17265 ● dark grey mix, S to 3XL
● anthracite (sleeves)

material: shirt: 50% cotton, 50% polyester, ¾-length sleeves made from cut-protection material in accordance with EN 388: 2003, cut protection class 5, approx. 160 g/m²

40°C | 40°C | 40°C | 40°C | 40°C | 40°C

Description: • slim fit • made from single-jersey fabric with cut-protection sleeves of the highest cut protection class • integrated cuffs on sleeves without seams • protection and wearer comfort guaranteed even after repeated washing • cut protection made from Bamboo TwinFlex® material: extremely durable on the outside, pleasantly cool on the inside



uvex cut nanoflex polo shirt

Art. no. 89881 ● light grey, ● anthracite (sleeves/collar) S to 3XL
 Art. no. 89882 ● royal blue, ● anthracite (sleeves)
 Art. no. 89883 ● orange, ● anthracite (sleeves)

material: polo shirt 55% cotton, 45% polyester, approx. 185 g/m² (art. no. 89881) 100% cotton, approx. 230 g/m² (art. no. 89882) 54% modacrylic, 44% cotton, 2% antistatic fibres, approx. 270 g/m² (art. no. 89883) ¾-length sleeves made from cut-protection material in accordance with EN 388: 2003, cut protection class 5

(for art. no. 89881 and 89882 only)

Description: • slim fit • made from breathable functional fibres with cut-protection sleeves of the highest cut protection class • panel with three buttons in a contrasting colour • lower arm with highly elastic inserts • reflective detailing on the shoulder (art. no. 89883) • protection and wearer comfort guaranteed even after repeated washing • cut protection made from Bamboo TwinFlex® material: extremely durable on the outside, pleasantly cool on the inside



uvex cut nanoflex T-shirt

Art. no. 17261 ● dark grey melange S to 3XL
 ● anthracite (sleeves)

material: shirt: 50% cotton, 50% polyester, ¾-length sleeves made from cut-protection material in accordance with EN 388: 2003, cut protection class 5 approx. 160 g/m²

Description: • slim fit • made from single-jersey fabric with cut-protection sleeves of the highest cut protection class • lower arm with highly elastic inserts • protection and wearer comfort guaranteed even after repeated washing • cut protection made from Bamboo TwinFlex® material: extremely durable on the outside, pleasantly cool on the inside





uvex

uvex suXXeed construction

Occupational safety and ergonomics in one

In order to overcome the various challenges of the construction industry, our uvex suXXeed construction line is now available in a new ergonomic 3D design. The collection features reliable UV protection and is partly made of sustainable materials. The products are also fully certified in accordance with EN 20471.

For more information, visit
uvex-safety.com

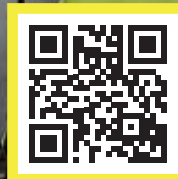
uvex protection active flash

Conspicuous at night,
and a sporty eye-catcher by day

Even in rain, fog and darkness, you can still work outside. It's essential that everyone can be seen – despite the poor visibility. The high-visibility clothing from the uvex protection flash collection uses bright reflective strips. And some models even light up independently. This is thanks to the innovative light guide system, which we have developed together with OSRAM®. And of course the cargo trousers and softshell jackets with their sporty fit can also be seen in daylight – after all, they were designed by uvex...



Video:



For more information, visit
uvex-safety.com



uvex



Battery pack

Art. no. 8997100

Description: • portable external battery for art. no. 89910 • dimensions: 113 x 58 x 12 mm, approx. 100 g



Battery pack for models with switch

Art. no. 1733200

• white

Description: • portable external battery for art. no. 17322, 17323, 17324 • dimensions: 93 x 58 x 12 mm, approx. 83 g



EN ISO 20471



Vest with switch

Art. no. 17322

• high-vis yellow, • high-vis orange

M to 3XL

material: 65% polyester, 35% cotton, approx. 245 g/m²



Description: • active protection thanks to horizontal and vertical light guide system • velcro fastening to quickly fasten the vest • version with switch for different lighting modes available

uvex protection active flash

Light guides

uvex



EN ISO 20471



Softshell jacket

Art. no. 89910

● high-vis yellow ● grey

S to 6XL

material: 100% polyester, with three-layer membrane, approx. 240 g/m²



Description: • windproof and waterproof high-visibility softshell jacket • a Napoleon pocket on the left and two large side pockets with zip • active protection thanks to the integrated light guide system • 10,000 mm water column rating • lightweight, robust and breathable material

EN ISO 20471



Vest with switch

Art. no. 17323 (with switch)

● high-vis yellow

M to 3XL

Art. no. 17324 (with switch)

● high-vis orange

material: 100% polyester, mesh



Description: • active protection thanks to vertical light guide system • velcro fastening to quickly fasten the vest • version with switch for different light modes

