



Safety Helmets

Standards at a glance

EN 397 · EN 50365

EN 397 – Industrial safety helmets






Protection against falling objects and the consequences thereof, such as brain damage and skull fracture

Binding requirements: all helmets certified according to EN 397 must meet these requirements.

- shock absorption, vertical
- penetration resistance (against sharp and pointed objects)
- flame resistance
- chin strap attachment: chin strap releases at minimum 150 N and maximum 250 N

Optional requirements: a helmet certified in accordance with EN 397 may meet these requirements; they are, however, not mandatory requirements.

- very low temperatures (-20°C or -30°C)
- very high temperatures (+150°C)
- electrical insulation (440 V)
- molten metal (MM)
- lateral deformation

| | | | | | |
|--|---|---|---|--|---|
| very low temperatures (-20°C or -30°C) |  uvex airwing |  uvex super boss |  uvex pheos |  uvex pheos alpine | |
| very high temperatures (+150°C) | | | | |  uvex thermo boss |
| electrical insulation (440 V) | |  uvex airwing E | | |  uvex thermo boss |
| molten metal (MM) | | |  uvex pheos | | |
| lateral deformation | | | | | |

EN 50365 – Insulating helmets for use on low voltage installations

Protection against electric shocks and prevention of dangerous electric current passing through the head

Requirements:

- All helmets must also meet the requirements in accordance with EN 397.
- Protection against alternating voltage of up to 1000 V (AC) or direct voltage up to 1500 V (DC)
- Insulating helmets must not contain any conductive parts.
- Air vents (if available) must not allow any accidental contact with live parts.



uvex pheos E

Overview of standards

EN 12492

EN 12492 – Helmets for mountaineers

Protection against hazards that may occur during activities undertaken by mountaineers

Requirements:

- Shock absorption, vertical, frontal, lateral, dorsal
- Penetration resistance
- Carrier element (chin strap releases at min. 500 N)
- Strength of carrier element: Chin strap may exhibit maximum elongation of 25 mm
- Carrier element effectiveness: Helmet must not slide from the head



uvex pheos alpine



uvex pheos IES

IES ensures eyewear is always where it should be.

When combining helmets and safety eyewear, the position of the eyewear is related to that of the helmet shell. If the helmet shifts as a result of sudden movement, this inevitably means the visor moves, which can be dangerous as it changes light conditions.

IES stands for Integrated Eyewear System and the name says it all: With this system, uvex pheos safety spectacles can be pushed up inside the uvex pheos helmet or pulled down to sit on the nose. The sliding element can be swiveled, so that the helmet can move, while the eyewear keeps its position.



Integrated Eyewear System

The nose piece of uvex pheos safety spectacles is clicked into the mount and locked into the sliding element in the interior of the helmet.



Functionality uvex pheos IES

The spectacles have a set storage spot in the helmet. If safety eyewear is required, it can be pulled down quickly and easily.



uvex pheos IES

- safety helmet with slots for uvex visors, earmuffs, lamps and Integrated Eyewear System (IES)
- side Euroslot adapters (30 mm) for attaching earmuffs
- meets standard EN 397 and additional requirements for very low temperatures (-30 °C) and molten metal (MM) splash
- three variable air vents for maximum ventilation
- suspension harness with wheel ratchet for variable width adjustment – also has the option to mount uvex pheos, uvex pheos or uvex i-works safety spectacles
- fitted with the 9760007 sweatband
- six-point textile band attachment ensures optimal fit and comfort

| uvex pheos IES | | | | | |
|-----------------------|--|-------------|-------------|-------------|-------------|
| Art. no. | 9772040 | 9772140 | 9772240 | 9772340 | 9772540 |
| Colour | white | yellow | orange | red | blue |
| Version | with long brim and IES (Integrated Eyewear System) | | | | |
| Standard | EN 397 | EN 397 | EN 397 | EN 397 | EN 397 |
| | -30 °C, MM | -30 °C, MM | -30 °C, MM | -30 °C, MM | -30 °C, MM |
| Sizes | 55 to 61 cm | 55 to 61 cm | 55 to 61 cm | 55 to 61 cm | 55 to 61 cm |
| Retail unit | 1 | 1 | 1 | 1 | 1 |
| Quantity in outer box | 25 | 25 | 25 | 25 | 25 |

Safety Helmets

uvex pheos ABS B-S-WR · uvex pheos B · uvex pheos B-WR



9772071

Conformity assessment not yet completed



9772171

Conformity assessment not yet completed



uvex pheos ABS B-S-WR

- ABS safety helmet with slots for uvex visors, earmuffs and helmet lamps
- side Euroslot adapters (30 mm) for attaching earmuffs
- meets EN 397 standards and additional requirements for very low temperatures (-30°C)
- high lateral rigidity
- three variable air vents for maximum ventilation
- conventional suspension harness for comfortable adjustable fit (uvex pheos B)
- suspension harness fitted with wheel ratchet system (9760012) and sweatband (9760009)
- six-point textile band attachment ensures optimum fit and comfort

| uvex pheos ABS B-S-WR | | |
|-----------------------|-----------------|-----------------|
| Art. no. | 9772071 | 9772171 |
| Colour | white | yellow |
| Version | with short brim | with short brim |
| Standard | EN 397 | EN 397 |
| | -30 °C, MM | -30 °C, MM |
| Sizes | 52 to 61 cm | 52 to 61 cm |
| Retail unit | 1 | 1 |
| Quantity in outer box | 18 | 18 |



9772220



9772320



9772520



9772430



9772930

uvex pheos B · uvex pheos B-WR

- safety helmet with slots for uvex visors, earmuffs and lamps
- side Euroslot adapters (30 mm) for attaching earmuffs
- meets standard EN 397 and additional requirements for very low temperatures (-30 °C) and molten metal (MM) splash
- three variable air vents for maximum ventilation
- conventional suspension harness for comfortable adjustable fit (uvex pheos B)
- suspension harness with wheel ratchet for variable width adjustment (uvex pheos B-WR)
- fitted with the 9760005 sweatband
- six-point textile band attachment ensures optimal fit and comfort

| uvex pheos B | | | | | | |
|-----------------------|----------------|----------------|----------------|----------------|----------------|----------------|
| Art. no. | 9772020 | 9772120 | 9772220 | 9772320 | 9772520 | 9772920 |
| Colour | white | yellow | orange | red | blue | black |
| Version | with long brim | with long brim | with long brim | with long brim | with long brim | with long brim |
| Standard | EN 397 | EN 397 | EN 397 | EN 397 | EN 397 | EN 397 |
| | -30 °C, MM | -30 °C, MM | -30 °C, MM | -30 °C, MM | -30 °C, MM | -30 °C, MM |
| Sizes | 51 to 61 cm | 51 to 61 cm | 51 to 61 cm | 51 to 61 cm | 51 to 61 cm | 51 to 61 cm |
| Retail unit | 1 | 1 | 1 | 1 | 1 | 1 |
| Quantity in outer box | 25 | 25 | 25 | 25 | 25 | 25 |

| uvex pheos B-WR | | | | | | | |
|-----------------------|----------------|----------------|----------------|----------------|----------------|----------------|----------------|
| Art. no. | 9772030 | 9772130 | 9772230 | 9772330 | 9772430 | 9772530 | 9772930 |
| Colour | white | yellow | orange | red | green | blue | black |
| Version | with long brim | with long brim | with long brim | with long brim | with long brim | with long brim | with long brim |
| Standard | EN 397 | EN 397 | EN 397 | EN 397 | EN 397 | EN 397 | EN 397 |
| | -30 °C, MM | -30 °C, MM | -30 °C, MM | -30 °C, MM | -30 °C, MM | -30 °C, MM | -30 °C, MM |
| Sizes | 52 to 61 cm | 52 to 61 cm | 52 to 61 cm | 52 to 61 cm | 52 to 61 cm | 52 to 61 cm | 52 to 61 cm |
| Retail unit | 1 | 1 | 1 | 1 | 1 | 1 | 1 |
| Quantity in outer box | 25 | 25 | 25 | 25 | 25 | 25 | 25 |

Safety Helmets

uvex pheos B-S-WR · uvex pheos E · uvex pheos E-WR



9772332



9772832



9772932



uvex pheos B-S-WR

- safety helmet with slots for uvex visors, earmuffs and lamps
- side Euroslot adapters (30 mm) for attaching earmuffs
- meets standard EN 397 and additional requirements for very low temperatures (-30 °C) and molten metal (MM) splash
- three variable air vents for maximum ventilation
- suspension harness with wheel ratchet for variable width adjustment
- fitted with the 9760005 sweatband
- shorter brim for a wider field of upward vision
- six-point textile band attachment ensures optimal fit and comfort

| uvex pheos B-S-WR | | | | | | | |
|------------------------------|-----------------|-----------------|-----------------|-----------------|-----------------|-----------------|-----------------|
| Art. no. | 9772031 | 9772131 | 9772231 | 9772332 | 9772531 | 9772832 | 9772932 |
| Colour | white | yellow | orange | red | blue | dark grey | black |
| Version | with short brim | with short brim | with short brim | with short brim | with short brim | with short brim | with short brim |
| Standard | EN 397 | EN 397 | EN 397 | EN 397 | EN 397 | EN 397 | EN 397 |
| | -30 °C, MM | -30 °C, MM | -30 °C, MM | -30 °C, MM | -30 °C, MM | -30 °C, MM | -30 °C, MM |
| Sizes | 52 to 61 cm | 52 to 61 cm | 52 to 61 cm | 52 to 61 cm | 52 to 61 cm | 52 to 61 cm | 52 to 61 cm |
| Retail unit | 1 | 1 | 1 | 1 | 1 | 1 | 1 |
| Quantity in outer box | 25 | 25 | 25 | 25 | 25 | 25 | 25 |



9770020



9770120



9770230



9770430



9770530

uvex pheos E · uvex pheos E-WR

- safety helmet with slots for uvex visors, earmuffs and lamps
- side Euroslot adapters (30 mm) for attaching earmuffs
- suitable for use by electricians as helmet shell is fully enclosed
- meets standard EN 397 and additional requirements for very low temperatures (-30 °C) and molten metal (MM) splash and is approved in accordance with EN 50365 (1000 V AC)
- conventional suspension harness for comfortable adjustable fit (uvex pheos E)
- suspension harness with wheel ratchet for variable width adjustment (uvex pheos E-WR)
- fitted with the 9760005 (uvex pheos E) or 9760009 (uvex pheos E-WR) sweatband
- six-point textile band attachment ensures optimal fit and comfort

| uvex pheos E | | |
|------------------------------|---------------------|---------------------|
| Art. no. | 9770020 | 9770120 |
| Colour | white | yellow |
| Version | with long brim | with long brim |
| Standard | EN 397 | EN 397 |
| | EN 50365 (100 V AC) | EN 50365 (100 V AC) |
| | -30 °C, MM | -30 °C, MM |
| Sizes | 51 to 61 cm | 51 to 61 cm |
| Retail unit | 1 | 1 |
| Quantity in outer box | 25 | 25 |

| uvex pheos E-WR | | | | | | | |
|------------------------------|---------------------|---------------------|---------------------|---------------------|---------------------|---------------------|---------------------|
| Art. no. | 9770030 | 9770130 | 9770230 | 9770330 | 9770430 | 9770530 | 9770830 |
| Colour | white | yellow | orange | red | green | blue | dark grey |
| Version | with long brim | with long brim | with long brim | with long brim | with long brim | with long brim | with long brim |
| Standard | EN 397 | EN 397 | EN 397 | EN 397 | EN 397 | EN 397 | EN 397 |
| | EN 50365 (100 V AC) | EN 50365 (100 V AC) | EN 50365 (100 V AC) | EN 50365 (100 V AC) | EN 50365 (100 V AC) | EN 50365 (100 V AC) | EN 50365 (100 V AC) |
| | -30 °C, MM | -30 °C, MM | -30 °C, MM | -30 °C, MM | -30 °C, MM | -30 °C, MM | -30 °C, MM |
| Sizes | 52 to 61 cm | 52 to 61 cm | 52 to 61 cm | 52 to 61 cm | 52 to 61 cm | 52 to 61 cm | 52 to 61 cm |
| Retail unit | 1 | 1 | 1 | 1 | 1 | 1 | 1 |
| Quantity in outer box | 5 | 5 | 5 | 5 | 5 | 5 | 5 |

Safety Helmets

uvex pheos E-S-WR · uvex 9780 antistatic · uvex 9780 antistatic-WR



uvex pheos E-S-WR

- safety helmet with slots for uvex visors, earmuffs and lamps
- side Euroslot adapters (30 mm) for attaching earmuffs
- suitable for use by electricians as helmet shell is fully enclosed
- meets standard EN 397 and additional requirements for very low temperatures (-30 °C) and molten metal (MM) splash and is approved in accordance with EN 50365 (1000 V AC)
- suspension harness with wheel ratchet for variable width adjustment
- fitted with the 9760009 sweatband
- shorter brim for a wider field of upward vision
- six-point textile band attachment ensures optimal fit and comfort

| uvex pheos E-S-WR | | | | | | | | |
|-----------------------|---|---|---|---|---|---|---|---|
| Art. no. | 9770031 | 9770131 | 9770231 | 9770331 | 9770431 | 9770531 | 9770832 | 9770931 |
| Colour | white | yellow | orange | red | green | blue | dark grey | black |
| Version | with short brim | with short brim | with short brim | with short brim | with short brim | with short brim | with short brim | with short brim |
| Standard | EN 397 EN 50365 (1000 V AC) -30 °C, MM | EN 397 EN 50365 (1000 V AC) -30 °C, MM | EN 397 EN 50365 (1000 V AC) -30 °C, MM | EN 397 EN 50365 (1000 V AC) -30 °C, MM | EN 397 EN 50365 (1000 V AC) -30 °C, MM | EN 397 EN 50365 (1000 V AC) -30 °C, MM | EN 397 EN 50365 (1000 V AC) -30 °C, MM | EN 397 EN 50365 (1000 V AC) -30 °C, MM |
| Sizes | 52 to 61 cm | 52 to 61 cm | 52 to 61 cm | 52 to 61 cm | 52 to 61 cm | 52 to 61 cm | 52 to 61 cm | 52 to 61 cm |
| Retail unit | 1 | 1 | 1 | 1 | 1 | 1 | 1 | 1 |
| Quantity in outer box | 5 | 5 | 5 | 5 | 5 | 5 | 5 | 5 |



uvex 9780 antistatic · uvex 9780 antistatic-WR

- side Euroslot adapters (30 mm) for attaching earmuffs
- meets standard EN 397 and additional requirement for molten metal (MM) splash
- suitable for unrestricted application in accordance with Equipment Groups I and II for use in potentially explosive atmospheres (in accordance with ATEX Directive 94/9/EC)
- three variable air vents for maximum ventilation
- conventional suspension harness for comfortable adjustable fit (uvex 9870 antistatic)
- suspension harness with wheel ratchet for variable width adjustment (uvex 9870 antistatic-WR)
- fitted with the 9760005 sweatband
- six-point textile band attachment ensures optimal fit and comfort

| | uvex 9780 antistatic | uvex 9780 antistatic-WR | |
|-----------------------|-------------------------------------|-------------------------------------|-------------------------------------|
| Art. no. | 9780020 | 9780030 | 9780550 |
| Colour | white | white | sky blue |
| Version | with long brim | with long brim | with long brim |
| Standard | EN 397 ATEX Directive 94/9/EC | EN 397 ATEX Directive 94/9/EC | EN 397 ATEX Directive 94/9/EC |
| Sizes | 51 to 61 cm | 52 to 61 cm | 52 to 61 cm |
| Retail unit | 1 | 1 | 1 |
| Quantity in outer box | 25 | 25 | 25 |

Safety Helmets

uvex pheos alpine



uvex pheos alpine

- multifunctional helmet for working at heights and rescue operations
- combination of features from the industrial protection helmet (EN 397) with the requirements for a climbing helmet (EN 12492)
- side Euroslot adapters (30 mm) for attaching earmuffs
- options for attaching head torches, goggles and face protection
- meets standard EN 397 and additional requirement for very low temperatures (-30 °C)
- firmly riveted four-point chin strap for use in accordance with EN 12492
- chin strap included (art. no. 9790005) for use in accordance with EN 397
- light ABS helmet shell offers high level of protection and durability
- six-point textile band attachment ensures optimal fit and great comfort
- suspension harness with wheel ratchet for variable width adjustment
- fitted with the 9760009 sweatband
- shorter brim for a wider field of upward vision
- delivered as standard with a black PU sweatband (art. no. 9760009); there is also an option of a light sweatband made of synthetic leather (art. no. 9760005)



product
design award

2013

| uvex pheos alpine | | | | | | | |
|-----------------------|-----------------|-----------------|-----------------|-----------------|-----------------|-----------------|-----------------|
| Art. no. | 9773050 | 9773150 | 9773250 | 9773350 | 9773450 | 9773550 | 9773950 |
| Colour | white | yellow | orange | red | green | blue | black |
| Version | with short brim | with short brim | with short brim | with short brim | with short brim | with short brim | with short brim |
| Standard | EN 397 | EN 397 | EN 397 | EN 397 | EN 397 | EN 397 | EN 397 |
| | EN 12492 | EN 12492 | EN 12492 | EN 12492 | EN 12492 | EN 12492 | EN 12492 |
| | -30 °C | -30 °C | -30 °C | -30 °C | -30 °C | -30 °C | -30 °C |
| Sizes | 52 to 61 cm | 52 to 61 cm | 52 to 61 cm | 52 to 61 cm | 52 to 61 cm | 52 to 61 cm | 52 to 61 cm |
| Retail unit | 1 | 1 | 1 | 1 | 1 | 1 | 1 |
| Quantity in outer box | 6 | 6 | 6 | 6 | 6 | 6 | 6 |

Safety Helmets

uvex pheos forest · Reflective stripes



9774233

uvex pheos forestry worker set

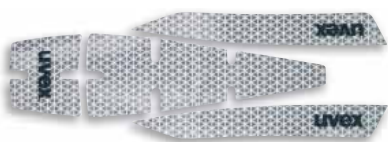
- set specially developed to meet the needs of forestry workers and consisting of the uvex pheos B-WR safety helmet 9772230, uvex dBex earmuffs complete 3000165 and metal mesh visor 9790044
- meets standards EN 166, 1731, 352-1 and 397 and additional requirement for very low temperatures (-30 °C)
- the mesh visor, which can be locked in position, protects the wearer from foreign bodies while maintaining clear vision
- earmuffs complete the safety helmet for all-round protection
- three variable air vents for maximum ventilation
- suspension harness with wheel ratchet for variable width adjustment

► **Note:**

If the set is to be used without hearing protection, additional adapters are required to attach the visor (art. no. 9790042).

| | |
|--------------------------------|-----------------------------------|
| uvex pheos forestry worker set | |
| Art. no. | 9774233 |
| Version | complete set for forestry work |
| Standard | EN 397, EN 1731, EN 352-1, EN 166 |
| | -30 °C |
| Colour | orange |
| Sizes | 52 to 61 cm |
| Retail unit | 1 |
| Quantity in outer box | 25 |

| | | |
|--|---|--------------------|
| Individual parts of the uvex pheos forestry worker set | | |
| Art. no. | | Retail unit |
| 9790040 | Helmet bracket | 1 unit |
| 9790044 | Mesh visor (metal) or | 1 unit |
| 9790043 | Mesh visor (nylon) | 1 unit |
| 3000165 | Earmuffs with helmet attachment uvex dBex 3000H | 1 pair |
| 9790042 | Adapter (for attaching without helmet earmuffs) | 1 pair |



9790018



uvex pheos reflex set L
(select preferred helmet colour)

uvex pheos reflex set M

- highly reflective sticker set
- extremely high brightness with prism film
- easy to affix
- suitable for all uvex pheos and uvex pheos alpine safety helmets

| | |
|-------------------------|---------|
| uvex pheos reflex set M | |
| Art. no. | 9790018 |
| Retail unit | 1 |

uvex pheos reflex set L

- safety helmet with highly reflective sticker set
- helmets are delivered with the stickers already applied
- customized helmets cannot be exchanged

► Please contact our service hotline free of charge on **+49 911 9736-0**.

| | | |
|-------------------------|---------------|---|
| uvex pheos reflex set L | | |
| Art. no. | Colour | Version |
| 9772026 | white | uvex pheos B with reflective sticker |
| 9772126 | yellow | uvex pheos B with reflective sticker |
| 9772226 | orange | uvex pheos B with reflective sticker |
| 9772326 | red | uvex pheos B with reflective sticker |
| 9772526 | blue | uvex pheos B with reflective sticker |
| 9772926 | black | uvex pheos B with reflective sticker |
| 9772035 | white | uvex pheos B-WR with reflective sticker |
| 9772138 | yellow | uvex pheos B-WR with reflective sticker |
| 9772236 | orange | uvex pheos B-WR with reflective sticker |
| 9772437 | green | uvex pheos B-WR with reflective sticker |
| 9772538 | blue | uvex pheos B-WR with reflective sticker |
| 9772936 | black | uvex pheos B-WR with reflective sticker |
| 9772038 | white | uvex pheos B-S-WR with reflective sticker |
| 9772137 | yellow | uvex pheos B-S-WR with reflective sticker |
| 9772239 | orange | uvex pheos B-S-WR with reflective sticker |
| 9772334 | red | uvex pheos B-S-WR with reflective sticker |
| 9772537 | blue | uvex pheos B-S-WR with reflective sticker |
| 9770026 | white | uvex pheos E with reflective sticker |
| 9770126 | yellow | uvex pheos E with reflective sticker |
| 9770036 | white | uvex pheos E-WR with reflective sticker |
| 9770136 | yellow | uvex pheos E-WR with reflective sticker |
| 9770536 | blue | uvex pheos E-WR with reflective sticker |

Safety Helmets

uvex airwing B · uvex airwing B-WR · uvex super boss



uvex airwing B · uvex airwing B-WR

- safety helmet with slots for uvex visors and earmuffs
- side Euroslot adapters (30 mm) for attaching earmuffs
- meets standard EN 397 and additional requirement for very low temperatures (-30 °C)
- three variable air vents for maximum ventilation
- conventional suspension harness for comfortable adjustable fit (uvex airwing B)
- suspension harness with wheel ratchet for variable width adjustment (uvex airwing B-WR)
- fitted with the 9760005 sweatband
- six-point textile band attachment ensures optimal fit and comfort

| uvex airwing B | | | | | | | |
|-----------------------|----------------|----------------|----------------|----------------|----------------|----------------|----------------|
| Art. no. | 9762020 | 9762120 | 9762220 | 9762320 | 9762420 | 9762520 | 9762920 |
| Colour | white | yellow | orange | red | green | blue | black |
| Version | with long brim | with long brim | with long brim | with long brim | with long brim | with long brim | with long brim |
| Standard | EN 397 | EN 397 | EN 397 | EN 397 | EN 397 | EN 397 | EN 397 |
| | -30 °C | -30 °C | -30 °C | -30 °C | -30 °C | -30 °C | -30 °C |
| Sizes | 51 to 61 cm | 51 to 61 cm | 51 to 61 cm | 51 to 61 cm | 51 to 61 cm | 51 to 61 cm | 51 to 61 cm |
| Retail unit | 1 | 1 | 1 | 1 | 1 | 1 | 1 |
| Quantity in outer box | 25 | 25 | 25 | 25 | 25 | 25 | 25 |

| uvex airwing B-WR | | | | | | |
|-----------------------|----------------|----------------|----------------|----------------|----------------|----------------|
| Art. no. | 9762030 | 9762130 | 9762230 | 9762330 | 9762430 | 9762530 |
| Colour | white | yellow | orange | red | green | blue |
| Version | with long brim | with long brim | with long brim | with long brim | with long brim | with long brim |
| Standard | EN 397 | EN 397 | EN 397 | EN 397 | EN 397 | EN 397 |
| | -30 °C | -30 °C | -30 °C | -30 °C | -30 °C | -30 °C |
| Sizes | 52 to 61 cm | 52 to 61 cm | 52 to 61 cm | 52 to 61 cm | 52 to 61 cm | 52 to 61 cm |
| Retail unit | 1 | 1 | 1 | 1 | 1 | 1 |
| Quantity in outer box | 25 | 25 | 25 | 25 | 25 | 25 |



uvex super boss

- safety helmet with slots for uvex visors and earmuffs
- side Euroslot adapters (30 mm) for attaching earmuffs
- meets standard EN 397 and additional requirement for very low temperatures (-20 °C)
- conventional suspension harness for comfortable adjustable fit
- fitted with the 9790004 sweatband
- adjustable side ventilation slits
- six-point textile band attachment ensures optimal fit and comfort

| uvex super boss | | | |
|-----------------------|----------------|----------------|----------------|
| Art. no. | 9750020 | 9750120 | 9750520 |
| Colour | white | yellow | blue |
| Version | with long brim | with long brim | with long brim |
| Standard | EN 397 | EN 397 | EN 397 |
| | -20 °C | -20 °C | -20 °C |
| Sizes | 52 to 61 cm | 52 to 61 cm | 52 to 61 cm |
| Retail unit | 1 | 1 | 1 |
| Quantity in outer box | 25 | 25 | 25 |

Safety Helmets

uvex airwing B-S · uvex airwing B-S-WR · uvex thermo boss



uvex airwing B-S · uvex airwing B-S-WR

- safety helmet with slots for uvex visors and earmuffs
- side Euroslot adapters (30 mm) for attaching earmuffs
- meets standard EN 397 and additional requirement for very low temperatures (-30 °C)
- three variable air vents for maximum ventilation
- conventional suspension harness for comfortable adjustable fit (uvex airwing B-S)
- suspension harness with wheel ratchet for variable width adjustment (uvex airwing B-S-WR)
- fitted with the 9760005 sweatband
- shorter brim for a wider field of upward vision
- six-point textile band attachment ensures optimal fit and comfort

| uvex airwing B-S | | | | | | |
|------------------------------|-----------------|-----------------|-----------------|-----------------|-----------------|-----------------|
| Art. no. | 9762021 | 9762121 | 9762221 | 9762321 | 9762421 | 9762521 |
| Colour | white | yellow | orange | red | green | blue |
| Version | with short brim | with short brim | with short brim | with short brim | with short brim | with short brim |
| Standard | EN 397 | EN 397 | EN 397 | EN 397 | EN 397 | EN 397 |
| | -30 °C | -30 °C | -30 °C | -30 °C | -30 °C | -30 °C |
| Sizes | 51 to 61 cm | 51 to 61 cm | 51 to 61 cm | 51 to 61 cm | 51 to 61 cm | 51 to 61 cm |
| Retail unit | 1 | 1 | 1 | 1 | 1 | 1 |
| Quantity in outer box | 25 | 25 | 25 | 25 | 25 | 25 |

| uvex airwing B-S-WR | | | | | | |
|------------------------------|-----------------|-----------------|-----------------|-----------------|-----------------|-----------------|
| Art. no. | 9762031 | 9762131 | 9762231 | 9762331 | 9762431 | 9762531 |
| Colour | white | yellow | orange | red | green | blue |
| Version | with short brim | with short brim | with short brim | with short brim | with short brim | with short brim |
| Standard | EN 397 | EN 397 | EN 397 | EN 397 | EN 397 | EN 397 |
| | -30 °C | -30 °C | -30 °C | -30 °C | -30 °C | -30 °C |
| Sizes | 52 to 61 cm | 52 to 61 cm | 52 to 61 cm | 52 to 61 cm | 52 to 61 cm | 52 to 61 cm |
| Retail unit | 1 | 1 | 1 | 1 | 1 | 1 |
| Quantity in outer box | 25 | 25 | 25 | 25 | 25 | 25 |



uvex thermo boss

- safety helmet with slots for uvex visors and earmuffs
- the helmet shell is made from heat-resistant polycarbonate and is suitable for use in high ambient temperatures.
- side Euroslot adapters (30 mm) for attaching earmuffs
- meets standard EN 397 and additional requirement (440 V AC) +150 °C
- conventional suspension harness for comfortable adjustable fit
- fitted with the 9790004 sweatband
- six-point textile band attachment ensures optimal fit and comfort

| uvex thermo boss | | | |
|------------------------------|----------------|----------------|----------------|
| Art. no. | 9754000 | 9754100 | 9754300 |
| Colour | white | yellow | red |
| Version | with long brim | with long brim | with long brim |
| Standard | EN 397 | EN 397 | EN 397 |
| | +150 °C | +150 °C | +150 °C |
| | 440 V AC | 440 V AC | 440 V AC |
| Sizes | 52 to 61 cm | 52 to 61 cm | 52 to 61 cm |
| Retail unit | 1 | 1 | 1 |
| Quantity in outer box | 25 | 25 | 25 |

Safety Helmets

uvex pheos visor system



uvex pheos visor

- polycarbonate visors with uvex supravision excellence coating technology
- available with two alternative mountings: mechanical levers or automatic magnetic locks
- visors 9906002 and 9906003 are compatible with the uvex pheos E-S-WR and uvex pheos B-S-WR safety helmets, as well as with the uvex pheos alpine safety helmet for working at heights (the visor adapter art. no. 9790067 is required for combination with the uvex pheos alpine safety helmet)
- visors uvex pheos SLB 1 and uvex pheos SLB 2 can be combined with the uvex pheos E-S-WR safety helmet
- visor 9906002 can be combined with earmuffs uvex pheos K2H (mechanical), art. no. 2600204
- visor 9906003 can be combined with earmuffs uvex pheos K2H magnet, art.no. 2600205
- lenses can be changed
- meets standards EN 166 and EN 170, and also certified for areas of application 3 (liquids) and 9 (molten metal and hot solids)
- uvex pheos SLB 1 (art. no. 9906005 and art. no. 9906006) visors are certified in accordance with GS-ET 29 as Class 1 visors for protection from electrical arcs (4 kA)
- uvex pheos SLB 2 (art. no. 9906007 and art. no. 9906008) visors are certified in accordance with GS-ET 29 as Class 2 visors for protection from electrical arcs (7 kA)

► Helmet not included!

| | | |
|-------------------------|---|---|
| | uvex pheos | uvex pheos magnetic |
| Art. no. | 9906002 | 9906003 |
| Replacement lens | 9906013 | 9906013 |
| Version | uvex supravision excellence with mechanical levers | uvex supravision excellence with magnetic levers |
| Standard | EN 166, EN 170 | EN 166, EN 170 |
| Frame | black | black |
| | W 166 3 8-2 9 B CE 0196 | W 166 3 8-2 9 B CE 0196 |
| Lens | PC clear | PC clear |
| | UV 400 | UV 400 |
| | 2C-1.2 W 1 B 9 KN CE 0196 | 2C-1.2 W 1 B 9 KN CE 0196 |
| Retail unit | 1 | 1 |
| | uvex pheos SLB 1 | uvex pheos SLB 1 magnetic |
| Art. no. | 9906005 | 9906006 |
| Replacement lens | 9906012 | 9906012 |
| Version | uvex supravision excellence certified as Class 1 visor for protection from electrical arcs, with mechanical levers | uvex supravision excellence certified as Class 1 visor for protection from electrical arcs, with magnetic levers |
| Standard | EN 166, EN 170 | EN 166, EN 170 |
| Frame | black | black |
| | W 166 3 8-2 9 B CE 0196 | W 166 3 8-2 9 B CE 0196 |
| Lens | PC clear | PC clear |
| | UV 400 | UV 400 |
| | 2C-1.2 W 1 B 8-1-0 9 KN CE 0196 | 2C-1.2 W 1 B 8-1-0 9 KN CE 0196 |
| Retail unit | 1 | 1 |
| | uvex pheos SLB 2 | uvex pheos SLB 2 magnetic |
| Art. no. | 9906007 | 9906008 |
| Replacement lens | 9906017 | 9906017 |
| Version | uvex supravision excellence certified as Class 2 visor for protection from electrical arcs with mechanical levers and chin protection | uvex supravision excellence certified as Class 2 visor for protection from electrical arcs with magnetic levers and chin protection |
| Standard | EN 166, EN 170 | EN 166, EN 170 |
| Frame | black | black |
| | W 166 3 8-2 9 B CE 0196 | W 166 3 8-2 9 B CE 0196 |
| Lens | PC blue | PC blue |
| | UV 400 | UV 400 |
| | 2C-1.2 W 1 B 8-2-0 9 KN CE 0196 | 2C-1.2 W 1 B 8-2-0 9 KN CE 0196 |
| Retail unit | 1 | 1 |

Safety Helmets

uvex pheos visor system



9790067



9790074



9790078



9954362

uvex pheos visor system

| | | |
|--------------------|---|--|
| | Visor adapter | Helmet adapter |
| Art. no. | 9790067 | 9790078 |
| Version | for combination with the uvex pheos alpine safety helmet for working at heights (visor not included) | Helmet adapter for the earmuffs uvex pheos K2H magnet (2600205) |
| Retail unit | 1 | 1 pair |
| | Sunglare filter/rain cover | Microfibre case |
| Art. no. | 9790074 | 9954326 |
| Version | for protection against the sun and rain; cannot be combined with uvex pheos SLB 1 and uvex pheos SLB 2 visors | cloth bag to store and transport uvex visors and uvex helmets, black |
| Retail unit | 1 | 1 |



uvex pheos visors in combination with uvex safety helmets

| | Art. no. | Visor frame | Visor | Protection | Suitable helmets | Earmuffs |
|--|----------|-------------|---|--|--|--|
| | 9906002 | mechanical | polycarbonate, clear | against mechanical influences (e.g. sparks, splinters) | all uvex pheos helmets with short brim | 2600204 |
| | 9906003 | magnetic | polycarbonate, clear | against mechanical influences (e.g. sparks, splinters) | uvex pheos alpine (with visor adapter 9790067) | 2600205 |
| | 9906005 | mechanical | polycarbonate, clear with UV absorber | against electrical arcs up to 4 kA (kiloamperes) | uvex pheos E-S-WR | Available from the first quarter of 2019 |
| | 9906006 | magnetic | polycarbonate, clear with UV absorber | against electrical arcs up to 4 kA (kiloamperes) | | |
| | 9906007 | mechanical | polycarbonate, blue with UV absorber and chin section | against electrical arcs up to 7 kA (kiloamperes) | | |
| | 9906008 | magnetic | polycarbonate, blue with UV absorber and chin section | against electrical arcs up to 7 kA (kiloamperes) | | |

Safety Helmets

uvex Visors



9790048



9790047



9924010



9725514
9726014

uvex 9790

- robust polycarbonate visor for the uvex industrial safety helmets and uvex K1H and K2H helmet earmuffs (for combination options, see 91)
- additional adapters (art. no. 9924010) are required for the helmet and visor combination

► Helmet, helmet bracket and earmuffs are not included.

| | |
|--------------------|---|
| Lens | |
| Art. no. | 9790048 |
| Version | uncoated |
| | Classification 8, against effect of electrical arcs |
| Standard | EN 166, EN 170 |
| Lens | PC clear, UV 400 |
| | 2C-1.2 W 1 A 89 CE |
| Retail unit | 1 |
| Helmet bracket | |
| Art. no. | 9790047 |
| Frame | black |
| | EN 166 389 A CE |
| Retail unit | 1 |
| Adapter | |
| Art. no. | 9924010 |
| Version | Adapter for attaching without earmuffs |
| Retail unit | 1 |

uvex 9725 · uvex 9726

- polycarbonate and cellulose acetate visors with specially developed adapters for attaching on the side helmet slots
- easy to change lenses
- not combinable with earmuffs

► Helmet not included!

| | | |
|-------------------------|--------------------------|--------------------------|
| Visors | | |
| Art. no. | 9725514 | 9726014 |
| Replacement lens | 9050517 | 9723017 |
| Version | anti-fog on the inside | uncoated |
| | Material thickness: 1 mm | Material thickness: 1 mm |
| Standard | EN 166, EN 170 | EN 166, EN 170 |
| Frame | black | black |
| | W 166 3-F DIN CE 0196 | W 166 3-B DIN CE 0196 |
| Lens | CA clear, UV 380 | PC clear, UV 400 |
| | W 1 FN DIN CE | W 1 B DIN CE |
| Retail unit | 1 | 1 |

Safety Helmets

Face protection · Wide-vision goggles with a helmet bracket



9705014



9707014



9302510



9706514



9708514



9301544

uvex 9705 · uvex 9706

- cellulose acetate visor with integrated forehead cover
- easy to change lenses
- cannot be combined with safety helmets
- flip-up mechanism with continuous adjustment
- head size can be easily adjusted using a twist lock

uvex 9707 · uvex 9708

- cellulose acetate visor with integrated forehead cover and additional protective cap made from impact-resistant polystyrene
- easy to change lenses
- flip-up mechanism with continuous adjustment
- head size can be easily adjusted using a twist lock

uvex goggles with helmet bracket

- ▶ Helmet and earmuffs not included!
- ▶ Additional adapters are required for attaching the goggles without earmuffs:
Art. no. 9924010

| Visors | | | | |
|-------------------------|-----------------------|------------------------|-----------------------|------------------------|
| Art. no. | 9705014 | 9706514 | 9707014 | 9708514 |
| Replacement lens | 9060017 | 9050517 | 9060017 | 9050517 |
| Version | uncoated | anti-fog on the inside | uncoated | anti-fog on the inside |
| Standard | EN 166, EN 170 | EN 166, EN 170 | EN 166, EN 170 | EN 166, EN 170 |
| Frame | black | black | black | black |
| | W 166 3-F DIN CE 0196 | W 166 3-F DIN CE 0196 | W 166 3-F DIN CE 0196 | W 166 3 F DIN CE 0196 |
| Lens | CA clear, UV 380 | CA clear, UV 380 | CA clear, UV 380 | CA clear, UV 380 |
| | W 1 F DIN CE | W 1 FN DIN CE | W 1 F DIN CE | W 1 F DIN CE |
| Retail unit | 1 | 1 | 1 | 1 |

| uvex ultrasonic | |
|--------------------|--|
| Art. no. | 9302510 |
| Version | uvex supervision extreme reduced ventilation |
| Standard | EN 166, EN 170 |
| Frame | blue, grey |
| | W 166 349 B CE |
| Lens | PC clear, UV 400 |
| | 2-1.2 W 1 B 9 KN DIN CE |
| Retail unit | 4 |

| uvex ultravision | |
|--------------------|---------------------|
| Art. no. | 9301544 |
| Version | anti-fog |
| Standard | EN 166, EN 170 |
| Frame | transparent grey |
| | W 166 34 F CE |
| Lens | CA clear, UV 380 |
| | 2-1.2 W 1 FN DIN CE |
| Retail unit | 1 |

Safety Helmets

Accessories



9790065
with safety helmet
(helmet not included)

9790075
with safety helmet
(helmet not included)

9790076
with safety helmet
(helmet not included)

9790068

9790066

9790086
with safety helmet
(helmet not included)

9790086

uvex winter cap uvex balaclava

- winter cap for use in all uvex helmets
- windproof and waterproof outer material
- all-around reflective strip
- side mesh to increase the wearer's attention to environmental influences (ear area)
- warming fleece lining
- uvex balaclava is the ideal addition to the winter cap – with continuous size adjustment through hinged Velcro fastening

uvex neck protection uvex cooling neck protection

- uvex neck protection for protection against rain, dust, splinters and solar radiation
- for use with all uvex helmets
- fitted with mount 9772002 to attach the neck protection in the uvex pheos helmet shell
- **cooling neck protection:** protection against solar radiation, cooling by evaporation for two to eight hours

| | uvex winter cap | uvex winter cap | uvex balaclava | uvex neck protection | uvex neck protection | uvex cooling neck protection |
|-----------------------|------------------|------------------|----------------|----------------------|----------------------|------------------------------|
| Art. no. | 9790065 | 9790068 | 9790066 | 9790075 | 9790076 | 9790086 |
| Version | polyester/fleece | polyester/fleece | fleece | polyester | polyester | polyester |
| Colour | hi-viz yellow | hi-viz orange | black | orange | yellow | yellow |
| Sizes | unisize | unisize | unsize | unsize | unsize | unsize |
| Retail unit | 1 | 1 | 1 | 1 | 1 | 1 |
| Quantity in outer box | 10 | 10 | 10 | 50 | 50 | 50 |



9790006

9790010

9790015

9790016

9790012

Paper caps - Winter caps

| | Paper cap | Winter caps | Winter caps | Winter caps | Winter caps |
|-----------------------|---|--|---|---|--|
| Art. no. | 9790006 | 9790010 | 9790015 | 9790016 | 9790012 |
| Version | Hygienic caps made of soft, comfortable fleece for visitors | Winter cap for wearing under the helmet, knitted (WIN) | Winter cap for wearing under the helmet | Winter cap for wearing under the helmet | Winter cap for wearing under the helmet knitted (Alaska) |
| Colour | white | black | black | black | black |
| Sizes | unsize | unsize | S to M | L to XL | unsize |
| Retail unit | 100 | 10 | 10 | 10 | 10 |
| Quantity in outer box | 800 | 10 | 10 | 10 | 10 |

Safety Helmets

Accessories



Accessories for uvex super boss and uvex thermo boss

| | | |
|------------------------------|---|--|
| | Suspension harness for uvex super boss and uvex thermo boss | Sweatband for uvex super boss and uvex thermo boss |
| Art. no. | 9790000 | 9790004 |
| Version | six-point textile strap with sweatband | leather |
| Retail unit | 1 | 1 |
| Quantity in outer box | 10 | 10 |



Accessories for uvex pheos IES

| | | |
|------------------------------|--|--------------------------------------|
| | Suspension harness IES for uvex pheos | Sweatband for IES suspension harness |
| Art. no. | 9772001 | 9760007 |
| Version | plastic suspension harness with uvex pheos mount | textile/foam material |
| Retail unit | 1 | 1 |
| Quantity in outer box | 10 | 10 |



Accessories for uvex pheos E-WR and uvex pheos alpine

| | | |
|------------------------------|--|--|
| | Suspension harness for uvex pheos E-WR | Suspension harness for uvex pheos alpine |
| Art. no. | 9760012 | 9760011 |
| Version | six-point textile strap with sweatband | six-point textile strap with sweatband |
| Retail unit | 1 | 1 |
| Quantity in outer box | 10 | 10 |

| | | |
|------------------------------|---|-----------------------|
| | Sweatband for uvex pheos alpine and uvex pheos E-WR | Wheel ratchet padding |
| Art. no. | 9760009 | 9760014 |
| Version | PU, leather | polyester |
| Retail unit | 1 | 10 |
| Quantity in outer box | 10 | 10 |



Accessories for uvex pheos, uvex airwing and uvex 9780 antistatic

| | | |
|------------------------------|--|---|
| | Suspension harness for uvex pheos and uvex airwing with conventional equipment | Suspension harness for uvex pheos and uvex airwing with wheel ratchet (not for uvex pheos E-WR) |
| Art. no. | 9760000 | 9760001 |
| Version | six-point textile strap with sweatband | |
| Retail unit | 1 | 1 |
| Quantity in outer box | 10 | 10 |

| | | |
|------------------------------|--|--|
| | Suspension harness for uvex 9780 antistatic with wheel ratchet | Sweatband for uvex pheos, uvex pheos alpine, uvex 9780 antistatic and uvex airwing |
| Art. no. | 9780001 | 9760005 |
| Version | six-point textile strap with sweatband | synthetic leather |
| Retail unit | 1 | 1 |
| Quantity in outer box | 10 | 10 |

Safety Helmets

Accessories



Accessories for uvex pheos, uvex pheos alpine, uvex airwing, uvex 9780 antistatic, uvex super boss and uvex thermo boss

| | | |
|------------------------------|--|--|
| | Leather chin straps for uvex pheos (not for pheos IES and pheos E), uvex pheos alpine, uvex airwing, uvex superboss and uvex thermo boss | |
| Art. no. | 9790005 | |
| Version | robust leather version with plastic eyelets, length can be adjusted | |
| Retail unit | 10 | |
| Quantity in outer box | 10 | |

| | | |
|------------------------------|---|---|
| | Forked chin straps for uvex airwing | Leather chin strap for uvex pheos IES and uvex 9780 antistatic |
| Art. no. | 9790007 | 9790035 |
| Version | textile band with push-buttonquick-action fastener plastic eyelets and chin pad, length can be adjusted | robust leather version with plastic eyelets, length can be adjusted |
| Retail unit | 1 | 10 |
| Quantity in outer box | 10 | 10 |

| | | |
|------------------------------|--|--|
| | Forked chin straps for uvex pheos (not for uvex pheos alpine) and uvex 9780 antistatisch | |
| Art. no. | 9790021 | |
| Version | plastic | |
| Retail unit | 1 | |
| Quantity in outer box | 10 | |

| | | |
|------------------------------|---|--------------------------|
| | IES mount with sliding element for uvex pheos IES | Penholder for uvex pheos |
| Art. no. | 9772002 | 9790023 |
| Version | plastic | plastic |
| Retail unit | 10 | 1 |
| Quantity in outer box | 10 | 10 |

| | | |
|------------------------------|--|--|
| | IES mount with sliding element uvex pheos s for uvex pheos IES | IES mount with sliding element uvex i-works for uvex pheos IES |
| Art. no. | 9790084 | 9790085 |
| Version | plastic | plastic |
| Retail unit | 10 | 10 |
| Quantity in outer box | 10 | 10 |

| | | |
|------------------------------|--|--|
| | Goggles clip for uvex pheos/ chin strap clip for uvex pheos alpine | |
| Art. no. | 9790022 | |
| Version | plastic | |
| Retail unit | 1 | |
| Quantity in outer box | 10 | |

| | | |
|------------------------------|---|--|
| | Business card holder | |
| Art. no. | 9790106 | |
| Version | 1 unit includes 10 holders + 20 PVC cards | |
| Retail unit | 1 | |
| Quantity in outer box | 100 | |

| | | |
|------------------------------|---|------------------------------|
| | uvex helmet bag for storing and transporting the uvex safety helmet | Helmet slot sealing plug set |
| Art. no. | 9790071 | 9790077 |
| Version | nylon | plastic |
| Retail unit | 1 | 1 |
| Quantity in outer box | - | 50 |

Accessories

uvex pheos



| | uvex pheos B | uvex pheos B-WR | uvex pheos B-S-WR | uvex pheos E | uvex pheos E-WR | uvex pheos E-S-WR | uvex pheos IES | uvex 9780 antistatisch | uvex pheos alpine |
|---|--------------|-----------------|-------------------|--------------|-----------------|-------------------|----------------|------------------------|-------------------|
| 9760000 Conventional suspension harness | ■ | ■ | ■ | ■ | ■ | ■ | ■ | - | - |
| 9760001 Suspension harness with rotating size adjusters | ■ | ■ | ■ | - | - | - | ■ | - | - |
| 9760011 Suspension harness for pheos alpine | - | - | - | - | - | - | - | - | ■ |
| 9760012 Suspension harness for uvex pheos E-WR | ■ | ■ | ■ | ■ | ■ | ■ | ■ | - | - |
| 9772001 Suspension harness IES | ■ | ■ | ■ | - | - | - | ■ | - | - |
| 9780001 Suspension harness with rotating size adjusters | ■ | ■ | ■ | - | - | - | ■ | ■ | - |
| 9760009 Sweatband uvex pheos alpine and uvex pheos E-WR | ■ | ■ | ■ | ■ | ■ | ■ | ■ | ■ | - |
| 9760007 Sweatband IES | - | - | - | - | - | - | ■ | - | - |
| 9760005 Sweatband, synthetic leather | ■ | ■ | ■ | ■ | ■ | ■ | - | ■ | - |
| 9790035 Leather chin straps IES | ■ | ■ | ■ | - | - | - | ■ | - | - |
| 9790005 Leather chin straps | ■ | ■ | ■ | - | - | - | - | - | ■ |
| 9790021 Forked chin straps | ■ | ■ | ■ | ■ | ■ | ■ | ■ | ■ | - |
| 9790023 Pen holder | ■ | ■ | ■ | ■ | ■ | ■ | ■ | - | - |
| 9772002 Mount | - | - | - | - | - | - | ■ | - | - |
| 9790022 Goggles clip, chin strap clip | ■ | ■ | ■ | ■ | ■ | ■ | ■ | - | ■ |
| 9790065 Winter cap, hi-viz yellow | ■ | ■ | ■ | ■ | ■ | ■ | ■ | - | ■ |
| 9790066 Balaclava | ■ | ■ | ■ | ■ | ■ | ■ | ■ | - | ■ |
| 9790068 Winter cap, hi-viz orange | ■ | ■ | ■ | ■ | ■ | ■ | ■ | - | ■ |
| 9790075 Neck protection, orange | ■ | ■ | ■ | ■ | ■ | ■ | ■ | - | ■ |
| 9790076 Neck protection, yellow | ■ | ■ | ■ | ■ | ■ | ■ | ■ | - | ■ |
| 9790086 uvex cooling neck protection | ■ | ■ | ■ | ■ | ■ | ■ | ■ | - | ■ |
| 9906002 uvex pheos visor | - | - | ■ | - | - | ■ | - | - | ■ |
| 9906003 uvex pheos visor SLB1 | - | - | - | - | - | ■ | - | - | - |
| 9906005 uvex pheos visor SLB2 | - | - | - | - | - | ■ | - | - | - |
| 9906006 uvex pheos visor SLB2 | - | - | - | - | - | ■ | - | - | - |
| 2600201 uvex K1H | ■ | ■ | ■ | - | - | - | ■ | - | ■ |
| 2600202 uvex K2H | ■ | ■ | ■ | - | - | - | ■ | - | ■ |
| 9790062 LED head torch pheos Lights | ■ | ■ | ■ | - | - | - | ■ | - | ■ |
| 9790063 LED head torch pheos Lights EX | ■ | ■ | ■ | - | - | - | ■ | ■ | ■ |
| 9790029 LED head torch KS-6001 Duo | ■ | ■ | ■ | - | - | - | ■ | - | ■ |
| 9790064 LED head torch u-cap sport | ■ | ■ | ■ | - | - | - | ■ | - | ■ |
| 9790069 uvex pheos helmet adapter | ■ | ■ | ■ | ■ | ■ | ■ | ■ | - | ■ |

■ supplied as standard

■ compatible

- not compatible

Accessories

uvex airwing · uvex super boss · uvex thermo boss



| | uvex airwing B | uvex airwing B-W/R | uvex airwing B-S | uvex airwing B-S-W/R | uvex super boss | uvex thermo boss |
|---------|---|--------------------|------------------|----------------------|-----------------|------------------|
| 9760000 | Conventional suspension harness | ■ | ■ | ■ | - | - |
| 9760001 | Suspension harness with rotating size adjusters | ■ | ■ | ■ | - | - |
| 9790000 | Suspension harness for uvex super boss / uvex thermo boss | - | - | - | ■ | ■ |
| 9760005 | Sweatband | ■ | ■ | ■ | - | - |
| 9790004 | Sweatband for uvex super boss / uvex thermo boss | - | - | - | ■ | ■ |
| 9790005 | Leather chin straps | ■ | ■ | ■ | ■ | ■ |
| 9790007 | Forked chin straps | ■ | ■ | ■ | ■ | ■ |
| 9790065 | Winter cap, yellow | ■ | ■ | ■ | ■ | ■ |
| 9790066 | Balaclava | ■ | ■ | ■ | ■ | ■ |
| 9790068 | Winter cap, orange | ■ | ■ | ■ | ■ | ■ |
| 9790075 | Neck protection, orange | ■ | ■ | ■ | ■ | ■ |
| 9790076 | Neck protection, yellow | ■ | ■ | ■ | ■ | ■ |
| 9790086 | uvex cooling neck protection | ■ | ■ | ■ | ■ | ■ |
| 9790047 | Helmet bracket uvex 9790 | ■ | ■ | ■ | ■ | ■ |
| 9790048 | Visor lens, PC | ■ | ■ | ■ | ■ | ■ |
| 2600201 | uvex K1H | ■ | ■ | ■ | ■ | ■ |
| 2600202 | uvex K2H | ■ | ■ | ■ | ■ | ■ |

■ supplied as standard

■ compatible

- not compatible



Safety Helmets

Accessories: Head torchs

► All uvex LED head torches fit into the front slot of the uvex pheos, uvex pheos alpine and uvex 9780 antistatic.



9790062
9790063

LED head torch pheos Lights · pheos Lights EX

- LED helmet torch with two separate reflectors for distance and area lighting
- compact design, developed for the uvex pheos visor system
- four different operating modes
- power source: 1.7 Ah-Li-Ion battery
- luminous flux: up to max. 115 lumen
- luminous flux: up to min. 55 lumen
- light duration: 25 hours
- operating temperature: -20 °C to + 60 °C
- charge adapter and micro-USB charger included
- 9790063: ATEX certification II 2G Ex ib IIC T4
- protection class IP 67 (dust-tight and waterproof)

| | LED head torch pheos Lights | LED head torch pheos Lights EX |
|--------------------|-----------------------------|--------------------------------|
| Art. no. | 9790062 | 9790063 |
| | for uvex pheos helmets | for uvex pheos helmets – ATEX |
| Retail unit | 1 | 1 |



9790029



LED head torch KS-6001-DUO

- LED head torch with two switching steps
- power source: lithium battery, charge time < 7 hrs
- luminous flux: up to max. 55 lumen
- luminous intensity: emergency light > 200 lux, normal light > 1400 lux
- light duration: emergency light > 80 hrs, normal light > 11 hrs
- operating temperature: -20 °C to +60 °C
- charger included
- protection class IP67 (watertight up to 1 m deep)

| | LED head torch KS-6001-DUO |
|--------------------|--|
| Art. no. | 9790029 |
| Version | for uvex pheos, uvex pheos alpine and uvex 9780 antistatic helmets |
| Retail unit | 1 unit |



9790064



LED head torch u-cap sport

- LED head torch with two separate reflectors for distance and area lighting
- power source: 3 x AAA batteries (not included)
- luminous flux: up to max. 100 lumen
- luminous range: 3 to 80 m (depending on the light mode used)
- light duration: 30 to 150 hrs (depending on the light mode used)
- operating temperature: -20 °C to +45 °C
- simple attachment to the uvex u-cap sport impact cap with magnet adapter
- impact cap adapter and headband are included
- protection class IP 66 (complete protection against dust and powerful water jets)

| | LED head torch uvex u-cap sport |
|--------------------|---------------------------------|
| Art. no. | 9790064 |
| Version | for uvex u-cap sport |
| Retail unit | 1 |



9790069

uvex pheos helmet adapter

- Adapter for the LED head torch u-cap sport for combining with the uvex pheos and uvex pheos alpine helmets

| | uvex pheos helmet adapter |
|--------------------|---|
| Art. no. | 9790069 |
| Version | for LED head torch uvex u-cap sport for combining with the uvex pheos and uvex pheos alpine helmets |
| Retail unit | 1 |



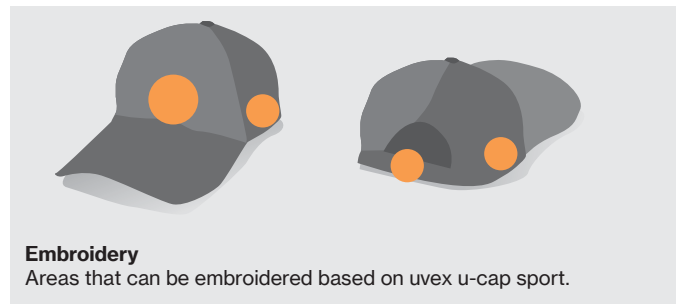
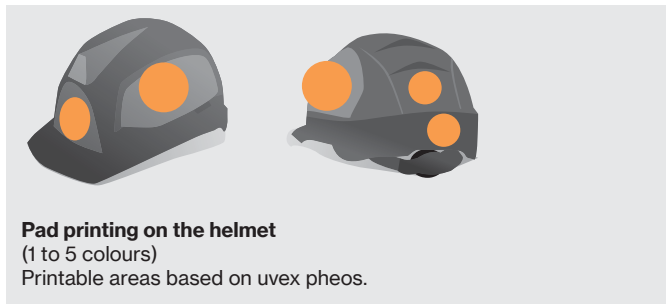
Safety helmets to match your corporate identity

Individual safety helmets

uvex gives you the option to customise all uvex helmets and bump caps so that your employees' equipment matches your corporate identity specifications.

Please contact the uvex service centre with your requests at any time.

Tel. +49 911 9736-0 · Email: serviceteam@uvex.de



| Customisation on the helmet | uvex pheos, uvex airwing, uvex superboss, uvex thermoboss | uvex pheos alpine |
|--|--|--------------------------------------|
| Special colour | from 300 units with supplemental charge from 600 units no additional cost | from 600 units no additional cost |
| new variant: | | |
| - existing colour as a variant, electrician or chemist | from 300 units | |
| - existing colour with shortened brim | from 100 units | |
| - existing helmet, other interior, with chin strap | from 25 units | |
| Finish: Printed, sticker, reflex set | from 25 units reorder quantity: 25 units | |

| Customisation of bump caps | |
|------------------------------|------------------|
| Special colour | from 1,000 units |
| new variant: | |
| - with existing colour | from 600 units |
| Finish: Embroidered, printed | from 25 units |

Please note the following conditions:

- minimum order value 25 caps
- reorder quantity: 25 units
- number of colours to be embroidered: up to 14
- textile cap in special colour: from 1000 units
- vector file (.eps, .ai) and image file (.jpg, .pdf) required as template

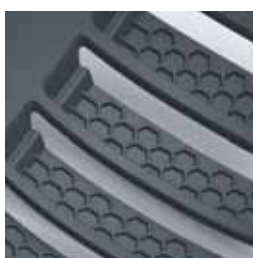
How individual can you be?

We will be happy to advise you on the technical options for customising our safety helmets.

uvex u-cap sport

Guaranteed head protection with a sporty design

Reliable protection that looks good: uvex u-cap sport is an innovative baseball bump cap in accordance with Norm EN 812. The ergonomically shaped hard shell with integrated shock-absorbing elements ensures safety and optimal comfort. To give your team a uniform appearance, this model is also available as a standard baseball cap for employees working in environments where head protection is not compulsory.



Integrated shock-absorbing elements with honeycomb structure

The specially developed honeycomb structure of the cap with integrated shock-absorbing elements ensures complete protection in accordance with EN 812.



Armadillo design gives flexibility

The armadillo design of the uvex u-cap sport provides additional flexibility and ergonomically adapts to different head shapes and sizes. The extended cut-out near the ear makes it easier to wear earmuffs.



Continuously adjustable

The uvex u-cap sport can be quickly and easily fitted to the head using the adjustable velcro fastening.



Magnetic head torch

- Simple to use: magnetic fixing enables easy attachment and removal from u-cap sport
- The beam can be directed in multiple directions through a moving joint, ensuring optimal illumination
- Switch between various beam types

uvex u-cap sport

A wide range for many applications



9794400 9794443
9794401 9794423
9794402 9794425



9794409 9794442
9794403 9794422
9794404 9794424



9794110



9794415



9794111

uvex u-cap sport

| | | | | | | |
|------------------------------|-----------------|-------------|-------------|---|-------------|-------------|
| uvex u-cap sport | | | | | | |
| Art. no. | 9794409 | 9794403 | 9794404 | 9794442 | 9794422 | 9794424 |
| Version | with short brim | | | with short brim and mesh webbing suspension harness | | |
| Standard | EN 812 | EN 812 | EN 812 | EN 812 | EN 812 | EN 812 |
| Colour | black | black | black | black | black | black |
| Sizes | 52 to 54 cm | 55 to 59 cm | 60 to 63 cm | 52 to 54 cm | 55 to 59 cm | 60 to 63 cm |
| Retail unit | 1 | 1 | 1 | 1 | 1 | 1 |
| Quantity in outer box | 60 | 60 | 60 | 60 | 60 | 60 |
| | | | | | | |
| Art. no. | 9794400 | 9794401 | 9794402 | 9794443 | 9794423 | 9794425 |
| Version | with long brim | | | with long brim and mesh webbing suspension harness | | |
| Standard | EN 812 | EN 812 | EN 812 | EN 812 | EN 812 | EN 812 |
| Colour | black | black | black | black | black | black |
| Sizes | 52 to 54 cm | 55 to 59 cm | 60 to 63 cm | 52 to 54 cm | 55 to 59 cm | 60 to 63 cm |
| Retail unit | 1 | 1 | 1 | 1 | 1 | 1 |
| Quantity in outer box | 60 | 60 | 60 | 60 | 60 | 60 |

uvex u-cap sport suspension harness

| | |
|-------------------------------------|---|
| uvex u-cap sport suspension harness | |
| Art. no. | 9794415 |
| Version | soft, comfortable mesh webbing suspension harness increased wearer comfort in uvex u-cap sport bump caps |
| Standard | EN 812 |
| Colour | black |
| Sizes | unisize |
| Retail unit | 1 |
| Quantity in outer box | 60 |

Baseball cap

| | | |
|------------------------------|--|---|
| Baseball cap | | |
| Art. no. | 9794110 | 9794111 |
| Version | with long brim without hard shell element | with short brim without hard shell element |
| Colour | black | black |
| Sizes | 55 to 63 cm | 55 to 63 cm |
| Retail unit | 1 | 1 |
| Quantity in outer box | 60 | 60 |



9794407
9794408



9794430 9794444
9794420 9794416
9794421 9794417



9794480
9794481
9794482



9794490
9794491
9794492



uvex u-cap sport

| uvex u-cap sport | | |
|-----------------------|----------------|-------------|
| Art. no. | 9794407 | 9794408 |
| Version | with long brim | |
| Standard | EN 812 | EN 812 |
| Colour | navy blue | navy blue |
| Sizes | 55 to 59 cm | 60 to 63 cm |
| Retail unit | 1 | 1 |
| Quantity in outer box | 60 | 60 |

uvex u-cap sport vent

| uvex u-cap sport vent | | | |
|-----------------------|----------------------------------|-------------|-------------|
| Art. no. | 9794430 | 9794420 | 9794421 |
| Version | with short brim and mesh webbing | | |
| Standard | EN 812 | EN 812 | EN 812 |
| Colour | black | black | black |
| Sizes | 52 to 54 cm | 55 to 59 cm | 60 to 63 cm |
| Retail unit | 1 | 1 | 1 |
| Quantity in outer box | 60 | 60 | 60 |

| | | | |
|-----------------------|--|-------------|-------------|
| Art. no. | 9794444 | 9794416 | 9794417 |
| Version | with short brim, mesh webbing and mesh webbing interior for improved ventilation | | |
| Standard | EN 812 | EN 812 | EN 812 |
| Colour | black | black | black |
| Sizes | 52 to 54 cm | 55 to 59 cm | 60 to 63 cm |
| Retail unit | 1 | 1 | 1 |
| Quantity in outer box | 60 | 60 | 60 |

uvex u-cap sport hi-viz

| uvex u-cap sport hi-viz | | | | | | |
|-------------------------|---|---------------|---------------|---------------|---------------|---------------|
| Art. no. | 9794482 | 9794480 | 9794481 | 9794492 | 9794490 | 9794491 |
| Version | with short brim and textile components in signal colours, in accordance with the requirements of EN 471 – offering greater visibility and safety for the user | | | | | |
| Standard | EN 812 | EN 812 | EN 812 | EN 812 | EN 812 | EN 812 |
| Colour | hi-viz yellow | hi-viz yellow | hi-viz yellow | hi-viz orange | hi-viz orange | hi-viz orange |
| Sizes | 52 to 54 cm | 55 to 59 cm | 60 to 63 cm | 52 to 54 cm | 55 to 59 cm | 60 to 63 cm |
| Retail unit | 1 | 1 | 1 | 1 | 1 | 1 |
| Quantity in outer box | 60 | 60 | 60 | 60 | 60 | 60 |

uvex u-cap

uvex u-cap premium · uvex u-cap basic



uvex u-cap premium · uvex u-cap basic · uvex u-cap hi-viz

- premium bump cap with an exceptional design
- protects against abrasions and impact injuries
- integrated reflective piping on the brim and textile components
- colours of the textile components comply with the requirements of EN 471, offering greater visibility and safety for the user (uvex u-cap hi-viz)
- flexible plastic shell adapts to different head shapes and sizes
- foam pad inlay for increased comfort (uvex u-cap basic)
- comfortable suspension harness for great functionality and maximum wearer comfort (uvex u-cap premium)
- continuous size adjustment using adjustable band

| uvex u-cap premium | | | | |
|-----------------------|----------------|-----------------|----------------|-----------------|
| Art. no. | 9794300 | 9794301 | 9794310 | 9794311 |
| Version | with long brim | with short brim | with long brim | with short brim |
| Standard | EN 812 | EN 812 | EN 812 | EN 812 |
| Colour | anthracite | anthracite | anthracite | anthracite |
| Sizes | unisize | unisize | unisize | unisize |
| Retail unit | 1 | 1 | 1 | 1 |
| Quantity in outer box | 25 | 25 | 25 | 25 |

| uvex u-cap basic | | uvex u-cap hi-viz | |
|-----------------------|-----------------------------------|---|---------------|
| Art. no. | 9794200 | 9794800 | 9794900 |
| Version | with long brim and foam pad inlay | with long brim and textile components in signal colours, meeting the requirements on EN 471 | |
| Standard | EN 812 | EN 812, EN 471 | |
| Colour | anthracite | hi-viz yellow | hi-viz orange |
| Sizes | unisize | unisize | unisize |
| Retail unit | 1 | 1 | 1 |
| Quantity in outer box | 25 | 25 | 25 |

► **EN 812-compliant impact caps provide protection from injuries caused by hitting fixed objects. Caps do not provide sufficient protection against falling objects and can only be used in situations where a safety helmet is not obligatory as per EN 397.**

Safety Helmets

Overview

| Art. no. | Name | Description | Colour | Page |
|----------|---------------------|---|------------|---------|
| 3000165 | | Helmet bracket | | 105 |
| 9050517 | | Replacement lens, CA, non-fogging | clear | 110/111 |
| 9060017 | | Replacement lens, CA | clear | 111 |
| 9301544 | uvex ultravision | Wide-vision goggles with helmet bracket, | grey | 111 |
| 9302510 | uvex ultrasonic | Wide-vision goggles with helmet bracket, | blue, grey | 111 |
| 9705014 | | Cellulose acetate protective visor | clear | 111 |
| 9706514 | | Antifog cellulose acetate protective visor, | clear | 111 |
| 9707014 | | Cellulose acetate protective visor | clear | 111 |
| 9708514 | | Antifog cellulose acetate protective visor, | clear | 111 |
| 9723017 | | Replacement lens, PC | clear | 110 |
| 9725514 | | Antifog cellulose acetate visor | clear | 110 |
| 9726014 | | Polycarbonate visor | clear | 110 |
| 9750020 | uvex super boss | Safety helmet | white | 106 |
| 9750120 | uvex super boss | Safety helmet | yellow | 106 |
| 9750520 | uvex super boss | Safety helmet | blue | 106 |
| 9754000 | uvex thermo boss | Safety helmet | white | 107 |
| 9754100 | uvex thermo boss | Safety helmet | yellow | 107 |
| 9754300 | uvex thermo boss | Safety helmet | red | 107 |
| 9760000 | Accessories | Conventional suspension harness | | 113 |
| 9760001 | Accessories | Suspension harness with rotating size adjusters | | 113 |
| 9760005 | Accessories | Sweatband, synthetic leather | | 113 |
| 9760007 | Accessories | Sweatband, textile/foam material | | 113 |
| 9760009 | Accessories | Sweatband, PU/leather | | 113 |
| 9760011 | uvex pheos alpine | Suspension harness | | 113 |
| 9760012 | uvex pheos E-WR | Suspension harness | | 113 |
| 9762020 | uvex airwing B | Safety helmet | white | 106 |
| 9762021 | uvex airwing B-S | Safety helmet | white | 107 |
| 9762030 | uvex airwing B-WR | Safety helmet | white | 106 |
| 9762031 | uvex airwing B-S-WR | Safety helmet | white | 107 |
| 9762120 | uvex airwing B | Safety helmet | yellow | 106 |
| 9762121 | uvex airwing B-S | Safety helmet | yellow | 107 |
| 9762130 | uvex airwing B-WR | Safety helmet | yellow | 106 |
| 9762131 | uvex airwing B-S-WR | Safety helmet | yellow | 107 |
| 9762220 | uvex airwing B | Safety helmet | orange | 106 |
| 9762221 | uvex airwing B-S | Safety helmet | orange | 107 |
| 9762230 | uvex airwing B-WR | Safety helmet | orange | 106 |
| 9762231 | uvex airwing B-S-WR | Safety helmet | orange | 107 |
| 9762320 | uvex airwing B | Safety helmet | red | 106 |
| 9762321 | uvex airwing B-S | Safety helmet | red | 107 |
| 9762330 | uvex airwing B-WR | Safety helmet | red | 106 |
| 9762331 | uvex airwing B-S-WR | Safety helmet | red | 107 |
| 9762420 | uvex airwing B | Safety helmet | green | 106 |
| 9762421 | uvex airwing B-S | Safety helmet | green | 107 |
| 9762430 | uvex airwing B-WR | Safety helmet | green | 106 |
| 9762431 | uvex airwing B-S-WR | Safety helmet | green | 107 |
| 9762520 | uvex airwing B | Safety helmet | blue | 106 |
| 9762521 | uvex airwing B-S | Safety helmet | blue | 107 |
| 9762530 | uvex airwing B-WR | Safety helmet | blue | 106 |
| 9762531 | uvex airwing B-S-WR | Safety helmet | blue | 107 |
| 9762920 | uvex airwing B | Safety helmet | black | 106 |
| 9770020 | uvex pheos E | Safety helmet | white | 102 |
| 9770026 | uvex pheos E | Safety helmet with reflective sticker | white | 105 |
| 9770030 | uvex pheos E-WR | Safety helmet | white | 102 |
| 9770031 | uvex pheos E-S-WR | Safety helmet | white | 103 |
| 9770036 | uvex pheos E-WR | Safety helmet with reflective sticker | white | 105 |
| 9770120 | uvex pheos E | Safety helmet | yellow | 102 |

| Art. no. | Name | Description | Colour | Page |
|----------|-----------------------|---------------------------------------|-----------|------|
| 9770126 | uvex pheos E | Safety helmet with reflective sticker | yellow | 105 |
| 9770130 | uvex pheos E-WR | Safety helmet | yellow | 102 |
| 9770131 | uvex pheos E-S-WR | Safety helmet | yellow | 103 |
| 9770136 | uvex pheos E-WR | Safety helmet with reflective sticker | yellow | 105 |
| 9770230 | uvex pheos E-WR | Safety helmet | orange | 102 |
| 9770231 | uvex pheos E-S-WR | Safety helmet | orange | 103 |
| 9770330 | uvex pheos E-WR | Safety helmet | red | 102 |
| 9770331 | uvex pheos E-S-WR | Safety helmet | red | 103 |
| 9770430 | uvex pheos E-WR | Safety helmet | green | 102 |
| 9770431 | uvex pheos E-S-WR | Safety helmet | green | 103 |
| 9770530 | uvex pheos E-WR | Safety helmet | blue | 102 |
| 9770531 | uvex pheos E-S-WR | Safety helmet | blue | 103 |
| 9770830 | uvex pheos E-WR | Safety helmet | dark grey | 102 |
| 9770832 | uvex pheos E-S-WR | Safety helmet | dark grey | 103 |
| 9770931 | uvex pheos E-S-WR | Safety helmet | black | 103 |
| 9772001 | Accessories | Suspension harness IES | | 113 |
| 9772002 | Accessories | Mount | | 114 |
| 9772020 | uvex pheos B | Safety helmet | white | 101 |
| 9772026 | uvex pheos B | Safety helmet with reflective sticker | white | 105 |
| 9772030 | uvex pheos B-WR | Safety helmet | white | 101 |
| 9772031 | uvex pheos B-S-WR | Safety helmet | white | 102 |
| 9772035 | uvex pheos B-WR | Safety helmet with reflective sticker | white | 105 |
| 9772038 | uvex pheos B-S-WR | Safety helmet with reflective sticker | white | 105 |
| 9772040 | uvex pheos IES | Safety helmet | white | 100 |
| 9772071 | uvex pheos ABS B-S-WR | Safety helmet | white | 101 |
| 9772120 | uvex pheos B | Safety helmet | yellow | 101 |
| 9772126 | uvex pheos B | Safety helmet with reflective sticker | yellow | 105 |
| 9772130 | uvex pheos B-WR | Safety helmet | yellow | 101 |
| 9772131 | uvex pheos B-S-WR | Safety helmet | yellow | 102 |
| 9772137 | uvex pheos B-S-WR | Safety helmet with reflective sticker | yellow | 105 |
| 9772138 | uvex pheos B-WR | Safety helmet with reflective sticker | yellow | 105 |
| 9772140 | uvex pheos IES | Safety helmet | yellow | 100 |
| 9772171 | uvex pheos ABS B-S-WR | Safety helmet | yellow | 101 |
| 9772220 | uvex pheos B | Safety helmet | orange | 101 |
| 9772226 | uvex pheos B | Safety helmet with reflective sticker | orange | 105 |
| 9772230 | uvex pheos B-WR | Safety helmet | orange | 101 |
| 9772236 | uvex pheos B-WR | Safety helmet with reflective sticker | orange | 105 |
| 9772240 | uvex pheos IES | Safety helmet | orange | 100 |
| 9772320 | uvex pheos B | Safety helmet | red | 101 |
| 9772326 | uvex pheos B | Safety helmet with reflective sticker | red | 105 |
| 9772330 | uvex pheos B-WR | Safety helmet | red | 101 |
| 9772332 | uvex pheos B-S-WR | Safety helmet | red | 102 |
| 9772340 | uvex pheos IES | Safety helmet | red | 100 |
| 9772430 | uvex pheos B-WR | Safety helmet | green | 101 |
| 9772520 | uvex pheos B | Safety helmet | blue | 101 |
| 9772526 | uvex pheos B | Safety helmet with reflective sticker | red | 105 |
| 9772530 | uvex pheos B-WR | Safety helmet | blue | 101 |
| 9772531 | uvex pheos B-S-WR | Safety helmet | blue | 102 |
| 9772537 | uvex pheos B-S-WR | Safety helmet with reflective sticker | blue | 105 |
| 9772538 | uvex pheos B-WR | Safety helmet with reflective sticker | blue | 105 |
| 9772540 | uvex pheos IES | Safety helmet | blue | 100 |
| 9772832 | uvex pheos B-S-WR | Safety helmet | dark grey | 102 |
| 9772920 | uvex pheos B | Safety helmet | black | 101 |
| 9772926 | uvex pheos B | Safety helmet with reflective sticker | black | 105 |
| 9772930 | uvex pheos B-WR | Safety helmet | black | 101 |
| 9772932 | uvex pheos B-S-WR | Safety helmet | black | 102 |



Safety Helmets

Overview

| Art. no. | Name | Description | Colour | Page | Art. no. | Name | Description | Colour | Page |
|----------|-------------------------|---|---------------|------|----------|---------------------------|-----------------------------|---------------|------|
| 9772936 | uvex pheos B-WR | Safety helmet with reflective sticker | black | 105 | 9794311 | uvex u-cap premium | Impact cap with short brim | anthracite | 122 |
| 9773050 | uvex pheos alpine | Safety helmet | white | 104 | 9794400 | uvex u-cap sport | Impact cap, size 52 – 54 cm | black | 120 |
| 9773150 | uvex pheos alpine | Safety helmet | yellow | 104 | 9794401 | uvex u-cap sport | Impact cap, size 55 – 59 cm | black | 120 |
| 9773250 | uvex pheos alpine | Safety helmet | orange | 104 | 9794402 | uvex u-cap sport | Impact cap, size 60 – 63 cm | black | 120 |
| 9773350 | uvex pheos alpine | Safety helmet | red | 104 | 9794403 | uvex u-cap sport | Impact cap, size 55 – 59 cm | black | 120 |
| 9773450 | uvex pheos alpine | Safety helmet | green | 104 | 9794404 | uvex u-cap sport | Impact cap, size 60 – 63 cm | black | 120 |
| 9773550 | uvex pheos alpine | Safety helmet | blue | 104 | 9794407 | uvex u-cap sport | Impact cap, size 55 – 59 cm | navy blue | 121 |
| 9773950 | uvex pheos alpine | Safety helmet | black | 104 | 9794408 | uvex u-cap sport | Impact cap, size 60 – 63 cm | navy blue | 121 |
| 9774233 | uvex pheos | Forestry worker set | orange | 105 | 9794409 | uvex u-cap sport | Impact cap, size 52 – 54 cm | black | 120 |
| 9780001 | Accessories | Suspension harness with rotating size adjusters | | 113 | 9794415 | uvex u-cap sport | Suspension harness | black | 120 |
| 9780020 | uvex 9780 antistatic | Safety helmet | white | 103 | 9794416 | uvex u-cap sport vent | Impact cap, size 55 – 59 cm | black | 121 |
| 9780030 | uvex 9780 antistatic-WR | Safety helmet | white | 103 | 9794417 | uvex u-cap sport vent | Impact cap, size 60 – 63 cm | black | 121 |
| 9780550 | uvex 9780 antistatic-WR | Safety helmet | sky blue | 103 | 9794420 | uvex u-cap sport vent | Impact cap, size 55 – 59 cm | black | 121 |
| 9790000 | Accessories | Suspension harness | | 113 | 9794421 | uvex u-cap sport vent | Impact cap, size 60 – 63 cm | black | 121 |
| 9790004 | Accessories | Sweatband, leather | | 113 | 9794422 | uvex u-cap sport | Impact cap, size 55 – 59 cm | black | 120 |
| 9790005 | Accessories | Leather chin straps | | 114 | 9794423 | uvex u-cap sport | Impact cap, size 55 – 59 cm | black | 120 |
| 9790006 | Accessories | Paper cap | white | 112 | 9794424 | uvex u-cap sport | Impact cap, size 60 – 63 cm | black | 120 |
| 9790007 | Accessories | Forked chin straps | | 114 | 9794425 | uvex u-cap sport | Impact cap, size 60 – 63 cm | black | 120 |
| 9790010 | Accessories | Winter cap | black | 112 | 9794430 | uvex u-cap sport vent | Impact cap, size 52 – 54 cm | black | 121 |
| 9790012 | Accessories | Winter cap | black | 112 | 9794442 | uvex u-cap sport | Impact cap, size 52 – 54 cm | black | 120 |
| 9790015 | Accessories | Winter cap | black | 112 | 9794443 | uvex u-cap sport | Impact cap, size 52 – 54 cm | black | 120 |
| 9790016 | Accessories | Winter cap | black | 112 | 9794444 | uvex u-cap sport vent | Impact cap, size 52 – 54 cm | black | 121 |
| 9790018 | uvex pheos reflex set M | Reflective set | | 105 | 9794480 | uvex u-cap sport hi-viz | Impact cap, size 55 – 59 cm | hi-viz yellow | 121 |
| 9790021 | Accessories | Forked chin straps | | 114 | 9794481 | uvex u-cap sport hi-viz | Impact cap, size 60 – 63 cm | hi-viz yellow | 121 |
| 9790022 | Accessories | Goggles clip/chin strap clip | | 114 | 9794482 | uvex u-cap sport hi-viz | Impact cap, size 52 – 54 cm | hi-viz yellow | 121 |
| 9790023 | Accessories | Pen holder | | 114 | 9794490 | uvex u-cap sport hi-viz | Impact cap, size 55 – 59 cm | hi-viz orange | 121 |
| 9790029 | Accessories | LED head torch KS-6001-DUO | | 117 | 9794491 | uvex u-cap sport hi-viz | Impact cap, size 60 – 63 cm | hi-viz orange | 121 |
| 9790035 | Accessories | Leather chin straps | | 114 | 9794492 | uvex u-cap sport hi-viz | Impact cap, size 52 – 54 cm | hi-viz orange | 121 |
| 9790040 | Accessories | Helmet bracket | | 105 | 9794800 | uvex u-cap hi-viz | Impact cap with long brim | hi-viz yellow | 122 |
| 9790042 | Accessories | Adapter for attaching without helmet earmuffs | | 105 | 9794900 | uvex u-cap hi-viz | Impact cap with long brim | hi-viz orange | 122 |
| 9790043 | Accessories | Mesh visor (nylon) | | 105 | 9906002 | uvex pheos | Visor | clear | 108 |
| 9790044 | Accessories | Mesh visor (metal) | | 105 | 9906003 | uvex pheos magnetic | Visor | clear | 108 |
| 9790047 | Accessories | Helmet bracket | black | 110 | 9906005 | uvex pheos SLB 1 | Visor | clear | 108 |
| 9790048 | Accessories | Visor lens, PC | clear | 110 | 9906006 | uvex pheos SLB 1 magnetic | Visor | clear | 108 |
| 9790062 | Accessories | LED head torch pheos Lights | | 117 | 9906007 | uvex pheos SLB 2 | Visor | blue | 108 |
| 9790063 | Accessories | LED head torch pheos Lights EX | | 117 | 9906008 | uvex pheos SLB 2 magnetic | Visor | blue | 108 |
| 9790064 | Accessories | LED head torch u-cap sport | | 117 | 9906012 | | Replacement lens | clear | 108 |
| 9790065 | Accessories | Winter cap | hi-viz yellow | 112 | 9906013 | | Replacement lens | clear | 108 |
| 9790066 | Accessories | Balaclava | black | 112 | 9906017 | | Replacement lens | blue | 108 |
| 9790067 | Accessories | Visor adapter | black | 109 | 9924010 | Accessories | Adapter | black | 110 |
| 9790068 | Accessories | Winter cap | hi-viz orange | 112 | 9954362 | Accessories | Cloth bag for uvex visors | black | 109 |
| 9790069 | Accessories | Helmet adapter for LED head torch u-cap sport | | 117 | | | | | |
| 9790071 | Accessories | Helmet bag | | 114 | | | | | |
| 9790074 | Accessories | Sunglare filter/rain cover | | 109 | | | | | |
| 9790075 | Accessories | Neck protection | orange | 112 | | | | | |
| 9790076 | Accessories | Neck protection | yellow | 112 | | | | | |
| 9790077 | Accessories | Helmet slot sealing plug set | | 114 | | | | | |
| 9790078 | Accessories | Helmet adapter | | 109 | | | | | |
| 9790084 | Accessories | IES mount with sliding element | | 114 | | | | | |
| 9790085 | Accessories | IES mount with sliding element | | 114 | | | | | |
| 9790086 | Accessories | cooling neck protection | | 112 | | | | | |
| 9790106 | Accessories | Business card holder | | 114 | | | | | |
| 9794110 | Baseball cap | with long brim, size 55 – 63 cm | black | 120 | | | | | |
| 9794111 | Baseball cap | with short brim, size 55 – 63 cm | black | 120 | | | | | |
| 9794200 | uvex u-cap basic | Basic impact cap | anthracite | 122 | | | | | |
| 9794300 | uvex u-cap premium | Impact cap with long brim | anthracite | 122 | | | | | |
| 9794301 | uvex u-cap premium | Impact cap with short brim | anthracite | 122 | | | | | |
| 9794310 | uvex u-cap premium | Impact cap with long brim | anthracite | 122 | | | | | |