



**uvex**

Breathing  
Protection

**uvex**

uvex 5/6 FR

# uvex silv-Air

## Functions and breathing protection



The **360° exhalation valve** considerably reduces breathing resistance and build-up of heat and moisture in the mask.



The **4-point headband attachment** allows an individual and secure fit, which can be perfectly adapted to meet the wearer's requirements.



**Comfort sealing lip**  
The soft sealing lip guarantees a secure, comfortable sealed positioning of the mask.



The masks are **individually** packed and meet the highest standards of hygiene.



**Comfortable sealing lip in the nose area**  
The soft sealing lip in the nose area guarantees a secure, pressure-free fit.



**Carbon inside**  
The additional activated carbon layer incorporated in the filter material reduces unpleasant odours.



**Comfort nose clip**  
The mask is fitted with a high-quality nose clip making it individually adjustable.



**D labelling**  
The mask has undergone additional dolomite dust testing and therefore affords excellent breathability, even in extremely dusty environments and during longer periods of use.



The uvex silv-Air c filtering face mask range is suitable for protection against solid and liquid aerosols, dust, mist and fume, but does not provide sufficient protection against gases and steams above the threshold level!

All filtering face masks have been tested and certified in accordance with EN 149, "Respiratory protective devices, filtering half masks to protect against particles." They conform to the EU guideline 89/686/EEC. In addition, the masks meet the highest international standards: NIOSH, AUS/NZ, SABS & GOST certified.

They are classified under the protection factor classes P1, P2 / N95 or P3 according to the filter performance and leakage value.

## How particle-filtering face masks work

Particle-filtering face masks protect against solid aerosols. The densely woven filter fabric prevents solid materials from passing through due to their particle size. The internal layers are electrostatically charged, so hazardous materials adhere to them and cannot be inhaled.

In environments with a high volume of hazardous materials, masks can “clog-up” during use. Breathing resistance increases as the 15th volume of particulates is absorbed by the filter material and when breathing becomes difficult the old mask should be replaced.



Filter layers

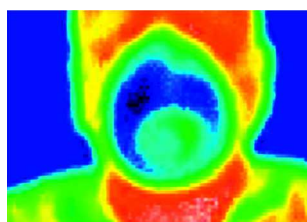


## Breathing resistance

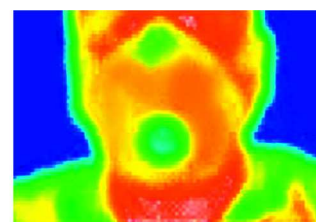
In addition to an excellent fit and soft material edges, low breathing resistance is the key factor in determining mask comfort and therefore the willingness to wear a particle-filtering face mask.

The carefully chosen combination of highly functional filter materials used in the uvex silv-Air c range provides maximum protection while making breathing easier.

Thermal imaging of the silv-Air c pre-formed mask (art. no. 8732.210, FFP2 / N95 with exhalation valve) illustrates the functionality of the filter materials while breathing.



Inhaling – cool surrounding air (blue) is inhaled



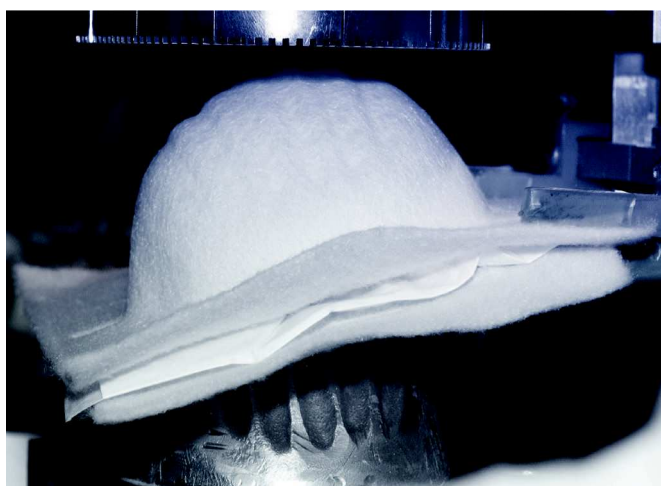
Exhaling – warm air (orange-red) is exhaled

## Materials and processing

The uvex silv-Air c range was developed specifically with comfort in mind. uvex fine-dust filter technology ensures the individual layers “clog-up” at a slower rate.

All products have successfully passed the penetration test under controlled temperature conditions in accordance with EN 149.

All products also bear the “D” symbol, which confirms that the masks can absorb an extremely high volume of materials with only a minimum increase in breathing resistance. The “D” symbol is defined by the absorption (7.17) of dolomite dust in the EN 149 standard.



## uvex silv-Air Areas of application



Activity	Harmful substances	Protection class		
		FFP 1	FFP2 / N95	FFP3
<b>Wood processing</b>				
Softwood: cutting and sanding	Fine particles, wood dust		■	
Hard wood (oak, beech, tropical woods, etc.): cutting and sanding	Fine particles, wood dust			■
Brushing/sanding paint	Fine colour particles		■	
Brushing/sanding paint (paints containing chrome)	Fine colour particles			■
Soluble paints containing copper/chrome/arsenic	Fine paint mist			■
<b>Construction and ancillary building industry</b>				
Cement work, plastering, tiling, roofing	Cement, plaster, tile or brick dust		■	
Masonry: cutting, drilling, demolition			■	
Asbestos: short periods of work	Fibres			■
Roof insulation: glass and mineral fibres	Dust and fibres		■	
Bodyfillers/stopper: Grinding	Dust		■	
<b>Welding</b>				
Welding aluminium and stainless steel	Metal and aluminium oxide fumes			■
Brazing	Fumes			■
<b>Metalwork</b>				
Metal: drilling, grinding, milling, angle grinding	Metal dust		■	
High-alloy steels and stainless steels: drilling, grinding, milling, angle grinding	Metal dust			■
<b>Waste disposal and cleaning</b>				
Refuse separation and disposal	Dust, fungi		■	
Medical waste disposal	Bacteria, spores			■
Sweeping floors	Dust (non-toxic)	■		
Radioactively contaminated particles	Dust			■
<b>Agriculture</b>				
Animal epidemics and treatment of animals with diseases	Bacteria, viruses			■
Work with fungal spores	Spores			■
Work with hay, grain and flour	Dust	■		
<b>Medicine/care/health</b>				
Allergies, pollen, household dust, animal fur	Dust, particles, spores		■	
Bacteria, viruses, infections, legionella bacteria	Bacteria, viruses			■

► These filter classes are minimum requirements and simply serve as a guide. It is the wearers' responsibility to make sure the breathing apparatus conforms to the requirements in terms of hazardous materials and concentration before use!

### Particle filters are divided into three classes:

#### FFP1

For particles that are neither toxic nor associated with fibrosis. For protection up to 4 times the corresponding threshold limit value (MAK\*).

#### FFP2 / N95

For hazardous or harmful particles, vapour and smoke; filters for solid and liquid particles with a medium filtering level. For protection up to 10 times the corresponding threshold value (MAK\*, TRK\*\*).

#### FFP3

For poisonous particles, vapour and smoke; filters for solid and liquid aerosols with a high filtering classification. For protection up to 30 times the corresponding threshold limit value (MAK\*, TRK\*\*).

\* MAK = maximum concentration at the workplace: MAK values are determined by the German Commission for the Investigation of Health Hazards of Chemical Compounds in the Work Area.

\*\* TRK = technical reference concentration: the concentration of a hazardous material that can be contained by the latest technology. TRK values are applied to carcinogenic materials for which there is no MAK value available. A health risk cannot be completely ruled out.

uvex silv-Air c  
Respirators



uvex silv-Air c

		FFP 1		FFP2 / N95			FFP 3	
flatfold								
	3100 NR D	3110 NR D	3200 NR D	3210 NR D	3220 NR D	3310 NR D		
cup style								
	2100 NR D	2110 NR D	2200 NR D	2210 NR D	2220 NR D	2310 NR D	2312 NR D	

# uvex silv-Air c

Respirators, class FFP1 and FFP2 / N95



## Filtering face mask uvex silv-Air c

- Innovative design with an optimised shape
- Soft material edges for greater comfort and wearer acceptance
- Seamless headband for a comfortable, secure fit
- Exhalation valve for easy airflow exchange and reduces the build-up of heat and moisture inside the mask
- Adjustable nose clip ensures an excellent individual fit
- Mask fulfils the requirements of the dolomite dust test
- Compatible with uvex safety eyewear
- Upper face seal offers both secure positioning and comfort
- Activated carbon filter, suitable for welding applications available in the FFP2 / N95 (uvex silv-Air c 2220 and 3220) option



The adjustable nose clip ensures an excellent individual fit and secure positioning.



The soft material edges prevent uncomfortable pressure points.



The seamless headband can be adjusted for an optimum fit.



The exhalation valve with a 360° opening ensures very low breathing resistance and a cooling effect climate inside the mask.



The upper face seal offers both a more secure positioning of the mask and increased wearer comfort.

uvex silv-Air c  
Filtering face masks, protection class FFP1



3100



3110

**uvex silv-Air 3100**

FFP1 folding mask without valve.

<b>Art. no.</b>	8733.100
<b>Type</b>	FFP1 folding mask without valve
<b>Colour</b>	white
<b>Retail unit</b>	30 per box

**uvex silv-Air 3110**

FFP1 folding mask with valve.

<b>Art. no.</b>	8733.110
<b>Type</b>	FFP1 folding mask with valve
<b>Colour</b>	white
<b>Retail unit</b>	15 per box



2100



2110

**uvex silv-Air 2100**

FFP1 preformed mask without valve.

<b>Art. no.</b>	8732.100
<b>Type</b>	FFP1 preformed mask without valve
<b>Colour</b>	white
<b>Retail unit</b>	20 per box

**uvex silv-Air 2110**

FFP1 preformed mask with valve.

<b>Art. no.</b>	8732.110
<b>Type</b>	FFP1 preformed mask with valve
<b>Colour</b>	white
<b>Retail unit</b>	15 per box



## uvex silv-Air c

Filtering face masks, protection class FFP2 / N95



3200



3210



3220

### uvex silv-Air 3200

FFP2 / N95 folding mask without valve.

Art. no.	8733.200
Type	FFP2 / N95 folding mask without valve
Colour	white
Retail unit	30 per box

### uvex silv-Air 3210

FFP2 / N95 folding mask with valve.

Art. no.	8733.210
Type	FFP2 / N95 folding mask with valve
Colour	white
Retail unit	15 per box

### uvex silv-Air 3220

FFP2 / N95 folding mask with valve and carbon layer.

Art. no.	8733.220
Type	FFP2 / N95 folding mask with valve
Colour	silver
Retail unit	15 per box



2200



2210



2220

### uvex silv-Air 2200

FFP2 / N95 preformed mask without valve.

Art. no.	8732.200
Type	FFP2 / N95 preformed mask without valve
Colour	white
Retail unit	20 per box

### uvex silv-Air 2210

FFP2 / N95 preformed mask with valve.

Art. no.	8732.210
Type	FFP2 / N95 preformed mask with valve
Colour	white
Retail unit	15 per box

### uvex silv-Air 2220

FFP2 / N95 preformed mask with valve and carbon layer.

Art. no.	8732.220
Type	FFP2 / N95 preformed mask with valve
Colour	silver
Retail unit	15 per box





uvex silv-Air c  
Filtering face masks, protection class FFP3



3310

**uvex silv-Air 3310**

FFP3 folding mask with valve.

<b>Art. no.</b>	8733.310
<b>Type</b>	FFP3 folding mask with valve
<b>Colour</b>	white
<b>Retail unit</b>	15 per box



2310

**uvex silv-Air 2310**

FFP3 preformed mask with valve.

<b>Art. no.</b>	8732.310
<b>Type</b>	FFP3 preformed mask with valve
<b>Colour</b>	white
<b>Retail unit</b>	15 per box



2312

**uvex silv-Air 2312**

FFP3 preformed mask with valve, ergonomically adapted for smaller faces.

<b>Art. no.</b>	8732.312
<b>Type</b>	FFP3 preformed mask with valve
<b>Colour</b>	white
<b>Retail unit</b>	15 per box



## uvex silv-Air Overview

Art. no.	Name	Type		Colour	Retail unit	Quantity in outer box	Page
8732.100	uvex silv-Air 2100	FFP1 preformed mask without valve		white	20 per box	240	103
8732.110	uvex silv-Air 2110	FFP1 preformed mask with valve		white	15 per box	180	103
8732.200	uvex silv-Air 2200	FFP2 / N95 preformed mask without valve		white	20 per box	240	104
8732.210	uvex silv-Air 2210	FFP2 / N95 preformed mask with valve		white	15 per box	180	104
8732.220	uvex silv-Air 2220 with carbon	FFP2 / N95 preformed mask with valve		silver	20 per box	180	104
8732.310	uvex silv-Air 2310	FFP3 preformed mask with valve		white	15 per box	180	105
8732.312	uvex silv-Air 2312	FFP3 preformed mask with valve		white	15 per box	180	105
8733.100	uvex silv-Air 3100	FFP1 folding mask without valve		white	30 per box	360	103
8733.110	uvex silv-Air 3110	FFP1 folding mask with valve		white	15 per box	180	103
8733.200	uvex silv-Air 3200	FFP2 / N95 folding mask without valve		white	30 per box	360	104
8733.210	uvex silv-Air 3210	FFP2 / N95 folding mask with valve		white	15 per box	180	104
8733.220	uvex silv-Air 3220 with carbon	FFP2 / N95 folding mask with valve		silver	15 per box	180	104
8733.310	uvex silv-Air 3310	FFP3 folding mask with valve		white	15 per box	180	105