



Safety Footwear

## uvex climazone

### Innovative climate management

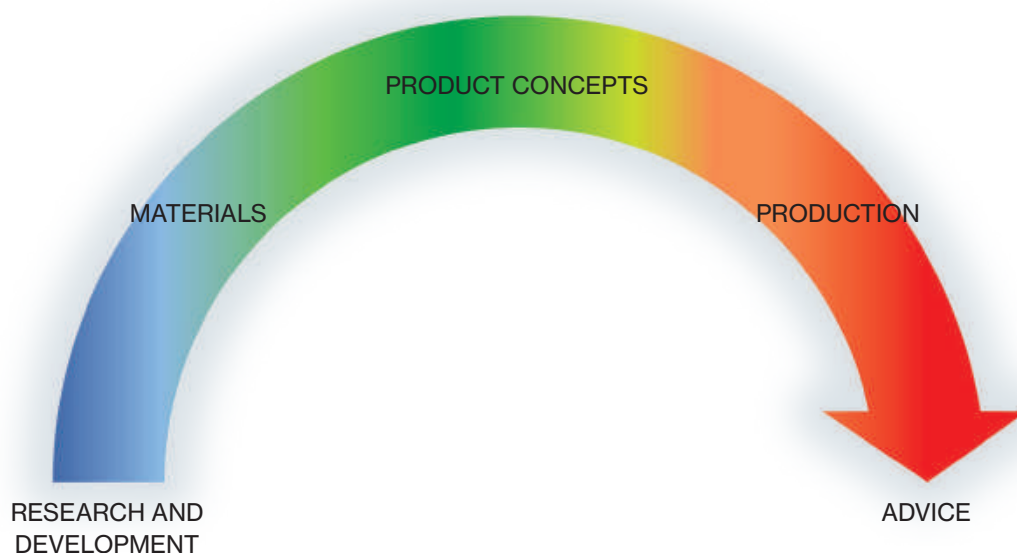
To effectively improve the climate in occupational safety equipment, it is essential to analyse relevant factors to investigate and understand how they work together.

uvex has been researching the impact of climate issues for many years. In collaboration with well-known institutes such as PFI (Pirmasens Testing and Research Institute), the Kaiserslautern Technical College and the Hohenstein Institute, testing methods and devices have been developed to enable a comprehensive and proven measurement of climate characteristics.

Are your feet too hot or too cold? Is excess perspiration making you feel unwell? Effective temperature control is particularly important in the field of safety footwear.

The comfort factor with uvex climazone:

- Regulates individual body temperature
- Work with a lasting sense of well-being
- Longer-lasting performance
- Optimum wearer comfort in any situation



Our partners in research and technology



Fachhochschule  
Kaiserslautern  
University of  
Applied Sciences



uvex climazone is the innovative head-to-toe climate-control system. uvex has combined its expertise in research and development with the use of intelligent materials and processing technology to create a unique range of climate-optimising products.

**climazone**

All products which have the innovative climate management features carry the uvex climazone symbol throughout this catalogue.



During intense physical activity, sweat production by the feet can fill a glass of water by the end of the day. uvex climazone wicks this moisture away reducing the risk of discomfort caused by blisters, fungal infections or even mild hypothermia and damage the footwear or socks.

## The boa® fit system.

Delivering fit solutions purpose-built for performance, the Boa® Fit System is featured in products across industries (in medical, sports and workwear) and consists of three integral parts: a micro-adjustable dial, a super-strong lightweight lace and low friction lace guides. Each unique configuration is engineered for effortless precision delivering a connected, fast, customized and durable fit, and is backed by The Boa Guarantee.

**Dial** A dial that adjusts fit with precision click by click.

**Lace** Lightweight, super-strong lace, expertly configured for comfort and performance.

**Guides** Low-friction guides to ensure a smooth closure, every time.

## The boa® benefits.

### Fit to perform.

Dial in your perfect fit for custom comfort that's consistent all-day, the micro-adjustable Boa Fit System is fast, easy and built to perform, so you can always get the job done.

### Confidence in all conditions.

Designed to reduce contamination by shedding ice, dirt, oil and other elements, the Boa Fit System will work as hard as you do, so you can stay focused and confident in any environment – without ever having to remove your gloves.

### Stay secure and focused.

Boa's precision engineered laces are contained inside the system, out of your way and out of machinery.

### Built for life.

When we say tough, we mean it. Engineered with ultra-durable materials, the Boa Fit System is extensively tested in the harshest conditions.

## Fit for life with boa®.

The Boa® Fit System dials and laces are guaranteed for the lifetime of the product on which they are integrated.

## How it works.



push in to engage



turn to tighten



pull up for quick release

Website



# uvex i-gonomics

## Foot protection with measurably greater relief

uvex i-gonomics redefines wearer comfort: The innovative product system boasts an ergonomic fit, lightweight design and ideal climate characteristics. This makes our safety shoes more comfortable to wear and gives them optimal flexibility – so maximum performance can be achieved at all times, even under extreme conditions.



## uvex 1 G2

### The new uvex 1 G2 collection is the next generation of the successful uvex 1 series

The uvex i-PUREnrj two-layer outsole is made of a newly developed type of polyurethane. The midsole has an energy absorption of 40.8 joules, i.e. double the standard, while providing energy recovery of around 66% in the heel\* and 59% in the forefoot\*.

The tread of the outsole has been specially adapted to working on industrial floors, is shaped in accordance with the latest findings from biomechanical research and offers maximum slip resistance. All this combined with the proven collar concept ensure a high RI index of 4.03.

\* Test report no: L190714889 CTC Lyon – 22/08/2019





Scan for more information about the uvex i-gonomics product system.

## force 4.2

**Test method:**  
Energy absorption in the heel area

**Test result:**  
Energy absorption = 40.8 J (IV 4.2)

**Reduced strain for more comfortable standing and walking**



## weight 3.0

**Test method:**  
Weighing the shoe

**Test result:**  
Product weight = 510 g (IV 3.0)

**Lightweight fit,  
reduced fatigue**



### Relief index calculation:

The relief index is calculated from the average of the three index values (IV) – force, weight and climate – and ranges from 0 (= poor) to 5 (= optimum).



## clima 4.9

**Test method:**  
Measuring the microclimate in the shoe

**Test result:**  
Absolute humidity = 20.23 g/kg air (IV 4.9)

**Less perspiration,  
drier feel, increased hygiene**



# Safety Footwear

Areas of application: light · medium · heavy



## light

areas of application

'Light' covers all areas of application where work is primarily carried out indoors and there are no significant demands on the physical properties of the outsole. Examples include assembly workplaces, as well as storage and logistics areas.



## medium

areas of application

'Medium' applications usually take place both indoors and outdoors, with the outsole needing to be significantly more robust. Typical users include manual labourers, public sector employers and people working the chemical industry.



## heavy

areas of application

'Heavy' applications involve external influences that place extensive demands on the shoe, its durability and stability. They are usually found in heavy mechanical engineering and in the construction industry, especially in building and civil engineering.

# Safety Footwear

## Pictogram overview

### **climazone**

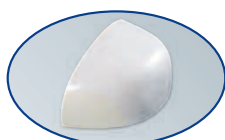
uvex climazone is an innovative head-to-toe climate control system. uvex has combined its expertise in research and product development with the use of intelligent materials and processing technologies to develop a unique range of climate-optimising safety products, such as safety footwear. For more details, see page 216.



ESD indicates the controlled discharge of electrostatic energy that can cause damage to electronic components in the event of uncontrolled discharge or trigger explosions. Safety footwear marked with the ESD symbol meets the ESD specification with a volume resistance of less than 35 megaohms. For a detailed explanation, see page 224.



Certain materials such as silicones, plasticisers and similar substances can impair the lacquer wetting of surfaces. The sole materials of footwear with this symbol has been tested accordingly by the automotive industry and approved.



#### **uvex xenova® system**

The uvex xenova® system is a comprehensive, completely metal-free safety system to protect the foot inside safety footwear.

Latest generation of uvex xenova® toe cap: the metal-free cap fits perfectly without pressure points. This delivers increased wearer comfort while kneeling and banging against obstacles.

uvex xenova® penetration-resistant midsole: the metal-free flexible, penetration-resistant xenova® midsole exactly matches the dimensions of the insole. It covers 100% of the sole area and protects against cold getting inside, which adds to wearing comfort.



#### **uvex medicare**

uvex medicare designates safety footwear that has been certified for orthopaedic adjustment and orthopaedic shoes in accordance with German Institute for Occupational Health and Safety (DGUV) regulation 112-191 and/or Austrian ÖNORM Z 1259.



#### **uvex construction**

Especially suited to applications in the construction industry

### **BOA®**

Delivering fit solutions purpose-built for performance, the Boa® Fit System is featured in products across sports, occupational safety and medical applications. For a detailed explanation, see page 217.



#### **uvex women's and men's last**

To ensure a proper fit for both men and women the last should vary according to the intended gender. Safety footwear marked with these symbols have been produced in sizes 35-40 using a last which mimics the contours of the female foot.



# Safety Footwear

## Standards · Labels

### Labelling

Manufacturer's identification mark	uvex	CE	CE symbol
Manufacturer's type designation	91 8543.8 42		Size
Number of European standard	EN ISO 20345:2011	07/2019	Date of manufacture
Symbol for protection	S1 SRC		Article number
	Made/Produziert in Italy for/für UVEX ARBEITSSCHUTZ GMBH Würzburger Str. 181–189 D-90766 Fürth, Germany		Postal address of the manufacturer

### Footwear symbols for industrial usage

Basic requirements/additional requirements/categories e.g. for leather shoes	Safety footwear EN ISO 20345	Occupational footwear EN ISO 20347
Basic requirements for shoes and impact resistance of toecaps	SB 200 Joule	OB No requirement
Additional requirements: Closed seat region Antistatic properties Energy absorption of seat region Fuel resistance	S1	O1 (without resistance to fuels)
Additional requirements: as above, plus water penetration and absorption	S2	O2
Additional requirements: as above, plus Penetration resistance* Cleated outsole	S3	O3
<b>Basic requirements/additional requirements/categories e.g. for shoes made from PVC or PU</b>		
Basic requirements for shoes and impact resistance of toecaps	SB 200 Joule	OB No requirement
Additional requirements: Antistatic properties Energy absorption of seat region Fuel resistance Penetration resistance* Cleated outsole	S5	O5
The choice of a particular shoe depends on the type of occupational risk. As with all footwear, additional requirements may exist (e.g. in terms of heat and cold insulation, penetration resistance or electrical resistance via ESD). These shoes are then marked accordingly. The testing principles for all basic and additional requirements are specified in EN ISO 20344.		

One of the three following requirements must be met and labelled in the shoe.			
Label	Characteristics tested	Test conditions	Friction coefficient
SRA	Slip resistance on ceramic tile floors with sodium lauryl sulfate solution (SLS)	Forward slip of the heel Forward slip on a flat surface	No less than 0.28 No less than 0.32
SRB	Slip resistance on steel floors with glycerol	Forward slip of the heel Forward slip on a flat surface	No less than 0.13 No less than 0.18
SRC	Slip resistance on ceramic tile floors with sodium lauryl sulfate solution and on steel floors with glycerol	Includes all test conditions cited under a. and b.	



# Safety Footwear

Standards · Labels

## Additional requirements for special applications with corresponding symbols

SYMBOL	RISK COVERED	EN ISO 20345					EN ISO 20347			
		SB	S1	S2	S3	S5	OB	O1	O2	O3
–	Basic									
P	Penetration resistance*									
A	Antistatic footwear									
E	Energy absorption around heel									
HI	Heat insulation									
CI	Cold insulation									
WRU	Water resistance of upper									
HRO	Heat resistance of outsole (+300 °C/min)									
WR	Whole shoe waterproof									
M	Metatarsal protection									
FO	Resistance to oil and petrol									

Meets the specified requirement

Requirement can be met but is not stipulated

### \* Penetration resistance

Warning – Please note that the penetration resistance of this footwear has been measured in the laboratory using a truncated nail of diameter 4.5 mm and a force of 1100 N. Higher forces or nails of smaller diameter will increase the risk of penetration occurring. In such circumstances alternative preventative measures should be considered.

Two generic types of penetration resistant insert are currently available in PPE footwear. These are metal types and those from non-metal materials. Both types meet the minimum requirements for penetration resistance of the standard marked on this footwear but each has different additional advantages or disadvantages including the following:

**Metal:** Is less affected by the shape of the sharp object/hazard (i.e. diameter, geometry, sharpness) but due to shoemaking limitations does not cover the entire lower area of the shoe.

**Non-metal:** May be lighter, more flexible and provide greater coverage area when compared with metal but the penetration resistance may vary more depending on the shape of the sharp object/hazard (i.e. diameter, geometry, sharpness).

For more information about the type of penetration resistant insert provided in your footwear please contact the manufacturer or supplier detailed on these instructions.



# Safety Footwear

## ESD

### Electrostatic

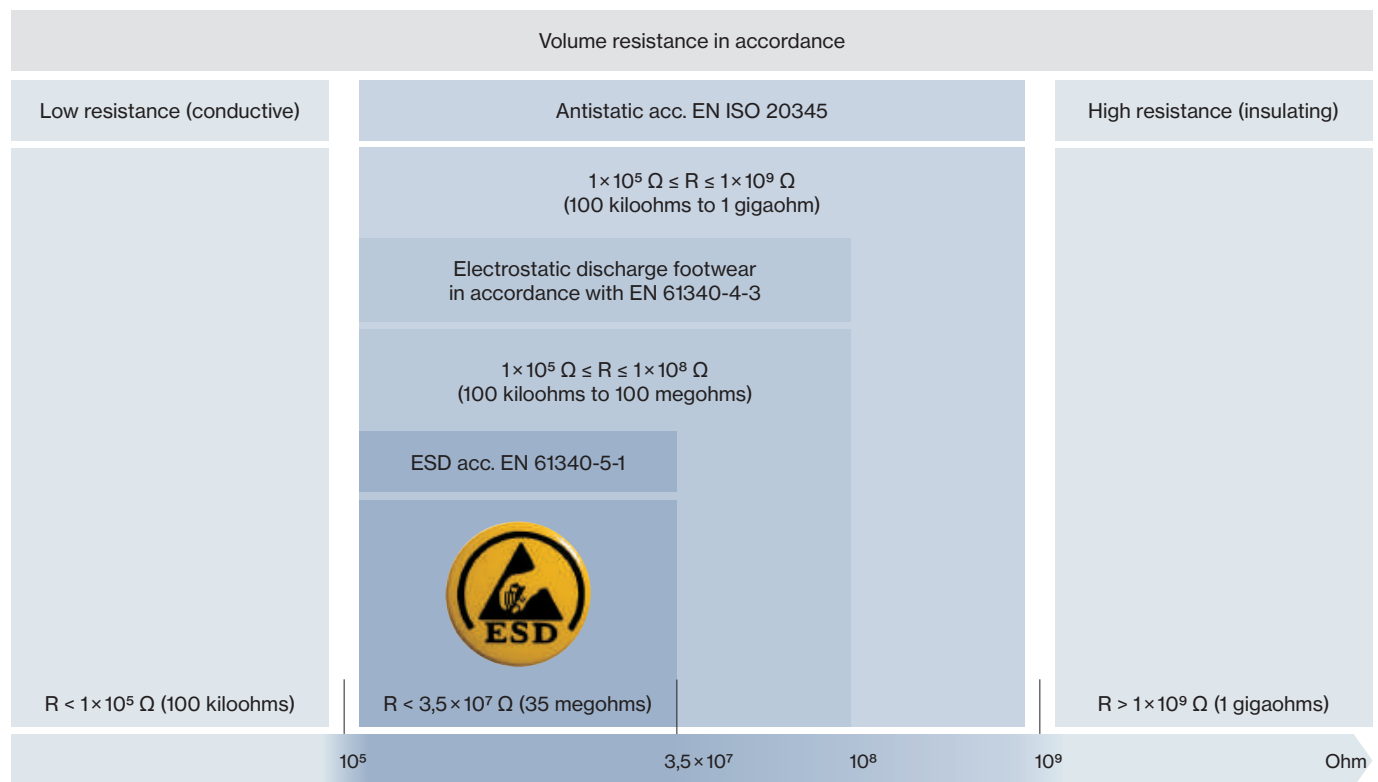
Controlling unwelcome electrostatic charge is becoming an increasingly important role in industry, as more and more employees come into contact with processes, materials or objects which are sensitive to electro static charge. It is often necessary to use safety footwear as part of a system to conduct electrostatic charge in such workplaces.

Independent of various measuring methods, volume resistance between 100 kilohms ( $1.0 \times 10^5$  ohms) and 35 megohms ( $3.5 \times 10^7$  ohms) is still required to fulfil the various relevant norms (e. g. EN ISO 20345, EN 61340).

All ESD-certified products in this catalogue feature the ESD symbol.



These products are also suitable in accordance with the specification for conductive footwear in the German Technical Rules for Hazardous Substances (TRGS) 727 "Avoiding risks of ignition resulting from electrostatic charges."



R = electrical resistance

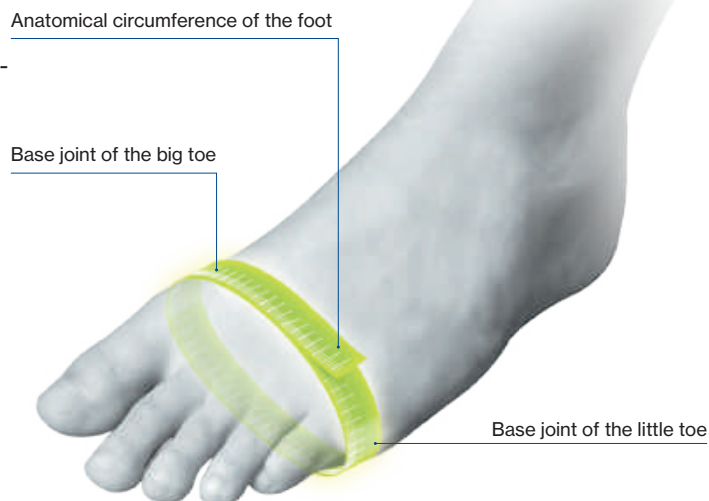
# Safety Footwear

## uvex multiple fit system

### uvex multiple fit system

As part of the safety footwear multiple fit system, a footwear style is offered in the same size but in a range of different fits. The different fits are based on the measurement of the widest part of the foot. A measurement can be taken of either the circumference of the foot at the base joint of the big toe and the base joint of the little toe or alternatively the width of the foot at this point (see opposite).

The classification of sizes and the corresponding values are detailed in the table below (all measurements in mm):



uvex shoe size	Foot length	Width 10 Circum.	Width 11 (standard) Circum.	Width 12 Circum.	Width 14 Circum.
35	217	216.5	222.5	228.5	240.5
36	225	221	227	233	245
37	232	225.5	231.5	237.5	249.5
38	240	230	236	242	254
39	247	234.5	240.5	246.5	258.5
40	255	239	245	251	263
41	262	243.5	249.5	255.5	267.5
42	270	248	254	260	272
43	277	252.5	258.5	264.5	276.5
44	285	257	263	269	281
45	292	261.5	267.5	273.5	285.5
46	300	266	272	278	290
47	307	270.5	276.5	282.5	294.5
48	315	275	281	287	299
49	322	279.5	285.5	291.5	303.5
50	330	284	290	296	308
51	337	288.5	294.5	300.5	312.5
52	345	293	299	305	317

All measurements in mm.

The required width can be determined from the table according to the wearer's foot length. The following table shows the corresponding uvex article number for the different widths:

► For any questions or queries, please contact uvex customer service at [safety@uvex.de](mailto:safety@uvex.de).

uvex article number	Width	Certification	Size range
XXXX.1	10	EN ISO 20345: 2011 S1 P or S3	depending on model
XXXX.2	11 (standard)		
XXXX.3	12		
XXXX.4	14		
XXXX.7	10	EN ISO 20345: 2011 S1 or S2	
XXXX.8	11 (standard)		
XXXX.9	12		
XXXX.0	14		



### uvex size advisor app

When choosing safety shoes, it is especially important to choose the right size in order to benefit fully from their protective function. In addition, only a perfect fit ensures lasting wearer comfort. However, size specifications may vary depending on the manufacturer. With the uvex size advisor app you can determine the right uvex shoe size and width to ensure the perfect fit and most comfortable shoe for your working day.





uvex



Video





## Winners at work – uvex 1 sport



# Designed for Individuals

Website



### Sporty look.

Sporty design meets sophisticated functionality: The uvex 1 sport is both youthful and stylish combined with first-class wearer comfort, thanks to its lightweight design, climate optimised high-tech materials and ergonomically shaped outsole.

uvex 1 sport – the ideal companion for daily working life and more.

### High breathability.

The breathable mesh upper ensures optimised climate control. The sporty look of the uvex 1 sport is contributing to the increased acceptance of wearing safety footwear.

### Lightweight and ergonomic design.

#### uvex 1 sport sole

- ergonomically designed outsole comprising dual-density polyurethane for light applications
- extremely comfortable underfoot
- suitable for general use on almost all surfaces
- excellent anti-slip properties (SRC)
- abrasion-resistant
- meets the ESD specification with volume resistance < 35 megaohms
- free of paint wetting impairment substances

Please visit our website for our complete range of uvex footwear  
<https://www.uvex-safety.com.sg/en/products/safety-shoes/>

uvex 1 – redefining performance

# Next Level Equipment



## Outstanding flexibility. Optimum wearer comfort.

The ergonomic design of the outsole supports the natural movement and flexibility of the feet.

High abrasion-resistant TPU sections ensure secure stepping and rolling of the foot, which helps prevent accidents.

Ideal shape around the joints for optimal torsion and good flexibility.

Self-cleaning tread optimised for slip resistance (SRC marking).



Jointed insert for securely climbing ladders.

Pivot point reduces pressure on joints when twisting and turning.



## Lightweight construction. Reduced fatigue.

Omit but don't miss out. A lower weight reduces strain on the body and reduces the risk of injury and wear. This is evident in the low weight design principle of the uvex 1 safety shoes. As the lightest uvex shoe in its class, the uvex 1 is approximately 100g lighter than uvex's bestseller the uvex motion style.



## 100% more shock absorption. Comfort in 3 dimensions.

The uvex 1 multilayer shock absorption system comprising a double-layered uvex 1 PU outsole and comfort insole with optimum shock absorption in the heel and the front of the foot helps protect the musculoskeletal system. The energy absorption in the heel is twice that required by EN ISO 20345. Pure walking comfort.



## Outstanding stability. Reliable support and safety.

Consistent stability is essential for secure, sure-footedness and accident-free working. The visible external heel basket which is integrated into the sole ensures stability and offers additional side impact protection. The 'x-tended' support model offers additional sideways support and enhanced protection against ankle twisting and impact. Both sole versions securely enclose the foot, without limiting flexibility.



## uvex monoskin shaft design. Pressure-free, comfortable fit.

The completely metal-free uvex monoskin upper shaft made from high-tech microfibre ensures outstanding wearer comfort without pressure points and the virtually seamless construction offers extended product life.



The uvex 1 safety footwear supports the natural movement of the whole body, reducing pressure and strain while maximising comfort. Continuous product development is carried out on the basis of the latest physiological research and technology, ensuring maximum performance with quantifiable benefits.

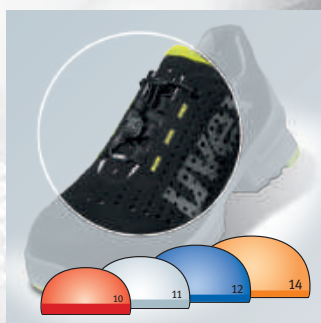


100% metal-free



Orthopaedic solutions  
according to German  
DGUV 112-191 and Austrian  
ÖNORM Z1259

**climazone**



#### Anatomically designed for optimum comfort and fit.

- flexible multiple width system for reliable support and comfort
- the flexible uvex multiple width system with widths 10-14\*\* provides optimum fit
- individually adjustable quick-lace system (IAS)\*\*
- anatomically designed toe cap for total safety
- use of a specially designed women's last for the uvex 1 models in sizes 35 to 40



#### uvex climazone standard. Temperature and climate control.

Large perforations, ultra-breathable high-tech-micro velour upper and distance mesh lining material together with a comfortable insole with moisture control system prevents the build-up of heat and reduces sweat.

\* Formerly known as German BGR 191 \*\* only for specific models

Please visit our website for our complete range of uvex footwear  
<https://www.uvex-safety.com.sg/en/products/safety-shoes/>



## uvex 1 business – the best of both worlds

### Perfect for the office as well as the workshop.

Do you need to head straight from the meeting room to the production line? uvex's new line of safety shoes brings together three classic looks from the fashion world – Derby shoes, desert boots and Chelsea boots. uvex 1 business safety shoes can go wherever you go, managing to be stylish and safe at the same time! Their attractive appearance blends seamlessly with smart business and casual attire, while their steel cap provides maximum protection with plenty of toe room. Their first-class wearer comfort never fails to impress, from morning to night.

#### High wearer acceptance

This ultra-lightweight range of safety footwear in a modern business look is available in S2 and S3 versions, in stylish blue or grey.



#### Proven safety

The extra-wide steel cap, metal-free, penetration-resistant insert and non-slip outsole, which exceeds the requirements of the standard for shock absorption by almost 100%, provide optimum protection.



#### Breathable materials

The highly breathable, chrome-free materials and antistatic comfortable insole ensure a pleasant foot climate, even during prolonged periods of use.



#### Comfortable fit

The innovative microvelour material with soft padding and insole with additional shock absorption around the heel and forefoot guarantee a pressure-free fit.



Orthopaedic solutions in accordance with German DGUV 112-191\* and Austrian ONORM Z1259

**climazone**



You can find more information at [www.uvex-safety.com/uvex1business](http://www.uvex-safety.com/uvex1business)

\* formerly BGR 191



# Highstreet Fashion meets Safety



Please visit our website for our complete range of uvex footwear  
<https://www.uvex-safety.com.sg/en/products/safety-shoes/>



# Pushing the Limits!



## Superior performance across all disciplines

The innovative uvex 2 safety footwear range in protection classes S3, S2 and S1 P is up for the challenge: delivering optimum shock absorption, ergonomic fit, low weight and excellent climate characteristics, ensuring maximum performance and redefining the limits for safety footwear.

### Energy-Saving and Lightweight.

Helps prevent fatigue.

### Shock Absorption System for Professionals.

Relieve strain with every step.

### Reliable stability.

With maximum freedom of movement.

### Pressure-free, comfortable fit.

Thanks to uvex monoskin shaft design.

### Anatomically designed for optimum comfort and fit.

### Comfortable underfoot with climate control.

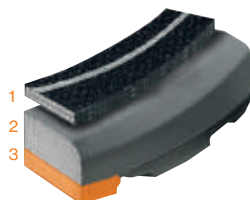
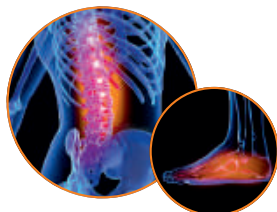
Highly breathable thanks to uvex climazone.

## 100% better than the standard

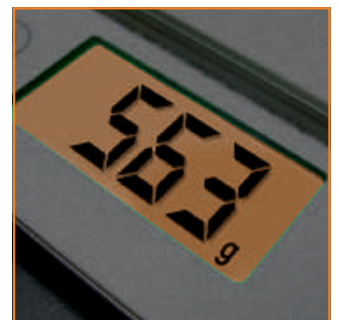
With up to 40 joules of energy absorption in the heel area, the uvex 2 reduces strain on the body.

In spite of the penetration-resistant midsole (S3, S1 P) the energy absorption in the heel is approximately twice that required by EN ISO 20345.

The uvex 2 multilayer shock absorption system and antistatic comfort insole with additional shock absorption elements at the heel and forefoot, help protect the musculoskeletal system on hard or rough terrain.



- 1 Comfort insole
- 2 PU midsole
- 3 PU or rubber outsole



## Ultra lightweight

The uvex 2 range is one of the lightest S3, S2 and S1 P safety footwear ranges for robust applications in its field.<sup>1</sup>



Website



Video



Please visit our website for our complete range of uvex footwear  
<https://www.uvex-safety.com.sg/en/products/safety-shoes/>



#### Highly flexible

Enjoy unlimited freedom of movement, especially when kneeling, thanks to the flexible penetration resistant, metal-free midsole. The uvex no tie quick-lace system allows laces to be adjusted easily and adapt throughout the day keeping feet comfortable<sup>2</sup>.



#### Excellent stability

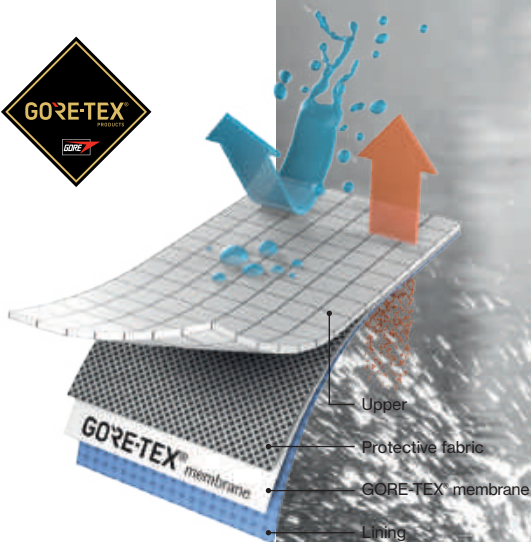
The directly moulded PU scuffcap reliably protects the upper and prevents wear and tear when kneeling. The externally visible heel basket system integrated into the sole ensures sure-footedness and additional ankle protection without impairing comfort.



uvex

uvex 2

GTX VIBRAM® 100% waterproof. 100% comfortable.

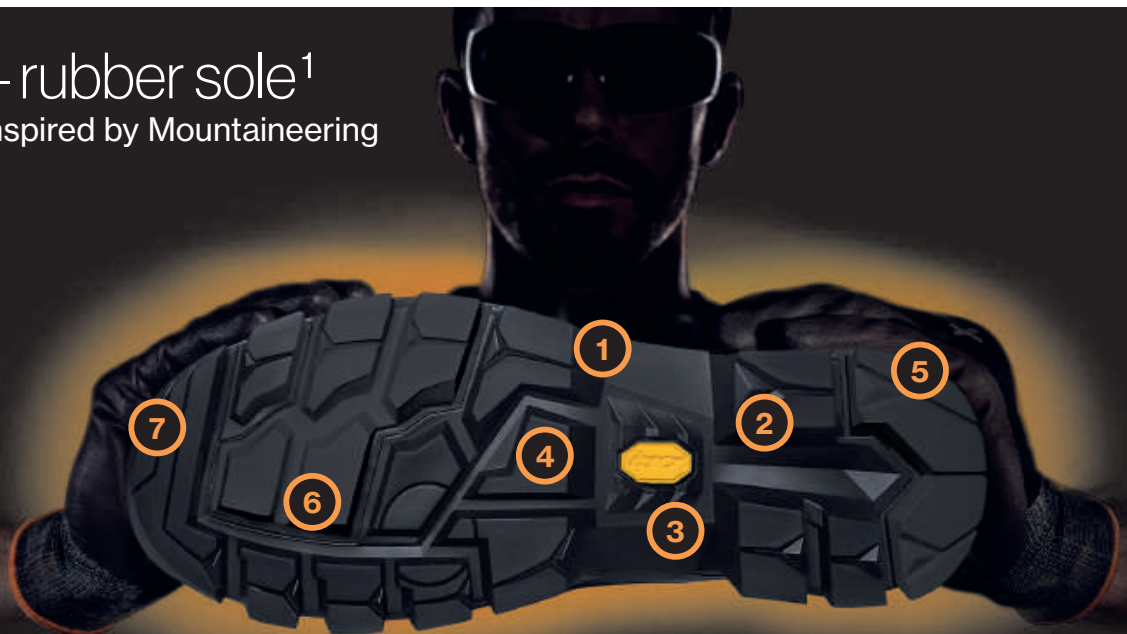


**GORE-TEX® Extended Comfort Footwear<sup>2</sup>**

- permanently waterproof and highly breathable
- maximum heat dissipation
- dry and comfortable at high temperatures and during tasks requiring high levels of physical exertion



uvex 2 – rubber sole<sup>1</sup>  
VIBRAM® – Inspired by Mountaineering



The rubber compound developed exclusively for uvex is optimised for moderately difficult applications with demanding ground conditions and integrates additional features in addition to the basic characteristics of the uvex 2 PU/PU sole:

- ① as light as a PU sole
- ② heat-resistant outsole for short periods up to +300 °C (HRO label)
- ③ increased cut resistance
- ④ heat-insulating (HI label, tested at +150 °C)
- ⑤ increased low-temperature flexibility and slip resistance
- ⑥ improved chemical resistance compared to PU soles
- ⑦ orthopaedic adjustments in accordance with German DGUV regulation 112-191 and Austrian ÖNORM Z1259 possible



## uvex 2 PU/PU Sole

Optimum Grip with every Step



Walk and stand safely. Outdoor sole with excellent grip properties and optimum shock absorption

- |  |  |
|--|--|
| <b>1</b> Effective ankle protection to ensure safety when working on ladders.  | <b>5</b> Abrasion-resistant TPU sections for secure foot placement to help prevent accidents.                                |
| <b>2</b> Resistant to oil and petrol. Resistant to temperatures for short periods up to +120 °C.                     | <b>6</b> Rugged, self-cleaning sole ensures maximum grip for demanding applications, uneven or dirty floors (SRC labelling). |
| <b>3</b> Orthopaedic adjustments in accordance with German DGUV regulation 112-191 and Austrian ÖNORM Z1259 possible | <b>7</b> Meets ESD requirements: bleed resistance < 35 megaohm.  |
| <b>4</b> Free from harmful substances that interfere with wetting agents.  | <b>8</b> Slip resistance (SRC)   |



## uvex 2 trend – safety and comfort redefined

Add a splash of colour to your day.

Whether in the assembly hall or on the production line, indoors or outdoors:

uvex 2 trend safety footwear range is suitable for medium applications (S1-S3) and incorporates numerous proven technologies at an affordable price. The uvex anti-twist heel cap for increased stability to prevent ankle twisting and the high-quality outsole materials combined with a sporty look and bold colours make this footwear appealing to wear. The result: maximum comfort and reliable safety.





# Affordable Quality and Comfort

## Sporty design

Contemporary colours and a long, flexible lacing area give the uvex 2 trend range a sporty look and a high degree of wearer acceptance.

## Greater visibility

Reflective elements provide greater visibility – and therefore safety – even in poor light conditions.

## Pleasant foot climate

The breathable, chrome-free microvelour material ensures a pleasant foot climate at all times, even during prolonged periods of use.

*climazone*



Orthopaedic solutions in accordance with German DGUV 112-191\* and Austrian ONORM Z1259



You can find more information at [www.uvex-safety.com/uvex2trend](http://www.uvex-safety.com/uvex2trend)



## First-class wearer comfort

The midsole follows the lines of the arch, making the safety shoes especially comfortable to wear.



## Safe slip resistance

The ergonomic design of the outsole supports the natural rolling motion of the foot. The new outsole profiles offer the best grip on almost any surface.



## Sturdy scuffcap \*\*

The directly moulded PU scuffcap on the S3 version reliably protects the upper against wear, especially during tasks that require kneeling.



## Reliable protection against twisting

The innovative uvex anti-twist heel cap gives the foot extra support to avoid painful twisting.

\* formerly BGR 191 \*\* on selected models

uvex 2 xenova® – robust variety

# Trend-setting all-rounder



## Indoor and outdoor use

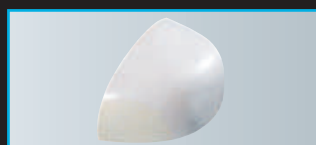
uvex 2 xenova® safety shoe series – exceptional, robust and comfortable shoes, whatever you're doing. Whether indoors or outdoors, the uvex 2 xenova® are the right choice for applications such as mechanical and plant engineering, metal processing, energy (generation, supply &

grid operation), municipal operations, motorway maintenance, railways, transport & logistics, airports, trades, ancillary construction work, horticulture and landscaping. uvex 2 xenova® – the trend-setting allrounders for a wide range of applications.

## Metal-free safety

The uvex xenova® system offers high levels of safety thanks to its metal-free toe cap and optional metal-free, penetration-resistant

flexible midsole that keeps out the cold, and is lightweight and flexible for lasting wearer comfort.



Please visit our website for our complete range of uvex footwear  
<https://www.uvex-safety.com.sg/en/products/safety-shoes/>



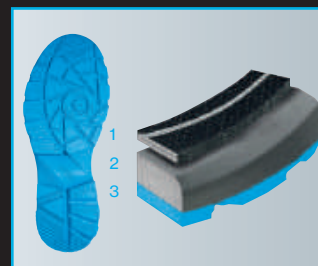
You can find more information at  
[www.uvex-safety.com/uvex2xenova](http://www.uvex-safety.com/uvex2xenova)



uvex climazone standard  
The ultra-breathable high-tech microvelour upper material, distance mesh lining and comfortable insole with moisture transport system prevent the build-up of heat and reduce uncomfortable sweating.



Excellent fit due to newly developed last and uvex multiple fit system – available in 3 widths.



Lightweight and robust uvex dual density polyurethane sole with excellent slip resistance (SRC) and multi-layer shock absorption.

## Impressively diverse

Made from high-quality black micro velour or smooth leather, the uvex 2 xenova® series offers an impressively wide variety of styles in accent colours blue, green and red in protection classes S1, S1 P, S2 and S3.





# uvex quatro GTX

Extremely robust.

Even in wet conditions.

Feet remain dry even under extreme conditions:

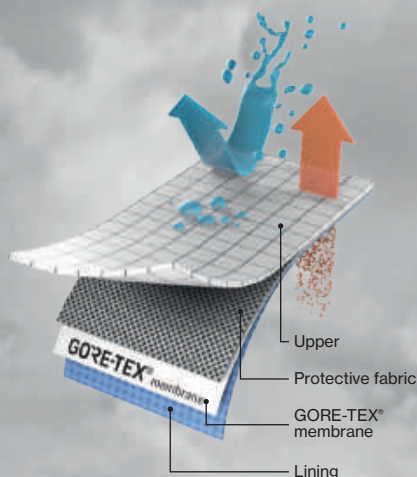
The uvex quatro GTX reliably prevents the penetration of water thanks to its GORE-TEX® membrane, at the same time ensuring a superior foot climate due to the high level of breathability – the perfect combination between protection and wearer comfort.



## GORE-TEX® Extended Comfort Footwear<sup>1</sup>

- permanently waterproof and highly breathable
- maximum heat dissipation

Dry and comfortable at high temperatures.



### uvex quatro GTX sole

- dual component PU / rubber sole for outdoor use
- outstanding comfort underfoot thanks to ultra soft, shock-absorbing midsole and non-slip rubber outsole
- extremely cut-resistant

- temperature-resistance of outsole for brief exposure up to +300°C
- suitable for general use on almost all surfaces and in a very broad temperature range of -20°C for brief exposure up to +300°C
- resistant to most chemicals

- excellent slip resistance even on damp and oily surfaces
- antistatic
- HI, CI, HRO, SRC

Please visit our website for our complete range of uvex footwear  
<https://www.uvex-safety.com.sg/en/products/safety-shoes/>





You can find more information  
at [uvex-academy.com](http://uvex-academy.com)

**This practical seminar will help you to analyse the dangers that employees face, determine what equipment is required to keep them safe and select the most appropriate protective footwear**

- Basic information on the areas of application of PPE footwear
- Information on standards, the differences between primary and secondary requirements and their applications
- Description of the labels found on protective footwear and the meaning of the various codes
- Identification and assessment of dangers, developing a risk analysis strategy and understanding which safety equipment is necessary
- Information on materials, production processes and areas of application including:
  - Upper materials and lining
  - Soles
  - Protective toecaps
  - Penetration-resistant inlay
- Choosing the correct protective footwear for each application

**Target group**

Those responsible for the work-related health and safety of employees, e.g. health and safety officers, specialist purchasers and representatives of employee groups.



For more information or to book a place, please visit [uvex-academy.de](http://uvex-academy.de), call +49 (0)911 9736 1710 or email [academy@uvex.de](mailto:academy@uvex.de)