



**uvex**

# safety footwear

Australia & New Zealand

---

**protecting people**

# uvex

## one brand - one mission

We protect people. At work and at play. On the production line and on the ski slope. While welding or while riding. uvex is one brand with one mission: protecting people.

The uvex brand is based on two established pillars. Combining these two worlds into one brand is greater than the sum of its parts.

The products of the uvex sports group include helmets for winter sports, cycling and horse riding, skiing and sports goggles; as a partner of elite international sport, uvex equips over 1,000 top athletes across the world.

Everything revolves around safety at work in the uvex safety group: We produce personal protective equipment from head to toe – from protective helmets to safety shoes.

Wherever you see the name uvex, you can be sure that you will enjoy the combined expertise and greatest possible experience from the fields to sport and workplace safety.







95  
years





## innovating safety footwear since 1961

Our CAGI factory in Ceva, Italy, has been designing and manufacturing safety footwear to protect people since 1961.

With 60 years experience in safety footwear and 95 years protecting people, uvex is synonymous around the world for setting benchmarks in comfort and safety performance.

Outstanding scientific innovation and design is what sets uvex apart. No matter what industry, our range of exceptional safety footwear helps relieve workers from the stresses and forces they face.

Understanding people and the impact their work place environment can have on them is critical to delivering on the uvex mission of protecting people.

uvex integrates scientific analysis into the research, design and development of award-winning products wherever you work.

uvex founded

uvex products at  
Olympic Games

CAGI factory founded by  
Candela Giulio in Ceva, Italy

uvex brand name launched

uvex launch of  
Gerba safety  
footwear brand

1926

1936

1961

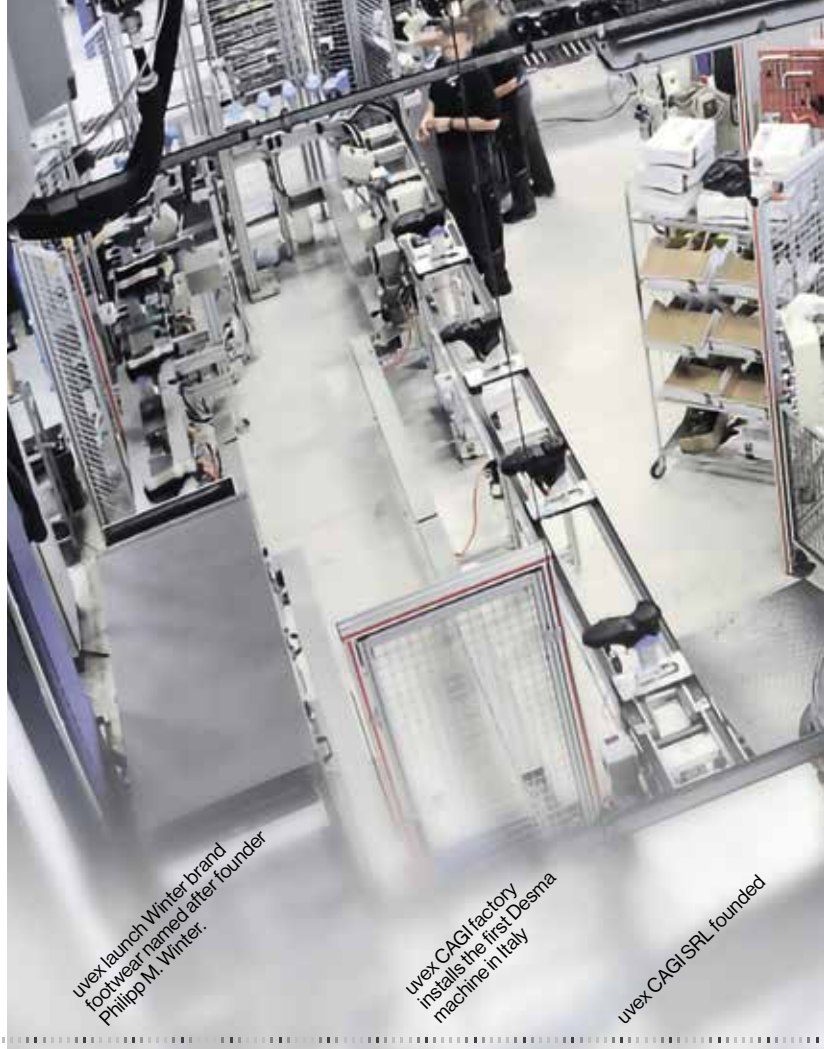
1964

1972

1974

1982

1987



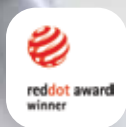
uvex launch Winter brand  
footwear named after founder  
Philipp M. Winter.

uvex CAGI factory  
installs the first Desma  
machine in Italy

uvex CAGI SRL founded



60  
years  
safety footwear



uvex 1 x-tended support  
shoe design wins  
Red Dot Design Award

2013

1 millionth pair of uvex 1  
safety shoe design manufactured

2015



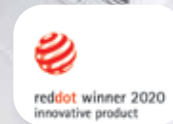
2016 uvex 2 footwear  
range wins  
Plus X Design Award

2016



uvex 1 sport wins  
Red Dot Design Award  
and iF Design Award

2018



uvex 1G2 shoe wins  
Red Dot Innovative Product Award  
and iF Design Award

2020

## uvex x-flow range

### built to exceed expectations.

Developed for Australian and New Zealand workers, uvex applied a comprehensive four-layer research process to understand workers and the unique physical and environmental stresses they face.

uvex **bionom** x design system ensures that the uvex x-flow range is engineered to optimise movement efficiency and reduce fatigue. Integrated systems minimise weight and are designed to improve power generation and force transfer with the aim of improving productivity and well-being.

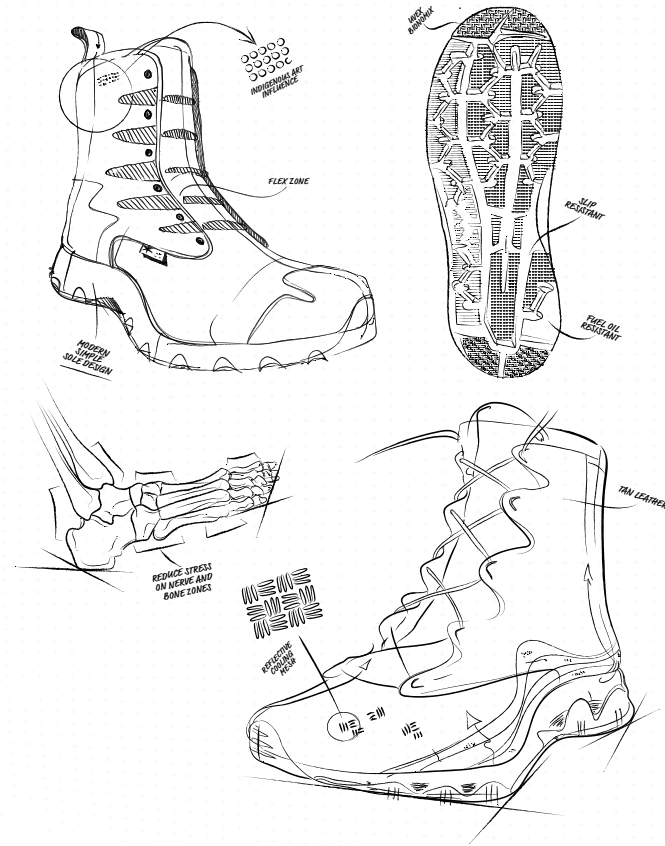
Our **clima** +zone technology maximises breathability and internal airflow by integrating elements in every part of the footwear to help alleviate the effects of heat stress in hot climates.

uvex **bionom** x convex sole geometry and segmented design is optimised for performance on both smooth surfaces and rough terrain.

Electrically non-conductive sole\* and metal free design^ is ideal for workers in construction and industries where accidental contact with electrical hazards may occur.

\*Non-zip versions are metal free. Zip side versions include some metal in the zip slider and magnet closure.

^Important note: In accordance with ASTM F2413 footwear protection should be considered a secondary source of protection from electrical hazards. Electrical hazard protection can deteriorate quickly with wear and when wet.







## safety footwear application areas

### 1 = light

Work is primarily carried out indoors and there are no significant demands on the physical properties of the footwear.

Examples include assembly, warehousing, logistics and light industrial workplaces.



### 2 = medium

Work usually takes place both indoors and outdoors, with the footwear needing to be significantly more robust. Typically users include trades people, public sector employers and medium industry.



### 3 = heavy

Work involves external influences that place extensive demands on the footwear durability and stability. They are usually found in mining, construction, heavy mechanical engineering and civil engineering.



# protecting planet - our responsibility

## uvex is committed to CO2 neutral growth

One of the company's most ambitious targets relates to CO2 emissions — it is aiming to achieve CO2-neutral growth over the next few years. The fact that the uvex safety group has already been able to reduce its CO2 emissions by almost a quarter in the last three years only serves to show that achieving this objective is not just a vision for the future. In some plants, emissions have been reduced significantly further: uvex safety gloves in Lüneburg, Germany, has reduced its CO2 emissions by 63% since 2016. At the plant in Fürth, Germany, emissions from the production of safety spectacles have been reduced by 40% over the same time period.

### uvex Safety Footwear Factory, Ceva, Italy

- certification of the environmental management system in accordance with DIN EN ISO 140001
- PU Waste Offensive — project to promote recycling and cut polyurethane waste (recycling target of 35%)

### uvex Safety Eyewear Factory, Furth , Germany

- construction of a new recycling centre in preparation for the introduction of DIN EN ISO 14001
- installation of a CO2 reducing lighting system
- installation of innovative and resource efficient flood cells for coating spectacle lenses
- certification of the energy management system in accordance with DIN EN ISO 50001

### uvex Safety Gloves, Lüneburg, Germany

- certification of the environmental management system in accordance with DIN EN ISO 140001
- waste management (target of 98% separate collection rate)
- conversion of the shock dryer to gas operation
- certification of the energy management system in accordance with DIN EN ISO 50001



“

For over 90 years, we have been producing and distributing high-quality products to protect people in sports, leisure and at work. Any company wanting to protect people must accept the responsibility that comes with it. It is exactly this mission that instills our commitment to work sustainably and with social responsibility.

”

Michael Winter, Managing Partner of the uvex group

Recycled production waste is granulated and moulded to form **87% of the foam** used in the uvex x-flow footbed.

PET plastic, commonly used in plastic bottles, is recycled to create the footbed top cover fabric.

uvex

RECYCLED  
Plastic 87%  
Foam 87%



# uvex **tuneup** 2.0

## uvex fit + insole advisor

Using advanced scientific algorithms, the uvex fit advisor app uses three calibrated images of the foot to recommend a uvex **tuneup** 2.0 insole specific to your foot type.

The uvex fit advisor app also recommends the correct footwear size and width.

uvex fit advisor app can be used instore, onsite or at home using either a calibration plate, A4 or A3 piece of paper.

instore



at home







PROCESSING RESULTS



footwear advisor

recommendation

shoe size  
41 EU - 7 UK - 8 US  
shoe width  
wide (12)  
insole  
neutral

foot measurements



tuneup high



tuneup neutral



tuneup low



uvex **tuneup 2.0**

comfort support insoles

uvex **bionom** x design based on the anatomical rotational equilibrium of the foot for added comfort and support.

The three insole variations for low, neutral and high arch feet provide support where each foot type needs it.

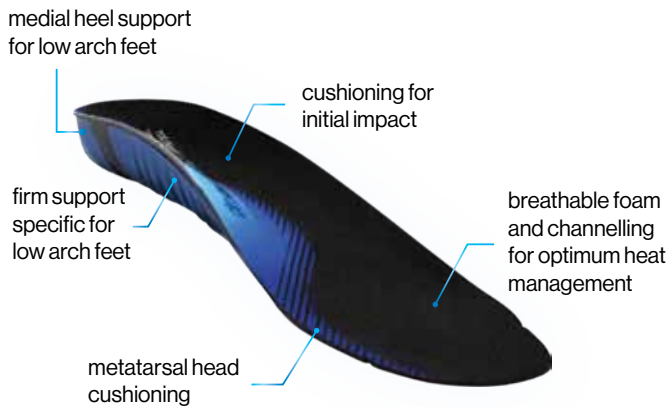
The increased support and redistribution of pressure customises the fit to help improve comfort during a full day at work.

uvex **multiple** fit system allows customisation of width and forefoot cushioning.

Style	low arch	neutral arch	high arch
Colour	blue	yellow	red
Part no.	95271	95272	95273
Sizes EU (UK)	37-48 (4 - 13)	37-48 (4 - 13)	37-48 (4 - 13)
Adjustable widths	standard (11) & extra wide (14)	standard (11) & extra wide (14)	standard (11) & extra wide (14)
Certified footwear	uvex x-flow range	uvex x-flow range	uvex x-flow range

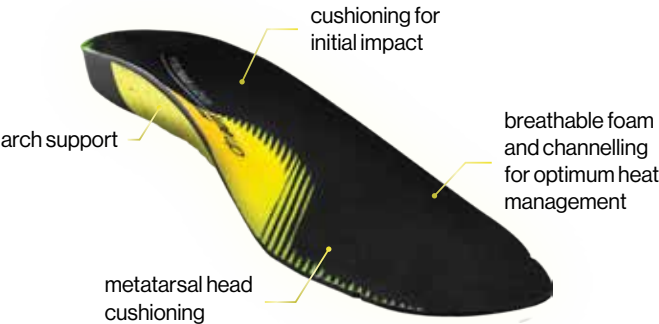
**bionom** x **clima zone** **multiple** fit **anti-bacterial** **hand** washable

**tuneup 2.0 low arch**

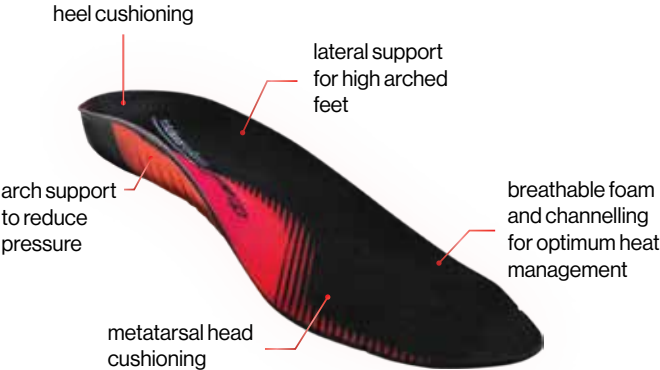




# tuneup 2.0 neutral arch



# tuneup 2.0 high arch



## uvex bionom x

The human foot with 33 joints is a dynamic structure that is constantly changing shape and function throughout the walking cycle to provide a stable and efficient platform.

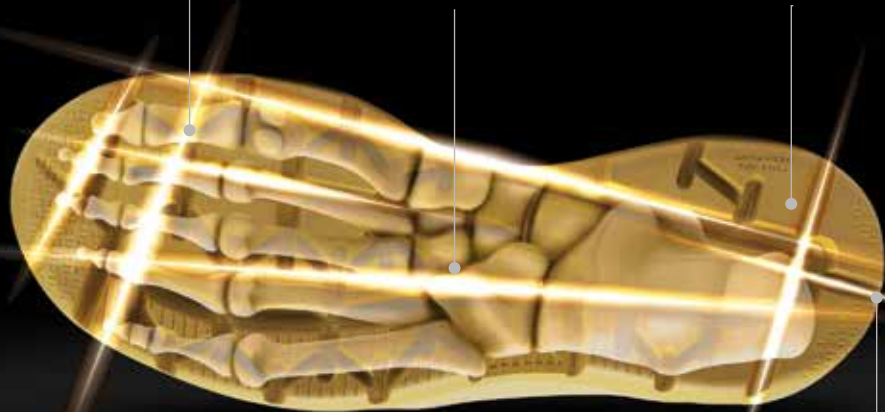
The entire footwear system needs to be designed in symphony with the foot-upper-sole-ground interaction to optimise comfort and minimise worker fatigue.

Using biomechanics, uvex has defined a unique approach to safety footwear design. Reflected in the common design lines that optimise the foot-upper-sole-ground interaction and provide extraordinary performance and comfort across applications.

**toe-off articulation**  
final power transfer

**forefoot adaption articulation**  
smooth transition to foot flat and  
adaption to sloping surfaces

**rearfoot decoupling**  
flowing transition to midfoot  
loading and stability on  
declining surfaces



**medial decoupling**  
smooth progression from  
initial contact and stability  
on irregular surfaces

Compression  
zone alleviates  
pressure

Expands with  
each foot step

Reduces pressure on  
nerve and bone zones

flex points to move  
with the foot





# uvex

## uvex **clima** zone

Footwear design can be a major contributor to heat stress at work. uvex **clima** zone is an innovative climate control system that has been developed to optimise breathability and internal airflow within the footwear to help keep workers cool.

uvex scientific research and development processes ensures the climate-optimising uvex **clima** zone range of safety footwear helps draw moisture away from the feet to create a pleasant and comfortable environment within the footwear.



uvex **clima** zone

Designed to help draw moisture  
and heat away

# uvex i-**PURE**nrj

Designed to minimise workers fatigue uvex i-**PURE**nrj cushioning system absorbs impact energy during loading and maximises energy return during propulsion. The uniquely engineered uvex i-**PURE**nrj provides exceptional comfort, stability and performance for workers through each phase of the walking cycle and during prolonged standing.

The exceptional levels of energy absorption within uvex i-**PURE**nrj cushioning system during loading help reduce muscular work typically required to dampen impact energy and by retuning this energy in a spring like manner during push off uvex i-**PURE**nrj helps reduce muscle work and the wearers level of perceived fatigue by 21%.

125%

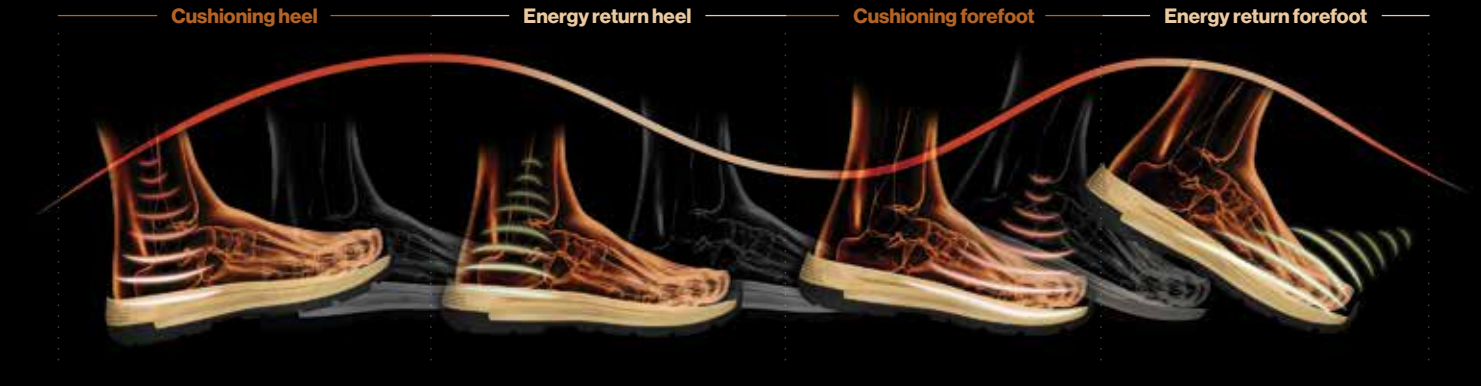
more energy absorbed than required by EN ISO 20345:2011 standard

60%

energy return

21%

less perceived fatigue compared to conventional polyurethane soles.







uvex 3 x-flow zip

uvex 3 x-flow zip is designed to move with the foot and heat away from the body.

Suitable for workers in medium to heavy application areas and particularly workers that may be exposed to electrical hazards.

Unique sole engineering helps provide stability on both smooth and uneven surfaces.



Colour	tan	black & tan
Part no (standard)	65458	65428
Sizes EU (UK)	37 - 48 (4 - 13)	39 - 48 (6 - 13)
Part no (extra wide)	65450	65420
Extra wide sizes EU (UK)	41 - 45 (7 - 10.5)	41 - 45 (7 - 10.5)
Height	150mm	
Weight	740g	

bionom x i-PUREnrj clima zone multiple fit





uvex

uvex 3 x-flow

The full leather upper and heat resistant sole makes uvex 3 x-flow ideal for workers in heavy application areas that may be exposed to hot material.

Electrical insulating sole and metal free design make it well suited to workers in construction and other industries that could have accidental contact with electricity.

The sole is engineered to perform on smooth and rough surfaces alike.



Colour	tan	black
Part no (standard)	65418	65408
Sizes EU (UK)	39 - 48 (6 - 13)	37 - 48 (4 - 13)
Part no (extra wide)	65410	65400
Extra wide sizes EU (UK)	41 - 45 (7 - 10.5)	41 - 45 (7 - 10.5)
Height	150mm	
Weight	718g	

bionom x i-PUREnrj clima zone multiple fit







uvex 2 x-flow zip

Lightweight construction that optimises movement efficiency and stability.

The low height and easy access makes uvex 2 x-flow zip ideal for workers in medium application areas that require maximum ankle flexibility without sacrificing support.

Electrical insulating sole makes it ideal for electricians and other trades that may have accidental contact with electricity.



Colour	tan
Part no (standard)	65468
Sizes EU (UK)	39 - 48 (6 - 13)
Part no (extra wide)	65460
Extra wide sizes EU (UK)	41 - 45 (7 - 10.5)
Height	135mm/5"
Weight	702g

bionom x i-PUREnrj clima zone multiple fit





#### leather upper

and heat resistant sole makes it ideal for workers in heavy application areas that may be exposed to hot material.

#### uvex seam free heel cradle

for stability and durability.

#### slip resistant

Sole designed to be slip resistant at heel strike and foot flat.

#### electrical-resistant (EH)

Sole compound is resistant to electrical current helping to reduce dangers with accidental contact with electricity. Electrical Hazard certified according to ASTM F2413-17.\*

#### fuel oil resistant

Outsole resistant to exposure fuel oil.



#### ZIP access

Zip side allows easy access and quick exit. Ideal for those that work around hot material and water hazards.

#### water resistant

Leather upper repellent to water absorption.

#### composite toecap

Lightweight composite toecap that is metal free, non-conductive, insulative and air-port friendly. Complies with Australian (2210.3), European (EN-ISO 20345) and American standards (ASTM F2413) and must meet the same standards as steel toecaps.

#### seam free scuff cap

uvex seam free scuff cap for durability.

#### 300° C heat resistance

Heat resistant nitrile rubber outsole is resistant to contact with hot material.

\*Important note: In accordance with ASTM F2413 footwear protection should be considered a secondary source of protection. Electrical hazard protection can deteriorate quickly with wear and when wet.

\*For full technical specifications visit [uvex-safety.com.au](http://uvex-safety.com.au)



## technical specifications

	uvex 2 x-flow zip	uvex 3 x-flow zip	uvex 3 x-flow
Australian Standard AS 2210.3	✓	✓	✓
European Standard EN ISO 20345	✓	✓	✓
American Standard ATSM 2413	✓	✓	✓
composite toecap	✓	✓	✓
300°C heat resistant outsole	✓	✓	✓
slip resistant	✓	✓	✓
electrical hazard	✓	✓	✓
fuel oil resistant	✓	✓	✓
anti-static			
zip side	✓	✓	
scuff cap	✓	✓	✓
water resistant	✓	✓	✓
upper	Leather/Nylon	Leather/Nylon	Leather
lining	Synthetic	Synthetic	Synthetic
uvex <b>bionom</b> x	✓	✓	✓
uvex <b>climazone</b>	✓	✓	✓
uvex <b>multiple</b> fit system	✓	✓	✓
uvex i- <b>PURE</b> nrij	✓	✓	✓

uvex **multiple** fit system

uvex **multiple** fit system offers multiple widths in the same length in core sizes. Fitting widths are based on the measurement of the widest part of the foot. Measurement is taken of the circumference of the foot at the base joint of the big toe and the joint at the base of the little toe. This will determine the required shoe width in combination with foot length.



Foot length (mm)	Standard fit foot Circum. (mm)	Extra wide fit foot Circum. (mm)	EU Size	UK Size	Mens USA Size	Womens USA Size
232	231.5		37	4	5	6
240	236		38	5	6	7
247	240.5		39	6	7	8
255	245		40	6.5	7.5	8.5
262	249.5	267.5	41	7	8	9
270	254	272	42	8	9	10
277	258.5	276.5	43	9	10	11
285	263	281	44	10	11	12
292	267.5	285.5	45	10.5	11.5	12.5
300	272		46	11	12	13
307	267.5		47	12	13	14
315	281		48	13	14	15



**30**  
day  
comfort  
guarantee\*



#### **UVEX SAFETY AUSTRALIA LIMITED PARTNERSHIP**

Unit 3 Riverside Centre, 24-28 River Road West  
Parramatta NSW 2150, Australia  
T 1800 815 790 E [info@uvex.com.au](mailto:info@uvex.com.au)  
[uvex-safety.com.au](http://uvex-safety.com.au)

#### **UVEX Safety New Zealand Ltd**

T +64 9 300 3519 E [info@uvex.co.nz](mailto:info@uvex.co.nz)  
[uvex-safety.co.nz](http://uvex-safety.co.nz)

UVEX SAFETY AUSTRALIA LIMITED PARTNERSHIP has endeavoured to ensure that all information contained in this document is correct at the time of publication. However, uvex reserves the right, at any time and without notice, to withdraw, alter or replace any products or information set out in this document. All content in this document is subject to copyright laws. No content in this document is to be reproduced in anyway without prior written permission from uvex.

003



---

**protecting people**