



**uvex**

Designed  
with you in mind  
PPE for smaller dimensions

---

protecting people

[uvex-safety.co.uk](https://uvex-safety.co.uk)



uvex



# uvex safety + uvex sports. One brand. One mission.



**uvex products protect people at work, in sport and for leisure. As a partner of international top-level sport, uvex equips over 1000 professional athletes worldwide, e.g. with ski goggles, equestrian riding helmets and cycling helmets.**

The transfer of knowledge between uvex safety and uvex sports makes our products even safer, more functional and more comfortable – both product divisions benefit mutually from the collaboration.

This is evident in our supravision coating technology, for example, which is used equally by both uvex safety and uvex sports. This unique coating ensures maximum anti-fogging properties on sports goggles and safety spectacles, enabling the wearer to put in their very best performance at work or at play.



uvex is the innovative

## sustainable brand systems provider

with international manufacturing expertise. We also have a highly qualified cross-national network of strategic partners – including both sourcing as well as sales – that allows us to meet wide-ranging market and customer requirements, offering our entire product and service portfolio. We commit ourselves in the long-term to a zero-carbon growth, developing product and service concepts in accordance with the 'circular economy' principle.

## Innovation

Always includes customer requirements and investing in innovative production and process technologies, we develop, manufacture and distribute industrial and non-industrial safety products that fulfil the highest standards in terms of quality, function and innovation. With our comprehensive service concept, we are pursuing the goals of generating measureable added value for customers around the world. We strive to be the leaders in innovation in our field.

## Brand

The uvex brand is our future. It is our primary goal that our customers, suppliers and employees join the uvex brand value experience and generate their own success through the strength of our brand (uvex safety and uvex sports).

## Digital transformation

supports our existing core competences, creates additional customer value, facilitates the development of new business models and contributes to securing our existing and future success. Future-oriented methodologies in conjunction with digital tools and processes improve our interface with employees, customers, suppliers and partners.

## Quality

As manufacturers, we place extremely high quality demands on our products and services. For us, "made in uvex" is a promise of quality we make to our customers, which they can always count on. Our aim is to effectively balance economical, ecological and social commitment. In order to achieve this, we have set demanding standards for our manufacturing sites and products, which also apply to all partners in our network.

## Protecting people

People are at the heart of what we do. Protecting and supporting people in their professional and working environment is our company's goal. We offer our employees opportunities for professional and career development in an international and increasingly digital group of companies.

## The winner's podium

is our ultimate target.



# protecting planet

**The uvex sustainability label:  
a promise for people and the environment**

” We have been protecting people in sports, leisure and at work since 1926. “protecting people” is our mission. “protecting planet” is the natural continuation of this mission when it comes to treating people, society and nature responsibly.

With “protecting planet”, we have created a label that offers maximum transparency and information about our sustainability activities: from resource-saving products and innovative measures in our factories through to social commitment and social projects.

“

Michael Winter, Managing Partner of the uvex group



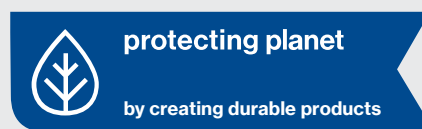
**protecting people** is the mission behind all uvex group brands. The aim is to offer people exactly the right protection they need with our own products. However, uvex's definition of "protection" does not just refer to preventing physical injury – it also takes on meaning in a wider social, ecological and economic context. Our pledge to protect society and the environment using the group-wide **protecting planet** concept is therefore derived from our "protecting people" mission.

We live and breathe this philosophy across a wide spectrum of uvex group divisions and have integrated it into all of our processes – after all, this is the only way to credibly convey our pledge for greater sustainability to the outside world. That's why uvex comprehensively tests, evaluates and optimises all steps along the value creation chain to ensure that products are as sustainable as possible.

#### Examples for the new "protecting planet" label:



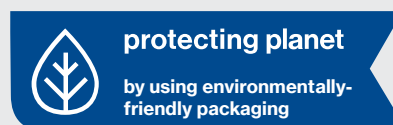
At uvex, we are reducing our CO<sub>2</sub> emissions at various levels. For example, the uvex group only uses **green electricity and green gas** in Germany. Our innovative products and services for the global market are produced in our own factories, many of which are located in Germany and Europe. This ensures both **high quality** and **short transport routes**. With regular **sustainability activities** at our production facilities, we in the uvex group are making an important contribution to reducing our environmental footprint.



uvex is renowned for offering **products of measurably higher quality** than our competitors. The **innovative eyewear coatings** are one example in this respect. Thanks to their **long durability** and **longer service life**, new products need to be purchased less frequently. This not only saves money in the long term, but also, and perhaps more importantly, conserves valuable resources and produces less waste.



uvex considers plant- and bio-based materials to be the future. That's why materials such as bio-based HDPE (high-density polyethylene) made from sugar cane, Lavalan (pressed wool), Prolan (pressed Bavarian sheep wool), rapeseed-oil-based PU foams, bamboo fibres and bio-based polyamide made of castor oil are already being used in all manner of different products.



Environmentally friendly packaging is part and parcel of the uvex group's **sustainability strategy**. For example, **we use climate-neutral and 100% recyclable packaging**, some of which is plant-based in the form of grass cardboard. Further examples are grass paper, stone paper, and recycled packaging film and bags made from **renewable raw materials** such as Tencel.

The uvex sustainability label **protecting planet** can be found on products and their packaging, as well as at trade fair stands or in uvex group catalogues, for example. With this approach, we want to not only emphasise uvex's commitment to these areas of sustainability and demonstrate that we have honoured our pledge, but also raise awareness of environmentally friendly and socially responsible business practices and further promote positive development.



**The EN166/170 standard requires safety eyewear to provide UV protection up to 380 nm. The latest scientific findings show that this is not enough. The WHO (World Health Organization) recommends UV protection up to 400 nm.**



**“The reasons why the WHO recommends UV400 protection are clear. The outer tissues of the eye, cornea and lens fully absorb UV light. While UVB light primarily damages the genetic material, UVA rays penetrate deeper, cause thermal damage and magnify the effects of UVB light.”**

Univ.-Prof. Dr. rer. nat. Olaf Strauß



**uvex UV400 – included in all uvex safety eyewear**

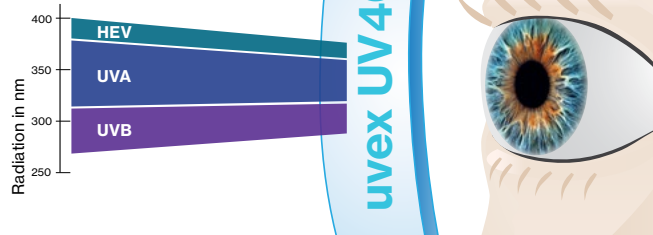
Whether you choose clear or tinted lenses, all uvex safety spectacles are equipped with uvex UV400 effective UV protection as standard – as well as pleasant wearer comfort, a sporty design and top-quality lens coatings.

**Even without sun, UV rays can still put strain on the eye**

When working outdoors, your eyes are regularly exposed to harmful UV radiation – even when it is cloudy. The result: using insufficient protection risks may cause dangerous long-term damage such as corneal injury, cataracts and blindness.

**100 % protection against dangerous UVA and UVB radiation**

For the eye and surrounding skin



uvex UV400 offers complete protection against UVA and UVB radiation as well as high-energy visible light (HEV) up to a wavelength 400 nm.

uvex UV400 not only filters 100 % of UVA rays (20 % still passes through 380 nm lenses), it also completely minimises temperature-induced cell changes – a factor which increases tenfold in the percentage of total cell damage in the range from 380 to 400 nm. In addition, the dangerous, damaging blue light content (HEV), which is also harmful to the retina, is reduced by 15 %.

uvex safety eyewear,  
100 % safety.







Safety Eyewear



# Perfect vision for maximum safety

uvex coating expertise

## It all comes down to the coating

Looking through lenses that are fogged up, scratched or dirty significantly increases the risk of accidents during the working day. uvex has been synonymous with innovative coating technologies for decades. In our centre of expertise in Fürth, we develop and produce scratch-resistant and anti-fog lenses for a multitude of applications.



The innovative coating technology makes uvex safety eyewear a reliable companion during day-to-day work — in a variety of applications.

## Innovative manufacturing process

Conventional safety eyewear combines anti-fogging properties and scratch-resistance on both sides of the lens: This reduces the scratch-resistance and the anti-fogging effect is lessened by regular cleaning. Unlike conventional processes, the unique uvex process applies different coatings to either side of the lens.

## Perfect vision whatever the situation

The outside of uvex lenses has an extremely scratch-resistant, chemical-resistant and easy-to-clean coating, while the inside is coated with a highly durable anti-fog effect — for perfect vision and maximum safety. Lenses are also available with an extremely scratch-resistant or anti-fog coating on both sides — depending on the working environment.

## uvex supravision excellence — next level performance

uvex has further improved its proven uvex supravision excellence coating technology once again: All lenses now offer twice the performance in terms of anti-fogging time, exceeding the requirements of the EN 168 standard four times over.



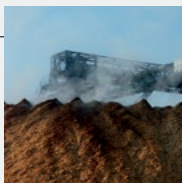
# Coating technology

## Special Coatings

uvex has developed 3 core lens coatings and several special coatings each with their own formula. The flow process used to apply the coating allows different coating combinations to be applied, making them application-specific for maximum effectiveness.

### uvex supravision excellence

Interior	Performance	Exterior
▲▲▲▲	Anti-fog	△△△△
▲▲▲△	Scratch-resistance	▲▲▲▲



- Unique dual-action permanent anti-fog coating on the interior of the lens and a scratch-resistant hard coating on the exterior. This allows each coating to perform at maximum efficiency.
- Extremely scratch-resistant and chemical-resistant on the outside of the lens with non-stick, easy to clean technology
- Long lasting anti-fog performance on the inside
- Anti-fog performance will not diminish even after repeated cleaning
- Suitable for a wide range of workplaces

### uvex supravision plus

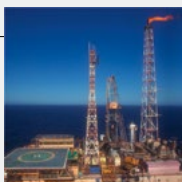
Interior	Performance	Exterior
▲▲▲▲	Anti-fog	▲▲▲▲
▲▲▲△	Scratch-resistance	▲▲▲△



- Long lasting anti-fog performance and scratch-resistance on both sides
- Anti-fog performance will not diminish even after repeated cleaning
- Suitable for environments where there is high humidity and/or frequent temperature fluctuations

### uvex supravision sapphire

Interior	Performance	Exterior
△△△△	Anti-fog	△△△△
▲▲▲▲	Scratch-resistance	▲▲▲▲



- Extremely scratch-resistant and chemical-resistant on both sides
- Non-stick technology making eyewear easier to clean
- For challenging, dirty and/or dusty workplaces

### uvex supravision variomatic

Interior	Performance	Exterior
▲▲▲△	Anti-fog	△△△△
▲▲▲△	Scratch-resistance	▲▲▲▲

Self-tinting coating that darkens when exposed to UV. Benefits from highly effective anti-fog performance inside, extremely scratch-resistant on the outside.

#### Self-tinting coating:

- Automatically darkens within 10 sec. and lightens within 30 sec.

#### Areas of application:

- Frequent moves between indoor and outdoor environments or light and dark workplaces

### uvex supravision infradur

Interior	Performance	Exterior
△△△△	Anti-fog	△△△△
▲▲▲▲	Scratch-resistance	▲▲▲▲

Specifically developed for welding applications. Extremely high scratch-resistance on both sides. Minimises burns from welding sparks.

#### Areas of application:

- Suitable for very dirty, dry welding applications where there is minimal risk of fogging

### uvex supravision extreme

Interior	Performance	Exterior
▲▲▲▲	Anti-fog	△△△△
▲▲▲△	Scratch-resistance	▲▲▲▲

#### Interior:

- Durable, permanent anti-fog performance
- Coating forms a thin veil of water without impairing vision

#### Exterior:

- Extremely scratch-resistant, chemical-resistant and easy to clean

#### Areas of application:

- Prolonged exposure to high risk of fogging and dirt

### uvex supravision ETC (extreme temperature conditions)

Interior	Performance	Exterior
▲▲▲▲	Anti-fog	▲▲▲▲
▲▲▲△	Scratch-resistance	▲▲▲△

#### Interior and exterior:

- Durable, permanent anti-fog performance
- Coating forms a thin veil of water in humid environments without impairing vision

#### Areas of application:

- Workplaces with high humidity and/or frequent temperature fluctuations

### uvex supravision clean

Interior	Performance	Exterior
▲▲▲△	Anti-fog	△△△△
▲▲▲△	Scratch-resistance	▲▲▲▲

Specifically developed for the health care sector. Lenses with uvex supravision clean are autoclavable.

#### Interior:

- Lasting anti-fog performance
- Anti-fog performance lasts a minimum of 20 autoclave cycles

#### Exterior:

- Extremely scratch-resistant, chemical-resistant and easy to clean

#### Areas of application:

- Dry, clean environments

### uvex supravision infradur plus

Interior	Performance	Exterior
▲▲▲▲	Anti-fog	△△△△
▲▲▲△	Scratch-resistance	▲▲▲▲

Specifically developed for welding applications. Lasting anti-fog performance on the inside, extremely scratch-resistant outside and minimises burns from welding sparks.

#### Areas of application:

- Suitable for dirty, welding environments with a high possibility of fogging



# Lens Tints

For different light environments

---

## Clear

### 91% light transmission

Clear lenses offer nearly 100% consistent optical clarity across the entire span on the lens, providing as close to natural vision as possible. Ideal for:

- Most applications with adequate lighting




---

## Amber

### 88% light transmission

Amber tint brightens and adds contrast to shapes and shadows by sharpening detail in challenging lighting conditions that otherwise would be hard to discern, lowering the strain of focus on the wearers' eyes. Ideal for:

- Poorly lit working conditions
- Evening work




---

## Silver Mirror

### 53% light transmission

Silver Mirror 53% allows moderate light transmission through the lens. This tint protects eyes and reduces the need for squinting, which can cause strain and fatigue on optical muscles. Ideal for:

- Environments with changing light conditions (indoor/outdoor)




---

## Grey

### 23% light transmission

HexArmor® Grey tint is used to consistently dim the brightness of surroundings without color distortion and helps to reduce eye strain and fatigue. Ideal for:

- Prolonged sun exposure (bright or partially sunny)
- Blocking natural glare and sun glare




---

## CBR65

### Blue light filter

CBR65 lens tint absorbs up to 50% of harmful blue light with maximum absorption of 450nm, while at the same time a 65% visible light transmission offers better contrast enhancement and relaxed vision to help reduce strain on the eyes and increase comfort. Ideal for:

- Artificial lighting conditions
- Indoor workers, as well as outdoor




---

## Variomatic

Variomatic coated lenses become automatically darker when exposed to UV (within 10 seconds) and become lighter when exposure is reduced (after 30 seconds). Ideal for:

- Frequent movement between indoor and outdoor environments or from light to dark.




---

## Polavision

### 14% light transmission

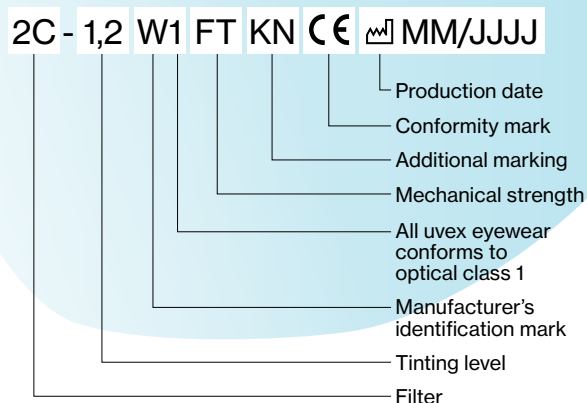
uvex's polavision lens technology blocks unnecessary and unwanted glare from workers' sight, allowing them to perceive their surroundings more accurately and clearly. Protection against reflections and optical irritations also allows for great visual comfort, safeguarding against eyestrain and fatigue. Ideal for:

- Enhancing contrast and detail outdoors
- Applications involving water, sheet metal and snow



# Marking and standards

## Marking on lenses in accordance with EN 166



### Filter

<b>2</b>	UV protection filter (EN 170)
<b>2C/3</b>	UV protection filter with colour recognition (EN 170)
<b>4</b>	IR protection filter (EN 171)
<b>5</b>	Sunglare filter for industrial use (EN 172)
<b>6</b>	Sunglare filter with infrared requirement

### Tinting levels

AR	<b>1.2</b> (Light transmittance 74.4-100%)
clear	<b>1.2</b> (Light transmittance 74.4-100%)
amber	<b>1.2</b> (Light transmittance 74.4-100%)
CBR65	<b>1.4</b> (Light transmittance 58.1-80%)
silver mirror 53%	<b>1.7</b> (Light transmittance 43.2-58.1%)
grey 23%	<b>2.5</b> (Light transmittance 17.8-29.1%)
polavision	<b>3.1</b> (Light transmittance 8-17.8%)
grey 14%	<b>3.1</b> (Light transmittance 8-17.8%)
silver mirror 12%	<b>3.1</b> (Light transmittance 8-17.8%)

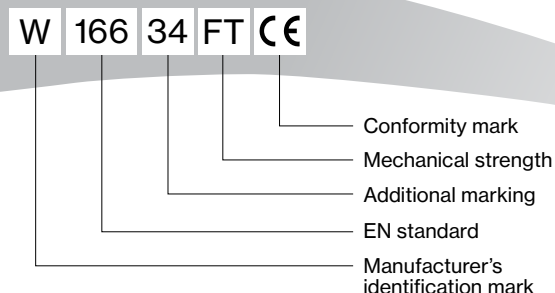
### Mechanical strength

<b>none</b>	Minimum robustness (filters only)
<b>S</b>	Increased robustness
<b>F</b>	Low-energy impact (45m/s or 162 km/h)
<b>B</b>	Medium-energy impact (120m/s or 432 km/h)
<b>A</b>	High-energy impact (190m/s or 684 km/h)
<b>T</b>	Tested under extreme temperatures (-5°C/+55°C)

### Additional markings

<b>K</b>	Surface resistance to damage by small particles in accordance with EN 168 (scratch-resistance)
<b>N</b>	Resistance to fogging in accordance with EN 168
<b>8</b>	Protection against short-circuit electric arc
<b>9</b>	Protection against molten metal and hot solids

## Marking on frame in accordance with EN 166



### Additional markings

<b>none</b>	General use
<b>3</b>	Protection against liquids (drops and splashes)
<b>4</b>	Protection against large dust particles with a grain size of > 5 µm
<b>5</b>	Protection against gases, vapours, smoke, fumes and fine dust particles with a grain size of < 5 µm
<b>8</b>	Protection against short-circuit electric arc
<b>9</b>	Protection against molten metal and hot solids

### Mechanical strength

<b>none</b>	Minimum robustness (filters only)
<b>S</b>	Increased robustness
<b>F</b>	Low-energy impact (45m/s or 162 km/h)
<b>B</b>	Medium-energy impact (120m/s or 432 km/h)
<b>A</b>	High-energy impact (190m/s or 684 km/h)
<b>T</b>	Tested under extreme temperatures (-5°C/+55°C)





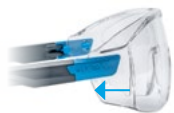
**uvex**

# uvex i-range

sustainable. flexible.  
safe.



The uvex i-range is our new flexible 3 in 1 safety eyewear range that allows wearers to select the right product for the workplace hazard or environment.



**x-tended sideshield** for additional side protection



**Flat lens design** for an unrestricted field of vision



With proven **uvex supravision coating technology** and UV400 protection



**uvex i-range planet is made of recycled and bio-based materials** to protect the environment



**Ergonomically shaped side arms** for a perfect fit and secure hold without creating pressure points



**Three-stage adjustable side arms** for individual customisation



**Soft and flexible face seal** made from sustainable materials for a universal fit



**uvex i-range utilises recycled materials for its packaging** helping to limit the impact on the environment.

### uvex i-range planet

Sustainably manufactured models  
made from recycled, bio-based  
material



9143295



9143265



9143281



9143296



9143266



9143282



9143297



9143267



9143283

### uvex i-range

- Versatile 3 in 1 safety eyewear range – allows eyewear to be adapted according to workplace hazards
- Large, flat lens delivers unrestricted field of vision
- X-tended sideshield offers additional protection from hazards
- Side arms with multi-incline points allow for a high level of individualisation to ensure a good fit for all facial shapes and head widths
- Ergonomically shaped side arms provide a secure fit without pressure
- Robust polycarbonate lens with uvex's proven supravision coating technology – permanent anti-fog and scratch-resistant lens
- UV400 – 100% protection against dangerous UVA and UVB radiation up to 400 nm
- Metal-free
- uvex i-guard: soft, flexible face seal adapts to the wearer providing both protection and comfort. It also protects against droplets or splashes of liquids and large dust particles (markings 3 and 4)
- uvex i-guard+: above features together with increased impact protection

MADE IN GERMANY 

uvex i-range	uvex i-lite	uvex i-lite planet	uvex i-lite	uvex i-guard	uvex i-guard planet
<b>Art. no.</b>	9143265	9143295	9143281	9143266	9143296
<b>Version</b>	uvex supravision excellence	uvex supravision excellence	uvex supravision excellence	uvex supravision excellence	uvex supravision excellence
<b>Standard</b>	EN 166, EN 170	EN 166, EN 170	EN 166, EN 172	EN 166, EN 170	EN 166, EN 170
<b>Frame</b>	anthracite, blue	anthracite, teal	anthracite, lime	anthracite, blue	anthracite, teal
	W 166 F CE	W 166 F CE	W 166 F CE	W 166 34 F CE	W 166 34 F CE
<b>Lens</b>	PC clear	PA clear, bio-based	PC grey 23%	PC clear	PA clear, bio-based
	UV400	UV400	UV400	UV400	UV400
	2C-1,2 W1 FKN CE	2C-1,2 W1 FKN CE	5-2,5 W1 FKN CE	2C-1,2 W1 FKN CE	2C-1,2 W1 FKN CE
<b>Weight</b>	32 g	32 g	32 g	48 g	48 g

uvex i-range	uvex i-guard	uvex i-guard+	uvex i-guard+ planet	uvex i-guard+
<b>Art. no.</b>	9143282	9143267	9143297	9143283
<b>Version</b>	uvex supravision excellence	uvex supravision excellence	uvex supravision excellence	uvex supravision excellence
	sunglare filter			sunglare filter
<b>Standard</b>	EN 166, EN 172	EN 166, EN 170	EN 166, EN 170	EN 166, EN 172
<b>Frame</b>	anthracite, lime	anthracite, blue	anthracite, teal	anthracite, lime
	W 166 34 F CE	W 166 34 B CE	W 166 34 B CE	W 166 34 B CE
<b>Lens</b>	PC grey 23%	PC clear	PC clear	PC grey 23%
	UV400	UV400	UV400	UV400
	5-2,5 W1 FKN CE	2C-1,2 W1 BKN CE	2C-1,2 W1 BKN CE	5-2,5 W1 BKN CE
<b>Weight</b>	48 g	50 g	50 g	50 g



# uvex pure-fit

stylish. safe. sustainable.

## Designed to be recycled

Thanks to their unique single-material design, these safety spectacles – just like their packaging – are 100% recyclable. Manufactured using a fully automated, energy-saving production process, the CO<sub>2</sub> emissions for this product are reduced by around 50% making the uvex pure-fit a highly sustainable solution. Using new packaging techniques, uvex have also reduced the amount of packaging materials by more than half which helps reduce waste and cut CO<sub>2</sub> emissions in logistics.



**Product and packaging  
100% recyclable**



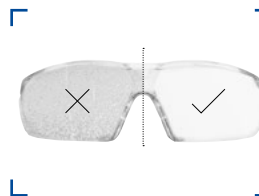
**x-tended sideshield**  
for additional side protection  
from workplace debris and  
contaminants



**Frameless and innovative lens**  
design for an optimum,  
unrestricted field of vision



**Unique uvex side arm concept**  
Hingeless, flexible side arms  
ensure a secure hold without  
pressure points



**With proven uvex supravision  
coating technology and UV400**  
protection



**Feather light** - at just 19 grams the  
ultra low weight enhances comfort.  
Made purely from polycarbonate  
giving a unobtrusive, modern,  
clean design.

## uvex pure-fit

- Reduced to the max - pure, ultralight safety spectacle - weighing a mere 19 grams for a extremely comfortable wear
- Designed to be recycled
- A timeless design that will appeal to all and not date, helping to prolong the life cycle of the product
- Innovative side arm concept - flexible side arms for a perfect fit and secure hold without creating pressure points
- Frameless lens design for a wide field of vision
- x-tended sideshield offers additional protection from hazards
- Nose bridge designed for all-day comfort
- Slim side arm geometry aids compatibility with other PPE
- Robust polycarbonate lens with uvex's proven supravision excellence lens coating technology – permanent anti-fog on the inside and a durable, scratch-resistant coating on the outside
- Metal-free
- UV400 - 100% production against UVA and UVB radiation up to 400 nm

uvex pure-fit	
<b>Product code</b>	9145265
<b>Version</b>	uvex supravision excellence
<b>Standard</b>	EN 166, EN 170
<b>Frame</b>	transparent W 166 FT CE
<b>Lens</b>	PC clear UV400 2C-1.2 W1 FTKN CE
<b>Weight</b>	19 g

**MADE IN GERMANY**



**protecting planet**

**by creating  
recyclable products**

**eXXtremely cool look**  
dynamic, attractive  
frame design

**maXXimum comfort**  
ergonomically shaped side arms  
with soft-grip temple ends for a  
comfortable and secure hold

**fleXXible nose pad**  
for a non-slip and  
pressure-free fit

**eXXcellent vision**  
with proven uvex supravision  
coating technology and UV400  
protection

# uvex suXXeed

strong. sporty. functional.



9181265



9181281



9181180

## uvex suXXeed

- Sporty safety spectacle, contoured to fit multiple face shapes and sizes for a comfortable fit
- Ergonomically shaped side arms with soft-grip temple ends provide a comfortable, secure fit without pressure
- Soft, flexible nose pad adapts to the wearer, delivering a non-slip and pressure-free fit
- uvex's proven supravision lens coating technology: permanent anti-fog coating on the inside, scratch resistant outside
- Optional clip-in frame seal provides extra protection against particles, dirt and dust
- Metal free
- UV400 - 100% protection against UVA and UVB radiation up to 400 nm



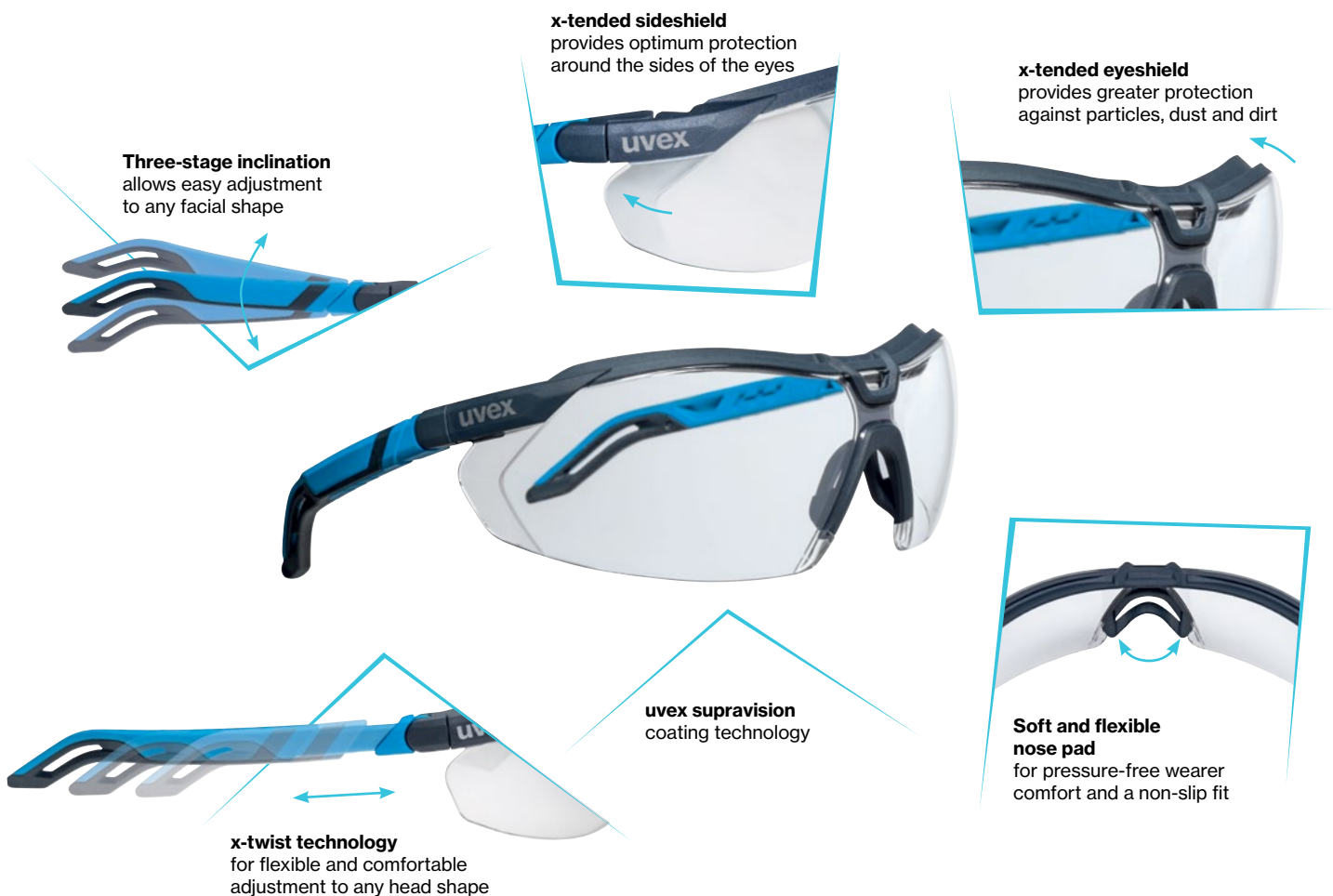
Accessories: 9181001  
Clip-in frame for uvex  
suXXeed

uvex suXXeed		
<b>Product code</b>	9181265	9181281
<b>Version</b>	uvex supravision excellence	uvex supravision excellence sunglare filter
<b>Standard</b>	EN 166, EN 170	EN 166, EN 172
<b>Frame</b>	anthracite, blue	anthracite, lime
	W 166 FT CE	W 166 FT CE
<b>Lens</b>	PC clear	PC grey 23%
	UV400	UV400
	2C-1.2 W1 FTKN CE	5-2.5 W1 FTKN CE
<b>Weight</b>	27 g	27 g
uvex suXXeed		
<b>Product code</b>	9181180	9181001
<b>Version</b>	uvex supravision excellence incl. clip-in frame	Clip-in frame for uvex suXXeed
<b>Standard</b>	EN 166, EN 170	
<b>Frame</b>	anthracite, blue	black
	W 166 FT CE	
<b>Lens</b>	PC clear	
	UV400	
	2C-1.2 W1 FTKN CE	
<b>Weight</b>	32 g	5g



# uvex i-5

detailed. modern. trusted



MADE IN GERMANY

## uvex i-5

- Soft, flexible nose pad for maximum comfort and a non-slip fit
- x-tended eyeshield with soft seal technology wraps around the brow providing additional protection from particle ingress
- x-tended sideshield provides further protection without restricting peripheral vision
- 3-position side arm inclination adapts easily to any facial shape
- Soft, extendable x-twist side arm technology offers adaptable, pressure-free comfort and a stable, non-slip fit
- uvex's proven supravision lens coating technology: permanent anti-fog coating on the inside, scratch resistant outside
- Metal-free



reddot winner 2020



9183265



9183281



9183064

uvex i-5			
<b>Product code</b>	9183265	9183281	9183064
<b>Design</b>	uvex supravision excellence	uvex supravision excellence sunglare filter	uvex supravision excellence CBR65
<b>Standard</b>	EN 166, EN 170	EN 166, EN 172	EN 166, EN 172
<b>Frame</b>	anthracite, blue W 166 FT CE	anthracite, lime W 166 FT CE	black, white W 166 FT CE
<b>Lens</b>	PC clear UV400 2C-1.2 W1 FTKN CE	PC grey 23% UV400 5-2.5 W1 FTKN CE	PC brown 65% UV400 5-1.4 W1 FT KN CE



# uvex pheos cx2

## winners at work



9198237



9198257



9198064

**MADE IN GERMANY** 

### uvex pheos cx2

- uvex has developed an injection moulding process which enables it to combine hard and soft materials around brow, nose and side arms that adapt to the wearer's face, delivering ultimate fit for outstanding protection and comfort
- Slim arm geometry makes it easy to wear with other PPE e.g. ear defenders, helmets and bump caps
- Duo-spherical lens delivers excellent field of vision
- The slight twist of the side arm delivers a light spring effect adapting to the wearers head. This together with soft-grip technology delivers a non-slip, comfortable fit

- Permanent uvex supravision lens coating technology: anti-fog coating on the inside (during EN test, lens stays fog free for at least 16 seconds - norm requires 8 seconds to pass the anti-fog test), extremely scratch-resistant and chemical-resistant on the outside (uvex supravision excellence)
- Provides reliable UVA, B and C protection up to 400nm
  - Lens coatings are permanent, staying active for the life of the product - even after repeated cleaning

uvex pheos cx2			
<b>Product code</b>	9198237	9198257	9198064
<b>Design</b>	uvex supravision excellence sunglare filter	uvex supravision excellence	uvex supravision excellence sunglare filter
<b>Standard</b>	EN 166, EN 172	EN 166, EN 170	EN 166, EN 172
<b>Frame</b>	white, black W 166 FT CE	blue, grey W 166 FT CE	white, black W 166 FT CE
<b>Lens</b>	PC grey 23% UV 400 5-2.5 W1 FTKN CE	PC clear UV 400 2C-1.2 W1 FTKN CE	PC CBR 65 UV 400 5-1.4 W1 FTKN CE



## Safety Spectacles

uvex pheos s guard • uvex pheos s



9192680

### uvex pheos s guard

- The uvex pheos s guard is a functional expansion of the successful pheos spec range
- A winning combination of the pheos spec, foam frame and headband
- Soft padded frame creates a close seal to reduce dust ingress
- Elasticated headband for secure fit
- uvex supravision extreme lens coating technology: Permanent anti-fog coating on the inside, scratch resistant on the outside – ideal for strenuous tasks

	uvex pheos s guard
<b>Product code</b>	9192680
<b>Design</b>	uvex supravision extreme narrow size incl. extra frame and headband
<b>Standard</b>	EN 166, EN 170
<b>Frame</b>	black, grey W 166 FT CE
<b>Lens</b>	PC clear UV400 2C-1.2 W1 FTKN CE
<b>Weight</b>	45 g

MADE IN GERMANY 



9192720



9192788



9192786

### uvex pheos s

- uvex supravision excellence lens coating technology: permanent anti-fog coating on the inside and scratch resistant on the outside. Permanent even after repeated cleaning.
- The frameless, duo-spherical lens with integral brow guard gives additional eye coverage for increased protection
- The side arms combine hard and soft materials which grip the head for a secure, stable and comfortable fit
- Low profile side arms enhance compatibility with other items of PPE

	uvex pheos s	
<b>Product code</b>	9192720	9192788
<b>Design</b>	uvex supravision excellence narrow size	uvex supravision excellence narrow size, contrast-enhancing
<b>Standard</b>	EN 166, EN 170	EN 166, EN 170
<b>Frame</b>	black, green W 166 FT CE	black, yellow W 166 FT CE
<b>Lens</b>	PC clear UV400 2C-1.2 W1 FTKN CE	PC amber UV400 2C-1.2 W1 FTKN CE
<b>Weight</b>	29 g	29 g

	uvex pheos s
<b>Product code</b>	9192786
<b>Design</b>	uvex supravision excellence narrow size, sunglare filter
<b>Standard</b>	EN 166, EN 172
<b>Frame</b>	black, grey W 166 FT CE
<b>Lens</b>	PC grey 23% UV400 5-2.5 W1 FTKN CE
<b>Weight</b>	29 g

# Safety Spectacles

uvex i-works • uvex sportstyle



9194171



9194365



9194270



9193376



9193280



9193064

## uvex i-works

- Sporty design - robust while looking good
- Panoramic lens for great lateral vision
- uvex supravision excellence lens coating technology: permanent anti-fog coating on the inside and scratch resistant on the outside
- Soft grip side arms - ultra comfortable. Stable, non-slip fit
- Low profile side arms with practical hang cord attachment
- Metal free

uvex i-works		
<b>Product code</b>	9194171	9194365
<b>Design</b>	uvex supravision excellence narrow size	uvex supravision excellence narrow size, contrast-enhancing
<b>Standard Frame</b>	EN 166, EN 170 anthracite, blue	EN 166, EN 170 black, yellow
<b>Lens</b>	W 166 FT CE PC clear UV400	W 166 FT CE PC amber UV400
<b>Weight</b>	2C-1.2 W1 FTKN CE 26 g	2C-1.2 W1 FTKN CE 26 g
uvex i-works		
<b>Product code</b>	9194270	
<b>Design</b>	uvex supravision excellence narrow size, sunglare filter	
<b>Standard Frame</b>	EN 166, EN 172 anthracite, grey	
<b>Lens</b>	W 166 FT CE PC grey 23% UV400	
<b>Weight</b>	5-2.5 W1 FTKN CE 26 g	

## uvex sportstyle

- Close fitting, athletic design
- Low weight - just 23g for incredible comfort
- Contoured lens fits all facial shapes
- Soft grip side arms, nose bridge and brow for non-slip comfort
- uvex supravision extreme lens coating technology: permanent anti-fog coating on the inside and scratch resistant on the outside
- Equally good for industrial or sports activities

uvex sportstyle		
<b>Product code</b>	9193376	9193280
<b>Design</b>	uvex supravision extreme narrow size	uvex supravision extreme narrow size, sunglare filter
<b>Standard Frame</b>	EN 166, EN 170 black, petrol	EN 166, EN 172 white, black
<b>Lens</b>	W 166 FT CE PC clear UV400	W 166 FT CE PC grey 23% UV400
<b>Weight</b>	2C-1.2 W1 FTKN CE 23 g	5-2.5 W1 FTKN CE 23 g
uvex sportstyle		
<b>Product code</b>	9193064	
<b>Design</b>	uvex supravision extreme narrow size	
<b>Standard Frame</b>	EN 166, EN 172 white, black	
<b>Lens</b>	W 166 FT CE CBR65 UV400	
<b>Weight</b>	2C-1.2 W1 FTKN CE 23 g	



## Safety Goggles

uvex u-sonic • uvex pheos cx2 sonic



9308245



309275



9309286

### uvex u-sonic

- Compact design - from just 69 g
- Low profile, wraparound design fits a wide range of facial shapes
- Soft seal frame technology adapts to the wearer for a customised fit - protects against liquid droplets/splash, large dust particles
- uvex supravision excellence lens coating technology: permanent anti-fog coating on the inside of the lens, scratch resistant on the outside
- Wide fully adjustable head strap - secure, pressure free and ergonomically optimised fit
- High levels of compatibility with other items of PPE
- 100% UV protection

	uvex u-sonic
<b>Product code</b>	9308245
<b>Design</b>	uvex supravision excellence
	narrow size
<b>Standard</b>	EN 166, EN 170
<b>Frame</b>	anthracite, lime
	W 166 34 B CE
<b>Lens</b>	PC clear
	UV400
	2C-1.2 W1 BKN CE
<b>Weight</b>	72 g

MADE IN GERMANY 

### uvex pheos cx2 sonic

- uvex's lightest compact wide-vision goggles (34 grams)
- High mechanical strength B (120 m/s)
- Designation 3 (liquids), 4 (coarse dust) and T (extreme temperatures)
- Comfortable protection thanks to soft forehead and nose piece moulded directly onto the lens
- Very soft, light textile headband for secure and comfortable fit
- Can be easily combined with other PPE

	uvex pheos cx2 sonic	
<b>Product code</b>	9309275	9309286
<b>Design</b>	uvex supravision extreme	uvex supravision extreme
	narrow size	narrow size, sunglare filter
<b>Standard</b>	EN 166, EN 170	EN 166, EN 172
<b>Frame</b>	white, black	white, black
	W 166 34 BT CE	W 166 34 BT CE
<b>Lens</b>	PC clear	PC grey 23%
	UV400	UV400
	2C-1.2 W1 BTKN CE	5-2.5 W1 BTKN CE
<b>Weight</b>	34 g	34 g

MADE IN GERMANY 

# uvex Prescription Safety Eyewear

## Online Ordering Process

### Prescription online ordering process



uvex's online ordering system allows customers to order prescription eyewear quickly and easily. The automated system enables approved personnel (Authorising Officers) to:

- Generate a form quickly: for print or to be emailed to an employee
- Create and track the status of new prescription orders as they move through the manufacturing process: from when the Authorising Officer generates the form through to the order being despatched to the optician and finally invoiced
- Review historical orders and run user reports

## The Optician's Portal

This is a great advantage to the flow and speed of the order process and will give employees a better experience when they visit the optician.

If an employee chooses a frame or a lens type which is not on your pre-approved list for selection, the optician can advise the employee straightaway. The employee will then have a choice to either choose something from the pre-approved list or to continue with the order.

If they choose the latter, uvex will seek approval as necessary. Orders will be placed on hold until approval is granted.

### Once registered your Optician will be able to:



See the approved frames for your employees



Review and complete all fields to ensure timely processing



Submitted orders will go straight into production. Delays will only occur if there is a query with the order e.g. obtaining approval for non-standard items



Check the status of the order at any point once in production and advise the employee accordingly



Another advantage of the optician's portal is that uvex will be able to pay the optician for the dispensing and sight test fees by BACS payment, saving administration time and providing increased traceability.



For more information about the uvex prescription online ordering process, please visit [uvex-safety.co.uk/prescription](http://uvex-safety.co.uk/prescription).

To speak to a member of our prescription team call 01252 725552 or email [help-prescription@uvex.co.uk](mailto:help-prescription@uvex.co.uk).



# Caring for your safety eyewear

uvex eyewear cleaning and storage accessories



Keeping safety eyewear clean and scratch-free not only keeps employees seeing clearly, it also extends the life of the product as well - resulting in significant cost savings for companies.

The main cause for scratched or under performing safety eyewear lenses is improper cleaning. Incorrect handling and storage can also cause unnecessary damage to lenses.

**Follow these simple care and cleaning steps to increase the life of uvex safety eyewear:**



Lightly blow off any loose dirt or debris from your lenses.



Rinse your lenses with cool water. uvex eyewear engineered with nanotechnology - a non stick formula that makes lenses easier to clean. At your uvex cleaning station, spray the cleaning solution directly onto the lenses.



Use a lens-safe tissue (provided at the uvex cleaning station) to dry and wipe clean.



If you're not immediately putting the safety eyewear on, store it in a pouch or case before putting them in a safe spot. Never put unprotected safety eyewear in your pocket.

If a cleaning station is not available, use a soft, dry microfiber cloth to gently wipe your lenses.\*

In addition to properly cleaning, check your safety eyewear before you put them on to ensure that the lenses and frames are intact. If anything is defective, replace immediately. Inspection is the first line of protection.



9970007



9972101



9971002



9963000

uvex lens cleaning station (includes fluid and tissues)

Art.no. 9970007  
Retail unit 1

uvex cleaning fluid

Art.no. 9972101  
Retail unit 1

uvex clear tissues

Art.no. 9971002  
Retail unit 1

uvex lens cleaning towelettes

Art.no. 9963000





Safety Gloves



# Innovative safety gloves “Made in Germany”

Manufacturing and technology expertise



Video



## uvex hand protection centre of expertise in Lüneburg

A fully integrated development process, state-of-the-art robot-controlled plant technology and strict production controls guarantee that our safety gloves are of first-class quality. Production in Germany ensures sustainable, resource-saving production and short distances from manufacturer to end user.

### Sustainable production:

- CO<sub>2</sub>-neutral production
- Solvents and plasticisers not used in production
- Sustainable environmental and energy management (ISO 14001/ISO 50001)
- Made locally in Germany



### Social responsibility:

- Full implementation of the ILO standard
- Continuous social audits at partner companies (uvex social standard)
- Social engagement with a focus on disadvantaged children



### Health:

- Over-compliance with REACH regulations on eliminating harmful substances
- Ongoing analysis of almost 200 critical substances (uvex harmful substances standard)
- Certified in line with Oeko-Tex® Standard 100
- DERMA-certified free from allergenic substances



### Comfort:

- Extremely comfortable thanks to the use of breathable natural and functional fibres
- Optimum tactile feel thanks to an ergonomic fit
- Natural feel against the skin



**MADE IN GERMANY**

# Extensive know-how is part of our service

Service expertise



## We know exactly what you want.

Our expertise is available for you at all times which forms the basis of our on-site.

Risk-hazard analysis service: Our hand protection specialists work with you to determine which safety gloves are best suited to your individual requirements. Seminars, laboratory analyses and online tools round off our service portfolio.

## Fully integrated development processes

- own yarn/liner manufacturing
- own compounding (blending)
- specially developed moulding and process technology
- innovative coating technology
- development of customer-specific solutions
- technical modifications to existing products (e.g. thermal lining)
- individual production (e.g. gloves for disabled people)

## Consultation / training / application technology

- on-site consultation from uvex product specialists
- practical hand protection seminars (uvex academy)
- plant and laboratory tours for customers
- cooperation with scientific institutes
- measurement and analysis service in own laboratories
  - mechanical standard test in accordance with EN 388
  - permeation tests in accordance with EN 374
  - special tests (e.g. antistatic/grip measurement/ climate test)
- individual certifications (e.g. for ingredients, coating compatibility, food product suitability)

## Information / e-services

- Chemical Expert System (CES)
- designer glove plan
- online glove navigator
- online product data sheets
- online declaration of conformity



# uvex phynomic

## Perfection in 3 dimensions



clima zone

pure standard

MADE IN GERMANY 



### 1 Perfect fit



#### 3D ergo technology – precision all the way to the fingertips

Ergonomic solution for every wearer with up to 8 perfectly coordinated sizes.

The advantages for the wearer:

- The glove fits like a second skin
- Natural touch
- Maximum flexibility for fatigue-free work

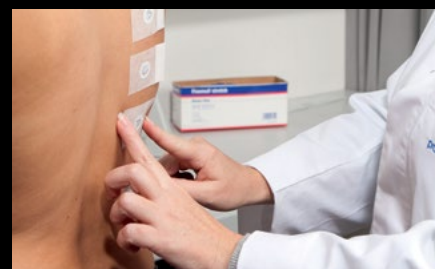
### 2 Optimum functionality



#### Coatings perfectly adapted to the application at hand

- For dry areas: aqua-polymer waterproofing
- For dry and slightly damp areas: aqua-polymer foam coating
- For humid and oily areas: aqua-polymer xtra grip foam coating
- For wet and oily areas: aqua-polymer pro coating

### 3 Skin safe – product safe



#### Enhanced skin care and product protection

##### Health protection:

- No skin irritation
- Dermatologically approved\*
- Certified in accordance with OEKO-TEX® Standard 100
- Free from harmful solvents (DMF, TEA)
- Free from allergenic substances

##### Product protection:

- Silicone-free according to imprint test
- Suitable for sensitive surfaces
- Does not leave any traces/marks
- Certified for food processes\*\*

\* The uvex phynomic series was clinically tested by the proDERM® Institute for Applied Dermatological Research (Hamburg, Germany). The extremely good skin tolerability of uvex phynomic safety gloves has been dermatologically tested (proDERM® studies: 11.0356-02, 11.0482-11, 13.0202-02, 15.0188-02, 15.0219-11).

Detailed information on the award criteria applied by the certification bodies OEKO-TEX®, proDERM and Top100 can be found at: [www.uvex-safety.co.uk/certificates](http://www.uvex-safety.co.uk/certificates)

\*\* Models uvex phynomic lite, foam, C3, C5

# Mechanical Risks

Area of application: precision / all-round



## uvex phynomic lite

- Touch screen compatible
- Second skin fit gives a natural touch
- Flexible construction reduces fatigue
- Dermatologically tested and approved
- Free from allergenic substances - no harmful substances used in the manufacturing of this glove
- Suitable for the most allergy sensitive wearers
- Certified to Oeko-Tex® Standard 100
- High levels of dexterity
- High levels of breathability
- Excellent dry grip

## uvex phynomic foam

- Water repellent – outstanding grip in dry applications
- Certificated for the food industry
- Leaves no trace marks on products
- Flexible construction reduces fatigue
- Dermatologically approved
- Suitable for the most allergy sensitive wearers
- Free from allergenic substances - no harmful substances used in the manufacturing of this glove
- Certified to Oeko-Tex® Standard 100
- High levels of dexterity
- High levels of breathability
- Excellent dry grip

## uvex phynomic allround

- Suitable for multiple applications
- Water repellent – outstanding grip in dry applications
- Leaves no trace marks on products
- Open back for increased breathability
- High abrasion resistance for more demanding environments
- Flexible construction reduces fatigue
- High levels of dexterity
- Dermatologically tested and approved
- Free from allergenic substances - no harmful substances used in the manufacturing of this glove
- Suitable for the most allergy sensitive wearers
- Certified to Oeko-Tex® Standard 100

<b>Product code</b>	60040	60050	60049
<b>Design</b>	uvex phynomic lite	uvex phynomic foam	uvex phynomic allround
<b>Standard</b>	EN388:2016 (2121X), food standard approved	EN388:2016 (3121X), food standard approved	EN388:2016 (3131X)
<b>Sizes</b>	5 to 12	5 to 12	5 to 12
<b>Coating</b>	aqua-polymer impregnation on palm and fingertips, knitted cuff	aqua-polymer foam coating on palm and fingertips knitted cuff	aqua-polymer foam coating on palm and fingertips knitted cuff
<b>Base glove</b>	polyamide/elastane	polyamide/elastane	polyamide/elastane
<b>Suitable for</b>	dry and slightly damp areas of application	dry areas and slightly damp areas of application	dry areas and slightly damp areas of application



# Mechanical Risks

Area of application: precision / all-round



## uvex phynomic pro

- Flexible non-slip aqua-polymer-pro coating has exceptional dirt and moisture-repellent properties
- The bamboo and polyamide/elastane liner is pleasant on the skin and offers excellent moisture absorption
- Second skin fit gives a natural touch
- Flexible construction reduces fatigue
- Dermatologically tested and approved
- Free from allergenic substances - no harmful substances
- Suitable for the most allergy sensitive wearers
- Certified to Oeko-Tex® Standard 100
- Excellent levels of dexterity and grip
- High levels of breathability

<b>Product code</b>	60062
<b>Design</b>	uvex phynomic pro
<b>Standard</b>	EN388:2016 (2121X)
<b>Sizes</b>	6 to 12
<b>Coating</b>	aqua-polymer pro coating on palm and 3/4 of back of hand, knitted cuff
<b>Base glove</b>	bamboo/polyamide/elastane
<b>Suitable for</b>	damp/oily areas of application

## uvex phynomic x-foam HV

- Intended design to enable one or more digits to detach / tear should fingers become trapped in machinery
- Product features a perforated seam near digit base to detach
- Flexible construction reduces fatigue
- Dermatologically tested and approved
- Free from allergenic substances - no harmful substances
- Suitable for the most allergy sensitive wearers
- Certified to Oeko-Tex® Standard 100
- Excellent levels of dexterity and grip
- High levels of breathability

<b>Product code</b>	60054
<b>Design</b>	uvex phynomic x-foam HV
<b>Standard</b>	EN388:2016 (31X1X)
<b>Sizes</b>	6 to 12
<b>Coating</b>	aqua-polymer foam coating on palm and fingertips knitted cuff
<b>Base glove</b>	polyamide/elastane
<b>Suitable for</b>	dry areas and slightly damp areas of application

## uvex phynomic wet

- The uvex phynomic wet coating allows liquids to run off while light oil is absorbed for high levels of grip in moderate wet and light oil applications
- Second skin fit gives a natural touch
- Flexible construction reduces fatigue
- High levels of dexterity
- Dermatologically tested and approved
- Free from allergenic substances - no harmful substances used in the manufacturing of this glove
- Suitable for the most allergy sensitive wearers
- Certified to Oeko-Tex® Standard 100
- High levels of breathability

<b>Product code</b>	60060
<b>Design</b>	uvex phynomic wet
<b>Standard</b>	EN388:2016 (3131X)
<b>Sizes</b>	6 to 12
<b>Coating</b>	aqua-polymer foam coating on palm and fingertips knitted cuff
<b>Base glove</b>	polyamide/elastane
<b>Suitable for</b>	damp/oily areas of application





# Mechanical Risks

Area of application: precision / all-round



EN 388:2016  
4121X



pure standard

MADE IN GERMANY



EN 388:2016  
4X43B



pure standard

MADE IN GERMANY



EN 388:2016  
4X42C



pure standard

MADE IN GERMANY

## uvex phynomic XG

- The XtraGrip glove – best oil grip in class!
- Excels in damp and very oily conditions
- Ultra slow liquid breakthrough provides additional skin protection
- Flexible construction reduces fatigue
- Dermatologically tested and approved
- Free from allergenic substances - no harmful substances used in the manufacturing of this glove
- Suitable for the most allergy sensitive wearers
- Certified to Oeko-Tex® Standard 100
- High levels of dexterity
- High levels of breathability

## uvex phynomic C3

- Cut level 3 protection (level 3/5)
- Unrivalled grip in dry/slightly damp environments
- Flexible construction reduces fatigue
- Dermatologically tested and approved
- No harmful substances used in gloves construction
- Free from allergenic substances
- Certified to Oeko-Tex® Standard 100
- Suitable for the most allergy sensitive wearers
- Food sector approved - leaves no trace marks on products
- High levels of breathability

## uvex phynomic C5

- Lightweight and sensitive cut protection safety glove with a very good cut protection (Level C)
- Very good mechanical abrasion resistance thanks to the damp-resistant aqua-polymer foam coating
- Good grip in dry and slightly damp areas
- Good cut protection and high tear resistance
- Highly breathable coating
- Outstanding tactile feel when assembling parts

<b>Product code</b>	60070	60080	60081
<b>Design</b>	uvex phynomic XG	uvex phynomic C3	uvex phynomic C5
<b>Standard</b>	EN388:2016 (4121X)	EN388:2016 (4X43B) food standard approved	EN388:2016 (4X42C) food standard approved
<b>Sizes</b>	6 to 12	6 to 12	6 to 12
<b>Coating</b>	aqua-polymer Xtra Grip foam coating on palm and fingertips, knitted cuff	aqua-polymer foam coating on palm and fingertips knitted cuff	Dyneema®Diamond Technology palm and fingertips knitted cuff
<b>Base glove</b>	polyamide/elastane	polyamide/elastane /HPPE/glass	polyamide/elastane
<b>Suitable for</b>	damp/oily areas of application	dry and slightly damp areas of application	dry and slightly damp areas of application



# Mechanical Risks

Area of application: precision / all-round



## uvex athletic allround

- Lightweight and dirt-resistant all-round safety glove for mechanical tasks
- Very good mechanical abrasion resistance thanks to the damp-resistant aqua-polymer foam coating
- Very good grip in dry and slightly damp areas
- Perfect fit thanks to the “slim fit” design and elastane with liner
- Certified according to OEKO-TEX® Standard 100

## uvex athletic lite

- Lightweight and sensitive safety glove for mechanical tasks
- Matt, porous and particularly abrasion-resistant microfoam coating
- Very good grip in dry and slightly damp areas
- High breathability thanks to the porous coating, reducing sweating
- Perfect fit thanks to the “slim fit” design and elastane in the liner
- Certified according to OEKO-TEX® Standard 100

## uvex athletic lite ESD

- Lightweight and sensitive safety glove for mechanical tasks, even a little thinner and with higher dexterity than the uvex athletic lite
- Touchscreen ability and ESD function according to DIN EN 16350:2014
- Matt, porous and particularly abrasion-resistant microfoam coating
- Very good grip in dry and slightly damp areas
- High breathability thanks to the porous coating, reducing sweating
- Perfect fit thanks to the “slim fit” design and elastane in the liner
- Certified according to OEKO-TEX® Standard 100

<b>Product code</b>	60028	60027	60035
<b>Design</b>	uvex athletic allround	uvex athletic lite	uvex athletic lite ESD
<b>Standard</b>	EN 388 (4 1 2 2 X)	EN 388 (4 1 3 2 X)	EN 388 (4 1 2 1 X), DIN EN 16350:2014
<b>Sizes</b>	6 to 11	6 to 11	6 to 11
<b>Coating</b>	palm and fingertips with NBR foam coating	palm and fingertips with micro NBR foam coating	palm and fingertips with micro NBR foam coating
<b>Base glove</b>	polyamide, elastane	polyamide, elastane	polyamide, elastane, carbon
<b>Suitable for</b>	Mostly Dry and very light touch for wet/oil	Mostly Dry and very light touch for wet/oil	Mostly Dry and very light touch for wet/oil



# Mechanical Risks

Area of application: cut



Crotch zone reinforcement



EN 388:2016  
4 X 4 4 B



Crotch zone reinforcement



EN 388:2016  
4 X 4 3 C



Crotch zone reinforcement



EN 388:2016  
4 X 4 3 D



## uvex athletic B XP

- Increased cut protection (Level B)
- Biobased HPPE
- Good grip on dry and (slightly) oily/wet workplaces
- Very good mechanical abrasion resistance
- Reinforced thumb joints
- Matt, porous and particularly abrasion-resistant microfoam coating
- High flexibility, very good fit
- Very good tactile feel
- Suitable for industrial washing
- Certified according to OEKO-TEX® Standard 100

## uvex athletic C XP

- Medium cut protection (Level C)
- Good grip on dry and (slightly) oily/wet workplaces
- Very good mechanical abrasion resistance
- Reinforced thumb joints
- Matt, porous and particularly abrasion-resistant microfoam coating
- High flexibility, very good fit
- Very good tactile feel
- Suitable for industrial washing
- Certified according to OEKO-TEX® Standard 100

## uvex athletic D5 XP

- High cut protection (Level D)
- Good grip on dry and (slightly) oily/wet workplaces
- Very good mechanical abrasion resistance
- Reinforced thumb joints
- Matt, porous and particularly abrasion-resistant microfoam coating
- High flexibility, very good fit
- Very good tactile feel
- Suitable for industrial washing
- Certified according to OEKO-TEX® Standard 100

<b>Product code</b>	60036	60037	60030
<b>Design</b>	uvex athletic B XP	uvex athletic C XP	uvex athletic D5 XP
<b>Standard</b>	EN 388 (4 X 4 4 B)	EN 388 (4 X 4 3 C)	EN 388 (4 X 4 3 D)
<b>Sizes</b>	6 to 12	6 to 12	6 to 11
<b>Coating</b>	palm and fingertips coated, micro NBR foam coating	palm and fingertips coated, micro NBR foam coating	palm and fingertips coated, micro NBR foam coating
<b>Base glove</b>	Biobased HPPE, glass, polyamide, elastane	HPPE, glass, polyamide, elastane	HPPE, steel, polyamide, elastane
<b>Suitable for</b>	Mostly Dry and very light touch for wet/oil	Mostly Dry and very light touch for wet/oil	Mostly Dry and very light touch for wet/oil





# Mechanical Risks

Area of application: precision / all-round



## uvex unipur 6631

- Lightweight and flexible safety glove offers excellent levels of dexterity
- The inside of the hand and the fingertips are PU coated
- High levels of tear resistance
- Excellent dexterity
- Abrasion level 4. Highest level of durability for a longer lasting glove, suitable for challenging environments
- Suitable for dry and slightly damp areas of application

## uvex unidur 6641

- A stand out glove due to the market leading Dyneema® fibre
- The top-quality thread ensures excellent cut protection (level 3)
- Soft feel and easily stretches to the hand shape
- Abrasion level 4 durability – high durability glove
- Optimum puncture and tear resistance
- Breathable absorbent glove coating
- Excels in dry environments

## uvex unidur 6659 foam

- Seamless flexible HPPE and glass fibre liner with cut level 5 protection
- Offers optimum safety for higher risk hazards
- Durable NBR foam protects against moisture
- Part of the uvex classic range of products. Economical pricing, budget sensitive and deliverable cost savings
- Palm coated with open back design. Excellent breathability and airflow
- Abrasion level 4. Highest level of durability for longer lasting glove suitable for challenging environments
- Ideal for multi-task handling for use in dry applications

<b>Product code</b>	60944	60210	60938
<b>Design</b>	uvex unipur 6631	uvex unidur 6641	uvex unidur 6659 foam
<b>Standard</b>	EN388:2016 (4141X)	EN388:2016 (4343B)	EN388:2016 (4X43C)
<b>Sizes</b>	6 to 11	6 to 11	6 to 11
<b>Coating</b>	palm and fingertips with polyurethane coating knitted cuff	palm and fingertips with polyurethane coating knitted cuff	palm and fingertips with nitrile foam coating knitted cuff
<b>Base glove</b>	polyamide	Dyneema® fibre, elastane	HPPE, glass, polyamide
<b>Suitable for</b>	dry/slightly damp areas of application	dry/slightly damp areas of application	dry/slightly damp areas of application





## uvex Bamboo TwinFlex® D xg planet



### Comfort

High and longlasting comfort on your skin due to bamboo-fibre. Adaptive Fit Technology: adapts to your hand shape in 3-5 minutes.



### Health

Dermatological approved, free of accelerators. Produced without using any solvents. 3 Dermatological skincare certifications.



### Long Lasting

Double abrasion resistance in thumb Protexxion Zone - 2 x EN388 level 4.  
5 x higher abrasion resistance in palm than EN388 Level 4.



### Protection/Touchscreen

High cut protection (cut D) and Touchscreen-ability. Contact heat resistance up to 100°C.



### Sustainability

Made from 45% recycled/sustainable yarn in our CO<sub>2</sub> neutral production facility in Germany. Sustainable paper band packaging.



**XG Xtra Grip**  
**clima zone**



**MADE IN GERMANY**



**protecting planet**

by using no harmful substances //  
by using biobased material //  
by using recycled material

## uvex Bamboo TwinFlex® D xg

- Thin and flexible 18 Gauge liner delivers high levels of cut protection thanks to the use of the finest steel fibres.
- Cut level D protection
- Patented Bamboo TwinFlex yarn technology ensures fast and high levels of moisture absorption (sweat) as well as delivering a smooth silky-soft feel against the skin
- A mix of 45% recycled and sustainable fibres: recycled polyamide and sustainable bamboo
- Adaptive fit: moulds precisely to the wearer's hand contours within minutes to achieve a customised, comfortable fit
- Highly sensitive – excellent levels of dexterity for precise handing without compromising safety
- Flexible coating with a highly effective grip
- Cost effective - long lasting and durable thanks to the uvex protexxion zone in the thumb crotch combined with premium quality Xtra-Grip coating technology

- Touchscreen compatible – no need to remove the glove between tasks
- Heat protection: protection against heat up to 100°C
- Dermatologically approved skin tolerability
- Free from harmful substances and allergenic accelerators

	uvex Bamboo TwinFlex® D xg
Art. no.	60090
Design	knitted cuff
Standard	EN 388 (4X41D), EN 407 (X1XXXX)
Size	6 to 12
Material	bamboo viscose, HPPE, steel, polyamide, elastane
Coating	Xtra-Grip Xtra polymer coating
Suitable for	dry and damp, oily areas
Colour	green, black





# Chemical Risks

Safety gloves with NBR coating



## uvex u-chem 3500

- Sensitive NBR broadband chemical protection glove (protection against 11 of 18 test chemicals). Material combination of nitrile and chloroprene protects against alcohols, aliphatic hydrocarbons, and concentrates acids and bases with a permeation time of  $\geq 120$  minutes.
- Protection against contact heat 100 °C (Level 1)
- Very good fit, very high wearing comfort thanks to seamless cotton liner

## uvex profastrong NF33

- Fully coated Nitrile chemical protection safety glove suitable for a wide range of applications
- Excellent oil protection and grip - ideal for handling oil coated metal surfaces, acids and grease
- Anatomically shaped for high levels of flexibility. Naturally and effortlessly stretches to the hand shape and movements
- Flocked cotton liner helps to absorb perspiration with a soft comfortable feel. Easy to take on and off
- Food sector approved. Multi-purpose use protects products including sensitive components and food

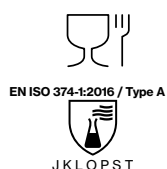
## uvex u-chem 3300

- Outstanding wearer comfort
- Comfortable bamboo-fiber inside
- Absorption function of the natural fiber
- Extremely high dexterity
- Outstanding tactile feel good resistance to many chemicals

<b>Product code</b>	60188	60122	60971
<b>Design</b>	uvex u-chem 3500	uvex profastrong NF33	uvex u-chem 3300
<b>Standard</b>	EN ISO 374-1:2016 / Type A (JKLMOT) EN 388 (3131X)	EN ISO 374-1:2016 / Type A (AJKLOT), EN388 (4101X) food standard approved	EN ISO 374-1:2016 / Type A (J K L O P T) EN388 (2121X)
<b>Sizes</b>	7 to 11	7 to 11	7 to 11
<b>Coating</b>	fully coated with Chloroprene and NBR approx. 0.40 mm	fully coated with special NBR coating (nitrile butadiene rubber), approx 0.38 mm	NBR (nitrile butadiene rubber), approx. 0.21 mm
<b>Base glove</b>	cotton (seamless)	flocked cotton	bamboo-rayon/nylon
<b>Suitable for</b>	good resistance to acetone, cleaning agents, adhesives, solvents	good resistance to oils, grease, acids and solvents	good resistance to grease, mineral oils and many chemicals

# Chemical Risks

## Disposable safety gloves



### uvex u-fit strong N2000

- Reinforced disposable glove made from nitrile rubber (0.20 mm)
- Protection against many chemicals
- Good grip
- Outstanding tactile feel
- Very high mechanical strength
- Silicone-free according to imprint test

<b>Product code</b>	60962
<b>Design</b>	uvex u-fit strong N2000
<b>Standard</b>	EN ISO 374-1:2016/Type A (J K L O P S T)
<b>Sizes</b>	S to XXL
<b>Coating</b>	NBR (nitrile butadiene rubber) textured surface of fingertips, approx. 28 cm
<b>Base glove</b>	no lining
<b>Suitable for</b>	good resistance to grease, mineral oils and many chemicals



### uvex u-fit

- High quality disposable gloves
- Ultra thin (8mm) thickness for absolute precision feel
- Good secure grip
- Silicone free according to imprint test
- Reliable splash protection for applications using chemicals such as some acids, alkalis, solids and aqueous saline solutions
- High resistance to oil and grease
- Roughened fingers for increased grip
- Accelerator free - an ideal choice for allergy sufferers
- Food standard approved

<b>Product code</b>	60596
<b>Design</b>	uvex u-fit
<b>Standard</b>	EN374 (Chemistry), EN455 (Medical)
<b>Sizes</b>	S to XL
<b>Coating</b>	NBR (nitrile butadiene rubber) glove surface roughened
<b>Base glove</b>	no lining
<b>Suitable for</b>	highly resistant to grease and oil



HexArmor®

# REVOLUTIONARY CUT, PUNCTURE, NEEDLESTICK PERFORMANCE

## Preventing life-changing injuries

HexArmor® products made with SuperFabric® brand material protect against the most dangerous hazards encountered on the job – blades, wire, metal, glass, and needles – preventing life-changing injuries and saving companies millions in expenses and downtime.

The configuration of tiny guard plates block and deflect hazards without sacrificing dexterity. Impacts come in all forms, shapes and sizes in the workplace and HexArmor's patented IR-X® Impact Exoskeleton™ is proved to reduce the number and effects of impact injuries.



Two brands with one global mission:

**protecting people**  
**HexArmor® + uvex**

 **SuperFabric®**

# HexArmor

Arc flash, impact, and cut protection



EN 407:2004



4 2 2 1 4 1

EN 388:2016



2 X 2 3 E



EN 388:2016



4 X 4 4 F P



EN 388:2016



4 X 4 4 F

REACH  
COMPLIANT

## HexArmor Chrome SLT®

- Arc Flash Level 4 Rating: Lab tested in accordance with HRC ATPV at 46 Cal/cm<sup>2</sup>
- EN407 tested for Burning Behavior Level 4, Contact Heat Level 2, Convective Heat Level 2, Radiant Heat Level 2, Small Splashes of Molten Metal Level 4, and Large Splashes of Molten Metal Level 1
- 360° cut resistance
- SlipFit® cuff assists a quick on and off between tasks
- Form-fitting, quality materials
- Goatskin leather palm provides a traditional style of comfort
- Grip in dry or light oil situations

## HexArmor Thin Lizzie 2095

- Knit: 13-gauge HPPE and glass blend shell provides 360° of cut protection
- Coating: PU palm coating provides superior grip and abrasion resistance
- Back-of-hand IR-X® Impact Exoskeleton™ with high-flex design keeps hands safe from smash and impact hazards; providing workers with ANSI/ISEA 138 Level 2 impact protection
- Reinforced thumb saddle
- Launderable

## HexArmor Helix® 2076

- Knit: 13-gauge HPPE and steel fiber blend shell offering 360° cut protection
- Coating: Flexible polyurethane palm coating provides superior grip and abrasion resistance
- ANSI/ISEA level A6 cut protection
- Elastic knit wrist helps prevent dirt and debris from entering the glove
- Seamless construction for enhanced comfort and breathability
- Reinforced thumb saddle for increased durability

<b>Product code</b>	60611	60650	60660
<b>Design</b>	HexArmor Chrome SLT® 4061	HexArmor Thin Lizzie 2095	HexArmor Helix® 2076
<b>Standard</b>	EN388 (2 X 2 3 E) EN407 (4 2 2 1 4 1)	EN388 (4 X 4 4 F P)	EN388 (4 X 4 4 F)
<b>Sizes</b>	6 to 13	5 to 12	5 to 13
<b>Coating</b>	Goatskin leather	Polyurethane palm coating	Polyurethane palm coating
<b>Base glove</b>	Aramid liner	13-gauge HPPE, steel, and fiberglass blend shell	13-gauge HPPE and steel fiber blend shell
<b>Suitable for</b>	Dry or light oil	Wet and dry	Wet and dry



# HexArmor

Cut and needlestick protection



EN 388:2016



4 X 4 2 D

**REACH**  
COMPLIANT



EN 388:2016



4 X 4 2 F



EN 388:2016



4 X 3 3 F

## HexArmor Helix® 2065

- Full flat nitrile coating offers 360° of water resistance and cut protection
- Seamless construction of 13-gauge HPPE, fiberglass, and nylon blend shell for enhanced comfort and breathability
- Flexible sandy nitrile palm coating provides superior grip and abrasion resistance while also offering dexterity and tactility
- Knit wrist helps prevent dirt and debris from entering the glove
- Launderable for extended life

## HexArmor PointGuard® Ultra 4041

- Highest needlestick and cut resistance available provided by the layering of SuperFabric® brand material on noted enhanced areas, ANSI/ISEA Cut Level A9 and Needlestick Level 5
- Tested using actual 25-gauge needles against ANSI/ISEA 105 standard
- Back-of-hand knuckle padding for incidental bumps & impacts
- Neoprene cuff with Velcro® closure
- Silicone pattern palm grip for enhanced durability and grip
- Launderable

## HexArmor ThornArmor® 3092

- Three layers of SuperFabric® brand material in the palm providing ANSI/ISEA Level A9 cut protection
- Reinforced index finger wrap extending the puncture-resistant area
- Breathable HexVent® panel on the back-of-hand helps keep you cool
- Durable TP-X® palm provides superior grip and abrasion resistance
- Airprene cuff with Velcro® closure to keep debris out
- ANSI/ISEA Level 5 needlestick protection
- Launderable

<b>Product code</b>	60659	60004	60010
<b>Design</b>	HexArmor Helix® 2065	HexArmor PointGuard® Ultra 4041	HexArmor ThornArmor® 3092
<b>Standard</b>	EN388 (4 X 4 2 D)	EN388 (4 X 4 2 F)	EN388 (4 X 3 3 F)
<b>Sizes</b>	5 to 12	6 to 12	5 to 12
<b>Coating</b>	Full flat nitrile coating	Silicone pattern palm grip	TP-X® palm
<b>Base glove</b>	13-gauge HPPE and fiberglass shell	Layering of SuperFabric® brand material	Layering of SuperFabric® brand material
<b>Suitable for</b>	Dry, oil, or we	Dry or light oil	Dry or light oil

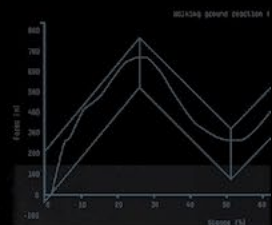




Safety Footwear



# uvex 1 G2 – Science. Not Fiction.



Water vapour permeability

**40x**

better than the minimum requirement of EN ISO 20345

Water vapour coefficient

**17x**

better than the minimum requirement of EN ISO 20345

Abrasion with uvex x-tended grip

**66%**

less abrasion than standard

With double load

**33%**

less abrasion than standard

Water penetration

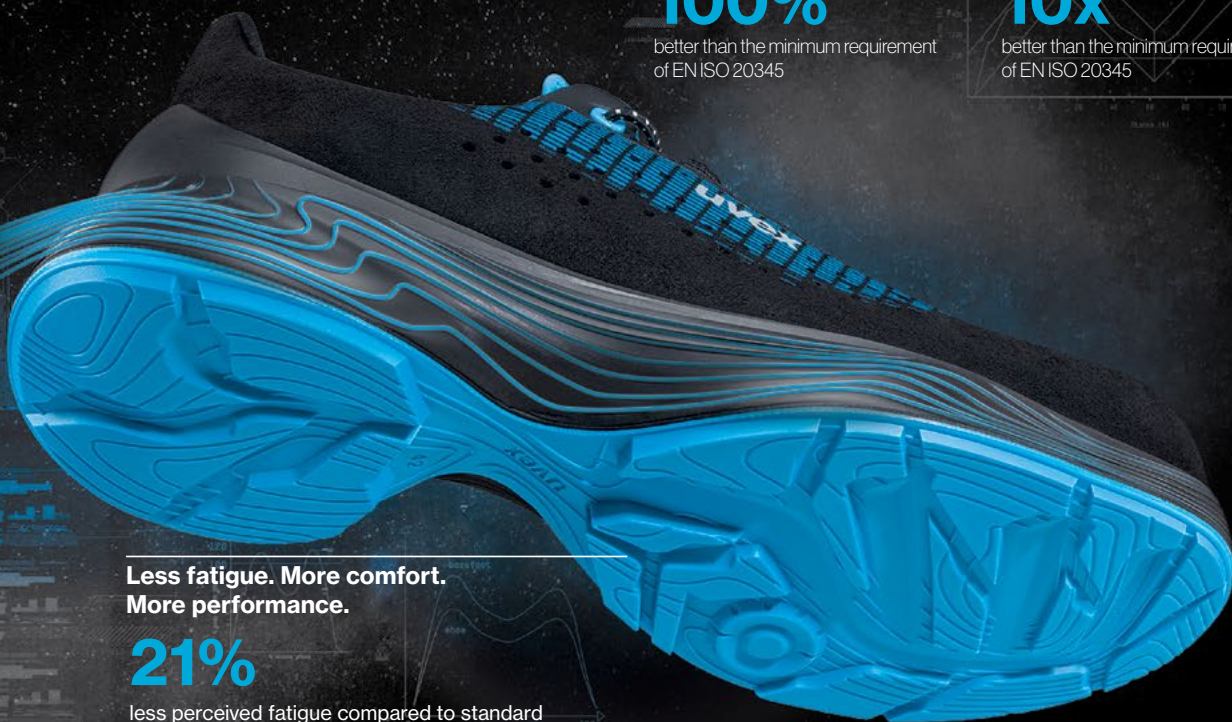
**100%**

better than the minimum requirement of EN ISO 20345

Water absorption

**10x**

better than the minimum requirement of EN ISO 20345

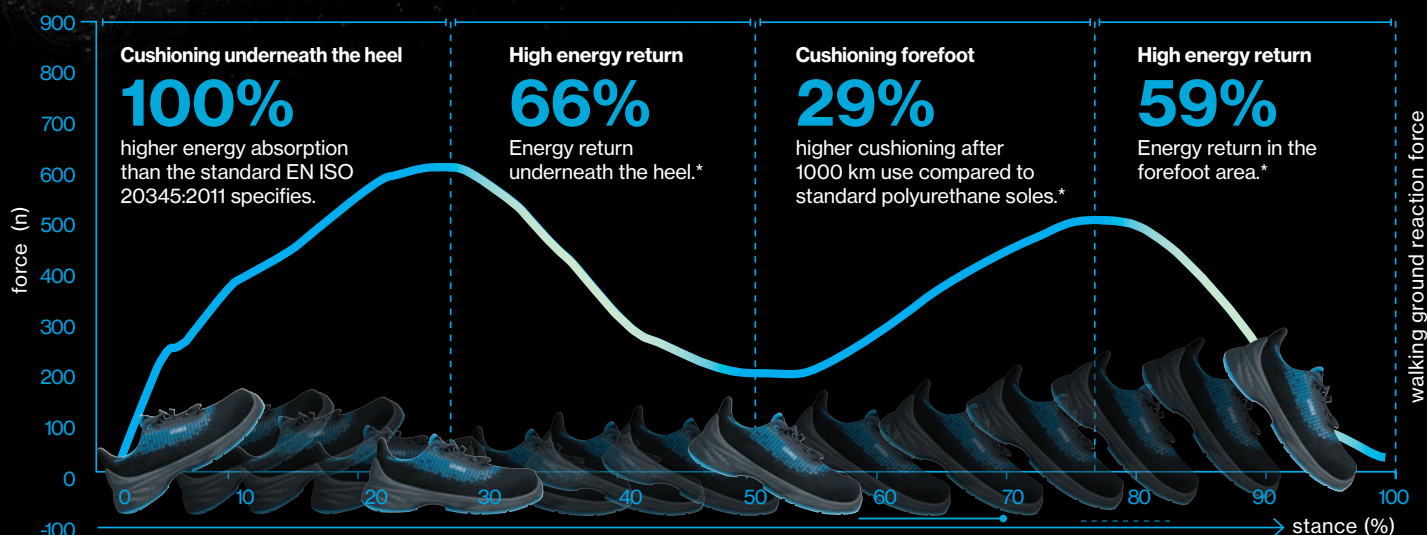


Less fatigue. More comfort.  
More performance.

**21%**

less perceived fatigue compared to standard polyurethane soles - uvex i-PUREnrj technology

## uvex i-PUREnrj Technology - Cushioning. Stability. Energy Return.



# Safety Footwear

uvex 1 G2



protecting planet

by using bio-based material //  
by using recycled material //  
by maximum reduction of pollutants



68242

clima zone



## uvex 1 G2 planet

- Sizes 3 to 6.5 are made using a ladies last
- uvex x-dry knit planet textile material made from 100% recycled PET bottles
- Individually adjustable elastic laces for quick release
- uvex i-PUREnrj sole technology with the highest level of shock-absorbing properties at the forefoot and at the heel, excellent rebound over the entire midsole
- uvex x-tended grip planet TPU outer sole with up to 10% recycled PU waste from our production processes
- Non-metallic midsole made from 100% recycled material
- TPU scuff cap made from 40% recycled material
- Breathable lining made from 18% bamboo and 52% recycled polyester

### uvex 1 G2 trainer

Product code	68342
Standard	EN ISO 20345:2011 S1 P SRC. ESD rated
Size	35 to 52 (3 to 16)



68382



68392

clima zone



## uvex 1 G2

- Sizes 3 to 6.5 are made using a ladies last
- Lightweight safety shoe with microvelour upper
- uvex i-PUREnrj sole technology with the highest level of shock-absorbing properties at the forefoot and at the heel, excellent rebound over the entire midsole
- Ergonomically designed TPU outsole with uvex x-tended grip - highly durable and offers excellent slip resistance
- Removable antistatic comfort insole

### uvex 1 G2 trainer

Product code	68382
Standard	EN ISO 20345:2011 S3 SRC. ESD rated
Size	35 to 52 (3 to 16)

### uvex 1 G2 Boot

Product code	68392
Standard	EN ISO 20345:2011 S3 SRC. ESD rated
Size	35 to 52 (3 to 16)



68298



68318

clima zone



## uvex 1 G2

- Sizes 3 to 6.5 are made using a ladies last
- Lightweight safety shoe with perforated microvelour upper
- uvex i-PUREnrj sole technology with the highest level of shock-absorbing properties at the forefoot and at the heel, excellent rebound over the entire midsole
- Ergonomically designed TPU outsole with uvex x-tended grip - highly durable and offers excellent slip resistance
- Removable antistatic comfort insole

### uvex 1 trainer

Product code	68298
Standard	EN ISO 20345:2011 S1 SRC. ESD rated
Size	35 to 52 (3 to 16)

### uvex 1 Boot

Product code	68318
Standard	EN ISO 20345:2011 S1 SRC. ESD rated
Size	35 to 52 (3 to 16)



# Safety Footwear

uvex 1

## Next Level Equipment



### Outstanding flexibility. Optimum wearer comfort.

The ergonomic design of the outsole supports the natural movement and flexibility of the feet.

High abrasion-resistant TPU sections ensure secure stepping and rolling of the foot, which helps prevent accidents.

Ideal shape around the joints for optimal torsion and good flexibility.

Self-cleaning tread optimised for slip resistance (SRC marking).



Jointed insert for securely climbing ladders.

Pivot point reduces pressure on joints when twisting and turning.



### 100% more shock absorption. Comfort in 3 dimensions.

The uvex 1 multilayer shock absorption system comprising a double-layered uvex 1 PU outsole and comfort insole with optimum shock absorption in the heel and the front of the foot helps protect the musculoskeletal system. The energy absorption in the heel is twice that required by EN ISO 20345. Pure walking comfort.



### Outstanding stability. Reliable support and safety.

Consistent stability is essential for secure, sure-footedness and accident-free working. The visible external heel basket which is integrated into the sole ensures stability and offers additional side impact protection. The 'x-tended' support model offers additional sideways support and enhanced protection against ankle twisting and impact. Both sole versions securely enclose the foot, without limiting flexibility.



### uvex monoskin shaft design. Pressure-free, comfortable fit.

The completely metal-free uvex monoskin upper shaft made from high-tech microfibre ensures outstanding wearer comfort without pressure points and the virtually seamless construction offers extended product life.



### uvex climazone standard. Temperature and climate control.

Large perforations, ultra breathable high-tech-micro velour upper and distance mesh lining material together with a comfortable insole with moisture control system prevents the build-up of heat and reduces sweat.

# Safety Footwear

uvex 1



85618

85628

clima zone



## uvex 1 ladies

- Designed specifically for the contours of the female foot
- Metal-free
- Made from synthetic materials
- Made using a special last based on the contours of the female foot for a perfect fit
- Removable comfort insole, antistatic and additional shock absorption in the heel and at the front of the foot
- Multiple fit system available. Increase or decrease inner shoe dimensions for a better fit

### uvex 1 ladies Shoe perforated

Product code	85618
Standard	EN ISO 20345:2011 S1 SRC. ESD rated
Size	35 to 43 (3 to 9)

### uvex 1 ladies Shoe

Product code	85628
Standard	EN ISO 20345:2011 S2 SRC. ESD rated
Size	35 to 43 (3 to 9)



85448

85458

clima zone



## uvex 1 - unisex

- Sizes 3 to 6.5 are made using a ladies last
- Metal-free
- Breathable, water-resistant high-tech micro velour upper
- Made from synthetic materials
- Removable comfort insole, antistatic and additional shock absorption in the heel and at the front of the foot
- Multiple fit system available. Increase or decrease inner shoe dimensions for a better fit

### uvex 1 Shoe

Product code	85448
Standard	EN ISO 20345:2011 S2 SRC. ESD rated
Size	35 to 50 (3 to 15)

### uvex 1 Boot

Product code	85458
Standard	EN ISO 20345:2011 S2 SRC. ESD rated
Size	35 to 50 (3 to 15)



**uvex**

Safety Footwear  
uvex 2 construction

# The essential allrounder



## uvex 2 construction

- Water-repellent leather with uvex waterstop technology
- Dirt-resistant and heat-resistant lacing system
- Penetration-resistant steel midsole
- Moulded polyurethane heel basket for stability and protection against ankle twisting
- 100% metal-free toe cap
- Foamed polyurethane scuffcap helps increase the product life of the upper material covering the toe cap
- Ergonomically designed outsole made from dual-density polyurethane with a rough, self-cleaning tread
- Secure grip when climbing on ladders due to the stabilising arch support
- Removable anti-static comfortable insole with a moisture transport system and additional shock
- All sole materials are free of silicone, plasticisers and other substances that interfere with wetting agents
- Free from harmful substances according to our restricted substances list



65122

uvex 2 construction	
Product code	65122
Standard	EN ISO 20345:2011 S3 SRC
Size	35 to 52 (3 to 16)

**clima zone**



### uvex waterstop technology

uvex waterstop technology reliably protects against water penetration for four times longer than required by the standard.



### Stability and ankle protection

The anatomically shaped heel basket provides stability and protection against twisted ankles, especially on uneven surfaces.



### Increased visibility

Reflective side strips provide optimal visibility and safety, especially in poorly lit working environments.



### Safe slip resistance

The rough, self-cleaning tread ensures perfect grip without slipping, even on ladders or smooth surfaces.

# Safety Footwear

uvex 2



65022



65032



## Durable PU toe cap

The PU scuffcap ensures reliable protection of the upper and prevents wear and tear in kneeling activities.



## High-quality upper material

Optimised interior temperature, robust upper material made from easy-care hi-tech smooth, top quality leather protect the feet in the most demanding situations.

## uvex 2 shoe 6502 S3 SRC uvex 2 lace-up boot 6503 S3 SRC

- Sporty, multifunctional safety footwear with puncture resistant sole
- Extremely lightweight and flexible
- 100% metal-free uvex xenova® toe cap: compact design, anatomical shape, good side stability, no thermal conductivity and antimagnetic properties
- Penetration-resistant, non-metallic midsole does not restrict flexibility
- uvex climazone technology helps regulate shoe temperature for optimum wearer comfort Distance mesh liner provides optimum breathability
- Removable comfortable insole, antistatic, c/w moisture control system. Increases shock absorption, reduces fatigue and potential musculoskeletal ailments
- Outstanding dual density polyurethane sole: best shock absorption properties, superb slip resistance, free of lacquer wetting inhibitors e.g. silicones, phthalates, etc.
- Fulfils ESD requirements: resistance to ground < 35 megaohm
- PU sole withstands brief exposure to heat up to 120° C
- Sizes 35-40 (3-6.5) designed specifically for the contours of the female foot

uvex 2 Shoe	
Product code	65022
Standard	EN ISO 20345:2011 S3 SRC. ESD rated
Size	35 to 52 (3 to 16)

uvex 2 Boot	
Product code	65032
Standard	EN ISO 20345:2011 S3 SRC. ESD rated
Size	35 to 52 (3 to 16)



**clima zone**





# RUN-R RANGE

Lightweight, stylish and comfortable

## EASY LOCK



## METAL FREE



**01**  
**TPU film**

Abrasion resistant TPU sections to the upper extends product life and durability.

**02**  
**Double density PU sole**

Antistatic, SRC rated, resistant to oils, hydrocarbons & chemicals.

**03**  
**Metal free toe cap + midsole**

Light weight with no thermal conductivity. Flexible midsole covers 100% of the foot bed.

**04**  
**Climate managent**

3D mesh lining for excellent breathability and quick drying.

**05**  
**Textile upper**

Light weight and breathable microfibre upper.

**06**  
**Easy lock system**

The RUN-R 100 has the easy lock speed lace system.

# Heckel RUN-R®

Performance with style



62583

## RUN-R® 100 shoe

Light weight safety trainer. PU2D sole with microfibres and TPU film upper. 3D polyester mesh lining. Metal free toe cap and puncture resistant midsole. 100% metal free.

	Heckel RUN-R 100
<b>Product code</b>	62583
<b>Standard</b>	EN ISO 20345: 2011 S1P SRC
<b>Sizes</b>	4 to 13



62593

## RUN-R® 200 shoe

Light weight safety trainer. PU2D sole with Microfibre and TPU film upper. 3D polyester mesh lining and metal free toe cap and puncture resistant midsole. 100% metal free.

	Heckel RUN-R 200
<b>Product code</b>	62593
<b>Standard</b>	EN ISO 20345: 2011 S1P SRC
<b>Sizes</b>	4 to 13



62653

## RUN-R® 400 shoe

Light weight safety trainer. PU2D sole with leather upper. 3D polyester mesh lining and metal free toe cap and puncture resistant midsole. 100% metal free.

	Heckel RUN-R 400
<b>Product code</b>	62613
<b>Standard</b>	EN ISO 20345: 2011 S3 SRC
<b>Sizes</b>	4 to 13



## Customised footwear fitting for increased comfort

### Arch support insoles uvex tune-up

Designed to increase wearer comfort by providing optimum support for the arches of the feet, helping to reduce foot fatigue. Certified for use in uvex 1 and uvex 2 safety footwear.

- Very good cushioning for comfort underfoot
- Prevents pressure points
- Breathable fabric that absorbs moisture
- Antibacterial and antistatic
- Suitable for ESD footwear
- Machine washable at 30°C (delicate wash cycle)



#### Arch support insoles



Art. no. 95281  
Sizes: 3 to 16



Art. no. 95282  
Sizes: 3 to 16

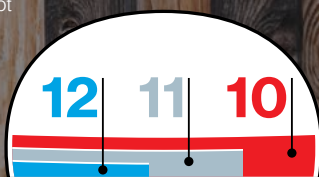


Art. no. 95283  
Sizes: 3 to 16

### Customised width fitting uvex multiple fit system

The insole changes the dimensions inside the footwear. Width10 is a thicker insole, reducing space inside the footwear for a narrower fit. Width 12 is a thinner insole increasing space inside the shoe for a wider fit.

- Full surface shock absorption
- Helps minimise potential back, knee and joint problems
- Draws sweat away from the foot
- Dries quickly



#### Customised width fitting insoles

Width fitting 10 for a **narrower** fit



Art. no. 95347  
Sizes: 3 to 15

Width fitting 11 for a **standard** fit



Art. no. 95348  
Sizes: 3 to 15

Width fitting 12 for a **wider** fit



Art. no. 95349  
Sizes: 3 to 15



#### uvex size advisor app

When choosing safety footwear, it is important to purchase the correct size in order to benefit fully from their protective function and ensure lasting wearer comfort. With the uvex size advisor app you can determine the right uvex shoe size and width to ensure the perfect fit.





Hearing Protection



# Hearing protection

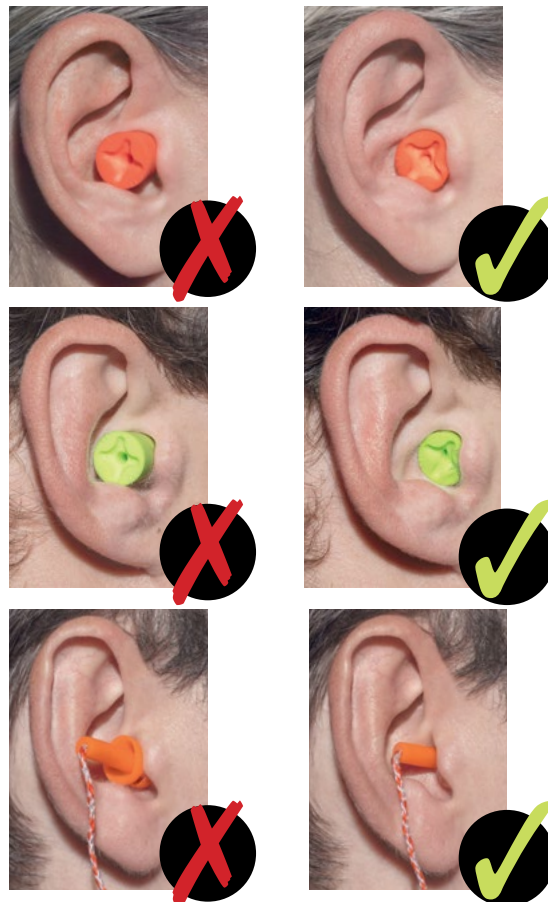
## Size and fit

Everyone's ear canal is unique – much like a fingerprint. Which is why it's all the more important that you choose adequate and suitable hearing protection that is the correct size to achieve a good fit. uvex offers a complete range of hearing protection to ensure all wearers are able to achieve a fit that's right for them.

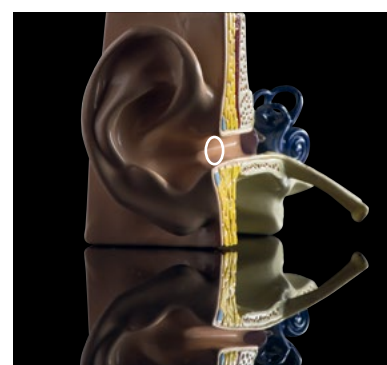
**Choosing the wrong size can severely reduce the protection value, exposing wearers to harmful noise, and makes the ear plugs uncomfortable to wear.**

- if the earplugs are too large, they are unlikely to sit deep enough in the ear canal, so the specified protection level cannot be achieved. They'll also feel uncomfortable
- if the earplugs are too small, although they may be comfortable to wear, there could be noise leakage and reduced protection capacity which over time can cause noise-induced hearing loss.
- round earplugs don't necessarily completely seal an oval-shaped ear canal. It is on this premise that we developed the uvex xact-fit range of hearing protectors.

**It is best to try different sizes to find the one that gives you the best protection and fit. With the uvex com4-fit and uvex x-fit, we offer something for the majority of ear canal shapes.**



Look out for the different sizes



Anyone can get used to wearing hearing protection; you just need to choose the right type of protection for you.

- wearing time
- noise levels
- choose earplugs according to the size of your ear canal
- earmuffs are not recommended for hot workplaces
- fitting accuracy (glasses wearers)
- for earmuff wearers, the weight should be taken into consideration
- handling (dirty hands, gloves, disabilities)
- compatibility with other PPE (helmet, glasses, respiratory protection)

**The right hearing protection can make even the loudest noises more comfortable.**

# Hearing Protection

## Disposable hearing protection plugs



### uvex xact-fit

- The easiest plug to fit giving accurate fitting every time
- Tapered plug shape fits natural shape of the ear canal for easy, comfortable secure fitting
- Ergonomic stem marked left and right with thumb indentations for easy fitting ensuring consistently accurate insertion and optimum protection
- Adjustable neck cord can be altered to wearers requirements for increased safety
- Low pressure, sealed PU foam reduces the potential for contamination for increased hygiene
- Replacement pods help prolong the life of the product and reduce waste

Corded earplugs	
<b>Product code</b>	2124001
<b>SNR</b>	26 dB
<b>Box</b>	1 box of 50 pairs (paired in mini box)

Replacement pods	
<b>Product code</b>	2124002
<b>SNR</b>	26 dB
<b>Box</b>	1 box of 250 pairs (5 prs per mini box)

### uvex xact-fit reusable S

Can be easily cleaned using mild soap and water. Suitable for a wide range of environments. Size small (see page 42).

uvex xact-fit reusable s	
<b>Product code</b>	2124017 (plastic earplug box)
<b>Product code</b>	2124019 (card minibox)
<b>SNR</b>	26 dB



### uvex hi-com

- Disposable foam ear plug with low attenuation reduces the risk of over protection and feelings of isolation
- Unique shape is designed to fit the natural shape of the ear canal helping to reduce pressure for greater comfort
- Large surface area delivers softer acoustics and absorbs inner ear sounds which can become obvious when wearing hearing protection in quieter areas
- The hollow nose and base gives low and flat attenuation allowing for excellent speech and sound recognition
- Lime coloured for high visibility

Uncorded earplugs	
<b>Product code</b>	2112100
<b>SNR</b>	24 dB
<b>Box</b>	1 box of 200 pairs (bagged in pairs)

Mini dispenser ideal for toolboxes and vans - uncorded	
<b>Product code</b>	2112104
<b>SNR</b>	24 dB
<b>Box</b>	1 box of 50 pairs

Corded earplugs	
<b>Product code</b>	2112101
<b>SNR</b>	24 dB
<b>Box</b>	1 box of 100 pairs (bagged in pairs)



### uvex com4-fit

- Tapered shape that fits the natural shape of the ear canal. Easy, comfortable, secure fitting
- X emboss helps reduce pressure on the ear canal as there is less material. Also aids easy and hygienic removal after use
- Smaller size suitable for smaller ear canals or those new to earplugs
- Low pressure sealed PU foam, reduces the potential for contamination and gently expands to fit the size and shape of the ear canal
- Compatible with other items of PPE

Uncorded earplugs	
<b>Product code</b>	2112004
<b>SNR</b>	33 dB
<b>Box</b>	1 box of 200 pairs (bagged in pairs)

Corded earplugs	
<b>Product code</b>	2112012
<b>SNR</b>	33 dB
<b>Box</b>	1 box of 100 pairs (bagged in pairs)





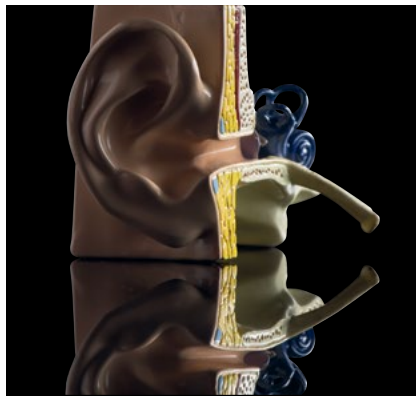
# Hearing protection

The uvex xact-fit family

## Using earplugs has never been easier

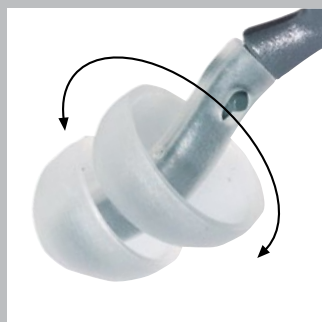
The unique design of the uvex xact-fit is based on the anatomy of the ear canal, mimicking the natural oval shape.

This allows fast, easy and accurate insertion while reducing pressure inside the ear – even when worn for extended periods.



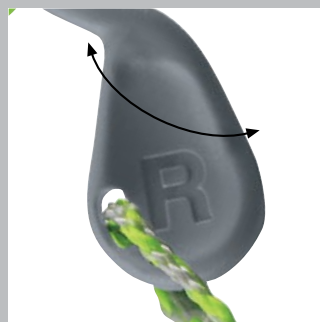
The cross-section of an ear canal is oval shaped

**MADE IN SWEDEN** 



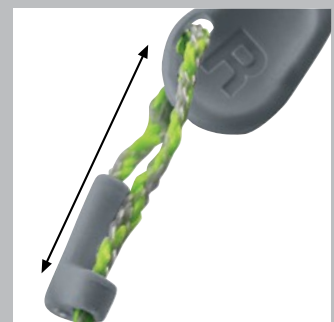
### Perfect fit

Oval-shaped earplugs mimic the natural shape of the ear canal for a low pressure fit and enhanced comfort, with no rolling required.



### Ergonomic thumb indentations

The stem is shaped to fit either the left or right ear as indicated. Ensures correct insertion and optimum fit, providing intended and required protection.



### Adjustable cord

Thanks to an adjustable cord the earplugs can be worn comfortably around the neck so they're always conveniently to hand.



Breathing Protection



# uvex silv-Air c

Protection class FFP3 filtering face masks

**FFP3**



Product code 8733310  
uvex silv-Air c 3310

## uvex silv-Air c FFP3 filtering folding face mask

- The innovative ori-nasal design of the nose bridge and the soft seal contours to any facial shape
- Soft material edges for greater comfort
- Exhalation valve for easy airflow exchange which reduces the build-up of heat and moisture inside the mask
- Adjustable nose clip to ensure an excellent individual fit
- Mask fulfils the requirements of the dolomite dust test
- Compatible with uvex safety eyewear
- The soft foam sealing lip reduces the risk of leakage and promotes a proper fit

## uvex silv-Air c FFP3 filtering pre-formed face mask

- The innovative ori-nasal design of the nose bridge and the soft seal contours to any facial shape
- Soft material edges for greater comfort
- 4-point headband for a comfortable, secure fit
- Exhalation valve for easy airflow exchange which reduces the build-up of heat and moisture inside the mask
- Adjustable nose clip to ensure an excellent individual fit
- Mask fulfils the requirements of the dolomite dust test
- Compatible with uvex safety eyewear
- Soft all-round sealing lip for a secure fit and high level of wearer comfort



Product code 8732310  
uvex silv-Air c 2310

The looped headband system is easy to adjust and offers a high level of wearer comfort.

The 4-point headband allows the mask to be adjusted to the wearer, giving an individual comfortable and secure fit.

The adjustable nose clip ensures an excellent individual fit and secure positioning.

The ultra thin membrane ensures very low breathing resistance and an improved climate inside the mask.

The concealed and adjustable nose clip ensures an excellent individual fit.

The soft material edges prevent uncomfortable pressure points.

The complete all-round sealing lip improves both the positioning and comfort.

## uvex silv-Air c

Protection class FFP3 filtering face masks



FFP3

### uvex silv-Air c 3310

- Particle-filtering folding mask with exhalation valve
- Adjustable headband and flexible, adjustable nose clip for a comfortable, secure fit
- Comfortable, all-around sealing lip for secure fit
- Exhalation valve to further reduce breathing resistance, by helping to minimise moisture build up inside the mask

uvex silv-Air c 3310	
Product code	8763310
Version	FFP3 NR D folding mask with valve
Colour	white
Order quantity	15 PC
Content	15 PC, individually packed in BOX



FFP3

### uvex silv-Air c 2310

- Particle-filtering preformed mask with exhalation valve for **larger face shapes**
- Four-point headband attachment and flexible, adjustable nose clip for a comfortable, secure fit
- Very soft, all-around sealing lip for optimal wearer comfort and secure fit
- Exhalation valve to further reduce breathing resistance, by helping to minimise moisture build up inside the mask

uvex silv-Air c 2310	
Product code	8762310
Version	FFP3 NR D preformed mask with valve – large version
Colour	white
Order quantity	15 PC
Content	15 PC, packed in BOX



FFP3

### uvex silv-Air c 2312

- Particle-filtering preformed mask with exhalation valve – ergonomically adapted for **smaller to medium-sized face shapes**
- Four-point headband attachment and flexible, adjustable nose clip for a comfortable, secure fit
- Very soft, all-around sealing lip for optimal wearer comfort and secure fit
- Exhalation valve to further reduce breathing resistance, by helping to minimise moisture build up inside the mask

uvex silv-Air c 2312	
Product code	8762312
Version	FFP3 NR D preformed mask with valve – small version
Colour	white
Order quantity	15 PC
Content	15 PC, packed in BOX



# uvex



For more information about any of the products in the uvex range or to be put into contact with your local uvex representative, call the Customer Services Team on the numbers below:

**Jo Breeds**

Customer Services  
Manager  
01252 731205

**Sue Renshaw**

Customer Services  
Administrator  
01252 731204

**Louise Caston**

Customer Services  
Administrator  
01252 731201

**Sandra Bekhite**

Customer Services  
Administrator  
01252 731206

**Fiona Keen**

Customer Services  
Administrator  
01252 731209

UVEX SAFETY (UK) LTD  
uvex House  
Farnham Trading Estate  
Farnham  
Surrey  
England  
GU9 9NW

Tel: 01252 731200  
[safety@uvex.co.uk](mailto:safety@uvex.co.uk)  
[uvex-safety.co.uk](http://uvex-safety.co.uk)

protecting people