



uvex

uvex 2 trend

Affordable quality and comfort

protecting people

uvex-safety.co.uk

uvex 2 trend

Affordable quality and comfort

Whether working in the assembly hall or on the production line, indoors or outdoors, the uvex 2 trend safety footwear range is suitable for medium applications and incorporates numerous proven technologies at an affordable price.

The uvex anti-twist heel cap provides increased stability to prevent ankle twisting. The high-quality outsole materials, sports influenced design and bold colours make this footwear appealing to wear. The result is maximum comfort and reliable safety.

Modern and versatile

Comfort features:

- uvex climazone technology continuously maintains internal climate: highly breathable lining and upper, and comfortable climatic insole with moisture transport system
- Removable antistatic comfortable insole provides additional shock absorption around the heel and forefoot and wicks moisture away from the foot for improved comfort and hygiene

General features:

- Sole tread contains flex lines that support natural rolling motion of the foot without restricting movement
- Pivot point reduces pressure on joints during twisting motions. Deep studs / wide channels disperse surface debris
- Foamed scuffcap helps protect upper particularly when kneeling

Protection features:

- Meets the ESD specifications with volume resistance under 35 megaohms
- Reliable protection: penetration-resistant steel midsole (S3 models only), steel toe cap and stabilising uvex anti-twist heel cap increases stability without restricting movement
- Ergonomically designed lightweight, non-marking and self-cleaning outsole made from dual density polyurethane - excellent slip resistance (SRC rated)
- Reflective elements enhances visibility of the wearer

Areas of application:

- Medium applications



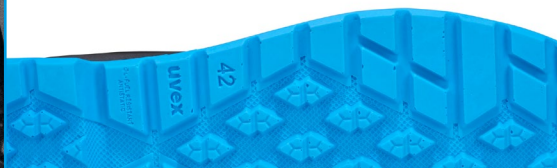


First-class wearer comfort

The midsole line supports the foot arch, making the safety footwear especially comfortable to wear.

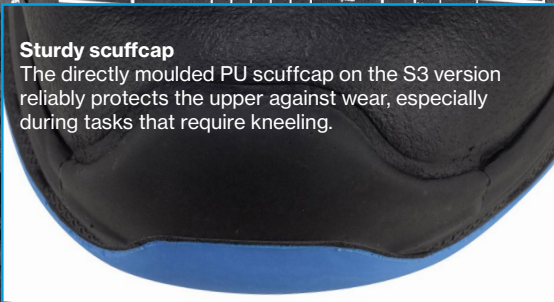
Safe slip resistance

The ergonomic design of the outsole supports the natural rolling motion of the foot. The new outsole profile offers the best grip on almost any surface.



Sturdy scuffcap

The directly moulded PU scuffcap on the S3 version reliably protects the upper against wear, especially during tasks that require kneeling.



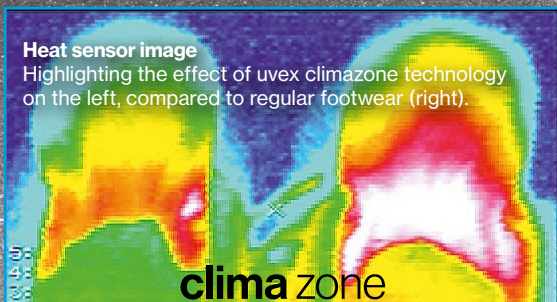
Reliable protection against twisting

The innovative uvex anti-twist heel cap offers increased stability to reduce the risk of sprains.



Heat sensor image

Highlighting the effect of uvex climazone technology on the left, compared to regular footwear (right).



uvex multiple fit system

allows footwear to be adapted by changing the insole creating a different fit for enhanced comfort.

For more information contact your local uvex representative.

uvex 2 trend

Affordable quality and comfort

uvex 2 trend leather shoe

Product code	69342
Standard	EN ISO 20345:2011 S3 SRC. ESD rated
Standard	EN ISO 20345:2022 S3P FO SR ESD rated
Upper	Water-repellent, full-grain smooth leather
Colour	Blue, black, french blue
Sizes	5 to 16

Scuff cap protects leather upper for prolonged product life.



uvex 2 trend leather boot

Product code	69352
Standard	EN ISO 20345:2011 S3 SRC. ESD rated
Standard	EN ISO 20345:2022 S3P FO SR ESD rated
Upper	Water-repellent, full-grain smooth leather
Colour	Blue, black, french blue
Sizes	5 to 16

Scuff cap protects leather upper for prolonged product life.



uvex multiple fit system allows footwear to be adapted by changing the insole creating a different fit for enhanced comfort. For more information contact your local uvex representative.

UVEX SAFETY (UK) LTD
uvex House
Farnham Trading Estate
Farnham
Surrey
England
GU9 9NW

Tel: 01252 731200
safety@uvex.co.uk
uvex-safety.co.uk