

uvex

 **HECKEL**
PERFORMANCE WITH STYLE

OFF THE
BEATEN TRACK



MACSOLE[®]
ADVENTURE 3.0



HECKEL MACCROSSROAD 3.0 AND MACCROSSROAD 3.0 META

Developed to meet the specific challenges of the construction and engineering industries, where workers and their footwear face extreme weather conditions and high mechanical stress.

The water-resistant leather construction and latest technologies ensure wearers are reliably protected while remaining comfortable and with the ability to maintain a high level of performance. Experience durability and excellent levels of grip thanks to our exclusive MACSOLE® sole, rubber scuff cap and Agile Ankle Guard support system, making it the most versatile range bar none.

All the footwear styles contain the technologies described on the following pages with the Heckel MACCROSSROAD 3.0 META benefitting from additional D30® metatarsal protection as described on pages 8-9.



MULTIPURPOSE

Experience durability and excellent levels of grip, the MACSOLE® rubber soles are extremely versatile. They are suitable for those working in construction, public sector, local authority, environmental services, public infrastructure, engineering, energy, transport and the chemical industry.



ANTI-SLIP

Our exclusive Heckel MACSOLE® rubber formula offers unrivalled grip, far exceeding the requirements of EN 13287.



MACCROSSROAD 3.0 HIGH

ART. NO. 67313 | EN 20345 : 2022
S3L FO CI HI HRO SC SR | SIZES 36 - 48 [3.5 to 13]



MACCROSSROAD 3.0 META

ART. NO. 67353 | EN 20345 : 2022
S3L FO M CI HI HRO SC SR | SIZES 36 - 48 [3.5 to 13]



COMFORT

The natural elasticity of rubber ensures long-lasting shock absorption. MACSOLE® footwear helps to lower the risk of accidents by reducing fatigue caused by prolonged walking or standing.



SOLE

Since 2001, we have been developing our rubber sole technology: MACSOLE®. This technology allows us to establish ourselves as a true benchmark in safety footwear for extreme conditions.

COMFORT & A

FLEXIBLE & LOW WEIGHT

1 NONMETALLIC PROTECTIVE ELEMENTS

Nonmetallic penetration-resistant midsole offering unlimited freedom of movement, especially when kneeling | nonmetallic protective toe cap 20% lighter than a conventional steel toe cap.

2 FULL GRAIN LEATHER UPPER

Very flexible with foam padded collar for better comfort around the ankle.

3 3D MESH LINING

Better ventilation helping to maintain good hygiene and well-being.

4 HYGIENIC INSOLE

Forefoot and heel shock absorbers | very high moisture absorption capacity.

5 REDUCED WEIGHT

Reducing strain on the body and preventing premature fatigue.



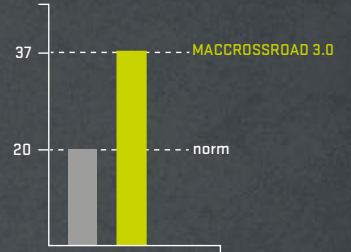
ANTI-FATIGUE

ENERGY ABSORPTION

85%

higher energy absorption than that specified by EN ISO 20345 standard.

Joule [J] energy absorption



Shock absorbing EVA insert in heel

Shock absorbing EVA insert in forefoot

MACABSORB TECHNOLOGY

A NEW DEFINITION OF MACSOLE® PERFORMANCE

The new models in the MACSOLE® ADVENTURE 3.0 range combine the natural elasticity properties of rubber with the new MACABSORB technology: EVA foam inserts are placed at the forefoot and heel for a better shock absorption superior to the requirements of the standard, significantly improving wearing comfort and reducing fatigue in the feet.



Shock absorbing EVA in heel and forefoot helps improve comfort and reduce fatigue.

DESIGNED FOR



PROTECTION & DURABILITY



RUBBER SCUFF CAP

Directly integrated into the outsole offering high abrasion resistance | extends product life by protecting the upper | suitable for those working in a crouching or kneeling position.



AGILE ANKLE GUARD

Better supports the foot and heel | limits the risk of sprains.



THE OUTDOORS

OPTIMUM GRIP ON ALL SURFACES

MACSOLE[®] ADVENTURE 3.0 rubber sole

SRC | resistance to **oils & hydrocarbons**,
chemicals | resistance to contact heat
up to 300°C (HRO standard) | **antistatic**

French (EU) sizing system **width 11**



Self-cleaning profile: better slip
resistance in difficult conditions

GRIPSTEP profile for extra grip
when climbing on ladders and stairs

Wide ground-bearing surface

Ergonomic lines following
natural movement of the foot

Deep tread with sharp edges
designed for grip on rough
terrain

Defined heel for
outdoor environments

According to flexing resistance test
defined by standard EN ISO 20344: 8,
the sole performance does not suffer
any deterioration over use

MACSOLE[®]
ADVENTURE 3.0

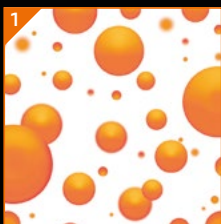


METATARSAL

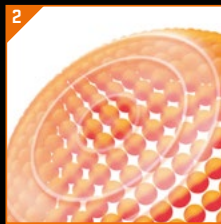


HOW DOES D30® TECHNOLOGY WORK?

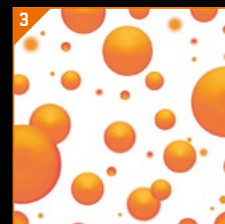
D30® is a flexible, cellular material made of "floating" molecules. In its raw state, the material is very flexible. However, upon impact, these molecules have the capacity to bind together and instantly (in less than 10 milliseconds) transform into a solid to absorb and dissipate the generated energy. This reaction is not only immediate but also proportional to the force of impact. The greater the impact, the more the molecules will react, providing the best possible protection. After the impact, the molecules will return to their free-flowing state.



1
Ultra-flexible material



2
Absorbs and dissipates impact energy



3
Returns to flexible state

PROTECTION

D30[®]

**METATARSAL
PROTECTION**

PATENTED TECHNOLOGY

D30[®] uses patented and exclusive technologies made from non-Newtonian fluid to manufacture flexible materials with impact absorption.

D30[®] offers an ergonomic solution guaranteeing safe metatarsal protection against impacts, without restricting freedom of movement and ensuring high levels of comfort.

ENHANCED COMFORT AND SAFETY

**PROTECTION FULLY
INTEGRATED INTO
THE TONGUE**

SOFT AND FLEXIBLE:

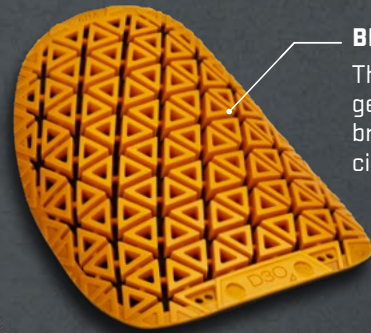
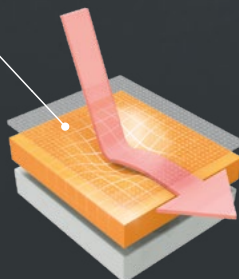
The protective component moulds to the shape of the foot, giving the wearer complete freedom of movement. Traditional solutions offering metatarsal protection have a metal plate to protect the metatarsal area, which limits flexibility and makes the safety footwear heavy.

THIN AND LIGHTWEIGHT:

Does not contribute to the overall weight of the safety footwear.

**IMPACT RESISTANT
TO 100 JOULES:**

Additional requirement according to EN ISO 20345 standard. Equivalent to a weight of 20 kg falling from a height of 50 cm.



BREATHABILITY

The segmented geometrics offer breathability and air circulation.



MACCROSSROAD 3.0 META

ART. NO. 67353

EASY, FAST AND PRECISE ADJUSTMENT

Delivering fit solutions purpose-built for performance, the BOA® Fit System has revolutionised traditional lacing. Initially developed the world of sport, BOA® develops multiple closure systems for safety footwear tailored to different environments and applications, providing a secure fit and increased safety for all professionals.

MICRO-ADJUSTABLE DIAL
that adjusts fit with precision
click by click

**LIGHTWEIGHT,
SUPER-STRONG LACE**
expertly configured for comfort
and performance



THE BOA[®] FIT SYSTEM

HOW IT WORKS



Push in to **engage**



Turn to **tighten**



Pull up for quick **release**

LOW-FRICTION GUIDES FOR LACE

ensuring a smooth closure,
every time

THE BOA[®] BENEFITS

PERSONALISED

Make effortless micro-adjustments, even while you work, and stay fully focused on your tasks.

CONNECTED

By offering you a micro-adjustable fit, BOA[®] allows you to be one with your equipment for improved dexterity, responsiveness and control.

FAST

The BOA[®] Fit System allows you to get your gear on and off fast and easily.

RESISTANT

Engineered with ultradurable materials, the BOA[®] Fit System is extensively tested in the harshest conditions. Dials and laces are designed to reduce contamination by shedding ice, dirt, oil and other elements.

FIT FOR LIFE WITH BOA[®]

The Boa[®] Fit System dials and laces are guaranteed for the lifetime of the product on which they are integrated.

BOA[®] is a registered trademark of Boa Technology Inc.

MACSOLE[®] ADVENTURE 3.0



MACCROSSROAD 3.0 LOW

ART. NO. 67323
 EN 20345: 2011 S3 CI HI HRO SRC
 EN 20345: 2022 S3L FO CI HI HRO SC SR
 SIZES 36 - 48 (3.5 to 13)



MACCROSSROAD 3.0 HIGH

ART. NO. 67313
 EN 20345: 2011 S3 CI HI HRO SRC
 EN 20345: 2022 S3L FO CI HI HRO SC SR
 SIZES 36 - 48 (3.5 to 13)



MACCROSSROAD 3.0 META

ART. NO. 67353
 EN 20345: 2011 S3 M CI HI HRO SRC
 EN 20345: 2022 S3L FO M CI HI HRO SC SR
 SIZES 36 - 48 (3.5 to 13)



MACCROSSROAD 3.0 HIGH

ART. NO. 67303
 EN 20345: 2011 S3 CI HI HRO SRC
 EN 20345: 2022 S3L FO CI HI HRO SC SR
 SIZES 36 - 48 (3.5 to 13)



MACCROSSROAD 3.0 LOW BOA

ART. NO. 67373
 EN 20345: 2011 S3 CI HI HRO SRC
 EN 20345: 2022 S3L FO CI HI HRO SC SR
 SIZES 36 - 48 (3.5 to 13)



MACCROSSROAD 3.0 S3 HIGH BOA

ART. NO. 67363
 EN 20345: 2011 S3 CI HI HRO SRC
 EN 20345: 2022 S3L FO CI HI HRO SC SR
 SIZES 36 - 48 (3.5 to 13)

UVEX SAFETY (UK) LTD
 uvex House
 Farnham Trading Estate
 Farnham
 Surrey
 England
 GU9 9NW

uvex-safety.co.uk

