

uvex



Prescription Safety Eyewear

2022

protecting people

uvex Wearability

The key to compliance

uvex WEARABILITY

The key to choosing prescription safety eyewear



uvex prescription safety spectacles are individually adapted to the wearer's vision while offering the best possible protection in the workplace. We call this wearability. But what do we mean by that?

Wearability = Compliance. It is PPE that doesn't get in the way, allowing you to focus on the task at hand. Ultimately, it's the perfect balance of four main factors:



FIT

One size does not fit all

It may seem obvious, but properly-fitting eyewear that has been selected for the individual, their workplace and takes into account compatibility with other PPE can help avoid accidents, reduce discomfort, increase productivity and give wearers confidence.



COMFORT

With proper fit comes comfort

Safety eyewear not only protects against mechanical hazards (workplace debris and contaminants), it should be free of pressure points, lightweight, breathable and not slip.

It's only when PPE fits well and is comfortable that it remains worn throughout the day.



PERFORMANCE

Industry leading technology

Our in-house expertise together with our UK based lens manufacturer, means we can provide the highest-quality prescription eyewear together with optional extras - such as lens tints and performance enhancing lens coating technology for a fundamentally different wearer experience.



STYLE

We all want to look good

Prescription safety eyewear that is high performing, comfortable and stylish means employees will not only want to wear their designated safety eyewear, but receive the same level of protection as colleagues, and protect their personal glasses from becoming damaged at work.

uvex Wearability

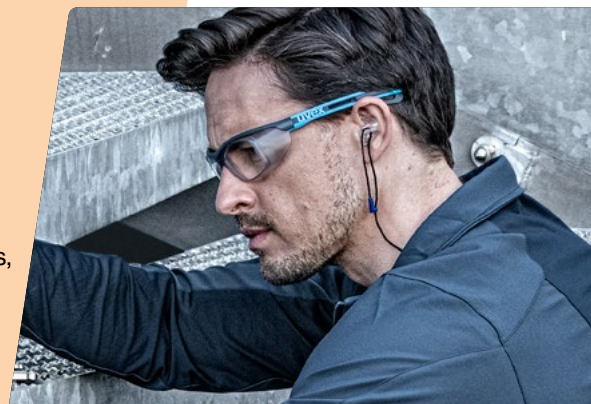
The key to compliance

FIT

Find a frame that fits you best

uvex prescription safety spectacles are individually adapted to the wearer's vision while offering the best possible protection in the workplace. Head and facial shapes all differ requiring a range of prescription safety eyewear from which employees can select.

Adaptable features, such as nose bridges, extendable side arms and tight-fit kits, allow wearers to achieve the ultimate close fit (to keep hazards out) and find a position that means they can work comfortably, confidently and with as little distraction as possible.



COMFORT

Innovative features for comfortable protection

Decades of experience and innovative technologies form the basis for uvex products, which are manufactured in accordance with the most stringent safety standards. In addition to safety, uvex also guarantees maximum comfort and quality. Protective equipment that fits properly not only offers reliable protection, it is also more likely to be comfortable and therefore, worn by the employee.

Eyewear should deliver a low-pressure, lightweight fit with even weight distribution. Thanks to uvex's German-engineered dual-injection mould technology, we're able to combine soft and hard components into frames that flex; making them comfortable and durable, while also ensuring eyewear stays put.



PERFORMANCE

Product safety and performance

uvex prescription safety spectacles are certified and marked in accordance with EN 166, so they can be used in workplaces where safety spectacles are mandatory. As occupational safety spectacles, they not only protect the eyes (from UV radiation, flying particles, dust etc.), but are also a visual aid because the lenses have a dioptric effect.

The comprehensive uvex quality system guarantees the best design from an optical and processing technology perspective. All materials used (lenses, frames, cases etc.) are free from harmful substances and are regularly inspected.



STYLE

Style meets comfort and safety meets design

We all want to look and feel good, even at work. When 'wearability' is designed into safety eyewear, employees are more likely to keep it where it should be, on their face and in front of their eyes. It is possible for employees to have high-performing, comfortable, properly fitted specs or goggles that keeps dust and debris out, in a style and design to ensure there is something for everyone.

The wide range of uvex styles and designs of safety eyewear allows you to find the product that most suits you.



uvex Prescription

Individual personal protective equipment from uvex

**ONE BRAND.
ONE VISION.
ONE MISSION.**



OUR MISSION

#protecting people

The uvex brand mission. This is our objective and our responsibility. uvex protects people – when working, playing sport and pursuing leisure activities.

Decades of experience enable us to transfer expertise continuously between the sectors of industrial safety and top-level sport, and provides the foundation on which we are able to continuously develop our products.

It allows us to create innovations and solutions based on advanced technologies that reliably protect people – whether they are on a production line, on the ski slopes or on a mountain bike.

OUR FUTURE

Sustainable actions and social responsibility

If you rely on uvex, you are guaranteed sustainable actions. From environmental protection to social commitment: uvex puts corporate responsibility at the forefront of its daily business.

The focus of our commitment is to protect people:

- sustainable product concept
- avoidance of the use of hazardous substances beyond the requirements of the REACH regulation (the uvex banned hazardous substances list)
- uvex social standard for all manufacturing plants
- social commitment (e.g. Rainer Winter Foundation, Vision for the World)

CLAIM TO QUALITY

'Made in uvex'

Decades of experience and innovative technologies form the basis for products that are manufactured in accordance with the most stringent safety standards.

Our individual personal protective equipment ensures that maximum levels of safety and comfort are provided.

Our innovations set new standards in quality and technology by combining excellent wearing comfort, attractive design and sophisticated functionality.

Our motto 'Made in uvex' guarantees a comprehensive quality system and the best possible processing technology. All materials used are free from harmful substances and are regularly inspected.

uvex places great importance on a sustainable production concept with first-class products and an in-house value creation chain, with a focus on production facilities in Germany and Europe. What's more, uvex offers maximum service with maximum flexibility.

Contents

The vital companion for prescription safety spectacles

uvex prescription eyewear

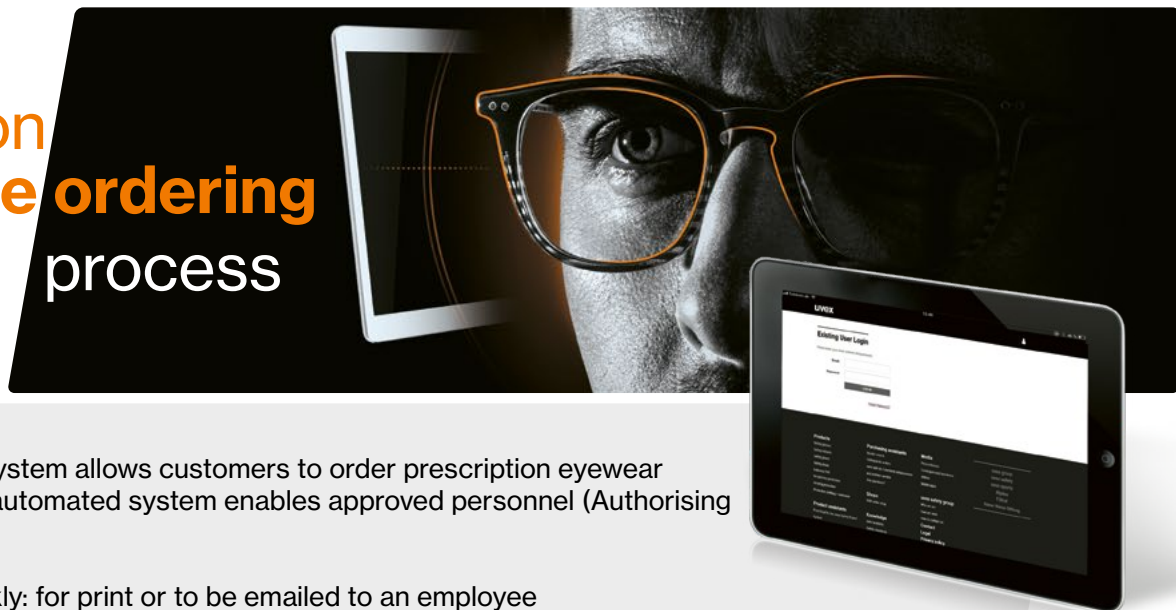


uvex Wearability	Page 2-3
uvex brand	Page 4
Contents	Page 5
uvex online ordering process	Page 6-7
Anti-reflective coating	Page 8
Lenses and finishes	Page 9
Optifog	Page 10
uvex anti-fog cloth	Page 11
uvex prescription safety frames	Page 12
uvex basic collection metal prescription safety frames	Page 13-14
uvex basic collection plastic prescription safety frames	Page 15
uvex RX cd collection	Page 16-19
uvex RX sp collection	Page 20-21
uvex prescription safety inserts	Page 22
uvex i-3 add safety spectacles	Page 23
uvex prescription office/VDU spectacles	Page 24-26
uvex prescription self-contained breathing apparatus eyewear	Page 27
Certification and markings	Page 28-29
Lens prescription strength options	Page 30-37
Multiple form request	Page 38

Online Ordering Process

Easier, faster and more seamless

Prescription online ordering process



uvex's online ordering system allows customers to order prescription eyewear quickly and easily. The automated system enables approved personnel (Authorising Officers) to:

- Generate a form quickly: for print or to be emailed to an employee
- Create and track the status of new prescription orders as they move through the manufacturing process: from when the Authorising Officer generates the form through to the order being despatched to the optician and finally invoiced
- Review historical orders and run user reports

The Optician's Portal

This is a great advantage to the flow and speed of the order process and will give employees a better experience when they visit the optician.

If an employee chooses a frame or a lens type which is not on your pre-approved list for selection, the optician can advise the employee straightaway. The employee will then have a choice to either choose something from the pre-approved list or to continue with the order.

If they choose the latter, uvex will seek approval as necessary. Orders will be placed on hold until approval is granted.

Once registered your Optician will be able to:



See the approved frames for your employees



Review and complete all fields to ensure timely processing



Submitted orders will go straight into production. Delays will only occur if there is a query with the order e.g. obtaining approval for non-standard items



Check the status of the order at any point once in production and advise the employee accordingly



Another advantage of the optician's portal is that uvex will be able to pay the optician for the dispensing and sight test fees by BACS payment, saving administration time and providing increased traceability.



For more information about the uvex prescription online ordering process, please visit uvex-safety.co.uk/prescription.

To speak to a member of our prescription team call 01252 725552 or email help-prescription@uvex.co.uk.

Prescription safety spectacles

Frequently Asked Questions

Frequently Asked Questions (Wearers)

01

How do I get my spectacles?

Go to your Authorising Officer/Line Manager who will generate an online order or pre-printed form and sign it. Then take this form to your chosen optician who will carry out an eye test and order your spectacles.

02

Which optician do I go to?

Your company may have chosen a designated optician to which you must go, this may well be printed on the form under "optician name". Your authorising officer will know and inform you if this is the case. If a designated optician has not been specified, then you can visit any optician of your choice. However, frames may not be available to try on.

03

How do I choose a frame?

Your company may have specified certain frames that they will allow you to wear. These will be on the form under "approved frames". If this is not the case, the complete range can be seen in this brochure from which your choice can be made. If a designated optician has been chosen, then sample frames will be available to try on.

04

What happens if the frame isn't at the opticians to try on?

Your optician can call uvex to order a sample frame. When this arrives, your optician will inform you that it has done so and will arrange a further appointment for you to try on the frame.

05

What if I have recently had an eye test?

If you have your current eye prescription details you can take these to the optician along with the uvex form and the optician will complete the form with your details and order the spectacles as normal.

06

Do I have pay for my eye test and claim it back from my company?

Provided your company pays for your eye test, uvex can arrange to pay the optician on your behalf and then invoice your company. This way, no money changes hands at the optician.

Frequently Asked Questions (Authorising officers)

01

How does my company's preferred optician access the portal?

The opticians portal is a free elective service that an optician can quickly register for. Vision Express has transitioned on to the system with all stores going live in January 2019.

For example, Vision Express utilises the system in most of its stores, which helps order efficiency.

02

How can my company obtain uvex forms?

Forms are generated online or uvex can provide them free of charge with relevant information preprinted to ease the process. The Authorising Officer should complete the inside back cover of this brochure, scan and email or fax it back to uvex and we will do the rest. The more information your company can provide, the smoother the process will work.

03

What is the benefit of a designated optician?

uvex will provide your designated optician with the appropriate frames, allowing employees to try them on for style and fitting purposes. Frames need to be measured on the individual's face in order to achieve ocular precision. In addition, fees can be agreed providing consistent invoice levels.

04

How can my company set up a designated optician?

Often the company Safety Officer or Occupational Health Nurse will make arrangements with a local optician. Alternatively a uvex representative can arrange this for you.

05

Will the optician know what to do with the uvex form?

The form is quite straightforward and has all the required information on it. Generally there are no issues. However, if there are any queries, a phone call to our prescription department on 01252 725552, should solve any problems.

06

How long will the glasses take to manufacture?

From the date of entering your details on to our computer we average between 7 and 10 working days before the spectacles are completed.

Hard anti-reflective Coating

What are the benefits?

More than 80% of spectacle wearers experience unwanted reflections when indoors and outdoors

- We live in an environment with more and more light of different types, artificial light as well as natural light create annoying reflections
- Our future is filled with technologies which will make our lives even brighter....leading to a world full of reflections

Glare caused by bright lights in poorly lit environments can be just as uncomfortable for a wearer as reflections caused by bright light.

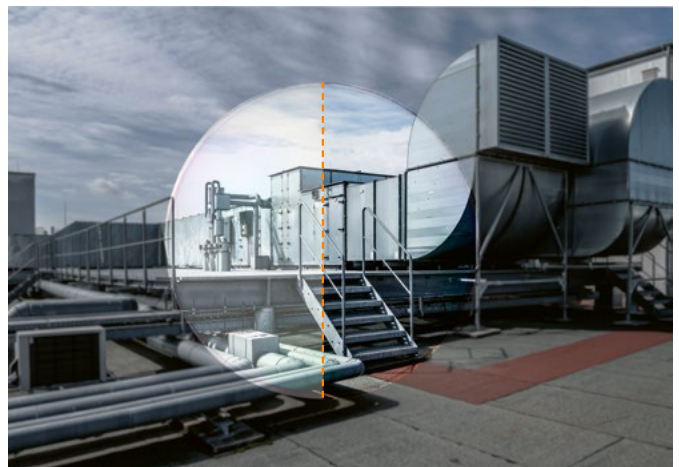
Typical situations that wearers experience reflections are:

- When working under harsh indoor LED lighting,
- Using a screen in a dimly lit office,
- Reading indoors under harsh artificial light
- When facing headlights of oncoming traffic,
- When a light source is over the wearers shoulder hitting the back surface of the lens
- When using digital displays

Example of reflections on a spectacle lens



- Reducing the reflections on a lens improves both vision and aesthetics.
- Standard lens material reflects around 8% of light, and polycarbonate material reflects approximately 10% of light.
- Enhancing the lens with an anti-reflective coating reduces reflections and increases the amount of light transmitted – resulting in clearer, sharper, crisper vision.



Benefits of the anti-reflective lens treatment



Better transmission of visual information



Reduction of ghost images



Decrease of unwanted reflections



- Better Visual Clarity
- Improved Contrast
- Better Visual Comfort
- Reduced Eye Strain
- Increased UV Protection
- Reduced glare at night time (poorly lit environments)

Prescription safety spectacles

Lenses and finishes

Lenses

Polycarbonate

- Mechanical strength 'F' (45 m/sec)
- Only partially chemical-resistant
- PC: Identification code: 2C-1.2 as per EN 170

CR39, modified (plastic)

- Mechanical strength 'S' (ball drop test)
- Lightweight organic material suitable for chemicals and painting
- Good scratch-resistance due to hard coating



Coatings

Scratch-resistant coating

To guarantee an ideal surface hardness, all our plastic lenses are given a hard coating.



Lens Tints

Tint

Tinted lenses provide effective protection against glare in areas with high light intensity (for example, sunlight)

Constant tinting

- Available in brown and grey
- Tinting levels: 82% (light), 38% (medium), 15% (dark)

Variable tinting – Transitions

- Lenses tint automatically, depending on the UV radiation and temperature
- Tinting of between approx. 8% and 80% in brown
- Available with polycarbonate lens



uvex

Anti-fog Solutions

Essilor Optifog

Without

With Optifog

Optifog Benefits ✓



Fog repellence

Stays fog free even in extreme conditions*



Scratch resistant

Ensuring clear vision, guaranteed for 2 years



UV protection

Protects your eyes from UVA and UVB rays



Glare reduction

Less reflections for clarity of vision and improved aesthetics



Dust repellent

Repels dust particles for clearer vision and easy to clean lenses

*Internal laboratory test in extreme conditions: in cold conditions from 0 C to 23 C and in hot conditions, at 52 C for 15 seconds.

OPTiFOG®

The long-lasting anti-fog solution

Optifog's unique anti-fog system combines two patented technologies: Optifog lens treatment and a smart textile cloth with anti-fog molecules that activates the power of the Optifog lens. The Optifog lens treatment means both the front and back surfaces of the lens have integrated anti-fog technology. Simply wipe your lenses with the smart cloth and droplets that would usually obstruct your vision spread uniformly across the lens, in an invisible and fog-free layer.

How does it work?

Every day: Clean your Optifog lenses using the Optifog Smart Textile that comes with your new lenses.

Every 2 weeks: Wash your Optifog lenses with water. To avoid contamination, it is recommended to wash your glasses every time they get dirty or after they have potentially been exposed to infected agents.

Every 3 months (or after 450 activations): Renew your Optifog Smart Textile.

Before handling the Optifog Smart textile, it is recommended to wash your hands and spectacles to avoid any contamination.



Anti-fog Solutions

uvex anti-fog cloth

uvex ANTI-FOG CLOTH

The affordable anti-fog solution



Without

With uvex antifog cloth

The uvex antifog cloth provides an ideal solution for those who wish to benefit from uvex's anti-fog technology as and when they need it. Simply wipe the cloth over your lenses and an ultra-thin layer of uvex's unique anti-fog formula is applied to the lens preventing them from misting up, resulting in streak-free, clear vision for hours.

The uvex antifog cloth can be used on any lens: prescription glasses, sunglasses, industrial and sports visors, goggles or screens, and is ideal for mask wearers. The uvex antifog cloths are individually wrapped and can be carried in a handbag, toolkit or in the glovebox so you can administer anti-fog protection whenever it's needed.

For best results, we recommend to follow the instructions of use:



- Clean the glasses beforehand
- Simply wipe both sides of the lens with the uvex antifog cloth using 5-10 circular motions
- Cleaning your glasses with a standard lens cloth will affect the anti-fog performance and will need reapplying



60x

- **Cost effective** - reusable up to 60 times
- **Long-lasting** - 8 to 10 hours of anti-fog performance depending on environmental factors
- **Easy to store** - in zip bag provided, ideal for a pocket, bag or tool box



- **Less waste** - minimises waste compared to single use alternatives
- **Reusable** - once its finished its lifecycle you can use it as a general cleaning cloth

Prescription safety spectacles

Individual eye protection from uvex

**MADE FOR
YOUR EYES**
MADE IN **UVEX**



uvex prescription safety spectacles are individually adapted to the wearer's vision while offering the best possible protection in the workplace.

The spectacles are certified and marked in accordance with EN 166, so they can be used in workplaces where safety spectacles are mandatory. As occupational safety spectacles, they not only protect the eyes (from UV radiation, flying particles, dust etc.), but are also a visual aid because the lenses have a dioptric effect.

uvex offers a wide range of high-quality lens materials, focus types and frames. This makes it easier to switch between personal spectacles and employer-provided safety spectacles, which increases wearer acceptance.

The comprehensive uvex quality system guarantees the best design from an optical and processing technology perspective. All materials used (lenses, frames, cases etc.) are free from harmful substances and are regularly inspected.

The collection

uvex offers a variety of frames for prescription safety spectacles, see pages 13-23.

uvex RX Basic collection in metal



- In different shapes, sizes and colours
Pages 13-14

uvex RX Basic collection in plastic



- In different shapes and sizes
Page 15

uvex RX cd



- Safety spectacles in sporty designs
Pages 16-19

uvex RX sp



- Safety spectacles in a wrap-around design
Pages 20-21

uvex prescription inserts



- Goggle inserts for individual prescriptions
Page 22

uvex i-3 add



- Invisible integrated dioptric correction for near vision
Page 23

Prescription safety spectacles

Basic collection metal frames



6109101

uvex RX 5102

- Fashionable, aviator-style metal frame
- Transparent side shields
- Anatomically adjustable nose bridge and ear-pieces ensure an exceptional fit
- For prescription availability, please refer the options shown on pages 30 and 31

uvex RX 5102	
Product Code	6109101
Ref. no.	5102 1400 53/20
Frame eye size	53 mm
Bridge width	20 mm
Colour	gunmetal, matt
Marking on frame	W 166 FT CE



6109109

uvex RX 5106

- Classic design metal frame
- Transparent side shields
- Anatomically adjustable nose bridge and ear-pieces ensure an exceptional fit
- For prescription availability, please refer the options shown on pages 30 and 31

uvex RX 5106	
Product Code	6109109
Ref. no.	5106 1400 52/20
Frame eye size	52 mm
Bridge width	20 mm
Colour	gunmetal, matt
Marking on frame	W 166 FT CE



6109113

uvex RX 5108

- Slim, expressive metal frame
- Transparent side shields
- Anatomically adjustable nose bridge and ear-pieces ensure an exceptional fit
- For prescription availability, please refer the options shown on pages 30 and 31

uvex RX 5108	
Product Code	6109113
Ref. no.	5108 3400 56/19
Frame eye size	56 mm
Bridge width	19 mm
Colour	steel blue
Marking on frame	W 166 FT CE



6109103

uvex RX 5101

- Classic design metal frame with double bridge
- Side shields made of wire mesh for good air circulation
- Anatomically adjustable nose pads
- Arms with sprung hinges and easily adjustable earpieces
- For prescription availability, please refer the options shown on pages 30 and 31

uvex RX 5101	
Product Code	6109103
Ref. no.	5101 1018 56/17
Frame eye size	56 mm
Bridge width	17 mm
Colour	black, silver
Marking on frame	W 166 FT CE

Prescription safety spectacles

Basic collection metal frames



6109114

uvex RX 5109

- Modern, rounded metal frame
- Transparent side shields
- Anatomically adjustable nose pads and ear-pieces ensure an exceptional fit
- For prescription availability, please refer the options shown on pages 30 and 31

uvex RX 5109	
Product Code	6109114
Ref. no.	5109 6100 50/19
Frame eye size	50 mm
Bridge width	19 mm
Colour	gold
Marking on frame	W 166 FT CE



6109115

uvex RX 5110

- Classic, square metal frame
- Transparent side shields
- Anatomically adjustable nose pads and ear-pieces ensure an exceptional fit
- For prescription availability, please refer the options shown on pages 30 and 31

uvex RX 5110	
Product Code	6109115
Ref. no.	5110 1300 55/17
Frame eye size	55 mm
Bridge width	17 mm
Colour	anthracite
Marking on frame	W 166 FT CE



6109116

uvex RX 5111

- Large metal frame in a retro design featuring a double bridge
- Transparent side shields
- Anatomically adjustable nose pads and ear-pieces ensure an exceptional fit
- For prescription availability, please refer the options shown on pages 30 and 31

uvex RX 5111	
Product Code	6109116
Ref. no.	5111 1800 57/19
Frame eye size	57 mm
Bridge width	19 mm
Colour	silver
Marking on frame	W 166 FT CE

Prescription safety spectacles

Basic collection plastic frames



6108215

uvex RX 5502

- Close-fitting plastic frames
- Side shields and integrated brow guard frame design
- Specially shaped frames provide protection against particles from below
- Good fit with anatomically shaped nose bridge
- Individually adjustable side arms with four different lengths and adjustable soft-form comfort ear pieces
- For prescription availability, please refer the options shown on pages 30 and 31

uvex RX 5502	
Product Code	6108215
Ref. no.	5502 1725 56/15
Frame eye size	56 mm
Bridge width	15 mm
Colour	grey
Marking on frame	W 166 F CE



6109210

uvex RX 5506

- Comfortable plastic frame
- Side shields and integrated brow guard frame design
- Good fit with anatomically shaped nose bridge
- For prescription availability, please refer the options shown on pages 30 and 31

uvex RX 5506	
Product Code	6109210
Ref. no.	5506 1725 56/18
Frame eye size	56 mm
Bridge width	18 mm
Colour	light grey, translucent
Marking on frame	W 166 F CE

Prescription safety spectacles

uvex RX cd



6109234



6109230



6109231

uvex RX cd 5518

- Sporty frame design: attractive and durable
- Metal-free
- Comfortable soft arms (uvex duo component technology), non-slip fit without pressure points
- Good fit thanks to anatomically shaped nose bridge
- For prescription availability, please refer the options shown on pages 32 and 33

uvex RX cd 5518			
Product Code	6109230*	6109231*	6109234*
Ref. no.	5518 1341 54/22	5518 5074 54/22	5518 1333 54/22
Frame eye size	54 mm	54 mm	54 mm
Bridge width	22 mm	22 mm	22 mm
Colour	anthracite, red	dark brown, green	anthracite, blue
Marking on frame	W 166 F CE	W 166 F CE	W 166 F CE



6109236



6109246

uvex RX cd 5520

- Contemporary plastic frame in stylish colours
- Good fit thanks to anatomically shaped nose bridge
- Translucent lens frame for an unobstructed field of view
- uvex Comfort Sliders allow the side arm length and inclination to be adjusted for a customised fit
- The spectacles can also be worn without uvex Comfort Sliders
- Completely metal-free
- For prescription availability, please refer the options shown on pages 32 and 33

uvex RX cd 5520		
Product Code	6109236*	6109246*
Ref. no.	5520 1333 54/18	5520 1344 54/18
Frame eye size	54 mm	54 mm
Bridge width	18 mm	18 mm
Colour	anthracite, blue	anthracite, pink
Marking on frame	W 166 F CE	W 166 F CE

Prescription safety spectacles

uvex RX cd



6109249



Reflective uvex logo

uvex RX cd 5521

- Stylish plastic frame with reflective uvex logo
- Transparent lens frame for an unrestricted field of view
- Good fit thanks to anatomically shaped nose bridge
- Sporty arms made from a combination of soft and hard components to ensure increased comfort and non-slip fit
- For prescription availability, please refer the options shown on pages 32 and 33

uvex RX cd 5521	
Product Code	6109249*
Ref. no.	5521 1813 54/22
Frame eye size	54 mm
Bridge width	22 mm
Colour	silver, anthracite
Marking on frame	W 166 F CE



6109225



6109226

uvex RX cd 5514

- Close-fitting plastic frame
- Transparent side shields and integrated brow guard frame design
- Soft, adjustable nose bridge
- Easily adjustable soft-form comfort ear pieces
- For prescription availability, please refer the options shown on pages 32 and 33

uvex RX cd 5514		
Product Code	6109225*	6109226*
Ref. no.	5514 1033 53/18	5514 1045 55/18
Frame eye size	53 mm	55 mm
Bridge width	18 mm	18 mm
Colour	black, blue	black, red
Marking on frame	W 166 F CE	W 166 F CE

Prescription safety spectacles
uvex RX cd



6109250 assembled with uvex tight-fit-kit



6109250



uvex RX cd 5522

- Modern plastic frame in a robust design
- Translucent frame colour for an unobstructed field of vision
- Air vents at the top and side
- Soft, adjustable nose bridge
- Sporty arms made from a combination of soft and hard components to ensure increased comfort and non-slip fit
- Soft, adjustable ear-pieces with metal core
- Supplied with uvex tight-fit-kit consisting of headband and foam seal (protection against liquid droplets – marking 3, in accordance with EN 166)
- For prescription availability, please refer the options shown on pages 32 and 33

uvex RX cd 5522	
Product Code	6109250
Ref. no.	5522 2533 58/15
Frame eye size	58 mm
Bridge width	15 mm
Colour	translucent grey, blue
Marking on frame	W 166 F CE

Prescription safety spectacles

uvex RX cd



6109227



6109228



6109229

uvex RX cd 5515

- Close-fitting plastic frame
- Side shields and integrated brow guard frame design
- Soft, adjustable nose bridge
- Easily adjustable soft-form comfort ear pieces
- For prescription availability, please refer the options shown on pages 32 and 33

uvex RX cd 5515			
Product Code	6109227	6109228*	6109229*
Ref. no.	5515 1347 51/17	5515 1371 53/17	5515 1342 57/17
Frame eye size	51 mm	53 mm	57 mm
Bridge width	17 mm	17 mm	17 mm
Colour	anthracite, coral	anthracite, petrol	anthracite, dark red
Marking on frame	W 166 F CE	W 166 F CE	W 166 F CE


6109208
6109209


uvex RX cd 5505 with uvex RX cd seal

uvex RX cd 5505

- Close-fitting plastic frames
- Integrated side shields and brow guard for an exceptionally close fit
- Specially shaped frames provide protection against particles from below
- Good fit with anatomically shaped nose bridge
- Individually adjustable side arm length and angle for a customised fit and adjustable soft-form comfort ear pieces
- Comes with foam seal frame for use when working with dust, chips or fluids. Complies with EN 166 "Protection against liquid droplets and splashes" (category "3")
- For prescription availability, please refer the options shown on pages 32 and 33

uvex RX cd 5505		
Product Code	6109208	6109209
Ref. no.	5505 2900 55/19	5505 2900 57/19
Frame eye size	55 mm	57 mm
Bridge width	19 mm	19 mm
Colour	transparent	transparent
Marking on frame	W 166 F CE	W 166 F CE

uvex RX sp

Lifestyle at work

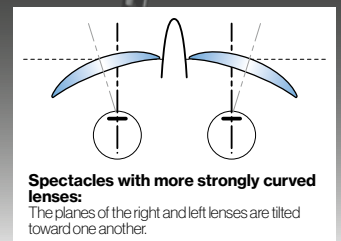
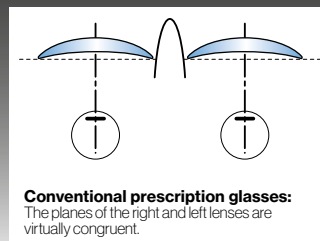
uvex RX sp frames

Make a statement with the uvex RX sp collection which stands out due to its sporty design and appealing frame colour combinations . All protection functions are fully integrated into the frame design requiring no separate side guards which is commonly the case with conventional protective spectacles.

The wraparound design offers the perfect fit and maximum protection thanks to its wide side arms and curvature of the lens. As with all uvex models, only the highest quality plastics are used in its protection.

uvex wrap lenses

We use lenses on an 8 base to match the curvature of the frame (5512 & 5513).



6109222

uvex RX sp 5513

- sporty, plastic “wraparound” design with uvex wrap lenses
- side shield and integrated brow guard frame design
- good fit due to anatomically shaped soft nose bridge
- sporty arms with a combination of soft and hard components ensure increased comfort and non-slip fit
- For prescription availability, please refer the options shown on pages 34 and 35

uvex RX sp 5513	
Product Code	6109222
Ref. no.	5513 1577 62/16
Frame eye size	62 mm
Bridge width	16 mm
Colour	grey, light green
Marking on frame	W 166 F CE

Prescription safety spectacles

uvex RX sp



6109216



6109217

uvex RX sp 5510

- Sporty, plastic “wraparound” design
- Side shield and integrated brow guard frame design
- Good fit with anatomically shaped soft nose bridge
- Sporty arms with a combination of soft and hard components ensure increased comfort and non-slip fit
- For prescription availability, please refer the options shown on pages 36 and 37

uvex RX sp 5510		
Product Code	6109216	6109217
Ref. no.	5510 1217 62/17	5510 1248 62/17
Frame eye size	62 mm	62 mm
Bridge width	17 mm	17 mm
Colour	matt black, light grey	matt black, orange
Marking on frame	W 166 F CE	W 166 F CE



6109220



6109221

uvex RX sp 5512

- Sporty, plastic “wraparound” design with uvex wrap lenses
- Supplied with uvex tight-fit-kit consisting of headband and foam seal
- Side shield and integrated brow guard frame design
- The arms can be replaced with a headband for a more secure fit when working in extreme conditions
- The foam seal guarantees a close and firm fit.
- Very good fit with anatomically adjustable, soft nose bridge
- Sporty side arms with a combination of soft and hard components ensure increased comfort and non-slip fit
- For prescription availability, please refer the options shown on pages 34 and 35

Applications in combination with the tight-fit-kit:

- Working in extreme situations, such as overhead or in confined spaces
- Working with fluids (drops) or chips and dust
- Complies with EN 166 “Protection against liquid droplets and splashes” (category “3”)

Note:

Only available in a Polycarbonate Wrap Single Vision or Varifocal lens type (compensated Rx).

We cannot supply Bifocals, Transitions or Prism, nor can we supply in CR39 lens material, only Polycarbonate.

uvex RX sp 5512		
Product Code	6109220	6109221
Ref. no.	5512 5573 65/16	5512 1348 65/16
Frame eye size	65 mm	65 mm
Bridge width	16 mm	16 mm
Colour	brown, olive	anthracite, orange
Marking on frame	W 166 F CE	W 166 F CE



6109220 assembled with uvex tight-fit-kit



6109221 assembled with uvex tight-fit-kit

Prescription safety inserts

uvex skyguard NT RX · uvex carbonvision RX

When a standard prescription safety frame does not give the full protection against chemical and liquid splash or dust particles; or the risk assessment specifies a goggle – uvex has the solution.

- Prescription insert fitted securely behind the goggle lens
- Both products include optimum non-allergenic seals
- The uvex skyguard NT RX features fully adjustable side arms offering low energy impact protection and enables the wearer to achieve an individual fit. Whereas, the uvex carbonvision RX goggle has a wide, adjustable elasticated headband
- Both products feature uvex's permanent anti-fog coating on the inside of the lens and a scratch resistant coating on the outside



6108200

uvex skyguard NT RX 5500

- The uvex skyguard NT prescription insert comes as a complete unit and offers wear protection against large dust particles and liquid splash
- Combining high-tech hard and soft materials the spectacle creates a soft effective seal around the eyes which is easy to clean
- The side arms can be adjusted for a secure, comfortable fit
- The uvex skyguard NT is a close fitting, wraparound spec for unobstructed vision
- Permanent uvex anti-fog lens coating on the inside, scratch resistant on the outside - Anti-fog coating does not come as standard on the prescription lenses in the insert. This is a separate request and incurs a surcharge
- The seal and prescription insert can easily be replaced
- For prescription availability, please refer the options shown on pages 30 and 31

uvex skyguard NT RX 5500	
Product Code	6108200
RX insert lens diameter	48 mm
RX insert bridge width	20 mm
Colour	blue, grey
Marking on frame	W 166 34 F CE
Lenses	PC clear
Lens marking	2C-1,2 W 1 FKN



6108201

uvex carbonvision RX 5501

- The ideal choice when you require the protection level of goggle and the lowest profile of size and weight in one product
- This close fitting goggle is supplied with the uvex supravision extreme, permanent anti-fog coating on the inside, scratch resistant on the outside - Anti-fog coating does not come as standard on the prescription lenses in the insert. This is a separate request and incurs a surcharge
- Comes as a complete unit and offers wearer protection against large dust particles and liquid splash
- Easy to fit
- Provides absolute comfort with no leakage to the goggle seal due to the lack of side arms
- Combines high-tech hard and soft materials creating a soft effective seal around the eyes which is easy to clean
- For prescription availability, please refer the options shown on pages 30 and 31

uvex carbonvision RX 5501	
Product Code	6108201
RX insert lens diameter	48 mm
RX insert bridge width	20 mm
Colour	black, grey
Marking on frame	W 166 34 B CE
Lenses	PC clear
Lens marking	2C-1,2 W 1 FKN

uvex i-3 add

Reliable protection and optimum wearer comfort

Optimum protective eyewear means improved, safe vision.

uvex i-3 add safety spectacles have invisible integrated dioptr correction for near vision. Strain on the eyes is effectively reduced (e.g. when reading) and the patented lens technology ensures an instant high level of compatibility for wearers. At the same time, the uvex i-3 add spectacles provide secure protection and optimal comfort.



Variable side arm inclination

The 5-position side arm inclination allows individual adjustment and optimum coverage of the eyes.



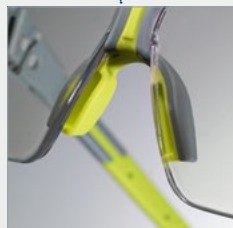
Addition

Two models are available for individualised correction of near vision. (+1.0 dpt. and +2.0 dpt.)



Flexible nose loops

The extremely soft adjustable Softflex nose loops ensure a secure fit and can be individually adapted to sit comfortably on the nose.



uvex supravision excellence

The uvex supravision excellence coating guarantees extreme scratch resistance on the outside and permanent anti-fogging properties on the inside.

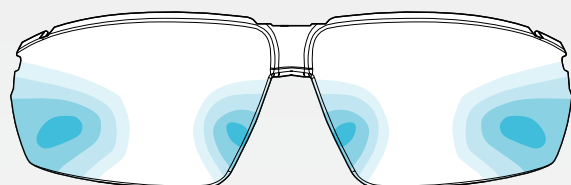
MADE IN GERMANY

Patent no.: DE 10 2012 207 384

Perfection in every detail

The patented lens technology makes it possible to integrate two progression zones for near vision on the inside of the duospherical single lens safety spectacles. The correction strength at the bottom of the lenses is +1.0 or +2.0, depending on the model. A distinctive feature and unique selling point is that the patented manufacturing technology means the front area and consequently the base curve of the lenses are not altered.

This combines extremely good coverage and fit, all the way to the edge, together with the benefits of a progressive lens on the inside area. A further benefit is that the progressive zone is not visible and that these spectacles comply with all standards of EN norms that are relevant to safety.



optical lens designed by
optiswiss
original since 1937

Progression zones

This diagram of the lenses shows the large zone that does not feature any optical correction. The transparent, integrated optical correction starts in the region of the middle and the strength increases gradually towards the lower edge of the lenses. The correction strength of the spectacles is +1.0 or +2.0, depending on the model.

The free-form lens is manufactured in accordance with standard parameters and designed for a distance of approximately 64 mm between the eyes. These safety spectacles do not permanently replace prescription safety spectacles.

uvex i-3 add

	uvex i-3 add 1.0	uvex i-3 add 2.0
Art. no.	6108210	6108211
Frame	anthracite, lime	anthracite, lime
	W 166 FT CE	W 166 FT CE
Lens	PC clear	PC clear
	UV 400	UV 400
	2C-1.2 W 1 FTKN CE	2C-1.2 W 1 FTKN CE
	uvex supravision excellence	uvex supravision excellence
Strength	1.0 dpt.	2.0 dpt.
Order unit	PC	PC



Including soft spectacles case with microfiber cloth

VDU spectacles

Individual eye protection at the screen

**MADE FOR
YOUR EYES**
MADE IN UVEX



uvex VDU spectacles are specially designed for working at a screen, enabling problem-free vision at a computer workstation.

The special feature of VDU spectacles is the distance for which they have been optimised. Normally, the lens is designed for a viewing distance of approximately 30 cm (reading distance) to correct presbyopia. A screen is usually about 50 cm – 80 cm away from the human eye.

To be able to focus continuously at different distances, spectacle wearers are forced to adopt an unnatural head position and body posture. This can lead to a variety of posture-related symptoms, such as overexertion of

the shoulder and neck muscles, fatigue symptoms or headaches. For most people who wear reading glasses or varifocals in their everyday lives, VDU spectacles are recommended if the main activity in their job requires viewing a computer screen and safety spectacles are not mandatory in the workplace.

uvex offers different lens materials, focus types and frames for VDU spectacles. The 'Made in uvex' quality system guarantees the best design from an optical and processing technology perspective. All materials used are free from harmful substances and are regularly inspected.

The collection

uvex offers different frames for VDU spectacles. Numerous models are available as metal or plastic frames. See pages 25-26.

Metal frames



Page 25

Plastic frames



Page 26

VDU Spectacles

Metal frames

Prescription range for VDU spectacles can be found on pages 30 and 31, but only available with CR39, 1.6 and 1.67 lens types.



3112 1233 54/17



3107 1000 55/17



3108 1400 54/18



3116 5500 53/17



3117 1590 48/20



3118 7190 55/17

	uvex 3112	uvex 3107	uvex 3108	uvex 3116	uvex 3117	uvex 3118
Product code	6110050	6110033	6110034	6110054	6110055	6110056
Ref. no.	3112 1233 54/17	3107 1000 55/17	3108 1400 54/18	3116 5500 53/17	3117 1590 48/20	3118 7190 55/17
Frame eye size	54 mm	55 mm	54 mm	53 mm	48 mm	55 mm
Bridge width	17 mm	17 mm	18 mm	17 mm	20 mm	17 mm
Colour	black, blue	black	gun	brown	grey, vintage	petrol, vintage

VDU Spectacles

Plastic and Nylor frames



3510 1025 52/17

uvex 3510	
Product code	6110046
Ref. no.	3510 1025 52/17
Frame eye size	52 mm
Bridge width	17 mm
Colour	black, translucent

Metal Nylor Frame



2104 1900 54/18

uvex 2104	
Product code	6110024
Ref. no.	2104 1900 54/18
Frame eye size	54 mm
Bridge width	18 mm
Colour	silver, matt

uvex Prescription Spectacles

For use with self-contained breathing apparatus (BA)

Prescription range for uvex BA inserts can be found on pages 30 and 31, but only available with CR39, 1.6 and 1.67 lens types.



uvex 9000

- For use with Sabre and Kemira respirator mask
- With short side arms this frame clips into slots moulded into the respirator

uvex 9000	
Colour.	Silver
Frame eye size	53 mm
Bridge width	18 mm

Available with CR39



uvex 9100

- Suitable for all respirators
- Thin metal side arms to fit close to the head to ensure little or no leakage when wearing a full face respirator

uvex 9100	
Colour	Silver
Frame eye size	44 mm
Bridge width	22 mm

Available with CR39



uvex 9250

- For use with Kemira, Interspiro respirator mask
- Designed to fit inside a full face respirator which can be easily adjusted

uvex 9250	
Colour	Silver
Frame eye size	50 mm
Bridge width	20 mm

Available with CR39



uvex 9255

- For use with Draeger Panorama respirator mask
- Fits in to mask with vertical adjustment
- Insert for Draeger Futura also available

uvex 9255	
Colour	Silver
Frame eye size	49 mm
Bridge width	18 mm

Available with CR39

Prescription safety spectacles

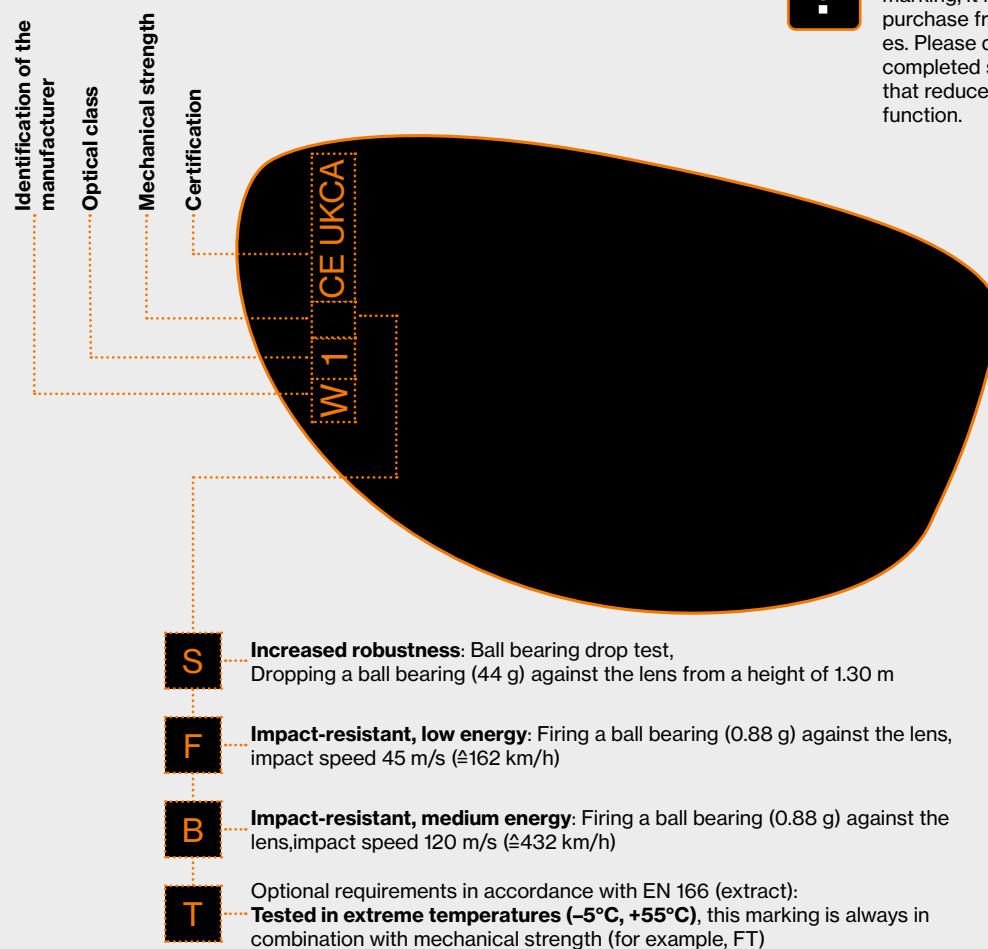
Certification and marking

Certification

Individually manufactured uvex prescription safety spectacles are tested and certified by independent testing institutes at regular intervals according to the requirements of EN 166.



Marking of lenses in accordance with EN 166




Note: Due to the mandatory marking, it is not possible to purchase frames without lenses. Please do not modify the completed spectacles in a way that reduces their protective function.

Prescription safety spectacles

Certification and marking

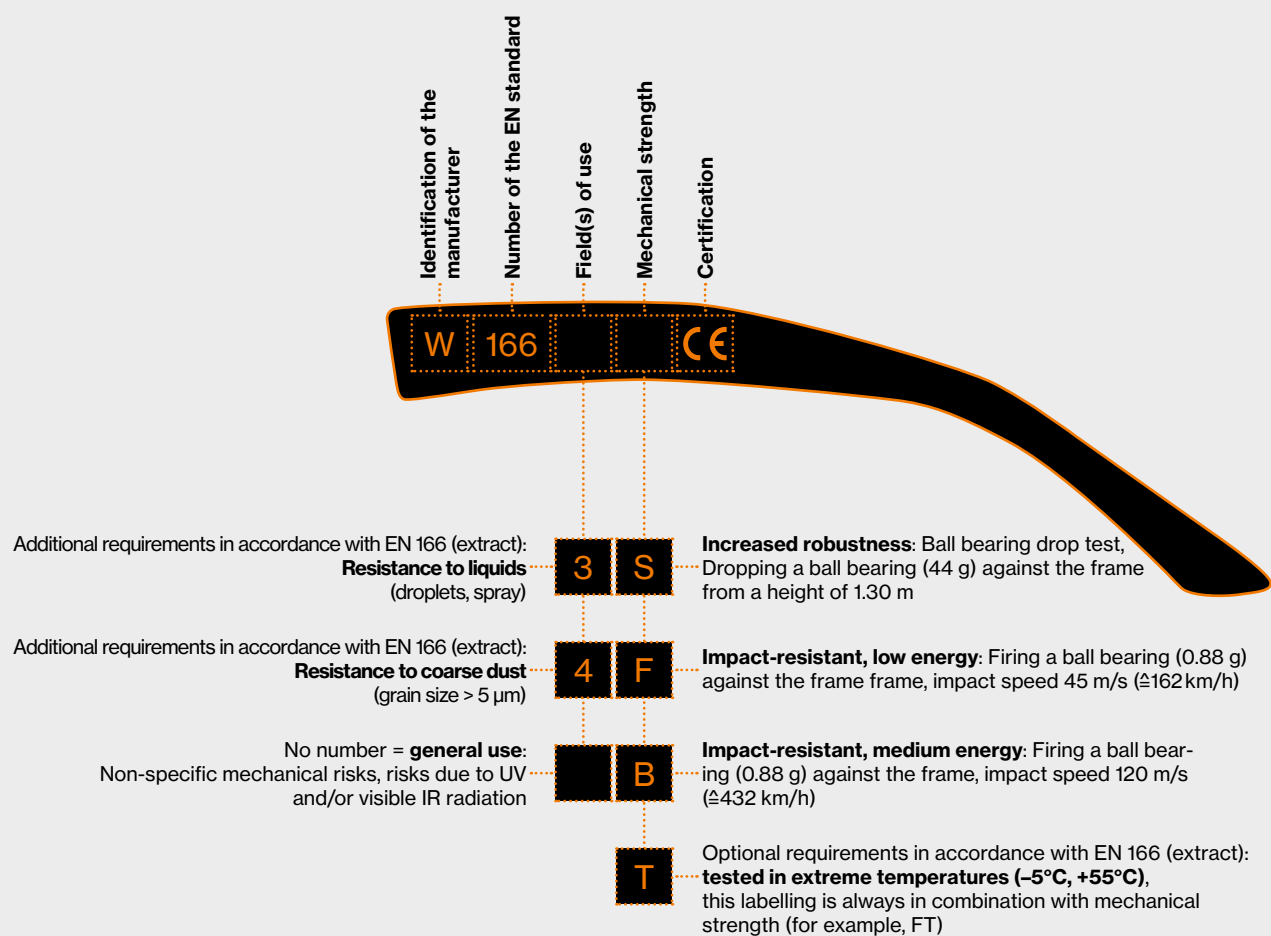
Marking

- Frame and lenses are permanently marked
- If the markings on the lens and frame are different, the lower mechanical strength applies to the entire eye protection device
- According to the PPE regulation, uvex prescription safety spectacles must be marked with the factory symbol and production date:  MM/YYYY



Marking in accordance with EN 166 on the lens and inside of the frame

Marking of the frame in accordance with EN 166



Lens Options

For plastic and metal frames

uvex basic collection models: 5101, 5102, 5106, 5108, 5109, 5110, 5111, 5502, 5506, uvex skyguard NT and uvex carbonvision

Lens Type	Parameter for centering lenses	Material	
Description	Maximum Height (Box Measure)	CR39	CR39 1.6
SINGLE VISION: Certified and available prescription range	As required	+10.00 to -10.00 at maximum value. Cyl 6.00 dpt.	+8.00 to -10.00 at maximum value. Cyl 6.00 dpt.
BIFOCAL D28: Certified and available prescription range	As required	+7.00 to -8.00 at maximum value. Cyl 4.00 dpt. Add +3.00	Not available
VARIFOCAL QUADRO: Certified and available prescription range	Min: 18mm	+6.00 to -10.00 at maximum value. Cyl 6.00 dpt. Add +3.00	+6.00 to -10.00 at maximum value. Cyl 4.00 dpt. Add +3.00
VARIFOCAL QUADRO MINI: Certified Prescription Range	Min: 14mm	+6.00 to -10.00 at maximum value. Cyl 6.00 dpt. Add +3.00	+6.00 to -10.00 at maximum value. Cyl 4.00 dpt. Add +3.00
VARIFOCAL COMFORT MAX: Certified Prescription Range	Min: 17mm	+6.00 to -10.00 at maximum value. Cyl 6.00 dpt. Add +3.00	+8.00 to -12.00 at maximum value. Cyl 6.00 dpt. Add +3.00
VARIFOCAL COMFORT SHORT: Certified Prescription Range	Min: 14mm	+6.00 to -10.00 at maximum value. Cyl 6.00 dpt. Add +3.00	+8.00 to -12.00 at maximum value. Cyl 6.00 dpt. Add +3.00
VARIFOCAL PHYSIO 3: Certified Prescription Range	Min: 17mm	+6.00 to -10.00 at maximum value. Cyl 6.00 dpt. Add +3.00	+8.00 to -12.00 at maximum value. Cyl 6.00 dpt. Add +3.00
VARIFOCAL PHYSIO 3 SHORT: Certified Prescription Range	Min: 14mm	+6.00 to -10.00 at maximum value. Cyl 6.00 dpt. Add +3.00	+8.00 to -12.00 at maximum value. Cyl 6.00 dpt. Add +3.00
INTERVIEW 0.80 (Occupational Lens): Certified Prescription Range	n/a	+5.00 to -3.00 at maximum value. Cyl +/- 2.00 dpt.	Not available
INTERVIEW 1.30 (Occupational Lens): Certified Prescription Range	n/a	+5.00 to -3.00 at maximum value. Cyl +/- 2.00 dpt.	Not available
ACCESS 0.75 (Occupational Lens): Certified Prescription Range	n/a	+6.00 to -6.00 at maximum value. Cyl 4.00 dpt.	Not available
ACCESS 1.25 (Occupational Lens): Certified Prescription Range	n/a	+6.00 to -6.00 at maximum value. Cyl 4.00 dpt.	Not available
COMPUTER 2V (Occupational Lens): Certified Prescription Range	n/a	+7.00 to -6.00 at maximum value. Cyl 4.00 dpt.	Not available
COMPUTER 3V (Occupational Lens): Certified Prescription Range	n/a	+6.00 to -7.50 at maximum value. Cyl 6.00 dpt.	Not available

► The overview shows the maximum prescription range which is approved and certified. Depending on the size of the frame and the lens material and various other measurements, further restrictions may apply.

****Maximum prism on all lenses is 3.00****

		Optional Extras			
CR39 1.67	Poly	AR Coating	Tint	Optifog	Transitions Brown
+8.00 to -14.50 at maximum value. Cyl 6.00 dpt.	+8.00 to -10.00 at maximum value. Cyl 6.00 dpt.	Yes	Yes	Yes	+7.50 to -8.00 at maximum value. Cyl 6.00 dpt.
Not available	+9.50 to -10.00 at maximum value. Cyl 4.00 dpt. Add +3.00	Yes	Yes	No	Not available
+8.00 to -12.00 at maximum value. Cyl 4.00 dpt. Add +3.00	+9.50 to -10.00 at maximum value. Cyl 6.00 dpt. Add +3.00	Yes	Yes	No	Not available
+8.00 to -12.00 at maximum value. Cyl 4.00 dpt. Add +3.00	+9.50 to -10.00 at maximum value. Cyl 6.00 dpt. Add +3.00	Yes	Yes	No	Not available
+10.00 to -12.00 at maximum value. Cyl 6.00 dpt. Add +3.00	+6.00 to -10.00 at maximum value. Cyl 6.00 dpt. Add +3.00	Yes	Yes	Yes	+6.00 to -10.00 at maximum value. Cyl 6.00 dpt. Add +3.00
+10.00 to -12.00 at maximum value. Cyl 6.00 dpt. Add +3.00	+6.00 to -10.00 at maximum value. Cyl 6.00 dpt. Add +3.00	Yes	Yes	Yes	+6.00 to -10.00 at maximum value. Cyl 6.00 dpt. Add +3.00
+9.00 to -12.00 at maximum value. Cyl 6.00 dpt. Add +3.00	+6.00 to -10.00 at maximum value. Cyl 6.00 dpt. Add +3.00	Yes	Yes	Yes	Not available
+9.00 to -12.00 at maximum value. Cyl 6.00 dpt. Add +3.00	+6.00 to -10.00 at maximum value. Cyl 6.00 dpt. Add +3.00	Yes	Yes	Yes	Not available
Not available	Not available	Yes	Yes	No	Not available
Not available	Not available	Yes	Yes	No	Not available
Not available	Not available	Yes	Yes	Yes	Not available
Not available	Not available	Yes	Yes	Yes	Not available
Not available	Not available	Yes	Yes	Yes	Not available
Not available	Not available	Yes	Yes	Yes	Not available

Lens Options

For uvex RX cd frame collection:

5505, 5514, 5515, 5518, 5520, 5521, 5522

Lens Type	Parameter for centering lenses	Material	
Description	Maximum Height (Box Measure)	CR39	CR39 1.6
SINGLE VISION: Certified and available prescription range	As required	+6.00 to -6.00 at maximum value. Cyl 4.00 dpt.	+6.00 to -6.00 at maximum value. Cyl 4.00 dpt.
BIFOCAL D28: Certified and available prescription range	As required	+6.00 to -6.00 at maximum value. Cyl 4.00 dpt. Add +3.00	Not available
VARIFOCAL QUADRO: Certified and available prescription range	Min: 18mm	+6.00 to -6.00 at maximum value. Cyl 4.00 dpt. Add +3.00	+6.00 to -6.00 at maximum value. Cyl 4.00 dpt. Add +3.00
VARIFOCAL QUADRO MINI: Certified Prescription Range	Min: 14mm	+6.00 to -6.00 at maximum value. Cyl 4.00 dpt. Add +3.00	+6.00 to -6.00 at maximum value. Cyl 4.00 dpt. Add +3.00
VARIFOCAL COMFORT MAX: Certified Prescription Range	Min: 17mm	+6.00 to -6.00 at maximum value. Cyl 4.00 dpt. Add +3.00	+6.00 to -6.00 at maximum value. Cyl 4.00 dpt. Add +3.00
VARIFOCAL COMFORT SHORT: Certified Prescription Range	Min: 14mm	+6.00 to -6.00 at maximum value. Cyl 4.00 dpt. Add +3.00	+6.00 to -6.00 at maximum value. Cyl 4.00 dpt. Add +3.00
VARIFOCAL PHYSIO 3: Certified Prescription Range	Min: 17mm	+6.00 to -6.00 at maximum value. Cyl 4.00 dpt. Add +3.00	+6.00 to -6.00 at maximum value. Cyl 4.00 dpt. Add +3.00
VARIFOCAL PHYSIO 3 SHORT: Certified Prescription Range	Min: 14mm	+6.00 to -6.00 at maximum value. Cyl 4.00 dpt. Add +3.00	+6.00 to -6.00 at maximum value. Cyl 4.00 dpt. Add +3.00
INTERVIEW 0.80 (Occupational Lens): Certified Prescription Range	n/a	+5.00 to -3.00 at maximum value. Cyl +/- 2.00 dpt.	Not available
INTERVIEW 1.30 (Occupational Lens): Certified Prescription Range	n/a	+5.00 to -3.00 at maximum value. Cyl +/- 2.00 dpt.	Not available
ACCESS 0.75 (Occupational Lens): Certified Prescription Range	n/a	+6.00 to -6.00 at maximum value. Cyl 4.00 dpt.	Not available
ACCESS 1.25 (Occupational Lens): Certified Prescription Range	n/a	+6.00 to -6.00 at maximum value. Cyl 4.00 dpt.	Not available
COMPUTER 2V (Occupational Lens): Certified Prescription Range	n/a	+6.00 to -6.00 at maximum value. Cyl 4.00 dpt.	Not available
COMPUTER 3V (Occupational Lens): Certified Prescription Range	n/a	+6.00 to -6.00.00 at maximum value. Cyl 4.00 dpt.	Not available

► The overview shows the maximum prescription range which is approved and certified. Depending on the size of the frame and the lens material and various other measurements, further restrictions may apply.

****Maximum prism on all lenses is 3.00****

		Optional Extras			
CR39 1.67	Poly	AR Coating	Tint	Optifog	Transitions Brown
+6.00 to -6.00 at maximum value. Cyl 4.00 dpt.	+6.00 to -6.00 at maximum value. Cyl 4.00 dpt.	Yes	Yes	Yes	+6.00 to -6.00 at maximum value. Cyl 4.00 dpt.
Not available	+6.00 to -6.00 at maximum value. Cyl 4.00 dpt. Add +3.00	Yes	Yes	No	Not available
+6.00 to -6.00 at maximum value. Cyl 4.00 dpt. Add +3.00	+6.00 to -6.00 at maximum value. Cyl 4.00 dpt. Add +3.00	Yes	Yes	No	Not available
+6.00 to -6.00 at maximum value. Cyl 4.00 dpt. Add +3.00	+6.00 to -6.00 at maximum value. Cyl 4.00 dpt. Add +3.00	Yes	Yes	No	Not available
+6.00 to -6.00 at maximum value. Cyl 4.00 dpt. Add +3.00	+6.00 to -6.00 at maximum value. Cyl 4.00 dpt. Add +3.00	Yes	Yes	Yes	+6.00 to -6.00 at maximum value. Cyl 4.00 dpt. Add +3.00
+6.00 to -6.00 at maximum value. Cyl 4.00 dpt. Add +3.00	+6.00 to -6.00 at maximum value. Cyl 4.00 dpt. Add +3.00	Yes	Yes	Yes	+6.00 to -6.00 at maximum value. Cyl 4.00 dpt. Add +3.00
+6.00 to -6.00 at maximum value. Cyl 4.00 dpt. Add +3.00	+6.00 to -6.00 at maximum value. Cyl 4.00 dpt. Add +3.00	Yes	Yes	Yes	Not available
+6.00 to -6.00 at maximum value. Cyl 4.00 dpt. Add +3.00	+6.00 to -6.00 at maximum value. Cyl 4.00 dpt. Add +3.00	Yes	Yes	Yes	Not available
Not available	Not available	Yes	Yes	No	Not available
Not available	Not available	Yes	Yes	No	Not available
Not available	Not available	Yes	Yes	Yes	Not available
Not available	Not available	Yes	Yes	Yes	Not available
Not available	Not available	Yes	Yes	Yes	Not available
Not available	Not available	Yes	Yes	Yes	Not available

Lens Options

For uvex RX sp frame collection:

5512, 5513

Lens Type	Parameter for centering lenses	Material	
Description	Maximum Height (Box Measure)	CR39	CR39 1.6
SINGLE VISION: Certified and available prescription range	As required	Not available	Not available
BIFOCAL D28: Certified and available prescription range	Not available	Not available	Not available
VARIFOCAL QUADRO: Certified and available prescription range	Min: 18mm	Not available	Not available
VARIFOCAL QUADRO MINI: Certified Prescription Range	Not available	Not available	Not available
VARIFOCAL COMFORT MAX: Certified Prescription Range	Not available	Not available	Not available
VARIFOCAL COMFORT SHORT: Certified Prescription Range	Not available	Not available	Not available
VARIFOCAL PHYSIO 3: Certified Prescription Range	Not available	Not available	Not available
VARIFOCAL PHYSIO 3 SHORT: Certified Prescription Range	Not available	Not available	Not available
INTERVIEW 0.80 (Occupational Lens): Certified Prescription Range	n/a	Not available	Not available
INTERVIEW 1.30 (Occupational Lens): Certified Prescription Range	n/a	Not available	Not available
ACCESS 0.75 (Occupational Lens): Certified Prescription Range	n/a	Not available	Not available
ACCESS 1.25 (Occupational Lens): Certified Prescription Range	n/a	Not available	Not available
COMPUTER 2V (Occupational Lens): Certified Prescription Range	n/a	Not available	Not available
COMPUTER 3V (Occupational Lens): Certified Prescription Range	n/a	Not available	Not available

► The overview shows the maximum prescription range which is approved and certified. Depending on the size of the frame and the lens material and various other measurements, further restrictions may apply.

****Maximum prism on all lenses is 3.00****

		Optional Extras			
CR39 1.67	Poly	AR Coating	Tint	Optifog	Transitions Brown
Not available	+3.50 to -3.50 at maximum value. Cyl +/- 2.00 dpt.	Yes	Yes	No	Not available
Not available	Not available	No	No	No	Not available
Not available	+3.50 to -3.50 at maximum value. Cyl +/- 2.00 dpt.	Yes	Yes	No	Not available
Not available	Not available	No	No	No	Not available
Not available	Not available	No	No	No	Not available
Not available	Not available	No	No	No	Not available
Not available	Not available	No	No	No	Not available
Not available	Not available	No	No	No	Not available
Not available	Not available	No	No	No	Not available
Not available	Not available	No	No	No	Not available
Not available	Not available	No	No	No	Not available
Not available	Not available	No	No	No	Not available
Not available	Not available	No	No	No	Not available
Not available	Not available	No	No	No	Not available
Not available	Not available	No	No	No	Not available
Not available	Not available	No	No	No	Not available

Lens Options

For uvex RX sp frame collection:

5510

Lens Type	Parameter for centering lenses	Material	
Description	Maximum Height (Box Measure)	CR39	CR39 1.6
SINGLE VISION: Certified and available prescription range	As required	+5.00 to -5.00 at maximum value. Cyl 2.00 dpt. Add +3.00	+5.00 to -5.00 at maximum value. Cyl 2.00 dpt. Add +3.00
BIFOCAL D28: Certified and available prescription range	As required	+5.00 to -5.00 at maximum value. Cyl 2.00 dpt. Add +3.00	Not available
VARIFOCAL QUADRO: Certified and available prescription range	Min: 18mm	+5.00 to -5.00 at maximum value. Cyl 2.00 dpt. Add +3.00	+5.00 to -5.00 at maximum value. Cyl 2.00 dpt. Add +3.00
VARIFOCAL QUADRO MINI: Certified Prescription Range	Min: 14mm	+5.00 to -5.00 at maximum value. Cyl 2.00 dpt. Add +3.00	+5.00 to -5.00 at maximum value. Cyl 2.00 dpt. Add +3.00
VARIFOCAL COMFORT MAX: Certified Prescription Range	Min: 17mm	+5.00 to -5.00 at maximum value. Cyl 2.00 dpt. Add +3.00	+5.00 to -5.00 at maximum value. Cyl 2.00 dpt. Add +3.00
VARIFOCAL COMFORT SHORT: Certified Prescription Range	Min: 14mm	+5.00 to -5.00 at maximum value. Cyl 2.00 dpt. Add +3.00	+5.00 to -5.00 at maximum value. Cyl 2.00 dpt. Add +3.00
VARIFOCAL PHYSIO 3: Certified Prescription Range	Min: 17mm	+5.00 to -5.00 at maximum value. Cyl 2.00 dpt. Add +3.00	+5.00 to -5.00 at maximum value. Cyl 2.00 dpt. Add +3.00
VARIFOCAL PHYSIO 3 SHORT: Certified Prescription Range	Min: 14mm	+5.00 to -5.00 at maximum value. Cyl 2.00 dpt. Add +3.00	+5.00 to -5.00 at maximum value. Cyl 2.00 dpt. Add +3.00
INTERVIEW 0.80 (Occupational Lens): Certified Prescription Range	n/a	+5.00 to -3.00 at maximum value. Cyl +/- 2.00 dpt.	Not available
INTERVIEW 1.30 (Occupational Lens): Certified Prescription Range	n/a	+5.00 to -3.00 at maximum value. Cyl +/- 2.00 dpt.	Not available
ACCESS 0.75 (Occupational Lens): Certified Prescription Range	n/a	+5.00 to -5.00 at maximum value. Cyl 2.00 dpt. Add +3.00	Not available
ACCESS 1.25 (Occupational Lens): Certified Prescription Range	n/a	+5.00 to -5.00 at maximum value. Cyl 2.00 dpt. Add +3.00	Not available
COMPUTER 2V (Occupational Lens): Certified Prescription Range	n/a	+5.00 to -5.00 at maximum value. Cyl 2.00 dpt. Add +3.00	Not available
COMPUTER 3V (Occupational Lens): Certified Prescription Range	n/a	+5.00 to -5.00 at maximum value. Cyl 2.00 dpt. Add +3.00	Not available

► The overview shows the maximum prescription range which is approved and certified. Depending on the size of the frame and the lens material and various other measurements, further restrictions may apply.

****Maximum prism on all lenses is 3.00****

		Optional Extras			
CR39 1.67	Poly	AR Coating	Tint	Optifog	Transitions Brown
+5.00 to -5.00 at maximum value. Cyl 2.00 dpt. Add +3.00	+5.00 to -5.00 at maximum value. Cyl 2.00 dpt. Add +3.00	Yes	Yes	Yes	+5.00 to -5.00 at maximum value. Cyl 2.00 dpt.
Not available	+5.00 to -5.00 at maximum value. Cyl 2.00 dpt. Add +3.00	Yes	Yes	No	Not available
+5.00 to -5.00 at maximum value. Cyl 2.00 dpt. Add +3.00	+5.00 to -5.00 at maximum value. Cyl 2.00 dpt. Add +3.00	Yes	Yes	No	Not available
+5.00 to -5.00 at maximum value. Cyl 2.00 dpt. Add +3.00	+5.00 to -5.00 at maximum value. Cyl 2.00 dpt. Add +3.00	Yes	Yes	No	Not available
+5.00 to -5.00 at maximum value. Cyl 2.00 dpt. Add +3.00	+5.00 to -5.00 at maximum value. Cyl 2.00 dpt. Add +3.00	Yes	Yes	Yes	+5.00 to -5.00 at maximum value. Cyl 2.00 dpt. Add +3.00
+5.00 to -5.00 at maximum value. Cyl 2.00 dpt. Add +3.00	+5.00 to -5.00 at maximum value. Cyl 2.00 dpt. Add +3.00	Yes	Yes	Yes	+5.00 to -5.00 at maximum value. Cyl 2.00 dpt. Add +3.00
+5.00 to -5.00 at maximum value. Cyl 2.00 dpt. Add +3.00	+5.00 to -5.00 at maximum value. Cyl 2.00 dpt. Add +3.00	Yes	Yes	Yes	Not available
+5.00 to -5.00 at maximum value. Cyl 2.00 dpt. Add +3.00	+5.00 to -5.00 at maximum value. Cyl 2.00 dpt. Add +3.00	Yes	Yes	Yes	Not available
Not available	Not available	Yes	Yes	No	Not available
Not available	Not available	Yes	Yes	No	Not available
Not available	Not available	Yes	Yes	Yes	Not available
Not available	Not available	Yes	Yes	Yes	Not available
Not available	Not available	Yes	Yes	Yes	Not available
Not available	Not available	Yes	Yes	Yes	Not available

uvex Prescription Multiple Form Request

(For new customers only. Not for individual employee use
or for requesting a reprint of existing forms)

Date:

Is this request for PRE-PRINTED FORMS OR THE ORDERING FACILITY? (Delete as applicable)

☐ Pre-printed Forms

☐ Website

Is this request for:

Safety:

Quantity:

(For printed forms only)

Office:

Quantity:

Both:

Quantity:

Where would you like printed forms to be sent? (Delete as applicable)

☐ End-user

☐ Distributor

☐ Optician

For the attention of:

Company Name:

Address:

Telephone No:

Fax No:

Tracking number (internal use only):

Distribution:

Authorising person:

Job title:

Phone/Fax number:

Email address:

(must be supplied if requesting to go on-line)

Frames allowed: All allowed? Please put a cross in the box:

Certain frames allowed? Please put a cross in the box and list them below (showing specific colours if applicable):

Frames/colours:

Lenses:

Safety: CR39

Polycarbonate

All

(Delete as applicable)

Lenses:

Office: CR39

(Delete as applicable)

Special instructions:

(Delete as applicable)

Safety

No cosmetic extras.

uvex pay for eye test fee and invoice company.

All lens variants allowed. (single vision, bifocal and varifocal)

Single vision only unless specified by authorising officer

Office

No cosmetic extras.

uvex pay for eye test fee and invoice company.

All lens variants allowed. (single vision, bifocal and varifocal)

Single vision only.

If you require a specific optician to be printed on the form, please enter their details here:

Once complete, fax form to 01252 731221 or scan and email to Sarah Swinden: s.swinden@uvex.co.uk

uvex

UVEX SAFETY (UK) LTD
uvex House
Farnham Trading Estate
Farnham
Surrey
England
GU9 9NW

Tel: 01252 725552
Fax: 01252 731221
prescription@uvex.co.uk
uvex-safety.co.uk

protecting people