





P 004 **BRAND STORY**
P 006 **TECHNOLOGIES**

P 010 **MACSOLE® X**
P 022 **RUN-R**
P 038 **SUXXEED OFFROAD**
P 048 **MACSOLE® SPORT 2.0**
P 056 **MACSOLE® ADVENTURE 2.0**
P 064 **XXL PRO**
P 070 **SUXXEED**
P 076 **MACSOLE® 1.0**
P 086 **FLAG**
P 090 **FOCUS**
P 096 **MACSOLE® EXTREM 2.0**

P 100 **ACCESSORIES**
P 102 **MERCHANDISING**
P 104 **STANDARDS**
P 106 **CONTENTS**



PERFORMANCE WITH STYLE

OUR SLOGAN REFLECTS OUR GOAL.

Heckel, based in La Walck, France, has been a world leader in the manufacture of safety footwear since 1970. The brand's expertise in this field meant that Heckel became regarded as an industry expert in its field. Since 2001 Heckel has been a brand of the uvex Group, a pioneer in personal protective equipment (PPE).

The Heckel name is synonymous with high performance. When worn, users know they are fully protected by their Heckel safety footwear and equipped for even the most extreme conditions.

We never compromise on the quality and control of our products. This is the best way of guaranteeing the performance of our products.

We are convinced that a wearer's safety stems from a combination of the most innovative materials and technologies and good design. Looking good whilst providing total protection is Heckel's goal.

OUR TECHNOLOGIES

YOU ARE THE EXPERTS THAT WE LISTEN TO
WHEN DESIGNING NEW SAFETY FOOTWEAR.
YOUR REQUIREMENTS ARE WHAT DRIVES OUR INNOVATION
PROCESSES TO DELIVER FOOTWEAR THAT WILL
PROTECT YOU ON A DAILY BASIS.

HECKEL FOOTWEAR OFFERS A NUMBER OF SAFETY AND PROTECTION SPECIFICATIONS. IN ORDER TO FACILITATE UNDERSTANDING OF THESE SPECIFICATIONS, WE USE VARIOUS PICTOGRAMS. BELOW IS THE LIST OF THOSE PICTOGRAMS AND THEIR MEANING.

100% metal free

The entire shoe is free of any metal parts



Insole with thermal insulation
Insulation against heat and cold



Non-metallic protective toe cap

Provides protection against falling objects up to 200 joules and compression of up to 15,000 Newton in accordance with the EN 20345 standard | 100 % antimagnetic | comfortable due to its ergonomic shape | extra wide | 20 % lighter than a conventional steel toe cap | conducts less heat and cold than a metal toe cap



Resistance to contact heat (HRO)
Resistance to temperatures of up to 300°C in accordance with the EN 20345 standard



Stainless steel penetration resistant midsole

Resistance to penetration up to 1,100 Newton in accordance with the EN 20345 standard



Protective steel toe cap

Provides protection against falling objects up to 200 joules and compression of up to 15,000 Newton in accordance with the EN 20345 standard



Non-metallic penetration resistant midsole

Resistance to penetration up to 1,100 Newton in accordance with the EN 20345 standard | 100 % composite | flexible | antimagnetic | protects 100 % of the surface of the foot (as opposed to 85 % on average for steel soles) | lighter than steel soles | conducts less heat and cold than a metal sole



Resistance to water penetration

WRU (water resistant upper) or WR (water resistant) in accordance with the EN 20345 standard



Flame-resistant stitching

OUR TECHNOLOGIES

WITH THE HELP OF OUR SPECIALIST TECHNICIANS, WE CREATE PRODUCTS THAT ARE EVER MORE INNOVATIVE. SOPHISTICATED CONTROL PROCEDURES ARE APPLIED TO ALL OUR MODELS THROUGHOUT THE MANUFACTURING PROCESS IN ORDER TO GUARANTEE ABSOLUTE QUALITY.



The rubber technology MACSOLE®

Rubber is prized in many fields for its **exceptional properties**: grip, durability, elasticity, resistance to abrasion and resistance to extreme temperatures and harsh substances. Building on its many years of experience, Heckel has developed revolutionary new types of.

rubber under the MACSOLE® brand. MACSOLE® soles, made from an exclusive mixture of nitrile rubbers developed by our R&D department, offer unequalled performances in terms of adherence, safety and longevity in the most extreme conditions.



Durability

MACSOLE® soles are made of unique, exclusive compounds offering exceptional abrasion resistance and prolong the service life of our products.



Grip

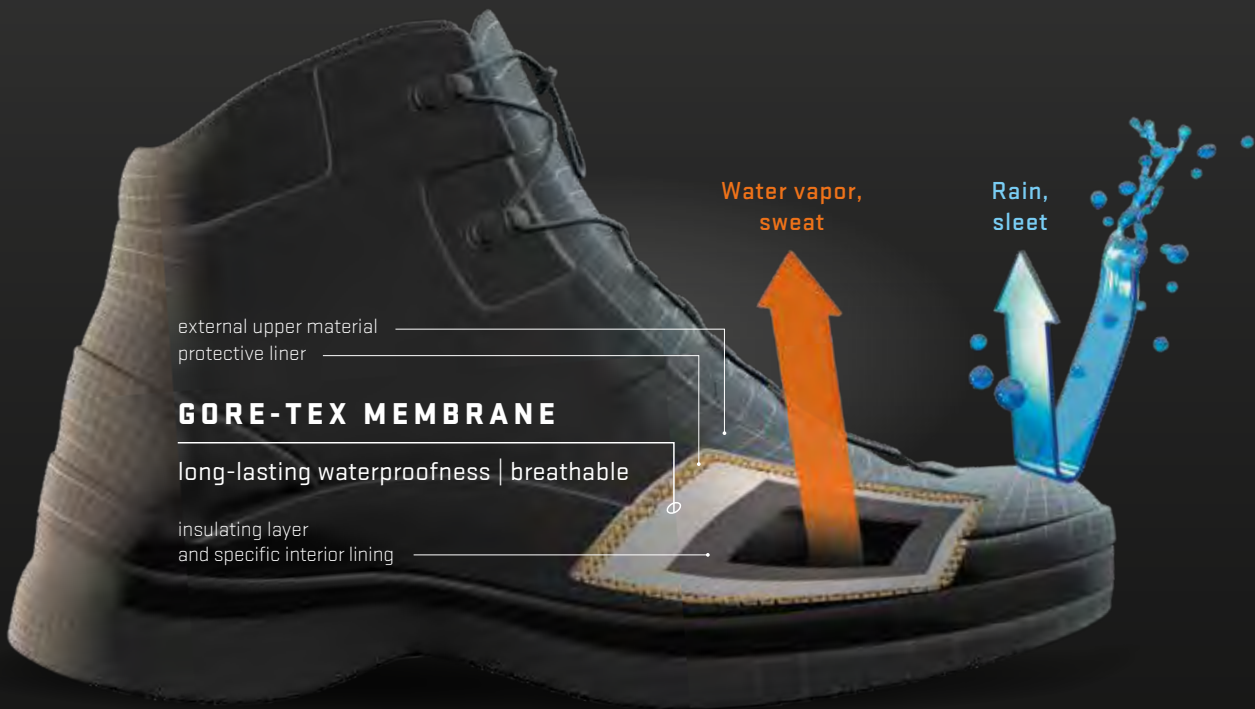
Our exclusive MACSOLE® rubber formula offers unrivalled grip, far exceeding the requirements of EN 13287.

Resistance to contact heat

Only rubber can meet the HRO standard (300°C). Those models endowed with MACSOLE® technology can resist contact with heat as high as 800°C.

Shock absorption

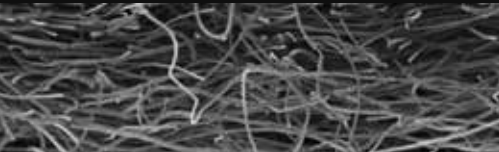
The unique and exclusive rubber material used to make each MACSOLE® model provides very high shock absorption properties. The natural elasticity of rubber ensures long-lasting shock absorption. MACSOLE® footwear helps to lower the risk of accidents by reducing fatigue caused by prolonged walking or standing.



GORE-TEX membrane offers climate comfort for all working environments.

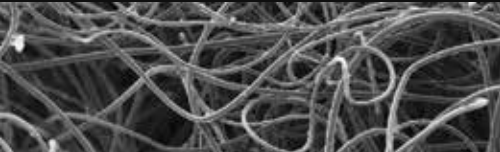
GORE-TEX membrane possesses microscopic pores 20,000 times smaller than a water droplet, but 700 times larger than a water vapor molecule. This unique combination stops water from penetrating, offering long-lasting waterproofness and retains high levels of breathability even during physical exertion. GORE-TEX footwear keeps feet dry and provides ultimate climate comfort.

TRADITIONAL INSULATION VERSUS GORE-TEX INSULATION



Traditional insulation

more solid fibres **increase weight** | the flat 2D layered structure **prevents air from entering** | **loss of insulating capacity** when compressed | fibres bond together **limiting flexibility**



GORE-TEX Insulation

15% lighter | hollow and fewer fibres **reduce weight** | the 3D structure makes it possible to store more air for **increased insulation** | spiral effect ensures **flexibility and comfort**



Non-metallic penetration resistant midsole

resistance to penetration up to **1,100 Newton** in accordance with the EN 20345 standard | **100 % composite** | flexible | **antimagnetic** | **protects 100 %** of the surface of the foot (as opposed to 85 % on average for steel midsoles) | **lighter** than steel midsoles | conducts less heat and cold than a metal sole



Non-metallic protective toe cap

provides protection against falling objects up to **200 j** and compression of up to **15,000 Newton** in accordance with the EN 20345 standard | **100 % antimagnetic** | **comfortable** due to its ergonomic shape | extra wide | **20 % lighter** than a conventional steel toe cap | **conducts less** heat and cold than a metal toe cap



MACSOLE®
X

THE MACSOLE® X RANGE IS IDEAL FOR THOSE WORKING IN DEMANDING OR EVEN EXTREME CONDITIONS WITH EXPOSURE TO BAD WEATHER, RAIN, EXTREME COLD AND UNEVEN TERRAIN.

MACSOLE® products are designed to withstand the rigors of tough environments, offering several technical solutions: GORE-TEX membrane is waterproof and breathable keeping feet dry from external elements and a comfortable internal climate, GORE-TEX new generation thermal insulation technology gives maximum heat retention and MACOLE® X rubber sole delivers excellent grip. The high quality raw materials and metal-free protection elements for lower weight greater flexibility.



01
PU comfort layer
excellent shock absorption | lightness

02
Injection moulded PU scuff cap
extends product life | ideal for people that spend time kneeling



PU/rubber sole

SRC | resistance to **oils & hydrocarbons, chemicals** | **antistatic** | optimal **flexibility & shock absorption** | resistance to contact heat **up to 300°C** (HRO standard)

French (EU) sizing system, width 11

- 01 rear grooves improve adhesion during first contact of heel to floor
- 02 PU comfort layer for excellent shock absorption
- 03 pronounced heel
- 04 GRIPSTEP profile for extra grip on ladders & stairs
- 05 self-cleaning profile increases slip resistance
- 06 all-terrain profile with deep cleats
- 07 excellent abrasion resistance
- 08 front grooves for better grip

Insole

anatomically shaped | antistatic



textile over layer: very good abrasion resistance | absorbant | fast drying

EVA perforated shock absorber and non-woven fibres: very high moisture absorption capacity | fast drying



Non-metallic penetration resistant midsole

resistance to penetration up to **1100 Newton** in accordance with the EN 20345 standard | **100 % composite** | flexible | **antimagnetic** | **protects 100 %** of the surface of the foot (as opposed to 85 % on average for steel soles) | **lighter** than steel soles | conducts less heat and cold than a metal sole



Non-metallic protective toe cap

provides protection against falling objects up to **200 j** and compression of up to **15000 Newton** in accordance with the EN 20345 standard | **antimagnetic** | **comfortable** due to its ergonomic shape | extra wide | **20 % lighter** than a conventional steel toe cap | **conducts less** heat and cold than a metal toe cap





MX 100 GT S3 CI HI WR HRO SRC

PU/rubber **sole**, excellent grip, hydrocarbon and chemical resistant, self-cleaning sole profile, excellent shock absorption, injection moulded PU scuff cap, resistant to contact heat up to 300°C | water-resistant full grain leather and textile **upper**, padded tongue and collar, closure system with non-metallic hooks and zip, reflective piping and insert | GORE-TEX Insulated Comfort Membrane **lining** - new: 15 % lighter and with the same level of insulation due to a new GORE-TEX insulation technology | metal-free **toe cap** | metal-free **penetration resistant midsole** | anatomically shaped **hygienic insole** with level heel shock absorber | **weight 770 g** in size 42

outdoor work in extremely cold conditions, transportation networks, mountain work, cold stores, oil & gas, mining. 100 % waterproof (WR)

SIZES **37 - 48** | EN ISO 20345 : 2011
ART. NO. 63923





MX 200 GT LOW S3 CI HI WR HRO SRC

PU/rubber **sole**, excellent grip, oil, hydrocarbon and chemical resistant, self-cleaning sole profile, excellent shock absorption, injection moulded PU scuff cap, resistant to contact heat up to 300°C | water-resistant full grain leather and textile **upper**, padded tongue and collar, closure system with non-metallic hooks and eyelets, reflective piping | membrane GORE-TEX Extended Comfort Footwear **lining** | metal-free **toe cap** | metal-free **penetration resistant midsole** | anatomically shaped **hygienic insole** with heel shock absorber | **weight 680 g** in size 42



100 %
metal
free



MX 200 GT HIGH S3 CI HI WR HRO SRC

PU/rubber **sole**, excellent grip, oil, hydrocarbon and chemical resistant, self-cleaning sole profile, excellent shock absorption, injection moulded PU scuff cap, resistant to contact heat up to 300°C | water-resistant full grain leather and textile **upper**, padded tongue and collar, closure system with non-metallic hooks and eyelets, reflective piping | membrane GORE-TEX Extended Comfort Footwear **lining** | metal-free **toe cap** | metal-free **penetration resistant midsole** | anatomically shaped **hygienic insole** with heel shock absorber | **weight 690 g** in size 42



100 %
metal
free





CI



SRC



MX 400 GT S3 CI HI WR HRO SRC

PU/rubber **sole**, excellent grip, oil, hydrocarbon and chemical resistant, self-cleaning sole profile, excellent shock absorption, injection moulded PU scuff cap, resistant to contact heat up to 300°C | brown water-resistant full grain leather **upper**, padded tongue and collar, closure system with metallic hooks and eyelets, reflective piping | GORE-TEX Extended Comfort Footwear membrane **lining** | metal-free **toe cap** | metal-free **penetration resistant midsole** | anatomically shaped **hygienic insole** with heel shock absorber | **weight 715 g** in size 42



SIZES **37 - 48** | EN ISO 20345 : 2011
ART. NO. 63953

MX 300 GT S3 CI HI WR HRO SRC

PU/rubber **sole**, excellent grip, oil, hydrocarbon and chemical resistant, self-cleaning sole profile, excellent shock absorption, injection moulded PU scuff cap, resistant to contact heat up to 300°C | water-resistant full grain leather **upper**, padded tongue and collar, closure system with metallic hooks and eyelets, reflective piping | membrane GORE-TEX Extended Comfort Footwear **lining** | metal-free **toe cap** | metal-free **penetration resistant midsole** | anatomically shaped **hygienic insole** with heel shock absorber | **weight 715 g** in size 42



outdoor work in humid conditions, construction, transportation networks, energy, chemical, forestry. 100 % waterproof (WR)

SIZES **37 - 48** | EN ISO 20345 : 2011
ART. NO. 63933





MX 500 S3 HI HRO SRC

PU/rubber **sole**, excellent grip, oil, hydrocarbon and chemical resistant, self-cleaning sole profile, excellent shock absorption. Injection moulded PU scuff cap, resistant to contact heat up to 300°C | water-resistant full grain leather **upper**, padded tongue and collar, closure system with non-metallic eyelets and zip, reflective piping and insert | 3D mesh **lining**, excellent breathability, quick drying | metal-free **toe cap** | metal-free **penetration resistant midsole** | anatomically shaped **hygienic insole** with heel shock absorber | **weight 760 g** in size 42

oil & gas, off-shore, construction,
outdoor work in humid conditions,
heavy industry, chemical

SIZES **37 - 48** | EN ISO 20345 : 2011
ART. NO. 63973





RUN-R

THE RUN-R RANGE TAKES ITS INSPIRATION FROM THE WORLD OF ROAD AND TRAIL RUNNING BOTH FOR ITS DESIGN AND IN THE TECHNOLOGIES AND PERFORMANCES IT OFFERS.

Ultra flexible, excellent slip resistance (SRC), microfibre uppers, quick lace system, 100 % metal-free toe caps, extremely low weight and premium hygienic insoles. This range is designed for crafts or tradesmen; warehousing and logistics and light industry workers.



01
TPU film
better abrasion resistance

02
**Clima management /
upper technologies**
3D mesh lining : excellent breathability

03
Stretch tongue
textile breathable tongue with stretch gusset for support, comfort and keeps dirt ans debris out



**Double density
PU sole**



SRC | oil, hydrocarbon & chemical resistant |
antistatic | highly flexible

French (EU) sizing system, width 11

- 01 grooves at the back of the heel for a better grip when the heel first touches the ground
- 02 dual density PU for excellent shock absorption
- 03 GRIPSTEP profile for ladders and stairs
- 04 self-cleaning sole profile increases slip resistance
- 05 sharp-edged tread profile improves grip
- 06 large ground-bearing surface
- 07 deep grooves for better grip in the forefoot area

Run-R insole

removable | anatomical | washable at 30°C



high quality microfibre top layer,
excellent abrasion resistance,
moisture absorption, quick drying,
shock absorption, arch support

bottom layer open cell
foam: good moisture absorption
and wicking properties, quick drying



Non-metallic penetration resistant midsole

resistance to penetration up to **1100 Newton** in accordance with the EN 20345 standard | **100 % composite** | flexible | **antimagnetic** | **protects 100 %** of the surface of the foot (as opposed to 85 % on average for steel soles) | **lighter** than steel soles | conducts less heat and cold than a metal sole



Non-metallic protective toe cap

provides protection against falling objects up to **200 j** and compression of up to **15000 Newton** in accordance with the EN 20345 standard | **100 % antimagnetic** | **comfortable** due to its ergonomic shape | extra wide | **20 % lighter** than a conventional steel toe cap | **conducts less** heat and cold than a metal toe cap





RUN-R 500 S1P SRC

double density PU **sole**, grip, oil, hydrocarbon and chemical resistant, self-cleaning sole profile, shock absorption | textile breathable **tongue** with stretch gusset for support, comfort and keeps dirt and debris out | lace **loop** to hold tongue in place | breathable **upper** mesh with TPU film in forefoot, heel and lacing areas for excellent abrasion resistance | 3D mesh polyester lining, excellent breathability, quick drying | metal-free **toe cap** | metal-free **penetration resistant midsole** | anatomically shaped **hygienic insole** with front and heel shock absorption | **weight 510 g** in size 42

metal-free model for tradesmen, light industry, warehousing and logistics, manufacturing, dry environments



**100 %
metal
free**

SIZES **35 – 48** | EN ISO 20345 : 2011
ART. NO. 62673



RUN-R 510 S1P SRC

double density PU **sole**, grip, oil, hydrocarbon and chemical resistant, self-cleaning sole profile, shock absorption | textile breathable **tongue** with stretch gusset for support, comfort and keeps dirt and debris out | lace **loop** to hold tongue in place | breathable **upper** mesh with TPU film in forefoot, heel and lacing areas for an excellent abrasion resistance | 3D mesh polyester lining, excellent breathability, quick drying | metal-free **toe cap** | metal-free **penetration resistant midsole** | anatomically shaped **hygienic insole** with front and heel shock absorption | **weight 510 g** in size 42

metal-free model for tradesmen, light industry, warehousing and logistics, manufacturing, dry environments



**100 %
metal
free**

SIZES **35 – 48** | EN ISO 20345 : 2011
ART. NO. 62683



510 g



RUN-R 520 S1P SRC

double density PU **sole**, grip, oil, hydrocarbon and chemical resistant, self-cleaning sole profile, shock absorption | textile **tongue** breathable with stretch gussets for support and comfort without any intrusion of materials | **loop** to adjust at best the position of the tongue | breathable **upper** mesh with TPU film in forefoot, heel and lacing areas for an excellent abrasion resistance | 3D mesh polyester **lining**, excellent breathability, quick drying | metal-free **toe cap** | metal-free **penetration resistant midsole** | anatomically shaped **hygienic insole** with front and heel shock absorption | **weight 510 g** in size 42



100 %
metal
free

metal-free model for tradesmen, light industry, warehousing and logistics, manufacturing, dry environments

SIZES **35 – 48** | EN ISO 20345 : 2011
ART. NO. 62693



SRC



RUN-R 530 S1P SRC

double density PU **sole**, grip, oil, hydrocarbon and chemical resistant, self-cleaning sole profile, shock absorption | textile **tongue** breathable with stretch gussets for support and comfort without any intrusion of materials | **loop** to adjust at best the position of the tongue | breathable **upper** mesh with TPU film in forefoot, heel and lacing areas for an excellent abrasion resistance | 3D mesh polyester **lining**, excellent breathability, quick drying | metal-free **toe cap** | metal-free **penetration resistant midsole** | anatomically shaped **hygienic insole** with front and heel shock absorption | **weight 510 g** in size 42



100 %
metal
free

metal-free model for tradesmen, light industry, warehousing and logistics, manufacturing, dry environments

SIZES **35 – 48** | EN ISO 20345 : 2011
ART. NO. 62703



RUN-R 100 LOW + HIGH S1P SRC

double density PU **sole**, grip, oil, hydrocarbon and chemical resistant, self-cleaning, sole profile, shock absorption | mesh **upper** and TPU support structure | 3D polyester mesh **lining** | metal-free **toe cap** | **penetration resistant** metal-free midsole | anatomically shaped **hygienic insole** with front and heel shock absorption | **speed lace system** (LOW) / standard laces are also supplied in the box (LOW) | **weight 480 g** (LOW) and **520 g** (HIGH) in size 42



**100%
metal
free**

metal-free model for tradesmen, light industry, warehousing and logistics, manufacturing, dry environments

SIZES **37 - 48** | EN ISO 20345 : 2011
ART. NO. 62583 (LOW)
62573 (HIGH)

RUN-R 110 LOW S1P SRC

double density PU **sole**, grip, oil, hydrocarbon and chemical resistant, self-cleaning, sole profile, shock absorption | mesh **upper** and TPU support structure | 3D polyester mesh **lining** | metal-free **toe cap** | **penetration resistant** metal-free midsole | anatomically shaped **hygienic insole** with front and heel shock absorption | **speed lace system** / standard laces are also supplied in the box | **weight 480 g** in size 42



**100%
metal
free**

metal-free model for tradesmen, light industry, warehousing and logistics, manufacturing, dry environments

SIZES **37 - 48** | EN ISO 20345 : 2011
ART. NO. 62633



RUN-R 210 S1P SRC

double density PU **sole**, grip, oil, hydrocarbon and chemical resistant, self-cleaning, sole profile, shock absorption | microfibre and TPU film **upper** | 3D polyester mesh **lining** | metal-free **toe cap** | **penetration resistant** metal-free midsole | anatomically shaped **hygienic insole** with front and heel shock absorption | **weight 490 g** in size 42

metal-free model for tradesmen, light industry, warehousing and logistics, manufacturing, dry environments

SIZES **37 – 48** | EN ISO 20345 : 2011
ART. NO. 62643



**100 %
metal
free**



RUN-R 200 S1P SRC

double density PU **sole**, grip, oil, hydrocarbon and chemical resistant, self-cleaning, sole profile, shock absorption | microfibre and TPU film **upper** | 3D polyester mesh **lining** | metal-free **toe cap** | **penetration resistant** metal-free midsole | anatomically shaped **hygienic insole** with front and heel shock absorption | **weight 490 g** in size 42

metal-free model for tradesmen, light industry, warehousing and logistics, manufacturing, dry environments

SIZES **37 – 48** | EN ISO 20345 : 2011
ART. NO. 62593



**100 %
metal
free**

METAL
FREE



S3



RUN-R 600 LOW S3 SRC

double density PU **sole**, grip, oil, hydrocarbon and chemical resistant, self-cleaning, sole profile, shock absorption | water-resistant brown and black full grain leather **upper** | full grain leather **tongue** with stretch gussets offering both support, comfort and keeps dirt and debris out | 3D mesh polyester **lining** | metal-free **toe cap** | metal-free **penetration resistant midsole** | anatomically shaped **hygienic insole** with front and heel shock absorption | **weight 550 g** in size 42



100%
metal
free



SIZES **35 – 48** | EN ISO 20345 : 2011
ART. NO. 67053

RUN-R 600 HIGH S3 SRC

double density PU **sole**, grip, oil, hydrocarbon and chemical resistant, self-cleaning, sole profile, shock absorption | water-resistant brown and black full grain leather **upper** | 3D mesh polyester **lining** | metal-free **toe cap** | metal-free **penetration resistant midsole** | anatomically shaped **hygienic insole** with front and heel shock absorption | **weight 600 g** in size 42



100%
metal
free



SIZES **35 – 48** | EN ISO 20345 : 2011
ART. NO. 67043



530^g



RUN-R 300 LOW + HIGH S3 SRC

double density PU **sole**, grip, oil, hydrocarbon and chemical resistant, self-cleaning, sole profile, shock absorption | embossed oiled nubuck **upper** | 3D polyester mesh **lining** | metal-free **toe cap** | **penetration resistant** metal-free midsole | anatomically shaped **hygienic insole** with front and heel shock absorption | **weight 530 g** (LOW) and **550 g** (HIGH) in size 42

metal-free model for tradesmen, industry, warehousing and logistics, manufacturing, local authorities, damp working conditions

SIZES **37 - 48** | EN ISO 20345 : 2011
ART. NO. 62603 (LOW)
62663 (HIGH)



100%
metal
free



SRC



RUN-R 400 LOW + HIGH S3 SRC

double density PU **sole**, grip, oil, hydrocarbon and chemical resistant, self-cleaning, sole profile, shock absorption | embossed full-grain leather **upper** | 3D polyester mesh **lining** | metal-free **toe cap** | **penetration resistant** metal-free midsole | anatomically shaped **hygienic insole** with front and heel shock absorption | **weight 540 g** (LOW) and **560 g** (HIGH) in size 42

metal-free model for tradesmen, industry, warehousing and logistics, manufacturing, local authorities, damp working conditions

SIZES **37 - 48** | EN ISO 20345 : 2011
ART. NO. 62653 (LOW)
62613 (HIGH)



100%
metal
free





SUXXEED OFFROAD

THE SUXXEED OFFROAD RANGE HAS BEEN DEVELOPED TO WITHSTAND THE DEMANDS OF THOSE WORKING IN RUGGED OUTDOOR ENVIRONMENTS SUCH AS THE BUILDING TRADES.

The outdoor design, all-terrain sole and injection moulded polyurethane scuff cap are designed specifically for the demands of those working in more challenging workplaces.



01
Closure system
non-metallic eyelets and hooks

02
Few lateral seams
limits pressure points when bending
for increased comfort | improves liquid
penetration resistance

03
Injected moulded PU scuff cap
extends product life | ideal for people that spend
time kneeling



PU2D sole

SRC | resistance to **oils & hydrocarbons, chemicals** |
antistatic | optimum **flexibility & shock absorption**

French (EU) sizing system, width 11

- 01** rear grooves improve adhesion during first contact
of heel to floor
- 02** PU comfort layer for excellent shock absorption
- 03** pronounced heel
- 04** GRIPSTEP profile for extra grip on ladders & stairs
- 05** sharp tread profile improves grip
- 06** all-terrain profile with deep cleats
- 07** self-cleaning profile increases slip resistance
- 08** front grooves for better grip

Insole

anatomically shaped | antistatic



textile over layer: very good
abrasion resistance | absorbant |
fast drying

bottom layer open cell foam: very high
moisture absorption capacity, fast
drying



Non-metallic penetration resistant midsole

resistance to penetration up to **1100 Newton** in accordance with the EN
20345 standard | **100 % composite** | flexible | **antimagnetic** | **protects**
100 % of the surface of the foot (as opposed to 85 % on average for steel
soles) | **lighter** than steel soles | conducts less heat and cold than a metal
sole



Non-metallic protective toe cap

provides protection against falling objects up to **200 j** and compression
of up to **15000 Newton** in accordance with the EN 20345 standard | **100 %**
antimagnetic | **comfortable** due to its ergonomic shape | extra wide | **20 %**
lighter than a conventional steel toe cap | **conducts less** heat and cold than a
metal toe cap





S3



METAL
FREE



SUXXEED OFFROAD S3 HIGH + LOW S3 CI SRC

double density PU **sole**, excellent grip, oil, hydrocarbon and chemical resistant, self-cleaning sole profile, excellent shock absorption, injection moulded PU scuff cap | water-resistant brown oiled grain leather **upper**, microfibre insert, water-resistant tongue and collar, reflective elements, non-metallic eyelets and hooks | 3D mesh **lining**, excellent breathability, quick drying | metal-free **toe cap** | metal-free **penetration resistant midsole** | anatomically shaped **hygienic insole** with bottom layer open cell foam, very high moisture absorption capacity, fast drying | **weight 610 g** in size 42



100 %
metal
free



metal-free model for building and construction, general industry, energy, logistics, maintenance, utilities, damp working conditions

SIZES **36 – 48** | EN ISO 20345 : 2011
ART. NO. 62743 (LOW)
62733 (HIGH)

SUXXEED OFFROAD BLACK S3 HIGH S3 CI SRC

double density PU **sole**, excellent grip, oil, hydrocarbon and chemical resistant, self-cleaning sole profile, excellent shock absorption, injection moulded PU scuff cap | water-resistant black oiled grain leather **upper**, microfibre insert, water-resistant tongue and collar, reflective elements, non-metallic eyelets and hooks | 3D mesh **lining**, excellent breathability, quick drying | metal-free **toe cap** | metal-free **penetration resistant midsole** | anatomically shaped **hygienic insole** with bottom layer open cell foam, very high moisture absorption capacity, fast drying | **weight 640 g** in size 42



100 %
metal
free



metal-free model for building and construction, general industry, energy, logistics, maintenance, utilities, damp working conditions

SIZES **36 – 48** | EN ISO 20345 : 2011
ART. NO. 62703



SUXXEED OFFROAD BLACK INOX S3 LOW S3 CI SRC

double density PU **sole**, excellent grip, oil, hydrocarbon and chemical resistant, self-cleaning sole profile, excellent shock absorption, injection moulded PU scuff cap | water-resistant black oiled grain leather **upper**, microfibre insert, water-resistant tongue and collar, reflective elements, non-metallic eyelets and hooks | 3D mesh **lining**, excellent breathability, quick drying | metal-free **toe cap** | stainless steel **penetration resistant midsole** | anatomically shaped **hygienic insole** with bottom layer open cell foam, very high moisture absorption capacity, fast drying | **weight 660 g** in size 42

P 044

model for building and construction, general industry, energy, logistics, maintenance, utilities, damp working conditions

SIZES **36 – 48** | EN ISO 20345 : 2011
ART. NO. 67223



SUXXEED OFFROAD BLACK INOX S3 HIGH S3 CI SRC

double density PU **sole**, excellent grip, oil, hydrocarbon and chemical resistant, self-cleaning sole profile, excellent shock absorption, injection moulded PU scuff cap | water-resistant black oiled grain leather **upper**, microfibre insert, water-resistant tongue and collar, reflective elements, non-metallic eyelets and hooks | 3D mesh **lining**, excellent breathability, quick drying | metal-free **toe cap** | stainless steel **penetration resistant midsole** | anatomically shaped **hygienic insole** with bottom layer open cell foam, very high moisture absorption capacity, fast drying | **weight 690 g** in size 42

model for building and construction, general industry, energy, logistics, maintenance, utilities, damp working conditions

SIZES **36 – 48** | EN ISO 20345 : 2011
ART. NO. 67213





SUXXEED OFFROAD S3 SNOW S3 CI SRC

double density PU **sole**, excellent grip, oil, hydrocarbon and chemical resistant, self-cleaning sole profile, excellent shock absorption, injection moulded PU scuff cap | water-resistant brown oiled grain leather **upper**, microfibre insert, reflective elements | fleece **lining** | metal-free **toe cap** | metal-free **penetration resistant midsole** | anatomically shaped **hygienic insole** with bottom layer open cell foam, very high moisture absorption capacity, fast drying | **weight 780 g** in size 42

metal-free winter boot for building and construction, general industry, energy, logistics, maintenance, utilities, damp working conditions

SIZES **36 - 48** | EN ISO 20345 : 2011
ART. NO. 62753



**100%
metal
free**





MACSOLE® SPORT 2.0

MACSOLE® SPORT 2.0 IS THE IDEAL RANGE FOR PEOPLE LOOKING FOR A LIGHTWEIGHT, ANTIMAGNETIC PRODUCT, DESIGNED LIKE A SPORTS SHOE.

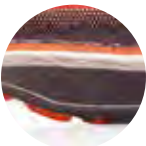
Made for working in the fields of transport (couriers, drivers), logistics (forklift truck drivers, warehouses, messaging platforms) and light industry. The addition of reflective inserts help to increase the safety of night workers.

TECHNOLOGIES
MACSOLE® SPORT 2.0



01
Sole extends up the heel
to facilitate driving

02
EVA foam
excellent shock absorption and lightness



03
Scuff cap
extends product life | ideal for people that spend time kneeling

MACSOLE® X | RUN-R | SUXXEED OFFROAD | **MACSOLE® SPORT 2.0** | MACSOLE® ADVENTURE 2.0 | XXL PRO | SUXXEED | MACSOLE® 1.0 | FLAG | FOCUS | MACSOLE® EXTREM 2.0



MACSOLE® EVA / rubber sole

SRA | oil, hydrocarbon & chemical resistant | heat resistant outsole up to 300°C (HRD) | antistatic

Sizing system Mondopoint R2, width 11



01 sharp tread profile
02 self-cleaning sole profile increases slip resistance
03 wide ground-bearing surface
04 sharp tread profile improves grip

Cell tech hygienic insole

removable | anatomically shaped



textile top layer and large perforations for easy wicking of moisture

EVA cell structure



Non-metallic penetration resistant midsole

resistance to penetration up to **1100 Newton** in accordance with the EN 20345 standard | **100 % composite** | flexible | **antimagnetic** | **protects 100 %** of the surface of the foot (as opposed to 85 % on average for steel soles) | **lighter** than steel soles | conducts less heat and cold than a metal sole



Non-metallic protective toe cap


provides protection against falling objects up to **200 j** and compression of up to **15000 Newton** in accordance with the EN 20345 standard | **100 % antimagnetic** | **comfortable** due to its ergonomic shape | extra wide | **20 % lighter** than a conventional steel toe cap | **conducts less** heat and cold than a metal toe cap





MACJUMP 2.0 S3 HRD SRA



EVA / MACSOLE® SPORT 2.0 rubber **sole** | liquid-resistant full-grain leather **upper**, solid PVC scuff cap, reflectors | mesh **lining** | metal-free **toe cap** | **penetration resistant** metal-free midsole | CELL TECH **hygienic insole** | **weight 610 g** in size 42





wet environments, jobs in logistics, transport, light industry, services, local authorities, craft industries, second fit trades

SIZES **36 – 48** | EN ISO 20345 : 2011

ART. NO. 63013




100 % metal free



MACPULSE 2.0 S3 HRD SRA



EVA / MACSOLE® SPORT 2.0 rubber **sole** | liquid-resistant full-grain leather **upper**, solid PVC scuff cap, reflectors | mesh **lining** | metal-free **toe cap** | **penetration resistant** metal-free midsole | CELL TECH **hygienic insole** | **weight 590 g** in size 42





wet environments, jobs in logistics, transport, light industry, services, local authorities, craft industries, second fit trades

SIZES **36 – 48** | EN ISO 20345 : 2011

ART. NO. 62023



100 % metal free





MACMOVE 2.0 S1P HRO SRA + MACSPEED 2.0 S1P HRO SRA

EVA / MACSOLE® SPORT 2.0 rubber **sole** | suede and textile **upper**, solid PVC scuff cap, reflectors | mesh **lining** | metal-free **toe cap** | **penetration resistant** metal-free midsole | CELL TECH **hygienic insole** | **weight 610 g** (MACMOVE) and **590 g** (MACSPEED) in size 42

dry environments, jobs in logistics, transport, light industry, services, local authorities, craft industries, second fit trades

SIZES **36-48** | EN ISO 20345 : 2011
ART. NO. 63003 (MACMOVE)
62003 (MACSPEED)



100 %
metal
free



MACAIR 2.0 S1P HRO SRA

EVA / MACSOLE® SPORT 2.0 rubber **sole** | breathable suede **upper** with large perforations, solid PVC scuff cap, reflectors | adjustable strap with fast opening and closing system | mesh **lining** | metal-free **toe cap** | **penetration resistant** metal-free midsole | CELL TECH **hygienic insole** | **weight 570 g** in size 42

hot dry environments, jobs in logistics, transport, light industry, services, local authorities, craft industries, second fit trades

SIZES **36 - 48** | EN ISO 20345 : 2011
ART. NO. 62033



100 %
metal
free





MACSOLE® ADVENTURE 2.0

THE ANTIMAGNETIC MACSOLE® ADVENTURE 2.0 RANGE IS DEDICATED TO DEMANDING WORK ENVIRONMENTS AND ANYONE LOOKING FOR AN AUTHENTIC OUTDOOR DESIGN.

Its deep tread, rubber-covered toe cap, lateral support together with its reinforced cast iron ankle support system make it the most versatile range bar none.

TECHNOLOGIES
MACSOLE® ADVENTURE 2.0



01
Reinforced at the back and sides
better supports the foot and heel | limits the risk of sprains

02
Rubber scuff cap
high abrasion resistance | extends product life | suitable for those working in a crouching or kneeling position

MACSOLE® X | RUN-R | SUXXEED OFFROAD | MACSOLE® SPORT 2.0 | **MACSOLE® ADVENTURE 2.0** | XXL PRO | SUXXEED | MACSOLE® 1.0 | FLAG | FOCUS | MACSOLE® EXTREM 2.0



**MACSOLE®
rubber sole**

SRC | oil, hydrocarbon & chemical resistant | heat resistant outsole up to 300°C (HRO) | antistatic

Sizing system Mondopoint R2, width 11



- 01** defined heel with sharp edges
- 02** sharp tread profile improves grip
- 03** all-terrain profile with deep treads
- 04** self-cleaning profile increases slip resistance
- 05** wide ground-bearing surface
- 06** excellent abrasion and cut resistance

**Cell tech hygienic
insole**

removable | anatomically shaped



textile top layer and large perforations for easy wicking of moisture



Non-metallic penetration resistant midsole

resistance to penetration up to 1100 Newton in accordance with the EN 20345 standard | 100 % composite | flexible | antimagnetic | protects 100 % of the surface of the foot (as opposed to 85 % on average for steel soles) | lighter than steel soles | conducts less heat and cold than a metal sole



Non-metallic protective toe cap

provides protection against falling objects up to 200 j and compression of up to 15000 Newton in accordance with the EN 20345 standard | 100 % antimagnetic | comfortable due to its ergonomic shape | extra wide | 20 % lighter than a conventional steel toe cap | conducts less heat and cold than a metal toe cap





WR



SRC



MACEXPEDITION LOW 2.0 + 2.0 S3 CI HI WR HRO SRC

MACSOLE® ADVENTURE 2.0 rubber **sole** | textile **upper**, rubber scuff cap | reinforced heel and sides | GORE-TEX **lining** | metal-free **toe cap** | **penetration resistant** metal-free midsole | anatomically shaped POLIYOU PU hygienic insole with shock absorption under the heel and ball of the foot | **weight 710 g** (LOW 2.0) and **720 g** (2.0) in size 42

100 % metal-free model for humid outdoor environments, forestry

SIZES **36 – 48** | EN ISO 20345 : 2011
ART. NO. 62123 (LOW 2.0)
63233 (2.0)



100 %
metal
free



MACWILD LOW 2.0 + 2.0 S1P CI HI HRO SRC

MACSOLE® ADVENTURE 2.0 rubber **sole** | suede and textile **upper**, rubber scuff cap, reinforced heel and sides | mesh **lining** | metal-free **toe cap** | **penetration resistant** metal-free midsole | CELL TECH hygienic insole | **weight 680 g** (LOW 2.0) and **690 g** (2.0) in size 42

100 % metal-free model for working on uneven terrain, dry environments

SIZES **36 – 48** | EN ISO 20345 : 2011
ART. NO. 62103 (LOW 2.0)
63213 (2.0)



100 %
metal
free





MACCROSSROAD BROWN 2.0 S3 CI HI HRO SRC

MACSOLE® ADVENTURE 2.0 rubber **sole** | liquid-resistant full-grain leather **upper**, rubber scuff cap, reinforced heel and sides | mesh **lining** | metal-free **toe cap** | **penetration-resistant** metal-free midsole | CELL TECH **hygienic insole** | **weight 730 g** in size 42



100 %
metal
free



SIZES **36 - 48** | EN ISO 20345 : 2011
ART. NO. 63893

MACCROSSROAD LOW 2.0 + 2.0 S3 CI HI HRO SRC

MACSOLE® ADVENTURE 2.0 rubber **sole** | liquid-resistant full-grain leather **upper**, rubber scuff cap, reinforced heel and sides | mesh **lining** | metal-free **toe cap** | **penetration resistant** metal-free midsole | CELL TECH **hygienic insole** | **weight 720 g** (LOW 2.0) and **730 g** (2.0) in size 42



100 %
metal
free



SIZES **36 - 48** | EN ISO 20345 : 2011
ART. NO. 62113 (LOW 2.0)
63223 (2.0)



XXL PRO

THE XXL PRO RANGE IS THE OPTIMUM SOLUTION FOR PEOPLE WORKING IN HEAVY CONSTRUCTION OR QUARRIES.

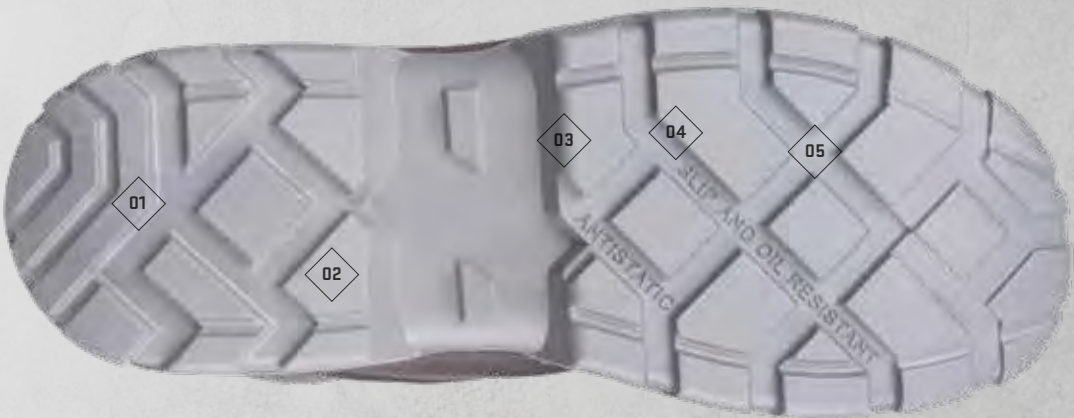
Its wraparound soles made of dual density PU combined with leathers that are very resistant to abrasion and liquids, provide protection for users up to +360°C.



01
Soft comfort
collar made of flexible synthetic material |
thick comfortable foam | 3D mesh lining

02
**Wraparound double density
PU sole**
tough | protects against liquids and mud |
stabilises and supports the ankle |
exceptional **shock absorption** properties
(over 40J)

03
Injection moulded PU overcap
extends product life | suitable for those
working in a **crouching or kneeling position**



**Double density
PU sole**

SRC | oil, hydrocarbon & chemical resistant |
antistatic

Sizing system Mondopoint R2, width 11

- 01** grooves at the back of the heel for a better grip
when the heel first touches the ground
- 02** defined heel with sharp edges
- 03** self-cleaning sole profile increases slip resistance
- 04** sharp tread profile
- 05** deep treads



microfibre top layer | very good
abrasion resistance and moisture
absorption, quick drying

**HYDROFLEX
insole**

removable | anatomically shaped |
antistatic | contains no hazardous
substances

bottom layer open cell foam : good
moisture absorption and wicking properties,
quick drying | shock absorption under the
ball of the feet



SRC



S3



TETRA PRO S3 CI SRC

double density PU **sole** | full-grain pigmented liquid-resistant leather **upper**, waterproof leather gusset | 3D-Distance-Mesh **lining** | steel **toe cap** | **penetration resistant** stainless steel midsole | hygienic hydroflex **insole** | **weight 650 g** in size 42

building and construction,
quarries

SIZES **38 - 48** | EN ISO 20345 : 2011
ART. NO. 62783



ALPHA PRO S3 CI SRC

double density PU **sole** | full-grain pigmented liquid-resistant leather **upper**, waterproof leather gusset | 3D-Distance-Mesh **lining** | steel **toe cap** | **penetration resistant**, stainless steel midsole | **hygienic** hydroflex **insole** | **weight 750 g** in size 42

building and public services,
construction and civil engineering,
quarries

SIZES **38 - 48** | EN ISO 20345 : 2011
ART. NO. 63913





SUXXEED

**THE SUXXEED RANGE IS CHARACTERISED
BY SUPERB SHOCK ABSORPTION
AND EXCEPTIONAL GRIP WHATEVER THE
WEATHER, WHATEVER THE SURFACE.**

The products in the SUXXEED range are designed for industry, trades, logistics, collective services, maintenance and industrial cleaning.



01
Soft comfort
flexible collar | thick comfortable foam | Climate Airmesh lining

02
Double density PU sole
excellent shock absorption and very low weight




**Double density
PU sole**


turn off hyphenation | SRC | oil, hydrocarbon & chemical resistant | antistatic | excellent shock absorption | very light

French (EU) sizing system, width 11

01 grooves at the back of the heel for a better grip when the heel first touches the ground
02 self-cleaning sole profile increases slip resistance
03 sharp tread profile
04 wide ground-bearing surface

 **Non-metallic penetration resistant midsole**
resistance to penetration up to **1100 Newton** in accordance with the EN 20345 standard | **100 % composite** | flexible | **antimagnetic** | **protects 100 %** of the surface of the foot (as opposed to 85 % on average for steel soles) | **lighter** than steel soles | conducts less heat and cold than a metal sole



 **Non-metallic protective toe cap**
provides protection against falling objects up to **200 j** and compression of up to **15000 Newton** in accordance with the EN 20345 standard | **100 % antimagnetic** | **comfortable** due to its ergonomic shape | extra wide | **20 % lighter** than a conventional steel toe cap | **conducts less** heat and cold than a metal toe cap





SUXXEED S1P LOW S1P SRC

double density PU **sole** | ultra breathable suede **upper**, perforations for perfect ventilation | Climate Airmesh **lining** | metal-free **toe cap** | **penetration resistant** metal-free midsole | removable **hygienic insole** with abrasion-resistant textile top layer | **weight 585 g** in size 42

metal-free model, very lightweight and flexible. Suitable for tradesmen, warehousing and logistics, services, industry, hot environments, dry environments

SIZES **38 – 47** | EN ISO 20345 : 2011
ART. NO. 62563



**100 %
metal
free**

SUXXEED S3 LOW + S3 S3 SRC

double density PU **sole** | oiled hydro suede **leather** upper resistant to liquid penetration, collar and gusset in water-repellent fabric, fabric eyelets | Climate Airmesh **lining** | metal-free **toe cap** | **penetration resistant** metal-free midsole | removable **insole**, top in abrasion-resistant fabric | **weight 570 g** (S3 LOW) and **615 g** (S3) in size 42

metal-free model, very lightweight and flexible. Suitable for tradesmen, heavy industry, warehousing and logistics, services, humid environments

SIZES **35 – 47** | EN ISO 20345 : 2011
ART. NO. 62553 (S3 LOW)
63903 (S3)



**100 %
metal
free**





MACSOLE®
1.0

DESIGNED FOR THE CONSTRUCTION INDUSTRY, WORKING IN HUMID ENVIRONMENTS OR ON HOT GROUND, STEELMAKING OR ENGINEERING SHOPS, THIS RANGE IS EXCEPTIONALLY COMFORTABLE AND CAPABLE OF WITHSTANDING THE HARSHTEST CONDITIONS, DUE TO THE MACSOLE® 1.0 SOLE TECHNOLOGY.

The combination of PU (shock absorption, low weight) and rubber (durable, versatile, slip resistance) provides excellent weather resistance as well as meeting users' expectations on sturdiness and weight.



01
Modular sole system
excellent stability | shock absorption | contains **no products harmful** to the skin | washable | removable insole | optimum comfort | reduces the impact on the foot joints and the spine

02
Non-metallic protective toe cap
provides protection against falling objects up to **200 joules** and compression of up to **15000 Newton** in accordance with the EN 20345 standard | **100 % antimagnetic** | comfortable due to its ergonomic shape | extra wide | **20 % lighter** than a conventional steel toe cap | conducts less heat and cold than a metal toe cap



**MACSOLE®
rubber sole**

oil, hydrocarbon & chemical resistant | heat resistant | antistatic | durability | stability

Sizing system Mondopoint R2, width 11

STANDARD SOLE

- 01** MICROGRIP profile for good slip resistance even in winter
- 02** defined heel with sharp edges
- 03** GRIPSTEP profile for ladders and stairs
- 04** sharp tread profile
- 05** self-cleaning sole profile
- 06** slip-resistant to SRC standard
- 07** wide ground-bearing surface
- 08** rubber overcap



MACSOLE® 1.0 NTX SOLE

- 01** slightly grained walking sole | slip-resistant to SRA standard
- 02** smooth sole to avoid leaving tread marks on asphalt

MACSOLE® 1.0 XCB hygienic insole

removable | anatomically shaped | antistatic | washable at 30°C | good skin tolerability: Oeko-Tex® certified material Standard 100



- 01** very good shock absorption to reduce the impact on the foot joints and spine
- 02** soft surface material | adapts to the shape of the foot
- 03** stability | anatomically shaped | arch support system
- 04** dynamic shock absorption | thin structure improves the dynamics on the underneath of the foot | reduces fatigue
- 05** high breathability | perforations improve ventilation



SRC



S3



MACSOLE® 1.0 INH S3 CI HI HRO SRC

MACSOLE® 1.0 rubber **sole** | pigmented leather **upper**, reflectors, derby cut fits any foot, fewer seams | coagulated PU collar | mesh **lining**, high abrasion resistance, efficient moisture wicking, quick drying | metal-free **toe cap** | **penetration resistant** midsole, stainless steel | **hygienic and comfortable** MACSOLE® 1.0 XCB insole | **weight 770 g** in size 42



very versatile model for construction and civil engineering, hot ground, humid environments

SIZES **36 – 48** | EN ISO 20345 : 2011
ART. NO. 62903











MACSOLE® 1.0 FXL + FXH S3 CI HI HRO SRC


MACSOLE® 1.0 rubber **sole** | full-grain leather **upper**, reflectors, derby cut fits any foot, fewer seams | waterproof leather collar and gusset | plastic eyelets | mesh **lining**, high abrasion resistance, efficient moisture wicking, quick drying | metal-free **toe cap** | **penetration resistant** metal-free midsole | **hygienic and comfortable** MACSOLE® 1.0 XCB insole | **weight 680 g (FXL) and 730 g (FXH)** in size 42




very versatile non-magnetic model for construction and civil engineering, public services, hot ground, humid environments


SIZES **36 – 48** | EN ISO 20345 : 2011
ART. NO. 62513 (FXL)
62923 (FXH)





100% metal free








MACSOLE® 1.0 NTX SBP WRU HI HRO SRA

MACSOLE® 1.0 smooth rubber **sole** | pigmented leather **upper**, reflectors, derby cut fits any foot, fewer seams | leather gusset | mesh **lining**, high abrasion resistance, efficient moisture wicking, quick drying | metal-free toe cap | **penetration resistant** stainless steel midsole | **hygienic and comfortable** MACSOLE® 1.0 ETC insole | **weight 780 g** in size 42




SIZES **38 - 48** | EN ISO 20345 : 2011
ART. NO. 62993

for asphalting








MACSOLE® 1.0 WLD LOW + WLD 3 S3 CI HI-1 HRO WG SRC

MACSOLE® 1.0 rubber **sole** | pigmented leather **upper**, seams sewn with flame-resistant Kevlar®, pigmented leather anti-projection flap with a double Velcro fastening | fewer seams | waterproof grain leather gusset | black high abrasion resistant, non-woven fabric **lining** | metal-free **toe cap** | **penetration resistant** stainless steel midsole | **hygienic and comfortable** MACSOLE® 1.0 XCB insole | **weight 810 g** in size 42



SIZES **38 - 48** | EN ISO 20349 : 2010
ART. NO. 62963 (WLD LOW)
62543 (WLD 3)

for welding, steelworks and workplaces where there is a risk of molten metal splash





MACSOLE® 1.0 BFX1 S3 CI HI HRO SRC

MACSOLE® 1.0 rubber **sole** | brown oiled full-grain leather pull-up boot **upper**, fewer seams | **lining**: black high abrasion-resistant non-woven fabric (BFX1) | metal-free **toe cap** | **penetration resistant** metal-free midsole | **hygienic and comfortable** MACSOLE® 1.0 XCB insole | **weight 820 g** in size 42



100%
metal
free



SIZES **36 - 48** | EN ISO 20345 : 2011
ART. NO. 62933

MACSOLE® 1.0 BFX2 (HIVER) S3 CI HI HRO SRC

MACSOLE® 1.0 rubber **sole** | brown oiled full-grain leather pull-up boot **upper**, fewer seams | **lining**: black high abrasion-resistant fleece | metal-free **toe cap** | **penetration resistant** metal-free midsole | **hygienic and comfortable** MACSOLE® 1.0 XCB insole | **weight 830 g** in size 42



100%
metal
free



SIZES **36 - 48** | EN ISO 20345 : 2011
ART. NO. 62973



FLAG

THE FLAG RANGE OFFERS DESIGN, FLEXIBILITY AND SAFETY.

Suitable for use in a range of applications from light industry to forestry, its dual density PU sole, combined with the non-magnetic polycap toe cap and perfosafe penetration resistant midsole, guarantees comfort, stability and complete protection. A classic from Heckel.



S3



METAL
FREE

FLAG COBALT S3 CI SRA

double density PU **sole** | liquid-resistant grain leather **upper** | padded waterproof leather gusset | black mesh **lining**, efficient moisture wicking, quick drying | metal-free **toe cap** | **penetration resistant** metal-free midsole | anatomically shaped EVA **hygienic insole** covered with mesh | **weight 650 g** in size 42

100% metal-free multi-purpose model for industry, construction, outdoor work, humid environments

SIZES **38 – 48** | EN ISO 20345 : 2011
ART. NO. 62223



100%
metal
free



FLAG TITANE S3 CI SRA

double density PU **sole** | liquid-resistant grain leather **upper** | padded waterproof leather gusset | black mesh **lining**, efficient moisture wicking, quick drying | metal-free **toe cap** | **penetration resistant** metal-free midsole | anatomically shaped EVA **hygienic insole** covered with mesh | **weight 690 g** in size 42

100% metal-free multi-purpose model for industry, construction, outdoor work, humid environments

SIZES **38 – 48** | EN ISO 20345 : 2011
ART. NO. 63463



100%
metal
free





FOCUS

THE FOCUS RANGE IS VERSATILE, STURDY AND ECONOMICAL. IT WAS DEVELOPED TO MEET THE DEMANDS OF A RANGE OF PROFESSIONS FROM LIGHT INDUSTRY TO CONSTRUCTION.

The dual density PU sole integrates the latest technology to offer wearers optimum performance.



FOCUS SANDAL + PERFO S1 SRA

double density PU **sole** | ultra-breathable suede and grain leather **upper**, large perforations for perfect ventilation, Velcro fastening (SANDAL) / ultra-breathable suede **upper**, perforations for perfect ventilation (PERFO) | padded heel collar and gusset | optimum support for the foot | orange mesh **lining**, efficient moisture wicking, quick drying | metal-free **toe cap** | anatomically shaped EVA **hygienic insole** with mesh top and shock absorber in the heel | **weight 590 g** (SANDAL) and **540 g** (PERFO) in size 42



100 %
metal
free

SIZES **36 – 48** | EN ISO 20345 : 2011
ART. NO. 62460 (SANDAL)
62470 (PERFO)

FOCUS LOW + HIGH S3 SRA

double density PU **sole** | liquid-resistant grain leather **upper** | oiled nubuck overcap | padded heel collar and gusset | orange mesh **lining**, efficient moisture wicking, quick drying | steel **toe cap** | **penetration resistant** stainless steel midsole | anatomically shaped EVA **hygienic insole** with mesh top and shock absorber in the heel | **weight 650 g** (HIGH) and **610 g** (LOW) in size 42



construction, industry, outdoor
works, humid environments

SIZES **36 – 48** | EN ISO 20345 : 2011
ART. NO. 62453 (LOW)
63853 (HIGH)



S3

GUARDIAN 1 S3 SRA

double density PU **sole** | liquid-resistant oiled grain leather **upper** | black mesh **lining**, efficient moisture wicking, quick drying | steel toe cap | penetration resistant stainless steel midsole | anatomically shaped EVA **hygienic insole** with mesh top | weight **815 g** in size 42

construction, industry, outdoor work, humid environments

SIZES **39 – 47** | EN 20345 : 2011
ART. NO. 63543



WIN-
-TER

GUARDIAN 2 (WINTER) S3 SRA

double density PU **sole** | liquid-resistant oiled grain leather **upper** | fleece **lining** for thermal insulation | steel **toe cap** | **penetration resistant** stainless steel midsole | anatomically shaped EVA **hygienic insole** with mesh top | weight **855 g** in size 42

construction, industry, outdoor work, humid environments, winter conditions

SIZES **39 – 47** | EN 20345 : 2011
ART. NO. 63523





MACSOLE® EXTREM 2.0

**WHEREVER RISKS ARE HIGH,
ENVIRONMENTS HARSH OR CONDITIONS
EXTREME, MACSOLE® EXTREM 2.0
RUBBER SOLE TECHNOLOGY IS THE
BESTPERFORMING SOLUTION.**

The MACSOLE® rubber sole technology, performs in high risk environments without compromising comfort. Exceptional grip, resistance to extreme temperatures, resistance to aggressive chemicals and shock absorption all come as standard.



MACSILVER 2.0 S3 CI HI HRO SRC

MACSOLE® EXTREM 2.0 rubber **sole** | full-grain leather **upper**, reflective elements, derby cut fits any foot, fewer seams for greater comfort, padded tongue and collar | 3D-Distance-Mesh **lining** | metal-free **toe cap** | **penetration resistant** metal-free midsole | Thermoshield® Xtrem **hygienic insole** with thermal insulation, anatomically shaped footbed, moisture absorption system, shock absorber | **weight 840 g** in size 42



heavy industry, construction, engineering shops, asphalt, hot conditions, humid environments

SIZES **36 – 48** | EN ISO 20345 : 2011
ART. NO. 62803



MACSILVER INTEGRAL 2.0 S3 M CI HI HRO SRC

MACSOLE® EXTREM 2.0 rubber **sole** | full-grain leather **upper**, reflective elements, derby cut fits any foot, fewer seams for greater comfort, padded tongue and collar | totally painless 100J **metatarsal protection** | 3D-Distance-Mesh **lining** | metal-free **toe cap** | **penetration resistant** metal-free insole | Thermoshield® Xtrem **hygienic insole** with thermal insulation, anatomically shaped footbed, moisture absorption system, shock absorber | **weight 880 g** in size 42



risk of objects falling on the metatarsals, work with high pressure cleaners, steelworks, foundries

SIZES **36 – 48** | EN ISO 20345 : 2011
ART. NO. 62883



ACCESSORIES



RUN-R INSOLE

approved for **RUN-R** and **SUXXEED OFFROAD** ranges | **anatomically** shaped | **antistatic** system | **washable** at 30°C | **shock absorption** in heel and forefoot areas | **arch support** | high quality microfibre top layer, excellent **abrasion resistance**, **moisture absorption**, **quick drying** | bottom layer open cell foam: **good moisture absorption** and **wicking properties**, **quick drying**

SIZES **37 – 48**
ART. NO. 62997



INSOLE SUXXEED

approved for the **SUXXEED** range | **anatomically** shaped | **antistatic** system | **washable** at 40°C | **shock absorption** | textile surface structure | EVA foam

SIZES **35 – 47**
ART. NO. 62996



MACSOLE 1.0 XCB (STANDARD CONDITIONS)
+ ETC (THERMAL INSULATION)

XCB: PU removable sole, anatomically shaped, antistatic, microfibre upper, perforated | packaging: sold by size and individually wrapped | **weight 65 g** in size 42

SIZES **36 – 48**
ART. NO. 62999



ETC: aluminisated removable sole, anatomically shaped, antistatic | memory foam | activated carbon anti-odour treatment | **weight 50 g** in size 42

SIZES **38 – 48**
ART. NO. 62998



UVEX 3D HYDROFLEX® FOAM

approved for the **MACSOLE ADVENTURE 2.0** range | uvex insole **new generation** | additional shock **absorbing elements** in the heel and under the front of the foot | **highly breathable** and moisture-absorbing materials | perforations to **improve ventilation** | **shock absorption** zones to support natural movement | **non-irritating**, comfortable surface structure | **antistatic** system | supports the foot arch

SIZES **35 – 50**
ART. NO. 9595.6



SOCKS

colour black | **composition** 77 % cotton 21 % polyamide 2 % elastane | available in **2 sizes** 37/41 or 42/46 | **individual packaging** | suitable for retail

ART. NO. 5000705 (P37/41)
5000706 (P42/46)



SAMPLE BAG

colour black | with a **dual compartment** | **dimensions** 75 × 41 × 28 cm

ART. NO. 6300012



SHELF DISPLAY

material expanded 5 mm PVC | dimension 300×120×250 mm | fixing 4 adhesive transparent pads

ART. NO. 1051086



RETAIL BENCH

colour black | dimensions 100×40 x 40 mm | weight 5 kg | imitation leather 550 g outside

ART. NO. 1051083



COUNTER DISPLAY

structure plexi | height 322 mm | presentation of 1 shoe

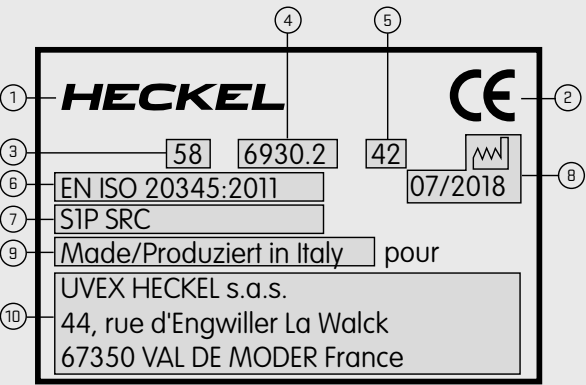
ART. NO. 1051055

PLASTIC DISPLAY MATERIAL

structure steel structure | plastic display material | height 185 cm | presentation on 2 sides | total 10 shoes | manually build with building tools included in delivery

ART. NO. 1051122

STANDARDS



The marking on the shoe includes the following specifications

- ① Manufacturer's identification mark
- ② CE symbol
- ③ Manufacturer's reference number
- ④ Article number
- ⑤ Size
- ⑥ Number of European standard
- ⑦ Symbol of protection
- ⑧ Date of manufacture in month/year format
- ⑨ Country of origin
- ⑩ Manufacturer's address

Any model certified after December 2007 must meet one of the three criteria below and be marked with the corresponding symbol

Label	Characteristics tested	Test conditions	Friction coefficient
SRA	Slip resistance on ceramic tile floors with sodium lauryl sulfate solution (SLS)	Forward slip of the heel Forward slip on a flat surface	→ 0,28 → 0,32
SRB	Slip resistance on steel floors with glycerol	Forward slip of the heel Forward slip on a flat surface	→ 0,13 → 0,18
SRC	Slip resistance on ceramic tile floors with sodium lauryl sulfate solution and on steel floors with glycerol	SRA and SRB	

* Penetration resistance (marked P or S3 on the label) - Warning: Please note that the penetration resistance of this footwear has been measured in the laboratory using a truncated nail of diameter 4.5 mm and a force of 1100 N. Higher forces or nails of smaller diameter will increase the risk of penetration occurring. In such circumstances alternative preventative measures should be considered.

FOOTWEAR SYMBOLS FOR INDUSTRIAL USAGE

basic requirements/additional requirements / categories e.g. for leather shoes	Safety footwear EN ISO 20345	Protective footwear EN ISO 20346	Work footwear EN ISO 20347	The use to which the different shoes are put depends on the type of hazard. Additional requirements may be needed for all footwear (e.g. requirements on insulation against heat or cold, penetration resistant safety). This footwear will have to show the relevant identification. The inspection criteria for all basic and additional requirements are laid down in the EN ISO 20344 standard
basic requirements for shoes and impact resistance of toe caps	SB - 200 joule	PB - 100 joule	OB - No requirement	
additional requirements: closed heel anti-static energy absorption around heel fuel resistant	S1	P1	01 (without fuel resistance)	
additional requirements: as above, plus water penetration water absorption	S2	P2	02	
additional requirements: as above, plus penetration resistance* cleated outsole	S3	P3	03	
basic requirements/additional requirements/categories e.g. for shoes made from PVC or PU				
basic requirements for shoes and impact resistance of toe caps	SB - 200 joule	PB - 100 joule	OB - No requirement	
additional requirements: anti-static energy absorption around heel fuel resistant	S4	P4	04	
penetration resistance* cleated outsole	S5	P5	05	

Perforation protection (marked as P or S3) - Please note that the perforation resistance has been laboratory-tested in using a spike of 4.5 mm in diameter and a force of 1100 Newton. A greater force or thinner spikes could increase the risk of penetration. When necessary, alternative preventive measures must be taken into consideration.

ADDITIONAL REQUIREMENTS FOR SPECIAL APPLICATIONS WITH CORRESPONDING SYMBOLS

- May satisfy the standard though not required in this case
- Meets the specified requirement

Symbol	Risks covered	EN ISO 20345 : 2011					EN ISO 20347			
		SB	S1	S2	S3	S5	08	01	02	03
-	basic									
P	penetration resistant sole (stainless steel)									
A	anti-static footwear									
E	energy absorption around heel									
HI	heat insulation									
CI	cold insulation									
WRU	water resistance of upper									
HRO	heat resistance of outsole (+300 °c/min)									
WR	whole shoe waterproof									
M	metatarsal protection									
CR	cut resistant									
FO	sole resistant to hydrocarbons									

CONTENTS

TECHNOLOGIES	P 006 - 007
--------------	-------------

MACSOLE® X	P 010 - 021
------------	-------------

MX 100 GT 63923	P 014 - 015
MX 200 GT LOW 63963	P 016
MX 200 GT HIGH 63943	P 017
MX 400 GT 63953	P 018
MX 300 GT 63933	P 019
MX 500 63973	P 020 - 021



RUN-R	P 022 - 037
-------	-------------

RUN-R 500 62673	P 026
RUN-R 510 62683	P 027
RUN-R 520 62693	P 028
RUN-R 530 62703	P 029
RUN-R 100 LOW 62583 + HIGH 62573	P 030
RUN-R 110 LOW 62633	P 031
RUN-R 210 62643	P 032
RUN-R 200 62593	P 033
RUN-R 600 LOW 67053	P 034
RUN-R 600 HIGH 67043	P 035
RUN-R 300 LOW 62603 + HIGH 62663	P 036
RUN-R 400 LOW 62653 + HIGH 62613	P 037



SUXXEED OFFROAD S3	P 038 - 047
--------------------	-------------

SUXXEED OFFROAD S3 LOW 62743 + HIGH 62733	P 042
SUXXEED OFFROAD BLACK S3 HIGH 62703	P 043
SUXXEED OFFROAD BLACK INOX S3 LOW 62723	P 044
SUXXEED OFFROAD BLACK INOX S3 HIGH 62713	P 045
SUXXEED OFFROAD S3 SNOW 62753	P 046 - 047



MACSOLE® SPORT 2.0	P 048 - 055
--------------------	-------------

MACJUMP 2.0 63013	P 052
MACPULSE 2.0 62023	P 053
MACMOVE 2.0 63003 + MACSPEED 2.0 62003	P 054
MACAIR 2.0 62033	P 055



MACSOLE® ADVENTURE 2.0	P 056 - 063
------------------------	-------------

MACEXPEDITION 2.0 LOW 62123 + HIGH 2.0 63233	P 060
MACWILD LOW 2.0 62103 + HIGH 2.0 63213	P 061
MACCROSSROAD BROWN 2.0 63893	P 062
MACCROSSROAD LOW 2.0 62113 + HIGH 2.0 63223	P 063



XXL PRO	P 064 - 069
---------	-------------

TETRA PRO 62783	P 068
ALPHA PRO 63913	P 069



SUXXEED	P 070 - 075
---------	-------------

SUXXEED S1P LOW 62563	P 074
SUXXEED S3 LOW 62553 + S3 63903	P 075



MACSOLE® 1.0	P 076 - 085
--------------	-------------

MACSOLE® 1.0 INH 62903	P 080
MACSOLE® 1.0 FXL 62513 + FXH 62923	P 081
MACSOLE® 1.0 NTX 62993	P 082
MACSOLE® 1.0 WLD LOW 62963 + WLD 3 62543	P 083
MACSOLE® 1.0 BFX1 62933	P 084
MACSOLE® 1.0 BFX2 62973	P 085



FLAG	P 086 - 089
------	-------------

FLAG COBALT 62223	P 088
FLAG TITANE 63463	P 089



FOCUS	P 090 -95
-------	-----------

FOCUS SANDAL 62460 + PERFO 62470	P 092
FOCUS LOW 62453 + HIGH 63853	P 093
GUARDIAN 1 63543	P 094
GUARDIAN 2 (HIVER) 63523	P 095



MACSOLE® EXTREM 2.0	P 096 - 099
---------------------	-------------

MACSILVER 2.0 62803	P 098
MACSILVER INTEGRAL 2.0 62883	P 099



STANDARDS	P 104
-----------	-------

UVEX HECKEL s.a.s
44, rue d'Engwiller | La Walck | 67350 Val de Moder | France
Tel. +33 388 07 61 08 | **Fax** +33 388 72 51 06
E-Mail France contact.france@uvex-heckel.fr
E-Mail Export contact.export@uvex-heckel.fr

www.heckel.fr