





- P 002 **BRAND STORY**
- P 004 **PROTECTING PLANET**
- P 008 **TECHNOLOGIES**
- P 018 **STANDARDS**

- P 020 **MACSOLE® ADVENTURE 3.0**
- P 038 **MACSOLE® SPORT**
- P 048 **RUN-R**
- P 060 **SUXXEED OFFROAD**
- P 068 **SUXXEED**
- P 074 **FOCUS 2.0**
- P 080 **MACSOLE® PLUS 2.0**
- P 088 **MACASPHALT**

- P 094 **MULTIPLE FIT SYSTEM**

- P 095 **ACCESSORIES**
- P 096 **MERCHANDISING**
- P 097 **OVERVIEW**

PERFORMANCE WITH STYLE

OUR SLOGAN REFLECTS OUR GOAL.



Heckel, based in La Walck, France, has been a world leader in the manufacture of safety footwear since 1970. Our expertise in this field has meant Heckel has become regarded as an industry expert. In 2001 Heckel became part of the uvex group, a pioneer in personal protection equipment (PPE).

The Heckel name is synonymous with high performance. When worn, users are reassured that they are fully protected by their safety footwear and equipped for even the most extreme conditions.

We maintain the highest standards of quality and control for our products, as this is the most effective way of guaranteeing their performance.

We are convinced that a wearer's safety stems from a combination of the most innovative materials, technologies and good design. Looking good whilst providing total protection is Heckel's goal.

PROTECTING PLANET

OUR COMMITMENT TO PEOPLE AND THE PLANET.

At uvex, of which Heckel is a part, sustainability has been a key focus for over a decade. We recognise our responsibility and are actively participating in the ongoing social and technological transformation. The shared mission across all uvex group brands to protect people, also drives our commitment to safeguarding the environment.

OUR FOUR FOCUS AREAS



Ecological transformation

We strive for climate neutrality by 2045 reducing our environmental footprint throughout the entire value creation chain.



Innovation cycle

We drive innovation in our products and services through resource efficiency, durability and recyclability.



Social responsibility

We create social value and bring about a positive change in society and our supply chain through our entrepreneurial thinking and actions.



Safeguarding health and the environment

We are committed to advanced pollutant management, striving to minimise our impact on both human health and the environment.



OUR LEADING PRODUCTS

More responsible without compromising safety or comfort, the RUN-R PLANET models incorporate numerous recycled and biobased materials.



24%
of recycled materials
in accordance with DIN
EN ISO 14021:2016

OUR ACTIONS FOR PEOPLE AND THE PLANET

For years, the uvex group has set itself ambitious ecological, economic and social targets. That is why we check, evaluate and optimise all steps along the value creation chain so that we can continue to be at the forefront in the discipline of sustainability.



Promoting responsible supply chains
Our main suppliers and production sites are certified to ISO 14001 Environmental management standard. We use mainly leather certified by the Leather Working Group for environmentally friendly and socially responsible leather production.

Prioritising recycled materials
More than 95% of the models in the catalogue have at least one recycled component.
Goal by 2030: 10% of the weight of the item is made from sustainable materials.

Protecting health and the environment
The uvex group has developed its own list of banned substances, which goes far beyond the requirements of European REACH regulations.

Adopting our own social standards
Since 2008, the uvex group has established and implemented its own social standards and are applied cross all our suppliers and business partners. In addition to the ILO principles, they also refer to the OECD guidelines for multinational enterprises.
Several criteria are considered: respect for human rights, working conditions, health and safety at work, environmental management, quality management systems and corruption.



Using environmentally friendly packaging
We use packaging made exclusively from recycled materials, whether for shoeboxes (minimum 80% recycled materials), user manuals or the tissue paper that the safety shoes are wrapped in to protect them during transit and storage (100% recycled).

Calculating the carbon footprint of our products
We calculate the CO₂ footprint of products using the measurement method specified in the ISO 14067 standard.
For the calculation, we use the SimaPro software package and the ecoinvent database, information we obtain from our suppliers and datasets based on our own measurements.
This makes the sustainability of our products measurable, comparable and improvable. The CO₂ symbol on our products provides our customers with a clear and reliable indication of the CO₂ product footprint.

Example: RUN-R PLANET 100 HIGH safety shoes



Calculation date 09/2023*

* Information: Values are rounded to two decimal places • Calculation of transport: Transport of the product incl. sales surcharge of the product group Calculation method: IPCC 2021 GWP 100a (based on ISO 14067) SimaPro with corresponding databases. These CO₂ values are valid at the time of calculation and may be subject to change. • Scope: cradle-to-customer • Unit: kg CO₂e

OUR TECHNOLOGIES

YOU ARE THE EXPERTS THAT WE LISTEN TO
WHEN DESIGNING NEW SAFETY FOOTWEAR.
YOUR REQUIREMENTS ARE WHAT DRIVES OUR INNOVATION
PROCESSES TO DELIVER FOOTWEAR THAT WILL
PROTECT YOU ON A DAILY BASIS.

HECKEL FOOTWEAR OFFERS A NUMBER OF SAFETY AND PROTECTION SPECIFICATIONS. IN ORDER TO FACILITATE UNDERSTANDING OF THESE SPECIFICATIONS, WE USE VARIOUS PICTOGRAMS. BELOW IS THE LIST OF THOSE PICTOGRAMS AND THEIR MEANING.

100% metal free

The entire shoe is free of any metal parts



Non-metallic protective toe cap

Provides protection against falling objects up to 200 J and compression of up to 15,000 Newton in accordance with the EN 20345 standard | 100% antimagnetic | comfortable due to its ergonomic shape | extra wide | 20% lighter than a conventional steel toe cap | conducts less heat and cold than a metal toe cap



Protective steel toe cap

Provides protection against falling objects up to 200 J and compression of up to 15,000 Newton in accordance with the EN 20345 standard



TRAXxs smart insoles

Safety shoes certified for use with XSole insole developed by TRAXxs for isolated workers



Non-metallic penetration-resistant midsole

Resistance to penetration up to 1,100 Newton in accordance with the EN 20345 standard | 100% composite | flexible | antimagnetic | protects 100% of the surface of the foot (as opposed to 85% on average for steel midsoles) | lighter than steel midsoles | conducts less heat and cold than a metal midsole



Stainless steel penetration-resistant midsole

Resistance to penetration up to 1,100 Newton in accordance with the EN 20345 standard



ESD

Meets the ESD specification with volume resistance between 100 kilohm and 100 megaohm



Multiple fit system

Safety boots and shoes are also available in widths 10 and 12 by changing the insock.



MACSOLE® RUBBER TECHNOLOGY

Since 2001, we have been developing our own rubber sole technology: MACSOLE®. MACSOLE® soles, made from an exclusive mixture of nitrile rubbers, offering unparalleled performance in terms of safety and longevity in the most extreme conditions.



Durability

MACSOLE® soles are made of unique, exclusive compounds offering exceptional abrasion resistance and prolong the service life of our products.

Comfort

The natural elasticity of rubber ensures long-lasting shock absorption. MACSOLE® footwear helps to lower the risk of accidents by reducing fatigue caused by prolonged walking or standing.

Multipurpose

Experience durability and excellent levels of grip, the MACSOLE® rubber soles are extremely versatile.



Anti-slip

Our exclusive MACSOLE® rubber formula offers unrivalled grip, far exceeding the requirements of EN 13287.



Thermal insulation

The exceptional strength of rubber at extreme temperatures ensures unparalleled thermal insulation against heat and cold. Only rubber resists contact heat up to 300°C and allows footwear to meet the HRO standard.

SAFETY FOOTWEAR WITH MACSOLE® RUBBER SOLE

MACSOLE® SPORT

MACSOLE® technology for all those working in light industry, automobile industry and service industries



MACSOLE® ADVENTURE 3.0

MACSOLE® technology for people who work outdoors and on uneven terrain



MACSOLE® PLUS 2.0

MACSOLE® technology ideal for a multitude of applications and offers value for money



MACSOLE® ASPHALT

MACSOLE® technology for asphalt work



Sustainability

All MACSOLE® soles now incorporate **8% recycled rubber**, from production waste, saving resources and reducing waste, while maintaining the same performance.

COMFORT & ANTI-FATIGUE MACABSORB TECHNOLOGY



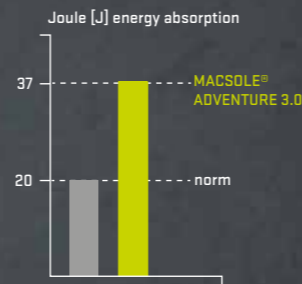
EVA insert
in heel

EVA insert
in forefoot

ENERGY ABSORPTION

85%

higher energy absorption
than that specified by
EN ISO 20345 standard



A NEW DEFINITION OF MACSOLE® PERFORMANCE

The models in the MACSOLE® ADVENTURE 3.0 range combine the natural elasticity properties of rubber with the new MACABSORB technology: EVA foam inserts are placed at the forefoot and heel for a better shock absorption superior to the requirements of the standard, significantly improving wearing comfort and reducing fatigue in the feet.



ULTRA LIGHT & DURABLE CUSHIONING

MACFOAM TECHNOLOGY

Inspired by materials used in the world of sport, we've developed the innovative MACFOAM midsole technology using Phylon, a compressed EVA.

Moulded at a specific temperature then expanded, this EVA has an unique structure made up of air and solid material, making it ultra-light with high shock absorption properties and exceptional flexibility.



SHOCK ABSORPTION

MACFOAM is an extra layer of cushioning along the entire surface of the shoe



LIGHTWEIGHT

The unique manufacturing process makes Phylon lighter than other components



FLEXIBILITY

One of the key characteristics of Phylon is its excellent flexibility, allowing it to support the natural movements of the foot

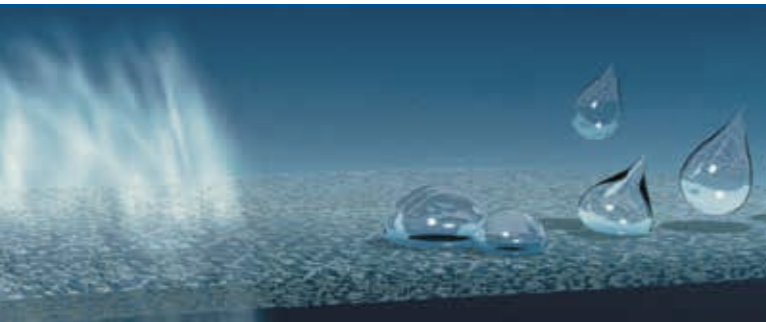


RESILIENCE

The MACFOAM comfort layer retains its excellent cushioning properties throughout the shoe's lifespan



WATERPROOFNESS AND BREATHABILITY



THE GORE-TEX TECHNOLOGY

The GORE-TEX membrane has microscopic pores 20,000 times smaller than a drop of water but 700 times larger than one water vapour molecule. It thereby enables sweat to escape, while protecting you from rain and snow.

GORE-TEX footwear keeps your feet dry and comfortable.

PROVEN QUALITY UNDER UNCOMPROMISING TESTING CONDITIONS

GORE-TEX footwear by far exceeds the requirements of the standard EN ISO 20345/347 with respect to waterproofness, breathability and durability.



Durable Waterproofness

GORE-TEX Footwear has to withstand up to 300,000 flex movements (80 hours) in ankle-high water - without allowing one single drop of water to penetrate inside the boot.

EN ISO standard 20344 requires only 4,800 flexes (80 minutes) and 3 cm³ water entry is allowed.



Breathability

The materials used in GORE-TEX Footwear achieve a breathability value up to six times higher than the values specified in EN ISO standard 20345/347.



Durability

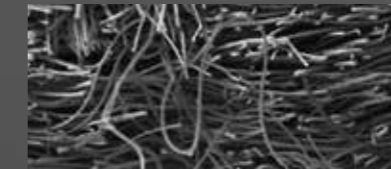
Inner lining and upper materials of GORE-TEX footwear have to withstand up to four times more abrasion movement than specified in by the EN ISO standard.

GORE-TEX INSULATED COMFORT FOOTWEAR

For outdoor work in extreme cold, such as in mountainous regions or cold-storage, the new GORE-TEX footwear laminate offers effective thermal insulation while reducing weight by 15%, all without compromising the level of thermal protection.

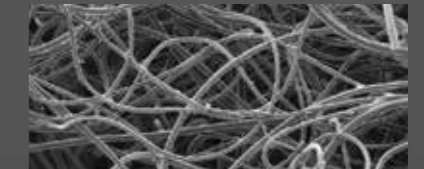
CONVENTIONAL INSULATION VERSUS NEW GORE-TEX INSULATION

Conventional insulation

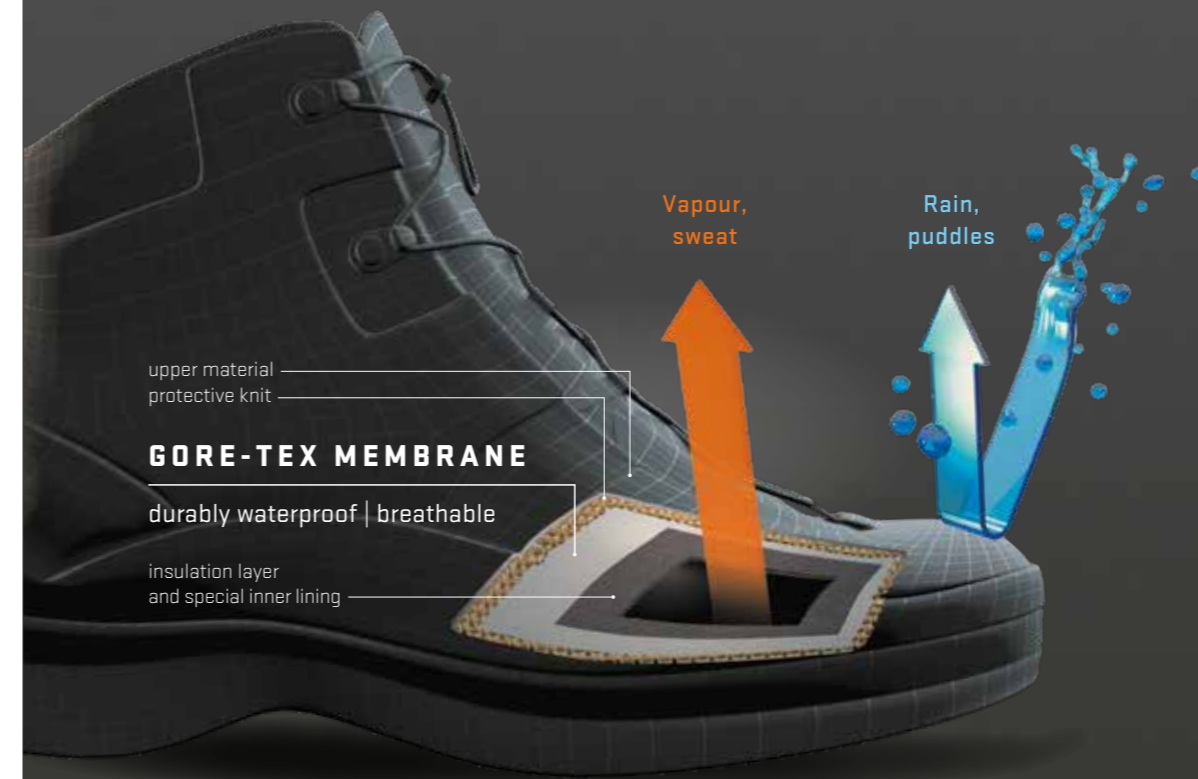


more solid fibres **increase weight** | the flat 2D layered structure **prevents air from entering** | **loss of insulating capacity** when compressed | fibres bond together **limiting flexibility**

New GORE-TEX insulation



15% lighter | hollow and fewer fibres **reduce weight** | the 3D structure makes it possible to store more air for **increased insulation** | spiral effect ensures **flexibility and comfort**



upper material
protective knit

GORE-TEX MEMBRANE

durably waterproof | breathable

insulation layer
and special inner lining

GORE-TEX MEMBRANE KEEPS THE INSULATION DRY

The durable waterproof and breathable GORE-TEX membrane ensures that the insulation is reliably protected against water penetration from the outside. At the same time, the sweat can easily escape to the outside in the form of water vapour.

The insulation stays dry and maintains its insulation efficiency. Your feet stay dry and comfortable.

Wet means cold, dry means warm !



METATARSAL PROTECTION

PATENTED TECHNOLOGY

D30® uses patented and exclusive technologies made from non-Newtonian fluid to manufacture flexible materials with impact absorption.

D30® offers an ergonomic solution guaranteeing safe metatarsal protection against impacts, without restricting freedom of movement and ensuring high levels of comfort.

HOW DOES D30® TECHNOLOGY WORK ?



Ultra flexible material



Absorbs and dissipates impact energy



Returns to flexible state

ENHANCED COMFORT AND SAFETY

PROTECTION FULLY INTEGRATED INTO THE TONGUE

SOFT AND FLEXIBLE

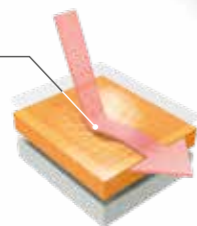
The protective component moulds to the shape of the foot, giving the wearer complete freedom of movement

THIN AND LIGHTWEIGHT

Does not contribute to the overall weight of the safety shoe

IMPACT RESISTANT TO 100 JOULES

M additional requirement according to EN ISO 20345 standard



BREATHABILITY

The segmented geometries offer breathability and air circulation



THE BOA® FIT SYSTEM

EASY, FAST AND PRECISE ADJUSTMENT

The BOA® Fit System is an innovative adjustment system for a tailor-made fit. Originally developed for the world of sport, BOA® Fit System technology applied to safety footwear enhances user safety, comfort and performance.



HOW IT WORKS

- Push in to engage
- Turn to tighten
- Pull up for quick release

THE BOA® BENEFITS

PERSONALISED

Make effortless micro-adjustments

CONNECTED

By offering you a micro-adjustable fit, BOA® allows you to be at one with your equipment for improved dexterity, responsiveness and control

FAST

The BOA® Fit System allows you to get your gear on and off fast and easily, no matter the conditions

RESISTANT

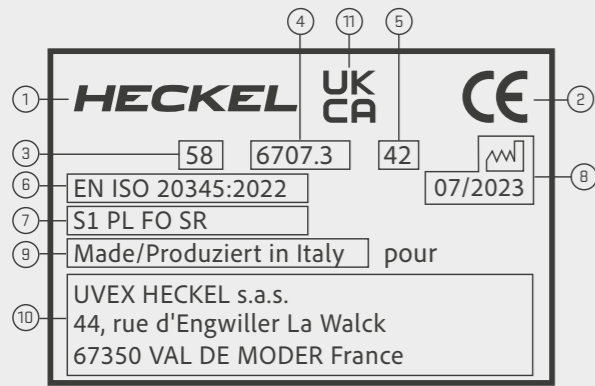
Extensively tested in the harshest conditions, BOA dials and laces are designed to reduce contamination by shedding ice, dirt, oil and other elements

FIT FOR LIFE WITH BOA®

The Boa® Fit System dials and laces are guaranteed for the lifetime of the product on which they are integrated

STANDARDS

LABELLING



The marking on the shoe includes the following specifications

- ① Manufacturer's identification mark
- ② CE symbol
- ③ Manufacturer's reference number
- ④ Article number
- ⑤ Size
- ⑥ Number of European standard
- ⑦ Symbol of protection
- ⑧ Date of manufacture in month/year format
- ⑨ Country of origin
- ⑩ Manufacturer's address
- ⑪ UKCA label

ELECTROSTATIC

Controlling unwelcome electrostatic charge is becoming an increasingly important requirement in industry, as more and more employees come into contact with processes, materials or objects which are sensitive to electrostatic charge. It is often necessary to use safety footwear as part of a system to conduct electrostatic charge in such workplaces.


Independent of various measuring methods, volume resistance between 100 kilohms (1.0×10^5 ohms) and 100 megaohms (1×10^8 ohms) is required to fulfil the various relevant standards (e. g. EN ISO 20345, EN 61340).

All ESD-certified products in this catalogue features the ESD symbol.



These products are also suitable in accordance with the specification for conductive footwear in the German Technical Rules for Hazardous Substances (TRGS) 727 "Avoiding risks of ignition resulting from electrostatic charges".

Volume resistance in accordance

Low resistance (conductive)	Antistatic acc. EN ISO 20345/EN ISO 20347	High resistance (insulating)
$R < 1 \times 10^5 \Omega$ (100 kilohms)	$1 \times 10^5 \Omega \leq R \leq 1 \times 10^8 \Omega$ (100 kilohms to 1 gigaohms) Electrostatic discharge (ESD) footwear in accordance with EN 61340-463 and EN 61340-5-1  $1 \times 10^5 \Omega \leq R \leq 1 \times 10^8 \Omega$ (100 kilohms to 100 megaohms)	$R > 1 \times 10^9 \Omega$ (1 gigaohms)
	10^5 10^6 10^7 10^8 10^9	
		Ohms

NEW STANDARD EN ISO 20345:2022

Basic requirements, SB



Toe cap, tested via 200 J drop test and 15 KN pressure test



Resistance, safety and capacity of materials



Ergonomics and comfort of the shoe



Slip resistance on ceramic tile floors with SLS

Marking in accordance with EN ISO 20345:2022

Symbole	Risque couvert	SB	S1	S1P	NEW S1PL	NEW S1PS	S2	S3	NEW S3L	NEW S3S	NEW S6	NEW S7	NEW S7L	NEW S7S
-	Basic requirements	■	■	■	■	■	■	■	■	■	■	■	■	■
-	Closed seat region		■	■	■	■	■	■	■	■	■	■	■	■
E	Energy absorption of seat region		■	■	■	■	■	■	■	■	■	■	■	■
A	Antistatic footwear		■	■	■	■	■	■	■	■	■	■	■	■
P	Perforation resistance, metallic insert, tested with a 4.5 mm test nail			■				■				■		
NEW PL	Perforation resistance, non-metallic insert, tested with a 4.5 mm test nail				■				■				■	
NEW PS	Perforation resistance, non-metallic insert, tested with a 3.0 mm test nail					■				■				■
NEW WPA	Water penetration and absorption of upper material						■	■	■	■	■	■	■	■
WR	Whole shoe waterproof										■	■	■	■
-	Treaded sole							■	■	■		■	■	■

Additional requirements



FD Fuel resistance and oil resistance



CI Cold insulation of the sole complex



HI Heat insulation of the sole complex



SC Abrasion resistance of optional overcaps



HRO Heat resistance of the outsole



M Metatarsal protection



LG Outsole provide hold on ladders



SR Slip resistance on ceramic tile floors with glycerol



MACSOLE®
ADVENTURE
3.0

BUILT TO HANDLE THE TOUGHEST WORKPLACES AND INSPIRED BY THE SPIRIT OF ADVENTURE, THE MACSOLE® ADVENTURE 3.0 IS THE ULTIMATE SAFETY RANGE FOR THOSE WHO DEMAND BOTH PERFORMANCE AND COMFORT.

Experience durability and excellent levels of grip thanks to our exclusive MACSOLE® sole, rubber scuff cap and Agile Ankle Guard support system, making it the most versatile range bar none. Equipped with MACABSORB technology the MACSOLE® ADVENTURE 3.0 safety footwear offers 85% more shock absorption than specified by the EN ISO 20345 standard, for reliable comfort on all surfaces.

Conquer any task with MACSOLE® ADVENTURE 3.0 products that offer a host of technical solutions: waterproofing and breathability thanks to the GORE-TEX membrane, a new-generation of GORE-TEX thermal insulation technology, lightweight and flexible metatarsal protection and a quick and easy BOA® Fit System fastening solution.



01 Rubber scuff cap (SC)
directly integrated into the outsole offering high **abrasion resistance** | **extends product life** | suitable for those **working in a crouching or kneeling position**

02 Agile Ankle Guard
better supports the foot and heel | limits the risk of sprains

03 MACABSORB technology
energy absorption 85% higher than specified by standard | reduces fatigue in feet



MACSOLE®
rubber sole with
MACABSORB EVA
foam inserts

SR | resistance to oils & hydrocarbons, chemicals | resistance to contact heat up to 300°C (HRO standard) | antistatic

French (EU) sizing system, width 11

- 01** wide ground-bearing surface
- 02** defined heel for outdoor environments
- 03** GRIPSTEP profile for extra grip on ladders & stairs
- 04** deep tread with sharp edges designed for rough terrain
- 05** self-cleaning profile increases slip resistance
- 06** ergonomic lines following natural movement of the foot

Insock

removable | anatomically shaped | made from 55% recycled materials | washable at 30°C

microfibre top layer for better resistance to abrasion and general wear and tear | very high moisture absorption capacity & fast drying | with forefoot & heel shock absorbers



open cell foam bottom layer with good moisture absorption and wicking properties



Non-metallic penetration-resistant midsole

resistance to penetration up to **1,100 Newton** in accordance with the EN 20345 standard | **100% composite** | flexible | **antimagnetic** | **protects 100%** of the surface of the foot (as opposed to 85% on average for steel midsoles) | **lighter** than steel midsoles | conducts less heat and cold than a metal midsole



Non-metallic protective toe cap

provides protection against falling objects up to **200 J** and compression of up to **15,000 Newton** in accordance with the EN 20345 standard | **antimagnetic** | **comfortable** due to its ergonomic shape | extra wide | **20% lighter** than a conventional steel toe cap | **conducts less** heat and cold than a metal toe cap



Sustainability

Outsole and removable insock made partly from recycled materials
Free from harmful substances in accordance with the uvex restricted substances list



-30°C



MACULTIMATE 3.0 RANGER GTX S7L FO CI HI HRO SC SR

MACSOLE® ADVENTURE 3.0 rubber **sole** with MACABSORB EVA insert in forefoot and heel for better shock absorption, rubber scuff cap | water-resistant full-grain leather **upper**, reinforced heel and sides - Agile Ankle Guard, closure system with non-metallic hooks and zip, reflective elements | GORE-TEX Insulated Comfort membrane **lining** | metal-free **toe cap** | metal-free **penetration-resistant midsole** | anatomically shaped **hygienic insock** with very high moisture absorption capacity, forefoot and heel shock absorbers | **weight 850 g** in size 42

outdoor work in extremely cold conditions, transportation networks, mountain work, cold stores, oil & gas, mining, 100% waterproof

SIZES **36 - 48** | EN 20345 : 2022
ART. NO. 67683





CI



S7L



MACTRACK 3.0 GTX S7L FO CI HI HRO SC SR

MACSOLE® ADVENTURE 3.0 rubber **sole** with MACABSORB EVA insert in forefoot and heel for better shock absorption, rubber scuff cap | water-resistant full-grain leather **upper**, reinforced heel and sides - Agile Ankle Guard | GORE-TEX Performance Comfort Footwear membrane **lining** | metal-free **toe cap** | metal-free **penetration-resistant midsole** | anatomically shaped **hygienic insock** with very high moisture absorption capacity, forefoot and heel shock absorbers | **weight 780 g** in size 42

humid outdoor environments, construction, transportation networks, energy, chemical, green spaces, 100% waterproof



100% metal free

SIZES **36 - 48** | EN 20345 : 2022
ART. NO. 67643



MACEXPEDITION 3.0 HIGH S7L FO CI HI HRO SC SR

MACSOLE® ADVENTURE 3.0 rubber **sole** with MACABSORB EVA insert in forefoot and heel for better shock absorption, rubber scuff cap | water-resistant microfibre textile **upper**, reinforced heel and sides - Agile Ankle Guard | GORE-TEX Performance Comfort Footwear membrane **lining** | metal-free **toe cap** | metal-free **penetration-resistant midsole** | anatomically shaped **hygienic insock** with very high moisture absorption capacity, forefoot and heel shock absorbers | **weight 700 g** in size 42

humid outdoor environments, construction, transportation networks, energy, chemical, green spaces, 100% waterproof



100% metal free

SIZES **36 - 48** | EN 20345 : 2022
ART. NO. 67343





S7L



S1 PL



MACEXPEDITION 3.0 LOW BOA S7L FO CI HI HRO SC SR

MACSOLE® ADVENTURE 3.0 rubber **sole** with MACABSORB EVA insert in forefoot and heel for better shock absorption, rubber scuff cap | water-resistant microfibre textile **upper** | **BOA® Fit System** for quick, easy and customised fit | GORE-TEX Performance Comfort Footwear membrane **lining** | metal-free **toe cap** | metal-free **penetration-resistant midsole** | anatomically shaped **hygienic insock** with very high moisture absorption capacity, forefoot and heel shock absorbers | **weight 660 g** in size 42

humid outdoor environments, green spaces, 100% waterproof

SIZES **36 - 48** | EN 20345 : 2022
ART. NO. 67393

BOA® is a registered trademark of Boa Technology Inc.



MACWILD 3.0 LOW BOA S1 PL FO CI HI HRO SC SR

MACSOLE® ADVENTURE 3.0 rubber **sole** with MACABSORB EVA insert in forefoot and heel for better shock absorption, rubber scuff cap | knitted mesh **upper** | **BOA® Fit System** for quick, easy and customised fit | 3D mesh polyester **lining** | metal-free **toe cap** | metal-free **penetration-resistant midsole** | anatomically shaped **hygienic insock**, very high moisture absorption capacity, forefoot and heel shock absorbers | **weight 660 g** in size 42

uneven terrain, dry environments

SIZES **36 - 48** | EN 20345 : 2022
ART. NO. 67663

BOA® is a registered trademark of Boa Technology Inc.





S3L



HRO



Calculation date 05/2024*

* Information: Values are rounded to two decimal places • Calculation of transport: Transport of the product incl. sales surcharge of the product group Calculation method: IPCC 2021 GWP 100a (based on ISO 14067) SimaPro with corresponding databases. These CO₂ values are valid at the time of calculation and may be subject to change. • Scope: cradle-to-customer • Unit: kg CO₂e

MACCROSSROAD 3.0 LOW BOA S3L FO CI HI HRO SC SR

MACSOLE® ADVENTURE 3.0 rubber **sole** with MACABSORB EVA insert in forefoot and heel for better shock absorption, rubber scuff cap | water-resistant full-grain leather **upper** | **BOA® Fit System** for quick, easy and customised fit | 3D mesh polyester **lining** | metal-free **toe cap** | metal-free **penetration-resistant midsole** | anatomically shaped **hygienic insock** with very high moisture absorption capacity, forefoot and heel shock absorbers | **weight 670 g** in size 42

uneven terrain, humid outdoor environments

SIZES **36 - 48** | EN 20345 : 2022
ART. NO. 67373

BOA® is a registered trademark of Boa Technology Inc.



MACCROSSROAD 3.0 HIGH BOA S3L FO CI HI HRO SC SR

MACSOLE® ADVENTURE 3.0 rubber **sole** with MACABSORB EVA insert in forefoot and heel for better shock absorption, rubber scuff cap | water-resistant full-grain leather **upper**, reinforced heel and sides - Agile Ankle Guard | **BOA® Fit System** for quick, easy and customised fit | 3D mesh polyester **lining** | metal-free **toe cap** | metal-free **penetration-resistant midsole** | anatomically shaped **hygienic insock** with very high moisture absorption capacity, forefoot and heel shock absorbers | **weight 670 g** in size 42

uneven terrain, humid outdoor environments

SIZES **36 - 48** | EN 20345 : 2022
ART. NO. 67363

BOA® is a registered trademark of Boa Technology Inc.





MACCROSSROAD 3.0 LOW + HIGH META S3L FO M CI HI HRO SC SR

MACSOLE® ADVENTURE 3.0 rubber **sole** with MACABSORB EVA insert in forefoot and heel for better shock absorption, rubber scuff cap | water-resistant full-grain leather **upper**, reinforced heel and sides - Agile Ankle Guard (HIGH) | **metatarsal protection D30®** 100 Joules fully integrated into the tongue | 3D mesh polyester **lining** | metal-free **toe cap** | metal-free **penetration-resistant midsole** | anatomically shaped **hygienic insock** with very high moisture absorption capacity, forefoot and heel shock absorbers | **weight 680 g** (LOW) and **740 g** (HIGH) in size 42

risk of objects falling on the metatarsals, construction and civil engineering, oil & gas, heavy industry

SIZES **36 - 48** | EN 20345 : 2022
ART. NO. 67743 (LOW)
67353 (HIGH)

D30® is a registered trademark of Design Blue Limited.



100% metal free



HIGH

MACCROSSROAD BROWN 3.0 HIGH S3L FO CI HI HRO SC SR

MACSOLE® ADVENTURE 3.0 rubber **sole** with MACABSORB EVA insert in forefoot and heel for better shock absorption, rubber scuff cap | water-resistant full-grain leather **upper**, reinforced heel and sides - Agile Ankle Guard | 3D mesh polyester **lining** | metal-free **toe cap** | metal-free **penetration-resistant midsole** | anatomically shaped **hygienic insock** with very high moisture absorption capacity, forefoot and heel shock absorbers | **weight 700 g** in size 42

uneven terrain, humid outdoor environments

SIZES **36 - 48** | EN 20345 : 2022
ART. NO. 67303



100% metal free





SC



HRO



Calculation date 05/2024*



MACCROSSROAD 3.0 LOW S3L FO CI HI HRO SC SR

MACSOLE® ADVENTURE 3.0 rubber **sole** with MACABSORB EVA insert in forefoot and heel for better shock absorption, rubber scuff cap | water-resistant full-grain leather **upper** | 3D mesh polyester **lining** | metal-free **toe cap** | metal-free **penetration-resistant midsole** | anatomically shaped **hygienic insock** with very high moisture absorption capacity, forefoot and heel shock absorbers | **weight 650 g** in size 42

uneven terrain, humid outdoor environments

SIZES **36 - 48** | EN 20345 : 2022
ART. NO. 67323



100% metal free



MACCROSSROAD 3.0 HIGH S3L FO CI HI HRO SC SR

MACSOLE® ADVENTURE 3.0 rubber **sole** with MACABSORB EVA insert in forefoot and heel for better shock absorption, rubber scuff cap | water-resistant full-grain leather **upper**, reinforced heel and sides - Agile Ankle Guard | 3D mesh polyester **lining** | metal-free **toe cap** | metal-free **penetration-resistant midsole** | anatomically shaped **hygienic insock** with very high moisture absorption capacity, forefoot and heel shock absorbers | **weight 700 g** in size 42

uneven terrain, humid outdoor environments

SIZES **35 - 51** | EN 20345 : 2022
ART. NO. 67313



100% metal free





SR



ZIP



MACEXPLORE BROWN 3.0 RANGER INOX S3 FO CI HI HRO SC SR

MACSOLE® ADVENTURE 3.0 rubber **sole** with MACABSORB EVA insert in forefoot and heel for better shock absorption, rubber scuff cap | water-resistant full-grain leather **upper**, reinforced heel and sides - Agile Ankle Guard | 3D mesh polyester **lining** | metal-free **toe cap** | stainless steel **penetration-resistant midsole** | anatomically shaped **hygienic insock** with very high moisture absorption capacity, forefoot and heel shock absorbers | **weight 800 g** in size 42

construction, oil & gas, off-shore, heavy industry, chemical, humid outdoor environments



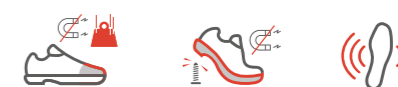
SIZES **36 - 48** | EN 20345 : 2022
ART. NO. 62773



MACEXPLORE BLACK 3.0 RANGER ZIPPER S3L FO CI HI HRO SC SR

MACSOLE® ADVENTURE 3.0 rubber **sole** with MACABSORB EVA insert in forefoot and heel for better shock absorption, rubber scuff cap | water-resistant full-grain leather **upper**, reinforced heel and sides - Agile Ankle Guard, closure system with non-metallic hooks and zip | 3D mesh polyester **lining** | metal-free **toe cap** | metal-free **penetration-resistant midsole** | anatomically shaped **hygienic insock** with very high moisture absorption capacity, forefoot and heel shock absorbers | **weight 830 g** in size 42

oil & gas, off-shore, construction, heavy industry, chemical, humid outdoor environments



SIZES **36 - 48** | EN 20345 : 2022
ART. NO. 67673





MACSOLE®
SPORT

**THE MACSOLE® SPORT RANGE TAKES
INSPIRATION FROM THE WORLD OF
SPORT IN TERMS OF ITS DESIGN AND
THE PERFORMANCE IT OFFERS:**

Innovative MACFOAM midsole technology guarantees lightness, flexibility and high shock absorption performance.

This range is specifically engineered for those who spend prolonged periods standing or walking in environments such as warehousing and logistics, local authorities, light industry or skilled trades.



01
MACFOAM comfort layer
high performance shock absorption | remains light and flexible for the lifetime of the shoe



02
Superlight tongue
ultra-thin and light | enhanced climate management | gusset keeps debris out

03
Rubber-coated toe (SC)
prolongs product life | designed for people who have to kneel or crouch throughout the day



MAGSOLE®
rubber sole
with MACFOAM
comfort layer

SR | resistance to oils & hydrocarbons, chemicals | resistance to contact heat up to 300°C (HRO standard) | antistatic

French (EU) sizing system, width 11

- 01** forefront grooves for better grip during propulsion
- 02** multiple studs on the sides of the sole for extra grip
- 03** GRIPSTEP profile for ladders and stairs
- 04** modern, sporty profile that supports the natural rolling motion of the foot
- 05** heel grooves for better grip

Insock*

removable | anatomically shaped | made from 55% recycled materials | washable at 30°C

microfibre top layer for better resistance to abrasion and general wear and tear | very high moisture absorption capacity & fast drying | with forefoot & heel shock absorbers



open cell foam bottom layer with good moisture absorption and wicking properties

* for models 67453, 67403, 67443, 67473 and 67433



Non-metallic penetration-resistant midsole

resistance to penetration up to **1,100 Newton** in accordance with the EN 20345 standard | **100% composite** | flexible | **antimagnetic** | **protects 100%** of the surface of the foot (as opposed to 85% on average for steel midsoles) | **lighter** than steel midsoles | conducts less heat and cold than a metal midsole



Non-metallic protective toe cap

provides protection against falling objects up to **200 J** and compression of up to **15,000 Newton** in accordance with the EN 20345 standard | **antimagnetic** | **comfortable** due to its ergonomic shape | extra wide | **20% lighter** than a conventional steel toe cap | **conducts less** heat and cold than a metal toe cap



Sustainability

Outsole, removable insock and heel cap made wholly or partly from recycled materials
Free from harmful substances in accordance with the uvex restricted substances list



S1 PL



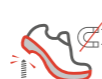
SR



MS 100 HIGH S1 PL FO HRO SC SR

MACSOLE® SPORT rubber **sole**, excellent levels of grip | MACFOAM technology **intermediate sole** offering high performance shock absorption, lightweight and reinforced elasticity | very breathable micromesh textile **upper**, reinforced TPU scuff cap | 3D mesh polyester **lining** | ultra-thin microfibre superlight **tongue** | metal-free **toe cap** | metal-free **penetration-resistant midsole** | anatomically shaped **hygienic insock** with very high moisture absorption capacity, forefoot and heel shock absorbers | **weight 525 g** in size 42

tradesmen, light industry, logistics, transport, services, local authorities, dry environments



100% metal free



SIZES **36 - 48** | EN 20345 : 2022
ART. NO. 67453

MS 100 LOW S1 PL FO HRO SC SR

MACSOLE® SPORT rubber **sole**, excellent levels of grip | MACFOAM technology **intermediate sole** offering high performance shock absorption, lightweight and reinforced elasticity | very breathable micromesh textile **upper**, reinforced TPU scuff cap | 3D mesh polyester **lining** | ultra-thin microfibre superlight **tongue** | metal-free **toe cap** | metal-free **penetration-resistant midsole** | anatomically shaped **hygienic insock** with very high moisture absorption capacity, forefoot and heel shock absorbers | **weight 500 g** in size 42

tradesmen, light industry, logistics, transport, services, local authorities, dry environments



100% metal free



SIZES **36 - 48** | EN 20345 : 2022
ART. NO. 67403



MS 110 SANDAL S1 PL FO HRO SC SR

MACSOLE® SPORT rubber **sole**, excellent levels of grip | MACFOAM technology **intermediate sole** offering high performance shock absorption, lightweight and reinforced elasticity | very breathable micromesh textile **upper**, large perforations for high breathability, reinforced TPU scuff cap | 3D mesh polyester **lining** | ultra-thin microfibre superlight **tongue** | metal-free **toe cap** | metal-free **penetration-resistant midsole** | anatomically shaped **hygienic insock** with very high moisture absorption capacity, forefoot and heel shock absorbers | **weight 550 g** in size 42

tradesmen, light industry, logistics, transport, services, local authorities, dry and hot environments

SIZES **36-48** | EN 20345 : 2022
ART. NO. 67443



100% metal free

MS 300 LOW + HIGH S3L FO HRO SC SR

MACSOLE® SPORT rubber **sole**, excellent levels of grip | MACFOAM technology **intermediate sole** offering high performance shock absorption, lightweight and reinforced elasticity | water-resistant oiled full-grain leather **upper**, rubber coated toe | 3D mesh polyester **lining** | ultra-thin microfibre superlight **tongue** | metal-free **toe cap** | metal-free **penetration-resistant midsole** | anatomically shaped **hygienic insock** with very high moisture absorption capacity, forefoot and heel shock absorbers | **weight 540 g (LOW) and 590 g (HIGH)** in size 42

tradesmen, industry, logistics, transport, services, local authorities, wet environments

SIZES **36-48** | EN 20345 : 2022
ART. NO. 67473 (LOW)
67493 (HIGH)



100% metal free



S1 PL



S3L



MS 10 LOW S1 PL FO HRO SR

MACSOLE® SPORT rubber **sole**, excellent levels of grip | MACFOAM technology **intermediate sole** offering high performance shock absorption, lightweight and reinforced elasticity | textile **upper**, reinforced TPU scuff cap | 3D mesh polyester **lining** | metal-free **toe cap** | metal-free **penetration-resistant midsole** | anatomically shaped **hygienic insock** with very high moisture absorption | **weight 460 g** in size 42

tradesmen, light industry, logistics, transport, services, local authorities, dry environments



100% metal free



SIZES **36-48** | EN ISO 20345 : 2022
ART. NO. 67603

MS 30 LOW + HIGH S3L FO HRO SR

MACSOLE® SPORT rubber **sole**, excellent levels of grip | MACFOAM technology **intermediate sole** offering high performance shock absorption, lightweight and reinforced elasticity | water-resistant oiled full-grain leather and microfibre **upper**, reinforced TPU scuff cap | 3D mesh polyester **lining** | metal-free **toe cap** | metal-free **penetration-resistant midsole** | anatomically shaped **hygienic insock** with very high moisture absorption | **weight 500 g** (LOW) and **520 g** (HIGH) in size 42

tradesmen, industry, logistics, transport, services, local authorities, damp working conditions



100% metal free



SIZES **36-48** | EN ISO 20345 : 2022
ART. NO. 67623 (LOW)
67633 (HIGH)



RUN-R

RUN-R IS THE IDEAL RANGE FOR PEOPLE LOOKING FOR A LIGHTWEIGHT, FLEXIBLE PRODUCT THAT IS DESIGNED LIKE A SPORTS SHOE.

100% metal-free, ultra-flexible, excellent slip-resistance (SR) complete with breathable components: RUN-R safety boots and shoes are designed for tradespeople, those working in warehousing, logistics and light industry.

More environmentally responsible without compromising safety or comfort, the RUN-R PLANET models incorporate numerous recycled materials representing between 17 and 24% according to the EN ISO 14021 standard.



01
TPU film
better abrasion resistance

02
Climate management / upper technologies
excellent breathability

03
Double density PU sole
excellent shock absorption and very low weight



Double density PU sole

SR | resistance to oils & hydrocarbons, chemicals | antistatic | optimum flexibility & shock absorption

French (EU) sizing system, width 11



- 01 grooves at the back of the heel for a better grip when the heel first touches the ground
- 02 dual density PU for excellent shock absorption
- 03 GRIPSTEP profile for ladders and stairs
- 04 self-cleaning sole profile increases slip resistance
- 05 sharp-edged tread profile improves grip
- 06 large ground-bearing surface
- 07 deep grooves for better grip in the forefoot area

Insock

removable | anatomically shaped | made from 75% recycled materials | washable at 30°C

high quality microfibre top layer | excellent abrasion resistance | moisture absorption | quick drying | shock absorption in heel and forefoot areas | arch support



open cell foam bottom layer with good moisture absorption and wicking properties



Non-metallic penetration-resistant midsole

resistance to penetration up to **1,100 Newton** in accordance with the EN 20345 standard | **100% composite** | flexible | **antimagnetic** | **protects 100%** of the surface of the foot (as opposed to 85% on average for steel midsoles) | **lighter** than steel midsoles | conducts less heat and cold than a metal midsole



Non-metallic protective toe cap

provides protection against falling objects up to **200 J** and compression of up to **15,000 Newton** in accordance with the EN 20345 standard | **antimagnetic** | **comfortable** due to its ergonomic shape | extra wide | **20% lighter** than a conventional steel toe cap | **conducts less** heat and cold than a metal toe cap



Sustainability

Upper, lining, laces, removable insock and penetration resistance made wholly or partly from recycled materials (RUN-R PLANET)
Removable insock made partly from recycled materials (RUN-R)
Free from harmful substances in accordance with the uvex restricted substances list



SR



S1 PL



Calculation date 09/2023*

* Information: Values are rounded to two decimal places • Calculation of transport: Transport of the product incl. sales surcharge of the product group Calculation method: IPCC 2021 GWP 100a (based on ISO 14067) SimaPro with corresponding databases. These CO₂ values are valid at the time of calculation and may be subject to change.
• Scope: cradle-to-customer • Unit: kg CO₂e



Calculation date 09/2023*

* Information: Values are rounded to two decimal places • Calculation of transport: Transport of the product incl. sales surcharge of the product group Calculation method: IPCC 2021 GWP 100a (based on ISO 14067) SimaPro with corresponding databases. These CO₂ values are valid at the time of calculation and may be subject to change.
• Scope: cradle-to-customer • Unit: kg CO₂e

RUN-R PLANET 100 HIGH S1 PL FO SR

double density PU **sole**, excellent levels of grip and shock absorption | recycled polyester **upper** with TPU film for excellent abrasion resistance | recycled **laces** | recycled polyester and bamboo fibres in **lining** for excellent breathability | metal-free **toe cap** | metal-free **penetration-resistant midsole** | anatomically shaped **hygienic insock** with front and heel shock absorption | **weight 520 g** in size 42

tradesmen, light industry, logistics, transport, services, automotive, electronics industry, dry environments

SIZES **35 - 48** | EN 20345 : 2022
ART. NO. 67503



100% metal free



RUN-R PLANET 100 LOW S1 PL FO SR

double density PU **sole**, excellent levels of grip and shock absorption | recycled polyester **upper** with TPU film for excellent abrasion resistance | **easy lock system** : speed lace system | recycled polyester and bamboo fibres in **lining** for excellent breathability | metal-free **toe cap** | metal-free **penetration-resistant midsole** | anatomically shaped **hygienic insock** with front and heel shock absorption | **weight 500 g** in size 42

tradesmen, light industry, logistics, transport, services, automotive, electronics industry, dry environments

SIZES **35 - 48** | EN 20345 : 2022
ART. NO. 67073



100% metal free





S3L



ESD



Calculation date 09/2023*

* Information: Values are rounded to two decimal places • Calculation of transport: Transport of the product incl. sales surcharge of the product group Calculation method: IPCC 2021 GWP 100a (based on ISO 14067) SimaPro with corresponding databases. These CO₂ values are valid at the time of calculation and may be subject to change.
• Scope: cradle-to-customer • Unit: kg CO₂e



Calculation date 09/2023*

* Information: Values are rounded to two decimal places • Calculation of transport: Transport of the product incl. sales surcharge of the product group Calculation method: IPCC 2021 GWP 100a (based on ISO 14067) SimaPro with corresponding databases. These CO₂ values are valid at the time of calculation and may be subject to change.
• Scope: cradle-to-customer • Unit: kg CO₂e

RUN-R PLANET 300 HIGH S3L FO SR

double density PU **sole**, excellent levels of grip and shock absorption | recycled microfibrer **upper** with TPU film for excellent abrasion resistance | recycled **laces** | recycled polyester and bamboo fibres in **lining** for excellent breathability | metal-free **toe cap** | metal-free **penetration-resistant midsole** | anatomically shaped **hygienic insock** with front and heel shock absorption | **weight 520 g** in size 42

tradesmen, light industry, logistics, transport, services, automotive, electronics industry, dry environments

SIZES **35 - 48** | EN 20345 : 2022
ART. NO. 67583



RUN-R PLANET 300 LOW S3L FO SR

double density PU **sole**, excellent levels of grip and shock absorption | recycled microfibrer **upper** with TPU film for excellent abrasion resistance | **easy lock system** : speed lace system | recycled polyester and bamboo fibres in **lining** for excellent breathability | metal-free **toe cap** | metal-free **penetration-resistant midsole** | anatomically shaped **hygienic insock** with front and heel shock absorption | **weight 500 g** in size 42

tradesmen, light industry, logistics, transport, services, automotive, electronics industry, dry environments

SIZES **35 - 48** | EN 20345 : 2022
ART. NO. 67583



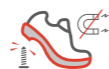


RUN-R 100 LOW S1 PL FO SR

double density PU **sole**, excellent levels of grip, shock absorption | mesh **upper** and TPU support structure for excellent abrasion resistance | **easy lock system** : speed lace system | 3D polyester mesh **lining** for excellent breathability, quick drying | metal-free **toe cap** | metal-free **penetration-resistant midsole** | anatomically shaped **hygienic insock** with front and heel shock absorption | **weight 550 g** in size 42

tradesmen, light industry, logistics, services, dry environments

SIZES **37-48** | EN 20345 : 2022
ART. NO. 62583



100% metal free

RUN-R 200 S1 PL FO SR

double density PU **sole**, excellent levels of grip and shock absorption | mesh **upper** with TPU film for excellent abrasion resistance | 3D polyester mesh **lining** for excellent breathability, quick drying | metal-free **toe cap** | metal-free **penetration-resistant midsole** | anatomically shaped **hygienic insock** with front and heel shock absorption | **weight 560 g** in size 42

tradesmen, light industry, logistics, services, dry environments

SIZES **37-48** | EN 20345 : 2022
ART. NO. 62593



100% metal free



S3L



SR



RUN-R 300 LOW + HIGH S3L FO SR

double density PU **sole**, excellent levels of grip and shock absorption | water-resistant embossed oiled nubuck **upper** | 3D polyester mesh **lining** for excellent breathability, quick drying | metal-free **toe cap** | metal-free **penetration-resistant midsole** | anatomically shaped **hygienic insock** with front and heel shock absorption | **weight 575 g (LOW) and 590 g (HIGH)** in size 42

tradesmen, light industry, logistics, services, damp working conditions

SIZES **37-48** | EN 20345 : 2022
ART. NO. 62603 (LOW)
62663 (HIGH)



100% metal free

RUN-R 400 LOW + HIGH S3L FO SR

double density PU **sole**, excellent levels of grip and shock absorption | water-resistant embossed full-grain leather **upper** | 3D polyester mesh **lining** for excellent breathability, quick drying | metal-free **toe cap** | metal-free **penetration-resistant midsole** | anatomically shaped **hygienic insock** with front and heel shock absorption | **weight 570 g (LOW) and 580 g (HIGH)** in size 42

tradesmen, light industry, logistics, services, damp working conditions

SIZES **37-48** | EN 20345 : 2022
ART. NO. 62653 (LOW)
62613 (HIGH)



100% metal free



SUXXEED
OFFROAD

THE SUXXEED OFFROAD RANGE HAS BEEN DEVELOPED TO WITHSTAND THE DEMANDS OF THOSE WORKING IN RUGGED OUTDOOR ENVIRONMENTS SUCH AS THE BUILDING TRADES.

Designed for those facing tough work conditions, this range features an outdoor-inspired design, an all-terrain sole for superior grip, and a robust injection-moulded polyurethane scuff cap to withstand heavy wear and tear.



01 Closure system
non-metallic eyelets and hooks

02 Few lateral seams
limits pressure points when bending for increased comfort | improves liquid penetration resistance

03 Injection moulded PU scuff cap (SC)
extends product life | suitable for those working in a crouching or kneeling position



Double density PU sole

SR | resistance to oils & hydrocarbons, chemicals | antistatic | optimum flexibility & shock absorption

French (EU) sizing system, width 11

- 01** rear grooves improve adhesion during first contact of heel to floor
- 02** double density PU sole for excellent shock absorption and very low weight
- 03** pronounced heel
- 04** GRIPSTEP profile for extra grip on ladders & stairs
- 05** sharp tread profile improves grip
- 06** all-terrain profile with deep cleats
- 07** self-cleaning profile increases slip resistance
- 08** front grooves for better grip

Insock

anatomically shaped | antistatic | made from 56% recycled materials

textile over layer: very good abrasion resistance | absorbant | fast drying



open cell foam bottom layer with good moisture absorption and wicking properties



Non-metallic penetration-resistant midsole

resistance to penetration up to **1,100 Newton** in accordance with the EN 20345 standard | **100% composite** | flexible | **antimagnetic** | **protects 100%** of the surface of the foot (as opposed to 85% on average for steel midsoles) | **lighter** than steel midsoles | conducts less heat and cold than a metal midsole



Non-metallic protective toe cap

provides protection against falling objects up to **200 J** and compression of up to **15,000 Newton** in accordance with the EN 20345 standard | **antimagnetic** | **comfortable** due to its ergonomic shape | extra wide | **20% lighter** than a conventional steel toe cap | **conducts less** heat and cold than a metal toe cap



Sustainability

Removable insock and heel cap made wholly or partly from recycled materials
Free from harmful substances in accordance with the uvex restricted substances list



SUXXEED OFFROAD BLACK HIGH + LOW S3L FO LG CI SC SR

double density PU **sole**, excellent levels of grip, self-cleaning sole profile, excellent shock absorption and an injection moulded PU scuff cap | water-resistant oiled grain leather **upper**, microfibre insert, water-resistant tongue and collar, reflective elements, non-metallic eyelets and hooks | 3D mesh **lining** for excellent breathability, quick drying | metal-free **toe cap** | metal-free **penetration-resistant midsole** | anatomically shaped **hygienic insock** with bottom layer of open cell foam with very high moisture absorption capacity that's fast drying | **weight 630 g (LOW) and 710 g (HIGH)** in size 42

building and construction, general industry, energy, logistics, maintenance, utilities, humid outdoor environments

SIZES **36 - 48** | EN 20345 : 2022
ART. NO. 67283 (LOW)
67203 (HIGH)



100% metal free



SUXXEED OFFROAD RANGER S3L FO LG CI SC SR

double density PU **sole**, excellent levels of grip, self-cleaning sole profile, excellent shock absorption and an injection moulded PU scuff cap | water-resistant oiled grain leather **upper**, non-metallic eyelets and hooks | 3D mesh **lining** for excellent breathability, quick drying | metal-free **toe cap** | metal-free **penetration resistant midsole** | anatomically shaped **hygienic insock** with bottom layer of open cell foam with very high moisture absorption capacity that's fast drying | **weight 800 g** in size 42

building and construction, general industry, energy, logistics, maintenance, utilities, humid outdoor environments

SIZES **36 - 48** | EN 20345 : 2022
ART. NO. 67233



100% metal free





SUXXEED OFFROAD HIGH + LOW S3L FO LG CI SC SR

double density PU **sole**, excellent levels of grip, self-cleaning sole profile, excellent shock absorption and an injection moulded PU scuff cap | water-resistant oiled grain leather **upper**, microfibre insert, water-resistant tongue and collar, reflective elements, non-metallic eyelets and hooks | 3D mesh **lining** for excellent breathability, quick drying | metal-free **toe cap** | metal-free **penetration-resistant midsole** | anatomically shaped **hygienic insock** with bottom layer of open cell foam with very high moisture absorption capacity that's fast drying | **weight 630 g** (LOW) and **710 g** (HIGH) in size 42

building and construction, general industry, energy, logistics, maintenance, utilities, humid outdoor environments

SIZES **36 - 48** | EN 20345 : 2022
ART. NO. 62743 (LOW)
62793 (HIGH)



100% metal free



SUXXEED OFFROAD RIGGER INOX S3 FO LG CI SC SR + SNOW S3L FO LG CI SC SR

double density PU **sole**, excellent levels of grip, self-cleaning sole profile, excellent shock absorption and an injection moulded PU scuff cap | water-resistant oiled grain leather **upper**, microfibre insert, reflective elements, very large handles | fleece **lining** for thermal insulation (SNOW) | metal-free **toe cap** | stainless steel **penetration-resistant midsole** (RIGGER INOX) | metal-free **penetration-resistant midsole** (SNOW) | anatomically shaped **hygienic insock** with bottom layer of open cell foam with very high moisture absorption capacity that's fast drying | **weight 810 g** (RIGGER INOX) and **800 g** (SNOW) in size 42

building and construction, general industry, energy, logistics, maintenance, utilities, humid outdoor environments, winter conditions (SNOW)

SIZES **36 - 48** | EN ISO 20345 : 2011
ART. NO. 62793 (RIGGER INOX)
62753 (SNOW)



100% metal free





SUXXEED

THE SUXXEED RANGE IS CHARACTERISED BY EXCEPTIONAL SHOCK ABSORPTION AND UNBEATABLE GRIP IN ANY WEATHER OR TERRAIN.

Engineered for demanding roles across various industries, trades, logistics, public services, maintenance and industrial cleaning, the Heckel SUXXEED footwear is built to last.



01 Soft comfort
flexible collar | thick comfortable foam | Climate Airmesh lining

02 Double density PU sole
excellent shock absorption and very low weight



Double density PU sole

SRC | resistance to oils & hydrocarbons, chemicals | antistatic | excellent shock absorption | very light

French (EU) sizing system, width 11

- 01** grooves at the back of the heel for a better grip when the heel first touches the ground
- 02** self-cleaning sole profile increases slip resistance
- 03** sharp tread profile improves grip
- 04** wide ground-bearing surface



Non-metallic penetration-resistant midsole

resistance to penetration up to **1,100 Newton** in accordance with the EN 20345 standard | **100% composite** | flexible | **antimagnetic** | **protects 100%** of the surface of the foot (as opposed to 85% on average for steel midsoles) | **lighter** than steel midsoles | conducts less heat and cold than a metal midsole



Non-metallic protective toe cap

provides protection against falling objects up to **200 J** and compression of up to **15,000 Newton** in accordance with the EN 20345 standard | **antimagnetic** | **comfortable** due to its ergonomic shape | extra wide | **20% lighter** than a conventional steel toe cap | **conducts less** heat and cold than a metal toe cap



Sustainability

Heel cap made wholly from recycled materials
Free from harmful substances in accordance with the uvex restricted substances list



S1P



S3

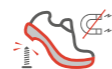


SUXXEED S1P LOW S1P SRC

double density PU **sole**, excellent levels of grip, shock absorption | ultra-breathable suede **upper**, perforations for additional ventilation | Climate Airmesh **lining** | metal-free **toe cap** | metal-free **penetration-resistant midsole** | removable **hygienic insock** with abrasion-resistant textile top layer | **weight 585 g** in size 42

tradesmen, logistics, industry, local authorities, dry and hot environments

SIZES **38 - 47** | EN 20345 : 2011
ART. NO. 62563



100% metal free

SUXXEED S3 LOW + HIGH S3 SRC

double density PU **sole**, excellent levels of grip, shock absorption | oiled hydro suede leather **upper** resistant to liquid penetration, collar and gusset in water-repellent fabric, fabric eyelets | Climate Airmesh **lining** | metal-free **toe cap** | metal-free **penetration-resistant midsole** | removable **hygienic insock**, top in abrasion-resistant fabric | **weight 570 g** (LOW) and **615 g** (HIGH) in size 42

tradesmen, logistics, industry, local authorities, damp working conditions

SIZES **35 - 47** | EN 20345 : 2011
ART. NO. 62553 (LOW)
63903 (HIGH)



100% metal free



FOCUS
2.0

THE FOCUS 2.0 RANGE IS INCREDIBLY VERSATILE, DESIGNED TO CATER FOR A WIDE RANGE OF INDUSTRIAL PROFESSIONALS, INCLUDING THOSE WORKING IN LIGHT INDUSTRY AND CONSTRUCTION.

Offering exceptional value, this multipurpose product boasts lightweight features like a dual-density PU sole for superior shock absorption, alongside a metal-free toe cap and penetration-resistant midsole.



01 Reflective elements
improves wearer's visibility

02 Double density PU sole
excellent shock absorption and very low weight

03 Padded collar
for better comfort and protection on the malleolus and Achilles tendon areas



Double density PU sole

SR | resistance to oils & hydrocarbons, chemicals | antistatic | optimum flexibility & shock absorption

French (EU) sizing system, width 11

- 01** double density PU sole for excellent shock absorption and very low weight
- 02** rear grooves improve adhesion during first contact to heel to floor
- 03** wide ground-bearing surface
- 04** sharp tread profile improves grip
- 05** pronounced heel
- 06** self-cleaning profile increases slip resistance
- 07** front grooves for better grip

Insock

anatomically shaped | antistatic | made from 62% recycled materials



textile top layer and perforations for easy wicking of moisture

EVA bottom layer and perforations with EVA heel shock absorber



Non-metallic penetration-resistant midsole

resistance to penetration up to **1,100 Newton** in accordance with the EN 20345 standard | **100% composite** | flexible | **antimagnetic** | **protects 100%** of the surface of the foot (as opposed to 85% on average for steel midsoles) | **lighter** than steel midsoles | conducts less heat and cold than a metal midsole



Non-metallic protective toe cap

provides protection against falling objects up to **200 J** and compression of up to **15,000 Newton** in accordance with the EN 20345 standard | **antimagnetic** | **comfortable** due to its ergonomic shape | extra wide | **20% lighter** than a conventional steel toe cap | **conducts less** heat and cold than a metal toe cap



Sustainability

Removable insock and heel cap made wholly or partly from recycled materials
Free from harmful substances in accordance with the uvex restricted substances list



FOCUS 2.0 SANDAL + PERFO S1 PL FO SR

double density PU **sole**, excellent levels of grip, shock absorption | ultra-breathable oiled nubuck leather **upper**, large perforations for additional ventilation, Velcro fastening (SANDAL) | ultra-breathable oiled nubuck perforated leather **upper**, reflective elements, non-metallic eyelets and hooks (PERFO) | 3D polyester mesh **lining** for excellent breathability, quick drying | metal-free **toe cap** | metal-free **penetration-resistant midsole** | anatomically shaped **hygienic insock**, textile top layer and perforations for breathability and moisture wicking, EVA heel shock absorber | **weight 565 g (SANDAL) and 575 g (PERFO)** in size 42

industry, logistics, general maintenance, dry and hot environments

SIZES **36 - 47** | EN 20345 : 2022
ART. NO. 67733 (SANDAL)
67723 (PERFO)



100% metal free

FOCUS 2.0 LOW + HIGH S3L FO SR

double density PU **sole**, excellent levels of grip, shock absorption | water-resistant oiled nubuck leather and textile **upper**, reflective elements, non-metallic eyelets and hooks, padded collar | 3D polyester mesh **lining** for excellent breathability, quick drying | metal-free **toe cap** | metal-free **penetration-resistant midsole** | anatomically shaped **hygienic insock**, textile top layer and perforations for breathability and moisture wicking, EVA heel shock absorber | **weight 570 g (LOW) and 615 g (HIGH)** in size 42

building and construction, industry, logistics, general maintenance, damp working conditions

SIZES **36 - 47** | EN 20345 : 2022
ART. NO. 67713 (LOW)
67703 (HIGH)



100% metal free



MACSOLE®
PLUS 2.0

THE MACSOLE® PLUS 2.0 RANGE WITH MACSOLE® RUBBER SOLE TECHNOLOGY IS EXTREMELY DURABLE MAKING IT SUITABLE FOR A MULTITUDE OF ENVIRONMENTS.

The abrasion-resistant all-terrain sole profile with outstanding grip, even in damp working conditions, is resistant to contact heat up to 300°C (HRD). The MACSOLE® PLUS 2.0 range appeals to wearers for its technical performance, comfort features and value for money.



01
EVA insert

in forefoot and heel for excellent shock absorption

02
Rubber scuff cap (SC)

high abrasion resistance | **extends product life** | suitable for those working in a crouching or kneeling position

03
Padded collar

for better comfort and protection of the malleolus and Achilles tendon areas



MACSOLE®
rubber sole

SR | resistance to oils & hydrocarbons, chemicals | resistance to contact heat up to 300°C (HRO standard) | antistatic

French (EU) sizing system, width 11

- 01** wide ground-bearing surface
- 02** pronounced heel
- 03** GRIPSTEP profile for extra grip on ladders & stairs
- 04** self-cleaning profile increases slip resistance
- 05** sharp tread profile improves grip
- 06** excellent abrasion resistance
- 07** front grooves for better grip

Insock

anatomically shaped | antistatic | made from 62% recycled materials

textile over layer: very good abrasion resistance | absorbant | fast drying



open cell foam bottom layer with good moisture absorption and wicking properties



Non-metallic penetration-resistant midsole

resistance to penetration up to **1,100 Newton** in accordance with the EN 20345 standard | **100% composite** | flexible | **antimagnetic** | **protects 100%** of the surface of the foot (as opposed to 85% on average for steel midsoles) | **lighter** than steel midsoles | conducts less heat and cold than a metal midsole



Non-metallic protective toe cap

provides protection against falling objects up to **200 J** and compression of up to **15,000 Newton** in accordance with the EN 20345 standard | **antimagnetic** | **comfortable** due to its ergonomic shape | extra wide | **20% lighter** than a conventional steel toe cap | **conducts less** heat and cold than a metal toe cap



Sustainability

Outsole and removable insock made wholly or partly from recycled materials
Free from harmful substances in accordance with the uvex restricted substances list



MACSTOPAC 100 BLACK HIGH S3 FO HRO SC SR

MACSOLE® PLUS 2.0 rubber **sole**, EVA insert in forefoot and heel for excellent shock absorption, excellent levels of grip, rubber scuff cap | water-resistant grain leather **upper**, fewer seams, padded collar | Distance-Mesh **lining** for excellent breathability, quick drying | stainless steel **toe cap** | stainless steel **penetration-resistant midsole** | anatomically shaped **hygienic insock** with bottom layer of open cell foam with very high moisture absorption capacity that's fast drying | **weight 750 g** in size 42

construction, heavy industry, hot ground, damp working conditions



SIZES **37 - 48** | EN 20345 : 2022
ART. NO. 67103



MACSTOPAC 100 BROWN HIGH S3 FO HRO SC SR

MACSOLE® PLUS 2.0 rubber **sole**, EVA insert in forefoot and heel for excellent shock absorption, excellent levels of grip, rubber scuff cap | water-resistant grain leather **upper**, fewer seams, padded collar | Distance-Mesh **lining** for excellent breathability, quick drying | stainless steel **toe cap** | stainless steel **penetration-resistant midsole** | anatomically shaped **hygienic insock** with bottom layer of open cell foam with very high moisture absorption capacity that's fast drying | **weight 750 g** in size 42

construction, heavy industry, hot ground, damp working conditions



SIZES **37 - 48** | EN 20345 : 2022
ART. NO. 67113





MACSTOPAC 300 HIGH + LOW S3L FO HRO SC SR

MACSOLE® PLUS 2.0 rubber **sole**, EVA insert in forefoot and heel for excellent shock absorption, excellent levels of grip, rubber scuff cap | water-resistant grain leather **upper**, fewer seams, padded collar | Distance-Mesh **lining** for excellent breathability, quick drying | metal-free **toe cap** | metal-free **penetration-resistant midsole** | anatomically shaped **hygienic insock** with bottom layer of open cell foam with very high moisture absorption capacity that's fast drying | **weight 640 g** (LOW) and **690 g** (HIGH) in size 42

construction, heavy industry, hot ground, damp working conditions



SIZES **37 - 48** | EN 20345 : 2022
ART. NO. 67533 (LOW)
67153 (HIGH)



MACPLUS 2.0 RIGGER S3L FO CI HI HRO SC SR

MACSOLE® PLUS 2.0 rubber **sole**, EVA insert in forefoot and heel for excellent shock absorption, excellent levels of grip, rubber scuff cap | water-resistant grain leather **upper**, fire-resistant Kevlar thread seams, very large handles | Distance-Mesh **lining** for excellent breathability, quick drying | metal-free **toe cap** | metal-free **penetration-resistant midsole** | anatomically shaped **hygienic insock** aluminised for improved thermal insulation | **weight 800 g** in size 42

construction, heavy industry, hot ground, damp working conditions



SIZES **37 - 48** | EN 20345 : 2022
ART. NO. 67783





MACASPHALT

THE MACASPHALT IS ENGINEERED FOR UNRIVALED RESISTANCE AND COMFORT WHEN WORKING ON ASPHALT.

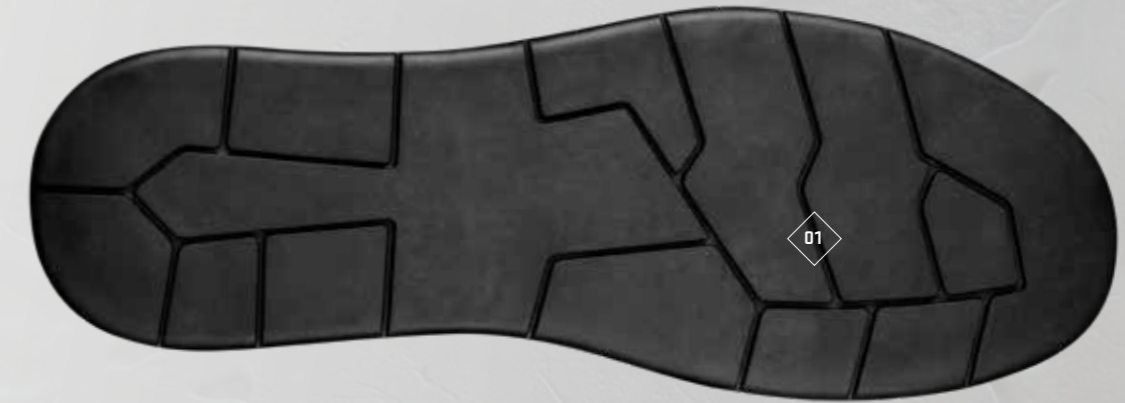
Designed to withstand the rigors of intense heat and wear, this robust safety boot features a multi-layer construction. A cutting-edge MACSOLE® ASPHALT outsole provides superior heat resistance, while a protective PU layer ensures optimal thermal insulation and comfort for all-day wear.



01
MACSOLE® rubber sole
with integrated heel support

02
Midssole core
for improved **shock and vibration absorption** over the entire surface of the foot | **anti-fatigue** effect

03
Reflective strip
increases the **visibility** of the wearer to others | **enhanced safety** when working at night



**MACSOLE®
rubber sole**

with superior abrasion resistance for **increased durability** | resistant to contact heat **up to 300°C** (HRD standard) | slip resistant | resistance to **oils and hydrocarbons** | resistance to **chemicals** | **antistatic**

French (EU) sizing system, width 11

01 tread pattern provides excellent slip resistance

Insock

removable | anatomically shaped | antistatic



superior abrasion-resistant non-woven textile

open-cell foam with high moisture absorption capacity | **aluminised** for improved thermal insulation

Innovative multi-layer design



Heat-insulating insock

Heat-insulating fleece on the insole

Penetration-resistance insert (steel)

Heat-insulating fleece

Midssole core (PU wedge)

MACSOLE® rubber sole



Non-metallic protective toe cap



provides protection against falling objects up to **200 J** and compression of up to **15,000 Newton** in accordance with the EN 20345 standard | **antimagnetic** | **comfortable** due to its ergonomic shape | **extra wide** | **20% lighter** than a conventional steel toe cap | **conducts less** heat and cold than a metal toe cap



Sustainability

Outsole made partly from recycled materials

Free from harmful substances in accordance with the uvex restricted substances list



MACASPHALT S3 FO HI HRO

MACSOLE® ASPHALT rubber **sole**, smooth flat tread pattern providing excellent slip resistance without marking the tarmac, PU layer for improved shock absorption | water-resistant grain leather **upper**, padded ankle collar and reflective strip | 3D polyester mesh **lining** for excellent breathability, quick drying | metal-free **toe cap** | stainless steel **penetration-resistant midsole** | anatomically shaped **hygienic insock** aluminised for improved thermal insulation | **weight 830 g** in size 42

for asphaltting

SIZES **38 - 50** | EN 20345: 2022
ART. NO. 62763





MULTIPLE FIT SYSTEM

This system allows us to offer different widths for models of safety shoes and boots of the same size.

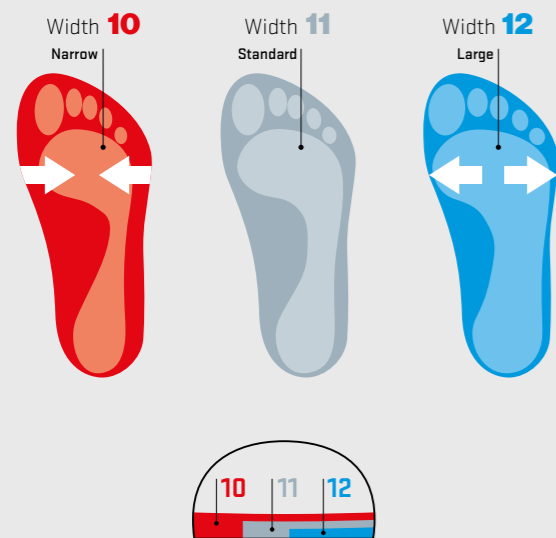
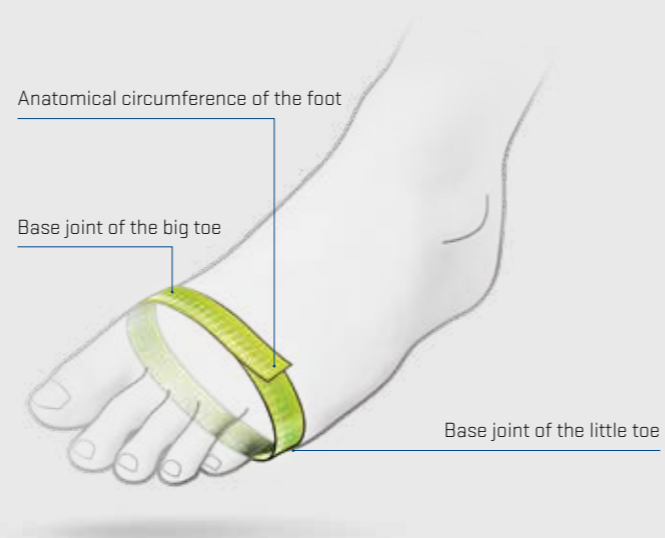
The width of the foot corresponds to the circumference of the widest part of the foot.

The width (or circumference) of the foot can be measured with a tape between the joints at the base of the big toe and the little toe.

It is also possible to measure the width of the foot at this point (see diagram below).

The standard width for Heckel safety shoes is width 11.

For models in the MACSOLE® ADVENTURE 3.0 range, we offer insole widths 10 and 12, which can be changed by the user for optimum fit.



Heckel shoe size	Foot length	UK Size	Width 10	Width 11	Width 12
			(narrow)	(standard)	(large)
Circumference up to					
35	223,4	3	222,5	228,5	240,5
36	230,0	3,5	227,0	233,0	245,0
37	236,7	4	231,5	237,5	249,5
38	243,4	5	236,0	242,0	254,0
39	250,0	6	240,5	246,5	258,5
40	256,7	6,5	245,0	251,0	263,0
41	263,3	7	249,5	255,5	267,5
42	270,0	8	254,0	260,0	272,0
43	276,7	9	258,5	264,5	276,5
44	283,3	10	263,0	269,0	281,0
45	290,0	10,5	267,5	273,5	285,5
46	296,6	11	272,0	278,0	290,0
47	303,3	12	276,5	282,5	294,5
48	310,0	13	281,0	287,0	299,0
49	316,6	14	285,5	291,5	303,5
50	323,3	14,5	290,0	296,0	308,0
51	329,9	15	294,5	300,5	312,5

MACSOLE® ADVENTURE 3.0 INSOCK

approved for MACSOLE® ADVENTURE 3.0 range | anatomically shaped | antistatic system | washable at 40°C | shock absorption



SIZES 35 - 51 - Width 10
ART. NO. 67962

SIZES 35 - 51 - Width 11
ART. NO. 67963

SIZES 35 - 51 - Width 12
ART. NO. 67964

RUN-R INSOCK

approved for RUN-R and SUXXEED OFFROAD ranges | anatomically shaped | antistatic system | washable at 30°C | shock absorption in heel and forefoot areas | arch support | high quality microfibre top layer, excellent abrasion resistance, moisture absorption, quick drying | bottom layer of open cell foam: good moisture absorption and wicking properties, quick drying



SIZES 37 - 48
ART. NO. 62997

SUXXEED INSOCK

approved for the SUXXEED range | anatomically shaped | antistatic system | washable at 40°C | shock absorption | textile surface structure | bottom layer of EVA foam



SIZES 35 - 47
ART. NO. 62996

SOCKS

colour black | composition 77% cotton 21% polyamide 2% elastane | available in 2 sizes 37/41 or 42/46 | individual packaging | suitable for retail



ART. NO. 1051118 (P37/41)
1051119 (P42/46)

MERCHANDISING



SHELF DISPLAY

material expanded 5 mm PVC | dimension 300 x 120 x 250 mm | fixing 4 adhesive transparent pads

ART. NO. 1051086



COUNTER DISPLAY

structure plexi | height 322 mm | presentation of 1 shoe

ART. NO. 1051055



STOOL

colour black | dimensions 38 x 38 x 38 cm | weight 2 kg | outside material polyester fabric 220 g

ART. NO. 1051106



PLASTIC DISPLAY MATERIAL

structure steel structure | plastic display material | height 185 cm | presentation on 2 sides | total 10 shoes | manually build with building tools included in delivery

ART. NO. 1051122

OVERVIEW

ART. NO.	DÉSIGNATION	SIZES	TYPE	EN ISO 20345	Building and Public Works - Construction shell	Craft - Second fit trades	Energy and Environment	Logistics - Transport - Services - Trade	Industry	Heavy industry	Agriculture - Green spaces	Page
67683	MACULTIMATE 3.0 RANGER GTX	36→48	Winter ranger	S7L FO CI HI HRO SC SR	■							24
67643	MACTRACK 3.0 GTX	36→48	Lace-up boot	S7L FO CI HI HRO SC SR	■							26
67343	MACEXPEDITION 3.0 HIGH	36→48	Lace-up boot	S7L FO CI HI HRO SC SR		■						27
67393	MACEXPEDITION 3.0 LOW BOA	36→48	Shoe	S7L FO CI HI HRO SC SR		■						28
67663	MACWILD 3.0 LOW BOA	36→48	Shoe	S1 PL FO CI HI HRO SC SR		■		■				29
67373	MACCROSSROAD 3.0 LOW BOA	36→48	Shoe	S3L FO CI HI HRO SC SR	■	■	■			■	■	30
67363	MACCROSSROAD 3.0 HIGH BOA	36→48	Lace-up boot	S3L FO CI HI HRO SC SR	■	■	■			■	■	31
67743	MACCROSSROAD 3.0 LOW META	36→48	Lace-up boot	S3L FO M CI HI HRO SC SR	■	■	■			■	■	32
67353	MACCROSSROAD 3.0 HIGH META	36→48	Lace-up boot	S3L FO M CI HI HRO SC SR	■	■	■			■	■	32
67303	MACCROSSROAD BROWN 3.0 HIGH	36→48	Lace-up boot	S3L FO CI HI HRO SC SR	■	■	■			■	■	33
67323	MACCROSSROAD 3.0 LOW	36→48	Shoe	S3L FO CI HI HRO SC SR	■	■	■			■	■	34
67313	MACCROSSROAD 3.0 HIGH	36→48	Lace-up boot	S3L FO CI HI HRO SC SR	■	■	■			■	■	35
62773	MACEXPLORE BROWN 3.0 RANGER INOX	36→48	Ranger	S3 FO CI HI HRO SC SR	■		■			■		36
67673	MACEXPLORE BLACK 3.0 RANGER ZIPPER	36→48	Ranger	S3L FO CI HI HRO SC SR	■		■			■		37
67453	MS 100 HIGH	36→48	Lace-up boot	S1 PL FO HRO SC SR		■						42
67403	MS 100 LOW	36→48	Shoe	S1 PL FO HRO SC SR		■						43
67443	MS 110 SANDAL	36→48	Sandal	S1 PL FO HRO SC SR		■						44
67433	MS 300 HIGH	36→48	Lace-up boot	S3L FO HRO SC SR		■	■	■	■			45
67473	MS 300 LOW	36→48	Shoe	S3L FO HRO SC SR		■	■	■	■			45
67603	MS 10 LOW	36→48	Shoe	S1 PL FO HRO SR		■						46
67633	MS 30 HIGH	36→48	Lace-up boot	S3L FO HRO SR		■						47
67623	MS 30 LOW	36→48	Shoe	S3L FO HRO SR		■						47
67503	RUN-R PLANET 100 HIGH	35→48	Lace-up boot	S1 PL FO SR		■						52
67073	RUN-R PLANET 100 LOW	35→48	Shoe	S1 PL FO SR		■						53
67593	RUN-R PLANET 300 HIGH	35→48	Lace-up boot	S3L FO SR		■						54
67583	RUN-R PLANET 300 LOW	35→48	Shoe	S3L FO SR		■						55
62583	RUN-R 100 LOW	37→48	Shoe	S1 PL FO SR		■						56
62593	RUN-R 200	37→48	Shoe	S1 PL FO SR		■						57
62663	RUN-R 300 HIGH	37→48	Lace-up boot	S3L FO SR		■	■	■	■			58
62603	RUN-R 300 LOW	37→48	Shoe	S3L FO SR		■	■	■	■			58
62613	RUN-R 400 HIGH	37→48	Lace-up boot	S3L FO SR		■	■	■	■			59
62653	RUN-R 400 LOW	37→48	Shoe	S3L FO SR		■	■	■	■			59
67203	SUXXEED OFFROAD BLACK HIGH	36→48	Lace-up boot	S3L FO LG CI SC SR	■	■	■	■	■		■	64
67283	SUXXEED OFFROAD BLACK LOW	36→48	Shoe	S3L FO LG CI SC SR	■	■	■	■	■		■	64
67233	SUXXEED OFFROAD RANGER	36→48	Ranger	S3 FO LG CI SC SR	■	■	■	■		■		65
62733	SUXXEED OFFROAD HIGH	36→48	Lace-up boot	S3L FO LG CI SC SR	■	■	■	■	■		■	66
62743	SUXXEED OFFROAD LOW	36→48	Shoe	S3L FO LG CI SC SR	■	■	■	■	■		■	66
62753	SUXXEED OFFROAD SNOW	36→48	Winter boot	S3L FO LG CI SC SR	■	■	■	■	■		■	67
67273	SUXXEED OFFROAD RIGGER INOX	36→48	Boot	S3 FO LG CI SC SR	■	■	■	■	■		■	67
62563	SUXXEED S1P LOW	38→47	Shoe	S1P SRC		■			■			72
63903	SUXXEED S3 HIGH	35→47	Lace-up boot	S3 SRC		■	■	■	■			73
62553	SUXXEED S3 LOW	35→47	Shoe	S3 SRC		■	■	■	■			73
67723	FOCUS 2.0 PERFO	36→47	Shoe	S1 PL FO SR		■			■			78
67733	FOCUS 2.0 SANDAL	36→47	Sandal	S1 PL FO SR		■			■			78
67703	FOCUS 2.0 HIGH	36→47	Lace-up boot	S3L FO SR		■	■	■	■			79
67713	FOCUS 2.0 LOW	36→47	Shoe	S3L FO SR		■	■	■	■			79
67103	MACSTOPAC 100 BLACK HIGH	37→48	Lace-up boot	S3 FO HRO SC SR	■		■			■		84
67113	MACSTOPAC 100 BROWN HIGH	37→48	Lace-up boot	S3 FO HRO SC SR	■		■			■		85
67153	MACSTOPAC 300 HIGH	37→48	Lace-up boot	S3L FO HRO SC SR	■		■			■		86
67533	MACSTOPAC 300 LOW	37→48	Shoe	S3L FO HRO SC SR	■		■			■		86
67783	MACPLUS 2.0 RIGGER	37→48	Boot	S3L FO HRO SC SR	■		■			■		87
62763	MACASPHALT	38→50	Lace-up boot	S3 FO HI HRO	■							92

UVEX HECKEL s.a.s

44 rue d'Engwiller | La Walck | 67350 Val de Moder | France

Tel. +33 388 07 61 08 | **Fax** +33 388 72 51 06

E-Mail France contact.france@uvex-heckel.fr

E-Mail Export contact.export@uvex-heckel.fr

www.heckel.fr

