

uvex

uvex 2 construction

The essential allrounder.
Safe. Innovative. Robust.



protecting people

uvex

Safe. Innovative. Robust.

The new uvex 2 construction was developed to meet the specific challenges of the construction industry. The construction and engineering industries really put workers and their footwear to the test. In addition to high mechanical stress, extreme weather conditions are often a factor too.

Thanks to their intelligent design and innovative technologies, the uvex 2 construction models offer reliable protection, stability and exceptional comfort.



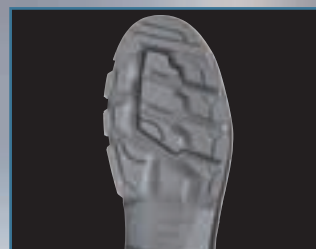
You can find more information at www.uvex-safety.com/uvex2construction



Stability and ankle protection
The anatomically shaped heel basket provides stability and protection against twisted ankles, especially on uneven surfaces.



Increased visibility
Reflective side strips provide optimal visibility and safety, especially in poorly lit working environments.



Safe slip resistance
The rough, self-cleaning tread ensures perfect grip without slipping, even on ladders or smooth surfaces.



uvex waterstop technology
uvex waterstop technology reliably protects against water penetration for four times longer than required by the standard.



65101
65102
65103



65121
65122
65123



65131
65132
65133

| uvex 2 construction | Lace-up boot | Lace-up boot | Lace-up boot |
|-------------------------------|-----------------------------|-----------------------------|-----------------------------|
| Art. no. Width 10 | 65101 | 65121 | 65131 |
| Art. no. Width 11 | 65102 | 65122 | 65132 |
| Art. no. Width 12 | 65103 | 65123 | 65133 |
| Standard | EN ISO 20345:2011 S3 SRC | EN ISO 20345:2011 S3 SRC | EN ISO 20345:2011 S3 SRC |
| Upper | water repellent leather | water repellent leather | water repellent leather |
| Lining | textile | textile | textile |
| Toe cap | metal-free | metal-free | metal-free |
| Penetration-resistant midsole | steel | steel | steel |
| Sizes | 35 to 52 | 35 to 52 | 35 to 52 |
| Order unit | PR | PR | PR |

clima zone



► uvex recommends footwear with steel midsoles for demanding applications such as construction and construction-related industries.



uvex



The essential allrounder. Safe. Innovative. Robust.

UVEX ARBEITSSCHUTZ GMBH
Wuerzburger Straße 181-189
90766 Fürth
GERMANY

T: +49 911 9736 6387
E: info@uvex-safety.be
I: uvex-safety.be
I: uvex-safety.nl



PEFC certified
This product is from
sustainably managed forests
and controlled sources.

www.pefc.org

protecting people

uvex-safety.be

