

 **HECKEL**
PERFORMANCE WITH STYLE





P 002	BRAND STORY
P 004	PROTECTING PLANET
P 006	TECHNOLOGIES
P 016	STANDARDS
P 018	MACSOLE[®] SPORT
P 028	MACSOLE[®] ADVENTURE 3.0
P 038	MACSOLE[®] X
P 048	RUN-R
P 058	SUXXEED OFFROAD
P 066	SUXXEED
P 072	FOCUS 2.0
P 078	MACSOLE[®] PLUS 2.0
P 084	MACSOLE[®] 1.0
P 088	XXL PRO
P 091	ACCESSORIES
P 092	MERCHANDISING
P 093	OVERVIEW



PERFORMANCE WITH STYLE

OUR SLOGAN REFLECTS OUR GOAL.

Heckel, based in La Walck, France, has been a world leader in the manufacture of safety footwear since 1970. Our expertise in this field has meant Heckel has become regarded as an industry expert. In 2001 Heckel became part of the uvex group, a pioneer in personal protection equipment (PPE).

The Heckel name is synonymous with high performance. When worn, users are reassured that they are fully protected by their safety footwear and equipped for even the most extreme conditions.

We never compromise on the quality and control of our products as it is the best way of guaranteeing the performance of our products.

We are convinced that a wearer's safety stems from a combination of the most innovative materials, technologies and good design. Looking good whilst providing total protection is Heckel's goal.

PROTECTING PLANET

OUR COMMITMENT TO PEOPLE AND THE PLANET.

THE UVEX COMMITMENT TO SUSTAINABILITY: A PROMISE TO PEOPLE AND THE PLANET

« protecting people » is the mission behind all uvex group brands. As a member since 2001, Heckel aligns itself with this philosophy. The aim is to offer people exactly the right protection they need with our own products.

However, our definition of "protection" does not just refer to preventing physical injury - it also takes on meaning in a wider social, ecological and economic context. Our pledge to protect society and the environment using the group-wide protecting planet concept is therefore derived from this mission.

This means that we monitor, evaluate and optimise all the steps in the value creation chain in a comprehensive manner to produce the most durable and sustainable personal protective equipment that we can.



In order to conserve resources and protect the environment, we process various types of recycled materials. These include, for example, recycled polyester from PET plastics from drinking bottles, which in turn is used to manufacture uppers. Many insoles are also made with recycled materials.



We believe that plant and bio-based materials represent the future. For this reason, bamboo fibres are used in the lining of some safety shoes.



We refrain from the use of substances that are hazardous to health in accordance with the REACH regulation (EU). In addition, the group has developed its own list of Restricted Substances that go beyond the applicable EU directives. All products respect the user and the environment.



As part of our sustainability strategy, we have defined a target of continually increasing the proportion of environmentally friendly packaging we use. In this context, shoeboxes, user manual and tissue paper that the safety shoes are wrapped in are made from recycled material.

OUR TECHNOLOGIES

YOU ARE THE EXPERTS THAT WE LISTEN TO WHEN DESIGNING NEW SAFETY FOOTWEAR. YOUR REQUIREMENTS ARE WHAT DRIVES OUR INNOVATION PROCESSES TO DELIVER FOOTWEAR THAT WILL PROTECT YOU ON A DAILY BASIS.

HECKEL FOOTWEAR OFFERS A NUMBER OF SAFETY AND PROTECTION SPECIFICATIONS. IN ORDER TO FACILITATE UNDERSTANDING OF THESE SPECIFICATIONS, WE USE VARIOUS PICTOGRAMS. BELOW IS THE LIST OF THOSE PICTOGRAMS AND THEIR MEANING.

100% metal free

The entire shoe is free of any metal parts



Insole with thermal insulation

Insulation against heat and cold



Non-metallic protective toe cap

Provides protection against falling objects up to 200 J and compression of up to 15,000 Newton in accordance with the EN 20345 standard | 100% antimagnetic | comfortable due to its ergonomic shape | extra wide | 20% lighter than a conventional steel toe cap | conducts less heat and cold than a metal toe cap



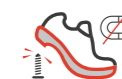
Resistance to contact heat (HRO)

Resistance to temperatures of up to 300°C in accordance with the EN 20345 standard



Protective steel toe cap

Provides protection against falling objects up to 200 J and compression of up to 15,000 Newton in accordance with the EN 20345 standard



Non-metallic penetration-resistant midsole

Resistance to penetration up to 1,100 Newton in accordance with the EN 20345 standard | 100% composite | flexible | antimagnetic | protects 100% of the surface of the foot (as opposed to 85% on average for steel soles) | lighter than steel soles | conducts less heat and cold than a metal sole



Metatarsal protection (M)

Protects metatarsal against impacts to 100 J in accordance with the EN 20345 standard



Stainless steel penetration-resistant midsole

Resistance to penetration up to 1,100 Newton in accordance with the EN 20345 standard



Resistance to water penetration

WRU (water-resistant upper) or WR (water-resistant) in accordance with the EN 20345 standard



ESD

Meets the ESD specification with volume resistance under 35 megaohms



Flame-resistant stitching



MACSOLE® RUBBER TECHNOLOGY

For 2001, we have been developing our own rubber sole technology: MACSOLE®. MACSOLE® soles, made from an exclusive mixture of nitrile rubbers, offer unparalleled performances in terms of safety and longevity in the most extreme conditions.



Durability

MACSOLE® soles are made of unique, exclusive compounds offering exceptional abrasion resistance and prolong the service life of our products.

Comfort

The natural elasticity of rubber ensures long-lasting shock absorption. MACSOLE® footwear helps to lower the risk of accidents by reducing fatigue caused by prolonged walking or standing.

Multipurpose

Experience durability and excellent level of grip, the MACSOLE® rubber soles are extremely versatile.



Anti-slip

Our exclusive MACSOLE® rubber formula offers unrivalled grip, far exceeding the requirements of EN 13287.



Thermal insulation

The exceptional strength of rubber at extreme temperatures ensures unparalleled thermal insulation against heat and cold. Only rubber resists to contact heat up to 300°C and allows footwear to meet the HRO standard.

SAFETY SHOES WITH MACSOLE® RUBBER SOLE

MACSOLE® SPORT

MACSOLE® technology for all those working in light industry, automobile industry and service industries



MACSOLE® ADVENTURE 3.0

MACSOLE® technology for people who works outdoors and on uneven terrain



MACSOLE® X

MACSOLE® technology for all those working in demanding or even extreme conditions with exposure to bad weather, extreme colds and uneven terrain.



MACSOLE® PLUS 2.0

MACSOLE® technology ideal for a multitude of applications and value for money



**COMFORT & ANTI-FATIGUE
MACABSORB TECHNOLOGY**

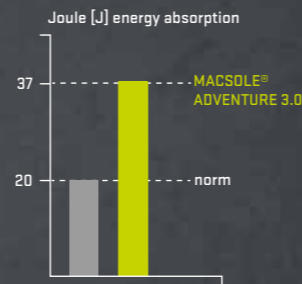


EVA insert
in heel

EVA insert
in forefoot

**ENERGY
ABSORPTION
85%**

higher energy absorption
than that specified by
EN ISO 20345 standard



**A NEW DEFINITION OF MACSOLE®
PERFORMANCE**

The new models in the MACSOLE® ADVENTURE 3.0 range combine the natural elasticity properties of rubber with the new MACABSORB technology: EVA foam inserts are placed at the forefoot and heel for a better shock absorption superior to the requirements of the standard, significantly improving wearing comfort and reducing fatigue in the feet.



ULTRA LIGHT & DURABLE CUSHIONING

**MACFOAM
TECHNOLOGY**

Inspired by materials used in the world of sport, we've developed the innovative MACFOAM midsole technology using Phylon, a compressed EVA.

Moulded at a specific temperature then expanded, this EVA has an unique structure made up of air and solid material, making it ultra-light with high shock absorption properties and exceptional flexibility.



SHOCK ABSORPTION

MACFOAM is an extra layer of cushioning along the entire surface of the shoe



LIGHTWEIGHT

The unique manufacturing process makes Phylon lighter than other components



FLEXIBILITY

One of the key characteristics of Phylon is its excellent flexibility, allowing it to support the natural movements of the foot

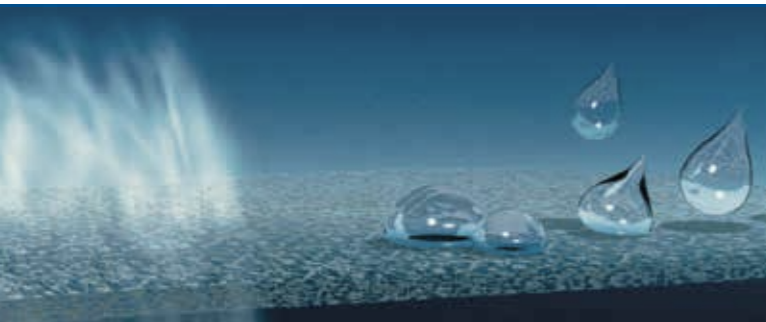


RESILIENCE

The MACFOAM comfort layer retains its excellent cushioning properties throughout the shoe's lifespan



WATERPROOFNESS AND BREATHABILITY



THE GORE-TEX TECHNOLOGY

The GORE-TEX membrane has microscopic pores 20,000 times smaller than a drop of water but 700 times larger than one water vapour molecule. It thereby enables sweat to escape, while protecting you from rain and snow.

GORE-TEX Footwear keep your feet dry and comfortable.

PROVEN QUALITY UNDER UNCOMPROMISING TESTING CONDITIONS

GORE-TEX Footwear by far exceeds the requirements of the standard EN ISO 20345/347 with respect to waterproofness, breathability and durability.



Durable Waterproofness

GORE-TEX Footwear has to withstand up to 300,000 flex movements (80 hours) in ankle-high water - without allowing one single drop of water to penetrate inside the boot.

EN ISO standard 20344 requires only 4,800 flexes (80 minutes) and 3 cm² water entry is allowed.



Breathability

The materials used in GORE-TEX Footwear achieve a breathability value up to six times higher than the values specified in EN ISO standard 20345/347.



Durability

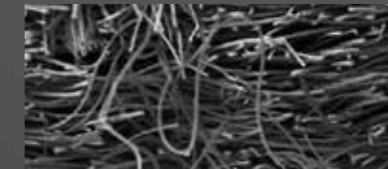
Inner lining and upper materials of GORE-TEX footwear have to withstand up to four times more abrasion movement than specified in by the EN ISO standard.

GORE-TEX INSULATED COMFORT FOOTWEAR

For outdoor working conditions, in great cold, works in mountains or cold-storage rooms, the new GORE-TEX footwear laminate development combines efficient thermal insulation with even 15% less weight with the same level of thermal protection.

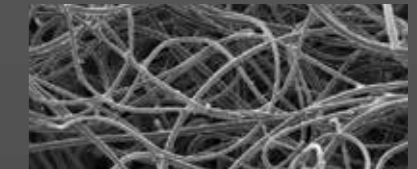
CONVENTIONAL INSULATION VERSUS NEW GORE-TEX INSULATION

Conventional insulation

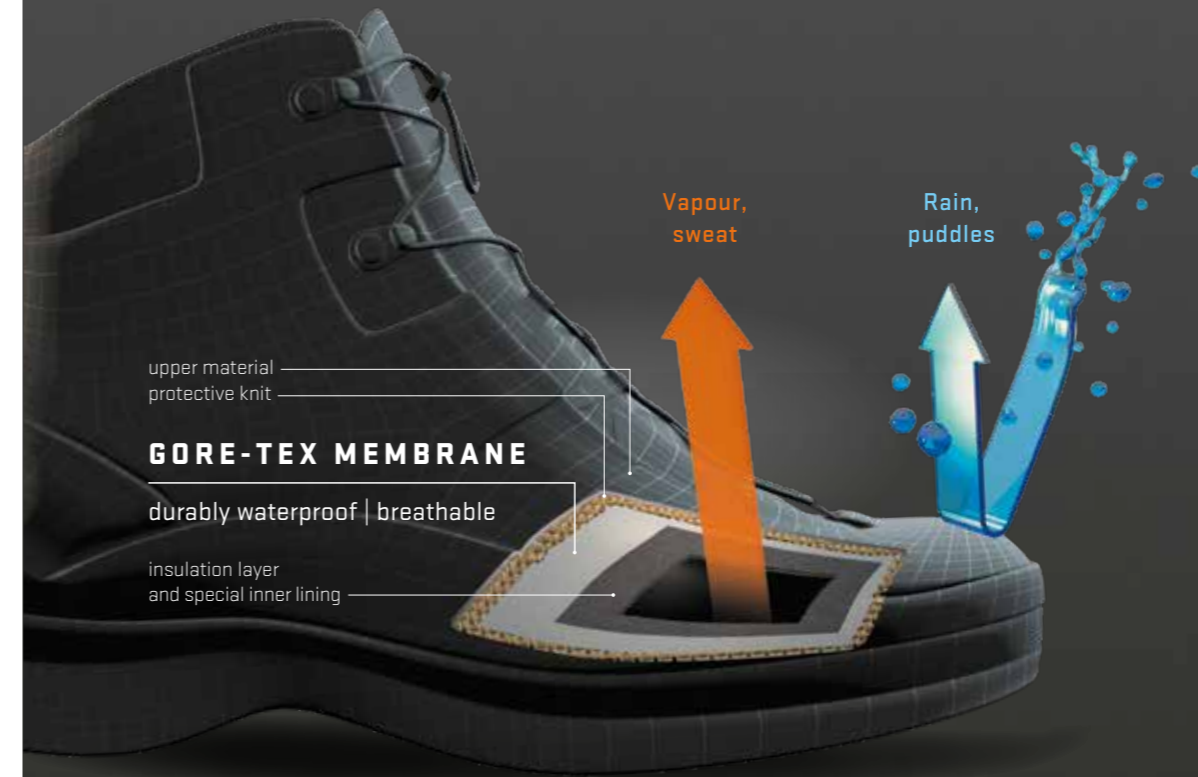


more solid fibres **increase weight** | the flat 2D layered structure **prevents air from entering** | **loss of insulating capacity** when compressed | fibres bond together **limiting flexibility**

New GORE-TEX insulation



15% lighter | hollow and fewer fibres **reduce weight** | the 3D structure makes it possible to store more air for **increased insulation** | spiral effect ensures **flexibility and comfort**



GORE-TEX MEMBRANE KEEPS THE INSULATION DRY

The durably waterproof and breathable GORE-TEX membrane ensures that the insulation is reliably protected against water penetration from the outside. At the same time, the sweat can easily escape to the outside in the form of water vapour.

The insulation stays dry and maintains its insulation efficiency. Your feet stay dry and comfortable.

Wet means cold, dry means warm !



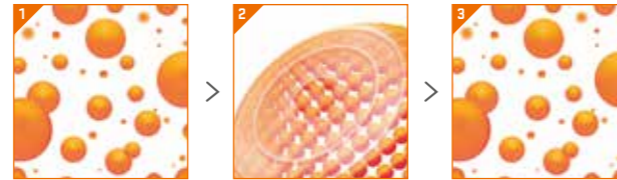
METATARSAL PROTECTION

PATENDED TECHNOLOGY

D3O® uses patented and exclusive technologies made from non-Newtonian fluid to manufacture flexible materials with impact absorption.

D3O® offers an ergonomic solution guaranteeing safe metatarsal protection against impacts, without restricting freedom of movement and ensuring high levels of comfort.

HOW DOES D3O® TECHNOLOGY WORK ?



Ultra flexible material

Absorbs and dissipates impact energy

Returns to flexible state

ENHANCED COMFORT AND SAFETY

PROTECTION FULLY INTEGRATED INTO THE TONGUE

SOFT AND FLEXIBLE

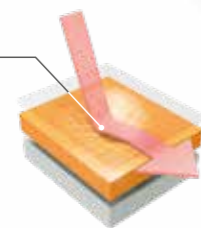
The protective component moulds to the shape of the foot, giving the wearer complete freedom of movement.

THIN AND LIGHTWEIGHT

Does not contribute to the overall weight of the safety shoe.

IMPACT RESISTANT TO 100 JOULES

M additional requirement according to EN ISO 20345 standard.



STREAMLINED

Tapered edges for seamless integration

D3O® is a registered trademark of Design Blue Limited.



EASY, FAST AND PRECISE ADJUSTMENT

THE BOA® FIT SYSTEM

Delivering fit solutions purpose-built for performance, the BOA® Fit System has revolutionised traditional lacing. It delivers fast, ultra-efficient, precision fit for maximum comfort and security.

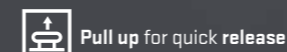
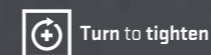
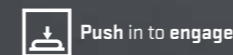
MICRO-ADJUSTABLE DIAL

LIGHTWEIGHT, SUPER-STRONG LACE

LOW-FRICTION GUIDES FOR LACE



HOW IT WORKS



THE BOA® BENEFITS

FAST

The BOA® Fit System allows you to get your gear on and off fast and easily, no matter the conditions.

CUSTOMIZED

Make instant micro-adjustments for a precise and custom fit, the BOA® Fit System improves performance and comfort - anytime, anywhere.

CONNECTED

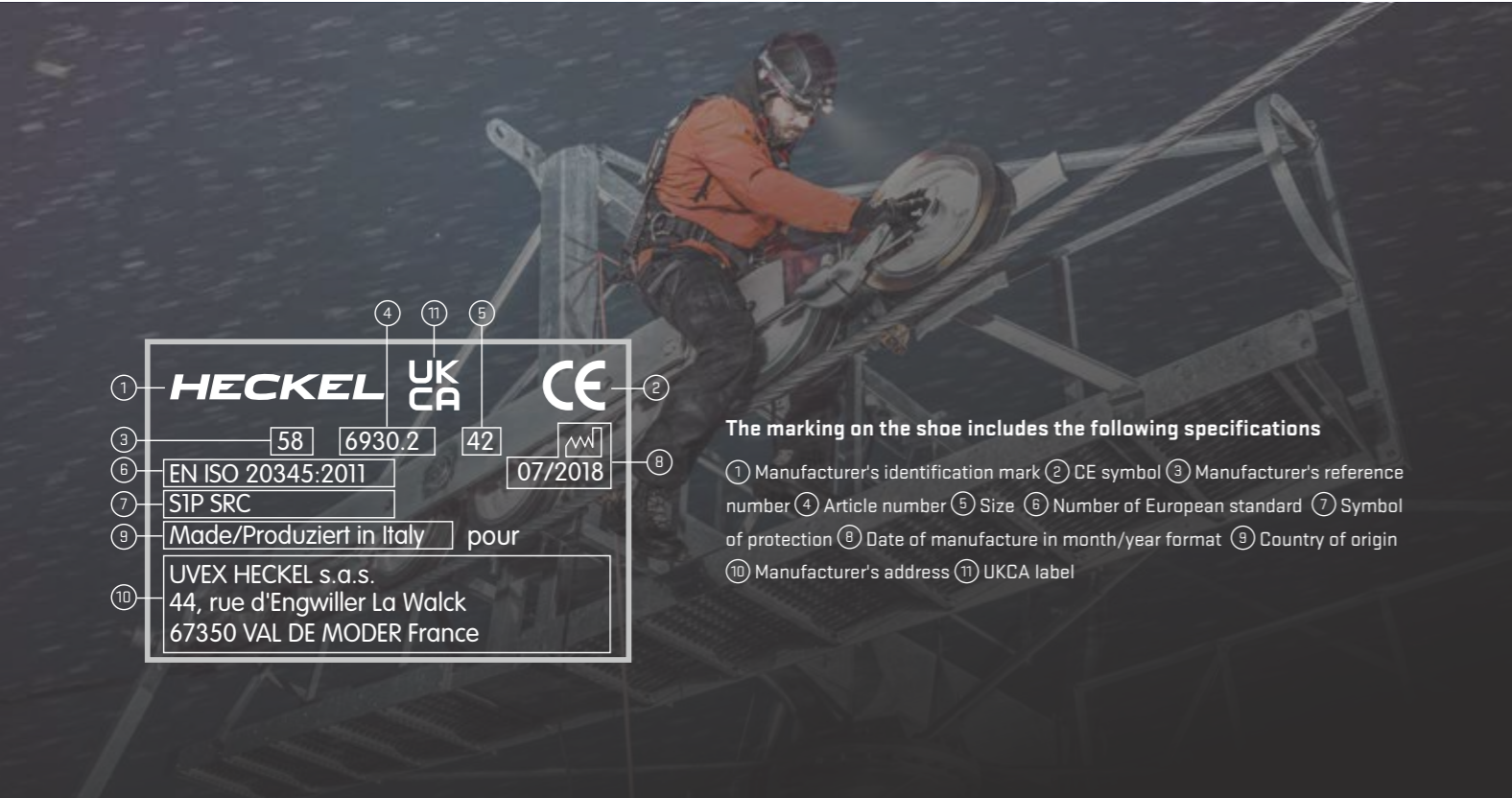
By offering you a micro-adjustable fit, BOA® allows you to be one with your equipment for an improved dexterity, responsiveness and control.

DURABLE

The BOA® Fit System dials and laces are guaranteed for the lifetime of the product on which they are integrated.

BOA® is a registered trademark of Boa Technology Inc.

STANDARDS



① **HECKEL** UK CA **CE** ②
 ③ 58 6930.2 42 ④ ⑤ ⑥ ⑦
 ⑧ EN ISO 20345:2011 07/2018 ⑨
 ⑩ S1P SRC
 ⑪ Made/Produziert in Italy pour
 ⑫ UVEX HECKEL s.a.s.
 ⑬ 44, rue d'Engwiller La Walck
 ⑭ 67350 VAL DE MODER France

The marking on the shoe includes the following specifications

- ① Manufacturer's identification mark
- ② CE symbol
- ③ Manufacturer's reference number
- ④ Article number
- ⑤ Size
- ⑥ Number of European standard
- ⑦ Symbol of protection
- ⑧ Date of manufacture in month/year format
- ⑨ Country of origin
- ⑩ Manufacturer's address
- ⑪ UKCA label

FOOTWEAR SYMBOLS FOR INDUSTRIAL USAGE

Basic requirements/additional requirements / categories e.g. for leather shoes	safety footwear EN ISO 20345	protective footwear EN ISO 20346	work footwear EN ISO 20347	The environments in which safety footwear are used will vary and are dependent on the types of hazard. Additional requirements may need to be considered, for example, insulation against heat or cold, or penetration-resistant midsole. This footwear will have to show the relevant identification. The inspection criteria for all basic and additional requirements are laid down in the EN ISO 20344 standard.
basic requirements for shoes and impact resistance of toe caps	SB 200 joules	PB 100 joules	OB No requirement	
additional requirements: closed heel antistatic energy absorption around heel fuel resistant	S1	P1	O1 (without fuel resistance)	
additional requirements: as above, plus water penetration water absorption	S2	P2	O2	
additional requirements: as above, plus penetration resistance* cleated outsole	S3	P3	O3	
Basic requirements/additional requirements/categories e.g. for shoes made from PVC or PU				
basic requirements for shoes and impact resistance of toe caps	SB 200 joules	PB 100 joules	OB No requirement	
additional requirements: antistatic energy absorption around heel fuel resistant	S4	P4	O4	
penetration resistance* cleated outsole	S5	P5	O5	

*Puncture-resistant (marked as P or S3) - Please note that the puncture resistance has been laboratory-tested in using a spike of 4.5 mm in diameter and a force of 1.100 Newton. A greater force or thinner spikes could increase the risk of penetration. When necessary, alternative preventive measures must be taken into consideration.

A revision of the EN ISO 20344 et seq. series of standards will be published at the turn of the year 2022. If you have any questions about any of the upcoming changes or additions, please contact your sales representative.

Any model certified after December 2007 must meet one of the three criteria below and be marked with the corresponding symbol

Label	Characteristics tested	Test conditions	Friction coefficient
SRA	slip resistance on ceramic tile floors with sodium lauryl sulfate solution (SLS)	forward slip of the heel forward slip on a flat surface	→ 0,28 → 0,32
SRB	slip resistance on steel floors with glycerol	forward slip of the heel forward slip on a flat surface	→ 0,13 → 0,18
SRC	slip resistance on ceramic tile floors with sodium lauryl sulfate solution and on steel floors with glycerol	SRA and SRB	

ADDITIONAL REQUIREMENTS FOR SPECIAL APPLICATIONS WITH CORRESPONDING SYMBOLS

- May satisfy the standard though not required in this case
- Meets the specified requirement

Symbol	Risks covered	EN ISO 20345 : 2011					EN ISO 20347			
		SB	S1	S2	S3	S5	OB	O1	O2	O3
-	basic									
P	penetration-resistant sole									
A	antistatic footwear									
E	energy absorption around heel									
HI	heat insulation									
CI	cold insulation									
WRU	water resistance of upper									
HRO	heat resistance of outsole (+300°C/min)									
WR	whole shoe waterproof									
M	metatarsal protection									
CR	cut-resistant									
FO	sole resistant to hydrocarbons									



MACSOLE®
SPORT

**THE MACSOLE® SPORT RANGE TAKES
INSPIRATION FROM THE WORLD OF
SPORT IN TERMS OF ITS DESIGN AND
THE PERFORMANCE IT OFFERS:**

Innovative MACFOAM midsole technology guarantees lightness, flexibility and high shock absorption performance. This range is designed for people who have to walk a lot or stand for a long time in warehousing and logistics, local authorities, light industry or for tradespeople.



01
MACFOAM comfort layer
high performance shock absorption | remains light and flexible for the lifetime of the shoe



02
Superlight tongue
ultra-thin and light | enhanced climate management | gusset keeps debris out

03
Rubber-coated toe
prolongs product life | designed for people who have to kneel or crouch throughout the day



MACSOLE®
rubber sole
with **MACFOAM**
comfort layer

SRC | resistance to oils & hydrocarbons, chemicals | resistance to contact heat up to 300°C (HRD standard) | antistatic

French (EU) sizing system, width 11

- 01** forefoot grooves for better grip during propulsion
- 02** multiple studs on the sides of the sole for extra grip
- 03** GRIPSTEP profile for ladders and stairs
- 04** modern, sporty profile that supports the natural rolling motion of the foot
- 05** heel grooves for better grip

Hygienic insole*

removable | anatomically shaped



microfibre top layer for better resistance to abrasion and general wear and tear | very high moisture absorption capacity & fast drying | with forefoot & heel shock absorbers

bottom layer made of **85% recycled** open cell foam with high shock absorption capacity & breathability | fast drying



Non-metallic penetration-resistant midsole

resistance to penetration up to **1,100 Newton** in accordance with the EN 20345 standard | **100% composite** | flexible | **antimagnetic** | **protects 100%** of the surface of the foot (as opposed to 85% on average for steel soles) | **lighter** than steel soles | conducts less heat and cold than a metal sole



Non-metallic protective toe cap

provides protection against falling objects up to **200 J** and compression of up to **15,000 Newton** in accordance with the EN 20345 standard | **antimagnetic** | **comfortable** due to its ergonomic shape | extra wide | **20% lighter** than a conventional steel toe cap | **conducts less** heat and cold than a metal toe cap



*for models 67453, 67403, 67443, 67473 and 67433



S1P



SRC



MS 100 HIGH S1P HRO SRC

MACSOLE® SPORT rubber **sole**, excellent levels of grip | new MACFOAM technology **intermediate sole** offering high performance shock absorption, lightweight and reinforced elasticity | very breathable micromesh textile **upper**, reinforced TPU scuff cap, 50% recycled TPR heel cap for a greater stability | 3D mesh polyester **lining** | ultra-thin microfibre superlight **tongue** | metal-free **toe cap** | metal-free **penetration-resistant midsole** | anatomically shaped **hygienic insole** with bottom layer made of 85% of recycled open cell foam | **weight 525 g** in size 42



100% metal free



craft trades, second fit trades, logistics, transport, industry, services, local authorities, dry environments

SIZES **36 - 48** | EN ISO 20345 : 2011
ART. NO. 67453



MS 100 LOW S1P HRO SRC

MACSOLE® SPORT rubber **sole**, excellent levels of grip | new MACFOAM technology **intermediate sole** offering high performance shock absorption, lightweight and reinforced elasticity | very breathable micromesh textile **upper**, reinforced TPU scuff cap, 50% recycled TPR heel cap for a greater stability | 3D mesh polyester **lining** | ultra-thin microfibre superlight **tongue** | metal-free **toe cap** | metal-free **penetration-resistant midsole** | anatomically shaped **hygienic insole** with bottom layer made of 85% of recycled open cell foam | **weight 500 g** in size 42



100% metal free



craft trades, second fit trades, logistics, transport, industry, services, local authorities, dry environments

SIZES **36 - 48** | EN ISO 20345 : 2011
ART. NO. 67403





MS 110 SANDAL S1P HRO SRC

MACSOLE® SPORT rubber **sole**, excellent levels of grip | new MACFOAM technology **intermediate sole** offering high performance shock absorption, lightweight and reinforced elasticity | very breathable micromesh textile **upper**, large perforations for high breathability, reinforced TPU scuff cap, 50% recycled TPR heel cap for a better stability | 3D mesh polyester **lining** | ultra-thin microfibre superlight **tongue** | metal-free **toe cap** | metal-free **penetration-resistant midsole** | anatomically shaped **hygienic insole** with bottom layer made of 85% of recycled open cell foam | **weight 550 g** in size 42

craft trades, second fit trades, logistics, transport, industry, services, local authorities, dry and hot environments

SIZES **36-48** | EN ISO 20345 : 2011
ART. NO. 67443



100% metal free



MS 300 LOW + HIGH S3 HRO SRC

MACSOLE® SPORT rubber **sole**, excellent levels of grip | new MACFOAM technology **intermediate sole** offering high performance shock absorption, lightweight and reinforced elasticity | water-resistant oiled full grain leather **upper**, rubber-coated toe, 50% recycled TPR heel cap for a high stability | 3D mesh polyester **lining** | ultra-thin microfibre superlight **tongue** | metal-free **toe cap** | metal-free **penetration-resistant midsole** | anatomically shaped **hygienic insole** with bottom layer made of 85% of recycled open cell foam | **weight 540 g (LOW) and 590 g (HIGH)** in size 42

craft trades, second fit trades, logistics, transport, industry, services, local authorities, wet environments

SIZES **36 - 48** | EN ISO 20345 : 2011
ART. NO. 67473 (LOW)
67433 (HIGH)



100% metal free





S1P



S3



MS 10 LOW S1P HRO SRC

MACSOLE® SPORT rubber **sole**, excellent levels of grip | new MACFOAM technology **intermediate sole** offering high performance shock absorption, lightweight and reinforced elasticity | textile **upper**, reinforced TPU scuff cap | 3D mesh polyester **lining** | metal-free **toe cap** | metal-free **penetration-resistant midsole** | anatomically shaped **hygienic insole** with very high moisture absorption | **weight 460 g** in size 42



100% metal free



SIZES **36-48** | EN ISO 20345 : 2011
ART. NO. 67603

craft trades, second fit trades,
logistics, transport, industry, services,
local authorities, dry environments

MS 30 LOW + HIGH S3 HRO SRC

MACSOLE® SPORT rubber **sole**, excellent levels of grip | new MACFOAM technology **intermediate sole** offering high performance shock absorption, lightweight and reinforced elasticity | water-resistant oiled full grain leather and microfibre **upper**, reinforced TPU scuff cap | 3D mesh polyester **lining** | metal-free **toe cap** | metal-free **penetration-resistant midsole** | anatomically shaped **hygienic insole** with very high moisture absorption | **weight 500 g** (LOW) and **520 g** (HIGH) in size 42



100% metal free



SIZES **36 - 48** | EN ISO 20345 : 2011
ART. NO. 67623 (LOW)
67633 (HIGH)

craft trades, second fit trades,
logistics, transport, industry, services,
local authorities, wet environments



MACSOLE®
ADVENTURE
3.0

**THE ANTIMAGNETIC MACSOLE®
ADVENTURE 3.0 RANGE IS DEDICATED
TO DEMANDING WORK ENVIRONMENTS
AND ANYONE LOOKING FOR
AN AUTHENTIC OUTDOOR DESIGN.**

Experience durability and excellent levels of grip thanks to our exclusive MACSOLE® sole, rubber scuff cap and Agile Ankle Guard support system, making it the most versatile range bar none. Equipped with new MACABSORB technology the MACSOLE® ADVENTURE 3.0 safety shoes offer 85% more shock absorption than specified by the EN ISO 20345 standard, for reliable comfort on all surfaces.

TECHNOLOGIES

MACSOLE® ADVENTURE 3.0

MACSOLE® SPORT | MACSOLE® ADVENTURE 3.0 | MACSOLE® X | RUN-R | SUXXEED OFFROAD | SUXXEED | FOCUS 2.0 | MACSOLE® PLUS 2.0 | MACSOLE® 1.0 | XXL PRO



01 Rubber scuff cap
directly integrated into the outsole offering high **abrasion resistance** | **extends product life** | suitable for those **working in a crouching or kneeling position**

02 Agile Ankle Guard
better supports the foot and heel | limits the risk of sprains

03 MACABSORB technology
energy absorption 85% higher than specified by standard | reduces fatigue in feet



MACSOLE® rubber sole with MACABSORB EVA foam inserts

SRC | resistance to **oils & hydrocarbons, chemicals** | resistance to contact heat up to **300°C** (HRO standard) | **antistatic**

French (EU) sizing system, width 11

- 01** wide ground-bearing surface
- 02** defined heel for outdoor environments
- 03** GRIPSTEP profile for extra grip on ladders & stairs
- 04** deep tread with sharp edges designed for rough terrain
- 05** self-cleaning profile increases slip resistance
- 06** ergonomic lines following natural movement of the foot

Hygienic insole

removable | anatomically shaped

microfibre top layer for better resistance to abrasion and general wear and tear | very high moisture absorption capacity & fast drying | with forefoot & heel shock absorbers



bottom layer made of **85% recycled** open cell foam with high shock absorption capacity & breathability | fast drying



Non-metallic penetration-resistant midsole

resistance to penetration up to **1,100 Newton** in accordance with the EN 20345 standard | **100% composite** | flexible | **antimagnetic** | **protects 100%** of the surface of the foot (as opposed to 85% on average for steel soles) | **lighter** than steel soles | conducts less heat and cold than a metal sole



Non-metallic protective toe cap

provides protection against falling objects up to **200 J** and compression of up to **15,000 Newton** in accordance with the EN 20345 standard | **antimagnetic** | **comfortable** due to its ergonomic shape | extra wide | **20% lighter** than a conventional steel toe cap | **conducts less** heat and cold than a metal toe cap





MACEXPEDITION 3.0 S3 HIGH S3 CI HI WR HRO SRC

MACSOLE® ADVENTURE 3.0 rubber **sole** with MACABSORB EVA insert in forefoot and heel for better shock absorption | water-resistant microfibre textile **upper**, rubber scuff cap, reinforced heel and sides Agile Ankle Guard | GORE-TEX Performance Comfort Footwear **lining** | metal-free **toe cap** | metal-free **penetration-resistant midsole** | anatomically shaped **hygienic insole** with bottom layer made of 85% of recycled open cell foam | **weight 700 g** in size 42

humid environments, green spaces, forestry, 100% waterproof (WR)

SIZES **36 - 48** | EN ISO 20345 : 2011
ART. NO. 67343



100% metal free



MACCROSSROAD BROWN 3.0 S3 HIGH S3 CI HI HRO SRC

MACSOLE® ADVENTURE 3.0 rubber **sole** with MACABSORB EVA insert in forefoot and heel for better shock absorption | water-resistant full-grain leather **upper**, rubber scuff cap, reinforced heel and sides Agile Ankle Guard | 3D mesh **lining** | metal-free **toe cap** | metal-free **penetration-resistant midsole** | anatomically shaped **hygienic insole** with bottom layer made of 85% of recycled open cell foam | **weight 700 g** in size 42

multi-purpose model for walking on uneven terrain, humid environments

SIZES **36 - 48** | EN ISO 20345 : 2011
ART. NO. 67303



100% metal free





SRC



HRO

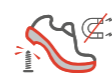


MACCROSSROAD 3.0 S3 LOW S3 CI HI HRO SRC

MACSOLE® ADVENTURE 3.0 rubber **sole** with MACABSORB EVA insert in forefoot and heel for better shock absorption | water-resistant full-grain leather **upper**, rubber scuff cap, reinforced heel and sides Agile Ankle Guard | 3D mesh **lining** | metal-free **toe cap** | metal-free **penetration-resistant midsole** | anatomically shaped **hygienic insole** with bottom layer made of 85% of recycled open cell foam | **weight 650 g** in size 42

multi-purpose model for walking on uneven terrain, humid environments

SIZES **36 - 48** | EN ISO 20345 : 2011
ART. NO. 67323



100% metal free



MACCROSSROAD 3.0 S3 HIGH S3 CI HI HRO SRC

MACSOLE® ADVENTURE 3.0 rubber **sole** with MACABSORB EVA insert in forefoot and heel for better shock absorption | water-resistant full-grain leather **upper**, rubber scuff cap, reinforced heel and sides Agile Ankle Guard | 3D mesh **lining** | metal-free **toe cap** | metal-free **penetration-resistant midsole** | anatomically shaped **hygienic insole** with bottom layer made of 85% of recycled open cell foam | **weight 700 g** in size 42

multi-purpose model for walking on uneven terrain, humid environments

SIZES **36 - 48** | EN ISO 20345 : 2011
ART. NO. 67313



100% metal free





MACCROSSROAD 3.0 S3 HIGH BOA S3 CI HI HRO SRC

MACSOLE® ADVENTURE 3.0 rubber **sole** with MACABSORB EVA insert in forefoot and heel for better shock absorption | water-resistant full-grain leather **upper**, rubber scuff cap, reinforced heel and sides Agile Ankle Guard | **BOA® Fit System** for quick, easy and customized fit | 3D mesh **lining** | metal-free **toe cap** | metal-free **penetration-resistant midsole** | anatomically shaped **hygienic insole** with bottom layer made of 85% of recycled open cell foam | **weight 700 g** in size 42

multi-purpose model for walking on uneven terrain, humid environments

SIZES **36 - 48** | EN ISO 20345 : 2011
ART. NO. 67363

BOA® is a registered trademark of Boa Technology Inc.



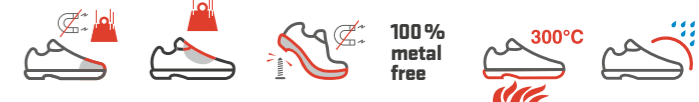
MACCROSSROAD 3.0 S3 HIGH META S3 M CI HI HRO SRC

MACSOLE® ADVENTURE 3.0 rubber **sole** with MACABSORB EVA insert in forefoot and heel for better shock absorption | water-resistant full-grain leather **upper**, rubber scuff cap, reinforced heel and sides Agile Ankle Guard | **metatarsal protection D30®** 100 Joules fully integrated into the tongue | 3D mesh **lining** | metal-free **toe cap** | metal-free **penetration-resistant midsole** | anatomically shaped **hygienic insole** with bottom layer made of 85% of recycled open cell foam | **weight 740 g** in size 42

risk of objects falling on the metatarsals, construction and civil engineering, oil & gas, heavy industry

SIZES **36 - 48** | EN ISO 20345 : 2011
ART. NO. 67353

D30® is a registered trademark of Design Blue Limited.





MACSOLE®

X

THE MACSOLE® X RANGE IS IDEAL FOR THOSE WORKING IN DEMANDING OR EVEN EXTREME CONDITIONS WITH EXPOSURE TO BAD WEATHER, RAIN, EXTREME COLD AND UNEVEN TERRAIN.

MACSOLE® products are designed to withstand the rigors of tough environments, offering several technical solutions: GORE-TEX membrane is waterproof and breathable keeping feet dry from external elements and a comfortable internal climate, GORE-TEX new generation thermal insulation technology gives maximum heat retention and MACSOLE® X rubber sole delivers excellent levels of grip. The high quality raw materials and metal-free protection elements for lower weight greater flexibility.



01
PU comfort layer
excellent shock absorption | lightness

02
Injection moulded PU scuff cap
extends product life | suitable for those working in a crouching or kneeling position

03
Water-resistant full grain leather
specific for outdoor uses



PU/MACSOLE® rubber sole

SRC | resistance to oils & hydrocarbons, chemicals | antistatic | optimal flexibility & shock absorption | resistance to contact heat up to 300°C (HRO standard)

French (EU) sizing system, width 11

- 01** rear grooves improve adhesion during first contact of heel to floor
- 02** PU comfort layer for excellent shock absorption
- 03** pronounced heel
- 04** GRIPSTEP profile for extra grip on ladders & stairs
- 05** self-cleaning profile increases slip resistance
- 06** all-terrain profile with deep cleats
- 07** excellent abrasion resistance
- 08** front grooves for better grip

Hygienic insole

removable | anatomically shaped



textile over layer: very good abrasion resistance | absorbant | fast drying

EVA perforated shock absorber and non-woven fibres: very high moisture absorption capacity | fast drying



Non-metallic penetration-resistant midsole

resistance to penetration up to 1,100 Newton in accordance with the EN 20345 standard | 100% composite | flexible | antimagnetic | protects 100% of the surface of the foot (as opposed to 85% on average for steel soles) | lighter than steel soles | conducts less heat and cold than a metal sole



Non-metallic protective toe cap

provides protection against falling objects up to 200 J and compression of up to 15,000 Newton in accordance with the EN 20345 standard | antimagnetic | comfortable due to its ergonomic shape | extra wide | 20% lighter than a conventional steel toe cap | conducts less heat and cold than a metal toe cap



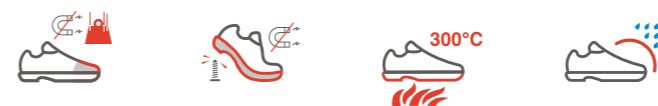


MX 100 GT2 S3 CI HI WR HRO SRC

PU/rubber **sole**, excellent levels of grip, self-cleaning sole profile, excellent shock absorption, injection moulded PU scuff cap, resistant to contact heat up to 300°C | water-resistant full-grain leather and textile **upper**, padded tongue and collar, closure system with non-metallic hooks and zip, reflective piping and insert | GORE-TEX Insulated Comfort Membrane **lining** - new: 15% lighter and with the same level of insulation due to a new GORE-TEX insulation technology | metal-free **toe cap** | metal-free **penetration-resistant midsole** | anatomically shaped **hygienic insole** with level heel shock absorber | **weight 830 g** in size 42

outdoor work in extremely cold conditions, transportation networks, mountain work, cold stores, oil & gas, mining, 100% waterproof (WR)

SIZES **37-48** | EN ISO 20345 : 2011
ART. NO. 67083





CI



SRC



MX 400 GT S3 CI HI WR HRO SRC

PU/rubber **sole**, excellent levels of grip, oil, self-cleaning sole profile, excellent shock absorption, injection moulded PU scuff cap, resistant to contact heat up to 300°C | brown water-resistant full-grain leather **upper**, padded tongue and collar, closure system with metallic hooks and eyelets, reflective piping | GORE-TEX Extended Comfort Footwear membrane **lining** | metal-free **toe cap** | metal-free **penetration-resistant midsole** | anatomically shaped **hygienic insole** with heel shock absorber | **weight 800 g** in size 42

outdoor work in humid conditions, construction, transportation networks, energy, chemical, forestry, 100% waterproof (WR)

SIZES **37 - 48** | EN ISO 20345 : 2011
ART. NO. 63953



MX 300 GT S3 CI HI WR HRO SRC

PU/rubber **sole**, excellent levels of grip, oil, self-cleaning sole profile, excellent shock absorption, injection moulded PU scuff cap, resistant to contact heat up to 300°C | water-resistant full-grain leather **upper**, padded tongue and collar, closure system with metallic hooks and eyelets, reflective piping | membrane GORE-TEX Extended Comfort Footwear **lining** | metal-free **toe cap** | metal-free **penetration-resistant midsole** | anatomically shaped **hygienic insole** with heel shock absorber | **weight 800 g** in size 42

outdoor work in humid conditions, construction, transportation networks, energy, chemical, forestry, 100% waterproof (WR)

SIZES **37 - 48** | EN ISO 20345 : 2011
ART. NO. 63933





MX 500 S3 HI HRD SRC

PU/rubber **sole**, excellent levels of grip, self-cleaning sole profile, excellent shock absorption. Injection moulded PU scuff cap, resistant to contact heat up to 300°C | water-resistant full-grain leather **upper**, padded tongue and collar, closure system with non-metallic eyelets and zip, reflective piping and insert | 3D mesh **lining** for excellent breathability, quick drying | metal-free **toe cap** | metal-free **penetration-resistant midsole** | anatomically shaped **hygienic insole** with heel shock absorber | **weight 840 g** in size 42

oil & gas, off-shore, construction, outdoor work in humid conditions, heavy industry, chemical

SIZES **37-48** | EN ISO 20345:2011
ART. NO. 63973





RUN-R

RUN-R IS THE IDEAL RANGE FOR PEOPLE LOOKING FOR A LIGHTWEIGHT, FLEXIBLE PRODUCT, DESIGNED LIKE A SPORTS SHOE.

100% metal-free, ultra flexible, excellent slip-resistant (SRC), breathable components: RUN-R safety shoes are designed for tradespeople, those working in warehousing and logistics and light industry.



01
TPU film
better abrasion resistance

02
Clima management / upper technologies
excellent breathability

03
Double density PU sole
excellent shock absorption and very low weight



Double density PU sole

SRC | resistance to oils & hydrocarbons, chemicals | antistatic | optimum flexibility & shock absorption

French (EU) sizing system, width 11



- 01** grooves at the back of the heel for a better grip when the heel first touches the ground
- 02** dual density PU for excellent shock absorption
- 03** GRIPSTEP profile for ladders and stairs
- 04** self-cleaning sole profile increases slip resistance
- 05** sharp-edged tread profile improves grip
- 06** large ground-bearing surface
- 07** deep grooves for better grip in the forefoot area

Hygienic insole

removable | anatomical | washable at 30°C

high quality microfibre top layer | excellent abrasion resistance | moisture absorption | quick drying | shock absorption in heel and forefoot areas | arch support



bottom layer made of 90% recycled open cell foam with good moisture absorption and wicking properties | quick drying



Non-metallic penetration-resistant midsole

resistance to penetration up to 1,100 Newton in accordance with the EN 20345 standard | 100% composite | flexible | antimagnetic | protects 100% of the surface of the foot (as opposed to 85% on average for steel soles) | lighter than steel soles | conducts less heat and cold than a metal sole



Non-metallic protective toe cap

provides protection against falling objects up to 200 J and compression of up to 15,000 Newton in accordance with the EN 20345 standard | antimagnetic | comfortable due to its ergonomic shape | extra wide | 20% lighter than a conventional steel toe cap | conducts less heat and cold than a metal toe cap



25%
OF RECYCLED
MATERIALS



LINING
52% recycled polyester
18% bamboo fibres

INSOLE
90% recycled PU foam

LACES
100% recycled

UPPER
100% recycled polyester
from PET bottles

PUNCTURE-RESISTANT SOLE
100% recycled fibres



protecting planet
by using bio-based material //
by using recycled material //
by using no harmful substances

RUN-R PLANET safety shoes are made from 25% recycled materials in accordance with the EN ISO 14021 standard and from bio-based material. The entire safety shoe is manufactured without using any harmful substances as listed in the banned hazardous substances list created by uvex and goes beyond of the REACH.

protecting planet
by using environmentally-
friendly packaging

The shoe boxes are made from 90% recycled cardboard. 100% recycled tissue paper is used and the instructions for use are also 100 percent recycled paper.

RUN-R PLANET S1P ESD SRC

double density PU sole, excellent levels of grip, shock absorption | 100% recycled polyester upper with TPU film for excellent abrasion resistance | 52% of recycled polyester and 18% of bamboo fibres lining for excellent breathability | metal-free toe cap | metal-free penetration-resistant midsole | anatomically shaped hygienic insole with bottom layer made of 90% of recycled open cell foam | weight 500 g in size 42

tradespeople, light industry, warehousing and logistics, manufacturing, automotive, electronics industry, dry environments

SIZES 36 - 47 | EN ISO 20345 : 2011
ART. NO. 67073





RUN-R 100 LOW S1P SRC

double density PU sole, excellent levels of grip, shock absorption | mesh upper and TPU support structure for excellent abrasion resistance | 3D polyester mesh lining for excellent breathability, quick drying | metal-free toe cap | metal-free penetration-resistant midsole | anatomically shaped hygienic insole with bottom layer made of 90% of recycled open cell foam | easy lock system: speed lace system / standard laces are supplied in the box | weight 550 g in size 42

tradespeople, light industry, warehousing and logistics, manufacturing, dry environments

SIZES 37-48 | EN ISO 20345 : 2011
ART. NO. 62583



100% metal free

RUN-R 200 + RUN-R 210 S1P SRC

double density PU sole, excellent levels of grip, shock absorption | mesh upper with TPU film for excellent abrasion resistance | 3D polyester mesh lining for excellent breathability, quick drying | metal-free toe cap | metal-free penetration-resistant midsole | anatomically shaped hygienic insole with bottom layer made of 90% of recycled open cell foam | weight 560 g in size 42

tradespeople, light industry, warehousing and logistics, manufacturing, dry environments

SIZES 37-48 | EN ISO 20345 : 2011
ART. NO. 62593 (200)
62643 (210)



100% metal free



S3



SRC



RUN-R 300 LOW + HIGH S3 SRC

double density PU **sole**, excellent levels of grip, shock absorption | water-resistant embossed oiled nubuck **upper** | 3D polyester mesh **lining** for excellent breathability, quick drying | metal-free **toe cap** | metal-free **penetration-resistant midsole** | anatomically shaped **hygienic insole** with bottom layer made of 90% of recycled open cell foam | **weight 575 g** (LOW) and **590 g** (HIGH) in size 42

tradespeople, industry, warehousing and logistics, manufacturing, local authorities, damp working conditions

SIZES **37-48** | EN ISO 20345: 2011
ART. NO. 62603 (LOW)
62663 (HIGH)



100%
metal
free



RUN-R 400 LOW + HIGH S3 SRC

double density PU **sole**, excellent levels of grip, shock absorption | water-resistant embossed full-grain leather **upper** | 3D polyester mesh **lining** for excellent breathability, quick drying | metal-free **toe cap** | metal-free **penetration-resistant midsole** | anatomically shaped **hygienic insole** with bottom layer made of 90% of recycled open cell foam | **weight 550 g** (LOW) and **570 g** (HIGH) in size 42

tradespeople, industry, warehousing and logistics, manufacturing, local authorities, damp working conditions

SIZES **37-48** | EN ISO 20345: 2011
ART. NO. 62653 (LOW)
62613 (HIGH)



100%
metal
free





SUXXEED
OFFROAD

THE SUXXEED OFFROAD RANGE HAS BEEN DEVELOPED TO WITHSTAND THE DEMANDS OF THOSE WORKING IN RUGGED OUTDOOR ENVIRONMENTS SUCH AS THE BUILDING TRADES.

The outdoor design, all-terrain sole and injection moulded polyurethane scuff cap are designed specifically for the demands of those working in more challenging workplaces.



01
Closure system
non-metallic eyelets and hooks

02
Few lateral seams
limits pressure points when bending
for increased comfort | improves liquid
penetration resistance

03
Injection moulded PU scuff cap
extends product life | suitable for those **working in**
a crouching or kneeling position



**Double density
PU sole**

SRC | resistance to **oils & hydrocarbons, chemicals** |
antistatic | optimum **flexibility & shock absorption**

French (EU) sizing system, width 11

- 01** rear grooves improve adhesion during first contact of heel to floor
- 02** double density PU sole for excellent shock absorption and very low weight
- 03** pronounced heel
- 04** GRIPSTEP profile for extra grip on ladders & stairs
- 05** sharp tread profile improves grip
- 06** all-terrain profile with deep cleats
- 07** self-cleaning profile increases slip resistance
- 08** front grooves for better grip

Hygienic insole

anatomically shaped | antistatic

textile over layer: very good
abrasion resistance | absorbant |
fast drying



bottom layer made of **100% recycled** open
cell foam with good moisture absorption
and wicking properties | quick drying



Non-metallic penetration-resistant midsole

resistance to penetration up to **1,100 Newton** in accordance with
the EN 20345 standard | **100% composite** | flexible | **antimagnetic** |
protects 100% of the surface of the foot (as opposed to 85% on average
for steel soles) | **lighter** than steel soles | conducts less heat and cold
than a metal sole



Non-metallic protective toe cap

provides protection against falling objects up to **200 J** and compression
of up to **15,000 Newton** in accordance with the EN 20345 standard |
antimagnetic | **comfortable** due to its ergonomic shape | extra wide |
20% lighter than a conventional steel toe cap | **conducts less** heat
and cold than a metal toe cap





SUXXEED OFFROAD BLACK S3 HIGH + LOW S3 CI SRC

double density PU **sole**, excellent levels of grip, self-cleaning sole profile, excellent shock absorption, injection moulded PU scuff cap | water-resistant black oiled grain leather **upper**, microfibre insert, water-resistant tongue and collar, reflective elements, non-metallic eyelets and hooks | 3D mesh **lining** for excellent breathability, quick drying | metal-free **toe cap** | metal-free **penetration-resistant midsole** | anatomically shaped **hygienic insole** with bottom layer made of 100% of recycled open cell foam | **weight 630 g (LOW) and 710 g (HIGH)** in size 42

building and construction, general industry, energy, logistics, maintenance, utilities, damp working conditions

SIZES **36 - 48** | EN ISO 20345 : 2011
ART. NO. 67283 (LOW)
67203 (HIGH)



100% metal free



SUXXEED OFFROAD S3 RANGER S3 CI SRC

double density PU **sole**, excellent levels of grip, self-cleaning sole profile, excellent shock absorption, injection moulded PU scuff cap | water-resistant black oiled grain leather **upper**, non-metallic eyelets and hooks | 3D mesh **lining** for excellent breathability, quick drying | metal-free **toe cap** | metal-free **penetration resistant midsole** | anatomically shaped **hygienic insole** with bottom layer made of 100% of recycled open cell foam | **weight 800 g** in size 42

building and construction, general industry, energy, logistics, maintenance, utilities, wet environments

SIZES **36 - 48** | EN ISO 20345 : 2011
ART. NO. 67233



100% metal free





S3



CI



SUXXEED OFFROAD S3 HIGH + LOW S3 CI SRC

double density PU sole, excellent levels of grip, self-cleaning sole profile, excellent shock absorption, injection moulded PU scuff cap | water-resistant brown oiled grain leather upper, microfibre insert, water-resistant tongue and collar, reflective elements, non-metallic eyelets and hooks | 3D mesh lining for excellent breathability, quick drying | metal-free toe cap | metal-free penetration-resistant midsole | anatomically shaped hygienic insole with bottom layer made of 100% of recycled open cell foam | weight 630 g (LOW) and 710 g (HIGH) in size 42

building and construction, general industry, energy, logistics, maintenance, utilities, damp working conditions



100% metal free

SIZES 36 - 48 | EN ISO 20345 : 2011
ART. NO. 62743 (LOW)
62733 (HIGH)



SUXXEED OFFROAD S3 RIGGER INOX + SNOW S3 CI SRC

double density PU sole, excellent levels of grip, self-cleaning sole profile, excellent shock absorption, injection moulded PU scuff cap | water-resistant brown oiled grain leather upper, microfibre insert, reflective elements, very large handles | fleece lining for thermal insulation (SNOW) | metal-free toe cap | stainless steel penetration-resistant midsole (RIGGER INOX) | metal-free penetration-resistant midsole (SNOW) | anatomically shaped hygienic insole with bottom layer made of 100% of recycled open cell foam | weight 810 g (RIGGER INOX) and 800 g (SNOW) in size 42

winter boot for building and construction, general industry, energy, logistics, maintenance, utilities, damp working conditions



RIGGER INOX



SNOW



100% metal free

SIZES 36 - 48 | EN ISO 20345 : 2011
ART. NO. 62723 (RIGGER INOX)
62753 (SNOW)



SUXXEED

THE SUXXEED RANGE IS CHARACTERISED BY SUPERB SHOCK ABSORPTION AND EXCEPTIONAL GRIP WHATEVER THE WEATHER, WHATEVER THE SURFACE.

The products in the SUXXEED range are designed for industry, trades, logistics, collective services, maintenance and industrial cleaning.



- 01**
Soft comfort
flexible collar | thick comfortable foam | Climate Airmesh lining
- 02**
Double density PU sole
excellent shock absorption and very low weight




Double density PU sole


SRC | resistance to oils & hydrocarbons, chemicals | antistatic | excellent shock absorption | very light

French (EU) sizing system, width 11

- 01** grooves at the back of the heel for a better grip when the heel first touches the ground
- 02** self-cleaning sole profile increases slip resistance
- 03** sharp tread profile improves grip
- 04** wide ground-bearing surface

 **Non-metallic penetration-resistant midsole**
resistance to penetration up to **1,100 Newton** in accordance with the EN 20345 standard | **100% composite** | flexible | **antimagnetic** | **protects 100%** of the surface of the foot (as opposed to 85% on average for steel soles) | **lighter** than steel soles | conducts less heat and cold than a metal sole



 **Non-metallic protective toe cap**
provides protection against falling objects up to **200 J** and compression of up to **15,000 Newton** in accordance with the EN 20345 standard | **antimagnetic** | **comfortable** due to its ergonomic shape | extra wide | **20% lighter** than a conventional steel toe cap | **conducts less** heat and cold than a metal toe cap



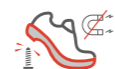


SUXXEED S1P LOW S1P SRC

double density PU sole | ultra-breathable suede upper, perforations for perfect ventilation | Climate Airmesh lining | metal-free toe cap | metal-free penetration-resistant midsole | removable hygienic insole with abrasion-resistant textile top layer | weight 585 g in size 42

tradespeople, warehousing and logistics, services, industry, hot environments, dry environments

SIZES 38 - 47 | EN ISO 20345 : 2011
ART. NO. 62563



100% metal free

SUXXEED S3 LOW + HIGH S3 SRC

double density PU sole | oiled hydro suede leather upper resistant to liquid penetration, collar and gusset in water-repellent fabric, fabric eyelets | Climate Airmesh lining | metal-free toe cap | metal-free penetration-resistant midsole | removable hygienic insole, top in abrasion-resistant fabric | weight 570 g (LOW) and 615 g (HIGH) in size 42

tradespeople, heavy industry, warehousing and logistics, services, humid environments

SIZES 35 - 47 | EN ISO 20345 : 2011
ART. NO. 62553 (LOW)
63903 (HIGH)



100% metal free





FOCUS
2.0

THE FOCUS 2.0 RANGE IS EXTREMELY VERSATILE MEETING THE DEMANDS OF A RANGE OF INDUSTRY PROFESSIONALS INCLUDING THOSE WORKING IN LIGHT INDUSTRY OR CONSTRUCTION AND OFFERS EXCELLENT VALUE FOR MONEY.

This multipurpose product boasts lightweight features such as the dual density PU sole delivering superb shock absorption and metal-free toe cap and penetration-resistant midsole.



01 Reflective elements
improves wearer's visibility

02 Double density PU sole
excellent shock absorption and very low weight

03 Padded collar
for better comfort and protection on the malleolus and Achilles tendon areas



Double density PU sole

SRC | resistance to oils & hydrocarbons, chemicals | antistatic | optimum flexibility & shock absorption

French (EU) sizing system, width 11

- 01** double density PU sole for excellent shock absorption and very low weight
- 02** rear grooves improve adhesion during first contact to heel to floor
- 03** wide ground-bearing surface
- 04** sharp tread profile improves grip
- 05** pronounced heel
- 06** self-cleaning profile increases slip resistance
- 07** front grooves for better grip

Hygienic insole

anatomically shaped | antistatic



textile top layer and perforations for easy wicking of moisture

EVA bottom layer and perforations with EVA heel shock absorber



Non-metallic penetration-resistant midsole

resistance to penetration up to **1,100 Newton** in accordance with the EN 20345 standard | **100% composite** | flexible | **antimagnetic** | **protects 100%** of the surface of the foot (as opposed to 85% on average for steel soles) | **lighter** than steel soles | conducts less heat and cold than a metal sole



Non-metallic protective toe cap

provides protection against falling objects up to **200 J** and compression of up to **15,000 Newton** in accordance with the EN 20345 standard | **antimagnetic** | **comfortable** due to its ergonomic shape | extra wide | **20% lighter** than a conventional steel toe cap | **conducts less** heat and cold than a metal toe cap





S1P



S3



FOCUS 2.0 SANDAL + PERFO S1P SRC

double density PU sole, excellent levels of grip, shock absorption | ultra-breathable oiled nubuck leather upper, large perforations for perfect ventilation, Velcro fastening (SANDAL) | ultra-breathable oiled nubuck perforated leather upper, reflective elements, non-metallic eyelets and hooks (PERFO) | 3D polyester mesh lining for excellent breathability, quick drying | metal-free toe cap | metal-free penetration-resistant midsole | anatomically shaped hygienic insole, textile top layer and perforations, EVA heel shock absorber | weight 565 g (SANDAL) and 575 g (PERFO) in size 42

hot and dry environments, industry, logistics, warehousing, general maintenance, tradespeople

SIZES 36 - 47 | EN ISO 20345 : 2011
ART. NO. 67733 (SANDAL)
67723 (PERFO)



100% metal free

FOCUS 2.0 S3 LOW + HIGH S3 SRC

double density PU sole, excellent levels of grip, shock absorption | water-resistant and padded tongue with gussets to keep dirt and debris out | water-resistant oiled nubuck leather and textile upper, reflective elements, non-metallic eyelets and hooks, padded collar | 3D polyester mesh lining for excellent breathability, quick drying | metal-free toe cap | metal-free penetration-resistant midsole | anatomically shaped hygienic insole, textile top layer and perforations, EVA heel shock absorber | weight 570 g (LOW) and 615 g (HIGH) in size 42

building and construction, general industry, energy, logistics, maintenance, damp working conditions

SIZES 36 - 47 | EN ISO 20345 : 2011
ART. NO. 67713 (LOW)
67703 (HIGH)



100% metal free





MACSOLE®
PLUS 2.0

THE MACSOLE® PLUS 2.0 RANGE WITH MACSOLE® RUBBER SOLE TECHNOLOGY IS EXTREMELY DURABLE MAKING IT SUITABLE FOR A MULTITUDE OF ENVIRONMENTS.

The abrasion-resistant all-terrain sole profile with outstanding grip, even in damp working conditions, is resistant to contact heat up to 300°C (HRD). The new MACSOLE® PLUS 2.0 range appeals to wearers for its technical performance, comfort features and value for money.



01
EVA insert

in forefoot and heel for excellent shock absorption

02
Rubber scuff cap

high abrasion resistance | extends product life | suitable for those working in a crouching or kneeling position

03
Padded collar

for better comfort and protection of the malleolus and Achilles tendon areas



MACSOLE®
rubber sole

SRC | resistance to oils & hydrocarbons, chemicals | resistance to contact heat up to 300°C (HRO standard) | antistatic

French (EU) sizing system, width 11

- 01** wide ground-bearing surface
- 02** pronounced heel
- 03** GRIPSTEP profile for extra grip on ladders & stairs
- 04** self-cleaning profile increases slip resistance
- 05** sharp tread profile improves grip
- 06** excellent abrasion resistance
- 07** front grooves for better grip

Hygienic insole

anatomically shaped | antistatic

textile over layer: very good abrasion resistance | absorbant | fast drying



bottom layer made of 100% recycled open cell foam with good moisture absorption and wicking properties | quick drying



Non-metallic penetration-resistant midsole

resistance to penetration up to 1,100 Newton in accordance with the EN 20345 standard | 100% composite | flexible | antimagnetic | protects 100% of the surface of the foot (as opposed to 85% on average for steel soles) | lighter than steel soles | conducts less heat and cold than a metal sole



Non-metallic protective toe cap

provides protection against falling objects up to 200 J and compression of up to 15,000 Newton in accordance with the EN 20345 standard | antimagnetic | comfortable due to its ergonomic shape | extra wide | 20% lighter than a conventional steel toe cap | conducts less heat and cold than a metal toe cap

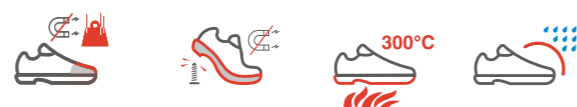




MACSTOPAC 300 S3 HIGH + LOW S3 HRO SRC

MACSOLE® PLUS 2.0 rubber **sole**, EVA insert in forefoot and heel for excellent shock absorption, excellent levels of grip, resistant to contact heat up to 300°C, rubber scuff cap | water-resistant grain leather **upper**, fewer seams, padded collar | Distance-Mesh **lining** for excellent breathability, quick drying | metal-free **toe cap** | metal-free **penetration-resistant midsole** | anatomically shaped **hygienic insole** with bottom layer made of 100% of recycled open cell foam | **weight 640 g (LOW) and 690 g (HIGH)** in size 42

versatile model for construction, general industry, heavy industry, hot ground, damp working conditions



SIZES **37 - 48** | EN ISO 20345: 2011
ART. NO. 67533 (LOW)
67153 (HIGH)



MACSTOPAC 100 BROWN + BLACK S3 HIGH S3 HRO SRC

MACSOLE® PLUS 2.0 rubber **sole**, EVA insert in forefoot and heel for excellent shock absorption, excellent levels of grip, resistant to contact heat up to 300°C, rubber scuff cap | water-resistant grain leather **upper**, fewer seams, padded collar | Distance-Mesh **lining** for excellent breathability, quick drying | metal-free **toe cap** | stainless steel **penetration-resistant midsole** | anatomically shaped **hygienic insole** with bottom layer made of 100% of recycled open cell foam | **weight 750 g** en pointure 42

versatile model for construction, general industry, heavy industry, hot ground, damp working conditions



SIZES **37 - 48** | EN ISO 20345: 2011
ART. NO. 67113 (BROWN)
67103 (BLACK)





MACSOLE®
1.0

DESIGNED FOR THE CONSTRUCTION INDUSTRY OR ON HOT GROUND, STEELMAKING, THIS RANGE IS EXCEPTIONALLY COMFORTABLE AND CAPABLE OF WITHSTANDING THE HARSHTEST CONDITIONS.

The MACSOLE®1.0 sole technology provides excellent weather resistance as well as meeting users' expectations on sturdiness.



MACSOLE® 1.0 NTX SBP WRU HI HRO SRA

MACSOLE® 1.0 smooth rubber **sole** | pigmented leather **upper**, reflectors, derby cut fits any foot, fewer seams, leather gusset | mesh **lining**, high abrasion resistance, efficient moisture wicking, quick drying | metal-free **toe cap** | stainless steel **penetration-resistant midsole** | MACSOLE® 1.0 ETC **hygienic insole** | **weight 780 g** in size 42

for asphalting

SIZES **38 - 48** | EN ISO 20345 : 2011
ART. NO. 62993



MACSOLE® 1.0 WLD LOW S3 CI HI-1 HRO WG SRC

MACSOLE® 1.0 rubber **sole** | pigmented leather **upper**, seams sewn with flame-resistant Kevlar®, pigmented leather anti-projection flap with a double Velcro fastening, fewer seams, waterproof grain leather gusset | black high abrasion-resistant, non-woven fabric **lining** | metal-free **toe cap** | stainless steel **penetration-resistant midsole** | MACSOLE® 1.0 XCB **hygienic insole** | **weight 810 g** in size 42

for welding, steelworks and workplaces where there is a risk of molten metal splash

SIZES **38 - 48** | EN ISO 20349-2 : 2017
ART. NO. 62963





XXL PRO

THE XXL PRO RANGE IS THE IDEAL SOLUTION FOR PEOPLE WORKING IN HEAVY CONSTRUCTION OR QUARRIES.

Its wraparound soles made of dual density PU combined with leathers that are very resistant to abrasion and liquids, provide 360° protection.



ALPHA PRO S3 CI SRC

double density PU sole | full-grain pigmented liquid-resistant leather upper, waterproof leather gusset | 3D-Distance-Mesh lining | steel toe cap | stainless steel penetration-resistant midsole | HYDROFLEX hygienic insole | weight 750 g in size 42

building and public services, construction and civil engineering, quarries

SIZES 38 - 48 | EN ISO 20345 : 2011
ART. NO. 63913



RUN-R INSOLE

approved for RUN-R and SUXXEED OFFROAD ranges | anatomically shaped | antistatic system | washable at 30°C | shock absorption in heel and forefoot areas | arch support | high quality microfibre top layer, excellent abrasion resistance, moisture absorption, quick drying | bottom layer of open cell foam: good moisture absorption and wicking properties, quick drying

SIZES 37 - 48
ART. NO. 62997



SUXXEED INSOLE

approved for the SUXXEED range | anatomically shaped | antistatic system | washable at 40°C | shock absorption | textile surface structure | bottom layer of EVA foam

SIZES 35 - 47
ART. NO. 62996



MACSOLE® 1.0 XCB (STANDARD CONDITIONS) + ETC (THERMAL INSULATION)

XCB approved for the MACSOLE® 1.0 range | PU removable sole, anatomically shaped, antistatic, microfibre upper, perforated | packaging: sold by size and individually wrapped | weight 65 g in size 42

SIZES 36 - 48
ART. NO. 62996



ETC approved for MACSOLE® 1.0 NTX model | aluminised removable sole, anatomically shaped, antistatic | memory foam | activated carbon anti-odour treatment | weight 50 g in size 42

SIZES 38 - 48
ART. NO. 96661



SOCKS

colour black | composition 77% cotton 21% polyamide 2% elastane | available in 2 sizes 37/41 or 42/46 | individual packaging | suitable for retail

ART. NO. 1051118 (P37/41)
1051119 (P42/46)



SAMPLE BAG

colour black | with a dual compartment | dimensions 75x41x28 cm

ART. NO. 1051121

MERCHANDISING



SHELF DISPLAY

material expanded 5 mm PVC | dimension 300 x 120 x 250 mm | fixing 4 adhesive transparent pads

ART. NO. 1051086



COUNTER DISPLAY

structure plexi | height 322 mm | presentation of 1 shoe

ART. NO. 1051055



STOOL

colour black | dimensions 38 x 38 x 38 cm | weight 2 kg | outside material polyester fabric 220 g

ART. NO. 1051106



PLASTIC DISPLAY MATERIAL

structure steel structure | plastic display material | height 185 cm | presentation on 2 sides | total 10 shoes | manually build with building tools included in delivery

ART. NO. 1051122

OVERVIEW

ART. NO.	DESIGNATION	SIZES	TYPE	EN ISO 20345	Building and Public Works - Construction shell	Craft - Second fit trades	Energy and Environment	Logistics - Transport - Services - Trade	Industry	Heavy industry	Agriculture - Green spaces	Page
67403	MS 100 LOW	36→48	Shoe	S1P HRO SRC								23
67453	MS 100 HIGH	36→48	Lace-up boot	S1P HRO SRC								22
67473	MS 300 LOW	36→48	Shoe	S3 HRO SRC								25
67433	MS 300 HIGH	36→48	Lace-up boot	S3 HRO SRC								25
67443	MS 110 SANDAL	36→48	Sandal	S1P HRO SRC								24
67603	MS 10 LOW	36→48	Shoe	S1P HRO SRC								26
67623	MS 30 LOW	36→48	Shoe	S3 HRO SRC								27
67633	MS 30 HIGH	36→48	Lace-up boot	S3 HRO SRC								27
67343	MACEXPEDITION 3.0 S3 HIGH	36→48	Lace-up boot	S3 CI HI WR HRO SRC								32
67303	MACCROSSROAD BROWN 3.0 S3 HIGH	36→48	Lace-up boot	S3 CI HI HRO SRC								33
67313	MACCROSSROAD 3.0 S3 HIGH	36→48	Lace-up boot	S3 CI HI HRO SRC								35
67323	MACCROSSROAD 3.0 S3 LOW	36→48	Shoe	S3 CI HI HRO SRC								34
67353	MACCROSSROAD 3.0 S3 HIGH META	36→48	Lace-up boot	S3 M CI HI HRO SRC								37
67363	MACCROSSROAD 3.0 S3 HIGH BOA	36→48	Lace-up boot	S3 CI HI HRO SRC								36
67083	MX 100 GT2	37→48	Zip-up winter boot	S3 CI HI WR HRO SRC								42-43
63933	MX 300 GT	37→48	Lace-up boot	S3 CI HI WR HRO SRC								45
63953	MX 400 GT	37→48	Lace-up boot	S3 CI HI WR HRO SRC								44
63973	MX 500	37→48	Zip-up boot	S3 HI HRO SRC								46-47
67073	RUN-R PLANET	36→47	Shoe	S1P ESD SRC								52-53
62583	RUN-R 100 LOW	37→48	Shoe	S1P SRC								54
62593	RUN-R 200	37→48	Shoe	S1P SRC								55
62643	RUN-R 210	37→48	Shoe	S1P SRC								55
62663	RUN-R 300 HIGH	37→48	Lace-up boot	S3 SRC								56
62603	RUN-R 300 LOW	37→48	Shoe	S3 SRC								56
62613	RUN-R 400 HIGH	37→48	Lace-up boot	S3 SRC								57
62653	RUN-R 400 LOW	37→48	Shoe	S3 SRC								57
67203	SUXXEED OFFROAD BLACK S3 HIGH	36→48	Lace-up boot	S3 CI SRC								62
67283	SUXXEED OFFROAD BLACK S3 LOW	36→48	Shoe	S3 CI SRC								62
62733	SUXXEED OFFROAD S3 HIGH	36→48	Lace-up boot	S3 CI SRC								64
62743	SUXXEED OFFROAD S3 LOW	36→48	Shoe	S3 CI SRC								64
67233	SUXXEED OFFROAD S3 RANGER	36→48	Ranger	S3 CI SRC								63
67273	SUXXEED OFFROAD S3 RIGGER INOX	36→48	Boot	S3 CI SRC								65
62753	SUXXEED OFFROAD S3 SNOW	36→48	Winter boot	S3 CI SRC								65
63903	SUXXEED S3 HIGH	35→47	Lace-up boot	S3 SRC								71
62553	SUXXEED S3 LOW	35→47	Shoe	S3 SRC								71
62563	SUXXEED S1P LOW	38→47	Shoe	S1P SRC								70
67703	FOCUS 2.0 S3 HIGH	36→47	Lace-up boot	S3 SRC								77
67713	FOCUS 2.0 S3 LOW	36→47	Shoe	S3 SRC								77
67723	FOCUS 2.0 PERFO	36→47	Shoe	S1P SRC								76
67733	FOCUS 2.0 SANDAL	36→47	Sandal	S1P SRC								76
67153	MACSTOPAC 300 S3 HIGH	37→48	Lace-up boot	S3 HRO SRC								82
67533	MACSTOPAC 300 S3 LOW	37→48	Shoe	S3 HRO SRC								82
67103	MACSTOPAC 100 BLACK S3 HIGH	37→48	Lace-up boot	S3 HRO SRC								83
67113	MACSTOPAC 100 BROWN S3 HIGH	37→48	Lace-up boot	S3 HRO SRC								83
62963	MACSOLE® 1.0 WLD LOW	38→48	Lace-up welder boot	S3 CI HI-1 HRO WG SRC (EN 20349-2:2017)								87
62993	MACSOLE® 1.0 NTX	38→48	Lace-up boot	SBP WRU HI HRO SRA (EN 20345:2011)								86
63913	ALPHA PRO	38→48	Lace-up boot	S3 CI SRC								90

UVEX HECKEL s.a.s

44 rue d'Engwiller | La Walck | 67350 Val de Moder | France

Tel. +33 388 07 61 08 | **Fax** +33 388 72 51 06

E-Mail France contact.france@uvex-heckel.fr

E-Mail Export contact.export@uvex-heckel.fr

www.heckel.fr

